



**Count on it.**

**Parts Catalog**

**21in Heavy-Duty Rear Bagger**

**Lawn Mower**

**Model No. 22189—Serial No. 290000001 and Up**



# Ordering Replacement Parts

To order replacement parts, please supply the part number, the quantity, and the description of each part desired.

## Understanding Reference Numbers

Each identified part in an illustration has a reference number. The reference number for a part also appears in the parts list, along with other information about the part.

This catalog uses two special reference number formats, one to indicate parts in a service assembly and another to indicate the quantity of a given part in an illustration.

## Service Assembly Reference Numbers

Parts in service assemblies have reference numbers in the form a:b. The a represents the reference number of the entire service assembly and the b represents a sequential number unique to each part within the service assembly.

For example, a wheel assembly might be identified by reference number 6, the tire by 6:1, the valve by 6:2, and the wheel by 6:3. When you order the assembly identified by reference number 6, you receive all parts identified by reference numbers 6:1, 6:2, and 6:3. However, you may also order any part individually. Reference numbers of this type appear in illustration and in parts lists.

## Reference Numbers Indicating Quantity

In an illustration, if a reference number indicates more than one part, the reference number has the form nX y. The n represents the quantity of the part, the X is the multiplication symbol, and the y represents the reference number.

For example, in an illustration, the reference number 2X 37 means that two of the parts identified by reference number 37 are indicated.

# List of Abbreviations

**AR:** as required

**ASM:** assembly

**BBC:** blade brake control

**BHTF:** button head thread forming

**CARR:** carriage

**CCW:** counter clockwise

**CW:** clockwise

**DEG:** degrees

**DPA:** Dual Point Adjustment

**ECM:** electronic control module

**EXT:** external

**FH:** flat head

**GA:** gauge

**HD:** heavy-duty

**HF:** hex flange

**HH:** hex head

**HHF:** hex head flange

**HHFTF:** hex head flange thread forming

**HJ:** hex jam

**HLH:** hex lag head

**HOC:** height-of-cut

**HSBH:** hex socket button head

**HSFH:** hex socket flat head

**HSH:** hex socket head

**HWH:** hex washer head

**HWHTF:** hex washer head thread forming

**HYD:** hydraulic

**LH:** left hand

**LPG:** Liquid Propane Gas

**NI:** nylon insert

**NPTF:** national pipe thread fine

**PFH:** phillips flat head

**PPH:** phillips pan head

**PPHTF:** phillips pan head thread forming

**PRH:** phillips round head

**PTH:** phillips truss head

**PTO:** power-take-off

**RH:** right hand

**ROPS:** roll-over protection system

**RRB:** rear roller brush

**SFH:** slotted fillister head

**SHH:** slotted hex head

**SHWH:** slotted hex washer head

**SPH:** slotted pan head

**SQH:** square head

**SRH:** slotted round head

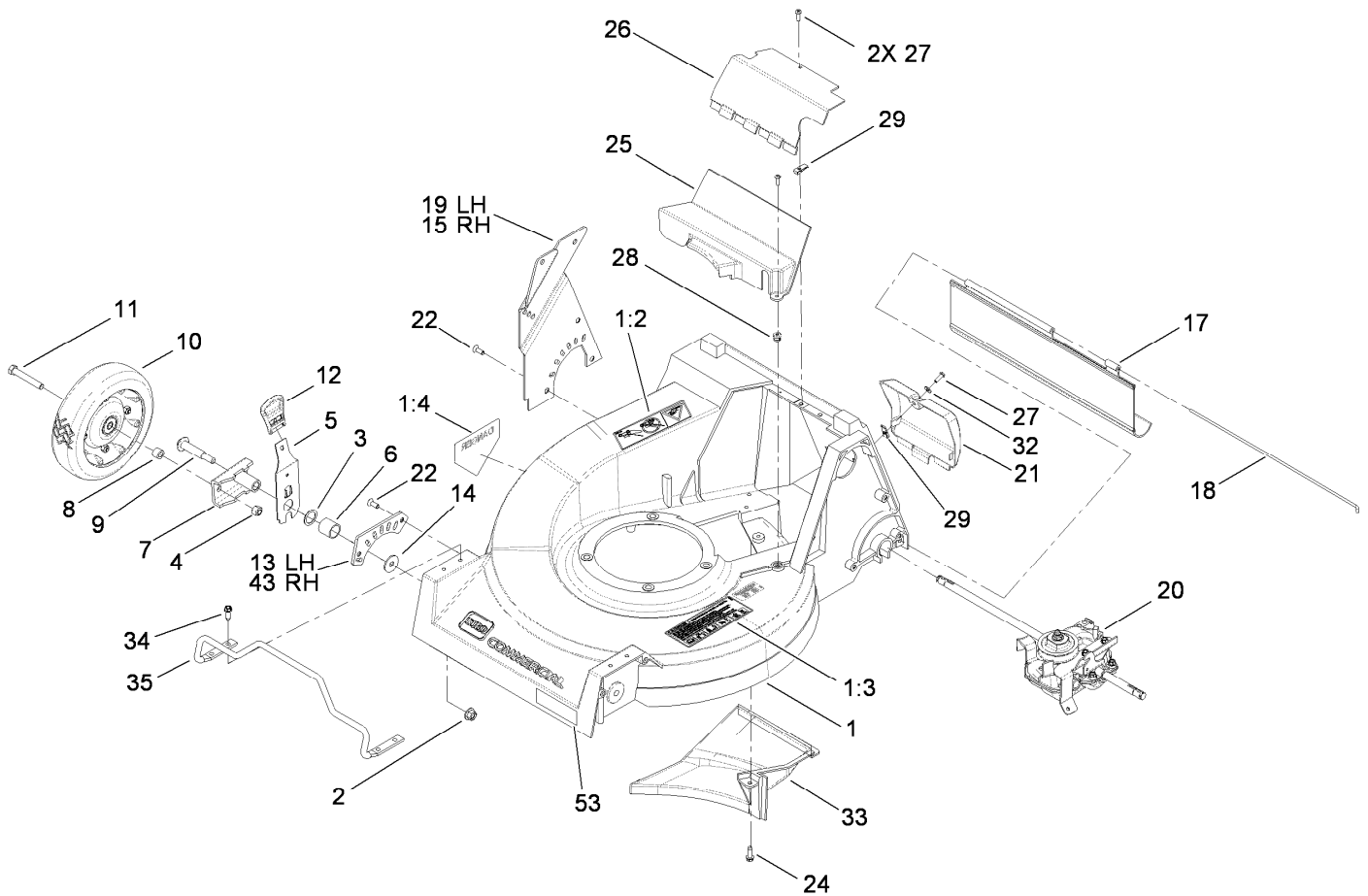
**STD:** standard

**TAP:** self tapping

**TTH:** torx truss head

# Contents

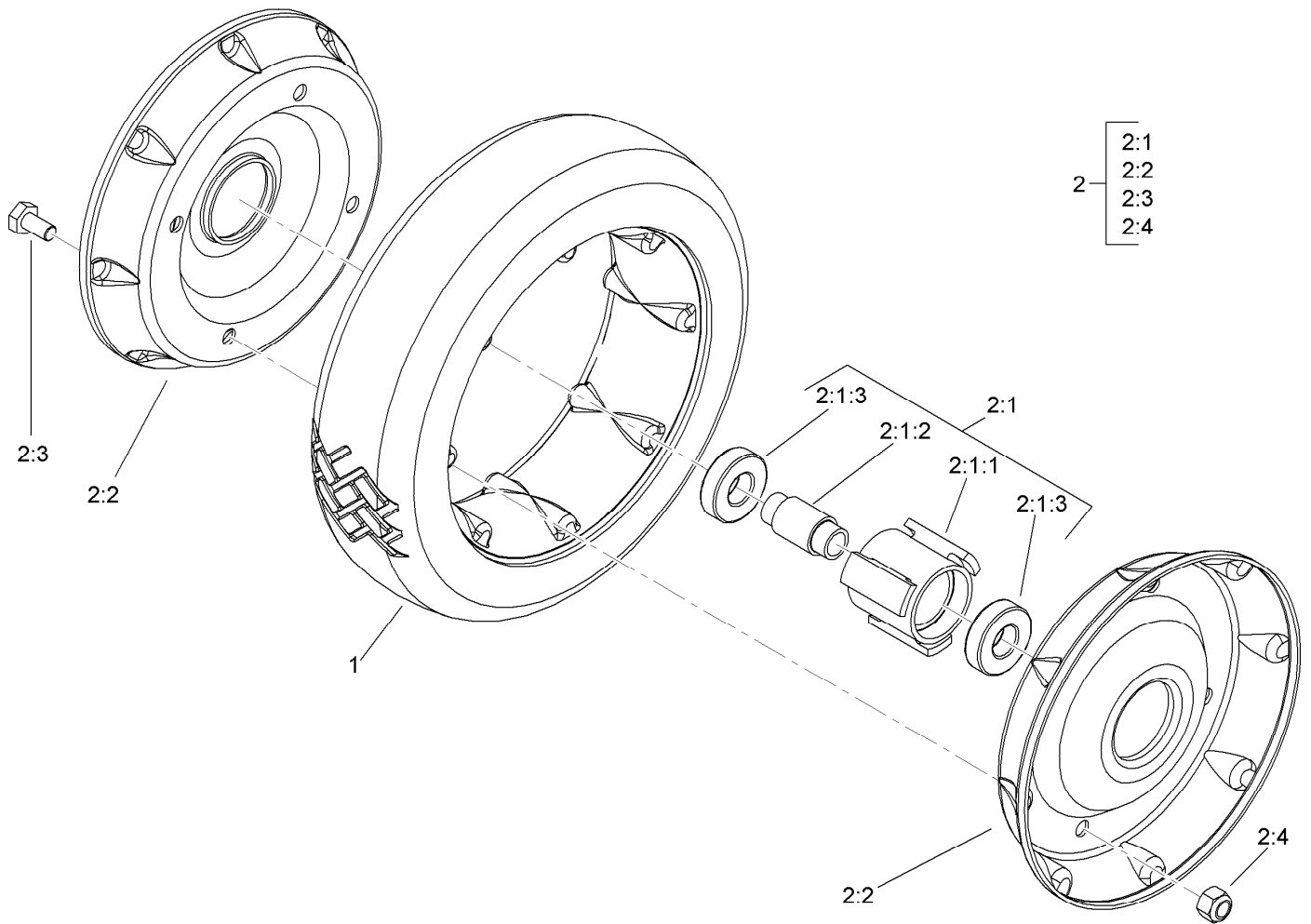
Housing Assembly .....	4
Front Wheel and Tire Assembly No. 100-2870 .....	5
Gear Case Assembly No. 110-2100 .....	6
Blade Brake Clutch Assembly .....	7
Engine and Fuel Tank Assembly .....	8
Handle Assembly .....	9
Rear Suspension Assembly .....	10
Rear Wheel Assembly No. 100-2860 .....	11
Rear Door and Bag Assembly .....	12
Cylinder and Crankcase Assembly Kawasaki FJ180V-AS30 .....	13
Piston and Crankshaft Assembly Kawasaki FJ180V-AS30 .....	14
Valve and Camshaft Assembly Kawasaki FJ180V-AS30 .....	15
Lubrication Equipment Assembly Kawasaki FJ180V-AS30 .....	16
Cooling Equipment Assembly Kawasaki FJ180V-AS30 .....	17
Electric Equipment Assembly Kawasaki FJ180V-AS30 .....	18
Control Equipment Assembly Kawasaki FJ180V-AS30 .....	19
Carburetor Assembly Kawasaki FJ180V-AS30 .....	20
Air Filter and Muffler Assembly Kawasaki FJ180V-AS30 .....	21
Starter Assembly Kawasaki FJ180V-AS30 .....	22
Label Assembly Kawasaki FJ180V-AS30 .....	23



## Housing Assembly

Ref.	Part Number	Qty.	Description	Ref.	Part Number	Qty.	Description
1	115-0991	1	Deck ASM	17	110-0509	1	Shield-Trailing
1:2	110-4977	1	Decal-Danger	18	33-3202	1	Rod-Shield
1:3	110-4989	1	Decal-Warning	19	115-4497-01	1	Plate-Rear HOC, LH ●
1:4	43-8480	1	Decal-Danger	20	110-2100	1	Gear Case ASM
2	54-9190	2	Nut-Lock	21	107-4288	1	Door-Access, Rear
3	115-0972	2	Washer	22	32144-17	10	Screw-HH
4	32152-2	2	Nut-Lock, Cone	24	32144-85	4	Screw-HWH
5	115-0980	2	Front Spring Arm ASM	25	107-4297	1	Cover-Belt, Lower
6	75-5310	2	Spacer-Bearing	26	107-4298	1	Cover-Belt, Upper
7	61-8300	2	Arm-Pivot, Front	27	32144-32	3	Screw
8	52-2480	2	Spacer-Wheel	28	611380	1	Nut-Clip
9	114-3468	2	Screw-Shoulder	29	3290-171	2	Nut-Type J
10	100-2870	2	Wheel And Tire ASM	32	3256-14	1	Washer-Flat
11	323-12	2	Screw-HH	33	115-0973	1	Baffle-Chute, Floor
12	110-0549	2	Knob-HOC	34	49-2040	4	Screw-HWHTF
13	115-4495	1	Plate-Front HOC, LH ●	35	110-4876	1	Guard-Engine
14	115-0956	2	Washer	43	115-4496	1	Plate-Front HOC, RH
15	115-4498-01	1	Plate-Rear HOC, RH	53	68-7410	1	Decal-Blade

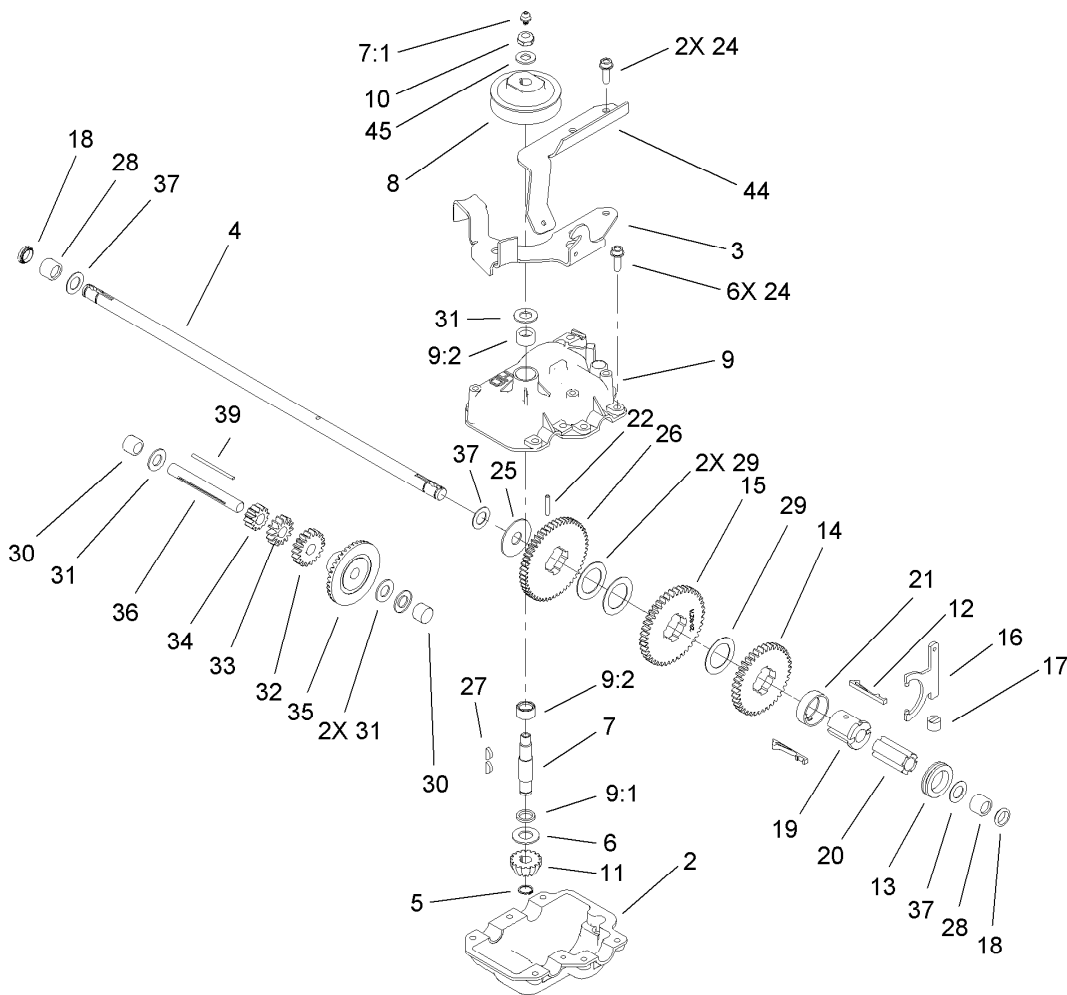
● Not illustrated



## Front Wheel and Tire Assembly No. 100-2870

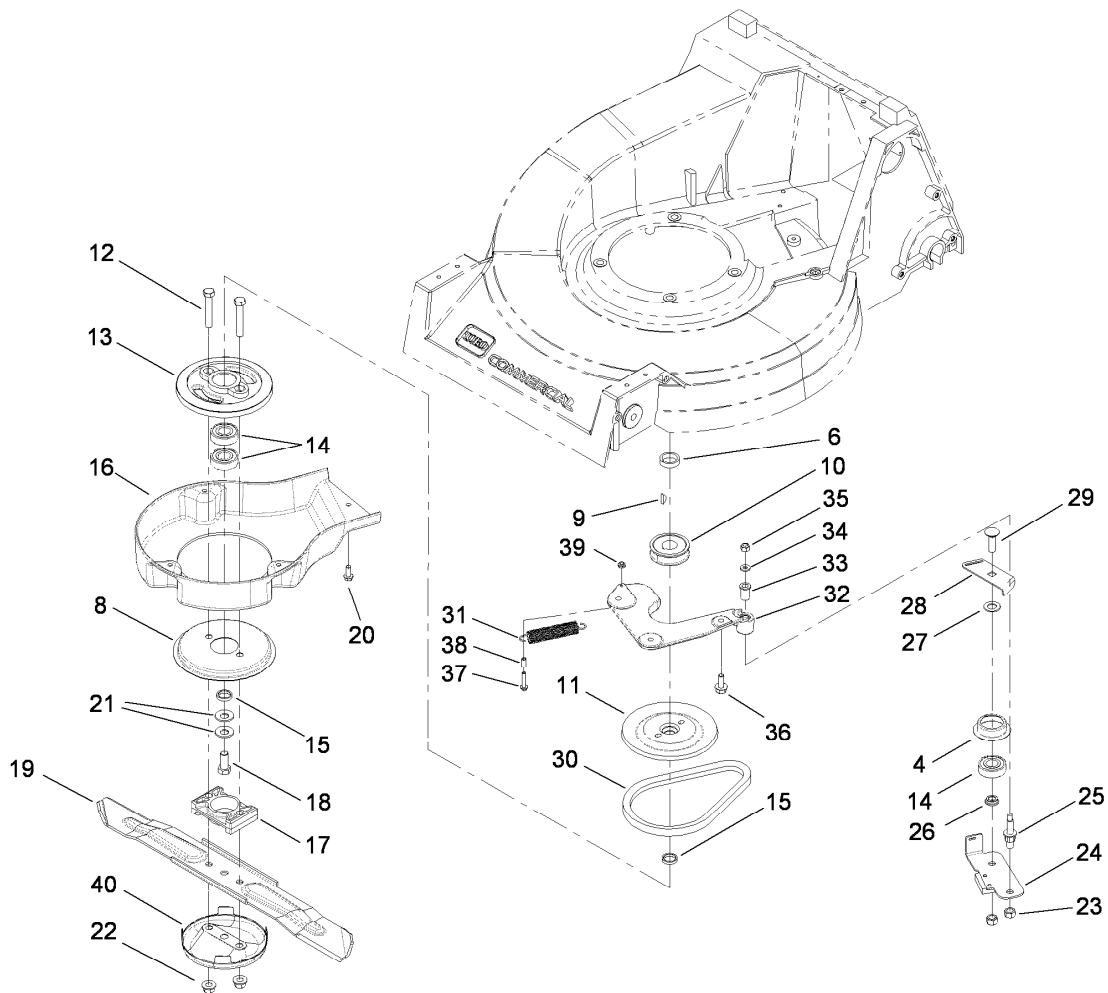
Ref.	Part Number	Qty.	Description
1	53-7740	1	Tire
2		1	Wheel ASM ●
2:1		1	Hub And Bearing ASM ●
2:1:1	52-2410	1	Hub-Bearing
2:1:2	52-2440	1	Spacer-Bearing
2:1:3	52-2450	2	Bearing-Wheel
2:2	53-7780-06	2	Plate-Wheel, Half
2:3	321-2	4	Screw-HH
2:4	3296-42	4	Nut-Lock, NI

● Not serviced separately



## Gear Case Assembly No. 110-2100

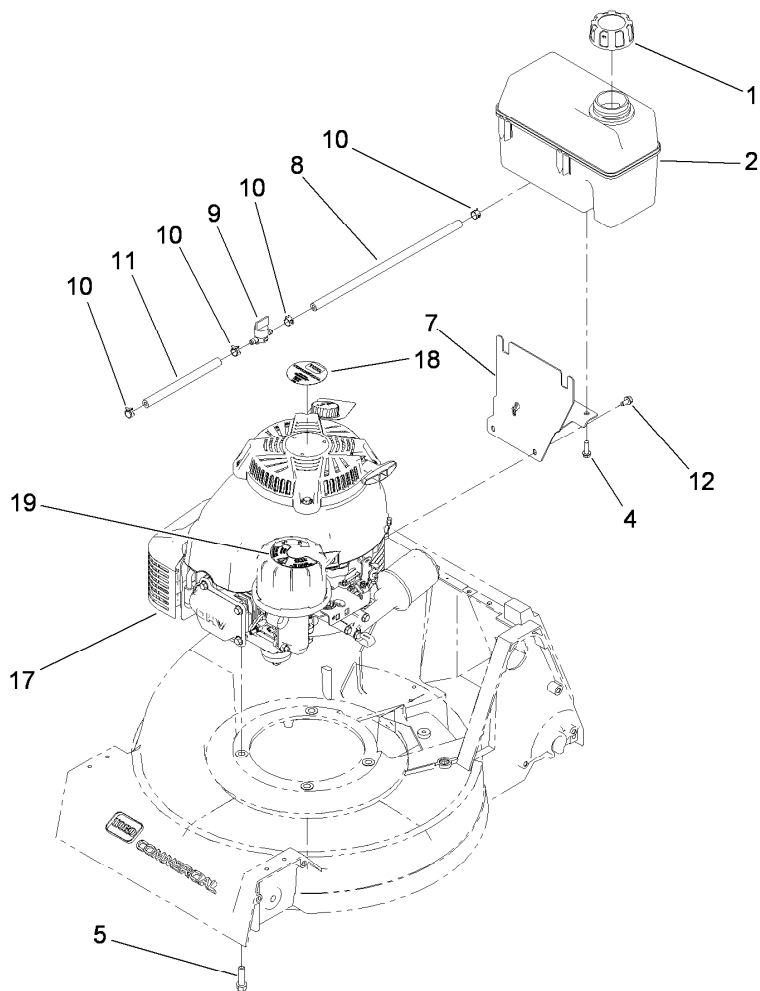
Ref.	Part Number	Qty.	Description	Ref.	Part Number	Qty.	Description
2	74-1920	1	Case-Gear, Lower	20	39-6720	1	Sleeve
3	49-8461-03	1	Bracket-Guide, Belt	21	55-8020	1	Retainer-Key
4	74-1890	1	Shaft-Output	22	3285-19	1	Pin-Groove
5	32151-57	1	Ring-Retaining	24	49-2040	8	Screw-HWHTF
6	47-2910	1	Washer-Thrust	25	29-9690	1	Washer
7	13-5149	1	Input Shaft ASM	26	46-3560	1	Gear
7:1	302-63	1	Zerk	27	3257-1	2	Key-Woodruff
8	39-6740	1	Pulley	28	48-2060	2	Bearing-Roller
9	13-9739	1	Upper Gearcase ASM	29	36-4770	3	Washer
9:1	47-7260	1	Seal	30	252-103	2	Bearing-Needle, Closed
9:2	47-7270	2	Bearing-Needle	31	36-4792	4	Washer-Thrust
10	3296-5	1	Nut-Lock	32	39-6650	1	Gear-18T
11	39-6660	1	Pinion-Bevel	33	46-3550	1	Gear-14T
12	29-9330	2	Key-Shift	34	46-3540	1	Gear-12T
13	29-9340	1	Collar-Shift	35	74-1760	1	Gear-Bevel
14	42-4740	1	Gear-38T	36	53-7950	1	Shaft-Intermediate
15	29-9271	1	Gear-42T	37	36-4780	3	Washer-Plain
16	60-8870	1	Yoke-Shift	39	39-7842	1	Key
17	29-9570	1	Bushing-Yoke	44	108-2648-03	1	Arm-Actuating, Gear Case
18	47-6730	2	Seal-Oil	45	3256-45	1	Washer-Flat
19	55-8010	1	Sleeve-Gear				



## Blade Brake Clutch Assembly

Ref.	Part Number	Qty.	Description
4	108-3790	1	Retainer-Belt
6	110-2142	1	Spacer-Pulley
8	108-3787	1	Disc
9	3257-17	1	Key-Woodruff
10	56-6180	1	Pulley-Driver
11	107-4277-03	1	Pulley-Driver, Upper
12	104-5936	2	Screw-HH
13	107-0754	1	Drum
14	100-1048	3	Bearing-Ball
15	107-4293	2	Spacer-Plate, BBC
16	110-0508	1	Shield-BBC
17	107-4275	1	Spacer-Blade
18	3212-4	1	Screw-HH
19	91-2256-03	1	Blade-21 Inch
20	32144-85	4	Screw-HWH
21	1-603610	2	Washer-Spring
22	54-9190	2	Nut-Lock
23	603773	2	Nut

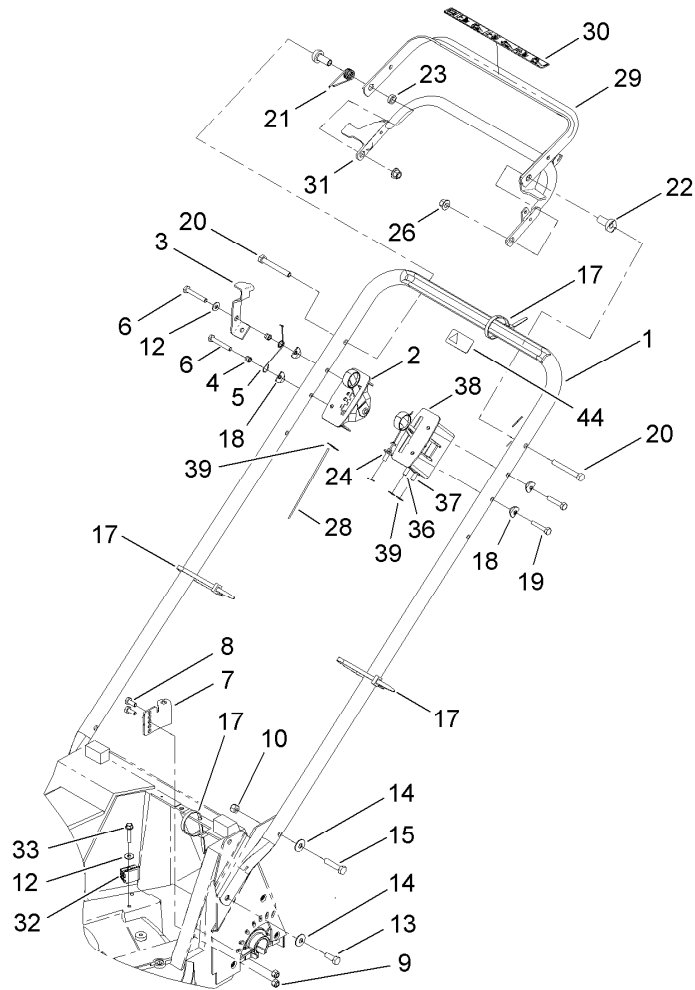
Ref.	Part Number	Qty.	Description
24	107-7477	1	Brake Arm ASM
25	107-0759	1	Bolt-Shoulder
26	107-0758	1	Spacer-Bearing
27	605256	1	Washer-Plain
28	107-7471	1	Plate-Guide
29	3231-25	1	Screw-CARR
30	110-1790	1	Belt-BBC
31	115-4471	1	Spring-Extension
32	107-4280	1	Plate-Mounting, BBC
33	107-0797	1	Bushing
34	3256-16	1	Washer-Flat
35	3296-42	1	Nut-Lock, NI
36	33104-020	3	Screw-HHF
37	32144-9	1	Screw-TAP
38	107-4292	1	Spacer-BBC
39	3296-27	1	Nut-Lock, NI
40	80-2770	1	Cup-Scalp, Anti



## Engine and Fuel Tank Assembly

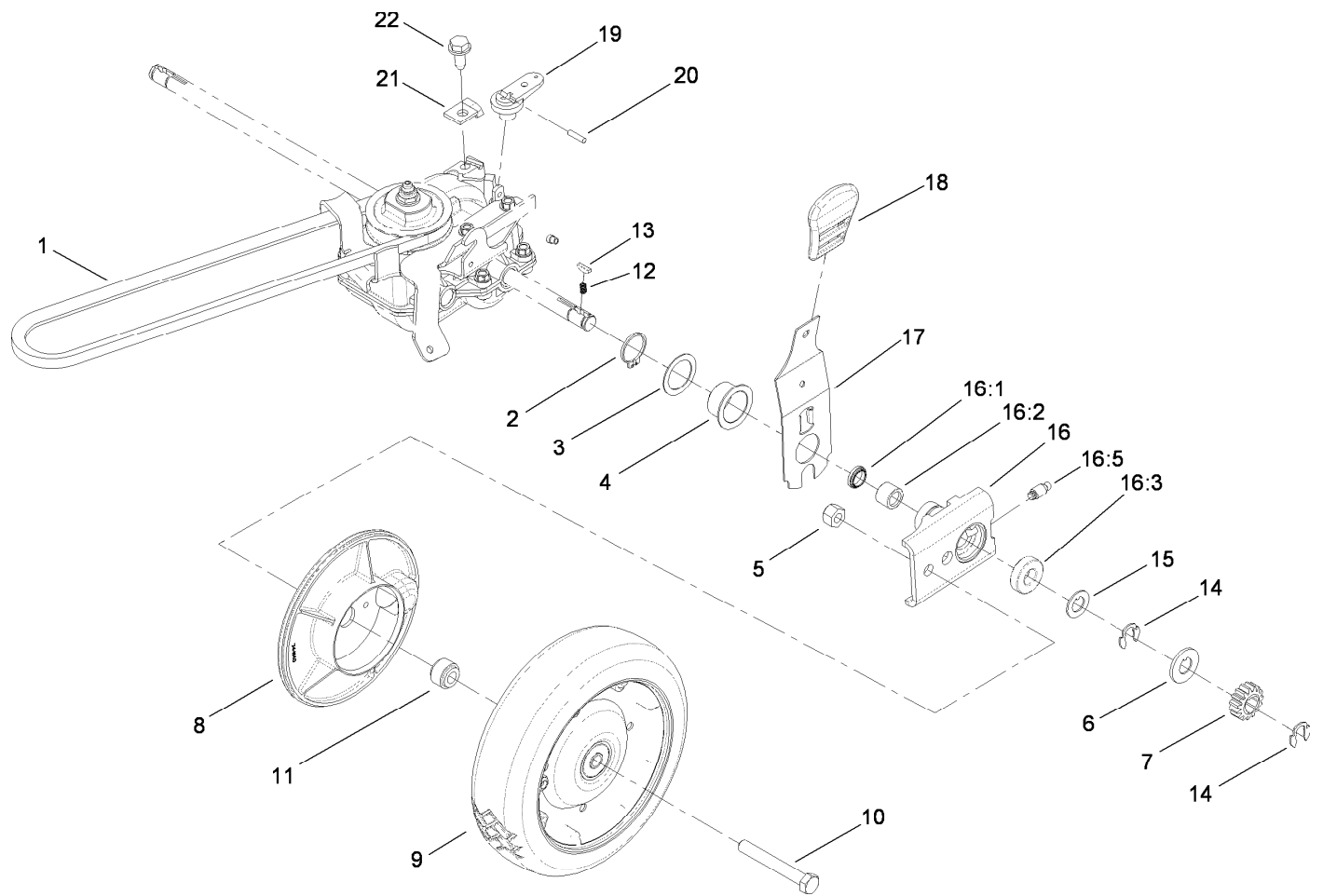
<i>Ref.</i>	<i>Part Number</i>	<i>Qty.</i>	<i>Description</i>
1	93-7198	1	Gas Cap ASM
2	106-0625	1	Tank-Fuel
4	46-8091	2	Screw-HWH
5	95-1727	4	Screw-Taptite
7	115-0954-03	1	Tank Mount ASM
8	114-3766	1	Hose-Fuel
9	1-603770	1	Valve-Fuel
10	2412-98	4	Clamp-Hose
11	107-0588	1	Hose-Fuel
12	104-2628	3	Screw-HWH
17	110-5048	1	Engine-Kawasaki, Fj180V-As30
18	112-9967	1	Decal
19	114-3415	1	Decal-Air Cleaner





## Handle Assembly

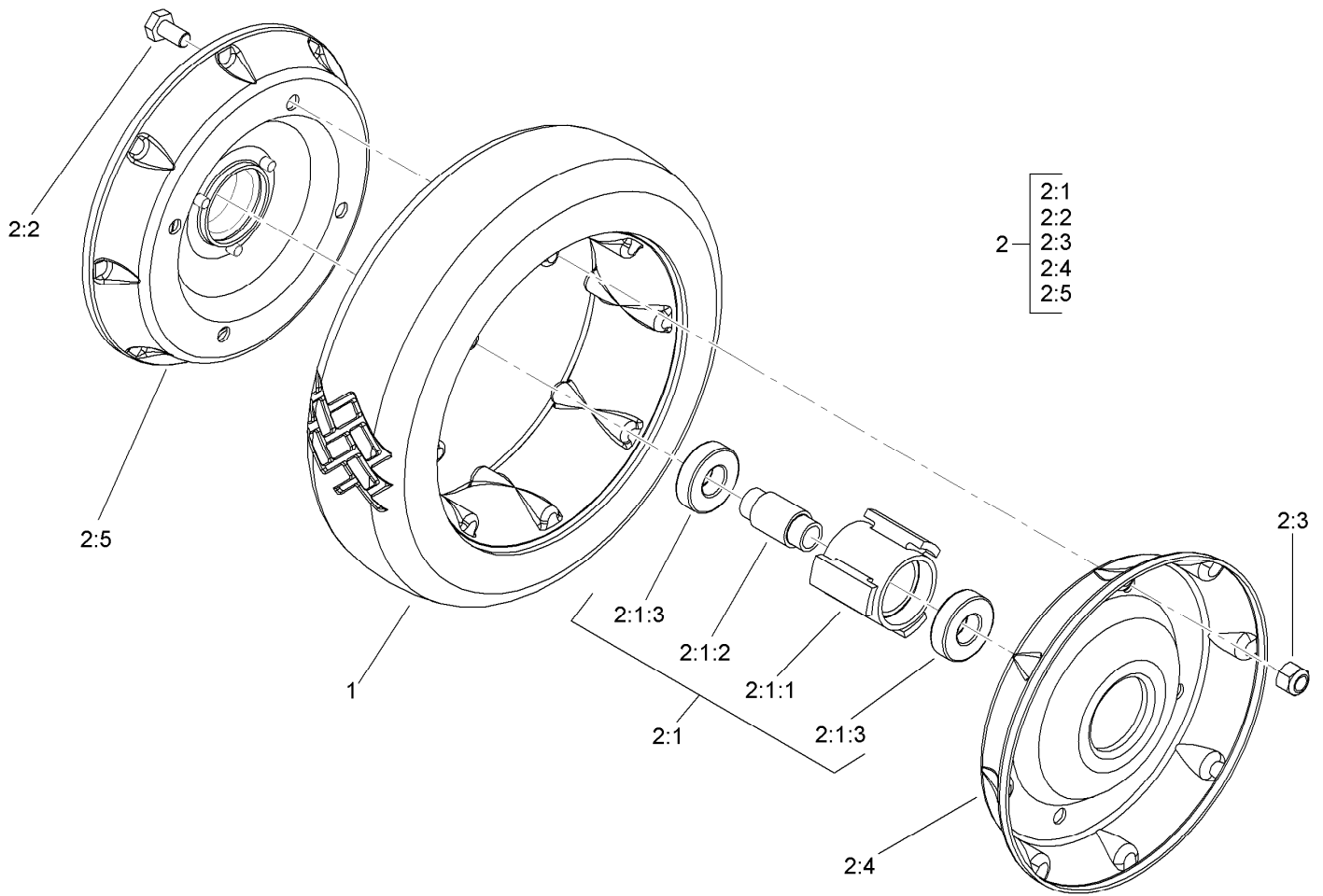
<i>Ref.</i>	<i>Part Number</i>	<i>Qty.</i>	<i>Description</i>	<i>Ref.</i>	<i>Part Number</i>	<i>Qty.</i>	<i>Description</i>
1	107-4162-03	1	Handle	20	322-12	2	Screw-HH
2	116-0504	1	Control-Shift	21	115-0993	1	Spring-Torsion
3	115-0999-01	1	Latch-Lever, BBC	22	49-1631	2	Spacer-Support
4	110-0542	2	Spacer-Flange	23	59-4310	1	Spacer
5	115-0996	1	Spring-Torsion, Latch	24	107-4296	1	Cable-BBC
6	321-10	2	Screw-HH	26	3296-58	2	Nut-Lock, NI
7	115-4453	1	Anchor-Cable	28	107-4295	1	Cable-Shift
8	321-3	2	Screw-HH	29	115-4454-03	1	Traction Bail ASM
9	3296-42	2	Nut-Lock, NI	30	110-2114	1	Decal-Control
10	3296-29	4	Nut-Lock, NI	31	115-4452-03	1	BBC Bail ASM
12	3256-1	2	Washer-Flat	32	92-7729	1	Anchor-Cable, Upper
13	322-4	2	Screw-HH	33	32144-110	1	Screw-HWH
14	3290-456	4	Washer-Belleville	36	107-4294	1	Cable-Traction
15	322-7	2	Screw-HH	37	110-4923	1	Throttle Cable ASM
17	3290-378	5	Tie-Cable	38	117-3544	1	Control Head
18	115-0995	4	Washer	39	32151-86	4	E-Ring
19	321-13	2	Screw-HH	44	98-4387	1	Decal-Protection, Ear



## Rear Suspension Assembly

Ref.	Part Number	Qty.	Description
1	612652	1	V-Belt
2	32151-36	2	Ring-Retaining
3	74-1810	2	Washer
4	115-0966	2	Bushing-Flange
5	32152-2	2	Nut-Lock, Cone
6	62-3830	2	Washer-Thrust, Outer
7	39-9160	2	Gear-Pinion
8	74-1640	2	Cover-Wheel
9	100-2860	2	Wheel And Tire ASM
10	323-13	2	Screw-HH
11	74-1650	2	Spacer-Cover, Wheel
12	39-9650	2	Spring-Compression
13	612066	2	Key

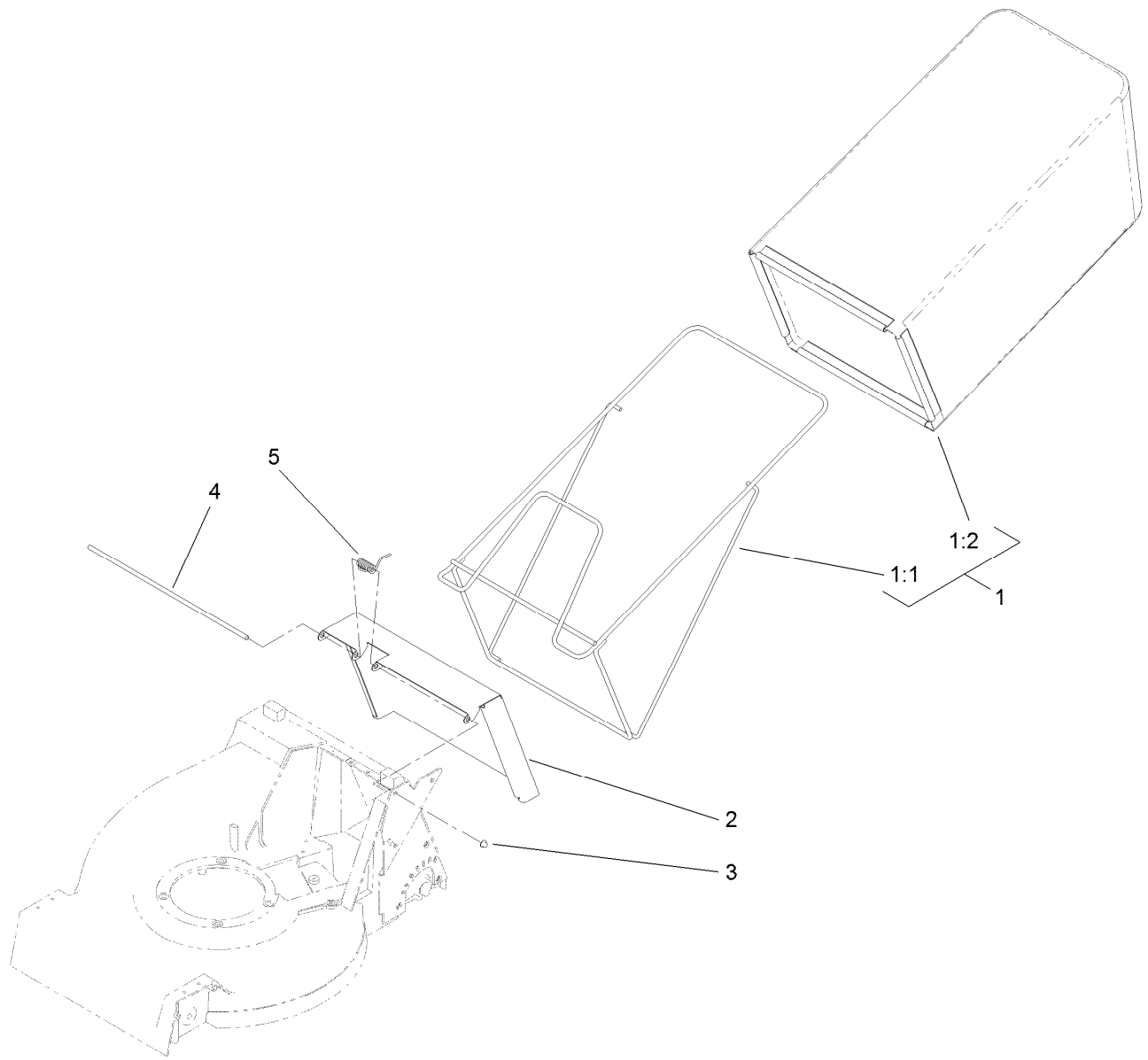
Ref.	Part Number	Qty.	Description
14	32151-68	4	Ring-Retaining
15	49-7700	2	Washer-Thrust, Outer
16	74-1851	2	Pivot Arm ASM
16:1	47-6730	1	Seal-Oil
16:2	48-2060	1	Bearing-Roller
16:3	52-2450	1	Bearing-Wheel
16:5	92-6316	1	Zerk
17	115-0979	2	Rear Spring Arm ASM
18	110-0549	2	Knob-HOC
19	29-9560	1	Lever-Shift
20	32121-99	1	Pin-Coil
21	62-3720	1	Clamp-Cable
22	32144-70	1	Screw-HWHTF



## Rear Wheel Assembly No. 100-2860

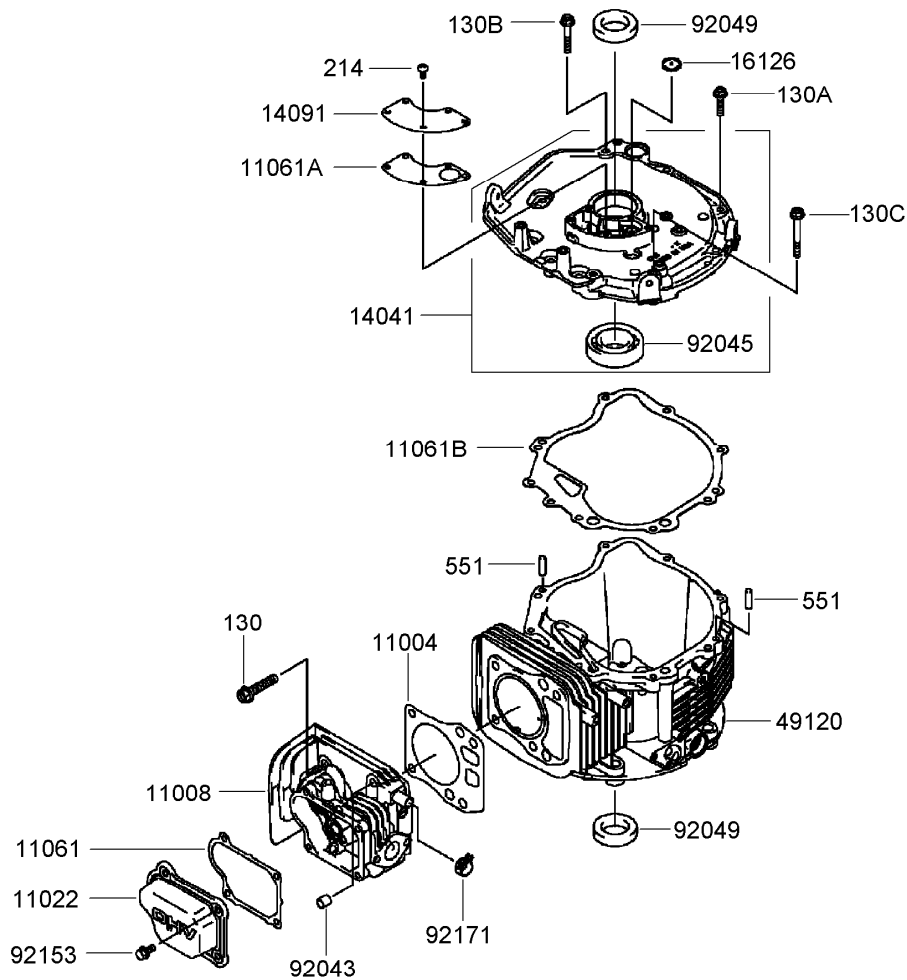
Ref.	Part Number	Qty.	Description
1	53-7740	1	Tire
2		1	Wheel ASM ●
2:1		1	Hub And Bearing ASM ●
2:1:1	52-2410	1	Hub-Bearing
2:1:2	52-2440	1	Spacer-Bearing
2:1:3	52-2450	2	Bearing-Wheel
2:2	321-2	4	Screw-HH
2:3	3296-42	4	Nut-Lock, NI
2:4	53-7780-06	1	Plate-Wheel, Half
2:5	92-4957-06	1	Wheel Half And Gear ASM

● Not serviced separately



## Rear Door and Bag Assembly

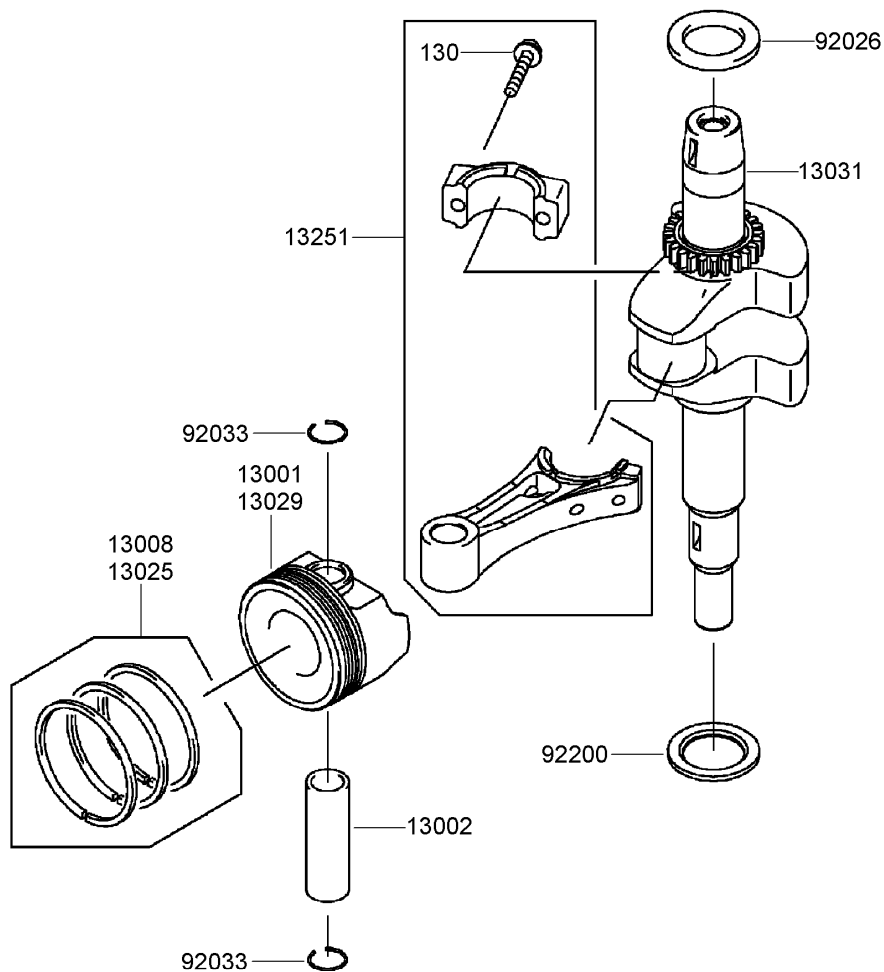
<i>Ref.</i>	<i>Part Number</i>	<i>Qty.</i>	<i>Description</i>
1	110-2140	1	Grass Bag ASM
1:1	110-0510-03	1	Frame ASM
1:2	110-0530	1	Bag-Grass
2	114-3445-03	1	Door-Discharge, Rear
3	32112-1	2	Pushnut-Cap, Washer
4	107-4286	1	Rod-Door
5	110-5005	1	Spring-Torsion, Door



## Cylinder and Crankcase Assembly Kawasaki FJ180V-AS30

<i>Ref.</i>	<i>Part Number</i>	<i>Qty.</i>	<i>Description</i>
11004	11004-7020	1	Gasket-Head ●
11008	11008-7025	1	Head-Cylinder ●
11022	11022-7005	1	Case-Rocker ●
11061	11061-7023	1	Gasket-Case, Rocker ●
11061A	11061-7031	1	Gasket-Breather ●
11061B	11061-7060	1	Gasket-Cover, Crankcase ●
14041	14041-7010	1	Cover ●
14091	14091-7010	1	Cover-Breather ●
16126	16126-7014	1	Valve-Breather ●
49120	49120-7082	1	Crankcase ●
92043	92043-7001	2	Pin ●
92045	92045-1207	1	Bearing-Ball (62/28) ●
92049	92049-7008	2	Seal-Oil (28-44-9 T C) ●
92153	92153-7043	4	Bolt (6X12) ●
92171	92171-7024	1	Clamp ●
130	130CA0840	4	Bolt-Flanged (8X40) ●
130A	130G0625	7	Bolt-Flanged (6X25) ●
130B	130G0635	1	Bolt-Flanged (6X35) ●
130C	130G0650	1	Bolt-Flanged,6X50 ●
214	214B0510	5	Screw-Pan (5X10) ●
551	551A0612	2	Pin-Dowel (6X12) ●

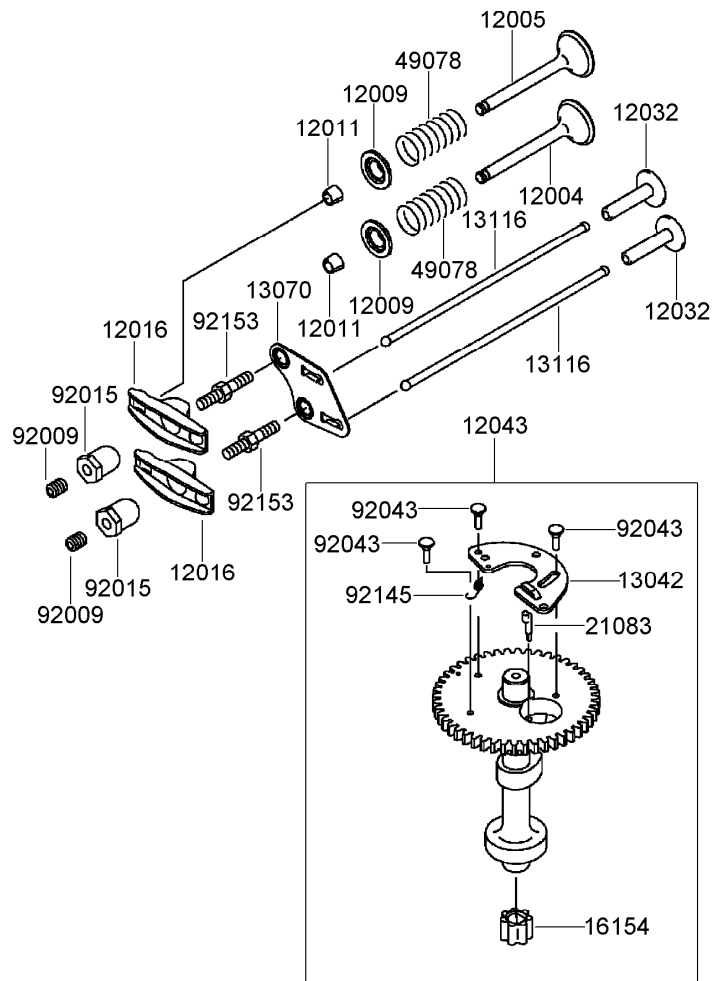
● Obtain parts from [www.kawpowerepc.com](http://www.kawpowerepc.com)



## Piston and Crankshaft Assembly Kawasaki FJ180V-AS30

<i>Ref.</i>	<i>Part Number</i>	<i>Qty.</i>	<i>Description</i>
13001	13001-7022	1	Piston-Engine ●
13002	13002-7001	1	Pin-Piston ●
13008	13008-7002	1	Piston Ring Set ●
13025	13025-7006	1	Piston Ring Set (L 0.50) ●
13029	13029-7005	1	Piston-Engine (L 0.50) ●
13031	13031-7077	1	Crankshaft ●
13251	13251-7011	1	Connecting Rod ASM ●
92026	92026-7020	1	Spacer ●
92033	92033-7002	2	Ring-Snap ●
92200	92200-7042	1	Washer (28X41.5X2.5) ●
130	130G0630	2	Bolt-Flanged (6X30) ●

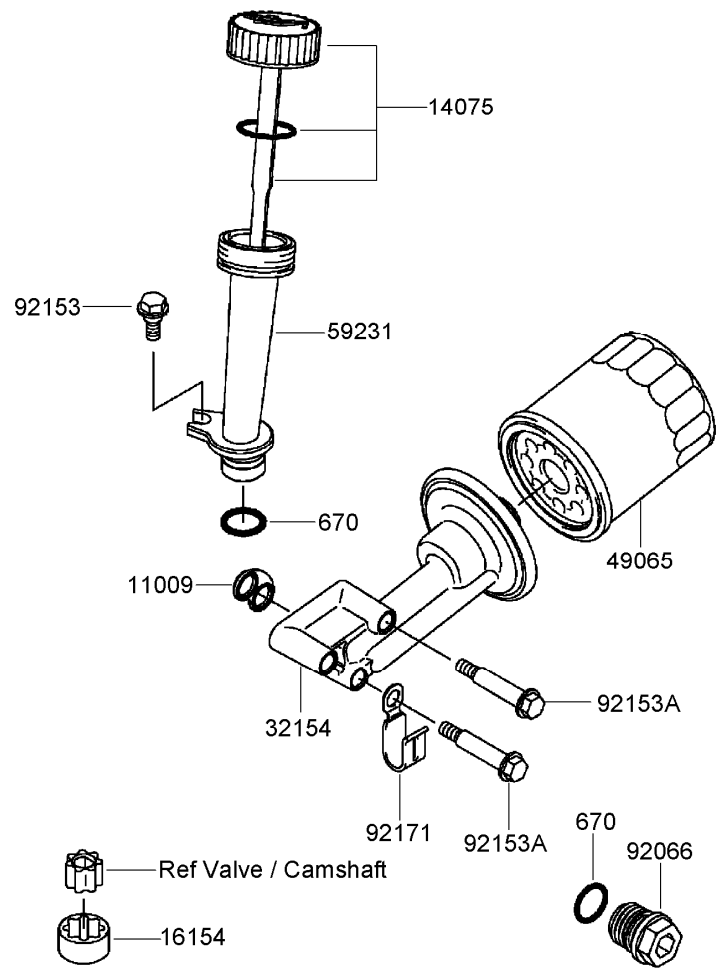
● Obtain parts from [www.kawpowerepc.com](http://www.kawpowerepc.com)



## Valve and Camshaft Assembly Kawasaki FJ180V-AS30

<i>Ref.</i>	<i>Part Number</i>	<i>Qty.</i>	<i>Description</i>
12004	12004-7005	1	Valve-Intake ●
12005	12005-7006	1	Valve-Exhaust ●
12009	12009-7001	2	Retainer-Spring, Valve ●
12011	12011-2056	4	Collet ●
12016	12016-7008	2	Arm-Rocker ●
12032	12032-7001	2	Tappet ●
12043	12043-7005	1	Camshaft Valve ASM ●
13042	13042-7006	1	Weight ●
13070	13070-7009	1	Guide ●
13116	13116-7003	2	Rod-Push ●
16154	16154-7004	1	Rotor-Pump ●
21083	21083-7009	1	Arm ●
49078	49078-7001	2	Spring-Valve, Engine ●
92009	92009-2341	2	Screw ●
92015	92015-2253	2	Nut ●
92043	92043-7006	3	Pin ●
92145	92145-7016	1	Spring ●
92153	92153-7019	2	Bolt ●

● Obtain parts from [www.kawpowerepc.com](http://www.kawpowerepc.com)

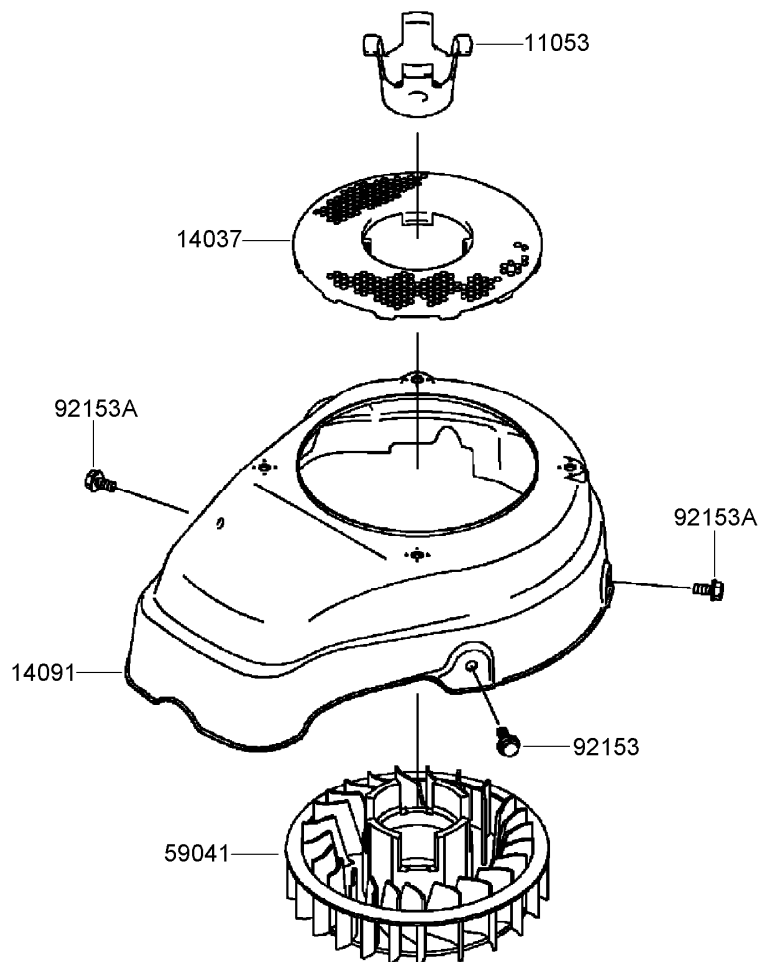


## Lubrication Equipment Assembly Kawasaki FJ180V-AS30

<i>Ref.</i>	<i>Part Number</i>	<i>Qty.</i>	<i>Description</i>
11009	11009-2860	1	Gasket ●
14075	14075-7007	1	Cap ASM ●
16154	16154-7002	1	Rotor-Pump ●
32154	32154-7018	1	Pipe ●
49065	49065-2078	1	Filter-Oil ●
59231	59231-7004	1	Filler ●
92066	92066-7003	1	Plug ●
92153	92153-7007	1	Bolt ●
92153A	92153-7028	3	Bolt ●
92171	92171-7008	1	Clamp ●
670	670D2016	2	O-Ring (16Mm) ●

● Obtain parts from [www.kawpowerepc.com](http://www.kawpowerepc.com)

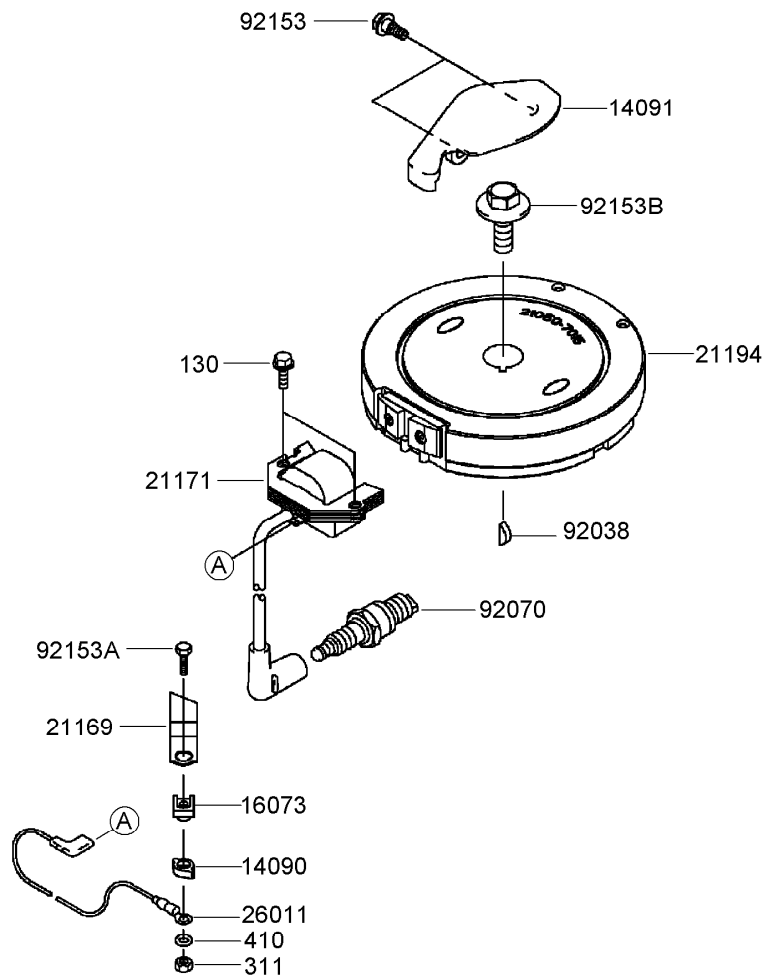




## Cooling Equipment Assembly Kawasaki FJ180V-AS30

<i>Ref.</i>	<i>Part Number</i>	<i>Qty.</i>	<i>Description</i>
11053	11053-7009	1	Bracket-Fan ●
14037	14037-7017	1	Screen ●
14091	14091-7053	1	Cover ●
59041	59041-7009	1	Fan ●
92153	92153-7007	1	Bolt ●
92153A	92153-7043	2	Bolt (6X12) ●

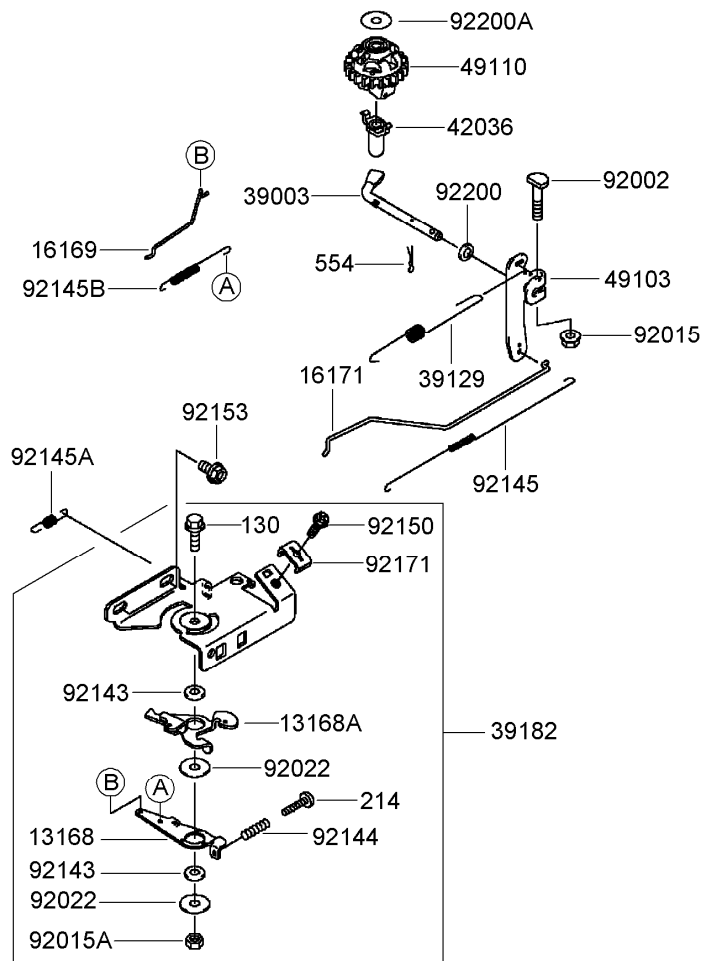
● Obtain parts from [www.kawpowerepc.com](http://www.kawpowerepc.com)



## Electric Equipment Assembly Kawasaki FJ180V-AS30

Ref.	Part Number	Qty.	Description
14090	14090-2108	1	Cover ●
14091	14091-7036	1	Cover ●
16073	16073-2192	1	Insulator ●
21169	21169-2071	1	Terminal ●
21171	21171-7030	1	Ignition Coil ASM ●
21194	21194-7024	1	Flywheel ●
26011	26011-7013	1	Wire-Lead ●
92038	92038-2077	1	Key ●
92070	92070-2088	1	Spark Plug, B P R 5E S (N G K) Solid ●
92153	92153-7007	2	Bolt ●
92153A	92153-7012	1	Bolt (4X16) ●
92153B	92153-7030	1	Bolt (12X30) ●
130	130B0620	2	Bolt-Flanged (6X20) ●
311	311B0400	1	Nut-Hex (4Mm) ●
410	410B0400	1	Washer-Plain, S (4Mm) ●

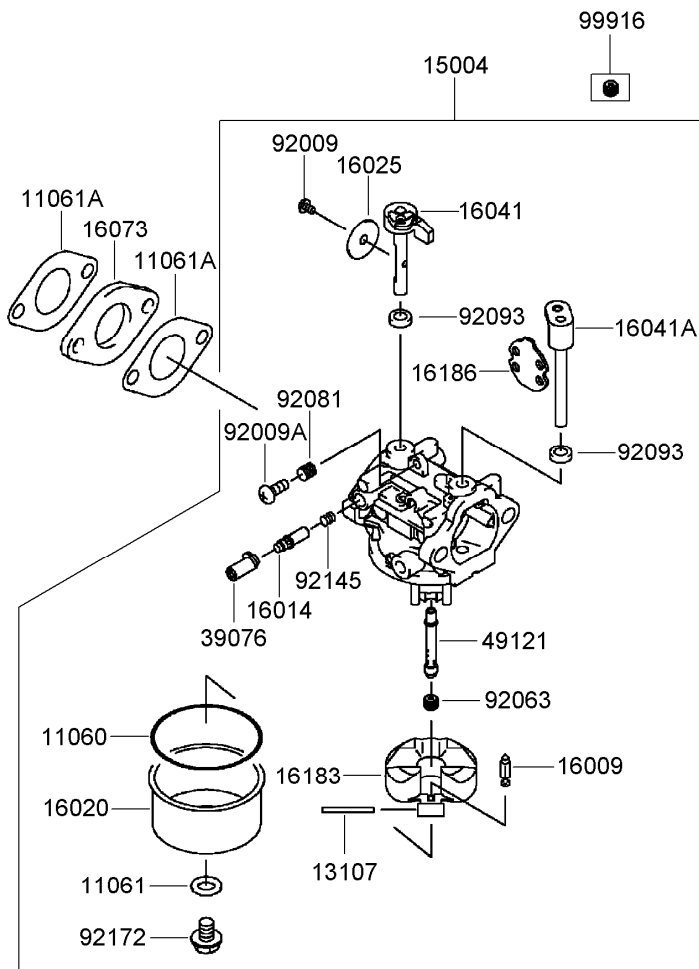
● Obtain parts from [www.kawpowerepc.com](http://www.kawpowerepc.com)



## Control Equipment Assembly Kawasaki FJ180V-AS30

<i>Ref.</i>	<i>Part Number</i>	<i>Qty.</i>	<i>Description</i>	<i>Ref.</i>	<i>Part Number</i>	<i>Qty.</i>	<i>Description</i>
13168	13168-7028	1	Lever ●	92143	92143-2135	2	Collar (6X13X2.3) ●
13168A	13168-7032	1	Lever ●	92144	92144-2266	1	Spring ●
16169	16169-7015	1	Link-Choke ●	92145	92145-7025	1	Spring-Throttle ●
16171	16171-7015	1	Link-Throttle ●	92145A	92145-7032	1	Spring ●
39003	39003-7002	1	Arm-Pivot ●	92145B	92145-7043	1	Spring ●
39129	39129-7014	1	Spring-Governor ●	92150	92150-2182	1	Bolt (5X18) ●
39182	39182-7007	1	Panel-Assy-Control ●	92153	92153-7043	2	Bolt (6X12) ●
42036	42036-2051	1	Sleeve ●	92171	92171-7016	1	Clamp ●
49103	49103-7005	1	Arm-Governor ●	92200	92200-2029	1	Washer (6.5X11.5X2.0) ●
49110	49110-7002	1	Governor ASM ●	92200A	92200-2036	1	Washer (6.2X20X0.5) ●
92002	92002-2269	1	Bolt (6X28) ●	130	130B0618	1	Bolt-Flanged ●
92015	92015-1193	1	Nut ●	214	214B0420	1	Screw-Pan +- (4X20 ) ●
92015A	92015-2051	1	Nut ●	554	554A0600	1	Pin-Snap (1.2 X 21.2) ●
92022	92022-2372	2	Washer (6X19X1.2) ●				

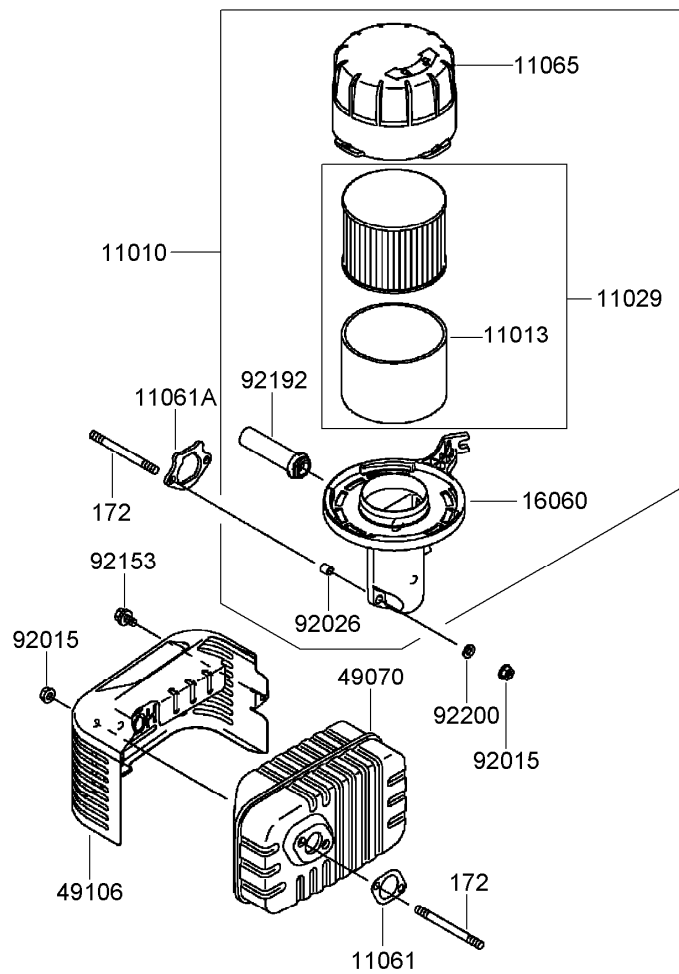
● Obtain parts from [www.kawpowerepc.com](http://www.kawpowerepc.com)



## Carburetor Assembly Kawasaki FJ180V-AS30

Ref.	Part Number	Qty.	Description
11060	11060-2190	1	Gasket ●
11061	11061-7010	1	Gasket-Screw ●
11061A	11061-7015	2	Gasket-Insulator ●
13107	13107-7024	1	Shaft ●
15004	15004-7010	1	Carburetor ASM ●
16009	16009-2136	1	Needle-Jet ●
16014	16014-7008	1	Screw-Air, Pilot ●
16020	16020-7004	1	Chamber-Float ●
16025	16025-7007	1	Valve-Throttle ●
16041	16041-7019	1	Shaft-Carburetor ●
16041A	16041-7020	1	Shaft-Carburetor ●
16073	16073-7006	1	Insulator ●
16183	16183-2002	1	Float ASM ●
16186	16186-7003	1	Choke Valve ASM ●
39076	39076-7001	1	Limiter ●
49121	49121-7014	1	Nozzle-Main ●
92009	92009-2083	1	Screw ●
92009A	92009-2349	1	Screw ●
92063	92063-7067	1	Jet-Main (No 70) ●
92081	92081-2234	1	Spring ●
92093	92093-2100	2	Seal ●
92145	92145-7015	1	Spring ●
92172	92172-7002	1	Screw ●
99916	99916-7007	1	Main Jet K H I Parts Kit ●

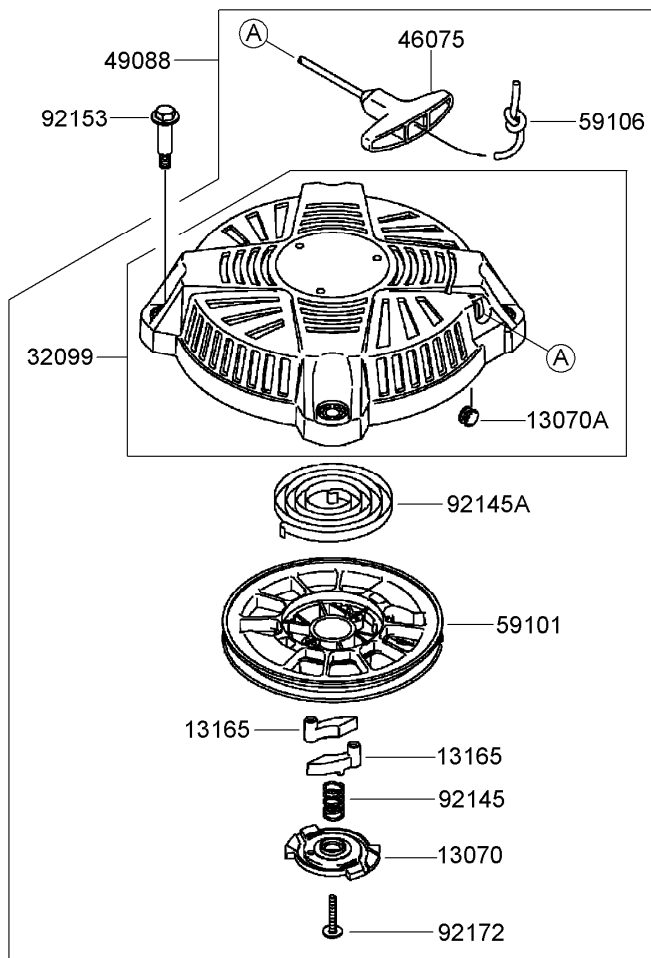
● Obtain parts from [www.kawpowerepc.com](http://www.kawpowerepc.com)



## Air Filter and Muffler Assembly Kawasaki FJ180V-AS30

<i>Ref.</i>	<i>Part Number</i>	<i>Qty.</i>	<i>Description</i>
11010	11010-7021	1	Air Filter ASM ●
11013	11013-7037	1	Element-Filter, Air ●
11029	11029-7023	1	Air Filter Element ASM ●
11061	11061-7029	1	Gasket-Muffler ●
11061A	11061-7075	1	Gasket-Pipe, Intake ●
11065	11065-7018	1	Cap ●
16060	16060-7026	1	Pipe-Intake ●
49070	49070-7022	1	Muffler ●
49106	49106-7021	1	Cover-Muffler ●
92015	92015-1193	4	Nut ●
92026	92026-7021	2	Spacer ●
92153	92153-7023	1	Bolt (6X10) ●
92192	92192-7083	1	Tube ●
92200	92200-7022	2	Washer (6.4X12X1.7) ●
172	172G0680	4	Bolt-Stud (6X80) ●

● Obtain parts from [www.kawpowerepc.com](http://www.kawpowerepc.com)



## Starter Assembly Kawasaki FJ180V-AS30

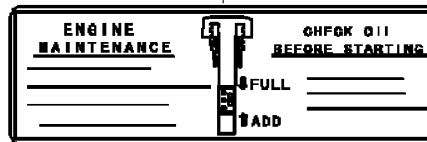
<i>Ref.</i>	<i>Part Number</i>	<i>Qty.</i>	<i>Description</i>
13070	13070-7014	1	Guide ●
13070A	13070-7015	1	Guide ●
13165	13165-7002	2	Pawl-Starter, Recoil ●
32099	32099-7004	1	Case-Starter, Recoil ●
46075	46075-7002	1	Grip ●
49088	49088-7024	1	Starter-Recoil ●
59101	59101-7002	1	Reel-Starter, Recoil ●
59106	59106-7006	1	Rope (1500Mm) ●
92145	92145-7052	1	Spring ●
92145A	92145-7053	1	Spring ●
92153	92153-7021	4	Bolt (M6) ●
92172	92172-7030	1	Screw ●

● Obtain parts from [www.kawpowerepc.com](http://www.kawpowerepc.com)

56070



56033



## Label Assembly Kawasaki FJ180V-AS30

<i>Ref.</i>	<i>Part Number</i>	<i>Qty.</i>	<i>Description</i>
56033	56033-7003	1	Label-Manual •
56070	56070-7001	1	Label-Warning •

• Obtain parts from [www.kawpowerepc.com](http://www.kawpowerepc.com)



**Count on it.**