



# HAYTER

MAKERS OF THE FINEST MOWERS

## INSTRUCTION SHEET

### GROOVED FRONT ROLLER KIT MK3

From Serial No: 867P001001

#### INTRODUCTION

The Kit: Cutterhead Grooved Front Roller MK3 (Code 867P) is designed for fitment to the Hayter MK3 Cutterhead. The way in which the components are fitted and maintained will have a profound effect on performance and reliability.

These instructions are based on information available at the time of publication, Hayter Limited reserve the right to make changes at any time without notice.

#### SPECIFICATIONS

**MODEL:** CODE 867P  
**TYPE:** Grooved Roller  
**DIAMETER:** 79mm  
**WEIGHT:** 10 kg

#### DELIVERY CHECKLIST

Check that all parts are delivered correctly. Remove the components from the carton and check that all loose items have been supplied correctly. Refer to the Parts List on Sheet 4. If any items are missing contact your local Hayter Dealer.

#### ASSEMBLING THE GROOVED FRONT ROLLER TO THE CUTTERHEAD

#### ASSEMBLY

Assemble the grooved front roller to the cutterhead by following the steps outlined below, referring to the Parts List Diagram :

1. Push the threaded end of greasing bolt (6) through spring washer (19) and through the bottom hole in plate (9) adding 2 washers (5). Secure greasing bolt (6) into the threaded hole in the grooved roller (1) leaving 5mm thread.
2. Repeat the above procedure for other end of the roller.
3. Secure lock-nut (14) to the end of roller adjuster (8) and wind down the thread. Place roller adjuster (8) through hole in LH bracket (7) and secure in place using lock-nut (14).
4. Assemble the above assembly to LH plate (9) using the following setscrew (15), washer (5) and nyloc nut (18).
5. Repeat procedures 3 - 4 for the right hand end of the roller.
6. Slot the grooved scraper (2) either side of the grooved roller (1) making sure washers (5) are on the inside of the grooved scraper. Tighten greasing bolts (6) on both ends clamping the scraper.
7. Offer the complete roller assembly up to the front of the cutterhead and secure in place using setscrews (3) washers (13) and nyloc nuts (17).
8. Locate the scraper stop setscrew (4) through the small hole in bracket (9) and secure using washer (12) and nut (16).
9. Repeat the above procedure for the other end of the roller.
10. After adjusting the roller to the correct height tighten all fasteners to the following torque settings: M10 - 45Nm (33 lbs.ft), M12 & item 6 - 70 Nm (51.6 lbs.ft), M6 - 10 Nm (7.4 lbs.ft).
11. Add grease nipples (20) to each end of greasing bolt (6).
12. Grease the roller until grease is expelled from around the end caps.  
(Hayters recommended an anti-seize grease known as BP Keenomax L2).

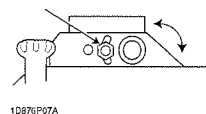
Issued: 17/2/97 Approved: [Signature] Mod. No. 8869 Sheet 1 of 4 Sheet Part No. 882004 (Rev.0.)

Issued: 17/2/97 Approved: [Signature] Mod. No. 8869 Sheet 2 of 4 Sheet Part No. 882004 (Rev.0.)

## OPERATING INSTRUCTIONS - GROOVED FRONT ROLLER KIT MK3

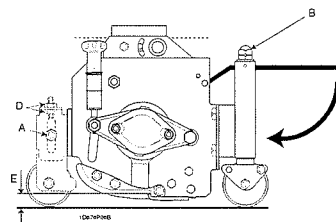
### FLOATING MK3 CUTTERHEAD

**Pivot Plate Fixing:** Secure the bolt in the rear "floating" slot position as shown.



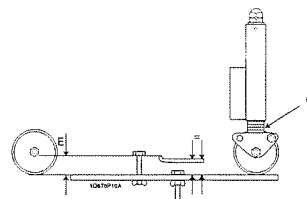
**Height of Cut Adjustment:** The height of cut is gauged by the position of the front and rear rollers.

To alter the rear roller position, turn the adjusting nut assembly 'B' both ends clockwise to decrease height of cut 'E' or anti-clockwise to increase the height of cut 'E'.



**IMPORTANT:** prevent damage - do not attempt to unlock the nut assemblies 'B'.

To alter the front roller position slacken nut 'A' then release and turn adjusting nuts 'D' both ends clockwise to increase the height of cut, or anti-clockwise to decrease the height of cut.



Ensure that all cutterheads are set at the same height of cut by referring to the indicator rings 'C' and using the height of cut gauge as shown across the full width of each cutterhead.

Tighten nuts 'D' and 'A' both ends.

**Front Roller Parked Position:** When changing from floating cutterheads to fixed, the front roller assembly must be removed.

## PARTS LIST - GROOVED FRONT ROLLER KIT MK3

### PARTS LIST

ITEM NO.	DESCRIPTION	PART NO.	QTY
1	Roller Grooved	63-07-080	1
2	Scraper - Grooved Roller	882003W	1
3	Hex. Hd Setscrew M10 x 25	09395	4
4	Setscrew M6 x 16 (Scraper stop screw)	ZDH1F012U	2
5	Plain Washer M12	09485	6
6	Bolt - Greasing	882006	2
7	Bracket Front Roller L.H.	881002W	1
8	Roller Adjuster	881003W	2
9	Plate Roller Adjuster L.H.	882007W	1
10	Bracket Front Roller R.H. (Not Shown)	881007W	1
11	Plate Roller Adjuster R.H. (Not Shown)	882008W	1
12	Plain Washer M6	ZWQ1F000U	2
13	Plain Washer M10	ZWPIJ000U	4
14	M12 Nut Lock	ZNLI000U	4
15	Setscrew M12 x 55	ZDH1L055U	2
16	Nut M6 Nyloc	ZNN1F000U	2
17	Nut M10 Nyloc	ZNN1J000U	4
18	Nut M12 Nyloc	ZNN1L000U	2
19	Washer Spring M12	09599	2
20	Nipple - Grease	63-11-001	2

L.H. Shown

