



Count on it.

Form No. 380-0061 Rev A

Parts Catalog

Network LTC® 1.0 Satellite Controller

Model No. Network LTC 1.0



Ordering Replacement Parts

To order replacement parts, please supply the part number, the quantity, and the description of each part desired.

Understanding Reference Numbers

Each identified part in an illustration has a reference number. The reference number for a part also appears in the parts list, along with other information about the part.

This catalog uses two special reference number formats, one to indicate parts in a service assembly and another to indicate the quantity of a given part in an illustration.

Service Assembly Reference Numbers

Parts in service assemblies have reference numbers in the form a:b. The a represents the reference number of the entire service assembly and the b represents a sequential number unique to each part within the service assembly.

For example, a wheel assembly might be identified by reference number 6, the tire by 6:1, the valve by 6:2, and the wheel by 6:3. When you order the assembly identified by reference number 6, you receive all parts identified by reference numbers 6:1, 6:2, and 6:3. However, you may also order any part individually. Reference numbers of this type appear in illustration and in parts lists.

Reference Numbers Indicating Quantity

In an illustration, if a reference number indicates more than one part, the reference number has the form nX y. The n represents the quantity of the part, the X is the multiplication symbol, and the y represents the reference number.

For example, in an illustration, the reference number 2X 37 means that two of the parts identified by reference number 37 are indicated.

List of Abbreviations

AR: as required

ASM: assembly

BBC: blade brake control

BHTF: button head thread forming

CARR: carriage

CCW: counter clockwise

CW: clockwise

DEG: degrees

DPA: Dual Point Adjustment

ECM: electronic control module

EXT: external

FH: flat head

GA: gauge

HD: heavy-duty

HF: hex flange

HH: hex head

HHF: hex head flange

HHFTF: hex head flange thread forming

HJ: hex jam

HLH: hex lag head

HOC: height-of-cut

HSBH: hex socket button head

HSFH: hex socket flat head

HSH: hex socket head

HWH: hex washer head

HWHTF: hex washer head thread forming

HYD: hydraulic

LH: left hand

LPG: Liquid Propane Gas

NI: nylon insert

NPTF: national pipe thread fine

PFH: phillips flat head

PPH: phillips pan head

PPHTF: phillips pan head thread forming

PRH: phillips round head

PTH: phillips truss head

PTO: power-take-off

RH: right hand

ROPS: roll-over protection system

RRB: rear roller brush

SFH: slotted fillister head

SHH: slotted hex head

SHWH: slotted hex washer head

SPH: slotted pan head

SQH: square head

SRH: slotted round head

STD: standard

TAP: self tapping

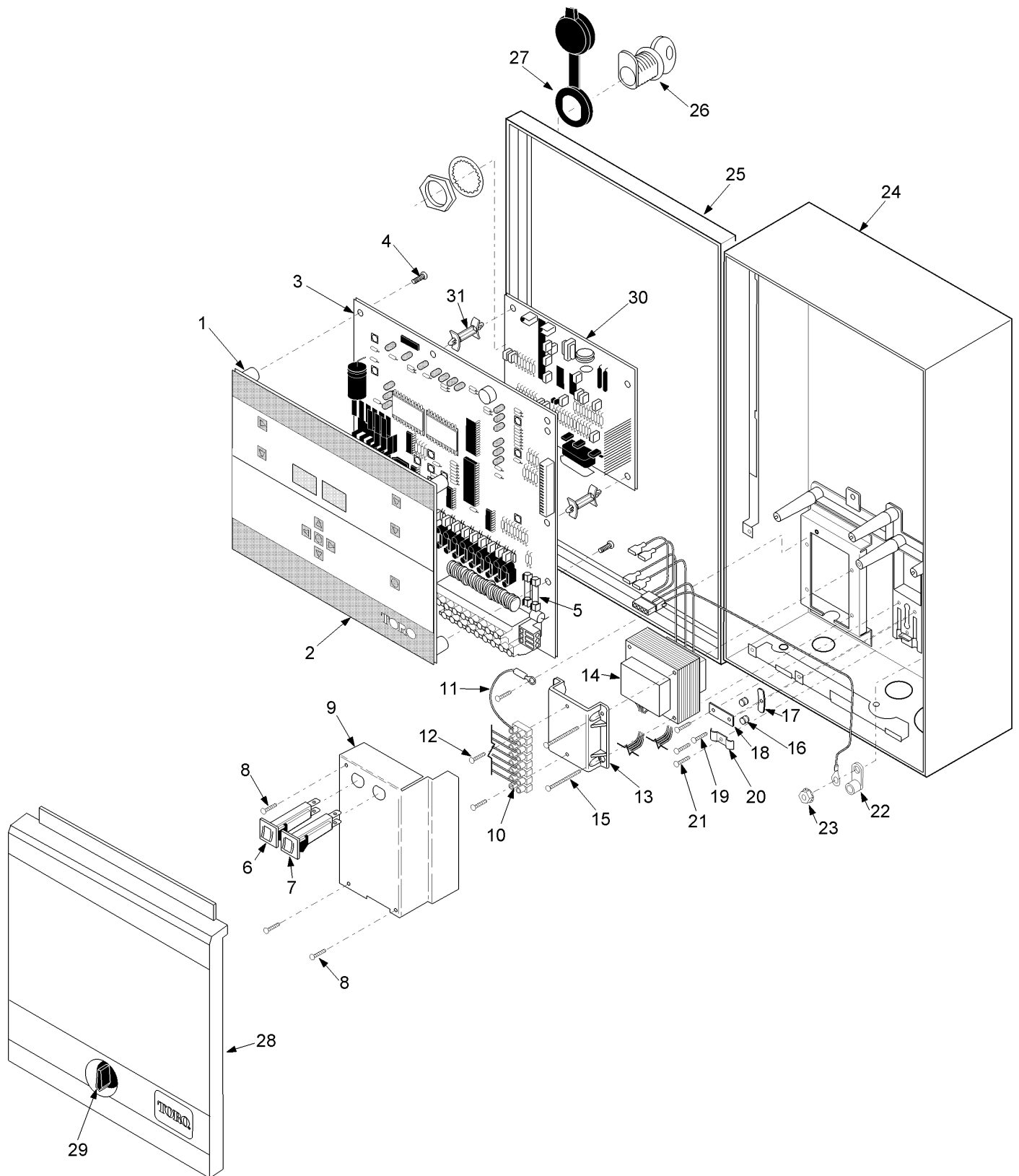
TTH: torx truss head

Contents

Network LTC 1.0 Satellite - Wall Mount Cabinet 4

Network LTC Satellite 1.0 - Taper-top Cabinet..... 6

Network LTC 1.0 Satellite - Wall Mount Cabinet



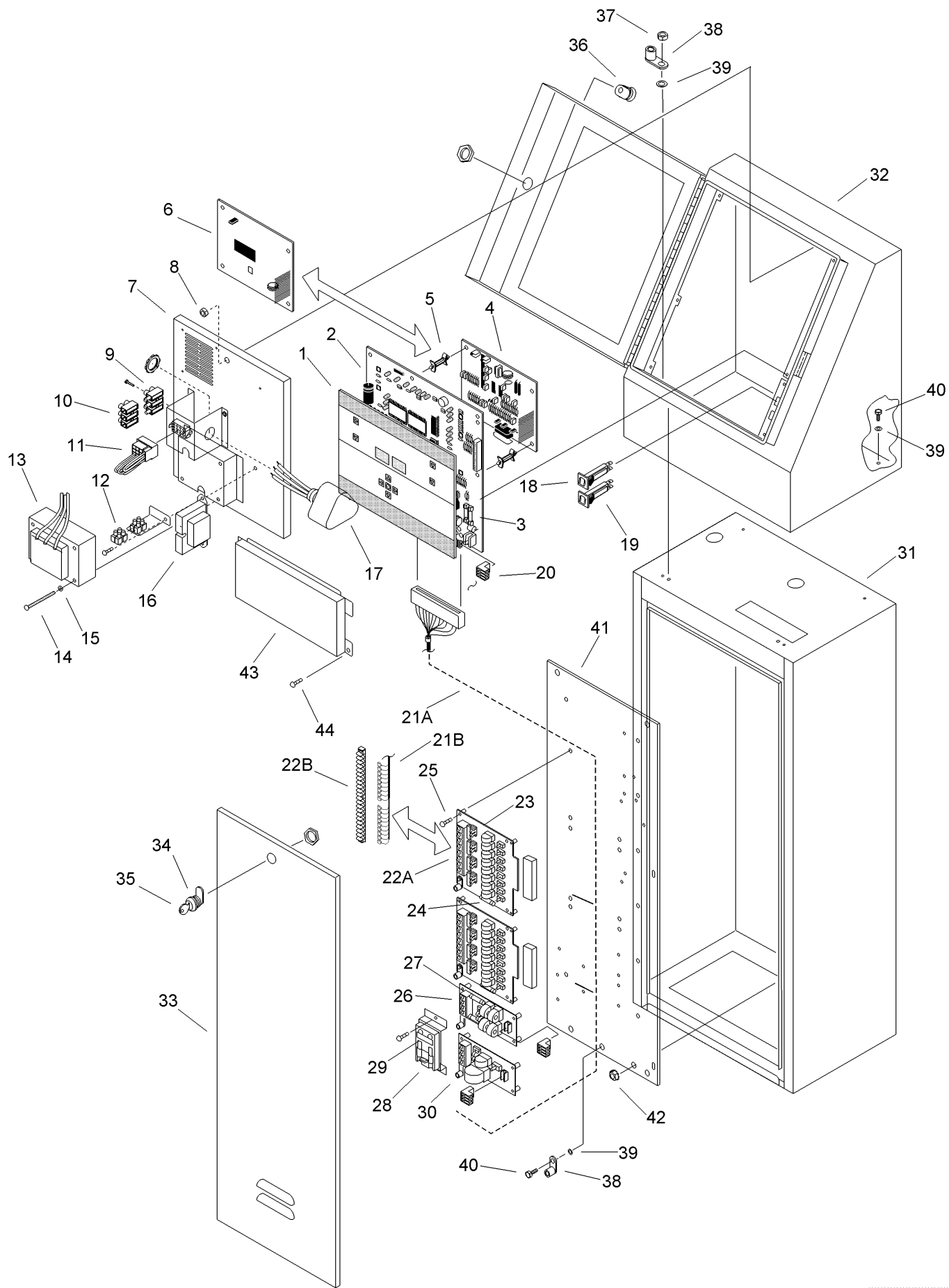
Network LTC 1.0 Satellite - Wall Mount Cabinet (continued)

<i>Ref.</i>	<i>Part Number</i>	<i>Qty.</i>	<i>Description</i>	<i>Ref.</i>	<i>Part Number</i>	<i>Qty.</i>	<i>Description</i>
1	91-0547	1	Front Plate Assy.	21	363-5255	1	Screw, Machine, #6-32
2	91-0784	1	Overlay, Ltc	22	363-1553	1	Lug, Grounding
3	91-0545	1	Pcb Assy., Ltc	23	360-0594	1	Nut-Hex
4	363-1355	5	Screw, Tap, #6	24		1	Cabinet Assy. ▲
5	363-2638	2	Fuse, .5 Amp	25		1	Door Assy. ▲
6	363-5271	1	Circuit Breaker, 0.75A	26	363-1414	1	Lock
7	363-5270	1	Circuit Breaker, 4.0A	27	9-4303	1	Cover, Lock
8	4-1063	3	Screw, Tap, #6	28	91-0782	1	Cover, Terminal
9		1	Cover, Transformer ▲	29	363-2351	1	Latch, Pawl
10	363-5219	1	Terminal Block, 8-Position	30	91-0777	1	Pcb Assy., Modem
11	91-1005	1	Wire Assy., Green/Yellow	30	91-1046	1	Pcb Assy., Vt Adapter
12	363-2033	2	Screw, Hi-Lo, #4-24	31	363-2437	4	Standoff
13	91-1030	1	Mount, Terminal Block		91-0786		Switch Actuator ■●
14	91-0919	1	Transformer Assy.		360-0565		Keys, 2 W/ Ring (Golf #1382) ■●
15	363-3103	2	Screw, Tap, #6-19 X 3/4, Phph		91-1331		Kit, Modem (Includes Items 30 & 31) ■●
16	360-0471	2	Surge Protector		91-1200		Kit, Vt Adapter (Includes Transformer And Installation Accessories) ■●
17	91-0790	1	Term. Plate, Contact		91-1213		Kit, Vt Adapter Transformer, Service ■●
18	35-7524	1	Strap				
19	363-2431	2	Screw, #6 X 1/2, Hi-Lo W/Clamp				
20	363-2271	1	Clamp, Cable				

● SERVICE ITEMS
▲ Not serviced separately

■ Not illustrated

Network LTC Satellite 1.0 - Taper-top Cabinet



Network LTC Satellite 1.0 - Taper-top Cabinet (continued)

<i>Ref.</i>	<i>Part Number</i>	<i>Qty.</i>	<i>Description</i>	<i>Ref.</i>	<i>Part Number</i>	<i>Qty.</i>	<i>Description</i>
1	91-1591	1	Front Panel Assy., Tm	31	91-1587	1	Cabinet, 30" Galvanized (Includes Items 33-35)
2	91-2337	1	Pcb Assy., Tm	31		1	Cabinet, 30" Sst (See Service Item 89-7486) ▲
3	363-2638	2	Fuse, Fast Blow, 0.5 Amp	32	91-1586	1	Cabinet, Taper Top, Galvanized (Includes Items 35 & 36)
4	91-1331	1	Pcb Assy., Ltc Modem	32		1	Cabinet, Taper Top, Sst (See Service Item 89-7486) ▲
5	363-2437	4	Standoff, Dual Locking	33		1	Door, Cabinet, 30" Galvanized (See Service Item 89-7485) ▲
6	91-1046	1	Pcb Assy., Vt Adapter	33		1	Door, Cabinet, 30" Sst (See Service Item 89-7486) ▲
7		1	Backplate, Upper ▲	34	363-5369	1	Lock Assy., W/Keys, Door (Includes Item 35)
8	363-1752	1	Nut, Hex, Locking	35	360-0565	1	Keys, Two W/ Ring (Golf #1382)
9	363-3215	1	Terminal Block, Plug, 3-Position	36		1	Lock Assy W/ Keys, Cabinet, Taper Top (Includes Item 35) ▲
10	363-3216	1	Terminal Block, Socket, 3-Position	37	360-0594	1	Nut, 1/4-20
11		4	Power Connector ▲	38	363-1553	2	Lug, Grounding
12	363-3230	1	Terminal Block, Plug, 2-Position	39	363-1623	6	Washer, Lock
13	91-1636	1	Transformer	40	360-0595	4	Screw, Machine, 1/4-20 X 1/2"
14	363-3205	4	Screw, #8-32 X 1.5"	41	91-1441	1	Mounting Plate, Rear
15	360-0600	4	Washer, Lock, Ext T	42	363-3236	4	Hex Nut, 5/16"
16	363-1740	1	Transformer (Vt)	43		1	Cover, Access ▲
17	363-3202	1	Surge Protector	44	1-3076	2	Screw, Machine
18	363-5271	1	Circuit Breaker, 0.75 Amp		91-1593		Timing Mechanism Assy. (Includes Items 1-3) ●■
19	363-5270	1	Circuit Breaker, 4.0 Amp		89-7485		Cabinet Assy., Galvanized (Includes Items 31-40) ●■
20	363-2231	1	Connector, 3-Pin, Female		89-7486		Cabinet Assy., Sst (Includes Items 31-40) ●■
21A	91-1641	1	Cable Assy., Surge				
21B	91-1639	1	Cable Assy., Non-Surge				
22A	91-1957	2	Pcb, Surge Protection, 8-Station				
22B	363-3200	1	Terminal Block, 20-Position				
23	360-0471	16	Surge Protector (Pill)				
24	363-1222	2	Fuse, 3 Amp, Slow-Blow				
25	363-5362	16	Screw, Tap				
26	91-1307	1	Pcb Assy., Surge Protection, Communication				
27	363-2638	2	Fuse, Fast Blow, 0.5 Amp				
28	35-8833	1	Bracket Assembly, Communication				
29	360-0471	2	Surge Protector (Pill)				
30	91-1305	1	Pcb Assy., Surge Protection, Pump/Com				

● SERVICE ITEMS
▲ Not serviced separately

■ Not illustrated



Count on it.