



**Count on it.**

Form No. 380-0062 Rev A

# Parts Catalog

## Network LTC<sup>®</sup> 2.0 Satellite Controller

Model No. Network LTC 2.0



# Ordering Replacement Parts

To order replacement parts, please supply the part number, the quantity, and the description of each part desired.

## Understanding Reference Numbers

Each identified part in an illustration has a reference number. The reference number for a part also appears in the parts list, along with other information about the part.

This catalog uses two special reference number formats, one to indicate parts in a service assembly and another to indicate the quantity of a given part in an illustration.

## Service Assembly Reference Numbers

Parts in service assemblies have reference numbers in the form a:b. The a represents the reference number of the entire service assembly and the b represents a sequential number unique to each part within the service assembly.

For example, a wheel assembly might be identified by reference number 6, the tire by 6:1, the valve by 6:2, and the wheel by 6:3. When you order the assembly identified by reference number 6, you receive all parts identified by reference numbers 6:1, 6:2, and 6:3. However, you may also order any part individually. Reference numbers of this type appear in illustration and in parts lists.

## Reference Numbers Indicating Quantity

In an illustration, if a reference number indicates more than one part, the reference number has the form nX y. The n represents the quantity of the part, the X is the multiplication symbol, and the y represents the reference number.

For example, in an illustration, the reference number 2X 37 means that two of the parts identified by reference number 37 are indicated.

# List of Abbreviations

**AR:** as required

**ASM:** assembly

**BBC:** blade brake control

**BHTF:** button head thread forming

**CARR:** carriage

**CCW:** counter clockwise

**CW:** clockwise

**DEG:** degrees

**DPA:** Dual Point Adjustment

**ECM:** electronic control module

**EXT:** external

**FH:** flat head

**GA:** gauge

**HD:** heavy-duty

**HF:** hex flange

**HH:** hex head

**HHF:** hex head flange

**HHFTF:** hex head flange thread forming

**HJ:** hex jam

**HLH:** hex lag head

**HOC:** height-of-cut

**HSBH:** hex socket button head

**HSFH:** hex socket flat head

**HSH:** hex socket head

**HWH:** hex washer head

**HWHTF:** hex washer head thread forming

**HYD:** hydraulic

**LH:** left hand

**LPG:** Liquid Propane Gas

**NI:** nylon insert

**NPTF:** national pipe thread fine

**PFH:** phillips flat head

**PPH:** phillips pan head

**PPHTF:** phillips pan head thread forming

**PRH:** phillips round head

**PTH:** phillips truss head

**PTO:** power-take-off

**RH:** right hand

**ROPS:** roll-over protection system

**RRB:** rear roller brush

**SFH:** slotted fillister head

**SHH:** slotted hex head

**SHWH:** slotted hex washer head

**SPH:** slotted pan head

**SQH:** square head

**SRH:** slotted round head

**STD:** standard

**TAP:** self tapping

**TTH:** torx truss head

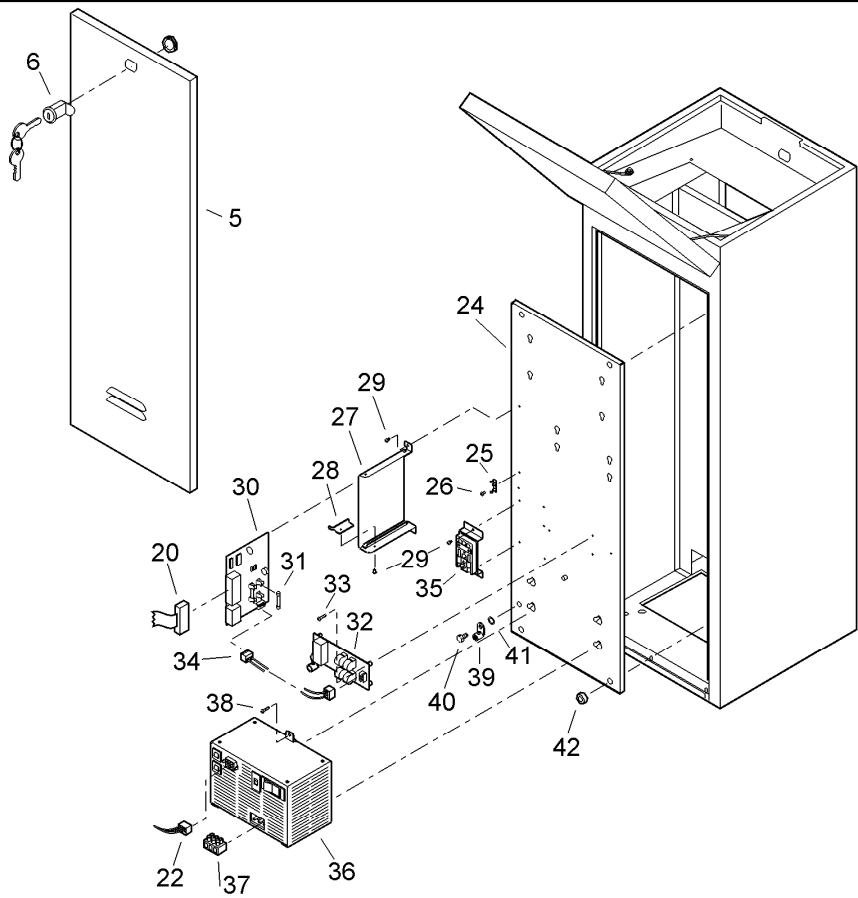
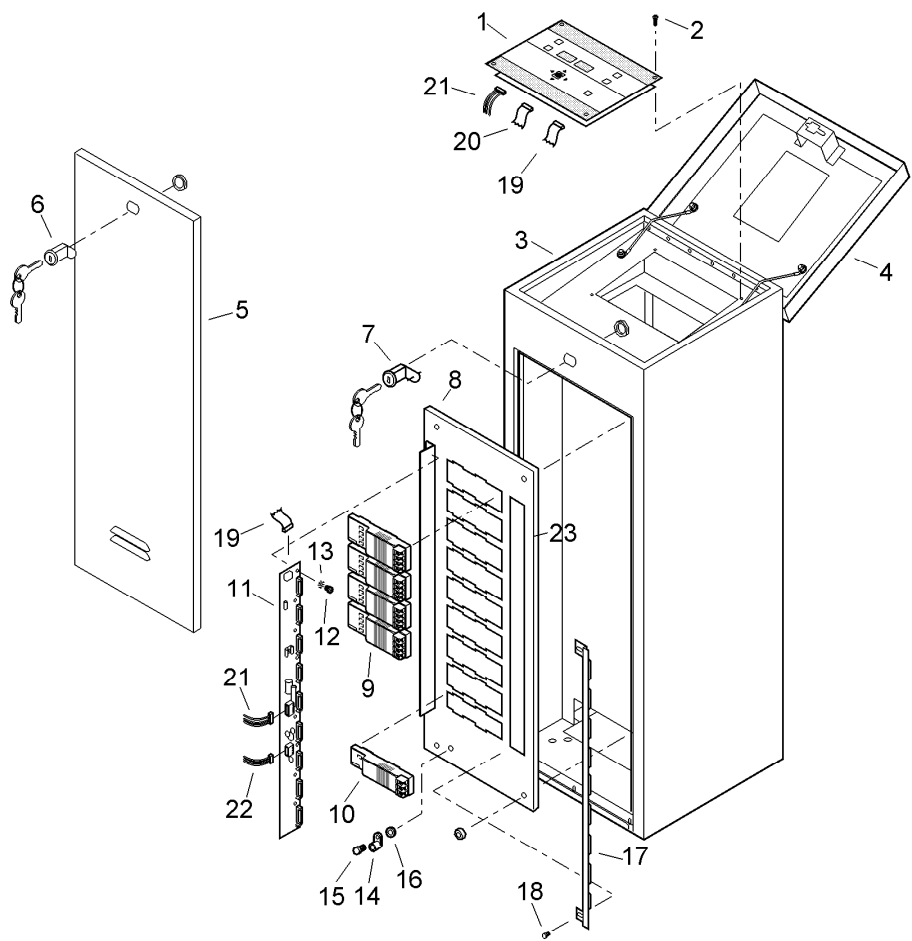
# Contents

Network LTC Satellite 2.0 - Metal Cabinet (1 of 3)..... 4

Network LTC Sat. 2.0, Network DR2 PS Assy (3 of 3) ..... 6

Network LTC Satellite 2.0 - Plastic Cabinet (2 of 3)..... 8

# Network LTC Satellite 2.0 - Metal Cabinet (1 of 3)



# Network LTC Satellite 2.0 - Metal Cabinet (1 of 3) (continued)

| <i>Ref.</i> | <i>Part Number</i> | <i>Qty.</i> | <i>Description</i>                              | <i>Ref.</i> | <i>Part Number</i> | <i>Qty.</i> | <i>Description</i>   |
|-------------|--------------------|-------------|---|-------------|--------------------|-------------|--|
| 1           | 89-7708            | 1           | Timing Mechanism Assy., Ltc 2.0                 | 30          | 89-7680            | 1           | Modem Assy., Ltc/Vt Adapter, 2.0   |
| 2           | 360-0285           | 4           | Screw, Machine, 6-32 X 3/8                      | 31          | 102-3819           | 2           | Fuse, 0.75 Amp (10-Pack)   |
| 3           | 89-7983            | 1           | Pedestal Assy. 13 X 13 Sst (Includes Items 3-8) | 32          | 91-1307            | 1           | Pcb Assy., Surge Protection, Communication   |
| 4           |                    | 1           | Lid Assy., Pedestal (See Item 89-7983) ▲        | 33          | 363-5362           | 4           | Screw, Tap, #6   |
| 5           |                    | 2           | Door Assy., Pedestal (See Item 89-7983) ▲       | 34          | 91-1405            | 1           | Cable Assy., Comm.   |
| 6           | 363-5369           | 2           | Lock Assy., Door                                | 35          | 35-8833            | 1           | Bracket Assembly, Com Cable  |
| 7           | 9-1695             | 1           | Lock Assy., Lid                                 | 36          |                    | 1           | Power Supply (See Power Supply Assembly Section) ▲                                       |
| 8           | 89-6730            | 1           | Back Plate, Module                              | 37          | 363-3216           | 1           | Terminal Block, Socket   |
| 9           | MOD-S4             | 4           | Module Assy., Output ♦                          | 38          |                    | 1           | Screw, Tap, 10-32 X 3/8" ▲   |
| 10          | 89-7711            | 1           | Module Assy., Pump                              | 39          | 363-1553           | 1           | Lug, Grounding   |
| 11          | 89-7710            | 1           | Back Plane Pcb Assy.                            | 40          |                    | 1           | Screw, Machine, 1/4-20 X 1/2" ▲  |
| 12          | 360-0498           | 10          | Screw, Machine, 8-32 X 1/4"                     | 41          |                    | 1           | Washer, Lock, Internal Tooth, 1/4" ▲   |
| 13          |                    | 10          | Washer, Lock, #8 ▲                              | 42          |                    | 8           | Nut, 5/16-20 ▲   |
| 14          | 363-1553           | 1           | Lug, Grounding                                  |             | 360-0565           |             | Keys, Two W/ Ring (Golf #1382) ●■  |
| 15          |                    | 1           | Screw, Machine, 1/4-20 X 1/2" ▲                 |             | 89-7701            |             | Modem Assy., Universal, Service ■●   |
| 16          |                    | 1           | Washer, Lock, Internal Tooth, 1/4" ▲            |             | 89-7709            |             | Back Plate Assy. W/ Output Modules (Includes Items 8-18) ●■                              |
| 17          | 89-7394            | 1           | Lock, Module                                    |             | 89-7705            |             | Back Plate Assy. W/Power Supply (Includes Items 24-42) ●■                                |
| 18          |                    | 2           | Screw, Machine, 10-32 ▲                         |             | 363-2200           |             | Battery, 3.9V ■●   |
| 19          | 89-7706            | 1           | Cable Assy., Output Module                      |             | 89-7172            |             | Eprom Rev. 2.5 ■●  |
| 20          | 35-6328            | 1           | Cable Assy., Modem                              |             | 89-8118            |             | 2.5 Upgrade Kit (Includes 2.5 Eprom, Installation Instructions, And Faceplate Decal) ♦■● |
| 21          | 89-7707            | 1           | Cable Assy., Power To Tm                        |             |                    |             |  |
| 22          | 89-7335            | 1           | Cable Assy., Power Supply                       |             |                    |             |  |
| 23          | 35-6394            | 1           | Label, Station                                  |             |                    |             |  |
| 24          | 89-6944            | 1           | Back Plate, Power Supply                        |             |                    |             |  |
| 25          | 35-7288            | 1           | Clip, Grounding                                 |             |                    |             |  |
| 26          | 1-3082             | 1           | Screw, Machine, #4-40 X 1/2", Electric          |             |                    |             |  |
| 27          | 35-8570            | 1           | Bracket, Modem                                  |             |                    |             |  |
| 28          | 35-8704            | 1           | Bracket, Retainer, Lower                        |             |                    |             |  |
| 29          | 363-5072           | 5           | Screw, Tap, #6                                  |             |                    |             |  |
| 30          | 89-7852            | 1           | Modem Assy., Standard (Includes Item 31)        |             |                    |             |  |

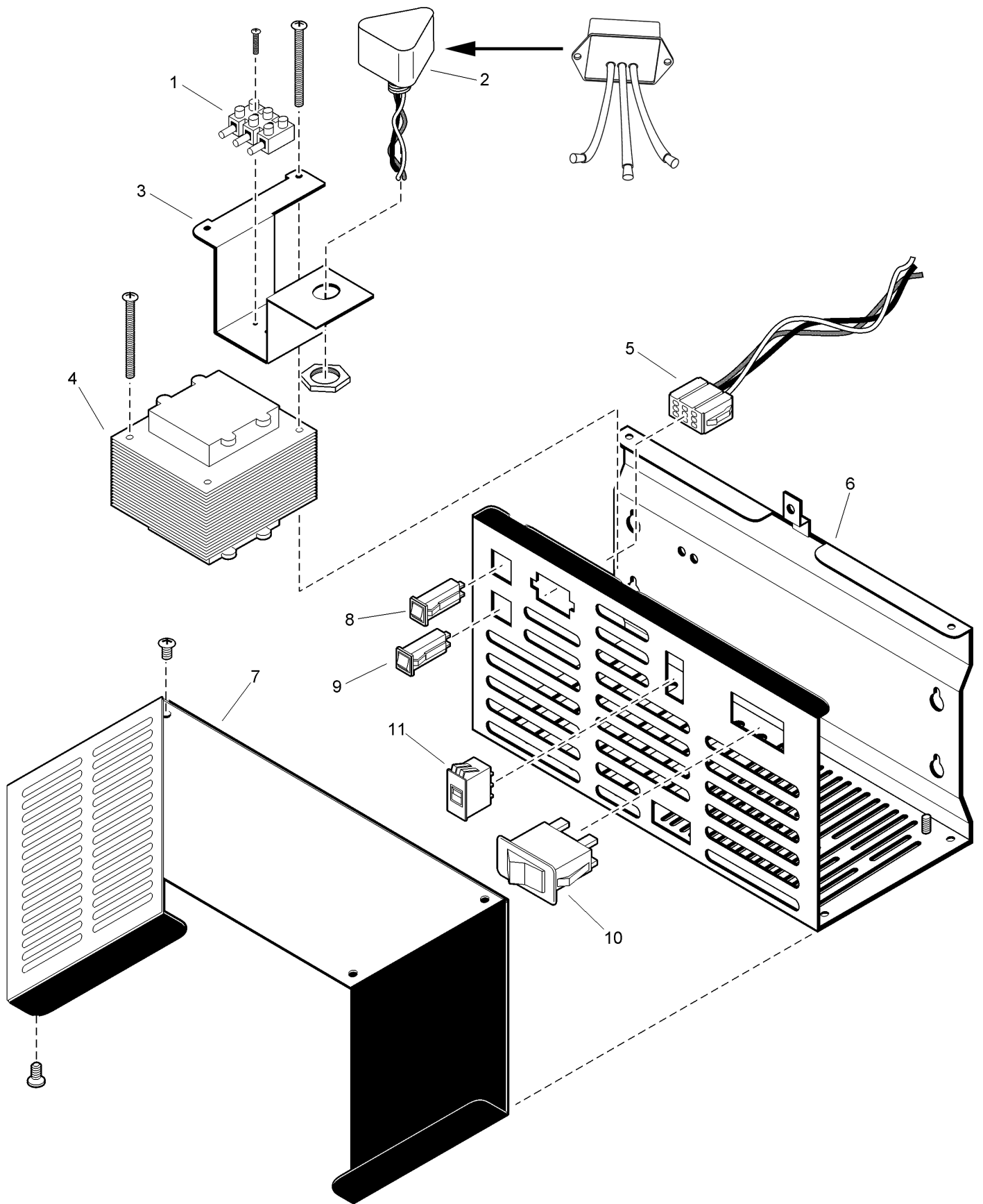
● SERVICE ITEMS

▲ Not serviced separately

♦ Order Through Finished Goods Distribution System - Minneapolis

■ Not illustrated

# Network LTC Sat. 2.0, Network DR2 PS Assy (3 of 3)



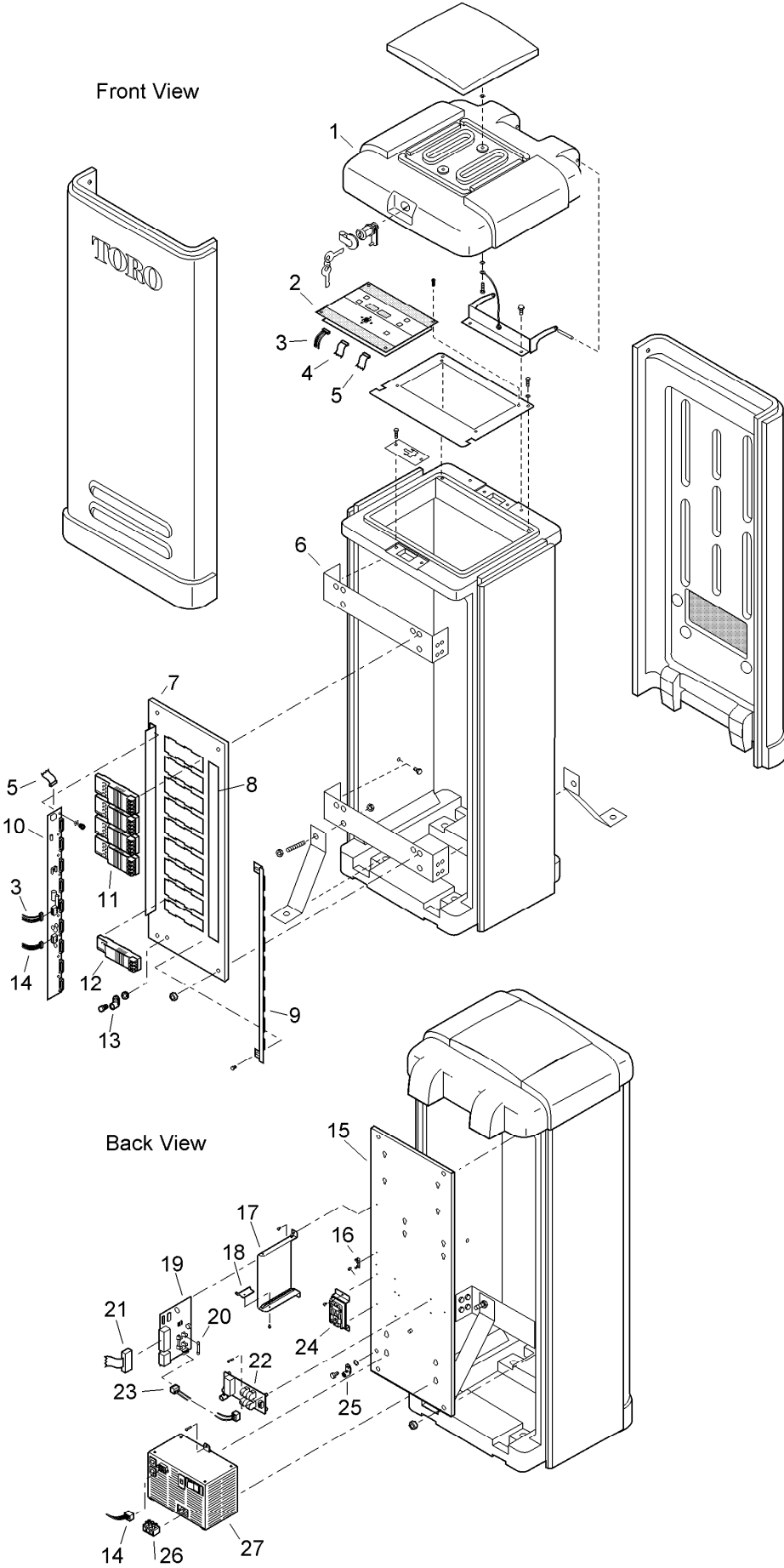
## Network LTC Sat. 2.0, Network DR2 PS Assy (3 of 3) (continued)

| <i>Ref.</i> | <i>Part Number</i> | <i>Qty.</i> | <i>Description</i>                     | <i>Ref.</i> | <i>Part Number</i> | <i>Qty.</i> | <i>Description</i>  |
|-------------|--------------------|-------------|--|-------------|--------------------|-------------|---|
| 1           | 363-3215           | 1           | Terminal Block, Plug, 3-Position       | 9           | 363-5270           | 1           | Circuit Breaker, 4.0 Amp  |
| 2           | 118-0589SK         | 1           | Surge Protector (Replaces Older Model) | 10          | 363-3361           | 1           | Switch, Circuit Breaker, 1.5A   |
| 3           |                    | 1           | Bracket, Surge ▲                       | 11          | 102-0648           | 1           | Slide Switch 115/230V A.C. Selection (Ltc Only)   |
| 4           | 89-7334            | 1           | Transformer Assembly, Ltc 2.0          |             | 89-7702            |             | Power Supply Assy., Svc., Ltc 2.0 (Includes Items 1-11) ● ■                               |
| 4           | 89-7767            | 1           | Transformer Assembly, Dr2              |             | 89-7766            |             | Power Supply Assy., Svc., Network Dr2 (Early Production Models) (Includes Items 1-10) ● ■ |
| 5           |                    | 1           | Socket, 9-Pin ▲                        |             |                    |             |   |
| 6           |                    | 1           | Case, Power Supply ▲                   |             |                    |             |   |
| 7           |                    | 1           | Cover, Power Supply ▲                  |             |                    |             |   |
| 8           | 363-3467           | 1           | Circuit Breaker, 2.0 Amp               |             |                    |             |   |

● SERVICE ITEMS  
▲ Not serviced separately

■ Not illustrated

# Network LTC Satellite 2.0 - Plastic Cabinet (2 of 3)





## Network LTC Satellite 2.0 - Plastic Cabinet (2 of 3) (continued)

| <i>Ref.</i> | <i>Part Number</i> | <i>Qty.</i> | <i>Description</i>  | <i>Ref.</i> | <i>Part Number</i> | <i>Qty.</i> | <i>Description</i>   |
|-------------|--------------------|-------------|---|-------------|--------------------|-------------|--|
| 1           |                    | 1           | Satellite Plastic Pedestal & Components (See Satellite Plastic Pedestal And Components Section) ▲ | 18          | 35-8704            | 1           | Bracket, Retainer, Lower   |
| 2           | 89-7708            | 1           | Timing Mechanism Assy., Ltc 2.0   | 19          | 89-7852            | 1           | Modem Assy., Standard, Service   |
| 3           | 89-7707            | 1           | Cable Assy., Power To Tm  | 20          | 102-3819           | 2           | Fuse, 0.75 Amp (10-Pack)   |
| 4           | 35-6328            | 1           | Cable Assy., Modem  | 21          | 35-6328            | 1           | Cable Assy., Modem   |
| 5           | 89-7057            | 1           | Cable Assy., Output Module  | 22          | 91-1307            | 1           | Pcb Assy., Surge Protection, Communication   |
| 6           |                    | 2           | Bracket ▲   | 23          | 91-1405            | 1           | Cable Assy., Comm.   |
| 7           | 89-6730            | 1           | Back Plate, Module  | 24          | 35-8833            | 1           | Bracket Assembly, Com Cable  |
| 8           | 35-6394            | 1           | Label, Station  | 25          | 363-1553           | 1           | Lug, Grounding   |
| 9           | 89-7394            | 1           | Lock, Module  | 26          | 363-3216           | 1           | Terminal Block, Socket   |
| 10          | 89-7710            | 1           | Back Plane Pcb Assy.  | 27          |                    | 1           | Power Supply Assy. (See Power Supply Assembly Section) ▲                             |
| 11          | MOD-S4             |             | Module Assy., Output ♦  |             |                    |             |  |
| 12          | 89-7711            | 1           | Module Assy., Pump  |             | 363-2200           |             | Battery, 3.9 Volt, Lithium ■●  |
| 13          | 363-1553           | 1           | Lug, Grounding  |             | 89-7172            |             | Eprom Rev. 2.5 ■●  |
| 14          | 89-7335            | 1           | Cable Assy., Power Supply   |             | 89-8118            |             | 2.5 Upgrade Kit (Includes Eprom, Installation Instructions, And Faceplate Decal) ♦■● |
| 15          | 89-6944            | 1           | Back Plate, Power Supply  |             |                    |             |  |
| 16          | 35-7288            | 1           | Clip, Ground  |             |                    |             |  |
| 17          | 35-8570            | 1           | Bracket, Modem  |             |                    |             |  |

● SERVICE ITEMS

▲ Not serviced separately

♦ Order Through Finished Goods Distribution System - Minneapolis

■ Not illustrated

**Notes:**

**Notes:**



**Count on it.**