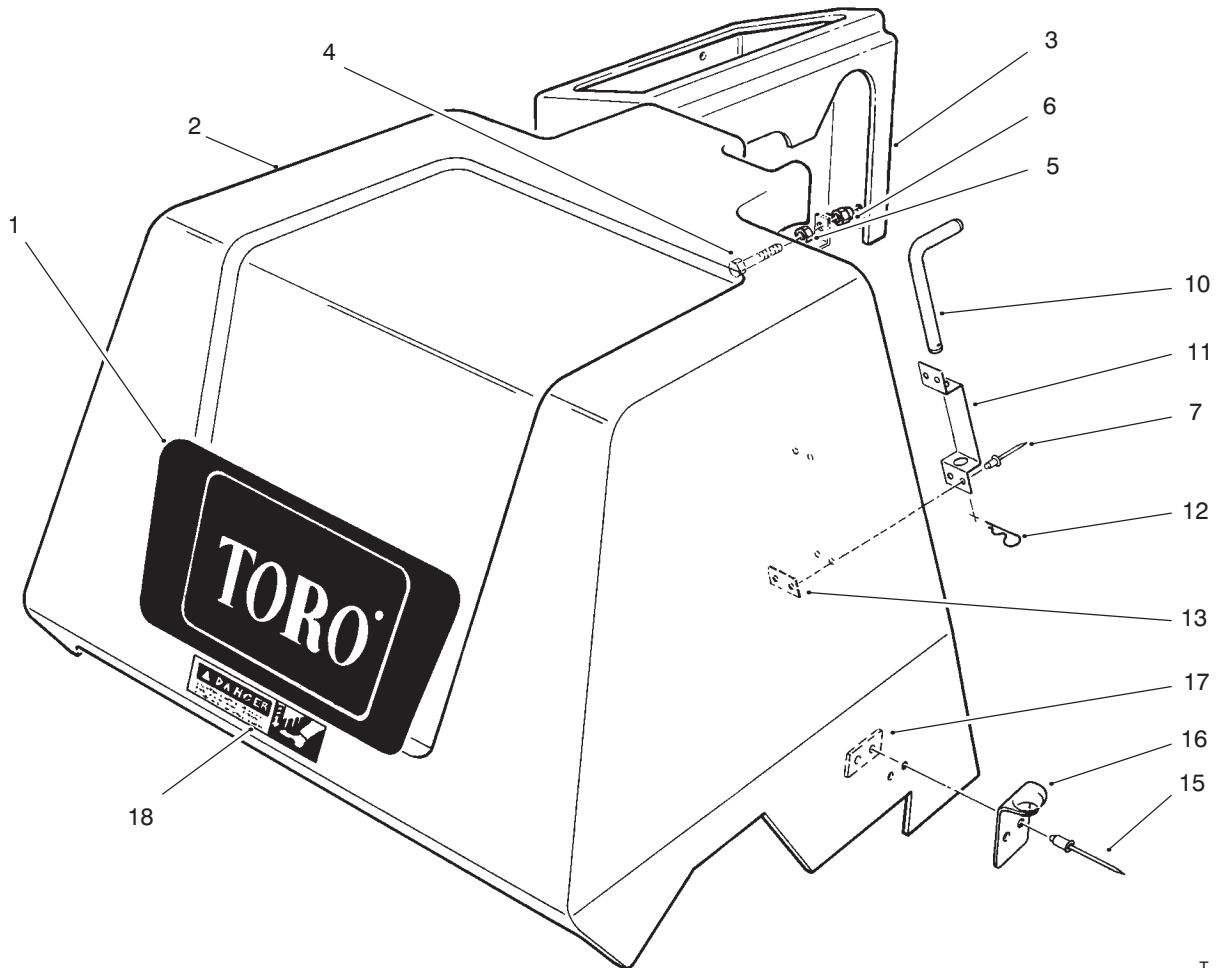




MODEL NO. 09120-70001 & UP

PARTS
CATALOG

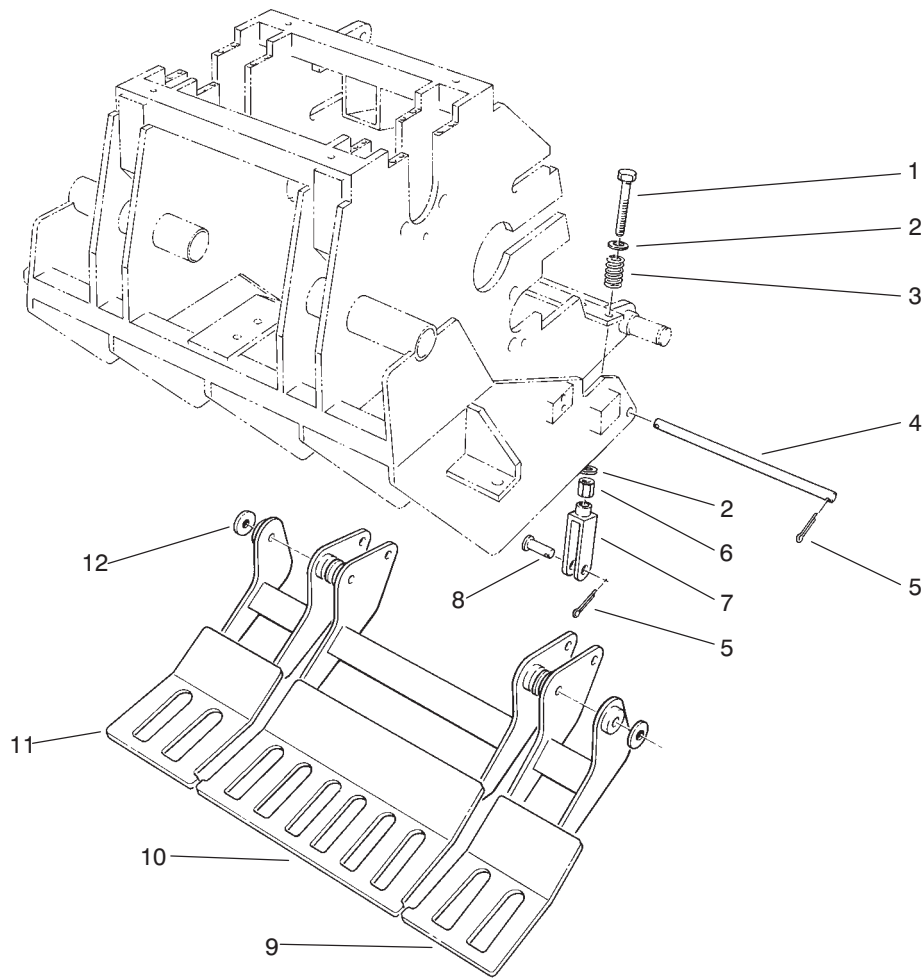
GREENS AERATOR



T-0223-1

COVER ASSEMBLY

Ref. No.	Part No.	Description	No. Used	Ref. No.	Part No.	Description	No. Used
1	59-4350	Decal - Toro	1	11	66-4440	Holder - Idler Pin	1
2	66-4130	Cover - Coring Head	1	12	3290-355	Pin - Hair, Cotter	1
3	66-4110	Cover - Controls	1	13	59-9610	Plate - Backup	2
4	322-2	Screw - Cap Hex Hd.	1	15	3269-4	Rivet - Pop	4
5	3218-2	Nut - Jam	1	16	249-38	Keeper	2
6	32111-8	Cap & Locknut	1	17	59-9611	Plate - Backup	2
7	3269-8	Rivet - Pop	4	18	59-9930	Decal - Danger	1
10	66-4060	Pin - Idler	1				

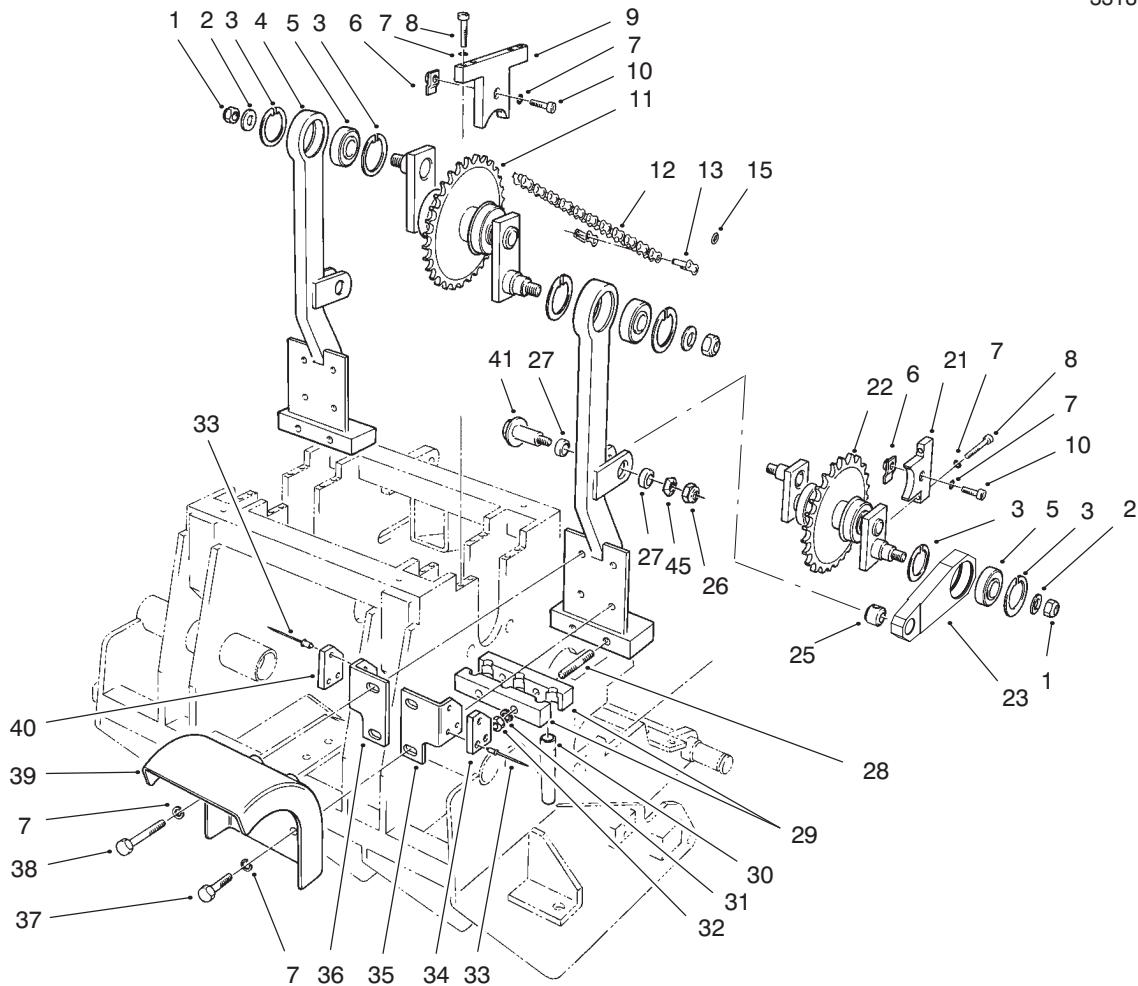


T-0224-2

TURF GUARD ASSEMBLY

Ref. No.	Part No.	Description	No. Used
1	3211-12	Screw-HH	4
2	3256-4	Washer - Flat	8
3	59-3490	Spring - Compression	4
4	59-2770	Rod - Pivot	2
5	3272-6	Pin - Cotter	8
6	3219-3	Nut - Hex.	4

Ref. No.	Part No.	Description	No. Used
7	282-22	Clevis	4
8	283-2	Pin - Clevis	4
9	72-4660	Turf Guard - R.H.	1
10	72-4680	Turf Guard - Center	1
11	72-4640	Turf Guard - L.H.	1
12	3256-26	Washer - Flat	6



T-0225-2

TINE ARM & CRANK ASSEMBLY

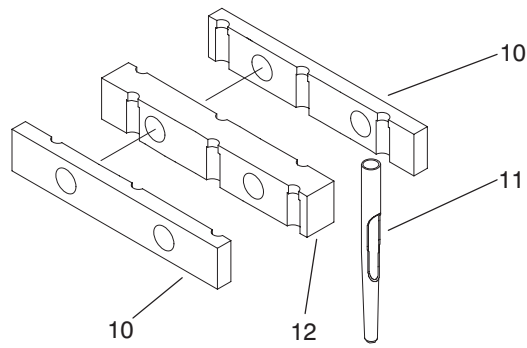
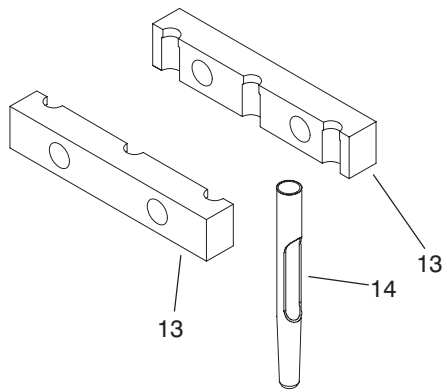
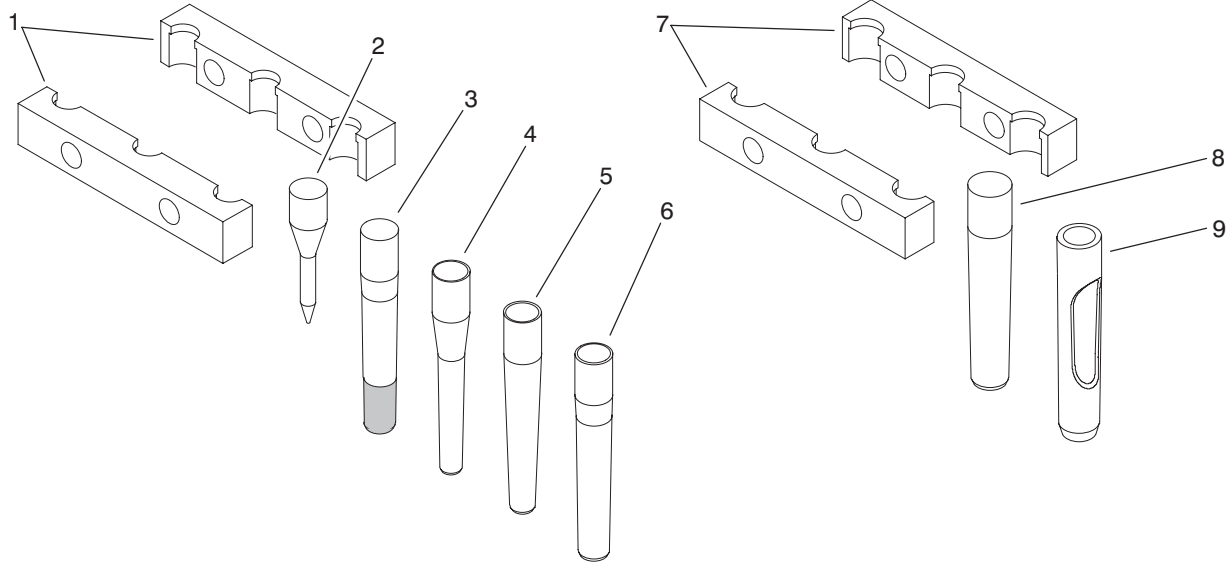
Ref. No.	Part No.	Description	No. Used	Ref. No.	Part No.	Description	No. Used
1	3296-67	Nut - Hex	8	27	59-3510	Bushing - Short	8
2	3256-44	Washer - Flat	8	28	61-9160	Stud	8
3	32120-22	Ring - Retaining	16	■29		Block	
4	13-1509	Arm-Tine (Incl. Ref. #1, 27 & 28)	4	■30		Tine	
5	251-312	Bearing	8	31	3253-7	Washer - Lock	8
6	59-2710	Clip - Retaining	12	32	3217-9	Nut-Hex	8
7	3253-21	Washer - Lock	52	33	3269-3	Rivet - Pop	24
8	3274-50	Screw - HSH	24	34	59-2520	Plate - Wear R.H.	4
†9		Cap-Bearing	4	35	66-8980	Asm. - Wear Plate, R.H. (Incl. Ref. #33 & 34)	4
10	3274-7	Screw - HSH	12	36	66-8990	Asm. - Wear Plate, L.H. (Incl. Ref. #33 & 40)	4
11	66-4030	Assembly - Crank, Long	2	37	323-6	Screw - HH	8
12	59-2080	Chain - Roller	2	38	323-11	Screw - HH	8
13	287-13	Link - Connecting	2	39	59-4220	Deflector - Kickout	4
15	72-4760	O-Ring Seal, Chain	A/R	40	59-2550	Plate - Wear L.H.	4
†21		Cap - Bearing	4	41	80-3830	Bolt - Shoulder	4
22	66-4040	Assembly - Crank, Short	2	45	3290-224	Washer - Pyramidal	4
23	95-3106	Rod - Connecting	4	*	62-4740	Timing Rod	4
25	95-3107	Rubber Bushing Assembly	4				
26	32153-2	Nut-Lock	4				

*Not Illustrated

†Not Serviced Separately.

■ See pages 4 & 5 for selection.

3318-941



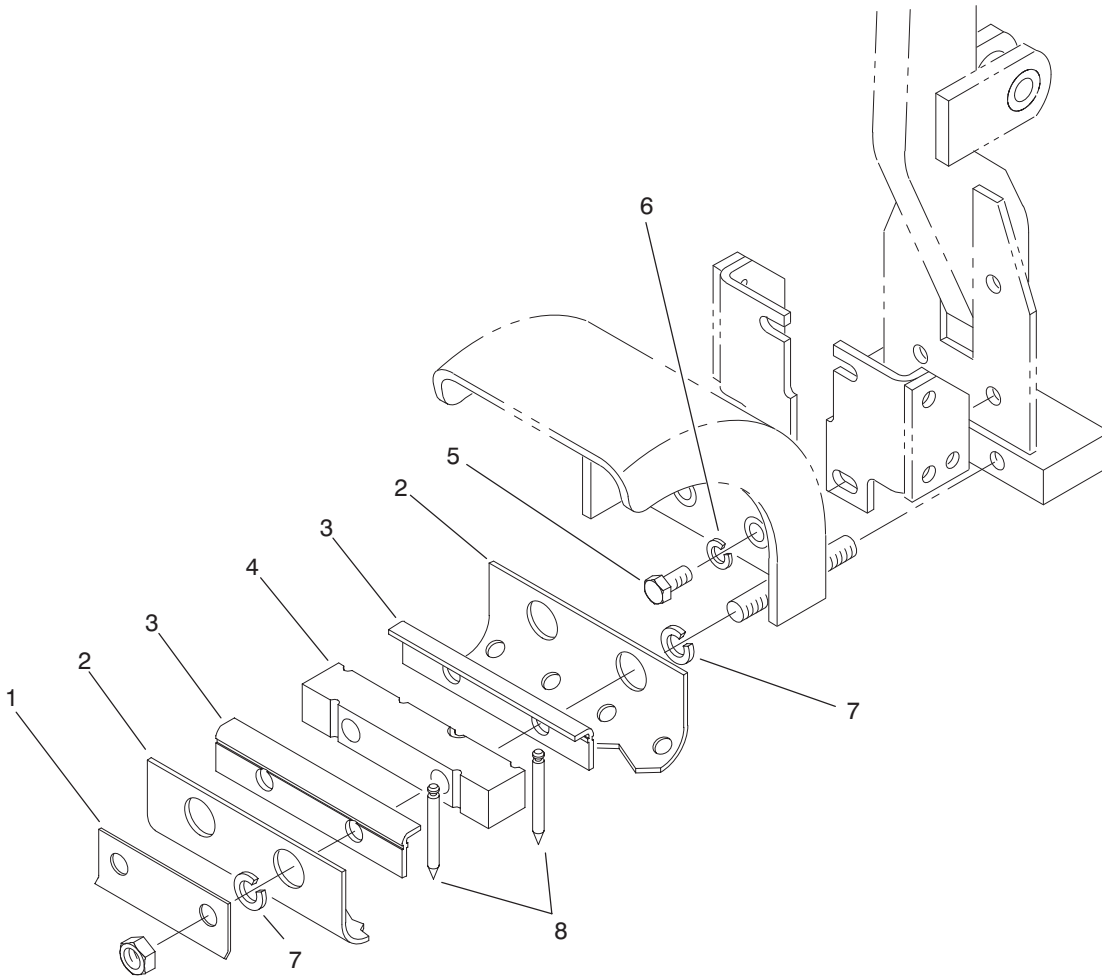
T-2506-1

TINE BLOCK & TINE SELECTION

Ref. No.	Part No.	Description	No. Used
1	59-2500	Block	8
2	77-5320	Tine - Spiker, 5/16" x 3 1/4"	12
3	59-9770	Tine - Coring, Long Wear 5/8" x 4 3/4"	12
4	59-3690	Tine - Coring, 3/8" x 4 3/4"	12
5	94-3419	Tine - Coring, 1/2" x 4 3/4"	12
6	59-3670	Tine - Coring, 5/8" x 4 3/4"	12
7	62-4610	Block	8
8	62-4600	Tine - Coring, 3/4" x 4 3/4"	12

Ref. No.	Part No.	Description	No. Used
9	92-7941	Tine - Open Center, 3/4" x 4 3/4"	12
*	94-6823	Kit- 1/4" Open Center Tine (Opt.) (Incl. Ref. #10-12)	1
10	94-3421	Block - Outboard	8
11	94-3417	Tine - Open Center 1/4" x 4 1/4"	24
12	94-6822	Block - Inboard	4
*	94-6814	Kit - 3/8" Open Center Tine (Opt.) (Incl. Ref. #13-14)	1
13	94-3420	Block	8
14	94-3418	Tine - Open Center, 3/8" x 4 3/4"	12

*Not Illustrated

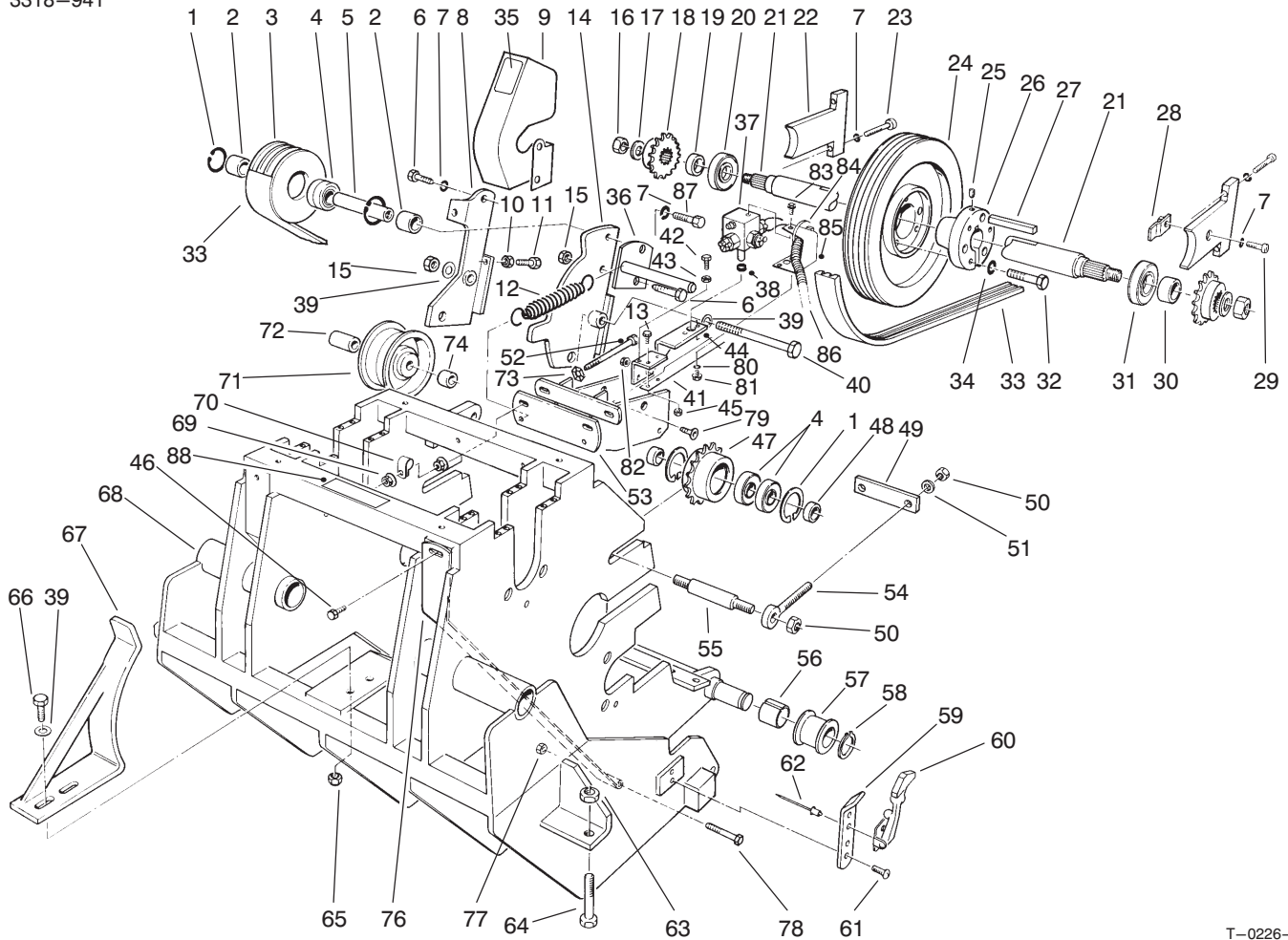


T-1944-1

KIT – SPIKER 1/4" MODEL NO. 09153 (Optional)

Ref. No.	Part No.	Description	No. Used
1	77-5360	Plate – Holder, Turf	4
2	77-5380	Guard – Turf	4
3	77-5350	Clamp – Holder, Tine	8
4	77-5370	Holder – Tine	4

Ref. No.	Part No.	Description	No. Used
5	323-4	Screw – HH	16
6	3253-21	Washer – Lock	16
7	3253-7	Washer – Lock	16
8	77-5340	Tine – Spiker, 1/4" x 2 1/2"	28



T-0226-2

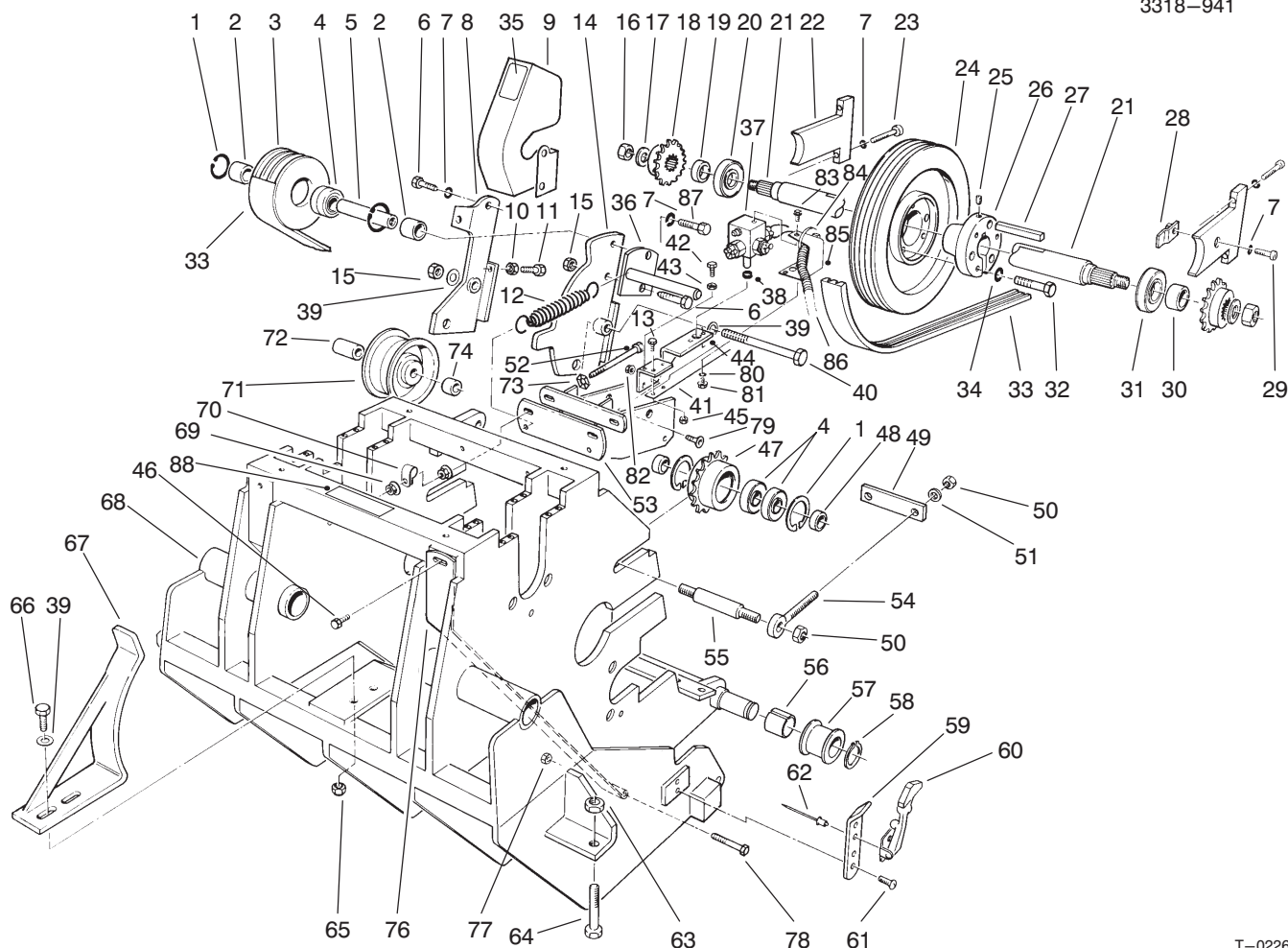
CORING HEAD DRIVE ASSEMBLY

Ref. No.	Part No.	Description	No. Used
1	32120-11	Ring - Retaining	6
2	66-4380	Spacer	2
3	66-3470	Pulley - Idler	1
4	251-297	Bearing	6
5	66-3480	Shaft - Idler	1
6	323-6	Screw - HH	2
7	3253-21	Washer - Lock	9
8	95-3126	Bracket - Idler L.H.	1
9	94-1751	Guard - Pulley	1
10	3218-2	Nut - Jam	2
11	3242-9	Screw - Sq. Hd.	2
12	66-4270	Spring - Extension	2
13	3290-359	Screw - Machine, Hex. Hd.	2
14	95-3125	Bracket - Idler R.H.	1
15	32153-2	Nut - Lock	2
16	3296-67	Nut - Lock	2
17	3256-44	Washer - Flat	2
18	66-3790	Sprocket	2
19	66-4690	Spacer	1
20	251-312	Bearing	1
21	66-3840	Shaft - Power	1
†22		Cap - Bearing	2
23	3274-50	Screw - HSH	4
24	59-2130	Pulley	1
25	3245-2	Screw - Set	1
26	59-3790	Bushing Assembly (Incl. Ref. #25, 32 & 34)	1

Ref. No.	Part No.	Description	No. Used
27	59-4210	Key	1
28	59-2710	Clip - Retaining	3
29	3274-7	Screw - HSH	3
30	66-4680	Spacer	1
31	251-313	Bearing	1
32	322-7	Screw - HH	3
33	66-4070	V-Belt	1
34	3253-4	Washer - Lock	3
35	94-9111	Decal - Warning	1
36	94-6808	Handle	1
‡37		Assembly - Switch	1
38	253-166	Seal	1
39	3256-24	Washer - Flat	4
40	323-25	Screw - HH	1
41	66-4480	Actuator - Switch	1
42	3290-360	Screw - Hex. Head	1
43	3217-26	Nut - Jam	1
44	80-3820	Bracket - Switch	1
45	3296-12	Nut - Lock	2
46	46-8560	Screw - Thread Forming	2
47	59-2390	Sprocket	2
48	59-2600	Bushing	4
49	59-2070	Bar - Keeper	2
50	3296-23	Nut - Lock	8
51	3256-26	Washer - Flat	4
52	323-20	Screw - HH	2
53	95-3124	Bracket - Idler Pulley Pivot	1

† Not Serviced Separately.

‡ See following page for individual parts.

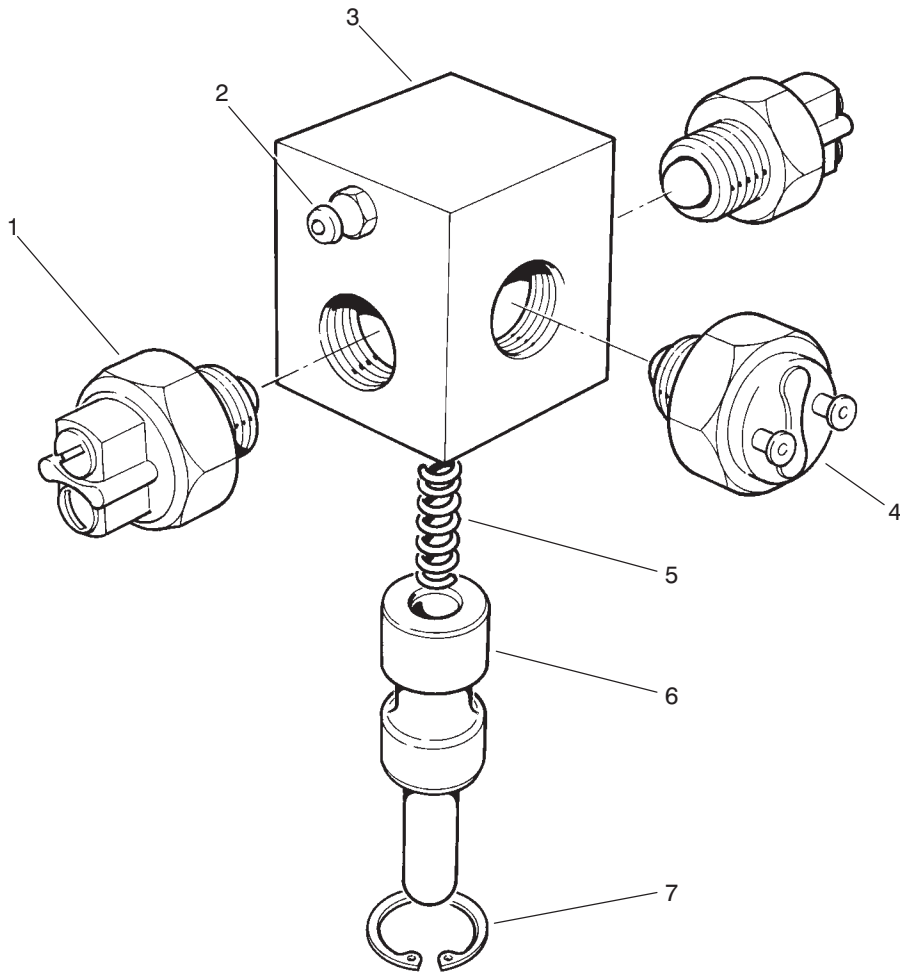


T-0226-2

CORING HEAD DRIVE ASSEMBLY (Continued)

Ref. No.	Part No.	Description	No. Used	Ref. No.	Part No.	Description	No. Used
54	59-2620	Eye Bolt	4	74	59-2570	Spacer - Short	1
55	59-2610	Shaft	2	76	76-2370	Guard - Chain	2
56	256-319	Bushing - Split	2	77	3296-42	Nut - Lock	2
57	84-8480	Sleeve	2	78	321-33	Screw - HH	2
58	32151-77	Ring - Retaining	2	79	3289-4	Screw - HSFH	2
59	59-9640	Plate - Handle	2	80	3253-12	Washer - Lock	2
60	59-9750	Assembly - Latch	2	81	32105-8	Screw - SHH	2
61	32140-29	Screw - Washer Hd.	4	82	32128-33	Nut - Flange	2
62	3269-4	Rivet - Pop	4	83	32144-73	Screw - Hex. Washer Head Thread Forming	1
63	3218-5	Nut - Jam	2	84	3290-378	Tie - Cable	1
64	60-9870	Screw - Adjustment	2	85	80-3930	Guard - Switch	1
65	3296-59	Nut - Lock	2	86	94-9108	Wiring Harness - Coring Head Switch	1
66	323-4	Screw - HH	2	87	323-7	Screw - HH	1
67	66-3810	Guide - Belt	1	88	67-5360	Decal - Danger	1
68	72-9100	Frame	1	*		Coring Head Stand Model No. 09152 (Optional)	1
69	32128-19	Nut - Hex. Flange	3				
70	94-6821	Clamp - Wire	1				
71	37-5760	Pulley - Idler	1				
72	59-2580	Spacer - Long	1				
73	3290-224	Washer - Lock, Pyramidal	2				

*Not Illustrated

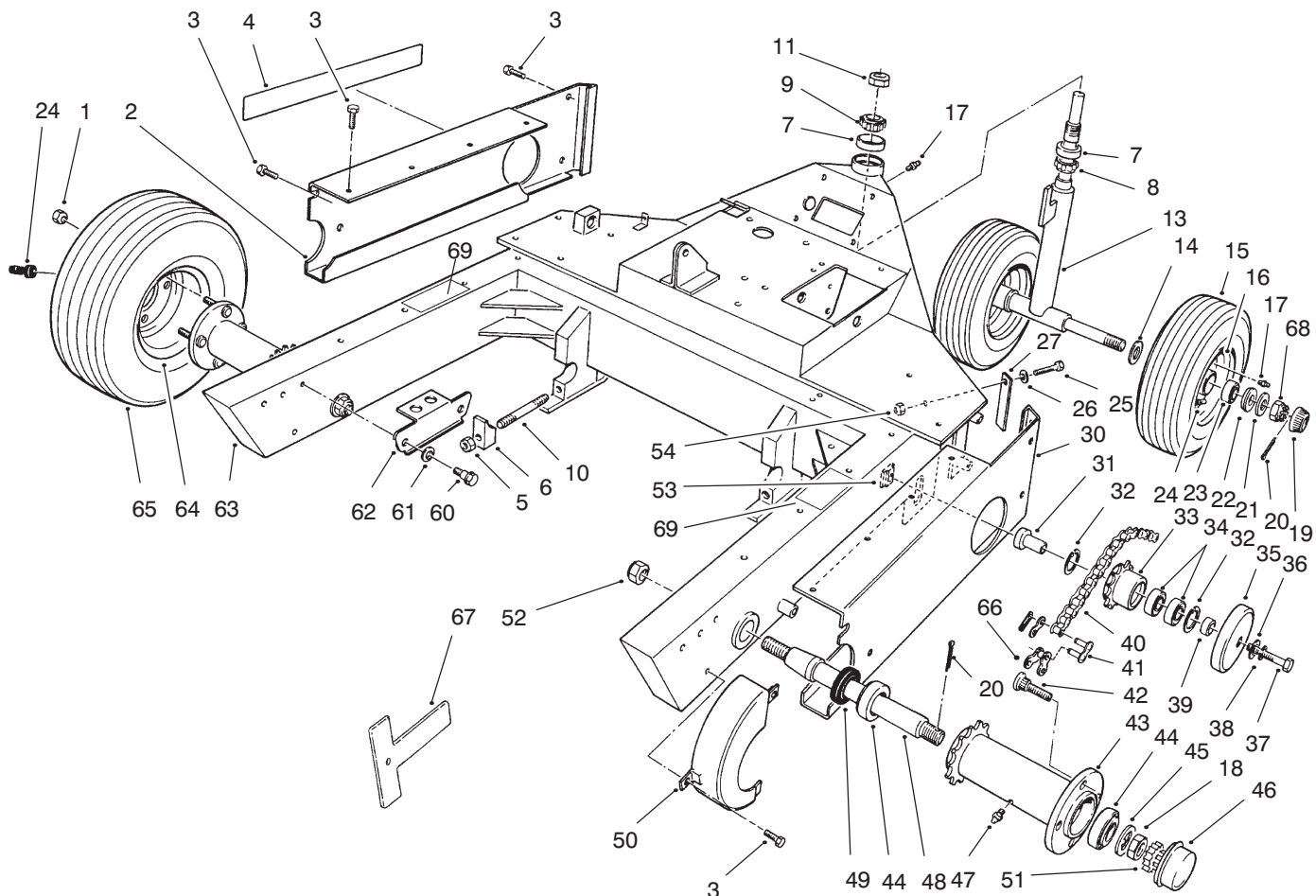


T-1173-1

SWITCH ASSEMBLY – CORING HEAD

Ref. No.	Part No.	Description	No. Used
1	19-2530	Switch – Start. Safety N.O.	2
2	302-22	Fitting – Grease	1
3	80-2830	Housing Switch	1
4	28-4250	Switch – Neutral N. C.	1

Ref. No.	Part No.	Description	No. Used
5	10-4850	Spring – Compression	1
6	80-2840	Plunger – Switch	1
7	32151-54	Ring – Retaining	1



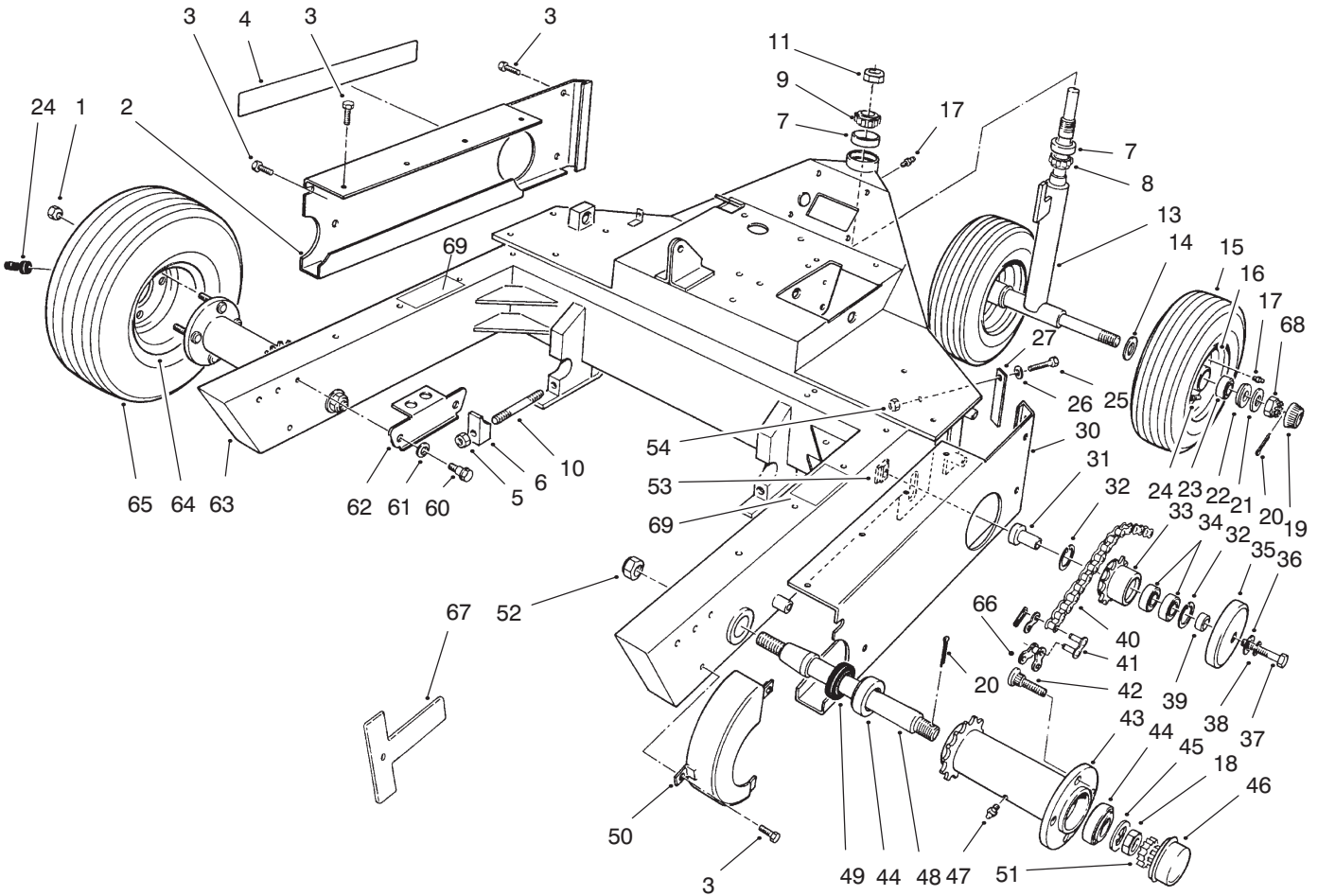
T-0227-3

CHASSIS ASSEMBLY

Ref. No.	Part No.	Description	No. Used
1	242-50	Nut - Lug	8
2	66-9070	Guard - Chassis L.H.	1
3	46-8560	Screw- Cap Hex. Hd.	17
4	59-4440	Decal - Greens Aerator	2
5	3296-45	Nut - Lock	2
6	82-8020	Clamp	2
7	254-61	Cup - Bearing	2
8	254-70	Cone - Bearing	1
9	254-62	Cone - Bearing	1
10	61-9160	Stud	2
11	3296-68	Nut - Lock	1
13	80-2710	Assembly - Front Axle	1
14	22-6090	Washer - Thrust	2
15	231-126	Tire	2
16	241-123	Wheel	2
17	302-5	Fitting - Grease	3
18	3220-7	Nut - Jam	2
19	61-9780	Cap-Hub	2
20	3272-13	Pin - Cotter	4
21	28-2480	Washer	2
22	59-9650	Retainer - Bearing	4
23	252-105	Bearing - Roller	4
24	232-35	Stem - Valve w/Cap	4
25	321-4	Screw - HH	2
26	3256-22	Washer - Flat	2
27	59-9460	Guide	2

Ref. No.	Part No.	Description	No. Used
30	94-6813	Guard - Chassis R.H.	1
31	59-2420	Bushing	2
32	32120-11	Ring - Retaining	4
33	59-2390	Sprocket - Idler	2
34	251-297	Bearing - Ball	2
35	59-9620	Cover - Idler	4
36	3256-26	Washer - Flat	2
37	325-13	Screw - HH	2
38	3253-7	Washer - Lock	2
39	59-9630	Spacer	2
40	95-3111	Chain - Roller	2
41	2710-16	Link - Connecting	2
42	10-6830	Stud - Drive	8
43	59-4040	Assembly - Hub (Incl. Ref. #42)	2
44	254-105	Bearing - Roller	4
45	93-0309	Washer - Tab	2
46	59-2380	Cap - Dust	2
47	302-10	Grease Fitting	2
48	93-0177	Shaft	2
49	253-158	Seal - Shaft	2
50	59-3280	Guard - Sprocket R.H.	1
*	59-3270	Guard - Sprocket L.H.	1
51	93-0307	Nut - Retainer	2
52	3296-15	Nut - Lock	2
53	59-2430	Nut - Special	2

*Not Illustrated

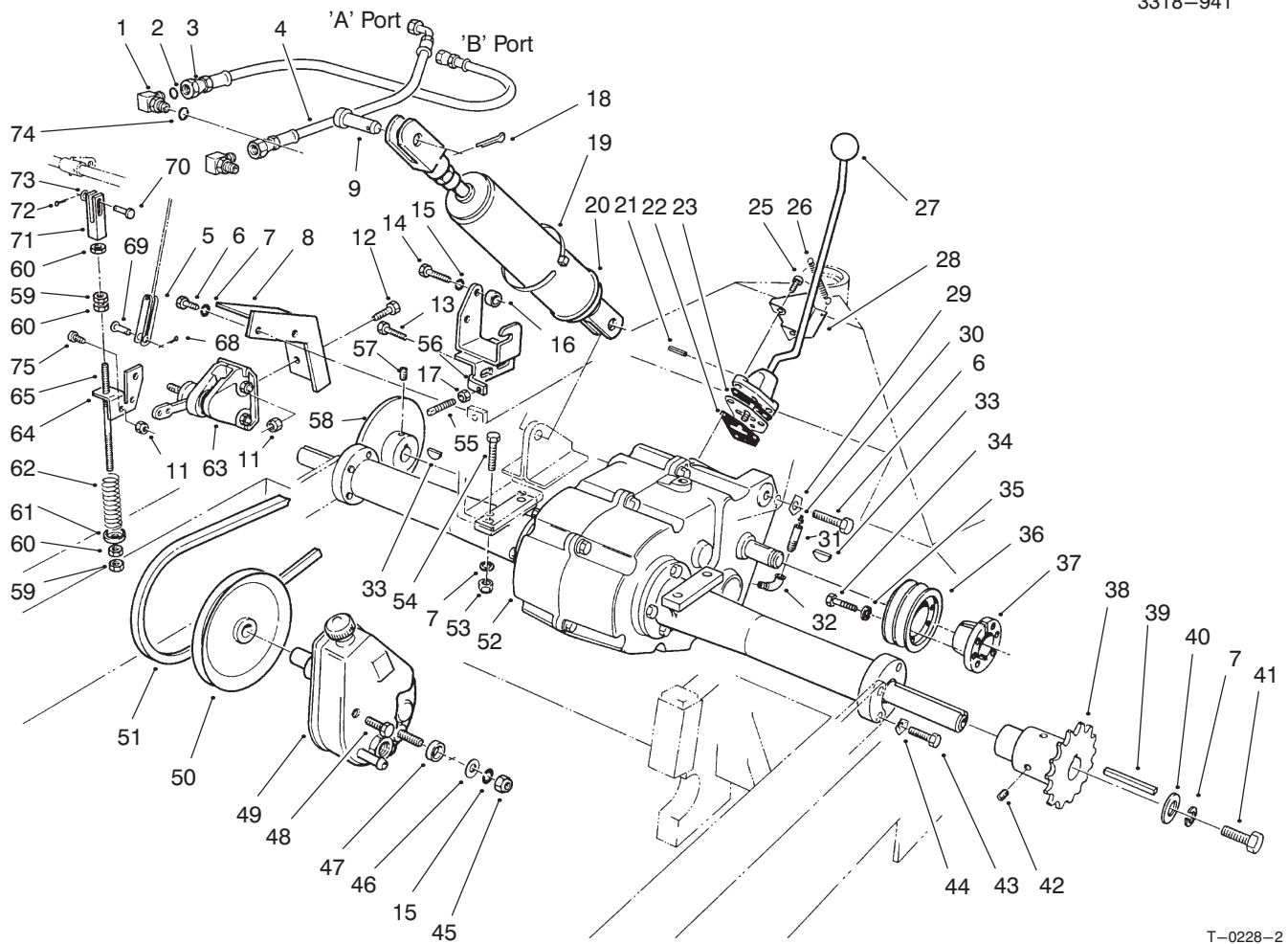


T-0227-3

CHASSIS ASSEMBLY (Continued)

Ref. No.	Part No.	Description	No. Used
54	3296-42	Nut - Lock	2
60	5-2490	Bolt - Shoulder	2
61	3-3287	Spacer	2
62	66-4530	Bracket - Lockup	2
63	94-3442	Frame	1
64	217-60	Wheel	2

Ref. No.	Part No.	Description	No. Used
65	231-119	Tire	2
66	2710-20	Link - Single Pitch	2
67	60-9930	Frame Gauge	1
68	32136-5	Nut - Hex. Slotted	2
69	67-5360	Decal - Danger	2

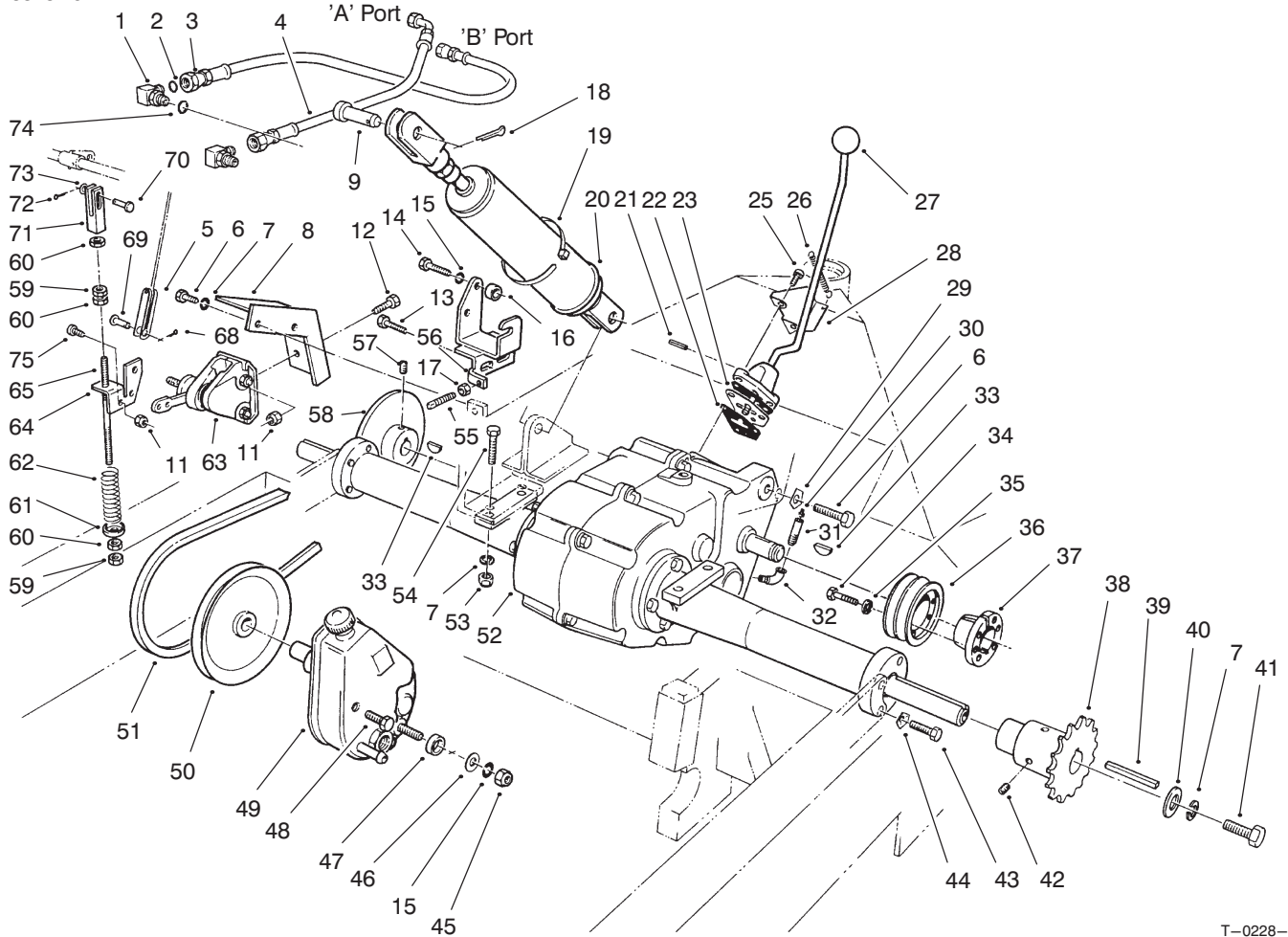


T-0228-2

TRANSAXLE, BRAKE & PUMP ASSEMBLY

Ref. No.	Part No.	Description	No. Used	Ref. No.	Part No.	Description	No. Used
1	340-82	Fitting (Incl. Ref. #2 & 74)	2	29	3290-224	Washer - Pyramidal	1
2	237-21	O-Ring	2	30	281-1	Plug - Oil	1
3	76-2300	Hose - Cylinder	1	31	68-3110	Tube-Oil	1
4	59-4160	Hose - Cylinder	1	32	2811-10	Elbow - Street	1
5	66-3930	Clevis	1	33	3257-5	Key	2
6	323-6	Screw - HH	3	34	321-13	Screw - HH	3
7	3253-21	Washer - Lock	8	35	3253-3	Washer - Lock	3
8	76-2620	Bracket	1	36	59-2140	Pulley	1
9	283-74	Pin - Clevis	2	37	59-2150	Bushing (Incl. Ref. #34 & 35)	1
11	3296-42	Nut - Lock	3	38	95-3109	Sprocket - 19 Tooth	2
12	321-4	Screw - HH	2	39	5-0786	Key	2
13	11-0590	Screw - Thread Forming Hex. Washer Hd.	2	40	3-4685	Washer - Thrust	2
14	48-9470	Screw - Cap Hex Hd.	2	41	323-5	Screw - HH	2
15	3253-6	Washer - Lock	3	42	3247-2	Screw - Set	4
16	59-4320	Spacer	2	43	322-5	Screw - HH	4
17	3218-3	Nut - Jam	1	44	3290-238	Washer - Pyramidal	4
18	3272-12	Pin - Cotter	2	45	21-0360	Hex Nut (Metric)	1
19	3290-379	Tie - Cable	1	46	3256-25	Washer - Flat	1
20	62-4660	Assembly - Cylinder	1	47	59-4310	Spacer	1
21	32121-20	Pin - Roll	1	48	60-9920	Screw (Metric)	1
22	27-6390	Gasket	2	49	44-7800	Pump - Steering	1
23	66-3290	Plate - Guide Shift	1	50	38-1830	Pulley	1
25	3274-26	Screw - Socket Hd.	3	51	59-4200	V-Belt	1
26	66-4460	Spring	1	52	66-4590	Transaxle	1
27	233-13	Knob	1	53	3217-7	Nut	4
28	66-3920	Bracket - Spring	1	54	323-10	Screw - HH	4
				55	3243-9	Screw - Set, Sq. Hd.	1

3318-941

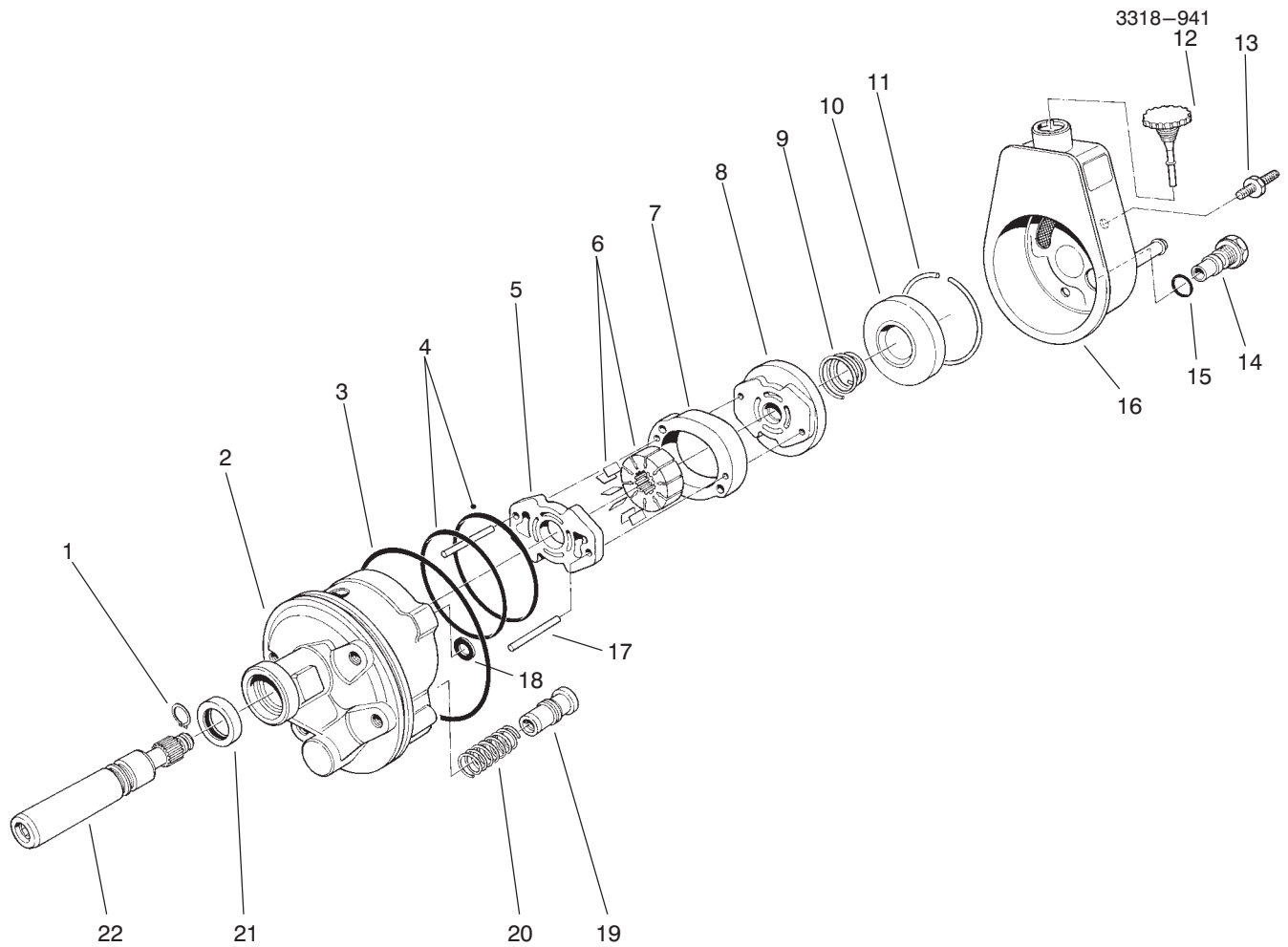


T-0228-2

TRANSAXLE, BRAKE & PUMP ASSEMBLY (Continued)

Ref. No.	Part No.	Description	No. Used
56	72-4860	Bracket - Pump Support	1
57	3245-33	Screw - Set	2
58	59-4100	Brake - Disc	1
59	3220-1	Nut - Jam	2
60	3219-1	Nut - Hex.	3
61	66-3390	Retainer - Brake Spring	1
62	66-4150	Spring	1
63	76-2590	Brake - Caliper	1
64	80-3890	Arm - Brake	1

Ref. No.	Part No.	Description	No. Used
65	66-3400	Rod - Brake Take-up	1
68	3272-10	Pin - Cotter	1
69	283-2	Pin - Clevis	1
70	283-67	Pin - Clevis	1
71	66-4600	Clevis - Brake	1
72	3272-4	Pin - Cotter	1
73	3256-22	Washer - Flat	1
74	237-42	O-Ring	2
75	321-5	Screw - HH	2



T-0230-2

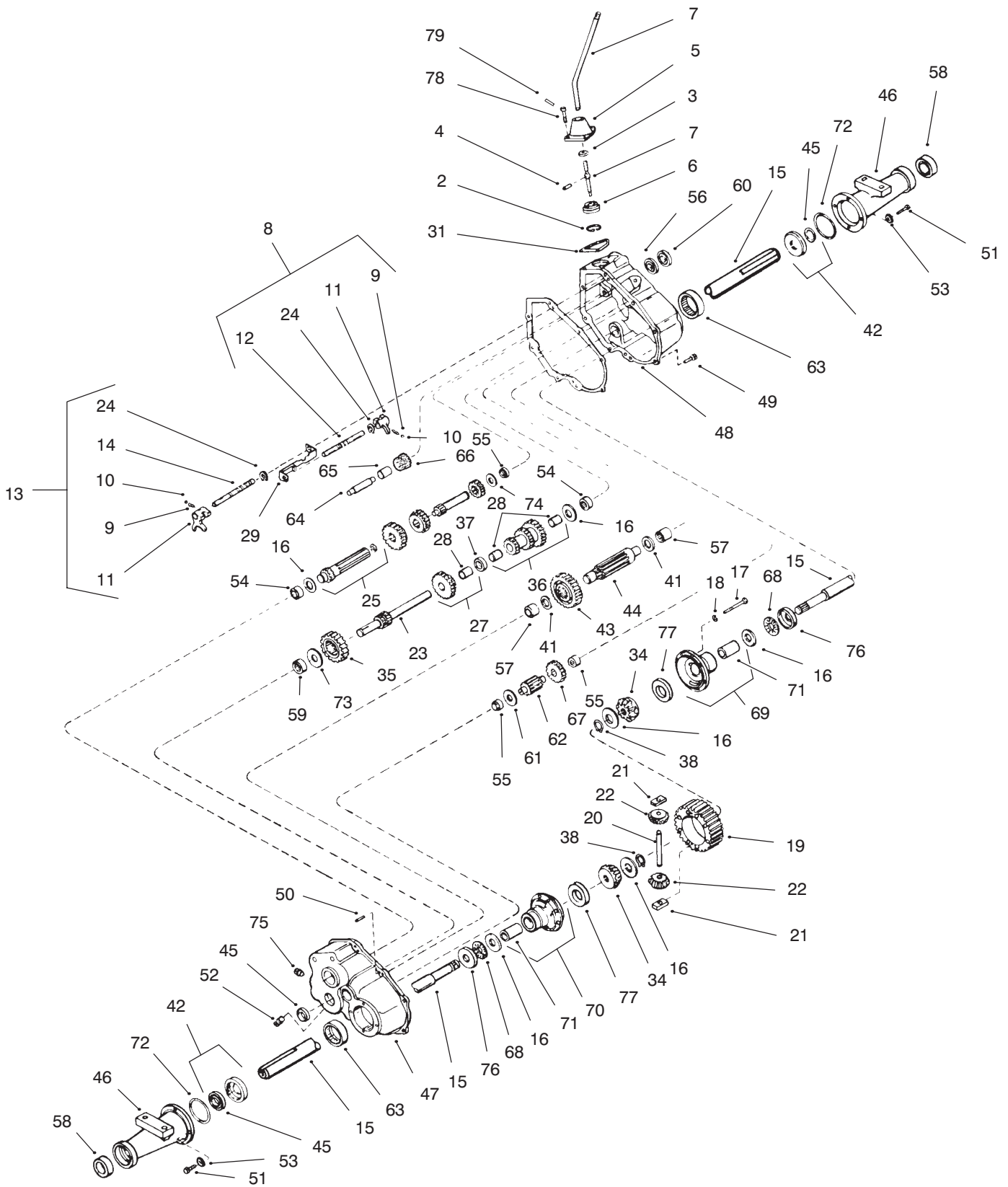
PUMP ASSEMBLY NO. 44-7800

Ref. No.	Part No.	Description	No. Used	Ref. No.	Part No.	Description	No. Used
1	44-7850	Ring – Shaft Retaining	1	15	39-8710	Seal – O–Ring	1
†2		Housing – Hydraulic Pump (Incl. Ref. #21)	1	16	37-8400	Pump Reservoir Service Kit (Incl. Ref. #3 & 18)	1
3	37-8360	Seal – O–Ring	1	17	37-8300	Pin – Pump, Ring Dowel	2
4		Seal – O–Ring	2	18		Seal	2
5	44-7840	Thrust Plate	1	19	37-8410	Assembly – Valve, Control	1
6	44-7810	Ring Service Kit Rotor Vane (Incl. Ref. #1 & 7)	1	20	37-8450	Spring – Flow Control	1
†7		Pump Ring	1	21	37-8340	Seal – Drive Shaft	1
8	44-7830	Pressure Plate	1	22	44-2680	Shaft – Service Retaining Ring & Drive Kit (Incl. Ref. #1)	1
9	44-7820	Spring Pressure Plate	1	*	37-8460	Seal Service Kit (Incl. Ref. #3, 4, 15, 18 & 21)	1
10	37-8380	End Plate	1	*	44-7860	Retaining Ring Service Kit (Incl. Ref. #1)	1
11	37-8440	Ring – Retaining	1				
12	37-8420	Asm. – Cap, Reservoir	1				
13	39-8700	Stud Pump Mounting	2				
14	39-8680	Assembly – Fitting (Incl. Ref. #15)	1				

*Not Illustrated

†Not Serviced Separately

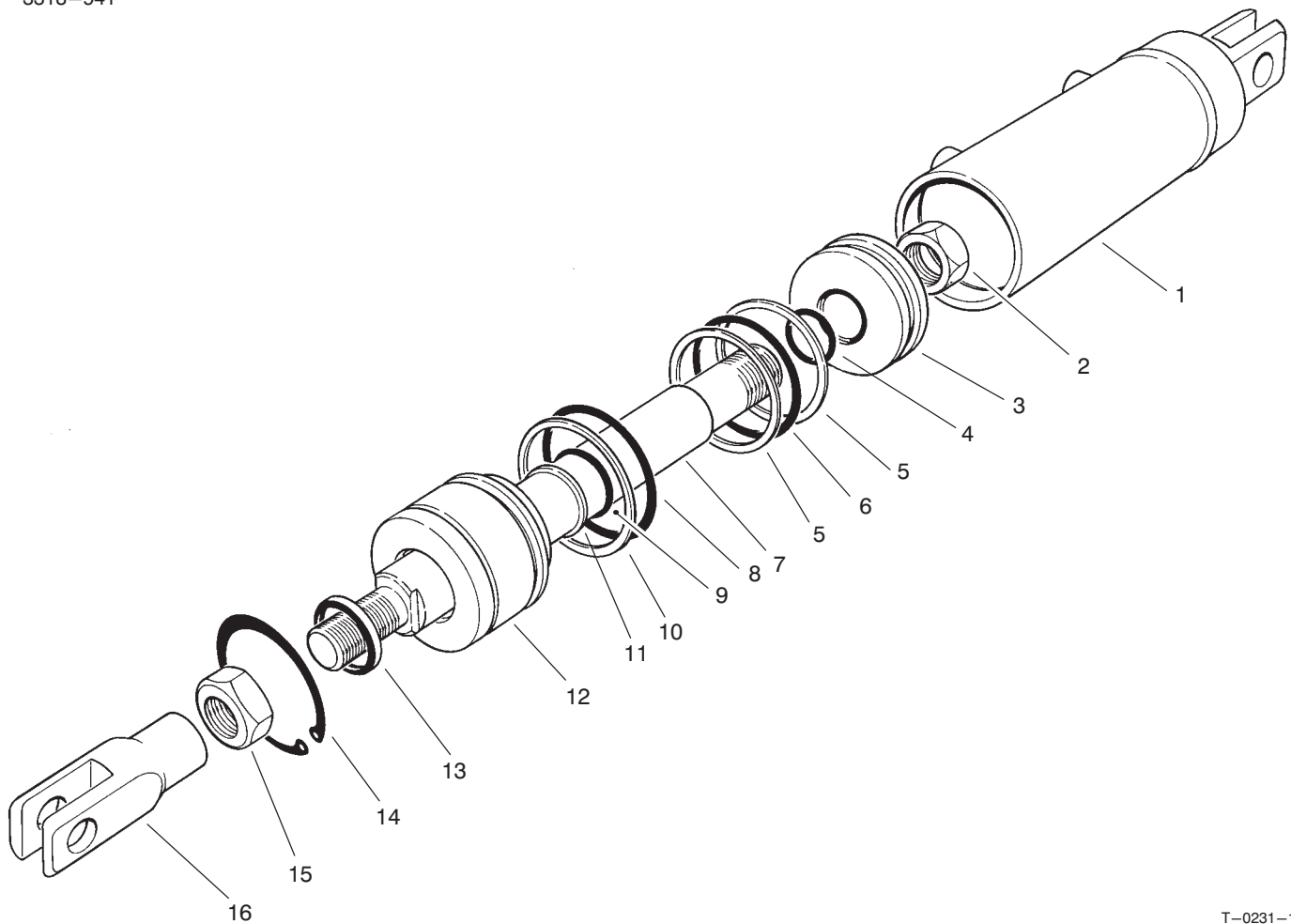
TRANSAXLE ASSEMBLY MODEL NO. 2361A



TRANSAXLE ASSEMBLY MODEL NO. 2361A (Continued)

Ref. No.	Part No.	Description	No. Used	Ref. No.	Part No.	Description	No. Used
2	32151-34	Ring – Snap	1	41	95-7230	Washer – Thrust	2
3	95-7203	Ring – Quad	1	42	95-7231	Seal & Retainer Asm. – Oil (Incl. Ref. #45)	2
4	95-7209	Pin – Roll	1	43	95-7232	Gear – Output	1
5	95-7200	Housing – Shift Lever	1	44	95-7233	Pinion – Output	1
6	66-9080	Keeper – Shift Lever	1	45	27-6420	Seal – Oil	3
7	80-3970	Lever – Shift	1	46	95-7234	Housing – Axle (10.906" long)	2
8	95-7201	Rod Asm. – Shift (Incl. Ref. #9-12 & 24)	1	†47		Cover Asm. – Transaxle (Incl. Ref. #54, 55, 57, 59 & 63)	1
9	95-7202	Spring	2	†48		Case Asm. – Transaxle (Incl. Ref. #54, 55, 57 & 63)	1
10	255-5	Ball – Steel	2	49	95-7235	Screw – Flanged Hex Hd.	11
11	95-7204	Fork – Shifter	2	50	95-7236	Pin – Dowel	2
12	95-7205	Rod – Shifter (3rd & 4th)	1	51	95-7237	Screw – Hex Hd.	8
13	95-7206	Rod Asm. – Shift (Incl. Ref. #9,10,11,14 & 24)	1	52	281-11	Plug – Magnetic Drain	1
14	95-7207	Rod – Shift (Low)	1	54	95-7238	Bearing – Needle	2
15	95-7208	Axle (17-7/8" Long)	2	55	95-7239	Bearing – Needle	3
16	252-80	Washer – Thrust	6	56	95-7240	Bearing – Ball	1
17	95-7210	Screw – Hex Hd.	8	57	95-7241	Bearing – Needle	2
18	3253-3	Lockwasher	8	58	95-7242	Bearing – Ball	2
19	95-7211	Gear – Ring	1	59	252-95	Bearing – Needle	1
20	95-7212	Pin – Drive	1	60	95-7243	Seal – Oil	1
21	95-7213	Block – Drive	2	61	95-7244	Washer	1
22	95-7214	Pinion – Bevel	2	62	95-7245	Shaft & Pinion	1
23	95-7215	Shaft & Gear – Brake	1	63	95-7246	Bearing – Needle	2
24	32151-84	Ring – Snap	2	64	95-7247	Shaft – Reverse Idler	1
25	95-7216	Pinion Shaft & Bearing (Incl. Ref. #26)	1	65	95-7248	Spacer – Reverse Idler	1
26	252-51	Bearing – Needle	1	66	95-7249	Idler – Reverse	1
27	95-7217	Gear Cluster Assembly (Incl. Ref. #28)	1	67	95-7250	Gear – Spur (22 Teeth)	1
28	95-7218	Bushing	3	68	252-76	Bearing – Thrust	2
29	95-7219	Stop – Shifter	1	69	95-7251	Carrier Asm. – Differential (Incl. Ref. #71)	1
30	95-7220	Gasket – Case & Cover	1	70	95-7252	Carrier Asm. – Differential (Incl. Ref. #71)	1
31	27-6390	Gasket – Lever Housing	2	71	95-7253	Bushing	2
32	95-7221	Gear – Shifting (3rd & 4th)	1	72	27-6380	O-Ring	2
33	95-7222	Gear – Shifting (1st, 2nd & Rev.)	1	73	95-7254	Washer – Thrust	1
34	95-7223	Gear – Bevel	2	74	95-7255	Washer – Thrust	1
35	95-7224	Gear – Idler	1	75	281-2	Plug – Pipe	1
36	95-7225	Gear Cluster Assembly (Incl. Ref. #28)	1	76	95-7256	Race – Thrust	2
37	95-7226	Spacer	1	77	95-7257	Washer	2
38	95-7227	Ring – Snap	2	78	3274-26	Screw – Socket Hd.	3
39	95-7228	Shaft – Input	1	79	32121-20	Pin – Roll	1
40	95-7229	Spur Gear – Input Shaft	1				

†Not Serviceable Separately.



T-0231-1

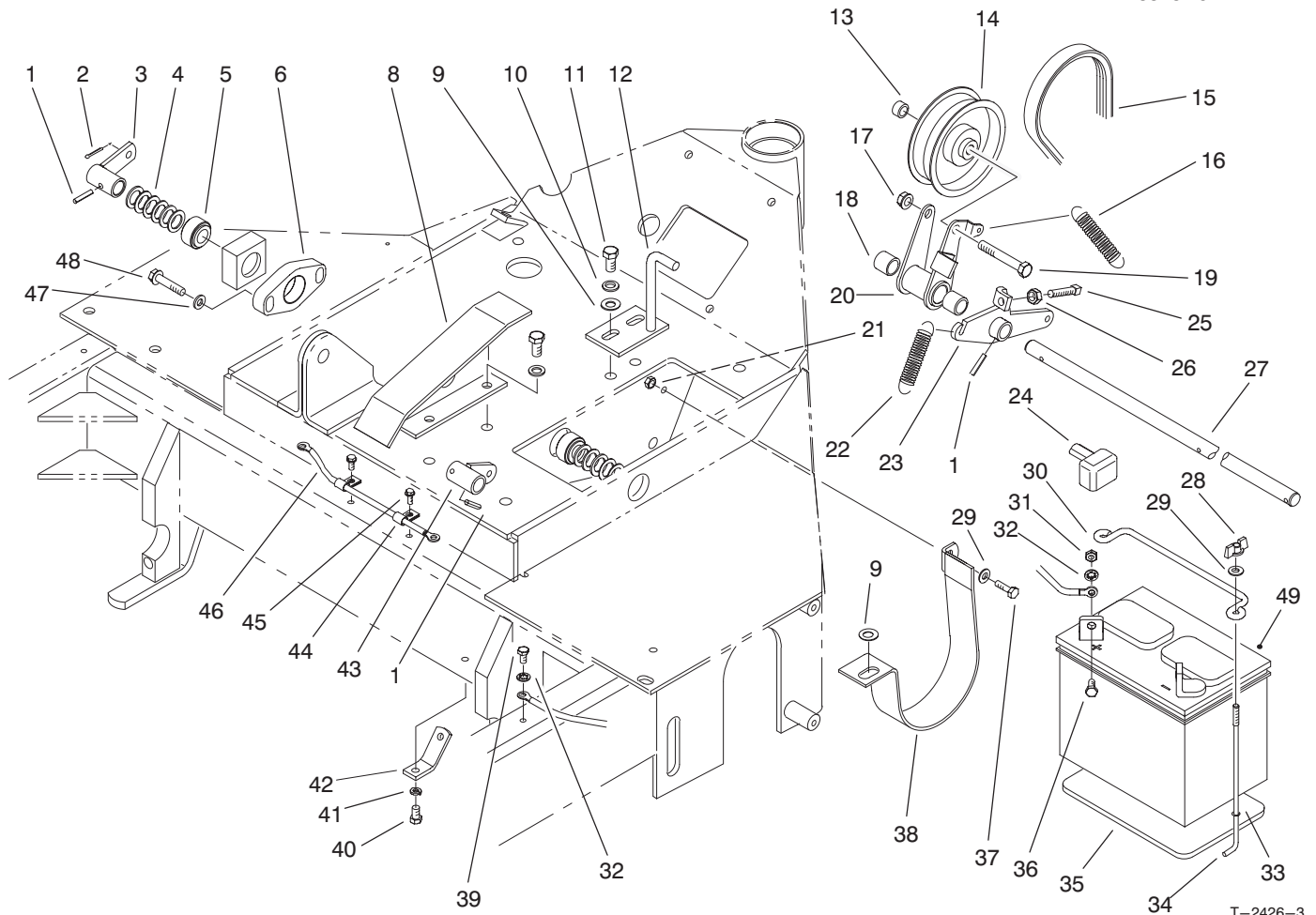
HYDRAULIC CYLINDER ASSEMBLY NO. 62-4660

Ref. No.	Part No.	Description	No. Used
†1		Assembly – Barrel	1
2	60-9760	Nut – Lock	1
3	62-4690	Piston	1
†4		O-Ring	1
†5		Ring – Back-Up	2
†6		O-Ring	1
7	62-4700	Rod	1
†8		O-Ring	1
†9		O-Ring	1
†10		Ring – Back-Up	1

Ref. No.	Part No.	Description	No. Used
†11		Ring – Back-Up	1
12	62-4680	Head	1
†13		Dust Seal	1
14	32120-65	Ring – Retaining	1
15	3220-7	Nut – Jam	1
16	62-4670	Clevis – Rod	1
*	62-4720	Seal Repair Kit (Inc. Ref. #4-6, 8-11, 13 & 14)	1

*Not Illustrated

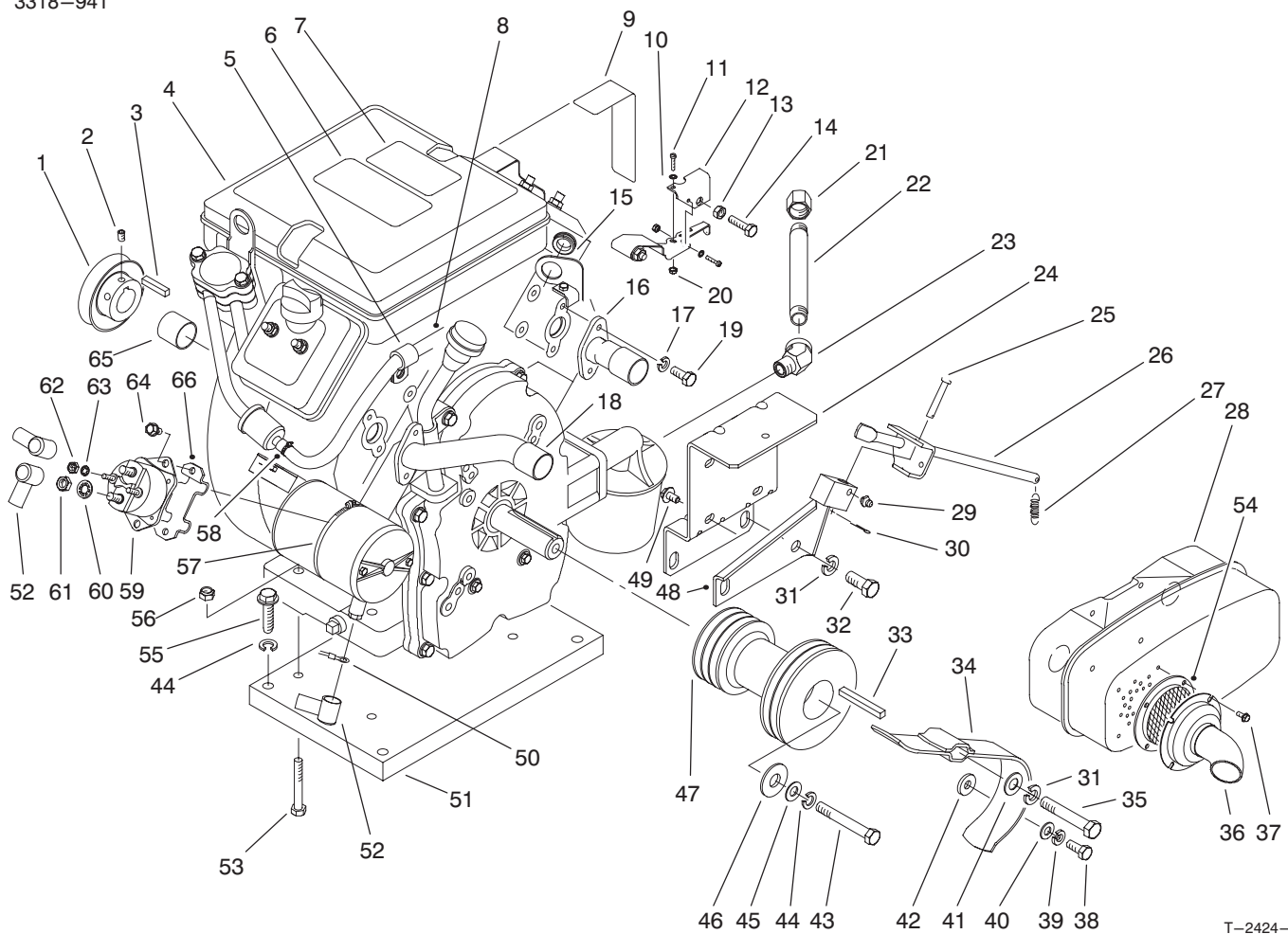
†Not Serviced Separately



T-2426-3

BATTERY & DRIVE TAKE-UP ASSEMBLY

Ref. No.	Part No.	Description	No. Used	Ref. No.	Part No.	Description	No. Used
1	32121-16	Pin - Roll	3	26	3218-2	Nut - Jam	1
2	3272-6	Pin - Cotter	1	27	66-3440	Cross Shaft - Clutch	1
3	72-8650	Arm - Cross Shaft	1	28	32103-12	Nut - Wing	2
4	3256-69	Washer - Flat	11	29	3256-22	Washer - Flat	3
5	66-4730	Bearing	3	30	94-5343	Clamp - Battery	1
6	66-4520	Housing - Bearing	1	31	3217-5	Nut - Hex.	2
8	66-4400	Guide - Belt	1	32	3254-8	Washer - Lock, Int. Tooth	3
9	3256-24	Washer - Flat	3	33	237-143	O-Ring	2
10	3253-21	Washer - Lock	1	34	7-3328	Bolt - Battery	2
11	323-4	Screw - HH	4	35	59-9470	Pad - Battery	1
12	66-3560	Guide - Belt	1	36	321-3	Screw - HH	2
13	59-4320	Spacer	1	37	321-5	Screw - HH	1
14	66-4210	Pulley - Idler	1	38	72-8920	Guide - Belt, Traction	1
15	66-4340	V-Belt	1	39	32104-17	Screw - HHST	1
16	5-7290	Spring	1	40	321-2	Screw - HH	1
17	3296-39	Nut - Lock	1	41	3253-3	Washer - Lock	1
18	256-216	Bushing	2	42	66-3420	Bracket - Spring Brake	1
19	323-12	Screw - HH	1	43	76-2610	Arm - Brake	1
20	66-3590	Bracket - Drive, Take-up (Incl. Ref. #18)	1	44	2412-131	Clamp-R	2
21	3296-42	Nut - Lock	1	45	32144-1	Screw - HHST	2
22	66-4180	Spring	1	46	94-5349	Asm. - Wire	1
23	66-3360	Arm - Brake Clutch	1	47	3256-2	Washer - Flat	2
24	28-8080	Boot - Battery	1	48	32144-57	Screw - HHST	2
25	3242-9	Screw - Set, Sq. Head	1	49	28-1400	Battery	1

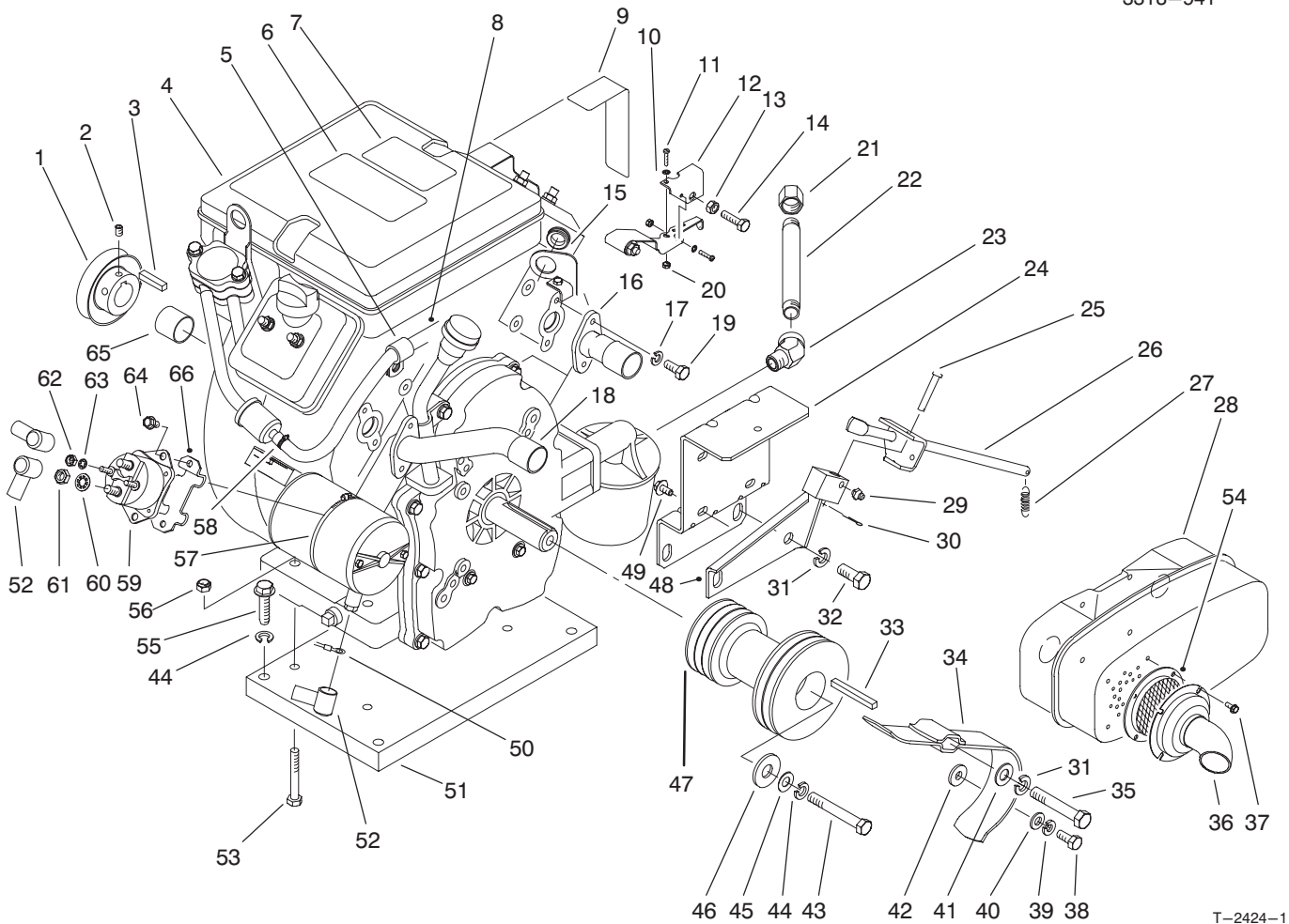


T-2424-1

ENGINE, PULLEY & MUFFLER ASSEMBLY

Ref. No.	Part No.	Description	No. Used
1	61-9150	Pulley	1
2	3245-2	Screw - Set	2
3	13-2840	Key	1
4		Engine - 16 HP, Briggs & Stratton Model No. 303447	1
5	94-6819	Clamp-R	1
6	66-9050	Decal - Shift	1
7	66-9110	Decal - Start	1
8	94-6809	Hose - Fuel	1
9	94-5310	Decal - Choke/Throttle	1
10	3254-9	Washer - Lock, Int. Tooth	2
11	3290-93	Screw - Pan Head	2
12	94-6810	Bracket - Adjuster, Throttle	1
13	3219-1	Nut - Hex.	1
14	329-6	Screw - HH	1
15	94-6817	Grommet	1
16	94-5314	Asm. - Exhaust Tube	1
17	42-9850	Washer - Lock	4
18	94-5313	Asm. - Exhaust Tube	1
19	66-3120	Screw - HH	4
20	94-9109	Nut - Hex. Keps	2
21	288-10	Cap - Pipe	1
22	94-6804	Nipple - Pipe	1
23	94-6820	Elbow - Street 45°	1
24	94-5315	Mount - Muffler	1
25	283-66	Pin - Clevis	1

Ref. No.	Part No.	Description	No. Used
26	94-6802	Rod - Control, Throttle	1
27	66-4160	Spring	1
28	94-3438	Muffler	1
29	302-5	Fitting - Grease	1
30	3272-1	Pin - Cotter	1
31	3253-6	Washer - Lock	2
32	324-4	Screw - HH	1
33	5-0930	Key	1
34	94-5316	Guide - Belt	1
35	324-10	Screw - HH	2
36	94-6803	Pipe - Exhaust	1
37	32144-107	Screw - HHST	4
38	3210-3	Screw - HH	1
39	3253-33	Washer - Lock	1
40	3256-23	Washer - Flat	1
41	3256-4	Washer - Flat	1
42	4-2390	Washer	1
43	3211-12	Screw - HH	1
44	3253-21	Washer - Lock	2
45	3256-24	Washer - Flat	1
46	3256-6	Washer - Flat	1
47	94-3432	Pulley - Engine	1
48	94-5341	Support - Muffler	1
49	46-8560	Screw - HHST	4
50	94-6800	Asm. - Wire	1
51	94-3437	Plate - Mount, Engine	1



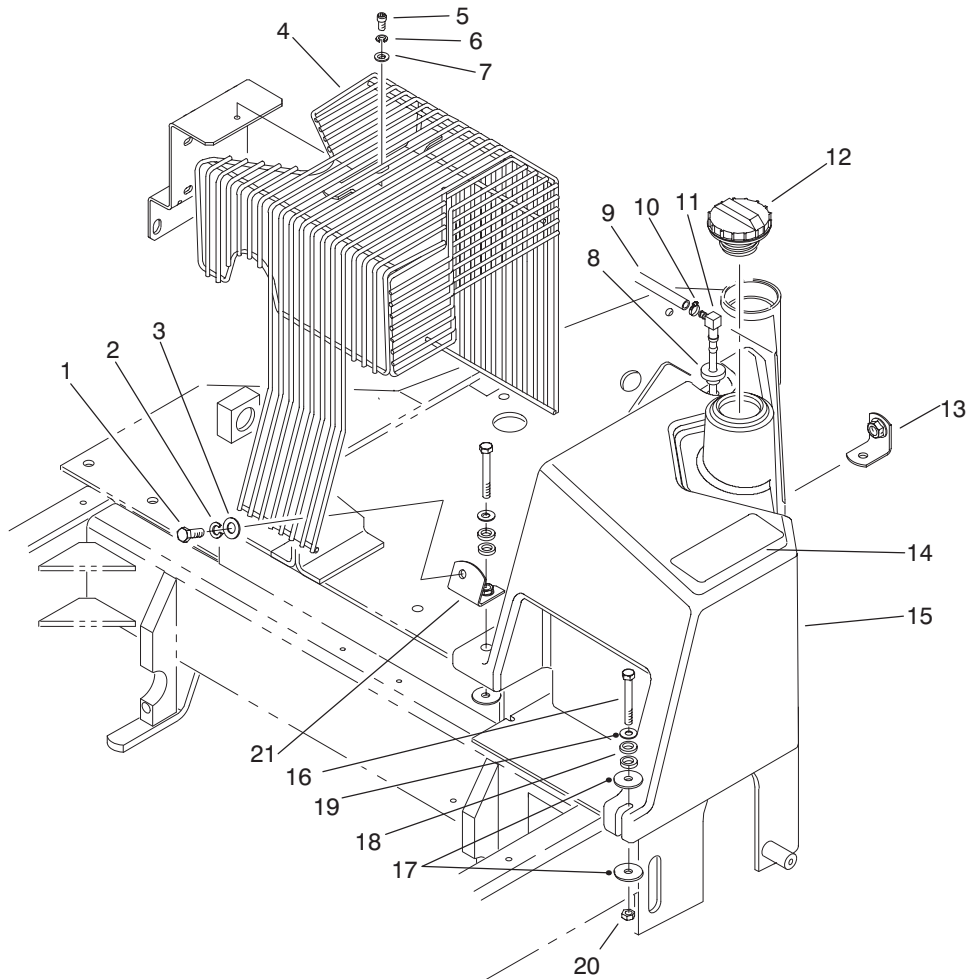
T-2424-1

ENGINE, PULLEY & MUFFLER ASSEMBLY (Continued)

Ref. No.	Part No.	Description	No. Used
52	94-6824	Boot - Terminal	3
53	322-11	Screw - HH	4
54	94-5301	Spark Arrester (Optional)	1
55	11-0590	Screw - HH	4
56	3296-29	Nut - Lock	4
57	2412-110	Clamp	1
58	2412-108	Clamp - Hose	1

Ref. No.	Part No.	Description	No. Used
59	28-4210	Solenoid	1
60	3254-2	Washer - Lock	2
61	3218-13	Nut - Jam	2
62	3219-14	Nut - Hex.	2
63	3254-1	Washer - Lock	2
64	32144-4	Screw - HHST	2
65	94-6812	Shield	1
†66	222934	Bracket - Solenoid	1

† Obtain from Briggs & Stratton

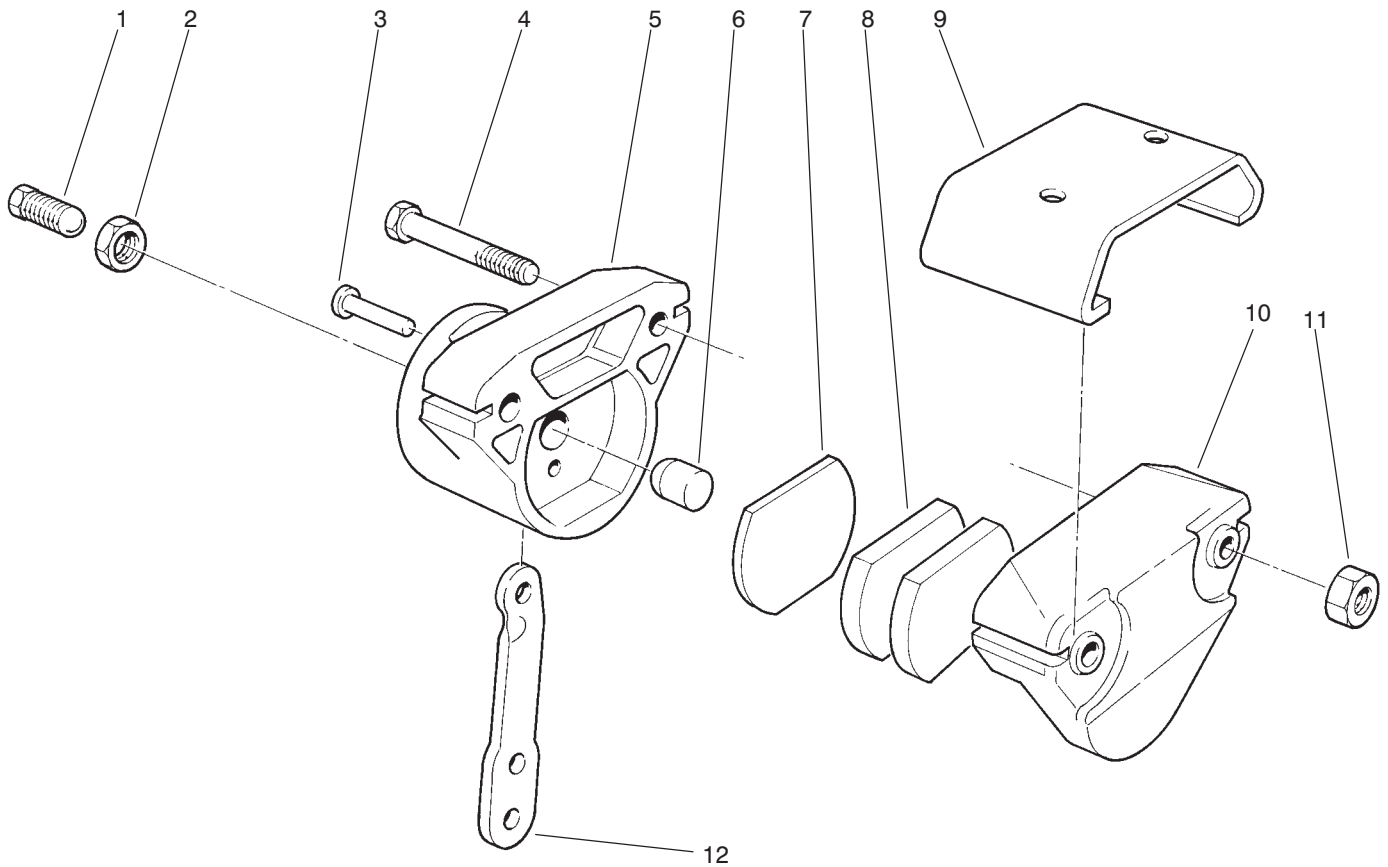


T-2425-2

MUFFLER GUARD & FUEL TANK ASSEMBLY

Ref. No.	Part No.	Description	No. Used
1	323-6	Screw - HH	2
2	3253-21	Washer - Lock	2
3	3256-4	Washer - Flat	2
4	94-5321	Guard - Muffler	1
5	3274-84	Screw - HSH	1
6	3253-3	Washer - Lock	1
7	3256-22	Washer - Flat	1
8	46-6560	Bushing	1
9	94-6809	Hose - Fuel	1
10	2412-108	Clamp - Hose	1
11	94-6805	Asm. - Stand Pipe, Fuel	1

Ref. No.	Part No.	Description	No. Used
12	93-3101	Cap - Fuel	1
13	94-6815	Bracket - Front	1
14	27-7310	Decal - Refueling	1
15	94-3435	Tank - Fuel	1
16	322-12	Screw - HH	3
17	3256-57	Washer - Flat	4
18	3-3287	Spacer	6
19	3256-2	Washer - Flat	3
20	3296-29	Nut - Lock	3
21	94-6816	Bracket - Rear	1



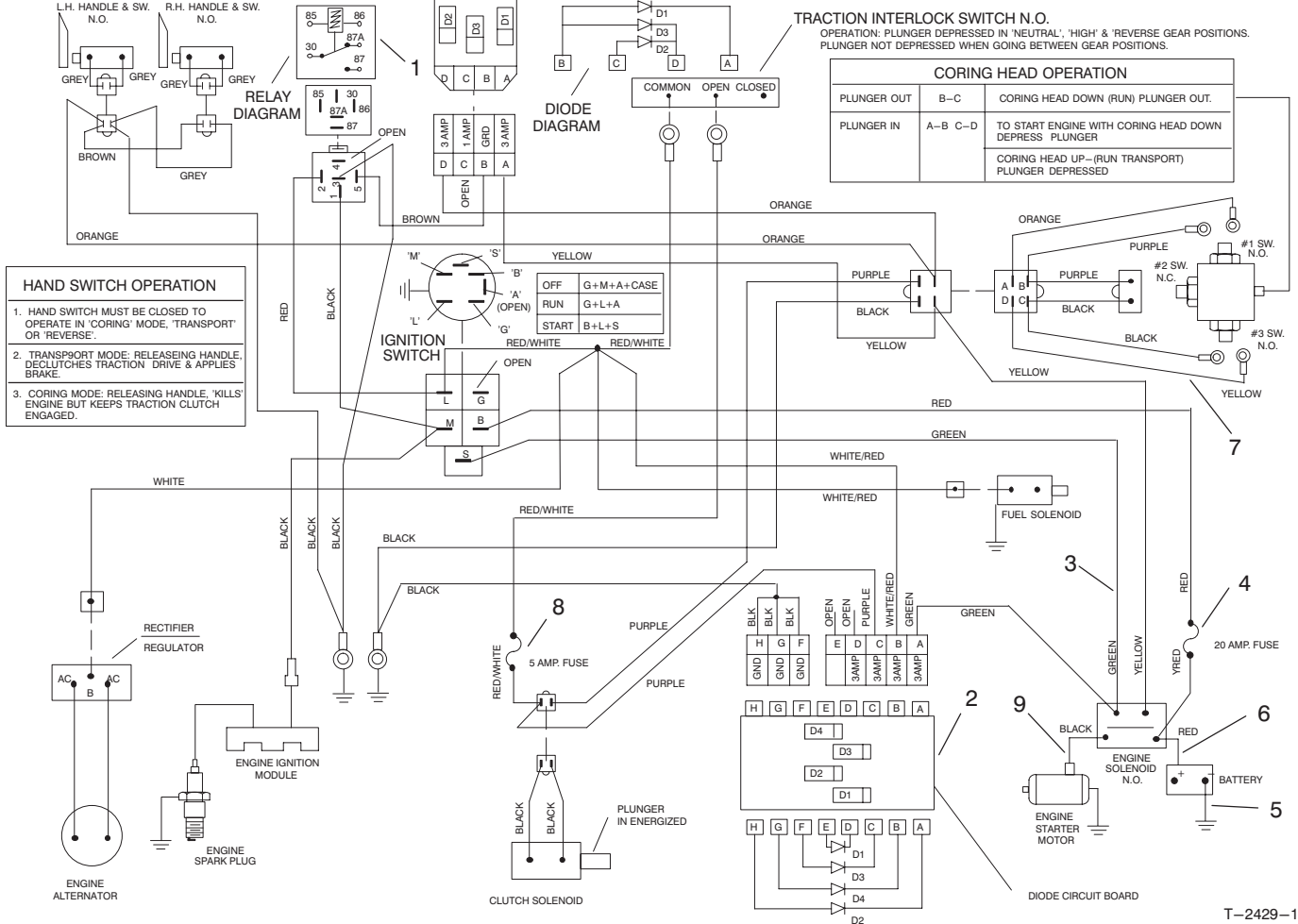
T-1243-1

BRAKE CALIPER ASSEMBLY NO. 76-2590

Ref. No.	Part No.	Description	No. Used	Ref. No.	Part No.	Description	No. Used
1	95-1842	Pin - Adjustment	1	10	80-0280	Anvil Sub Asm. (Incl. 1 of Ref. #8)	1
2	3220-4	Nut - Jam	1	11	32153-11	Nut - Lock	2
3	95-1837	Pin - Groove	1	12	80-0180	Lever - Cam	1
4	3211-10	Screw - HH	2	*	80-0290	Kit - Repair, Lining (Incl. Ref. #7 & 8)	1
5	95-1844	Housing - Live Side	1	*	80-0310	Kit - Service (Incl. Ref. #3, 5, & 12)	1
6	95-1843	Pin - Actuator	1				
7	95-1845	Plate - Backing	1				
8	80-0270	Lining	2				
9	95-1841	Bracket - Floating	1				

*Not Illustrated

3318-941

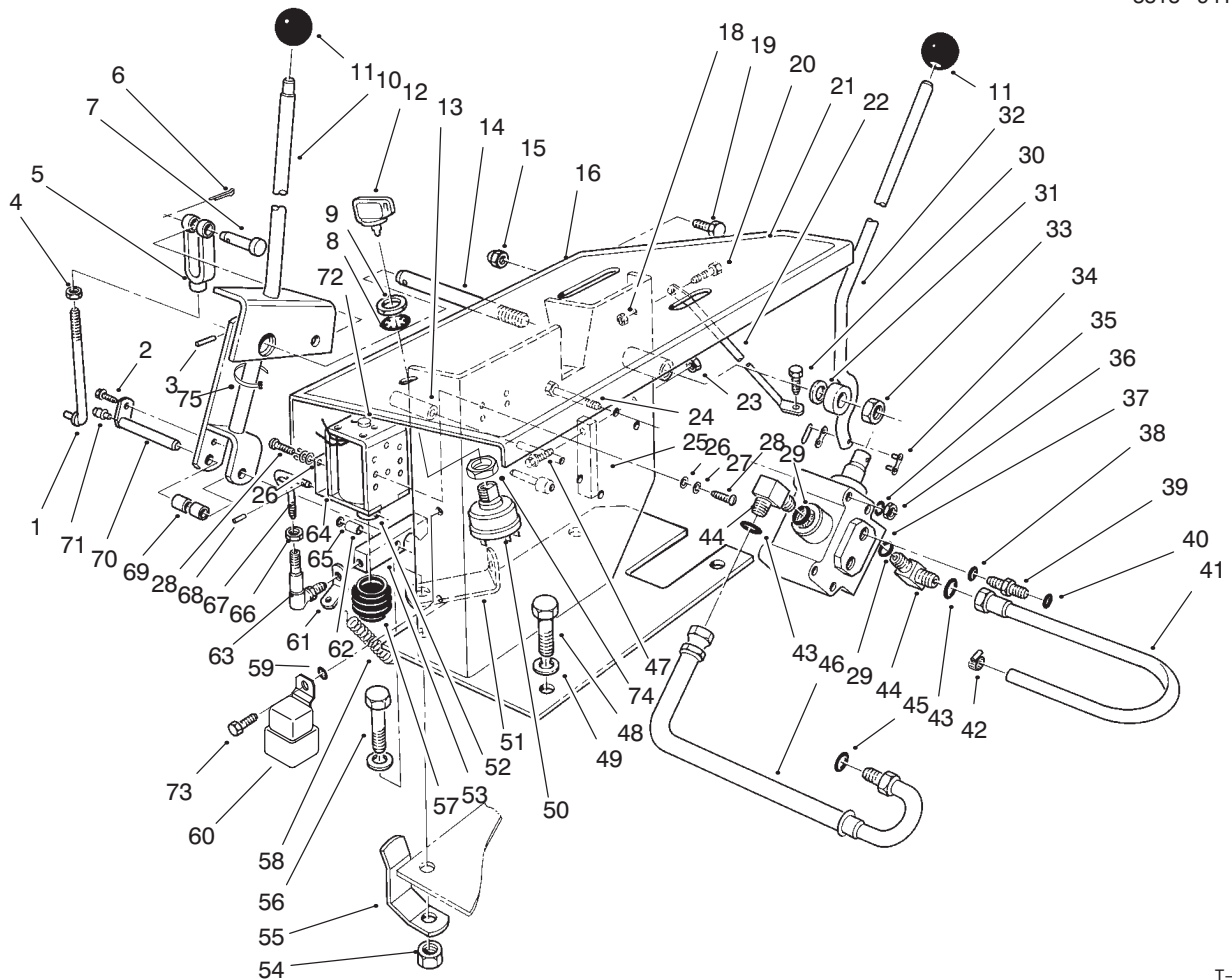


T-2429-1

ELECTRICAL SCHEMATIC

Ref. No.	Part No.	Description	No. Used
1	92-3191	Diode	1
2	92-3188	Diode	1
3	94-3433	Wire Harness - Main	1
†4		Fuse - 20 Amp	1
5	28-3860	Battery Cable - Ground	1

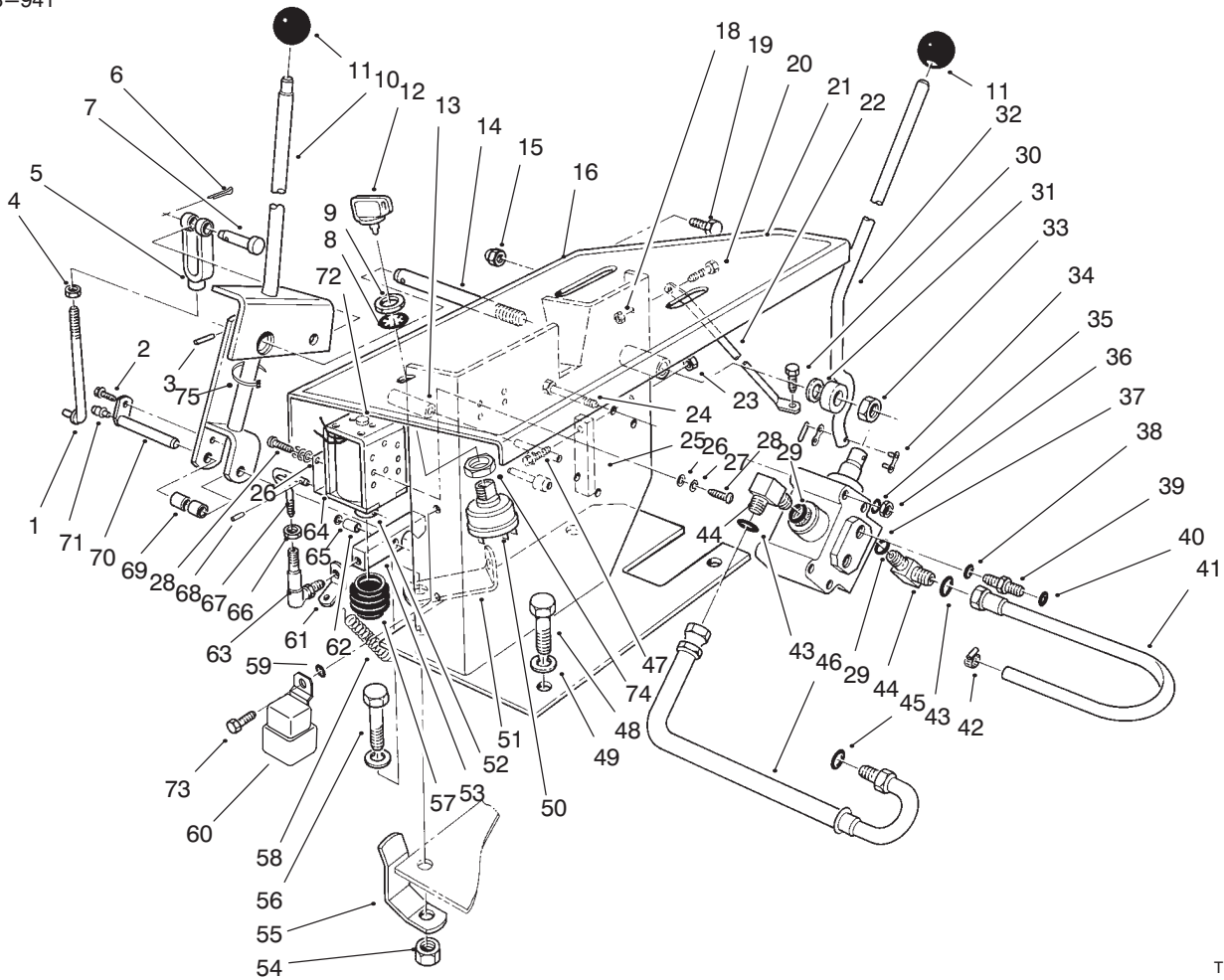
Ref. No.	Part No.	Description	No. Used
6	94-5349	Battery Cable - Positive	1
7	80-3810	Wire Harness - Coring Head Switch	1
8	218-573	Fuse - 5 Amp	1
9	94-6800	Asm. - Wire, Positive	1



T-0958-3

CONTROL PANEL ASSEMBLY

Ref. No.	Part No.	Description	No. Used	Ref. No.	Part No.	Description	No. Used
1	5-1686	Rod - Adjusting	1	28	218-462	Screw - Machine	6
2	32144-112	Screw - Backing Plate	1	29	237-42	O-Ring	2
3	32121-23	Pin - Roll	1	30	46-8560	Screw - Hex Hd. Thd. Form	1
4	3220-3	Nut - Jam	1	31	3256-26	Washer - Flat	1
5	282-22	Yoke	1	32	72-8810	Asm. - Handle, Valve	1
6	3272-6	Pin - Cotter	1	33	32153-5	Nut - Lock	1
7	283-2	Pin - Clevis	1	34	2710-16	Chain - Connecting Link	1
8	3254-5	Washer - Lock, Int. Tooth	1	35	3253-3	Washer - Lock	4
9	218-461	Nut - Hex	1	36	3217-5	Nut - Hex	4
10	72-8710	Handle & Latch	1	37	43-1950	Valve - Hydraulic Control	1
11	233-13	Knob - With Ring	2	38	237-78	O-Ring	2
12	63-8360	Key	2	39	340-92	Fitting - Straight (Incl. Ref. #38 & 40)	2
13	72-9060	Cushion - Solenoid Stop Latch Pin	1	40	237-21	Seal - O-Ring	2
14	72-8690	Shaft - Traction Clutch	1	41	59-4150	Hose - Return	1
15	32111-8	Nut - Lock, Cap	2	42	2412-36	Clamp - Hose	1
16	80-4030	Panel - Control	1	43	237-22	O-Ring	2
18	32128-33	Nut - Lock	1	44	340-77	Fitting - 90° (Inc. Ref. #29 & 43)	2
19	322-26	Screw - HH	2	45	39-7310	O-Ring (Metric)	1
20	321-3	Screw - HH	1	46	59-4140	Hose - Pressure	1
21	80-3910	Decal - Control	1	47	3290-126	Screw - Hex Washer Hd.	1
22	72-9110	Brace - Control Panel	1	48	11-0590	Screw - Cap, Hex. Hd.	3
23	3296-12	Nut - Lock	1	49	3253-21	Washer - Lock	4
24	321-14	Screw - HH	4	50	83-0020	Switch - Starter (Incl. Ref. #8 & 9)	1
25	72-9070	Pad - Bumper	1	51	72-9080	Bracket - Spring	1
26	3256-21	Washer - Flat	8				
27	3253-15	Washer - Lock	6				



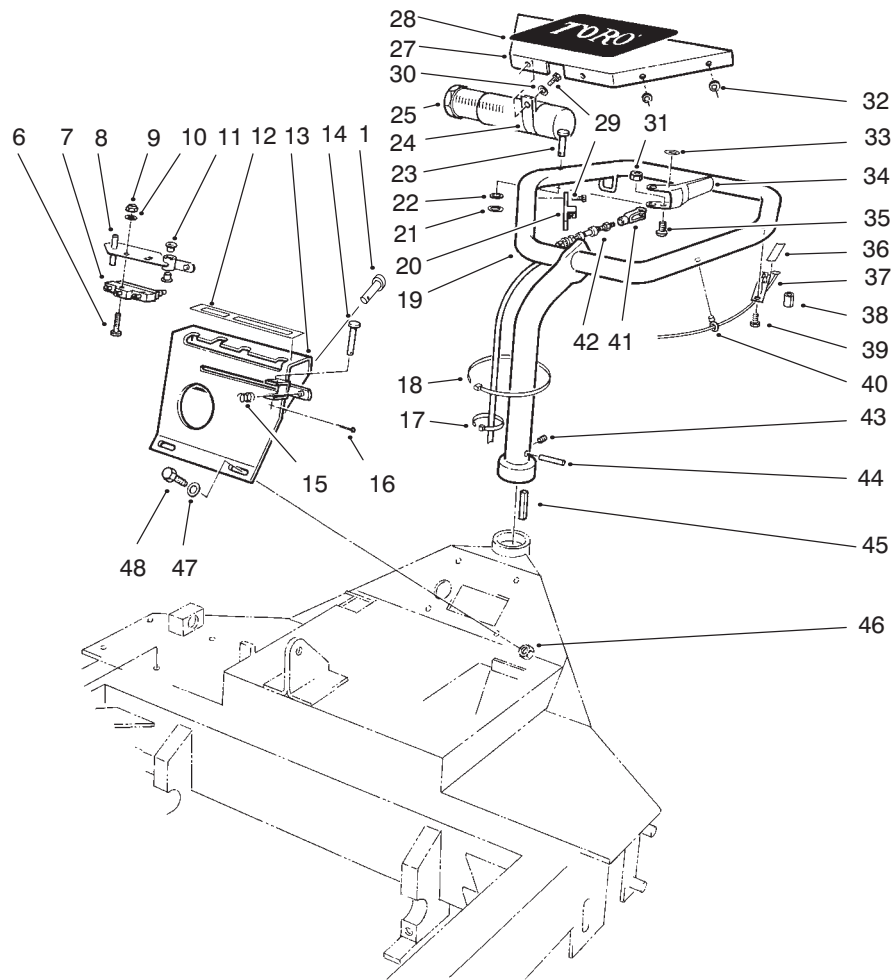
T-0958-3

CONTROL PANEL ASSEMBLY (Continued)

Ref. No.	Part No.	Description	No. Used
52	72-4620	Plunger - Solenoid	1
53	72-8780	Latch - Clutch Solenoid	1
54	32153-2	Nut - Lock	1
55	72-9050	Clip - Control Cover	1
56	323-7	Screw - HH	1
57	67-9510	Seal - Dust	1
58	66-4160	Spring	1
59	3254-8	Washer - Lock, Int. Tooth	1
60	70-1480	Relay	1
61	72-9090	Bracket - Spring Latch	1
62	256-312	Bushing	1
63	18-1720	Ball Joint	1
64	3290-418	Nut - Push On	1

Ref. No.	Part No.	Description	No. Used
65	80-3920	Clamp - Boot Solenoid	1
66	3296-13	Nut - Lock	1
67	72-8790	Rod - Solenoid Adjusting	1
68	32121-90	Pin - Roll	2
69	72-9140	Roller - Latch	2
70	72-9130	Pin - Roller Latch	1
71	302-18	Fitting - Grease	1
72	80-3960	Solenoid Assembly (Incl. Ref. #52)	1
73	321-5	Screw - HH	1
74	3296-42	Nut - Lock	1
75	3290-381	Tie - Cable	2
*	3290-379	Tie - Cable	2

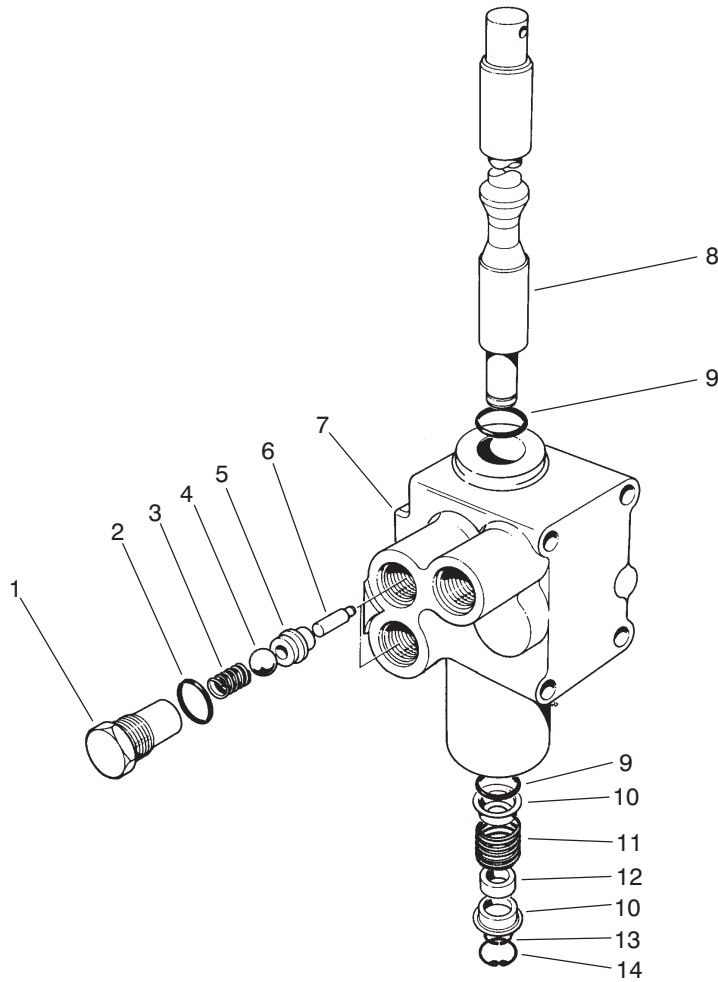
*Not Illustrated



T-0235-1

HANDLE ASSEMBLY

Ref. No.	Part No.	Description	No. Used	Ref. No.	Part No.	Description	No. Used
1	283-89	Pin - Clevis	1	28	67-7320	Decal - Toro	1
6	32105-17	Screw - PPH	2	29	32144-64	Screw - Hex. Hd. Self Tap	6
7	29-6162	Switch	1	30	3256-61	Washer - Flat	2
8	66-4780	Hub & Plate (Incl. Ref. #11)	1	31	3296-12	Nut - Hex.	1
9	3296-9	Nut - Lock	2	32	3256-14	Washer - Flat	2
10	3256-53	Washer - Flat	2	33	59-9860	Decal - Brake	1
11	256-301	Bushing	2	34	59-9560	Handle - Control	1
12	66-4710	Decal - Shift Pattern	1	35	3252-3	Screw - Machine	1
13	66-4750	Plate - Shift	1	36	59-9870	Decal - Interlock	2
14	283-66	Pin - Clevis	1	37	40-9690	Interlock Handle & Switch (Incl. Ref. #40)	2
15	66-4850	Spring	1	38	72-9030	Cushion - Guard	2
16	3272-6	Pin - Cotter	1	39	32104-17	Screw - Hex Hd. Self Tap.	2
17	3290-381	Tie - Cable	5	40	17-9120	Mount - Wire	6
18	3290-379	Tie - Cable	3	41	282-26	Clevis	1
19	95-1902	Handle	1	42	59-4410	Cable - Brake	1
20	59-9730	Bracket - Cable	1	43	3247-2	Screw - Set	1
21	3290-418	Nut - Push On	1	44	32121-49	Pin - Roll	1
22	3-3287	Spacer - Rubber	1	45	13-2840	Key	1
23	283-11	Pin - Clevis	1	46	3296-29	Nut - Lock	4
24	2412-133	R-Clamp	2	47	3256-23	Washer - Flat	4
25	74-0720	Tube	1	48	322-4	Screw - HH	4
27	59-4530	Panel - Handle	1				

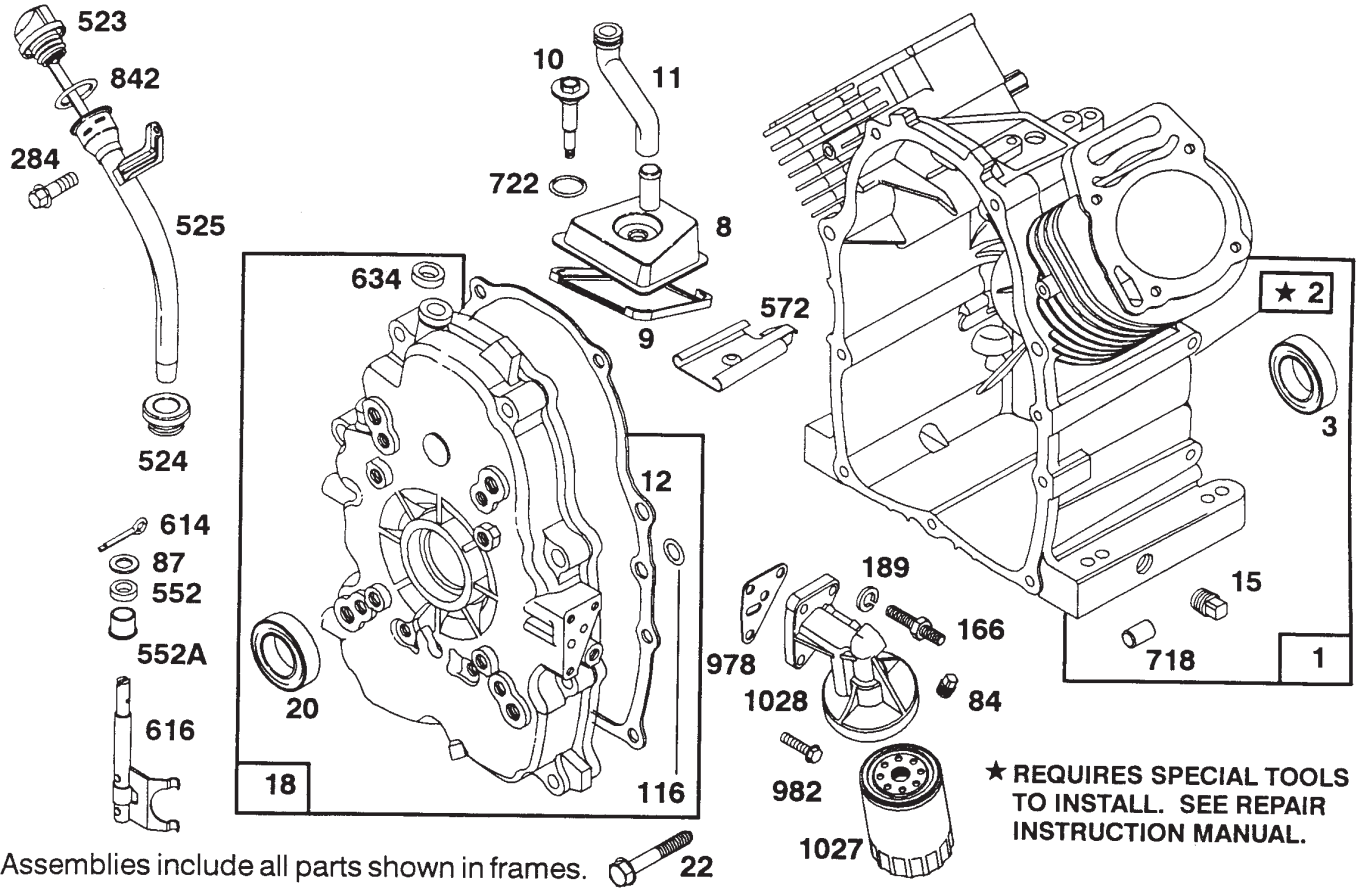


T-0236-1

CONTROL VALVE NO. 43-1950

Ref. No.	Part No.	Description	No. Used
1	22-8330	Plug	2
2	237-42	O-Ring	2
3	22-8340	Spring	2
4	22-8350	Ball	2
5	22-8370	Seat-Check Valve	2
6	22-8360	Pin - Cam	2
7		Body	1

Ref. No.	Part No.	Description	No. Used
8	22-8420	Spool	1
9	22-8500	O-Ring	2
10	22-8380	Retainer - Spring	2
11	22-8410	Spring	1
12	23-3030	Spacer	1
13	22-8480	Snap Ring Spool	1
14	22-8490	Snap Ring	1



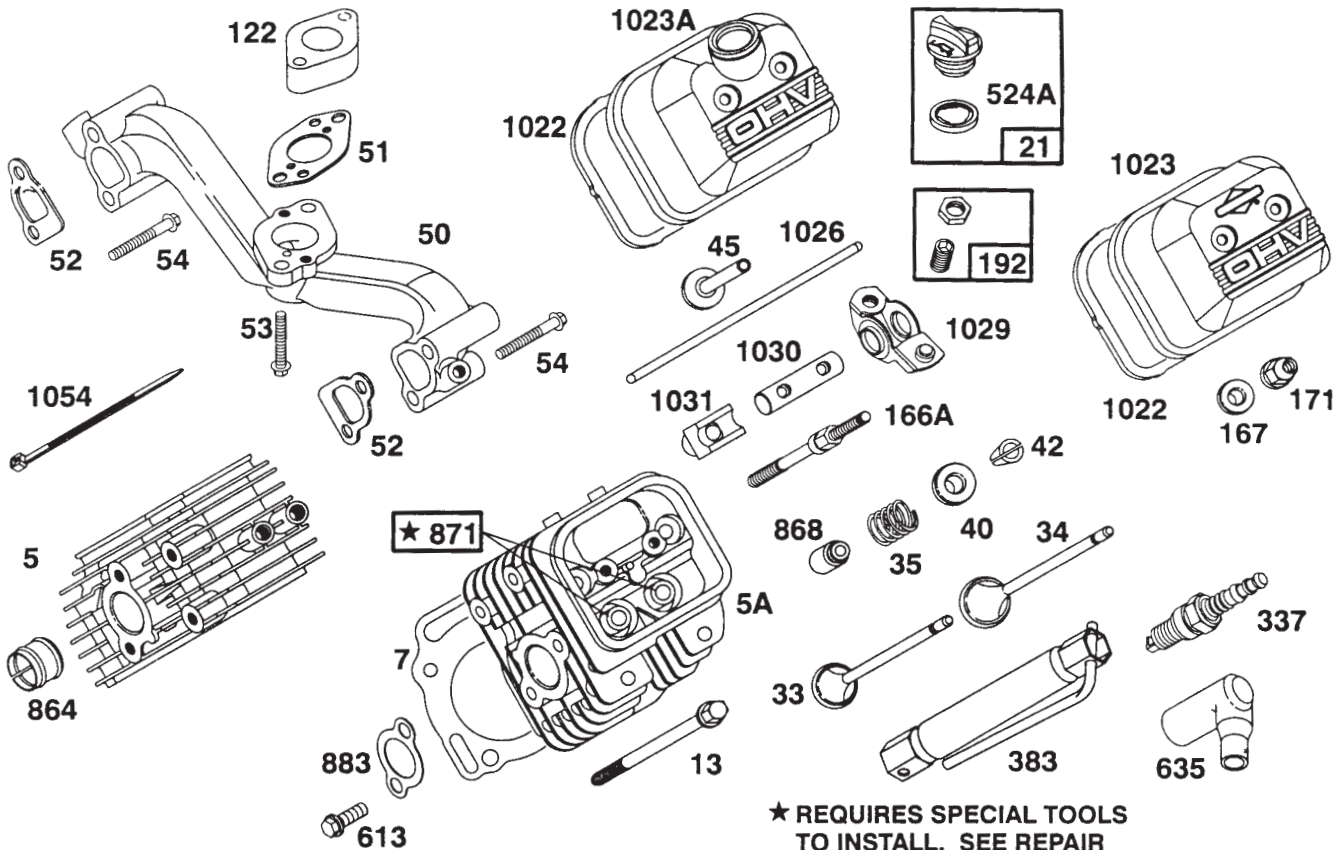
ENGINE BRIGGS & STRATTON MODEL 303447-1233-A1

Ref. No.	Part No.	Description	No. Used	Ref. No.	Part No.	Description	No. Used
1	807521	Cylinder Assembly	1	189	805449	Lockwasher	1
2	805107	Bearing - Cylinder	1	523	807977	Dipstick	1
*3	805101	Seal - Oil	1	*524	805259	Seal - Filler Tube	1
8	807795	Breather Assembly	1	525	807976	Tube - Oil Filler	1
*9	805379	Gasket - Breather	1	552	805412	Bushing - Governor Shaft	1
10	805751	Screw - Hex. Washer Head	1	552A	805413	Bushing - Governor Shaft	1
11	805362	Tube - Breather	1	572	805197	Baffle - Governor	1
*12	805112	Gasket - Crankcase Cover	1	614	805417	Pin - Cotter	1
15	805048	Plug - Oil Drain	1	616	807596	Fork - Governor	1
18	807628	Cover Assembly - Crankcase	1	634	805416	Washer - Governor Shaft	1
*20	805049	Seal - Oil	1	718	805103	Dowel - Crankcase	1
22	805696	Screw - Crankcase Cover	1	*722	805483	Seal - Breather Screw	1
84	91488	Plug - Pipe	1	*842	805386	O-Ring	1
*87	805054	Seal - Governor Shaft	1	*978	805250	Gasket - Oil Filter Adapter	1
*116	805198	O-Ring (Crankcase Cover)	1	982	805030	Screw	1
166	805073	Stud - Oil Filter Adapter	1	1027	492932	Filter - Oil	1
284	805177	Screw - Hex. Head	1	1028	805292	Adapter - Oil Filter	1

NOTE: Obtain parts from Briggs & Stratton dealer or Briggs & Stratton Corp. Milwaukee, WI 53201

Service hot line in USA or Canada 1-800-233-3723.

*Included in Gasket Set - Part No. 807989.



Assemblies include all parts shown in frames.

★ REQUIRES SPECIAL TOOLS TO INSTALL. SEE REPAIR INSTRUCTION MANUAL.

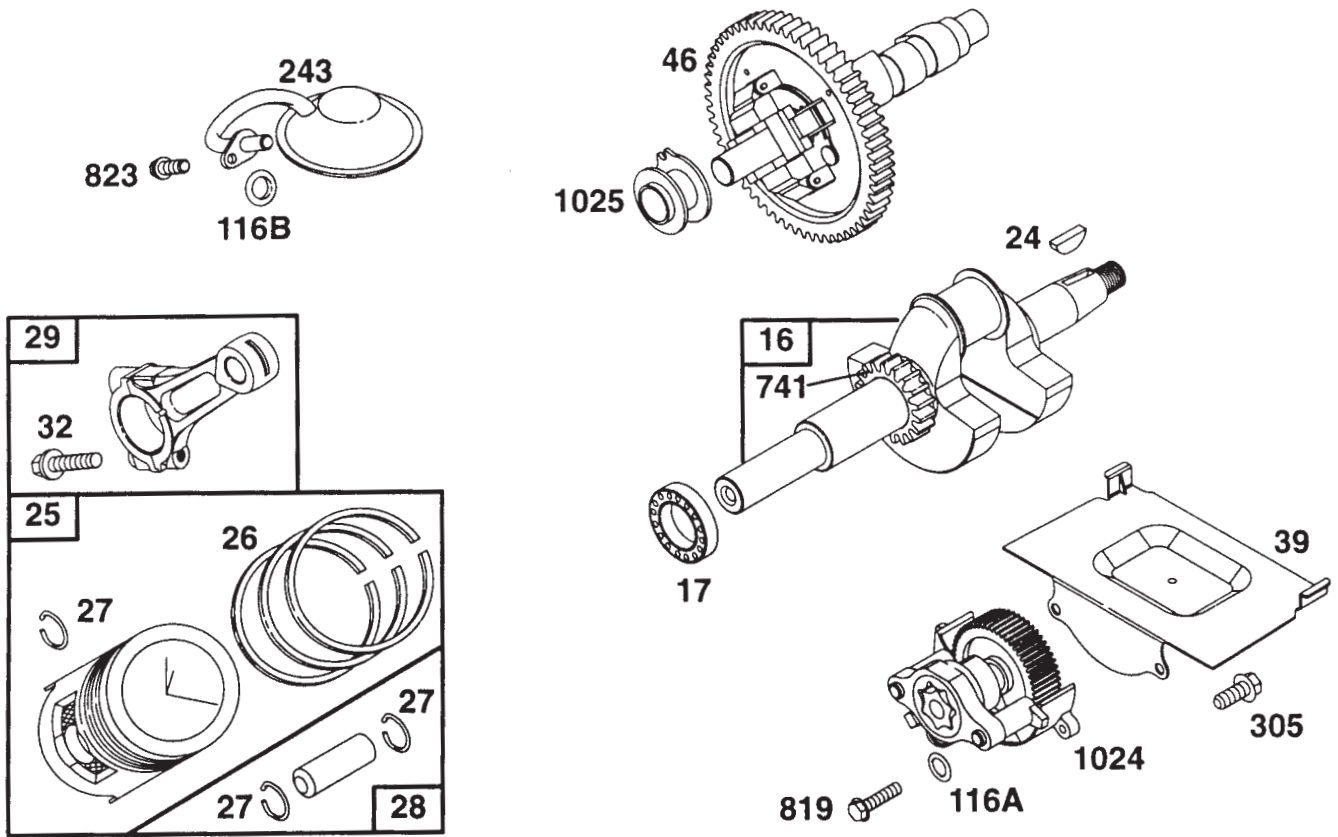
ENGINE BRIGGS & STRATTON MODEL 303447-1233-A1

Ref. No.	Part No.	Description	No. Used
5	807987	Head – Cylinder (Cyl. #1)	1
5A	807988	Head – Cylinder (Cyl. #2)	1
*‡7	807986	Gasket – Cylinder Head	1
13	805097	Screw – Cylinder Head	1
21	491832	Plug – Oil Filter	1
33	805089	Valve – Exhaust	1
34	805090	Valve – Intake	1
35	805078	Spring – Valve	1
40	805092	Retainer – Valve Spring	1
42	805161	Retainer – Valve	1
45	262679	Tappet – Valve	1
50	805772	Manifold – Intake	1
*51	805700	Gasket – Carburetor Mtg.	1
*‡52	805023	Gasket – Intake Manifold	1
53	805466	Screw	1
54	805006	Screw	1
122	805328	Spacer – Carburetor	1
166A	805343	Stud – Rocker Arm	1
*‡167	805420	Washer – Valve Cover	1
‡171	805019	Nut – Nylock	1

Ref. No.	Part No.	Description	No. Used
192	807623	Screw – Valve Adjustment	1
337	496018	Plug – Spark	1
383	19374	Wrench – Spark Plug	1
*‡524A	271983	Seal – Filler Plug	1
613	805158	Screw	1
635	805529	Elbow – Spark Plug	1
864	805083	Liner – Exhaust Port	1
868	805094	Seal – Valve Guide	1
871	805084	Guide – Valve	1
*‡883	805024	Gasket – Exhaust Manifold	1
*‡1022	806039	Gasket – Valve Cover	1
1023	805100	Cover – Valve	1
1023A	808032	Cover – Valve	1
1026	805352	Rod – Push	1
		NOTE: 805617 Rod – Push Used on Exhaust Side Only.	
1029	808096	Arm – Rocker	1
1030	805342	Shaft – Rocker Arm	1
1031	805341	Support – Rocker Arm	1
1054	280275	Tie – Cable	1

*Included in Gasket Set – Part No. 807989.

‡Included in Valve Overhaul Kit – Part No. 807990.



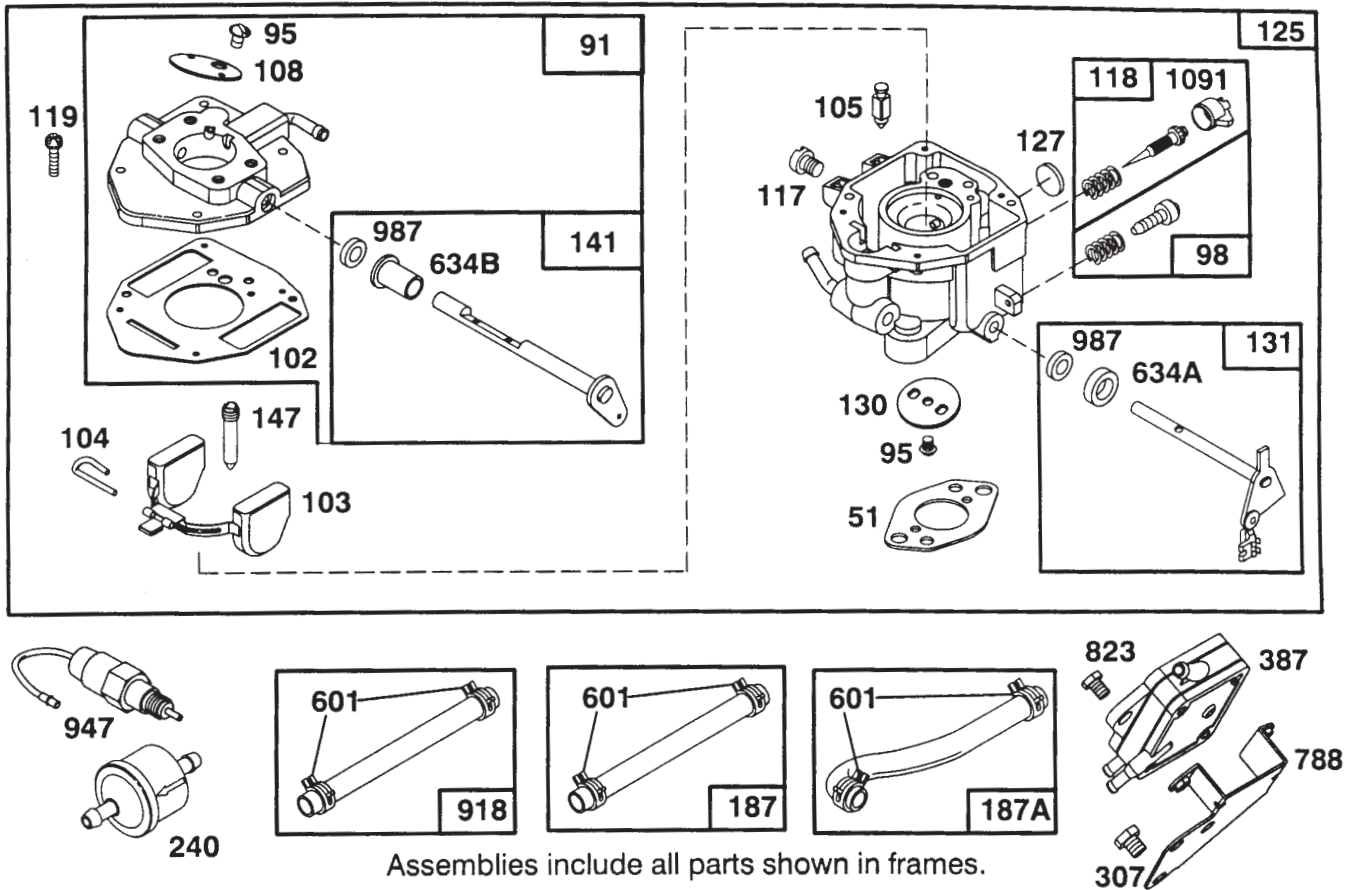
Assemblies include all parts shown in frames.

ENGINE BRIGGS & STRATTON MODEL 303447-1233-A1

Ref. No.	Part No.	Description	No. Used
16	807589	Crankshaft NOTE: To Replace Crankshaft Timing Gear Key Order Part No. 94196.	1
17	805754	Bearing - Ball	1
24	805016	Key - Flywheel	1
25	807619	Piston Assembly (Standard)	1
	807807	Piston Assembly (.010 O.S.)	1
	807809	Piston Assembly (.020 O.S.)	1
	807811	Piston Assembly (.030 O.S.)	1
26	807620	Ring Set - Piston (Standard)	1
	807808	Ring Set - Piston (.010 O.S.)	1
	807810	Ring Set - Piston (.020 O.S.)	1
	807812	Ring Set - Piston (.030 O.S.)	1
27	805099	Lock - Piston Pin	1

Ref. No.	Part No.	Description	No. Used
28	807621	Piston Pin Assembly	1
29	807900	Connecting Rod Assembly	1
32	805395	Screw - Connecting Rod	1
39	805654	Deflector - Oil	1
46	807542	Gear - Cam	1
*116A	805058	O-Ring (Oil Pump)	1
*116B	805316	O-Ring (Pick - Up Tube)	1
243	807598	Screen - Oil Pump Pick-Up	1
305	805406	Screw	1
741	805984	Gear - Timing	1
819	805057	Screw	1
823	805317	Screw - Mounting	1
1024	807644	Oil Pump Assembly	1
1025	805313	Slider - Governor	1

*Included in Gasket Set - Part No. 807989.

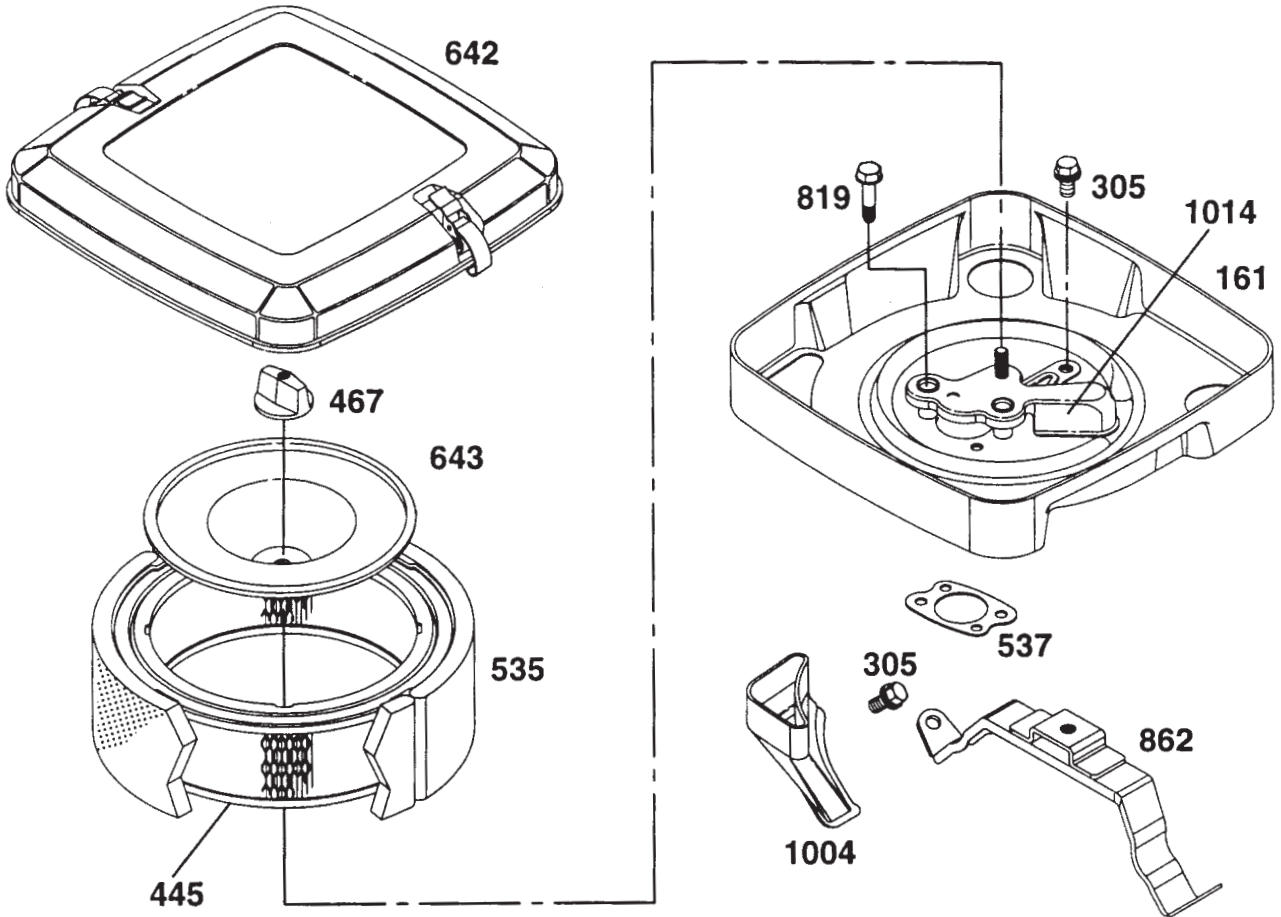


ENGINE BRIGGS & STRATTON MODEL 303447-1233-A1

Ref. No.	Part No.	Description	No. Used
*51	805700	Gasket - Carburetor Mtg.	1
91	807919	Body - Upper Carburetor	1
95	805538	Screw - Valve Mtg.	1
98	808177	Screw - Throttle Adj.	1
†102	805541	Gasket - Carburetor Body	1
103	805546	Float Assembly	1
†104	805545	Pin - Float Hinge	1
†105	805547	Valve - Fuel Inlet	1
108	805539	Valve - Choke	1
117	805852	Jet - Main	1
117	805537	Jet - Main, High Altitude (To be used at altitudes above 5000 feet (1524m) sea level.)	1
118	808293	Valve - Idle Adjust.	1
119	805540	Screw - Upper Body Mtg.	1
125	808294	Carburetor Assembly	1
†127	805559	Plug - Welch	1
130	805554	Valve - Throttle	1

Ref. No.	Part No.	Description	No. Used
131	807720	Shaft - Throttle	1
141	807722	Shaft - Choke	1
†147	805553	Jet - Slow Speed	1
187	393815	Line - Fuel (Cut to Required Length)	1
187A	398367	Line - Fuel	1
240	493629	Filte - Fuel	1
307	805025	Screw - Hex. Hd.	1
387	808322	Pump - Fuel	1
601	93053	Clamp - Hose	1
†634A	805557	Collar - Throttle	1
†634B	805543	Collar - Choke	1
788	807685	Bracket - Fuel Pump	1
823	805317	Screw - Mounting	1
918	393815	Line - Vacuum (Cut to Required Length)	1
947	807664	Solenoid	1
†987	805544	Seal - Shaft	1
1091	805862	Cap - Limiter	1

†Included in Carburetor Kit - Part No. 807726.

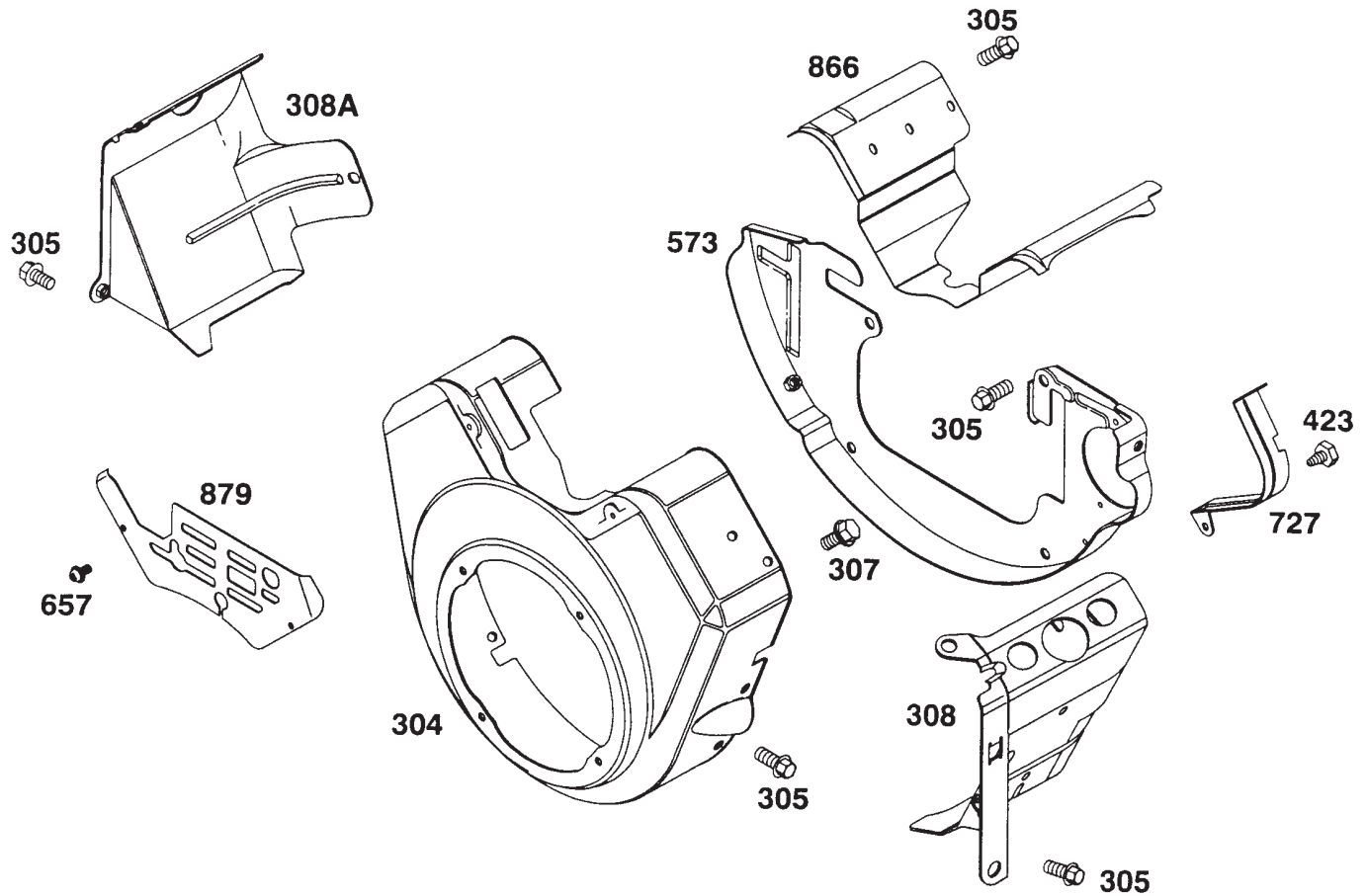


ENGINE BRIGGS & STRATTON MODEL 303447-1233-A1

Ref. No.	Part No.	Description	No. Used
161	807857	Base - Air Cleaner	1
305	805406	Screw - Sem	1
445	394018	Filter - Air	1
467	491875	Knob - Air Cleaner	1
535	272490	Filter - Air	1
*537	805655	Gasket - Air Cleaner	1

Ref. No.	Part No.	Description	No. Used
642	807862	Cover - Air Cleaner	1
643	805631	Plate - Air Cleaner	1
819	805057	Screw - Hex. Hd.	1
862	807796	Bracket - Air Cleaner	1
1004	805632	Strap - Cleaner Mounting	1
1014	807797	Shield - Carburetor	1

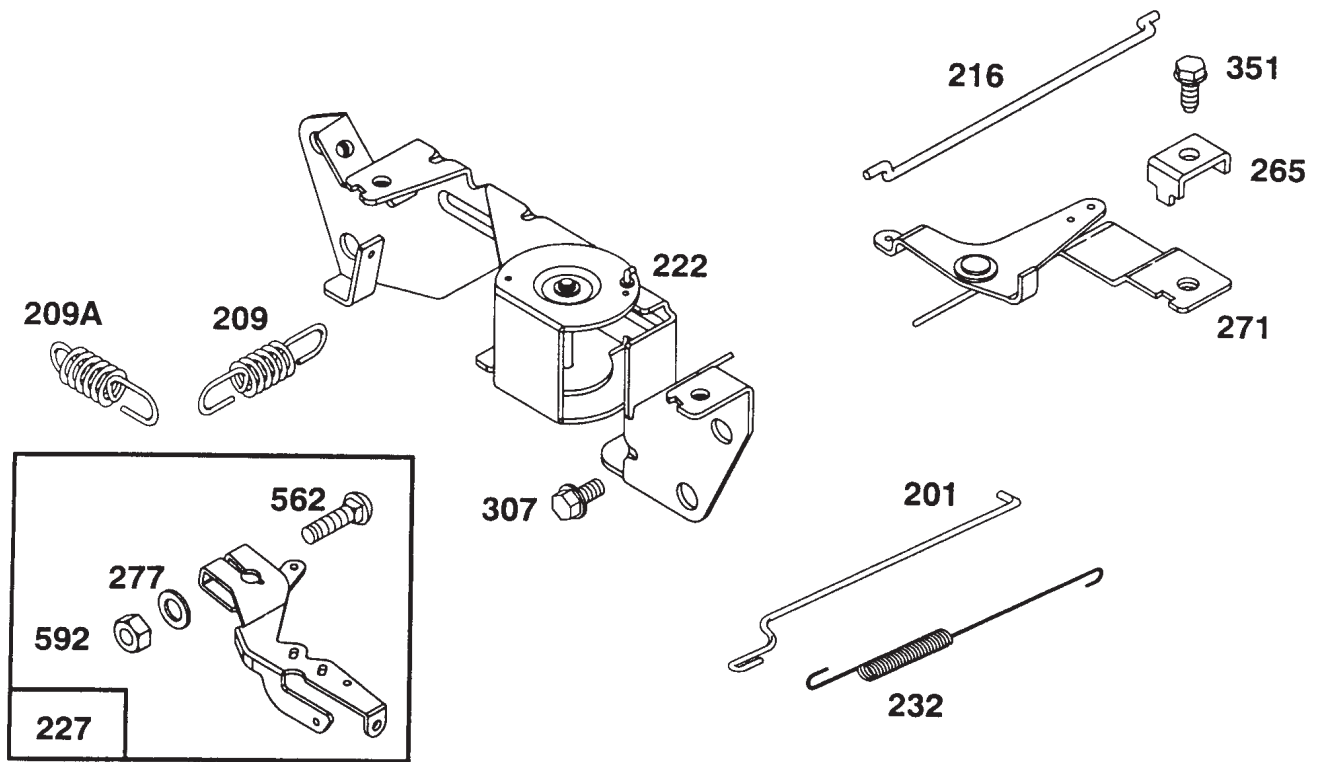
†Included in Gasket Set - Part No. 807989.



ENGINE BRIGGS & STRATTON MODEL 303447-1233-A1

Ref. No.	Part No.	Description	No. Used
304	807898	Housing – Blower	1
305	805406	Screw – Sem	1
307	805025	Screw	1
308	808309	Cover – Air Guide (Cyl. #1)	1
308A	808098	Cover – Air Guide (Cyl. #2)	1

Ref. No.	Part No.	Description	No. Used
373	805383	Nut – Hex.	1
423	805260	Screw	1
573	807663	Back Plate Assembly	1
657	805009	Screw	1
727	805505	Shield – Starter	1
866	805738	Valley Cover – Air Guide	1
879	805841	Cover – Carburetor	1

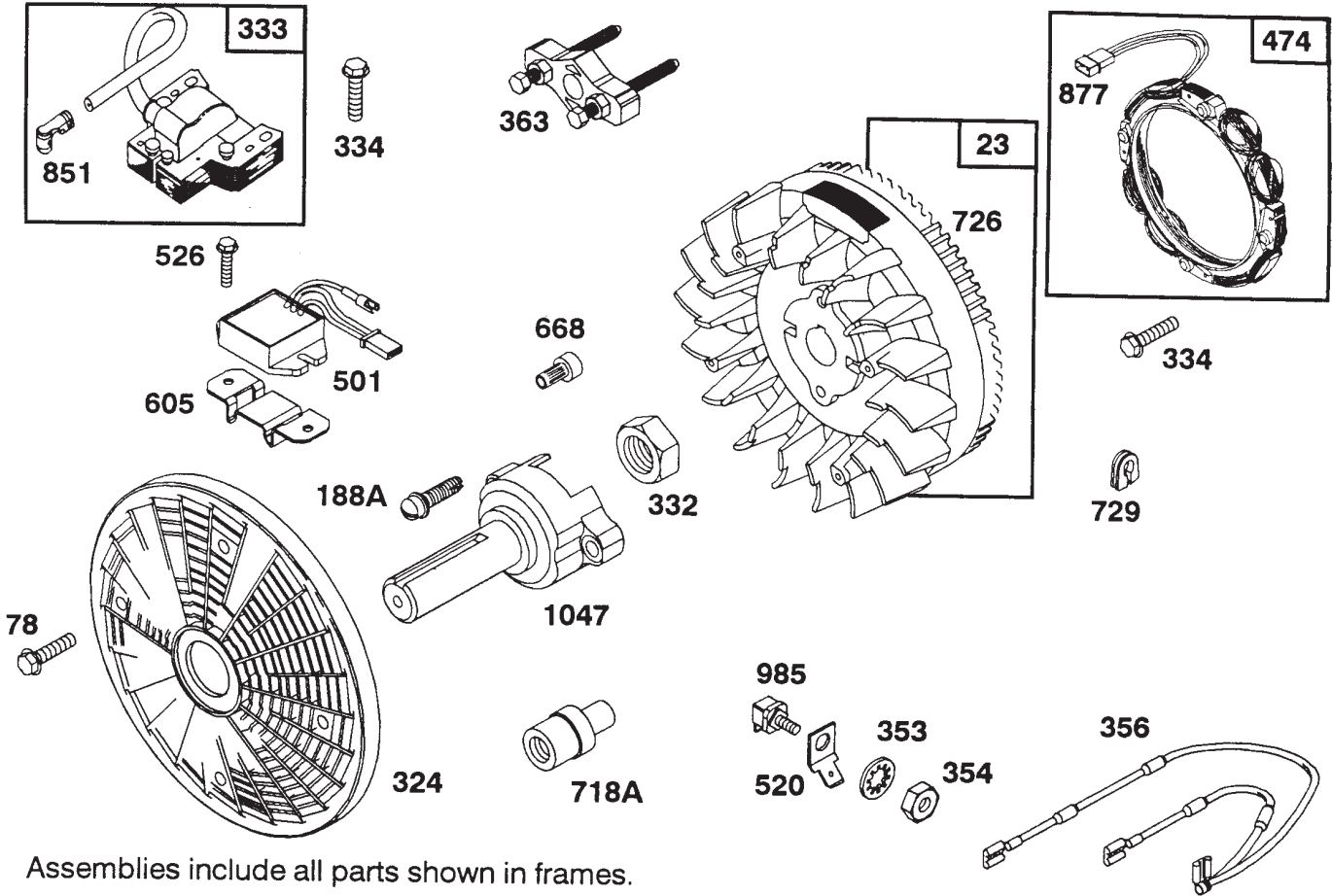


Assemblies include all parts shown in frames.

ENGINE BRIGGS & STRATTON MODEL 303447-1233-A1

Ref. No.	Part No.	Description	No. Used
201	805480	Link - Governor	1
209	805460	Spring - Governor	1
209A	805453	Spring - Governor Idle	1
216	805439	Link - Choke	1
222	807610	Bracket - Governor Control	1
227	807528	Lever Assembly - Governor	1
232	805465	Spring - Governor Link	1

Ref. No.	Part No.	Description	No. Used
265	221535	Clamp - Casing	1
271	808145	Bracket - Choke Control	1
277	805018	Washer	1
307	805025	Screw	1
351	805169	Screw - Hex. Head	1
562	805381	Bolt - Carriage	1
592	805383	Nut - Hex.	1

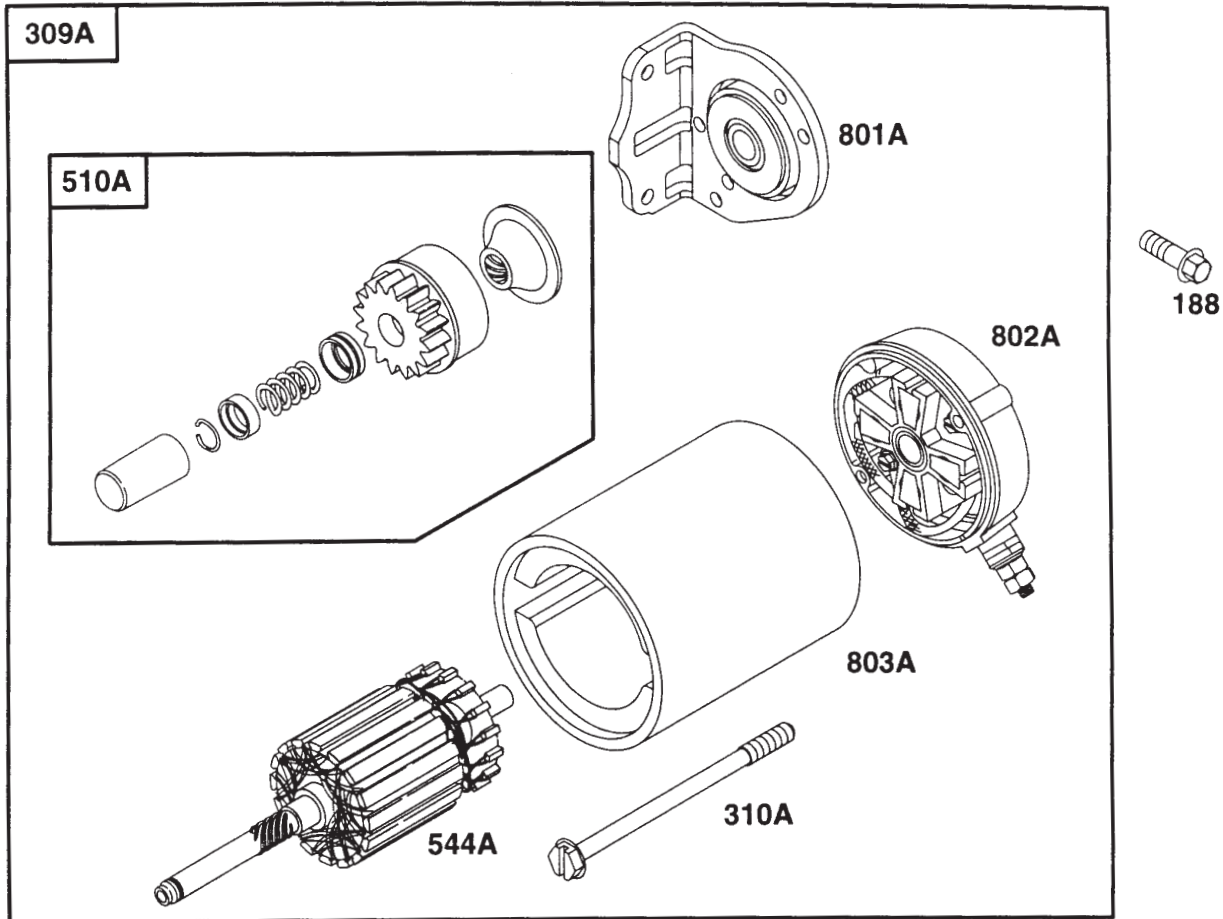


Assemblies include all parts shown in frames.

ENGINE BRIGGS & STRATTON MODEL 303447-1233-A1

Ref. No.	Part No.	Description	No. Used
23	808128	Flywheel - Magneto	1
78	805447	Screw - Hex. Hd.	1
188A	93847	Screw - Hex. Hd.	1
324	805723	Screen - Rotating	1
332	806028	Nut - Hex.	1
333	492341	Armature - Magneto	1
334	805407	Screw - Hex. Hd.	1
353	92791	Washer - Lock (Internal Tooth)	1
354	90576	Nut - Hex.	1
356	493792	Wire - Assy.	1
363	19203	Puller - Flywheel	1
474	393295	Stator - Alternator	1

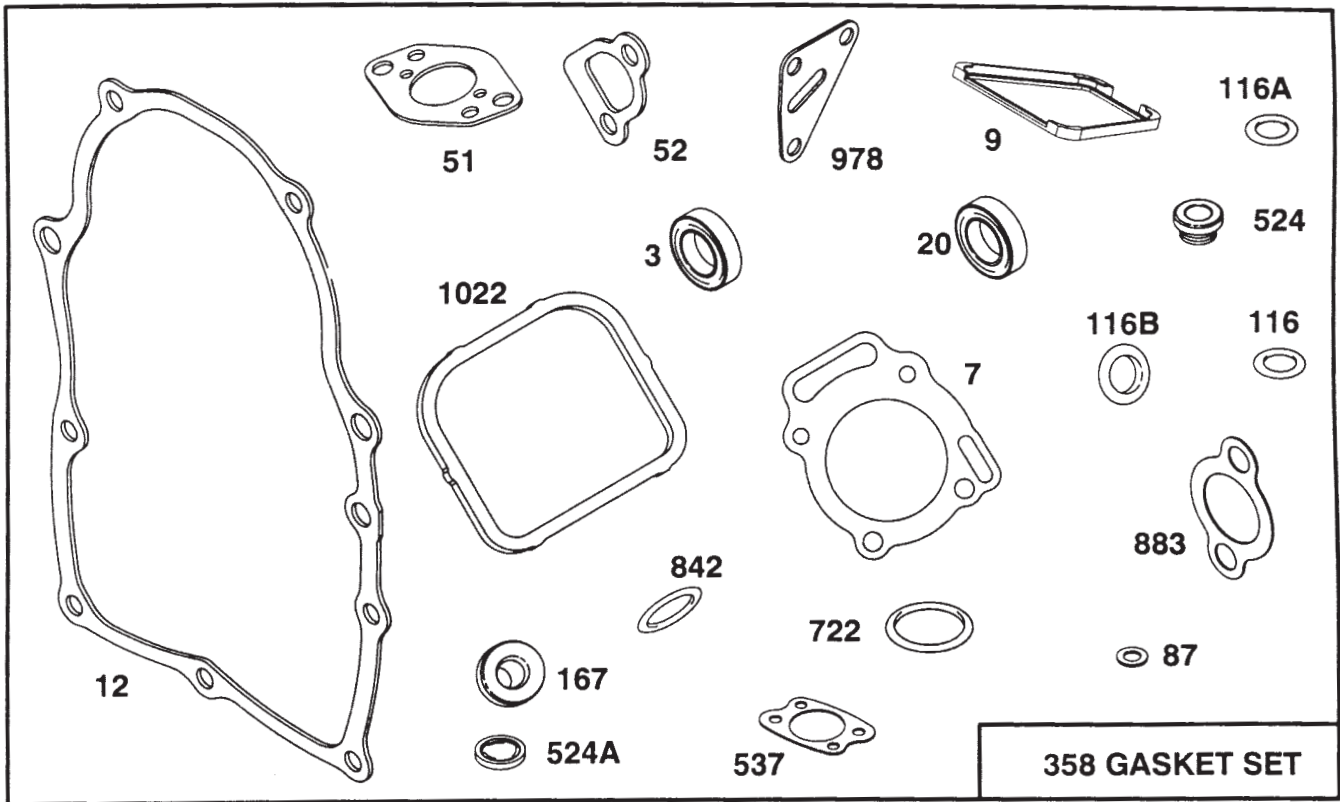
Ref. No.	Part No.	Description	No. Used
501	394890	Regulator - Alternator	1
520	93722	Terminal - Spade	1
526	805448	Screw - Hex. Hd.	1
605	222934	Bracket - Starter Solenoid	1
668	805402	Spacer	1
718A	805613	Pin - Pilot	1
726	808162	Gear - Flywheel Ring Includes Mounting Hardware	1
729	805641	Grommet	1
851	493880	Terminal - Ignition Cable	1
877	393537	Wire - Alternator	1
985	398525	Insulator	1
1047	262949	Shaft - Stub	1



ENGINE BRIGGS & STRATTON MODEL 303447-1233-A1

Ref. No.	Part No.	Description	No. Used
188	805247	Screw - Hex. Head	1
309A	808106	Motor - Starter	1
310A	496880	Bolt - Thru	1
510A	496881	Drive - Starter	1
544A	496816	Armature - Starter	1

Ref. No.	Part No.	Description	No. Used
801A	496814	Cap - Drive	1
802A	496813	Cap - End NOTE: Includes 496887 Brush Set.	1
803A	496815	Housing - Starter	1



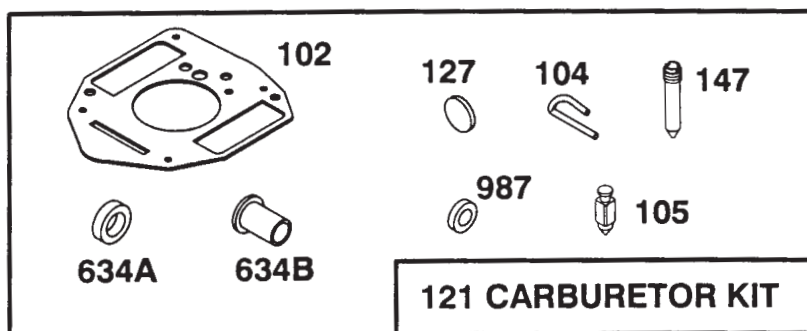
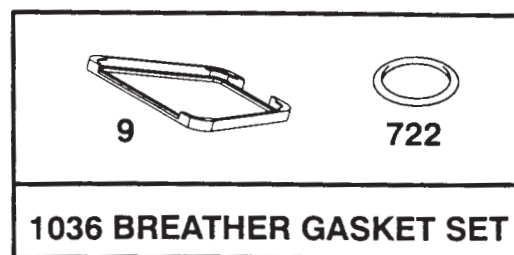
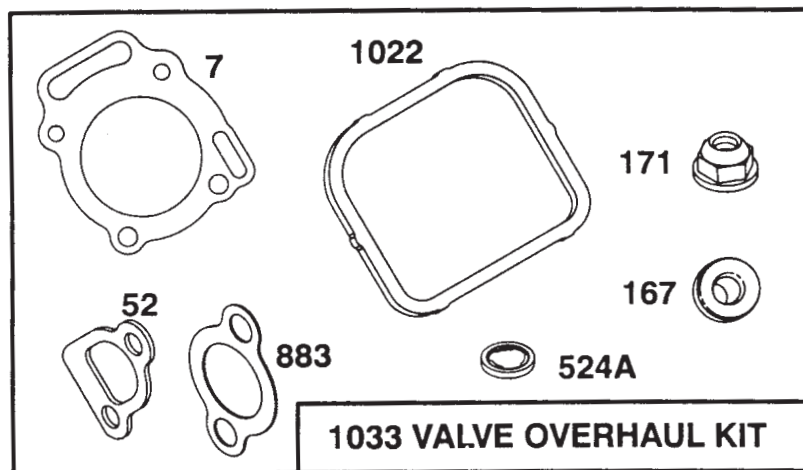
ENGINE BRIGGS & STRATTON MODEL 303447-1233-A1

Ref. No.	Part No.	Description	No. Used
*3	805101	Seal - Oil	1
*‡7	807986	Gasket - Cylinder Head	1
*9	805379	Gasket - Breather	1
*12	805112	Gasket - Crankcase Cover	1
*20	805049	Seal - Oil	1
*51	805700	Gasket - Carburetor Mtg.	1
*‡52	805023	Gasket - Intake Manifold	1
*87	805054	Seal - Governor Shaft	1
*116	805198	O-Ring (Crankcase Cover)	1
*116A	805058	O-Ring (Oil Pump)	1
*116B	805316	O-Ring (Pick - Up Tube)	1

Ref. No.	Part No.	Description	No. Used
*‡167	805420	Washer - Valve Cover	1
358	807989	Gasket Set	1
*524	805259	Seal - Filler Tube	1
*‡524A	271983	Seal - Filler Plug	1
*537	805655	Gasket - Air Cleaner	1
*722	805483	Seal - Breather Screw	1
*842	805386	O-Ring	1
*883	805024	Gasket - Exhaust Manifold	1
*978	805250	Gasket - Oil Filter Adapter	1
*‡1022	806039	Gasket - Valve Cover	1

*Included in Gasket Set - Part No. 807989.

‡Included in Valve Overhaul Kit - Part No. 807990.



Assemblies include all parts shown in frames.

ENGINE BRIGGS & STRATTON MODEL 303447-1233-A1

Ref. No.	Part No.	Description	No. Used	Ref. No.	Part No.	Description	No. Used
*‡7	807986	Gasket – Cylinder Head	1	‡171	805019	Nut – Nylock	1
*9	805379	Gasket – Breather	1	*‡524A	271983	Seal – Filler Plug	1
*‡52	805023	Gasket – Intake Manifold	1	†634A	805557	Collar – Throttle	1
†102	805541	Gasket – Carburetor Body	1	†634B	805543	Collar – Choke	1
†104	805545	Pin – Float Hinge	1	*722	805483	Seal – Breather Screw	1
†105	805547	Valve – Fuel Inlet	1	*‡883	805024	Gasket – Exhaust Manifold	1
121	807726	Carburetor Kit	1	†987	805544	Seal – Shaft	1
†127	805559	Plug – Welch	1	*‡1022	806039	Gasket – Valve Cover	1
†147	805553	Jet – Slow Speed	1	1033	807990	Overhaul Kit – Valve	1
*‡167	805420	Washer – Valve Cover	1	1036	807688	Gasket Set – Breather	1

*Included in Gasket Set – Part No. 807989.

‡Included in Valve Overhaul Kit – Part No. 807990.

†Included in Carburetor Kit – Part No. 807726.

TORO PART NUMBER INDEX

Part No.	Description	Pg. No.	Ref. No.	Qty.	Part No.	Description	Pg. No.	Ref. No.	Qty.
3-3287	Spacer	20	18	6	44-7840	Thrust Plate	13	5	1
3-3287	Spacer	10	61	2	44-7850	Ring - Shaft Retaining	13	1	1
3-3287	Spacer - Rubber	25	22	1	44-7860	Retaining Ring Service Kit	13	*	1
3-4685	Washer - Thrust	11	40	2	46-6560	Bushing	20	8	1
4-2390	Washer	18	42	1	46-8560	Screw - HHST	18	49	4
5-0786	Key	11	39	2	46-8560	Screw - Hex Hd. Thd. Form	23	30	1
5-0930	Key	18	33	1	46-8560	Screw - Thread Forming	6	46	2
5-1686	Rod - Adjusting	23	1	1	46-8560	Screw - Cap Hex. Hd.	9	3	17
5-2490	Bolt - Shoulder	10	60	2	48-9470	Screw - Cap Hex Hd.	11	14	2
5-7290	Spring	17	16	1	59-2070	Bar - Keeper	6	49	2
7-3328	Bolt - Battery	17	34	2	59-2080	Chain - Roller	3	12	2
10-4850	Spring - Compression	8	5	1	59-2130	Pulley	6	24	1
10-6830	Stud - Drive	9	42	8	59-2140	Pulley	11	36	1
11-0590	Screw - Cap, Hex. Hd.	23	48	3	59-2150	Bushing	11	37	1
11-0590	Screw - HH	19	55	4	59-2380	Cap - Dust	9	46	2
11-0590	Screw - Thread Forming	11	13	2	59-2390	Sprocket	6	47	2
13-1509	Arm-Tine	3	4	4	59-2390	Sprocket - Idler	9	33	2
13-2840	Key	18	3	1	59-2420	Bushing	9	31	2
13-2840	Key	25	45	1	59-2430	Nut - Special	9	53	2
17-9120	Mount-Wire	25	40	6	59-2500	Block	4	1	8
18-1720	Ball Joint	24	63	1	59-2520	Plate - Wear R.H.	3	34	4
19-2530	Switch - Start. Safety N.O.	8	1	2	59-2550	Plate - Wear L.H.	3	40	4
21-0360	Hex Nut (Metric)	11	45	1	59-2570	Spacer - Short	7	74	1
22-6090	Washer - Thrust	9	14	2	59-2580	Spacer - Long	7	72	1
22-8330	Plug	26	1	2	59-2600	Bushing	6	48	4
22-8340	Spring	26	3	2	59-2610	Shaft	7	55	2
22-8350	Ball	26	4	2	59-2620	Eye Bolt	7	54	4
22-8360	Pin - Cam	26	6	2	59-2710	Clip - Retaining	3	6	12
22-8370	Seat-Check Valve	26	5	2	59-2710	Clip - Retaining	6	28	3
22-8380	Retainer - Spring	26	10	2	59-2770	Rod - Pivot	2	4	2
22-8410	Spring	26	11	1	59-3270	Guard - Sprocket L.H.	9	*	1
22-8420	Spool	26	8	1	59-3280	Guard - Sprocket R.H.	9	50	1
22-8480	Snap Ring Spool	26	13	1	59-3490	Spring - Compression	2	3	4
22-8490	Snap Ring	26	14	1	59-3510	Bushing - Short	3	27	8
22-8500	O-Ring	26	9	2	59-3670	Tine - Coring,	4	6	12
23-3030	Spacer	26	12	1	59-3690	Tine - Coring,	4	4	12
27-6380	O-Ring	15	72	2	59-3790	Bushing Assembly	6	26	1
27-6390	Gasket	11	22	2	59-4040	Assembly - Hub	9	43	2
27-6390	Gasket - Lever Housing	15	31	2	59-4100	Brake - Disc	12	58	1
27-6420	Seal - Oil	15	45	3	59-4140	Hose - Pressure	23	46	1
27-7310	Decal - Refueling	20	14	1	59-4150	Hose - Return	23	41	1
28-1400	Battery	17	49	1	59-4160	Hose - Cylinder	11	4	1
28-2480	Washer	9	21	2	59-4200	V-Belt	11	51	1
28-3860	Battery Cable - Ground	22	5	1	59-4210	Key	6	27	1
28-4210	Solenoid	19	59	1	59-4220	Deflector - Kickout	3	39	4
28-4250	Switch - Neutral N. C.	8	4	1	59-4310	Spacer	11	47	1
28-8080	Boot - Battery	17	24	1	59-4320	Spacer	17	13	1
29-6162	Switch	25	7	1	59-4320	Spacer	11	16	2
37-5760	Pulley - Idler	7	71	1	59-4350	Decal - Toro	1	1	1
37-8300	Pin - Pump, Ring Dowel	13	17	2	59-4410	Cable - Brake	25	42	1
37-8340	Seal - Drive Shaft	13	21	1	59-4440	Decal - Greens Aerator	9	4	2
37-8360	Seal - O-Ring	13	3	1	59-4530	Panel - Handle	25	27	1
37-8380	End Plate	13	10	1	59-9460	Guide	9	27	2
37-8400	Pump Reservoir Service Kit	13	16	1	59-9470	Pad - Battery	17	35	1
37-8410	Assembly - Valve, Control	13	19	1	59-9560	Handle - Control	25	34	1
37-8420	Asm. - Cap, Reservoir	13	12	1	59-9610	Plate - Backup	1	13	2
37-8440	Ring - Retaining	13	11	1	59-9611	Plate - Backup	1	17	2
37-8450	Spring - Flow Control	13	20	1	59-9620	Cover - Idler	9	35	2
37-8460	Seal Service Kit	13	*	1	59-9630	Spacer	9	39	2
38-1830	Pulley	11	50	1	59-9640	Plate - Handle	7	59	2
39-7310	O-Ring (Metric)	23	45	1	59-9650	Retainer - Bearing	9	22	4
39-8680	Assembly - Fitting	13	14	1	59-9730	Bracket - Cable	25	20	1
39-8700	Stud Pump Mounting	13	13	2	59-9750	Assembly - Latch	7	60	2
39-8710	Seal - O-Ring	13	15	1	59-9770	Tine - Coring, Long Wear	4	3	12
40-9690	Interlock Handle & Switch	25	37	2	59-9860	Decal - Brake	25	33	1
42-9850	Washer - Lock	18	17	4	59-9870	Decal - Interlock	25	36	2
43-1950	Valve - Hydraulic Control	23	37	1	59-9930	Decal - Danger	1	18	1
44-2680	Shaft - Service Retaining	13	22	1	60-9760	Nut - Lock	16	2	1
44-7800	Pump - Steering	11	49	1	60-9870	Screw - Adjustment	7	64	2
44-7810	Ring Service Kit Rotor Vane	13	6	1	60-9920	Screw (Metric)	11	48	1
44-7820	Spring Pressure Plate	13	9	1	60-9930	Frame Gauge	10	67	1
44-7830	Pressure Plate	13	8	1	61-9150	Pulley	18	1	1

*Not Illustrated

TORO PART NUMBER INDEX (Cont.)

3318-941

Part No.	Description	Pg. Ref.			Part No.	Description	Pg. Ref.		
		No.	No.	Qty.			No.	No.	Qty.
61-9160	Stud	9	10	2	72-4660	Turf Guard - R.H.	2	9	1
61-9160	Stud	3	28	8	72-4680	Turf Guard - Center	2	10	1
61-9780	Cap-Hub	9	19	2	72-4760	O-Ring Seal, Chain	3	15	A/R
62-4600	Tine - Coring,	4	8	12	72-4860	Bracket - Pump Support	12	56	1
62-4610	Block	4	7	8	72-8650	Arm - Cross Shaft	17	3	1
62-4660	Assembly - Cylinder	11	20	1	72-8690	Shaft - Traction Clutch	23	14	1
62-4670	Clevis - Rod	16	16	1	72-8710	Handle & Latch	23	10	1
62-4680	Head	16	12	1	72-8780	Latch - Clutch Solenoid	24	53	1
62-4690	Piston	16	3	1	72-8790	Rod - Solenoid Adjusting	24	67	1
62-4700	Rod	16	7	1	72-8810	Asm. - Handle, Valve	23	32	1
62-4720	Seal Repair Kit	16	*	1	72-8920	Guide - Belt, Traction	17	38	1
62-4740	Timing Rod	3	*	4	72-9030	Cushion - Guard	25	38	2
63-8360	Key	23	12	2	72-9050	Clip - Control Cover	24	55	1
66-3120	Screw - HH	18	19	4	72-9060	Cushion - Solenoid Stop	23	13	1
66-3290	Plate - Guide Shift	11	23	1	72-9070	Pad - Bumper	23	25	1
66-3360	Arm - Brake Clutch	17	23	1	72-9080	Bracket - Spring	23	51	1
66-3390	Retainer - Brake Spring	12	61	1	72-9090	Bracket - Spring Latch	24	61	1
66-3400	Rod - Brake Take-up	12	65	1	72-9100	Frame	7	68	1
66-3420	Bracket - Spring Brake	17	42	1	72-9110	Brace - Control Panel	23	22	1
66-3440	Cross Shaft - Clutch	17	27	1	72-9130	Pin - Roller Latch	24	70	1
66-3470	Pulley - Idler	6	3	1	72-9140	Roller - Latch	24	69	2
66-3480	Shaft - Idler	6	5	1	74-0720	Tube	25	25	1
66-3560	Guide - Belt	17	12	1	76-2300	Hose - Cylinder	11	3	1
66-3590	Bracket - Drive, Take-up	17	20	1	76-2370	Guard - Chain	7	76	2
66-3790	Sprocket	6	18	2	76-2590	Brake - Caliper	12	63	1
66-3810	Guide - Belt	7	67	1	76-2610	Arm - Brake	17	43	1
66-3840	Shaft - Power	6	21	1	76-2620	Bracket	11	8	1
66-3920	Bracket - Spring	11	28	1	77-5320	Tine - Spiker,	4	2	12
66-3930	Clevis	11	5	1	77-5340	Tine - Spiker, 1/4 x 2 1/2	5	8	28
66-4030	Assembly - Crank, Long	3	11	2	77-5350	Clamp - Holder, Tine	5	3	8
66-4040	Assembly - Crank, Short	3	22	2	77-5360	Plate - Holder, Turf	5	1	4
66-4060	Pin - Idler	1	10	1	77-5370	Holder - Tine	5	4	4
66-4070	V-Belt	6	33	1	77-5380	Guard - Turf	5	2	4
66-4110	Cover - Controls	1	3	1	80-0180	Lever - Cam	21	12	1
66-4130	Cover - Coring Head	1	2	1	80-0270	Lining	21	8	2
66-4150	Spring	12	62	1	80-0280	Anvil Sub Asm.	21	10	1
66-4160	Spring	18	27	1	80-0290	Kit - Repair, Lining	21	*	1
66-4160	Spring	24	58	1	80-0310	Kit - Service	21	*	1
66-4180	Spring	17	22	1	80-2710	Assembly - Front Axle	9	13	1
66-4210	Pulley - Idler	17	14	1	80-2830	Housing Switch	8	3	1
66-4270	Spring - Extension	6	12	2	80-2840	Plunger - Switch	8	6	1
66-4340	V-Belt	17	15	1	80-3810	Wire Harness - Coring	22	7	1
66-4380	Spacer	6	2	2	80-3820	Bracket - Switch	6	44	1
66-4400	Guide - Belt	17	8	1	80-3830	Bolt - Shoulder	3	41	4
66-4440	Holder - Idler Pin	1	11	1	80-3890	Arm - Brake	12	64	1
66-4460	Spring	11	26	1	80-3910	Decal - Control	23	21	1
66-4480	Actuator - Switch	6	41	1	80-3920	Clamp - Boot Solenoid	24	65	1
66-4520	Housing - Bearing	17	6	1	80-3930	Guard - Switch	7	85	1
66-4530	Bracket - Lockup	10	62	2	80-3960	Solenoid Assembly	24	72	1
66-4590	Transaxle	11	52	1	80-3970	Lever - Shift	15	7	1
66-4600	Clevis - Brake	12	71	1	80-4030	Panel - Control	23	16	1
66-4680	Spacer	6	30	1	82-8020	Clamp	9	6	2
66-4690	Spacer	6	19	1	83-0020	Switch - Starter	23	50	1
66-4710	Decal - Shift Pattern	25	12	1	84-8480	Sleeve	7	57	2
66-4730	Bearing	17	5	3	92-3188	Diode	22	2	1
66-4750	Plate - Shift	25	13	1	92-3191	Diode	22	1	1
66-4780	Hub & Plate	25	8	1	92-7941	Tine - Open Center,	4	9	12
66-4850	Spring	25	15	1	93-0177	Shaft	9	48	2
66-8980	Asm. - Wear Plate, R.H.	3	35	4	93-0307	Nut - Retainer	9	51	2
66-8990	Asm. - Wear Plate, L.H.	3	36	4	93-0309	Washer - Tab	9	45	2
66-9050	Decal - Shift	18	6	1	93-3101	Cap - Fuel	20	12	1
66-9070	Guard - Chassis L.H.	9	2	1	94-1751	Guard - Pulley	6	9	1
66-9080	Keeper - Shift Lever	15	6	1	94-3417	Tine - Open Center	4	11	24
66-9110	Decal - Start	18	7	1	94-3418	Tine - Open Center,	4	14	12
67-5360	Decal - Danger	10	69	2	94-3419	Tine - Coring,	4	5	12
67-5360	Decal - Danger	7	88	1	94-3420	Block	4	13	8
67-7320	Decal - Toro	25	28	1	94-3421	Block - Outboard	4	10	8
67-9510	Seal - Dust	24	57	1	94-3432	Pulley - Engine	18	47	1
68-3110	Tube-Oil	11	31	1	94-3433	Wire Harness - Main	22	3	1
70-1480	Relay	24	60	1	94-3435	Tank - Fuel	20	15	1
72-4620	Plunger - Solenoid	24	52	1	94-3437	Plate - Mount, Engine	18	51	1
72-4640	Turf Guard - L.H.	2	11	1	94-3438	Muffler	18	28	1

*Not Illustrated

TORO PART NUMBER INDEX (Cont.)

Part No.	Description	Pg. No.	Ref. No.	Qty.	Part No.	Description	Pg. No.	Ref. No.	Qty.
94-3442	Frame	10	63	1	95-7221	Gear - Shifting (3rd & 4th)	15	32	1
94-5301	Spark Arrester	19	54	1	95-7222	Gear - Shifting (1st, 2nd)	15	33	1
94-5310	Decal - Choke/Throttle	18	9	1	95-7223	Gear-Bevel	15	34	2
94-5313	Asm. - Exhaust Tube	18	18	1	95-7224	Gear - Idler	15	35	1
94-5314	Asm. - Exhaust Tube	18	16	1	95-7225	Gear Cluster Assembly	15	36	1
94-5315	Mount - Muffler	18	24	1	95-7226	Spacer	15	37	1
94-5316	Guide - Belt	18	34	1	95-7227	Ring-Snap	15	38	2
94-5321	Guard - Muffler	20	4	1	95-7228	Shaft - Input	15	39	1
94-5341	Support - Muffler	18	48	1	95-7229	Spur Gear - Input Shaft	15	40	1
94-5343	Clamp - Battery	17	30	1	95-7230	Washer - Thrust	15	41	2
94-5349	Asm. - Wire	17	46	1	95-7231	Seal & Retainer Asm. - Oil	15	42	2
94-5349	Battery Cable - Positive	22	6	1	95-7232	Gear - Output	15	43	1
94-6800	Asm. - Wire	18	50	1	95-7233	Pinion - Output	15	44	1
94-6800	Asm. - Wire, Positive	22	9	1	95-7234	Housing - Axle	15	46	2
94-6802	Rod - Control, Throttle	18	26	1	95-7235	Screw - Flanged Hex Hd.	15	49	11
94-6803	Pipe - Exhaust	18	36	1	95-7236	Pin - Dowel	15	50	2
94-6804	Nipple - Pipe	18	22	1	95-7237	Screw - Hex Hd.	15	51	8
94-6805	Asm. - Stand Pipe, Fuel	20	11	1	95-7238	Bearing - Needle	15	54	2
94-6808	Handle	6	36	1	95-7239	Bearing - Needle	15	55	3
94-6809	Hose - Fuel	18	8	1	95-7240	Bearing - Ball	15	56	1
94-6809	Hose - Fuel	20	9	1	95-7241	Bearing - Needle	15	57	2
94-6810	Bracket - Adjuster, Throttle	18	12	1	95-7242	Bearing - Ball	15	58	2
94-6812	Shield	19	65	1	95-7243	Seal-Oil	15	60	1
94-6813	Guard - Chassis R.H.	9	30	1	95-7244	Washer	15	61	1
94-6814	Kit - 3/8 Open Center Tine	4	*	1	95-7245	Shaft & Pinion	15	62	1
94-6815	Bracket - Front	20	13	1	95-7246	Bearing - Needle	15	63	2
94-6816	Bracket - Rear	20	21	1	95-7247	Shaft - Reverse Idler	15	64	1
94-6817	Grommet	18	15	1	95-7248	Spacer - Reverse Idler	15	65	1
94-6819	Clamp-R	18	5	1	95-7249	Idler - Reverse	15	66	1
94-6820	Elbow - Street 45°	18	23	1	95-7250	Gear - Spur (22 Teeth)	15	67	1
94-6821	Clamp - Wire	7	70	1	95-7251	Carrier Asm. - Differential	15	69	1
94-6822	Block - Inboard	4	12	4	95-7252	Carrier Asm. - Differential	15	70	1
94-6823	Kit - 1/4 Open Center Tine	4	*	1	95-7253	Bushing	15	71	2
94-6824	Boot - Terminal	19	52	3	95-7254	Washer - Thrust	15	73	1
94-9108	Wiring Harness - Coring	7	86	1	95-7255	Washer - Thrust	15	74	1
94-9109	Nut - Hex. Keps	18	20	2	95-7256	Race - Thrust	15	76	2
94-9111	Decal - Warning	6	35	1	95-7257	Washer	15	77	2
95-1837	Pin - Groove	21	3	1	217-60	Wheel	10	64	2
95-1841	Bracket - Floating	21	9	1	218-461	Nut - Hex	23	9	1
95-1842	Pin - Adjustment	21	1	1	218-462	Screw - Machine	23	28	6
95-1843	Pin - Actuator	21	6	1	218-573	Fuse - 5 Amp	22	8	1
95-1844	Housing - Live Side	21	5	1	231-119	Tire	10	65	2
95-1845	Plate - Backing	21	7	1	231-126	Tire	9	15	2
95-1902	Handle	25	19	1	232-35	Stem - Valve w/Cap	9	24	4
95-3106	Rod - Connecting	3	23	4	233-13	Knob	11	27	1
95-3107	Rubber Bushing Assembly	3	25	4	233-13	Knob - With Ring	23	11	2
95-3109	Sprocket - 19 Tooth	11	38	2	237-21	O-Ring	11	2	2
95-3111	Chain - Roller	9	40	2	237-21	Seal - O-Ring	23	40	2
95-3124	Bracket - Idler Pulley Pivot	6	53	1	237-22	O-Ring	23	43	2
95-3125	Bracket - Idler R.H.	6	14	1	237-42	O-Ring	26	2	2
95-3126	Bracket - Idler L.H.	6	8	1	237-42	O-Ring	23	29	2
95-7200	Housing - Shift Lever	15	5	1	237-42	O-Ring	12	74	2
95-7201	Rod Asm. - Shift	15	8	1	237-78	O-Ring	23	38	2
95-7202	Spring	15	9	2	237-143	O-Ring	17	33	2
95-7203	Ring - Quad	15	3	1	241-123	Wheel	9	16	2
95-7204	Fork - Shifter	15	11	2	242-50	Nut - Lug	9	1	8
95-7205	Rod - Shifter (3rd & 4th)	15	12	1	249-38	Keeper	1	16	2
95-7206	Rod Asm. - Shift	15	13	1	2412-36	Clamp - Hose	23	42	1
95-7207	Rod - Shift (Low)	15	14	1	2412-108	Clamp - Hose	20	10	1
95-7208	Axle (17-7/8 Long)	15	15	2	2412-108	Clamp - Hose	19	58	1
95-7209	Pin - Roll	15	4	1	2412-110	Clamp	19	57	1
95-7210	Screw - Hex Hd.	15	17	8	2412-131	Clamp-R	17	44	2
95-7211	Gear - Ring	15	19	1	2412-133	R-Clamp	25	24	2
95-7212	Pin - Drive	15	20	1	251-297	Bearing	6	4	6
95-7213	Block - Drive	15	21	2	251-297	Bearing - Ball	9	34	4
95-7214	Pinion - Bevel	15	22	2	251-312	Bearing	3	5	8
95-7215	Shaft & Gear - Brake	15	23	1	251-312	Bearing	6	20	1
95-7216	Pinion Shaft & Bearing	15	25	1	251-313	Bearing	6	31	1
95-7217	Gear Cluster Assembly	15	27	1	252-51	Bearing - Needle	15	26	1
95-7218	Bushing	15	28	3	252-76	Bearing - Thrust	15	68	2
95-7219	Stop - Shifter	15	29	1	252-80	Washer - Thrust	15	16	6
95-7220	Gasket - Case & Cover	15	30	1	252-95	Bearing - Needle	15	59	1

*Not Illustrated

TORO PART NUMBER INDEX (Cont.)

3318-941

Part No.	Description	Pg. Ref. No. No. Qty.	Part No.	Description	Pg. Ref. No. No. Qty.
252-105	Bearing - Roller	9 23 4	324-10	Screw - HH	18 35 2
253-158	Seal - Shaft	9 49 2	325-13	Screw- HH	9 37 2
253-166	Seal	6 38 1	329-6	Screw - HH	18 14 1
254-61	Cup - Bearing	9 7 2	3210-3	Screw - HH	18 38 1
254-62	Cone - Bearing	9 9 1	3211-10	Screw - HH	21 4 2
254-70	Cone - Bearing	9 8 1	3211-12	Screw - HH	18 43 1
254-105	Bearing - Roller	9 44 4	3211-12	Screw-HH	2 1 4
255-5	Ball - Steel	15 10 2	3217-5	Nut - Hex	23 36 4
256-216	Bushing	17 18 2	3217-5	Nut - Hex.	17 31 2
256-301	Bushing	25 11 2	3217-7	Nut	11 53 4
256-312	Bushing	24 62 1	3217-9	Nut-Hex	3 32 8
256-319	Bushing - Split	7 56 2	3217-26	Nut - Jam	6 43 1
2710-16	Chain - Connecting Link	23 34 1	3218-2	Nut - Jam	1 5 1
2710-16	Link - Connecting	9 41 2	3218-2	Nut - Jam	6 10 2
2710-20	Link - Single Pitch	10 66 2	3218-2	Nut - Jam	17 26 1
281-1	Plug - Oil	11 30 1	3218-3	Nut - Jam	11 17 1
281-2	Plug - Pipe	15 75 1	3218-5	Nut - Jam	7 63 2
281-11	Plug - Magnetic Drain	15 52 1	3218-13	Nut - Jam	19 61 2
282-22	Clevis	2 7 4	3219-1	Nut - Hex.	18 13 1
282-22	Yoke	23 5 1	3219-1	Nut - Hex.	12 60 3
282-26	Clevis	25 41 1	3219-3	Nut - Hex.	2 6 4
283-2	Pin - Clevis	23 7 1	3219-14	Nut - Hex.	19 62 2
283-2	Pin - Clevis	2 8 4	3220-1	Nut - Jam	12 59 2
283-2	Pin - Clevis	12 69 1	3220-3	Nut - Jam	23 4 1
283-11	Pin - Clevis	25 23 1	3220-4	Nut - Jam	21 2 1
283-66	Pin - Clevis	25 14 1	3220-7	Nut - Jam	16 15 1
283-66	Pin - Clevis	18 25 1	3220-7	Nut - Jam	9 18 2
283-67	Pin - Clevis	12 70 1	3242-9	Screw - Set, Sq. Head	17 25 1
283-74	Pin - Clevis	11 9 2	3242-9	Screw - Sq. Hd.	6 11 2
283-89	Pin - Clevis	25 1 1	3243-9	Screw - Set, Sq. Hd.	11 55 1
287-13	Link - Connecting	3 13 2	3245-2	Screw - Set	18 2 2
288-10	Cap - Pipe	18 21 1	3245-2	Screw - Set	6 25 1
2811-10	Elbow - Street	11 32 1	3245-33	Screw - Set	12 57 2
302-5	Fitting - Grease	9 17 3	3247-2	Screw - Set	11 42 4
302-5	Fitting - Grease	18 29 1	3247-2	Screw - Set	25 43 1
302-10	Grease Fitting	9 47 2	3252-3	Screw - Machine	25 35 1
302-18	Fitting - Grease	24 71 1	3253-3	Lockwasher	15 18 8
302-22	Fitting - Grease	8 2 1	3253-3	Washer - Lock	20 6 1
321-2	Screw - HH	17 40 1	3253-3	Washer - Lock	11 35 3
321-3	Screw - HH	23 20 1	3253-3	Washer - Lock	23 35 4
321-3	Screw - HH	17 36 2	3253-3	Washer - Lock	17 41 1
321-4	Screw - HH	11 12 2	3253-4	Washer - Lock	6 34 3
321-4	Screw - HH	9 25 2	3253-6	Washer - Lock	11 15 3
321-5	Screw - HH	17 37 1	3253-6	Washer - Lock	18 31 2
321-5	Screw - HH	24 73 1	3253-7	Washer - Lock	5 7 16
321-5	Screw - HH	12 75 2	3253-7	Washer - Lock	3 31 8
321-13	Screw - HH	11 34 3	3253-7	Washer - Lock	9 38 2
321-14	Screw - HH	23 24 4	3253-12	Washer - Lock	7 80 2
321-33	Screw - HH	7 78 2	3253-15	Washer - Lock	23 27 6
322-2	Screw - Cap Hex Hd.	1 4 1	3253-21	Washer - Lock	20 2 2
322-4	Screw - HH	25 48 4	3253-21	Washer - Lock	5 6 16
322-5	Screw - HH	11 43 4	3253-21	Washer - Lock	11 7 8
322-7	Screw - HH	6 32 3	3253-21	Washer - Lock	3 7 52
322-11	Screw - HH	19 53 4	3253-21	Washer - Lock	6 7 9
322-12	Screw - HH	20 16 3	3253-21	Washer - Lock	17 10 1
322-26	Screw - HH	23 19 2	3253-21	Washer - Lock	18 44 2
323-4	Screw - HH	5 5 16	3253-21	Washer - Lock	23 49 4
323-4	Screw - HH	17 11 4	3253-33	Washer - Lock	18 39 1
323-4	Screw - HH	7 66 2	3254-1	Washer - Lock	19 63 2
323-5	Screw - HH	11 41 2	3254-2	Washer - Lock	19 60 2
323-6	Screw - HH	20 1 2	3254-5	Washer - Lock, Int. Tooth	23 8 1
323-6	Screw - HH	11 6 3	3254-8	Washer - Lock, Int. Tooth	17 32 3
323-6	Screw - HH	6 6 2	3254-8	Washer - Lock, Int. Tooth	24 59 1
323-6	Screw - HH	3 37 8	3254-9	Washer - Lock, Int. Tooth	18 10 2
323-7	Screw - HH	24 56 1	3256-2	Washer - Flat	20 19 3
323-7	Screw - HH	7 87 1	3256-2	Washer - Flat	17 47 2
323-10	Screw - HH	11 54 4	3256-4	Washer - Flat	20 3 2
323-11	Screw - HH	3 38 8	3256-4	Washer - Flat	2 2 8
323-12	Screw - HH	17 19 1	3256-4	Washer - Flat	18 41 1
323-20	Screw - HH	6 52 2	3256-6	Washer - Flat	18 46 1
323-25	Screw - HH	6 40 1	3256-14	Washer - Flat	25 32 2
324-4	Screw - HH	18 32 1	3256-21	Washer - Flat	23 26 8

*Not Illustrated

TORO PART NUMBER INDEX (Cont.)

Part No.	Description	Pg. No.	Ref. No.	Qty.	Part No.	Description	Pg. No.	Ref. No.	Qty.
3256-22	Washer - Flat	20	7	1	3296-12	Nut - Lock	23	23	1
3256-22	Washer - Flat	9	26	2	3296-12	Nut - Lock	6	45	2
3256-22	Washer - Flat	17	29	3	3296-13	Nut - Lock	24	66	1
3256-22	Washer - Flat	12	73	1	3296-15	Nut - Lock	9	52	2
3256-23	Washer - Flat	18	40	1	3296-23	Nut - Lock	6	50	8
3256-23	Washer - Flat	25	47	4	3296-29	Nut - Lock	20	20	3
3256-24	Washer - Flat	17	9	3	3296-29	Nut - Lock	25	46	4
3256-24	Washer - Flat	6	39	4	3296-29	Nut - Lock	19	56	4
3256-24	Washer - Flat	18	45	1	3296-39	Nut - Lock	17	17	1
3256-25	Washer - Flat	11	46	1	3296-42	Nut - Lock	11	11	3
3256-26	Washer - Flat	2	12	6	3296-42	Nut - Lock	17	21	1
3256-26	Washer - Flat	23	31	1	3296-42	Nut - Lock	10	54	2
3256-26	Washer - Flat	9	36	2	3296-42	Nut - Lock	24	74	1
3256-26	Washer - Flat	6	51	4	3296-42	Nut - Lock	7	77	2
3256-44	Washer - Flat	3	2	8	3296-45	Nut - Lock	9	5	2
3256-44	Washer - Flat	6	17	2	3296-59	Nut - Lock	7	65	2
3256-53	Washer - Flat	25	10	2	3296-67	Nut - Hex	3	1	8
3256-57	Washer - Flat	20	17	4	3296-67	Nut - Lock	6	16	2
3256-61	Washer - Flat	25	30	2	3296-68	Nut - Lock	9	11	1
3256-69	Washer - Flat	17	4	11	32103-12	Nut - Wing	17	28	2
3257-5	Key	11	33	2	32104-17	Screw - HHST	17	39	1
3269-3	Rivet - Pop	3	33	24	32104-17	Screw - Hex Hd. Self Tap.	25	39	2
3269-4	Rivet - Pop	1	15	4	32105-8	Screw - SHH	7	81	2
3269-4	Rivet - Pop	7	62	4	32105-17	Screw - PPH	25	6	2
3269-8	Rivet - Pop	1	7	4	32111-8	Cap & Locknut	1	6	1
3272-1	Pin - Cotter	18	30	1	32111-8	Nut - Lock, Cap	23	15	2
3272-4	Pin - Cotter	12	72	1	32120-11	Ring - Retaining	6	1	6
3272-6	Pin - Cotter	17	2	1	32120-11	Ring - Retaining	9	32	4
3272-6	Pin - Cotter	2	5	8	32120-22	Ring - Retaining	3	3	16
3272-6	Pin - Cotter	23	6	1	32120-65	Ring - Retaining	16	14	1
3272-6	Pin - Cotter	25	16	1	32121-16	Pin - Roll	17	1	3
3272-10	Pin - Cotter	12	68	1	32121-20	Pin - Roll	11	21	1
3272-12	Pin - Cotter	11	18	2	32121-20	Pin - Roll	15	79	1
3272-13	Pin - Cotter	9	20	4	32121-23	Pin - Roll	23	3	1
3274-7	Screw - HSH	3	10	12	32121-49	Pin - Roll	25	44	1
3274-7	Screw - HSH	6	29	3	32121-90	Pin - Roll	24	68	2
3274-26	Screw - Socket Hd.	11	25	3	32128-19	Nut - Hex. Flange	7	69	3
3274-26	Screw - Socket Hd.	15	78	3	32128-33	Nut - Flange	7	82	2
3274-50	Screw - HSH	3	8	24	32128-33	Nut - Lock	23	18	1
3274-50	Screw - HSH	6	23	4	32136-5	Nut - Hex. Slotted	10	68	2
3274-84	Screw - HSH	20	5	1	32140-29	Screw - Washer Hd.	7	61	4
3289-4	Screw - HSFH	7	79	2	32144-1	Screw - HHST	17	45	2
3290-93	Screw - Pan Head	18	11	2	32144-4	Screw - HHST	19	64	2
3290-126	Screw - Hex Washer Hd.	23	47	1	32144-57	Screw - HHST	17	48	2
3290-224	Washer - Lock, Pyramidal	7	73	2	32144-64	Screw - Hex. Hd. Self Tap	25	29	6
3290-224	Washer - Pyramidal	11	29	1	32144-73	Screw - Hex. Washer Head	7	83	1
3290-224	Washer - Pyramidal	3	45	4	32144-107	Screw - HHST	18	37	4
3290-238	Washer - Pyramidal	11	44	4	32144-112	Screw - Backing Plate	23	2	1
3290-355	Pin - Hair, Cotter	1	12	1	32151-34	Ring - Snap	15	2	1
3290-359	Screw - Machine, Hex. Hd.	6	13	2	32151-54	Ring - Retaining	8	7	1
3290-360	Screw - Hex. Head	6	42	1	32151-77	Ring - Retaining	7	58	2
3290-378	Tie - Cable	7	84	1	32151-84	Ring - Snap	15	24	2
3290-379	Tie - Cable	24	*	2	32153-2	Nut - Lock	6	15	2
3290-379	Tie - Cable	25	18	3	32153-2	Nut - Lock	24	54	1
3290-379	Tie - Cable	11	19	1	32153-2	Nut - Lock	3	26	4
3290-381	Tie - Cable	24	75	2	32153-5	Nut - Lock	23	33	1
3290-381	Tie - Cable	25	17	5	32153-11	Nut - Lock	21	11	2
3290-418	Nut - Push On	25	21	1	340-77	Fitting - 90°	23	44	2
3290-418	Nut - Push On	24	64	1	340-82	Fitting	11	1	2
3296-9	Nut - Lock	25	9	2	340-92	Fitting - Straight	23	39	2
3296-12	Nut - Hex.	25	31	1					

PRODUCT CHANGES

In an effort to make improvements available to TORO owners as quickly as possible, minor changes are incorporated into Toro's products from time to time that do not become immediately shown in the Parts Catalog. If such a change has been made in your unit, which is not reflected in your manual, see your TORO Distributor or his Authorized TORO Service Dealer for information and part numbers.

IDENTIFICATION AND ORDERING

MODEL AND SERIAL NUMBERS

The Greens Aerator traction unit and coring head each have two identification numbers: a model number and a serial number. The two numbers are stamped on a plate which is riveted to each frame member. In any correspondence concerning the Greens Aerator, supply model and serial numbers to assure that correct information and replacement parts are obtained.

To order replacement parts from an Authorized TORO Service Dealer, supply the following information:

1. Model and serial number of the machine.
2. Part number, description, and the quantity of part(s) desired.

NOTE: Do not order by reference number if a parts catalog is being used; use the PART NUMBER.

COUNTRIES OTHER THAN THE UNITED STATES OR CANADA

Customers who have purchased TORO products exported from the United States or Canada should contact their Toro Distributor (Dealer) to obtain guarantee policies for your country, province or state. If for any reason you are dissatisfied

with your Distributor's service or have difficulty obtaining guarantee information, contact the TORO importer. If all other remedies fail, you may contact us at The Toro Company.

TABLE OF CONTENTS

Description	Page	Description	Page
Cover Assembly	1	Battery & Drive Take-up Assembly	17
Turf Guard Assembly	2	Engine, Pulley & Muffler Assembly	18-19
Tine Arm & Crank Assembly	3	Muffler Guard & Fuel Tank Assembly	20
Tine Block & Tine Selection	4	Brake Caliper Assembly No. 76-2590	21
Kit - Spiker 1/4" Model No. 09153 (Optional)	5	Electrical Schematic	22
Coring Head Drive Assembly	6-7	Control Panel Assembly	23-24
Switch Assembly - Coring Head	8	Handle Assembly	25
Chassis Assembly	9-10	Control Valve No. 43-1950	26
Transaxle, Brake & Pump Assembly	11-12	Engine Briggs & Stratton Model 303447	
Pump Assembly No. 44-7800	13	Type 1233-A1	27-37
Transaxle Assembly Model No. 2361A	14-15	TORO Part Number Index	38-42
Hydraulic Cylinder Assembly No. 62-4660	16		

