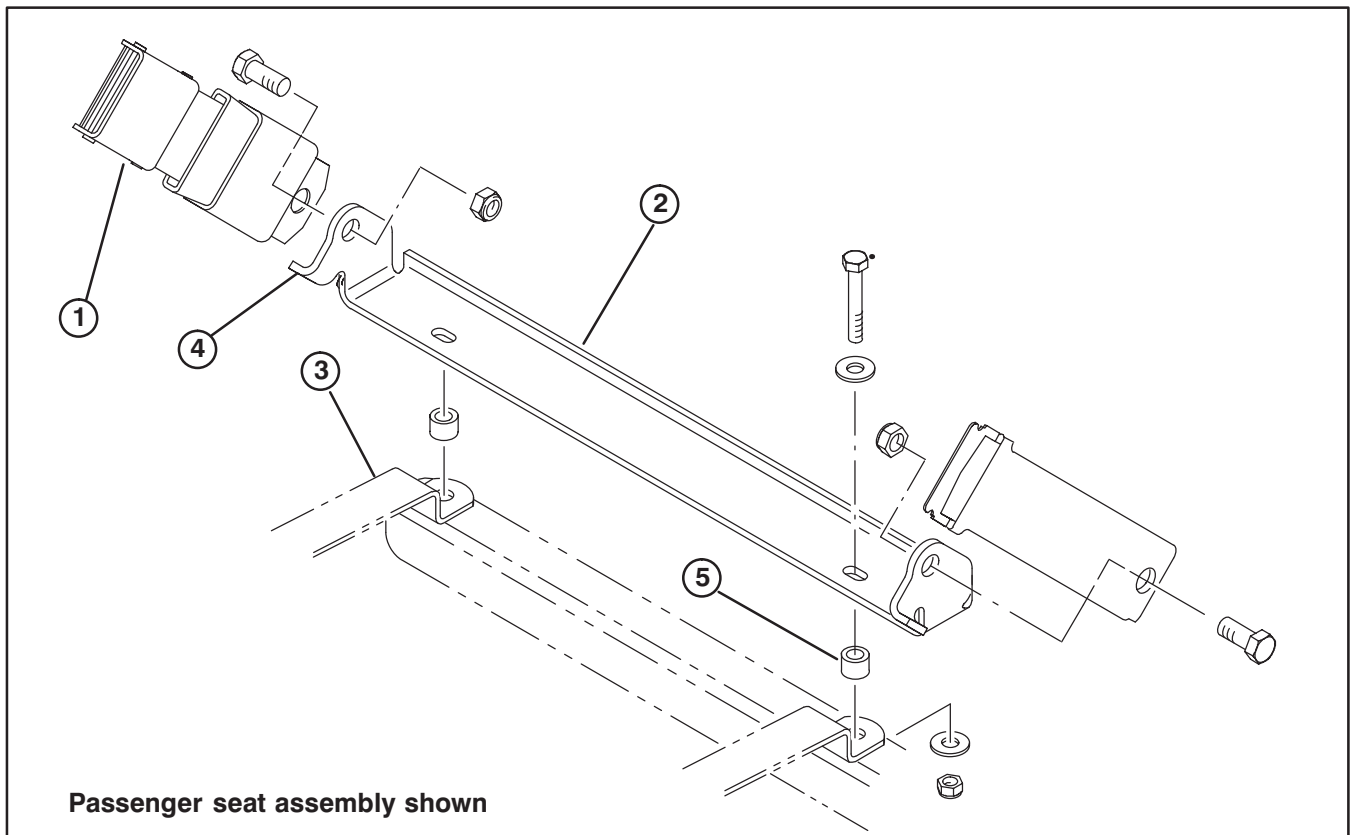


TORO®

PART NO. 92-1295

**INSTALLATION
INSTRUCTIONS****SEAT BELT KIT
For Workman 3000 Series**

1. Remove capscrews and washers securing rear of seat brackets to frame of machine.
2. Secure each end of seat belt assembly to seat belt bracket as shown in figure 1, with a 7/16-20 x 1" lg. capscrew and locknut. Bent tabs on bracket to face forward and seat belt latch to be mounted on end of bracket positioned toward outside of machine. Tighten nuts securely.
3. Mount seat belt bracket to seat brackets and frame with (2) 5/16-18 x 2" lg. capscrews, washers and spacers. Spacers to be positioned between seat belt bracket and seat brackets.
4. Secure assembly to underside of frame with (2) washers and locknuts. Tighten nuts securely.

**Figure 1**

- | | |
|----------------------|-------------|
| 1. Seat belt latch | 4. Bent tab |
| 2. Seat belt bracket | 5. Spacer |
| 3. Seat brackets | |