



Count on it.

Parts Catalog

18in Walk-Behind Aerator

Model No. 23516—Serial No. 313000001 and Up

Model No. 33516—Serial No. 313000001 and Up



Ordering Replacement Parts

To order replacement parts, please supply the part number, the quantity, and the description of each part desired.

Understanding Reference Numbers

Each identified part in an illustration has a reference number. The reference number for a part also appears in the parts list, along with other information about the part.

This catalog uses two special reference number formats, one to indicate parts in a service assembly and another to indicate the quantity of a given part in an illustration.

Service Assembly Reference Numbers

Parts in service assemblies have reference numbers in the form a:b. The a represents the reference number of the entire service assembly and the b represents a sequential number unique to each part within the service assembly.

For example, a wheel assembly might be identified by reference number 6, the tire by 6:1, the valve by 6:2, and the wheel by 6:3. When you order the assembly identified by reference number 6, you receive all parts identified by reference numbers 6:1, 6:2, and 6:3. However, you may also order any part individually. Reference numbers of this type appear in illustration and in parts lists.

Reference Numbers Indicating Quantity

In an illustration, if a reference number indicates more than one part, the reference number has the form nX y. The n represents the quantity of the part, the X is the multiplication symbol, and the y represents the reference number.

For example, in an illustration, the reference number 2X 37 means that two of the parts identified by reference number 37 are indicated.

List of Abbreviations

AR: as required

ASM: assembly

BBC: blade brake control

BHTF: button head thread forming

CARR: carriage

CCW: counter clockwise

CW: clockwise

DEG: degrees

DPA: Dual Point Adjustment

ECM: electronic control module

EXT: external

FH: flat head

GA: gauge

HD: heavy-duty

HF: hex flange

HH: hex head

HHF: hex head flange

HHFTF: hex head flange thread forming

HJ: hex jam

HLH: hex lag head

HOC: height-of-cut

HSBH: hex socket button head

HSFH: hex socket flat head

HSH: hex socket head

HWH: hex washer head

HWHTF: hex washer head thread forming

HYD: hydraulic

LH: left hand

LP: Liquefied Petroleum Gas

LPG: Liquefied Petroleum Gas

NI: nylon insert

NPTF: national pipe thread fine

PFH: phillips flat head

PPH: phillips pan head

PPHTF: phillips pan head thread forming

PRH: phillips round head

PTH: phillips truss head

PTO: power-take-off

RH: right hand

ROPS: roll-over protection system

RRB: rear roller brush

SFH: slotted fillister head

SHH: slotted hex head

SHWH: slotted hex washer head

SPH: slotted pan head

SQH: square head

SRH: slotted round head

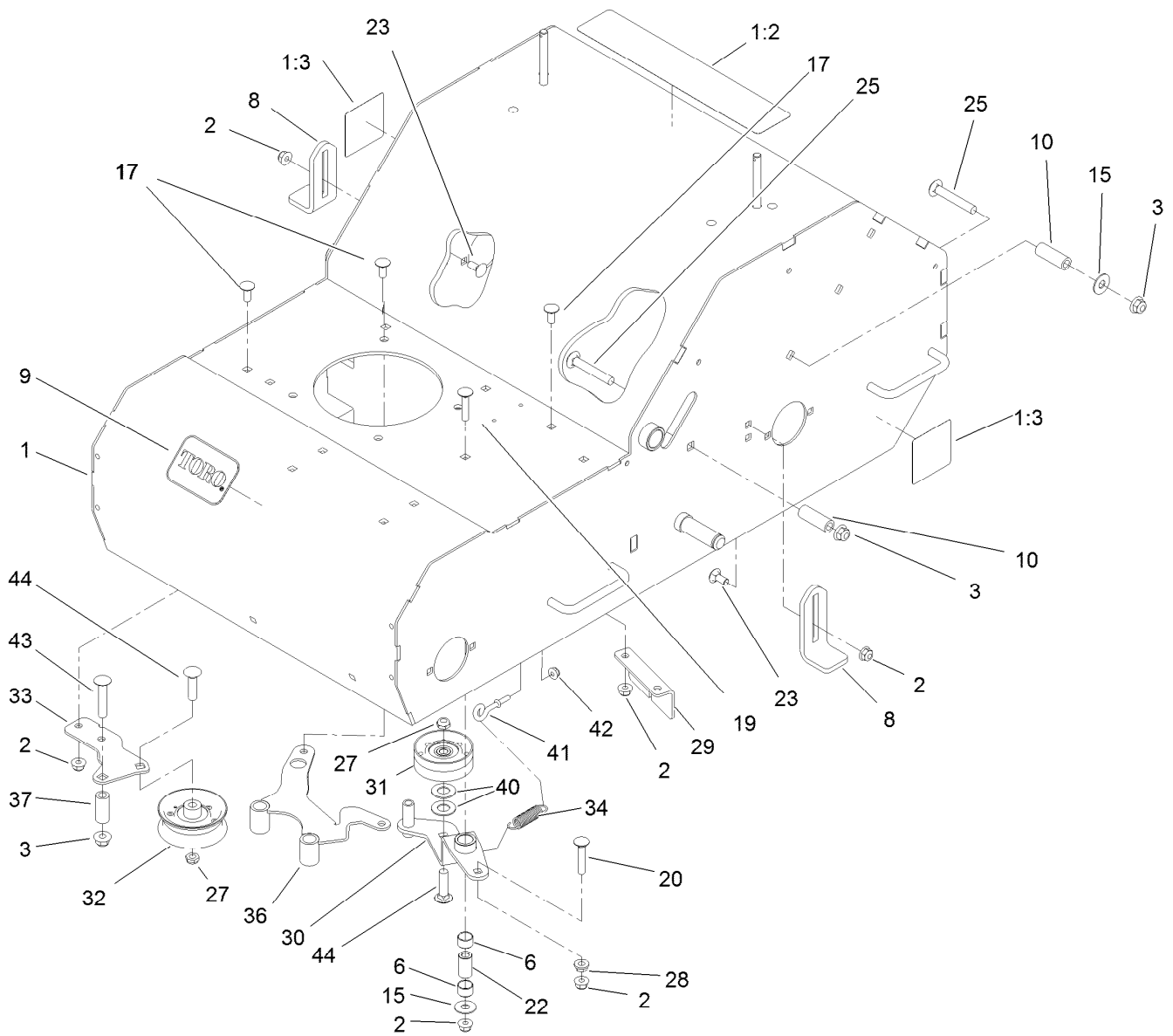
STD: standard

TAP: self tapping

TTH: torx truss head

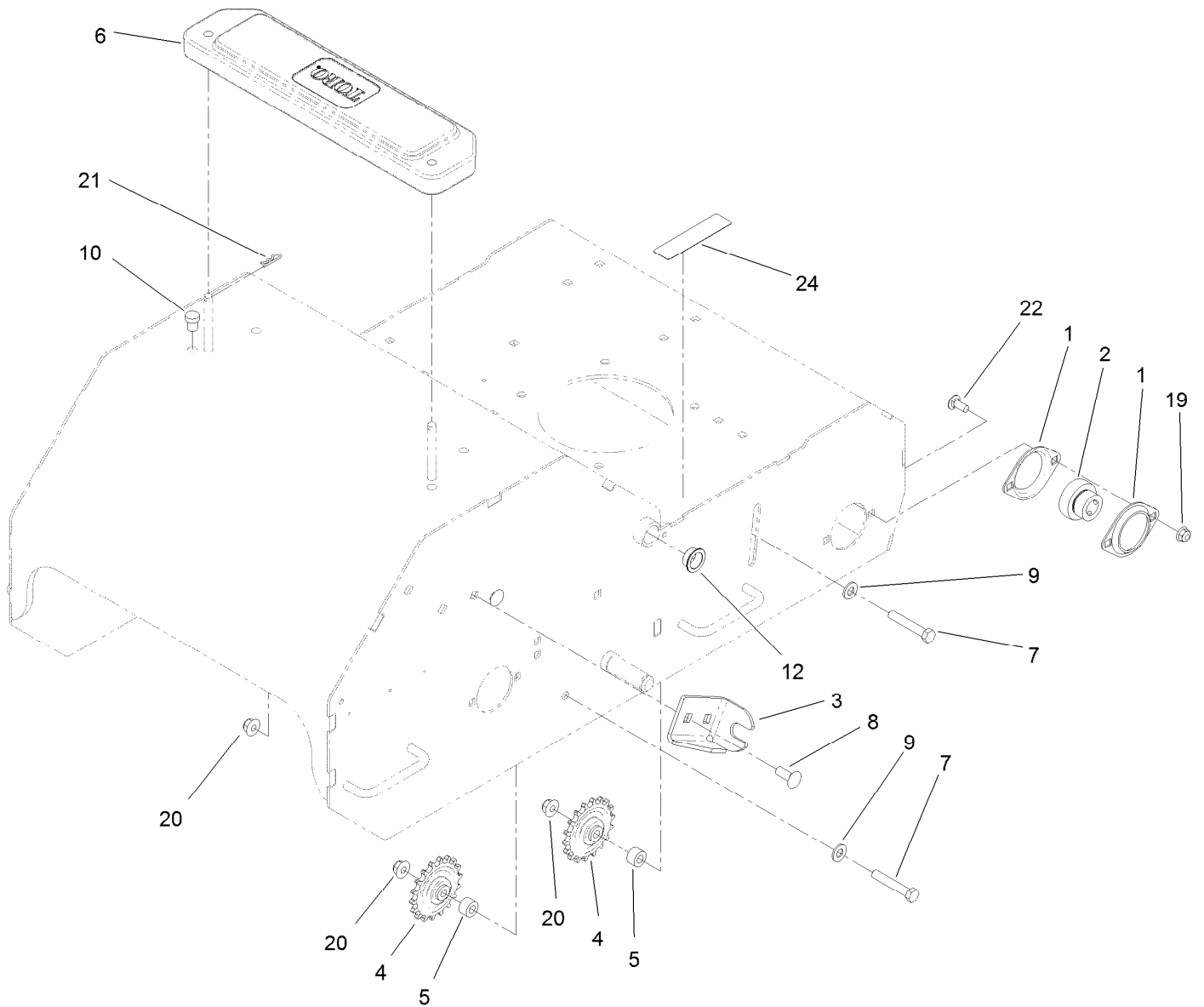
Contents

Frame Assembly.....	4
Idler Sprocket and Weight Assembly.....	5
Engine Assembly.....	6
Transmission and Wheel Assembly.....	7
Handle Assembly.....	8
Wheel Assembly.....	9
Tine Wheel Assembly.....	10



Frame Assembly

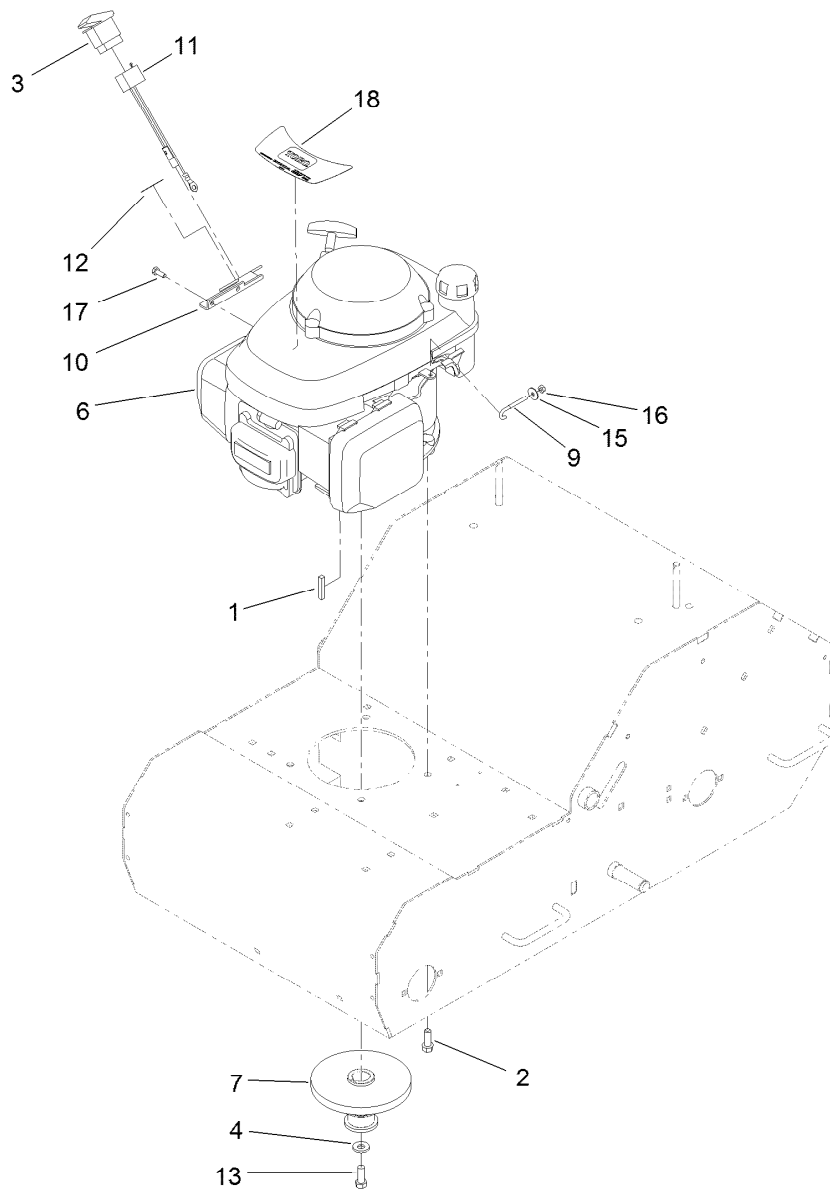
Ref.	Part Number	Qty.	Description	Ref.	Part Number	Qty.	Description
1	125-3855	1	Frame ASM	27	3296-59	2	Nut-Lock, NI
1:2	121-2009	1	Decal-Warning, Aerator	28	32128-20	1	Nut-HF
1:3	121-6150	2	Decal-Warning	29	125-3941-03	1	Bracket-Mount, Cable
2	104-8300	10	Nut-Flange, NI	30	127-4047-03	1	Arm-Idler
3	104-8301	7	Nut-Flange, NI	31	116-6361	1	Pulley
6	103-6111	2	Bearing	32	1-323285	1	Pulley-Idler, Flat
8	121-4871	2	Stop-Depth	33	127-4053-03	1	Bracket-Mount, Pulley
9	70-2200	1	Decal	34	121-4409	1	Spring-Extension
10	95-6448	3	Spacer	36	127-4063-03	1	Guide-Belt
15	1126	2	Washer-Flat	37	104-0151	1	Spacer
17	3230-23	6	Screw-CARR	40	117-1240	2	Washer
19	3230-4	1	Screw-CARR	41	611243	1	Bolt-Eye
20	3230-5	1	Screw-CARR	42	104-7201	1	Nut-HF
22	103-7108	1	Bushing-Arm, Idler	43	117-9971	1	Bolt-Carriage
23	3230-1	4	Bolt-CARR	44	3231-26	2	Screw-CARR
25	3231-44	3	Screw-CARR				



Idler Sprocket and Weight Assembly

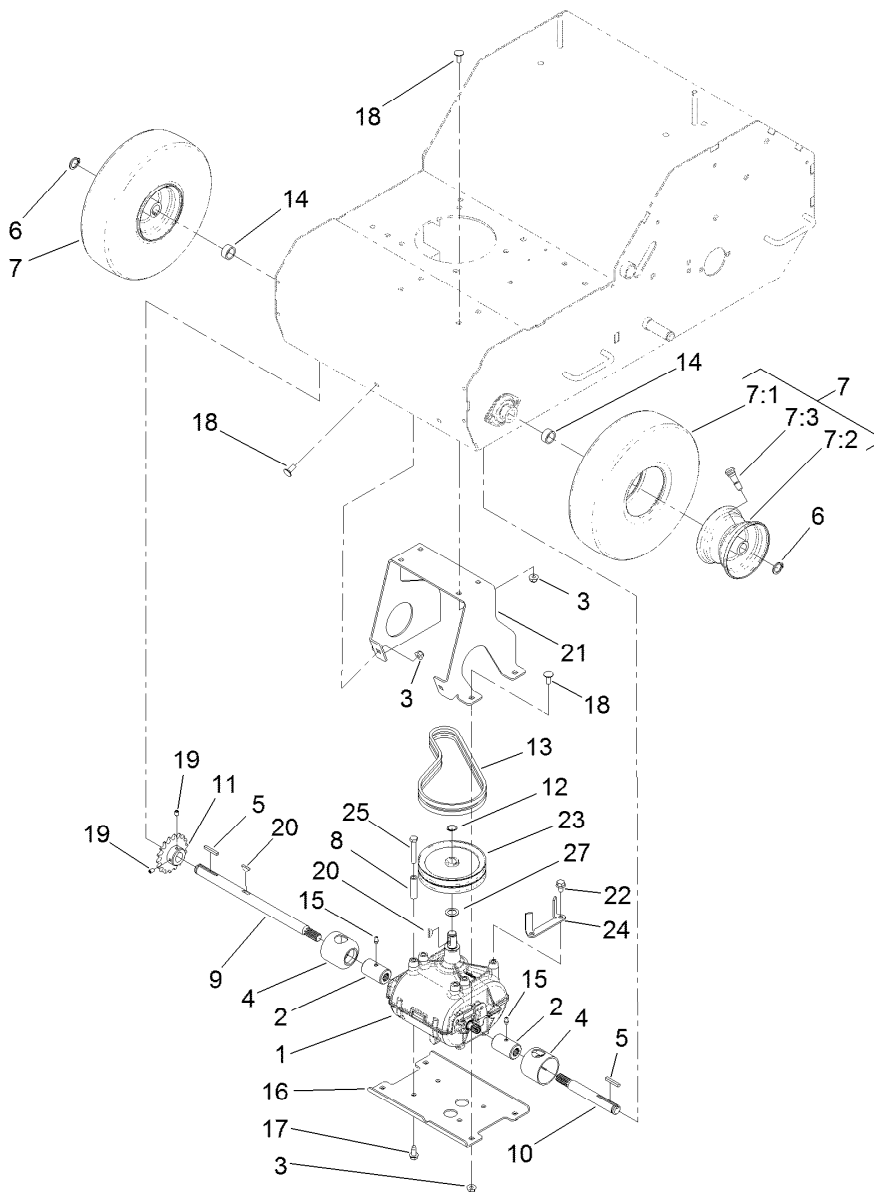
<i>Ref.</i>	<i>Part Number</i>	<i>Qty.</i>	<i>Description</i>
1	105-9714	4	Flange-Bearing
2	120-9350	2	Bearing-Lock, Collar
3	121-4880	1	Bracket-Mount, Cable
4	121-4915	2	Sprocket-Idler
5	121-4916	2	Spacer-Sprocket
6	112-7059-01	2	Weight-Cast
7	323-11	2	Screw-HH
8	3231-22	2	Screw-CARR

<i>Ref.</i>	<i>Part Number</i>	<i>Qty.</i>	<i>Description</i>
9	3256-24	2	Washer-Flat
10	105-4740	4	Bumper-Rubber
12	108519	2	Bushing-Bronze
19	104-8300	4	Nut-Flange, NI
20	104-8301	4	Nut-Flange, NI
21	3290-307	2	Pin-Hair
22	3230-23	4	Screw-CARR
24	117-2718	1	Decal-Arrester, Spark



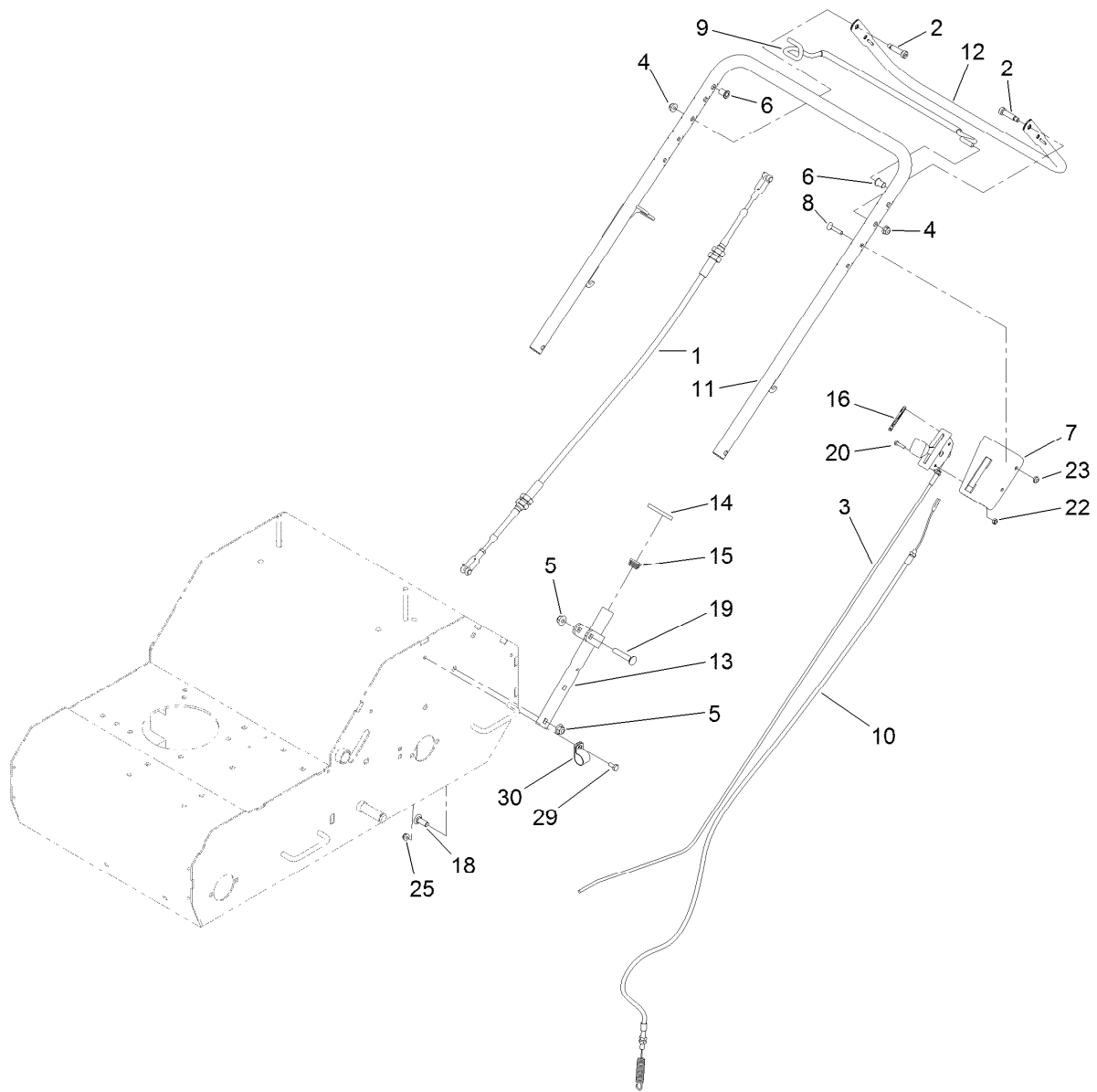
Engine Assembly

Ref.	Part Number	Qty.	Description
1	67-7490	1	Key-Square
2	95-1726	4	Screw-Taptite
3	95-8999	1	Switch
4	98-5975	1	Washer-Belleville
6	112-8771	1	Engine-Honda, Gsv190La A3T
7	127-4039	1	Pulley-Engine, Double
9	121-6186	1	Hook-Override
10	121-6200-03	1	Bracket-Switch
11	121-6201	1	Harness-Wire
12	121-6229	1	Decal-On/Off
13	3211-4	1	Screw-HH
15	3256-61	1	Washer-Flat
16	3296-2	1	Nut-Lock, NI
17	33113-016	2	Screw-HH
18	117-5245	1	Decal-Engine



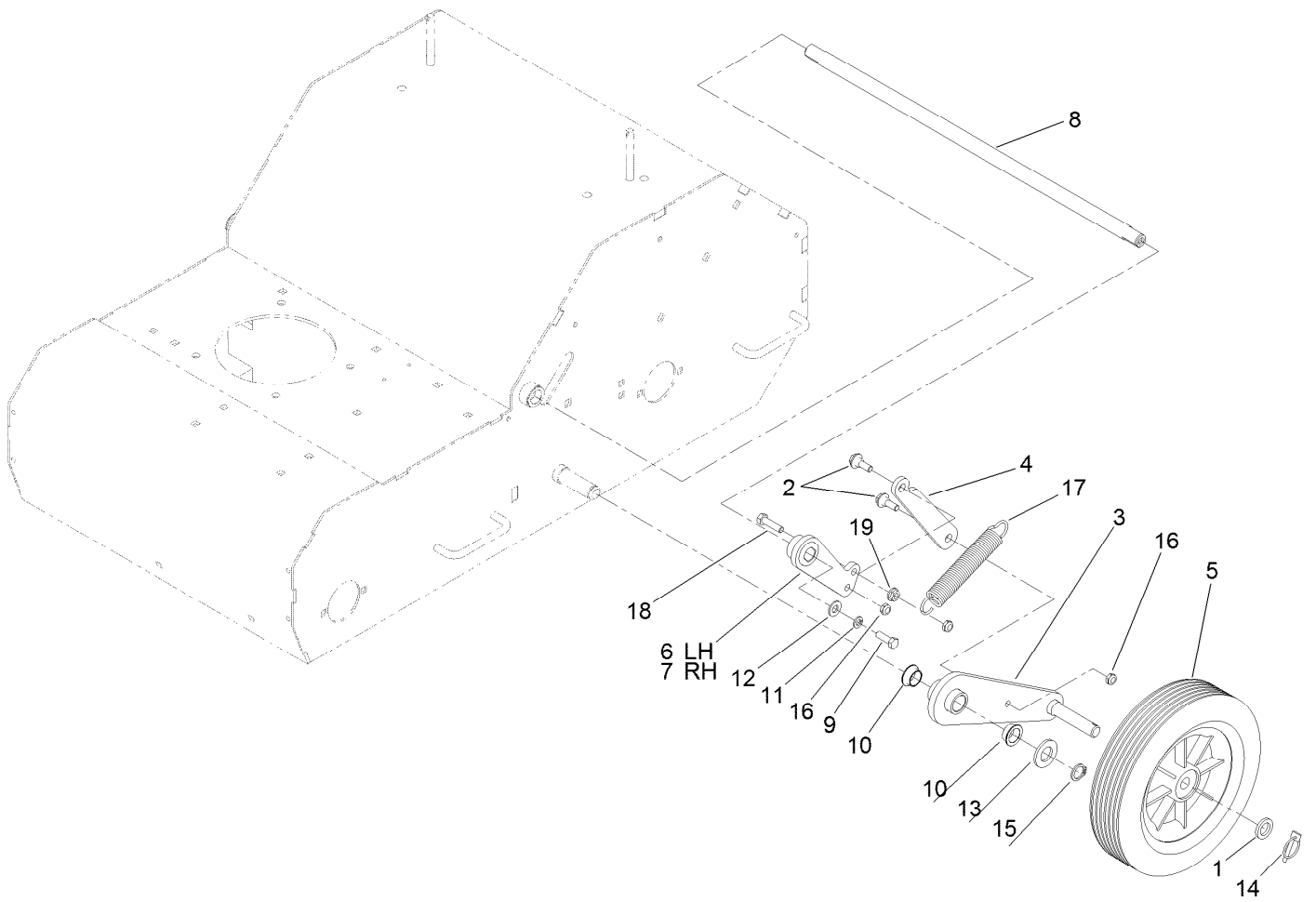
Transmission and Wheel Assembly

Ref.	Part Number	Qty.	Description	Ref.	Part Number	Qty.	Description
1	120-3695	1	Transmission	13	121-4907	2	Belt-V, Traction
2	1-323680	2	Coupler	14	121-2045	2	Spacer-Wheel
3	104-8300	10	Nut-Flange, NI	15	302-19	2	Fitting-Grease
4	51-4220	2	Guard-Coupler	16	125-3823-03	1	Mount-Transmission, Lower
5	92-2649	2	Key-Square	17	9264964	4	Screw-HWH, Thread Cut
6	32120-93	2	Ring-Retaining	18	3230-23	10	Screw-CARR
7	120-3550	2	Wheel ASM	19	3245-41	2	Screw-HSH
7:1	121-6081	1	Tire	20	3257-5	2	Key-Woodruff
7:2	121-6082	1	Wheel-Rim	21	125-3938-03	1	Channel-Mount, Transmission
7:3	5108	1	Valve	22	3234-30	2	Screw-HHF
8	95-6327	1	Spacer	23	127-4003	1	Sheave-Gearbox ASM
9	121-4878	1	Shaft-Transmission	24	125-3928-03	1	Guide-Belt
10	121-4879	1	Shaft-Transmission	25	322-10	1	Screw-HH
11	121-4901	1	Sprocket, #40 18T	27	108-0015	1	Washer-Flat
12	32120-64	1	Ring-Snap, External				



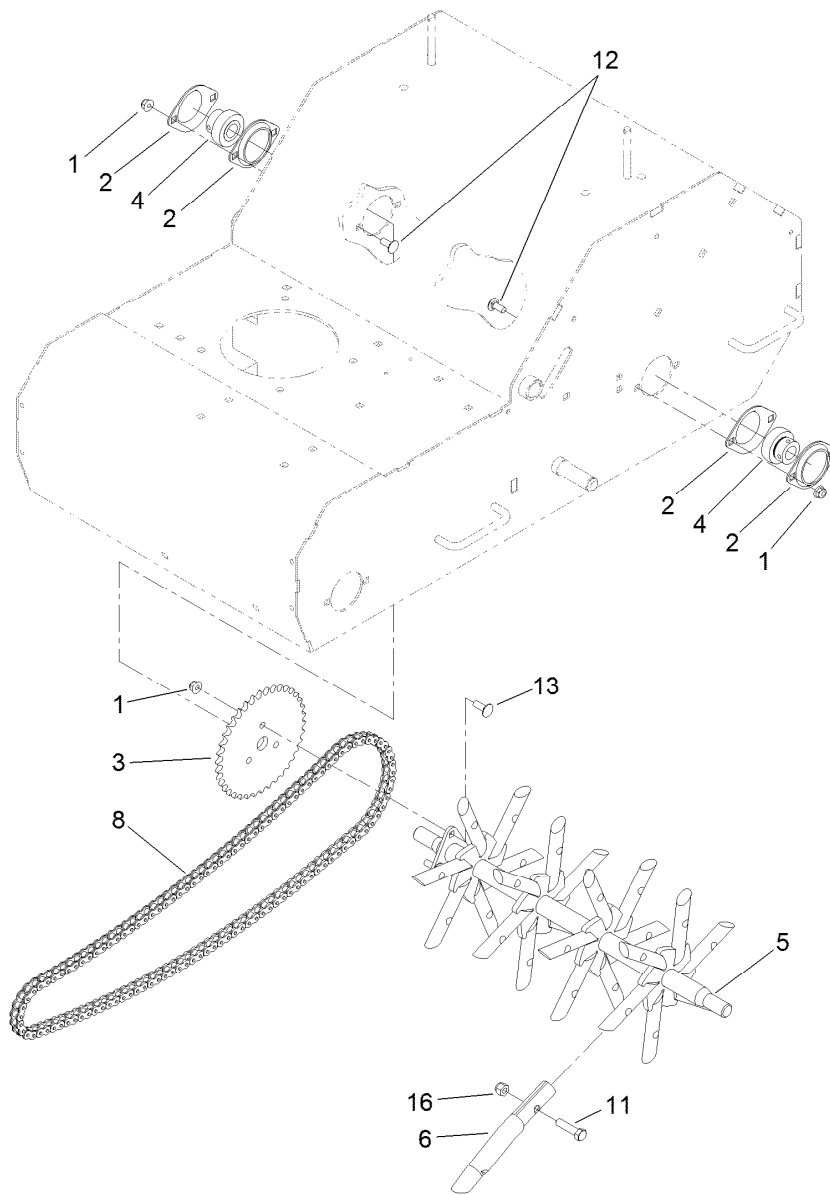
Handle Assembly

<i>Ref.</i>	<i>Part Number</i>	<i>Qty.</i>	<i>Description</i>	<i>Ref.</i>	<i>Part Number</i>	<i>Qty.</i>	<i>Description</i>
1	121-6230	1	Cable-Push/Pull	13	121-4866-03	2	Mount-Handle
2	65-9340	2	Bolt-Shoulder	14	121-6202	2	Ring-Handle Lock
3	103-6123	1	Control-Throttle	15	121-4870	2	Plug
4	104-8300	2	Nut-Flange, NI	16	121-6222	1	Decal-Throttle/Choke
5	104-8301	6	Nut-Flange, NI	18	3231-22	4	Screw-CARR
6	109-2713	2	Bushing	19	3231-6	2	Screw-CARR
7	127-4058-03	1	Bracket-Throttle	20	3250-27	2	Screw-PPH
8	109-8144	3	Bolt-Handle	22	3296-2	2	Nut-Lock, NI
9	127-4054	1	Bail-Traction	23	3296-56	2	Nut-Lock, NI
10	121-4860	1	Cable-Idler	25	104-7201	1	Nut-HF
11	121-4862-03	1	Handle	29	321-3	1	Screw-HH
12	125-3854-03	1	Tube-Lift Handle	30	2412-41	1	Clamp



Wheel Assembly

Ref.	Part Number	Qty.	Description	Ref.	Part Number	Qty.	Description
1	63-9710	2	Spacer-Bearing	11	3253-4	2	Washer-Lock
2	116-2670	4	Screw-Shoulder	12	3256-24	2	Washer-Flat
3	121-4886-03	2	Arm-Wheel	13	3256-28	2	Washer-Flat
4	121-6212-03	2	Link-Connecting	14	3290-495	2	Pin-Klik
5	121-4897	2	Wheel-Transport	15	32120-93	2	Ring-Retaining
6	125-3758-03	1	Hub-Lift, LH	16	3296-47	5	Nut-Lock, NI
7	125-3759-03	1	Hub-Lift, RH	17	125-3786	1	Spring-Extension
8	125-3856	1	Shaft-Pivot	18	322-6	1	Screw-HH
9	322-5	2	Screw-HH	19	32128-20	1	Nut-HF
10	108519	4	Bushing-Bronze				



Tine Wheel Assembly

Ref.	Part Number	Qty.	Description
1	104-8300	7	Nut-Flange, NI
2	105-9714	4	Flange-Bearing
3	121-6224	1	Sprocket
4	120-9350	2	Bearing-Lock, Collar
5	125-3852-01	1	Wheel-Tine
6	121-4894	24	Tine-Coring
8	121-4914	1	Chain
11	323-8	24	Screw-HH
12	3230-23	4	Screw-CARR
13	3230-10	3	Screw-CARR
16	3296-39	24	Nut-Lock, NI

Notes:



Count on it.