



Count on it.

Parts Catalog

**Ultra Sonic Boom™ Leveling Kit
2010 and After Multi-Pro® Turf Sprayers and
Workman® 200 Spray System**

Model No. 41218—Serial No. 312000001 and Up



Ordering Replacement Parts

To order replacement parts, please supply the part number, the quantity, and the description of each part desired.

Understanding Reference Numbers

Each identified part in an illustration has a reference number. The reference number for a part also appears in the parts list, along with other information about the part.

This catalog uses two special reference number formats, one to indicate parts in a service assembly and another to indicate the quantity of a given part in an illustration.

Service Assembly Reference Numbers

Parts in service assemblies have reference numbers in the form a:b. The a represents the reference number of the entire service assembly and the b represents a sequential number unique to each part within the service assembly.

For example, a wheel assembly might be identified by reference number 6, the tire by 6:1, the valve by 6:2, and the wheel by 6:3. When you order the assembly identified by reference number 6, you receive all parts identified by reference numbers 6:1, 6:2, and 6:3. However, you may also order any part individually. Reference numbers of this type appear in illustration and in parts lists.

Reference Numbers Indicating Quantity

In an illustration, if a reference number indicates more than one part, the reference number has the form nX y. The n represents the quantity of the part, the X is the multiplication symbol, and the y represents the reference number.

For example, in an illustration, the reference number 2X 37 means that two of the parts identified by reference number 37 are indicated.

List of Abbreviations

AR: as required

ASM: assembly

BBC: blade brake control

BHTF: button head thread forming

CARR: carriage

CCW: counter clockwise

CW: clockwise

DEG: degrees

DPA: Dual Point Adjustment

ECM: electronic control module

EXT: external

FH: flat head

GA: gauge

HD: heavy-duty

HF: hex flange

HH: hex head

HHF: hex head flange

HHFTF: hex head flange thread forming

HJ: hex jam

HLH: hex lag head

HOC: height-of-cut

HSBH: hex socket button head

HSFH: hex socket flat head

HSH: hex socket head

HWH: hex washer head

HWTF: hex washer head thread forming

HYD: hydraulic

LH: left hand

LPG: Liquid Propane Gas

NI: nylon insert

NPTF: national pipe thread fine

PFH: phillips flat head

PPH: phillips pan head

PPHTF: phillips pan head thread forming

PRH: phillips round head

PTH: phillips truss head

PTO: power-take-off

RH: right hand

ROPS: roll-over protection system

RRB: rear roller brush

SFH: slotted fillister head

SHH: slotted hex head

SHWH: slotted hex washer head

SPH: slotted pan head

SQH: square head

SRH: slotted round head

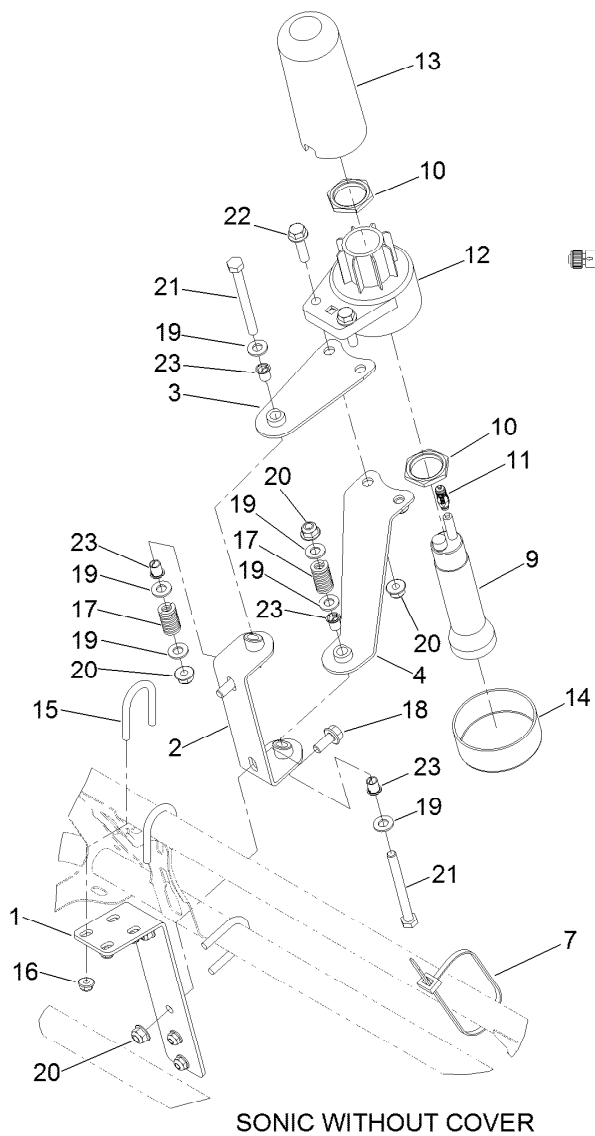
STD: standard

TAP: self tapping

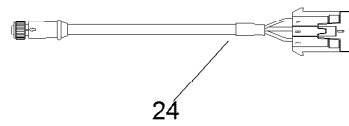
TTH: torx truss head

Contents

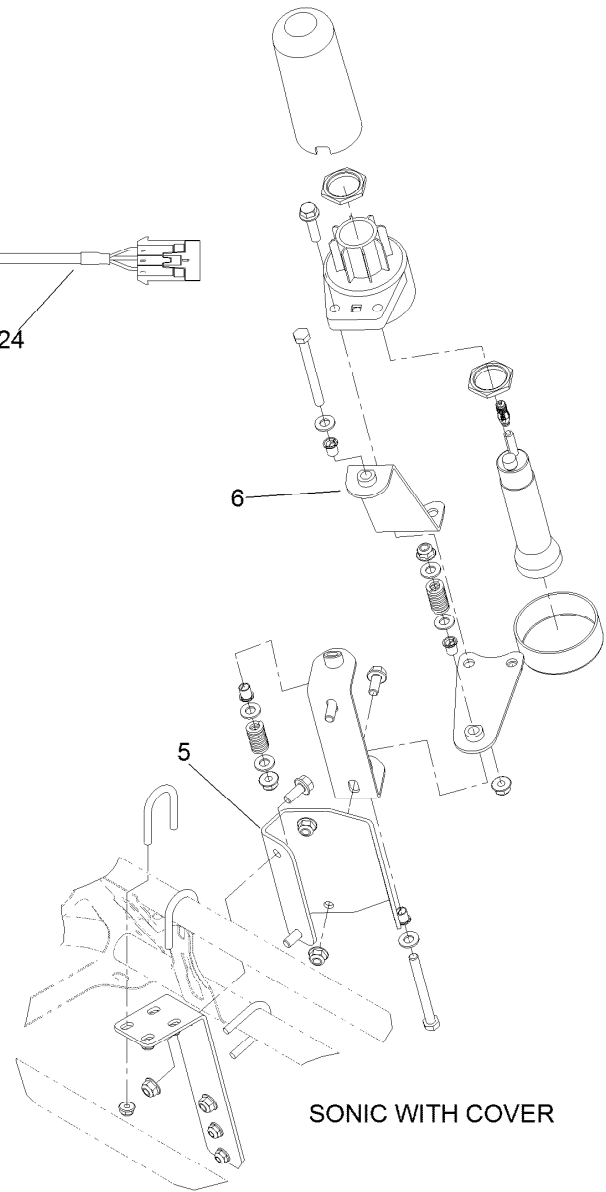
Sonic Sensor Assembly 4
Workman Electronic Control Assembly..... 5
Multi-Pro Electronic Control Assembly 6



SONIC WITHOUT COVER



24

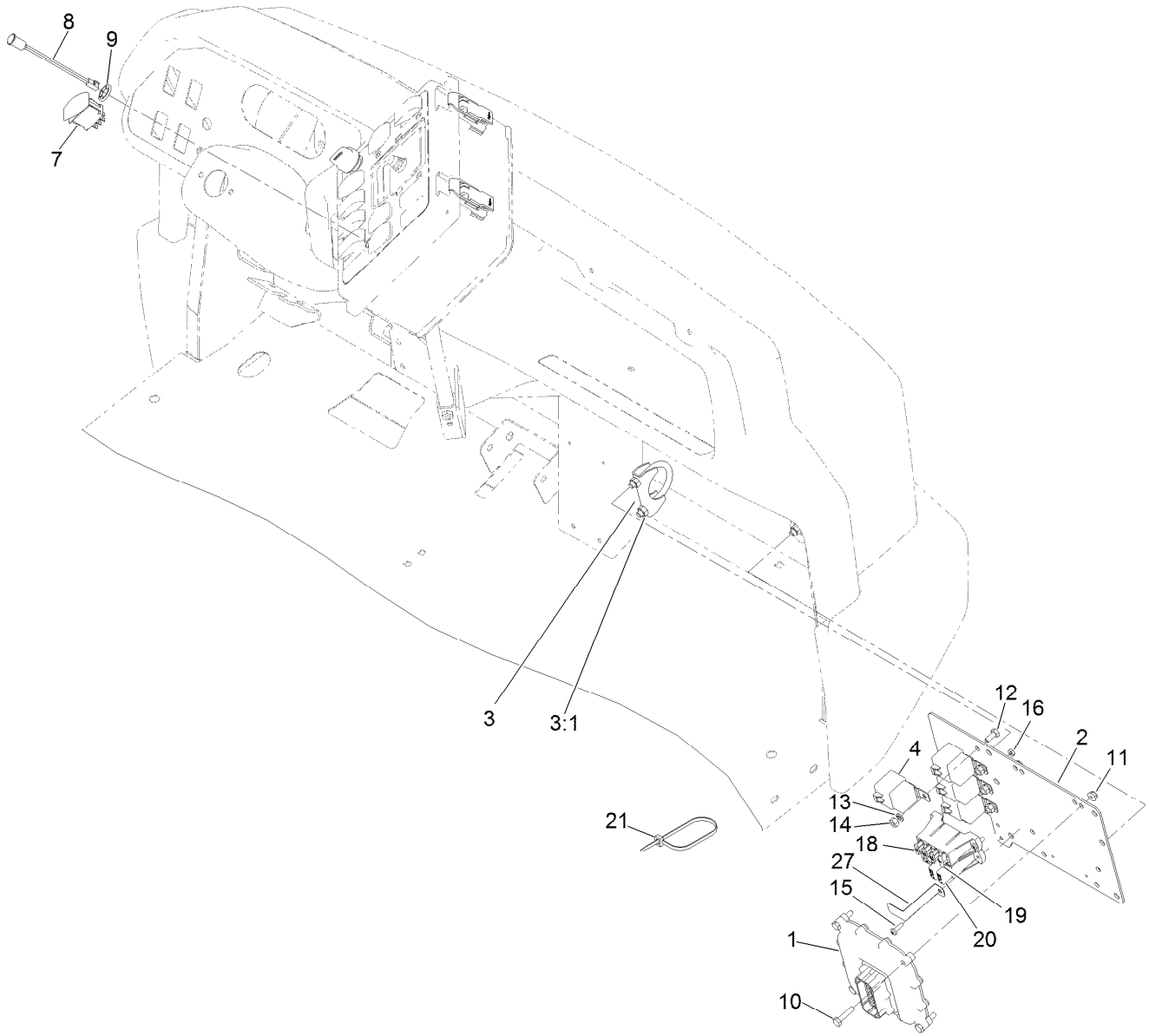


SONIC WITH COVER

Sonic Sensor Assembly

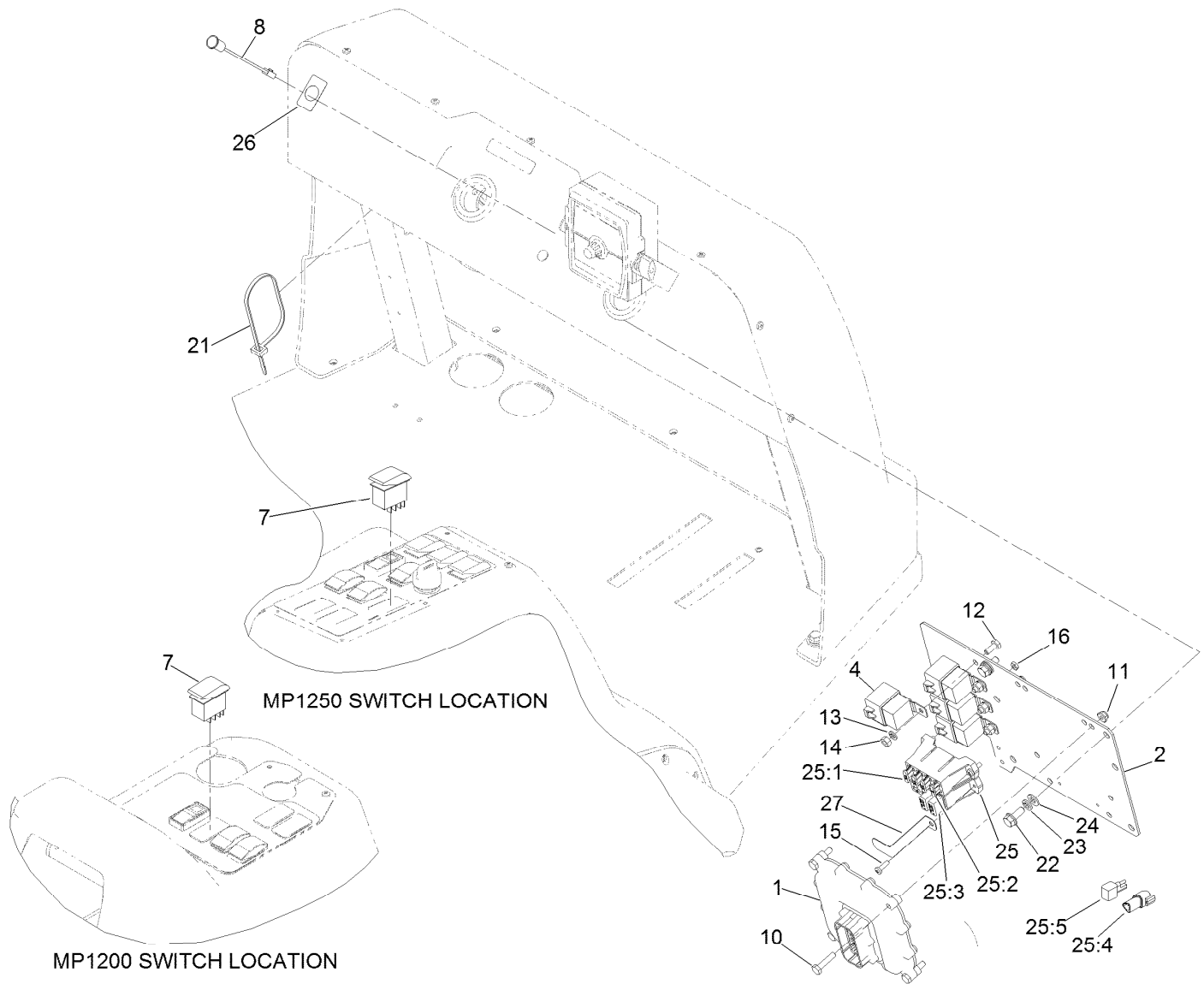
Ref.	Part Number	Qty.	Description
1	120-8589-03	2	Bracket-Tube
2	120-0608-03	2	Hinge ASM
3	120-0611-03	2	Strap ASM
4	120-0613-03	2	Strap ASM
5	120-0757-03	2	Bracket-Tube
6	120-0799-03	2	Strap ASM
7	3290-378	12	Tie-Cable
9	117-8114	2	Sensor-Sonic
10	120-0647	4	Nut
11	120-0648	2	Plug-Programming
12	120-0646	2	Housing-Lower, Ultrasonic Sensor
13	120-0645	2	Cover-Sensor, Ultrasonic

Ref.	Part Number	Qty.	Description
14	120-0772	2	Cap-Tube
15	92-0010	6	U-Bolt
16	104-7201	12	Nut-HF
17	110-5331	4	Spring-Compression
18	3234-47	8	Screw-HHF
19	3256-23	12	Washer-Flat
20	104-8300	18	Nut-Flange, NI
21	322-20	4	Screw-HH
22	3234-36	4	Screw-HHF
23	120-0761	8	Bushing
24	117-8115	2	Cable-Ultrasonic Sensor, 4 Meter



Workman Electronic Control Assembly

<i>Ref.</i>	<i>Part Number</i>	<i>Qty.</i>	<i>Description</i>	<i>Ref.</i>	<i>Part Number</i>	<i>Qty.</i>	<i>Description</i>
1	114-3321	1	Controller-Tec	12	321-3	4	Screw-HH
2	94-8564-03	1	Plate-Mount, Ecu	13	3253-3	4	Washer-Lock
3	2112-6	2	Clamp-Muffler	14	3217-5	4	Nut-Hex
3:1	3218-2	2	Nut-Jam	15	3290-500	4	Screw-PPH
4	99-7430	4	Relay	16	3217-26	4	Nut-Hex
7	100-8490	1	Switch-Rocker	18	114241	3	Fuse-Blade, 7.5 Amp
8	95-7652	1	Light-Indicator	19	94-6710	1	Fuse-2 Amp
9	1-323142	1	Nut-Push	20	95-3287	2	Breaker-Circuit, 30A
10	321-7	4	Screw-HH	21	3290-378	10	Tie-Cable
11	104-7201	4	Nut-HF	27	121-4995	1	Tab-Fuse Retainer



Multi-Pro Electronic Control Assembly

<i>Ref.</i>	<i>Part Number</i>	<i>Qty.</i>	<i>Description</i>	<i>Ref.</i>	<i>Part Number</i>	<i>Qty.</i>	<i>Description</i>
1	114-3321	1	Controller-Tec	21	3290-378	10	Tie-Cable
2	94-8564-03	1	Plate-Mount, Ecu	22	3234-47	2	Screw-HHF
4	99-7430	4	Relay	23	3253-4	2	Washer-Lock
7	100-8490	1	Switch-Rocker	24	3256-23	2	Washer-Flat
8	95-7652	1	Light-Indicator	25	119-5795	1	Harness-Wire, Sonic Boom
10	321-7	4	Screw-HH	25:1	114241	3	Fuse-Blade, 7.5 Amp
11	104-7201	4	Nut-HF	25:2	94-6710	1	Fuse-2 Amp
12	321-3	4	Screw-HH	25:3	95-3287	2	Breaker-Circuit, 30A
13	3253-3	4	Washer-Lock	25:4	32180-043	2	Resistor-120 Ohm
14	3217-5	4	Nut-Hex	25:5	108-9493	2	Diode-Tvs
15	3290-500	4	Screw-PPH	26	94-8582	1	Decal
16	3217-26	4	Nut-Hex	27	121-4995	1	Tab-Fuse Retainer

Notes:



Count on it.