



Low-Drag Bearing and Reel Upgrade Kit

DPA Cutting Reel for Greensmaster® Mower

Model No. 121-9560

Model No. 121-9565

Model No. 121-9570

Model No. 121-9575

Installation Instructions

Loose Parts

Use the chart below to verify that all parts have been shipped.

Description	Qty.	Use
Reel assembly	1	Assemble the reel.
Right reel nut assembly	1	
Left reel nut assembly	1	
Sealed bearing	2	
Flocked washer	2	
Spring washer	1	
Spacer ring	1	

Assembling the Reel

8. Install the cutting unit on the traction unit; refer to the *Traction Unit Operator's Manual*.

⚠ CAUTION

The reel blades are sharp and can cut you.

Wear work gloves when handling the reel.

1. Remove the cutting unit from the traction unit; refer to the *Traction Unit Operator's Manual*.
2. Remove the existing reel assembly from the cutting unit; refer to the *Traction Unit Service Manual*.
3. On the right side of the new reel (Figure 1), install a flocked washer, sealed bearing, and the right reel nut assembly.

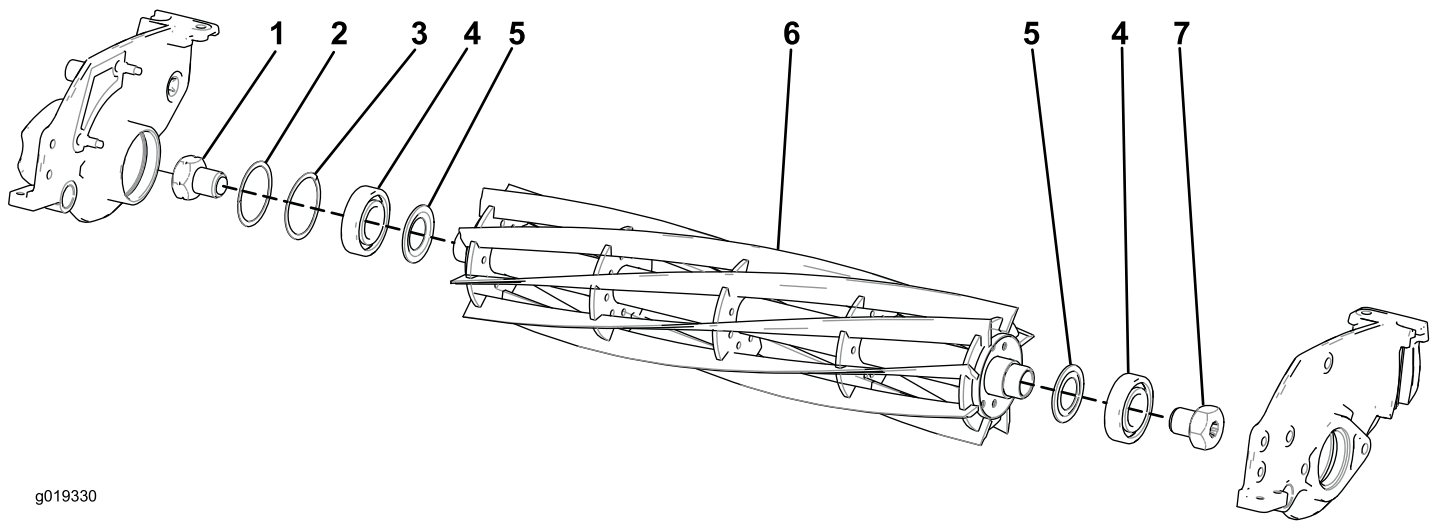
Important: Ensure that the metal side of the flocked washer is against the reel and the flocked side is against the bearing.

4. On the left side of the new reel (Figure 1), install a flocked washer, sealed bearing, and the right reel nut assembly.

Important: Ensure that the metal side of the flocked washer is against the reel and the flocked side is against the bearing.

5. Torque the reel nuts to 100 ft-lb (136 N-m).
6. Install the spacer ring and spring washer into the bearing housing in the left side-plate (Figure 1).
7. Install the new reel assembly into the cutting unit; refer to the *Traction Unit Service Manual*.





g019330

Figure 1

- | | | | |
|---------------------------|-------------------|-------------------|----------------------------|
| 1. Left reel nut assembly | 3. Spring washer | 5. Flocked washer | 7. Right reel nut assembly |
| 2. Spacer ring | 4. Sealed bearing | 6. Reel assembly | |
-