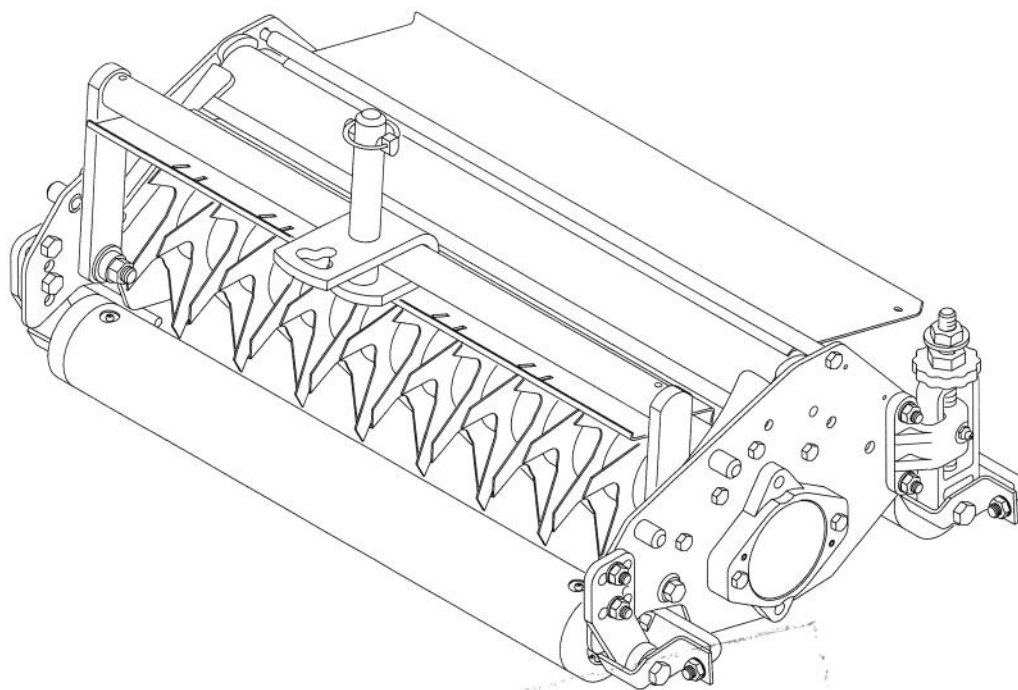




MODEL NO. 03870

OPERATOR'S
MANUAL

DETHATCHING CUTTING UNIT
Reelmaster® 6500D & 6700D



SPECIFICATIONS

Reel Construction: Blades and spacers bolted to square shaft.

Dethatching Range: Up to 1/4" deep blade penetration.

Reel Diameter: 7 in.

Power: Hydraulic motor splined to reel shaft.

Reel Bearings: Self aligning, roller ball type with cast housing and eccentric collar lock with setscrew.

Roller Adjustment: Front—Fixed, Rear—Positive adjustment knob.

ADJUSTING DETHATCHING REEL

Important: Read this Operator's Manual thoroughly before operating the dethatching unit. Failure to do so may result in damage to the dethatching reel.

LEVELING ROLLERS (Fig. 1)

1. Place the dethatcher reel on a level surface.
2. Make sure front roller is mounted in the top set of mounting holes in side plates and rear roller is adjusted to highest position.
3. Loosen nuts securing front roller brackets to side plates.
4. Push rearward on roller, hold mounting capscrews stationary and tighten nuts. Do not turn capscrews, doing so may alter roller adjustment.
5. Place a gauge bar under dethatcher reel blades. Be sure bar covers full length of dethatcher reel blades.

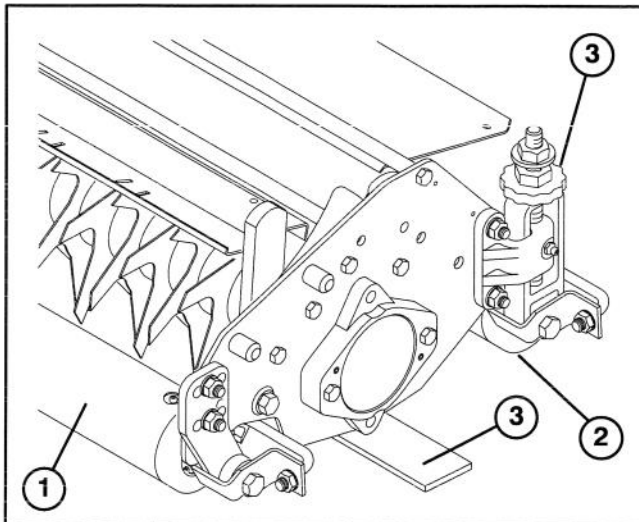


Figure 1

1. Front roller
2. Rear roller
3. Gauge bar
4. Adjusting knob

6. Rotate adjusting knobs on rear H.O.C. brackets so rear roller bracket raises or lowers. Both front and rear rollers must be in contact with the flat surface and each end of reel blades must rest on the gauge bar.

2

ADJUSTING DETHATCHER BLADE DEPTH (Fig. 2)

Note: Maximum recommended setting is 1/4" deep blade penetration.

1. Place the dethatcher reel on a level surface.
2. Make sure front roller is mounted in the top set of mounting holes in side plates.
3. Place (2) gauge bars, which have the desired depth of blade penetration below ground, under the front and rear rollers of the dethatcher reel.

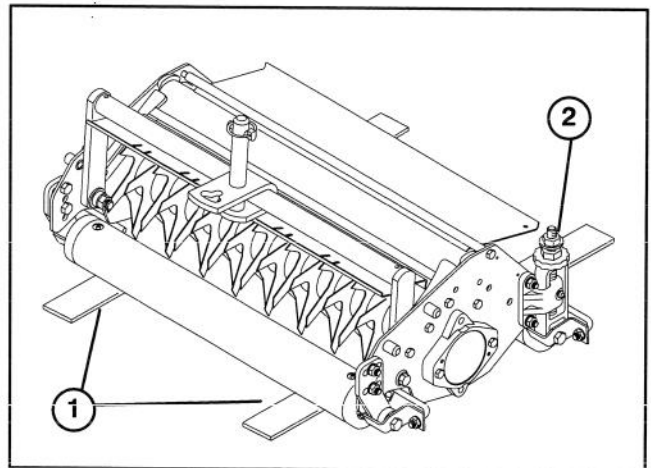


Figure 2

1. Gauge bar
2. Adjusting knob

4. Turn the adjusting knob on each H.O.C. bracket so the dethatcher reel blades come in contact with the level surface on both ends.

Note: As the dethatcher blades wear, the diameter of the reel will decrease and the depth setting will change. Check height setting periodically to insure desired setting is achieved.

ADJUSTING FRONT GRASS SHIELD (Fig. 3)

1. Loosen capscrew on right side of dethatcher reel, securing front grass shield pivot.
2. Rotate top of front grass shield to desired height and tighten capscrew.
3. Rotate the dethatcher blades to insure the blades do not contact or interfere with the shield.

ADJUSTING DETHATCHING REEL

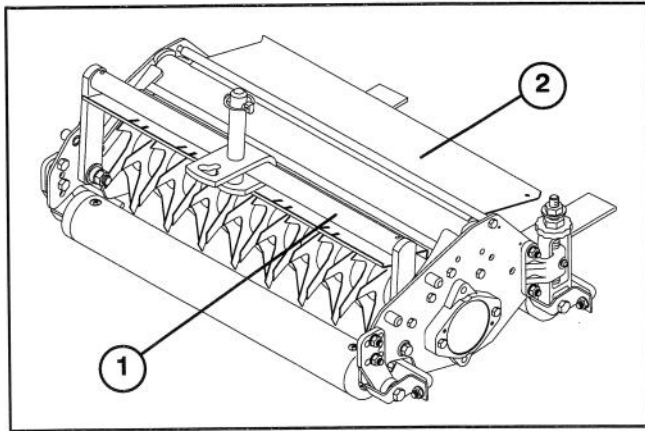


Figure 3

1. Front grass shield
2. Rear grass shield

ADJUSTING REAR GRASS SHIELD (Fig. 3)

Note: When operating in turf conditions where much debris is encountered, or unusually heavy thatch, open the rear discharge shield to help allow the debris to discharge from the reel.

1. Loosen the capscrew on the left side of the dethatcher reel, located on the pivot of the rear grass shield.
2. Rotate the rear grass shield to the desired setting and tighten the capscrew.

ADJUSTING ROLLER SCRAPERS (Fig. 4)

1. Thread jamnuts, on scraper rods, in or out to attain .060" clearance between scraper and roller.

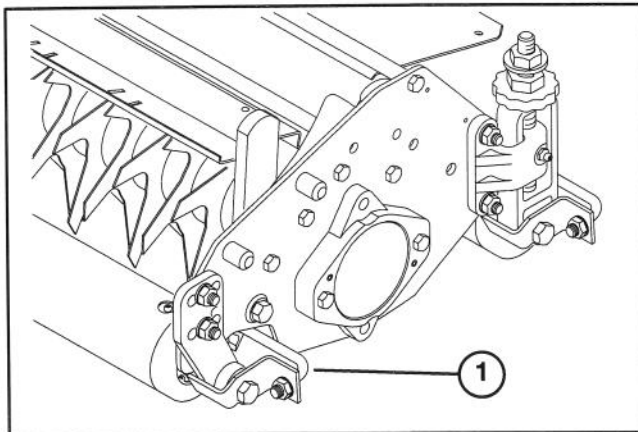


Figure 4

1. Front roller scraper

2. Assure scraper rod is parallel to roller and level surface.

Note: Adjust scraper to desired position to meet turf conditions.

INSTALL DETHATCHER UNITS (Fig. 5–8)

Important: When lowering dethatcher reels, care must be taken to prevent damage to the reel blades due to contact with a concrete floor or a paved surface.

Dethatcher units can be installed at any of the five or seven mounting locations on the traction unit. Figure 5 shows the orientation of the hydraulic drive motor for each of the locations. For any of the locations requiring the motor to be mounted on the right end of the cutting unit, install a counter weight on the left end of the cutting unit. For the locations requiring the motor to be mounted on the left end, install a counter weight on the right end of the cutting unit.

Dethatcher units do not use speed sensors. Secure (2) speed sensor assemblies to lift arms with cable ties.

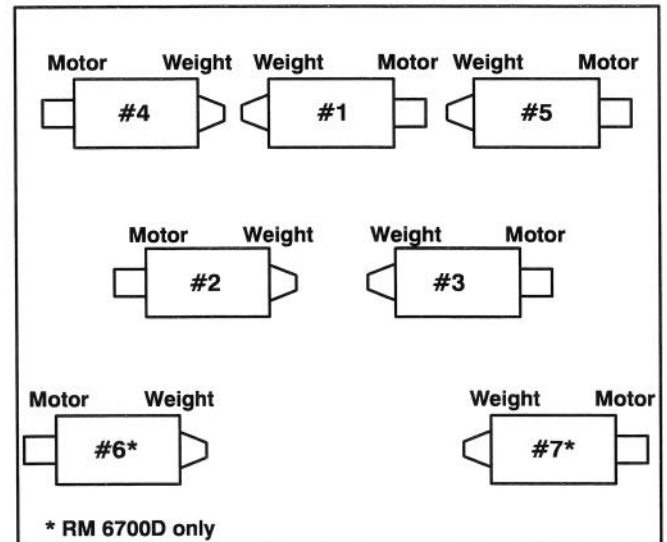


Figure 5

Note: Counter weights are shipped installed to right end of the dethatching units. The capscrews on left end are to be used for securing the hydraulic motor.

3. Remove protective plug from left end of cutting unit.
4. Lubricate and install a large O-ring into bearing housing groove on each end of dethatcher unit (Fig. 6 & 8).

Note: Before installing motors or counterweights, lubricate internal splines of dethatcher unit reels shafts with grease.

5. Install a counter weight onto appropriate end of each cutting unit with capscrews provided (Fig. 6).

ADJUSTING DETHATCHING REEL

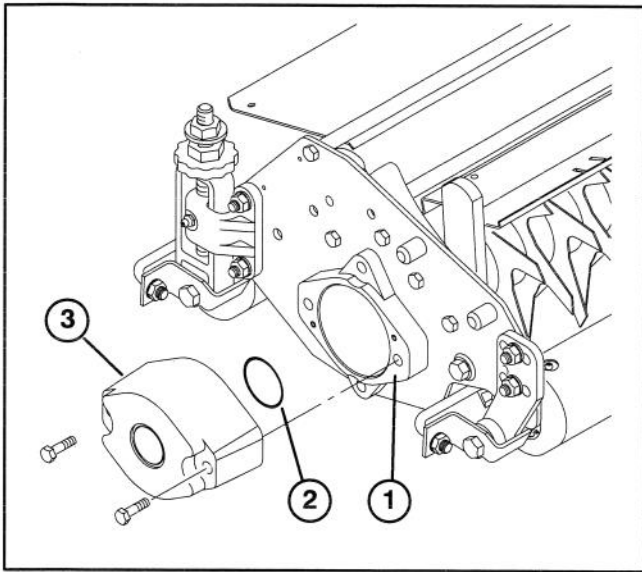


Figure 6

- 1. Bearing housing
- 2. O-ring-large
- 3. Counterweight

6. Insert the pivot shaft of the carrier frame into the mounting hole at the end of the pivot knuckle (Fig. 7).

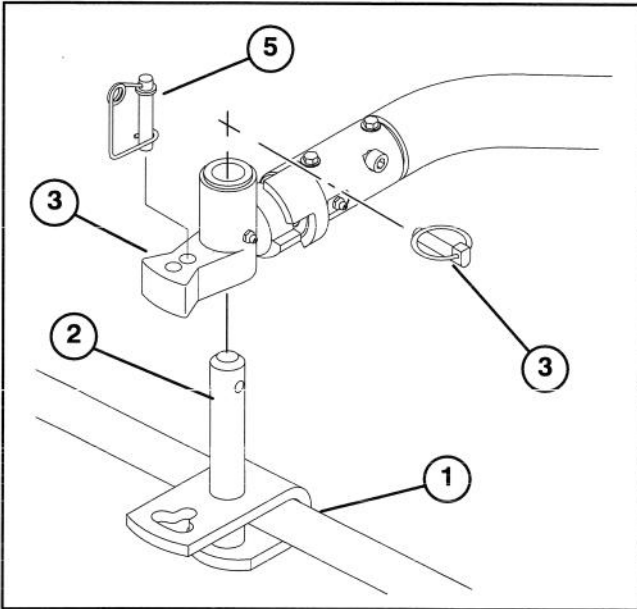


Figure 7

- 1. Carrier frame
- 2. Pivot shaft
- 3. Pivot knuckle
- 3. Lynch pin
- 4. Steering pin

7. Insert lynch pin into cross hole on pivot shaft (Fig. 7).

8. Mount motor to drive end of the cutting unit and secure with two capscrews provided (Fig. 8).

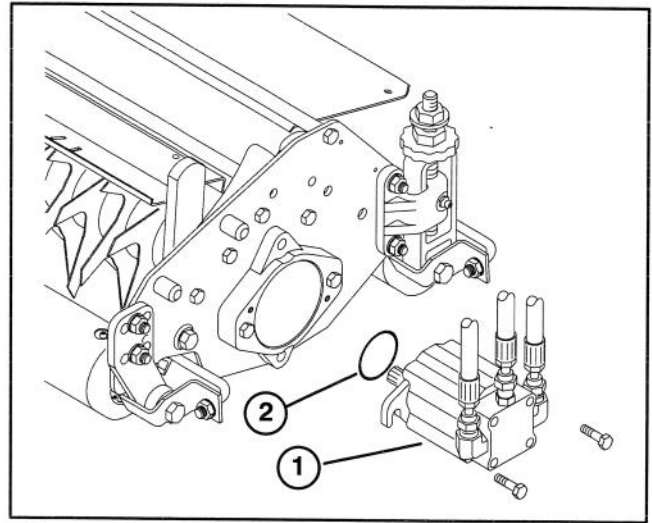


Figure 8

- 1. Motor
- 2. O-ring

9. On front center and left rear cutting units, secure speed sensor wire harness to traction unit lift arm with a cable tie.

10. Insert steering pin into front mounting hole on pivot knuckle (Fig. 7). Rear mounting hole is not recommended for dethatcher use.

11. Hook wire around bottom of pin.

OPERATION

TRAINING PERIOD

Before operating the dethatching reels on a fairway, evaluate the performance of the dethatcher at the desired setting. Operate in a clear, unused area to determine if the desired results will be achieved. Adjust the dethatcher if a change is desired.

OPERATING TIPS

1. Operate the traction unit at full throttle and between 3–5 MPH.

3. Maximum setting on the dethatcher blades 1/4" deep penetration.

4. Power requirements to operate the dethatcher units will vary with turf and soil conditions. Travel speed may need to be reduced in some conditions.

MAINTENANCE

LUBRICATION

Each cutting unit has (8) grease fittings that must be lubricated regularly with No. 2 General Purpose Lithium Base Grease.

1. The grease fitting locations and quantities are: reel bearings (2), front and rear rollers (2 ea.) and H.O.C. brackets (2).

IMPORTANT: Lubricating cutting units immediately after washing helps purge water out of bearings and increases bearing life.

1. Wipe each grease fitting with a clean rag.
2. Apply grease until pressure is felt against handle.

IMPORTANT: Do not apply too much pressure or grease seals will be permanently damaged.

3. Wipe excess grease away.

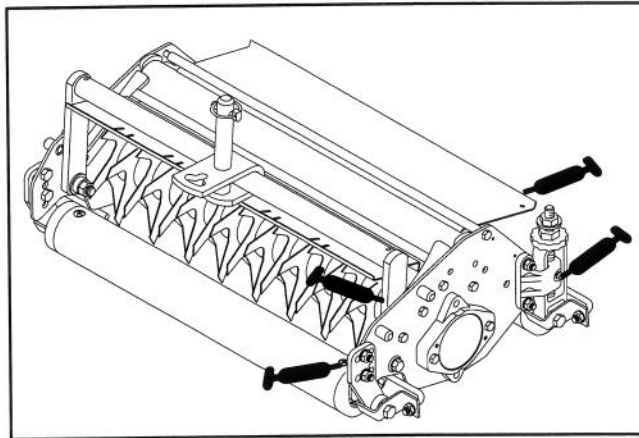


Figure 9

REMOVING DETHATCHER REEL (Fig. 10)

1. Remove (2) capscrews securing counterweight to sideplate of dethatcher. Remove counterweight.
2. Remove (2) capscrews securing reel motor to bearing housing on drive end of dethatcher. Remove reel motor.
3. Remove the setscrews from the locking collars on the reel bearings.

4. With a drive pin and hammer, loosen the locking collars by driving the locking collar in direction opposite to normal rotation.

5. Remove (2) capscrews securing each bearing housing to ends of dethatcher and remove bearing housings.

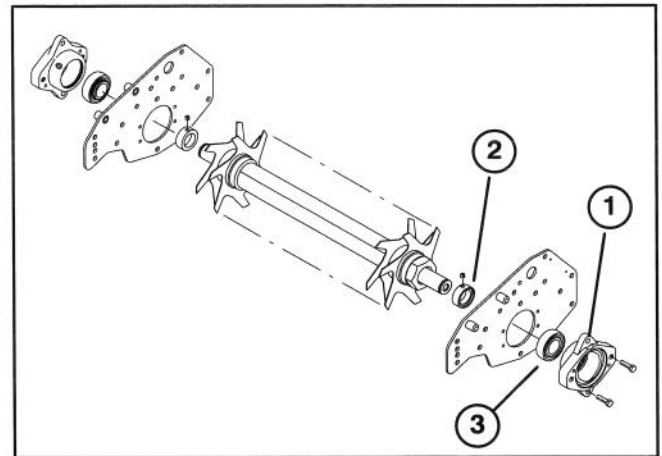


Figure 10

1. Bearing housing
2. Locking collar
3. Bearing

6. Carefully pull the dethatching reel assembly out of frame assembly along with the (2) locking collars.

REMOVING DETHATCHER BLADES FROM SHAFT (Fig. 11)

1. Secure end of dethatcher shaft, opposite nut, in a vise.
2. On other end of shaft, rotate nut counter-clockwise. Remove nut.



CAUTION

Use caution when removing blades from shaft as they are extremely sharp and may have burrs that will cut your hands.

MAINTENANCE

3. Remove cupped end spacer, blades and spacers. Clean and lubricate square shaft with a light coating of grease to simplify assembly.

IMPORTANT: Do not invert dethatching reel blades. The order of disassembly is extremely important. Do not invert dethatching reel blades when disassembling or reverse the order when assembling. Note the thatcher blades index hole. The index hole is provided for assembly in order to obtain the proper helix for the dethatching reel.

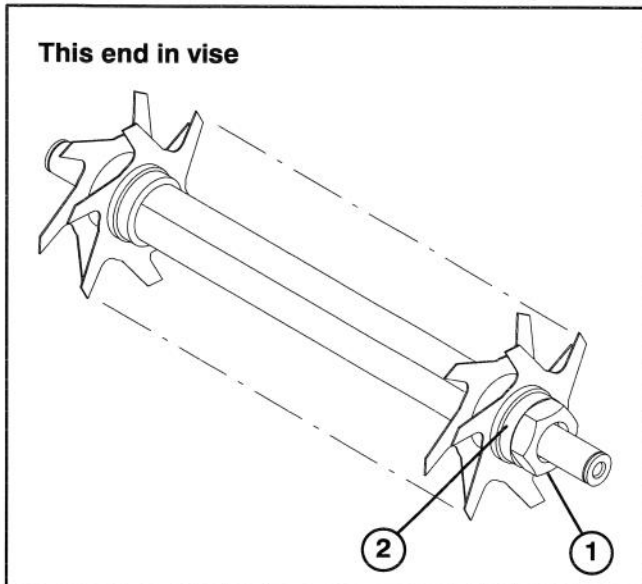


Figure 11

1. Nut
2. Cupped end spacer

INSTALLING DETHATCHER BLADES (Fig. 11)

1. First, assemble a reel dethatcher blade.
2. Next, assemble a 1 in. and a 1/4 in. spacer.
3. Do not invert dethatcher reel blades when reassembling on reel shaft. If the blades are inverted, the blades that are in use, (rounded) will be mixed with the sharp ends of the blades which were not in use. This will cause unsatisfactory performance in the dethatcher reel unit. Attention should always be taken when disassembling dethatching blades from reel.
4. Install the next blade counter-clockwise so the index reference hole is not aligned with the first blade

hole by one flat of the shaft. Continue to install spacers and blades in this manner until the full complement of blades ave been installed. When properly assembled, the blades will be staggered in such a manner to give a helix appearance.

5. Install cupped end spacer to shaft (flat end outward) (Fig. 11).

6. Apply Blue Loctite #242 to nut, install nut on shaft and tighten to 80 – 100 ft-lb.

ASSEMBLE DETHATCHER REEL (Fig. 12)

1. Slide the reel bearing locking collars onto the reel shaft with the locking collars facing inward and not tightened.

2. Place dethatcher shaft assembly into frame assembly. Through side plates, slide a bearing housing onto each end of dethatcher shaft. Secure bearing housings to sideplates with capscrews previously removed. Tighten capscrews to 170–220 in-lbs.

3. Position the reel shaft assembly so the end of shaft is .43 inward from the outside surface of bearing housing.

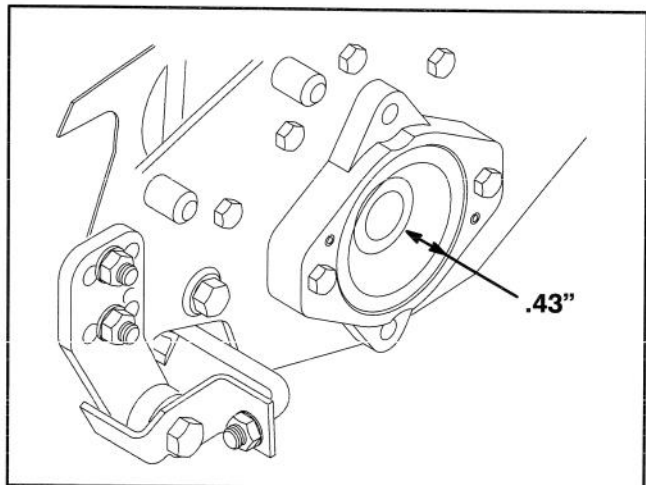


Figure 12

4. Use a drive pin and hammer to tighten the locking collars on the reel shaft bearings. Tighten in direction of rotation. Tighten setscrews.

OPTIONAL BLADE CONFIGURATIONS

The dethatching reel is shipped from the factory with 1-1/4" spacing between blades. A kit is available for other spacing options per reel, if desired. Configurations are shown below.

1" Spacing, Kit Part No. 93-4346 – Includes (4) Blades (part no. 93-3038), (15) 1/4" Thick Spacers (part no. 94-2720) and (4) 1" Thick Spacers (part no. 93-3092) (Fig. 13).

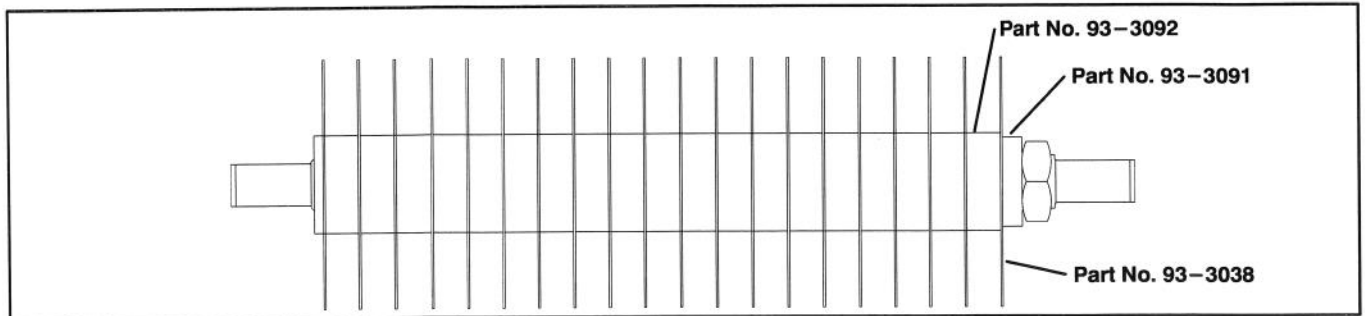


Figure 13

1-1/4" Spacing (Standard) (Fig. 14).

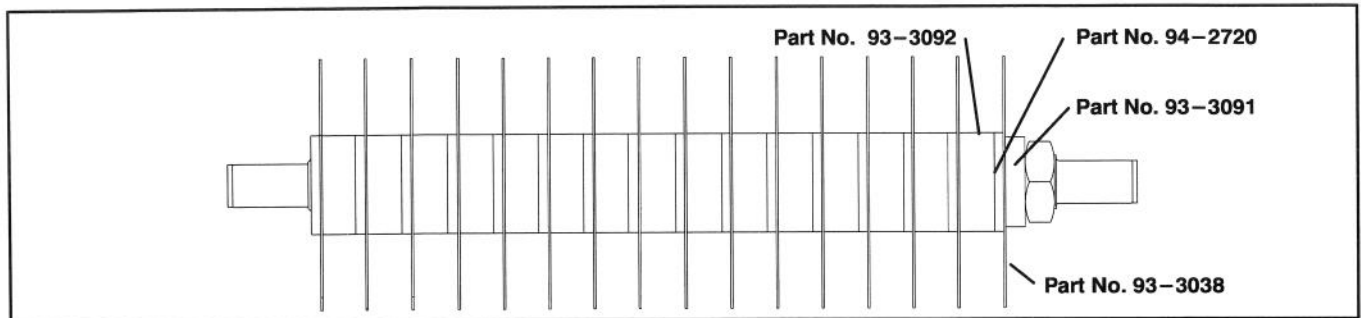


Figure 14

1-1/2" Spacing (Fig. 15).

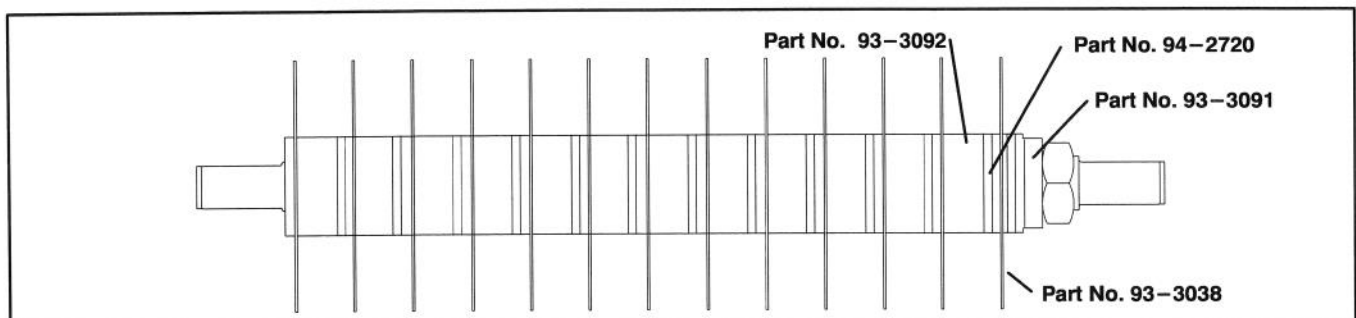


Figure 15

1-3/4" Spacing, (Fig. 16).

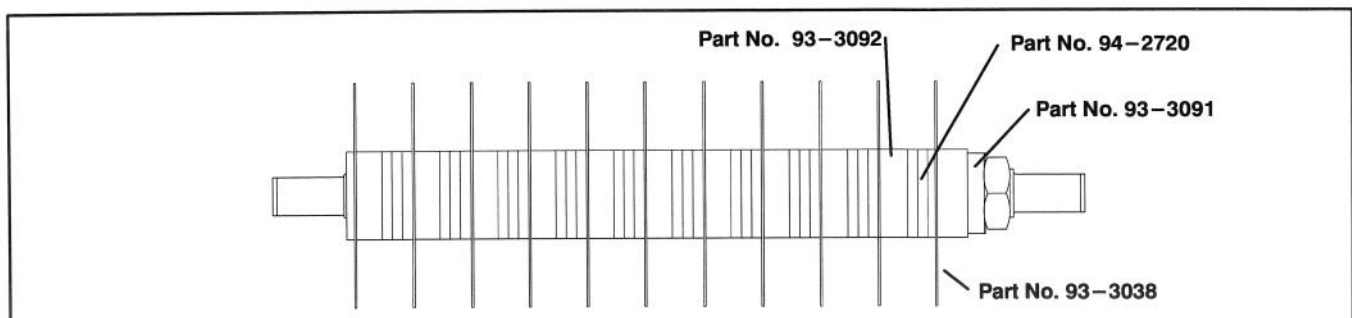


Figure 16

The Toro Promise

A One Year Limited Warranty

The Toro Company promises to repair your TORO Product if defective in materials or workmanship. The following time periods from the date of purchase apply:

Commercial Products **1 Year**

The cost of parts, labor and transportation are included.

If you feel your TORO Product is defective and wish to rely on The Toro Promise, the following procedure is recommended:

1. Contact your Authorized TORO Distributor or Commercial Dealer (the Yellow Pages of your telephone directory is a good reference source).
2. The TORO Distributor or Commercial Dealer will advise you on the arrangements that can be made to inspect and repair your product.
3. The TORO Distributor or Commercial Dealer will inspect the product and advise you whether the product is defective and, if so, make all repairs necessary to correct the defect without an extra charge to you.

If for any reason you are dissatisfied with the distributor's analysis of the defect or the service performed, you may contact us.

Write:

TORO Commercial Products Service Department
8111 Lyndale Avenue South
Minneapolis, MN 55420

The above remedy of product defects through repair by an Authorized TORO Distributor or Commercial Dealer is the purchaser's sole remedy for any defect.

THERE IS NO OTHER EXPRESS WARRANTY. ALL IMPLIED WARRANTIES OF MERCHANTABILITY AND FITNESS FOR USE ARE LIMITED TO THE DURATION OF THE EXPRESS WARRANTY.

Some states do not allow limitations on how long an implied warranty lasts, so the above limitation may not apply to you.

This Warranty applies only to parts or components which are defective and does not cover repairs necessary due to normal wear, misuse, accidents, or lack of proper maintenance. Regular, routine maintenance of the unit to keep it in proper operating condition is the responsibility of the owner.

All warranty repairs reimbursable under The Toro Promise must be performed by an Authorized Toro Commercial Dealer or Distributor using Toro approved replacement parts.

Repairs or attempted repairs by anyone other than an Authorized TORO Distributor or Commercial Dealer are not reimbursable under the TORO Promise. In addition, these unauthorized repair attempts may result in additional malfunctions, the correction of which is not covered by warranty.

THE TORO COMPANY IS NOT LIABLE FOR INDIRECT, INCIDENTAL OR CONSEQUENTIAL DAMAGES IN CONNECTION WITH THE USE OF THE PRODUCT INCLUDING ANY COST OR EXPENSE OF PROVIDING SUBSTITUTE EQUIPMENT OR SERVICE DURING PERIODS OF MALFUNCTION OR NON-USE.

Some states do not allow the exclusion of incidental or consequential damages, so the above exclusion may not apply to you.

This warranty gives you specific legal rights, and you may also have other rights which vary from state to state.

COUNTRIES OTHER THAN THE UNITED STATES OR CANADA

Customers who have purchased TORO products exported from the United States or Canada should contact their TORO Distributor (Dealer) to obtain guarantee policies for your country, province, or state. If for any reason you are dissatisfied with your Distributor's service or have difficulty obtaining guarantee information, contact the TORO importer. If all other remedies fail, you may contact us at The Toro Company.