



Dew Whip Holder Kit

Greensmaster 3300/3400 Series TriFlex Traction Unit

Model No. 119-7138

Installation Instructions

Loose Parts

Use the chart below to verify that all parts have been shipped.

Description	Qty.	Use
Dew whip holder assembly	1	Install the kit.
Flange nut (3/8 inch)	1	
Hex-head bolt (3/8 x 2 inches)	1	
Flat washer	2	
Hex-head bolt (5/16 x 7/8 inch)	2	
Flange nut (5/16 inch)	2	

Installing the Kit

1. Park the machine on a level surface, turn off the engine, remove the ignition key, and set the parking brake.
2. Position the rear bracket of the dew whip holder as shown in the inset of Figure 1, and ensure that the front bracket of the dew whip holder rests against the bracket on the machine (Figure 1).

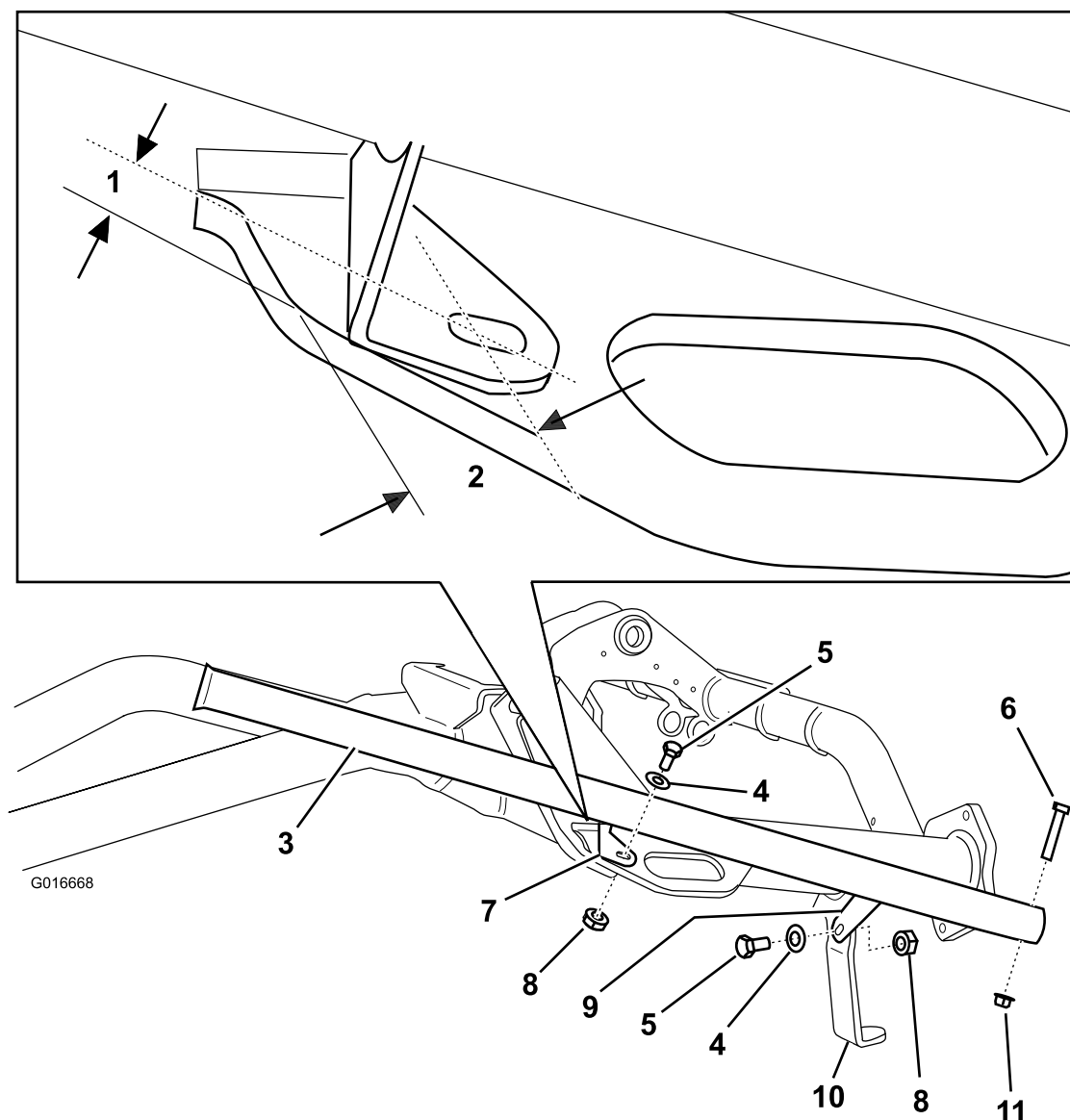


Figure 1

- | | | |
|-----------------------------|------------------------------------|---------------------------|
| 1. 5/8 inch (16 mm) | 5. Hex-head bolt (5/16 x 7/8 inch) | 9. Front bracket |
| 2. 1–5/16 inches (33 mm) | 6. Hex-head bolt (3/8 x 2 inches) | 10. Bracket on machine |
| 3. Dew whip holder assembly | 7. Rear bracket | 11. Flange nut (3/8 inch) |
| 4. Washer | 8. Flange nut (5/16 inch) | |

3. Using the slot in the rear bracket as a template (Figure 1), mark and drill a 11/32-inch (9 mm) diameter hole through the frame member.
4. Loosely attach the rear bracket of the dew whip holder to the machine frame member with a hex-head bolt (5/16 x 7/8 inch), a flat washer, and a flange nut (5/16 inch).
5. Using the hole in the front bracket as a template, mark and drill a 11/32-inch (9 mm) diameter hole through the bracket on the machine.
6. Loosely attach the front bracket of the dew whip holder to the bracket on the machine with a hex-head bolt (5/16 x 7/8 inch), a flat washer, and a flange nut (5/16 inch).
7. Adjust the dew whip holder to the desired position on the machine and tighten the fasteners on the front and rear brackets of the dew whip holder.