

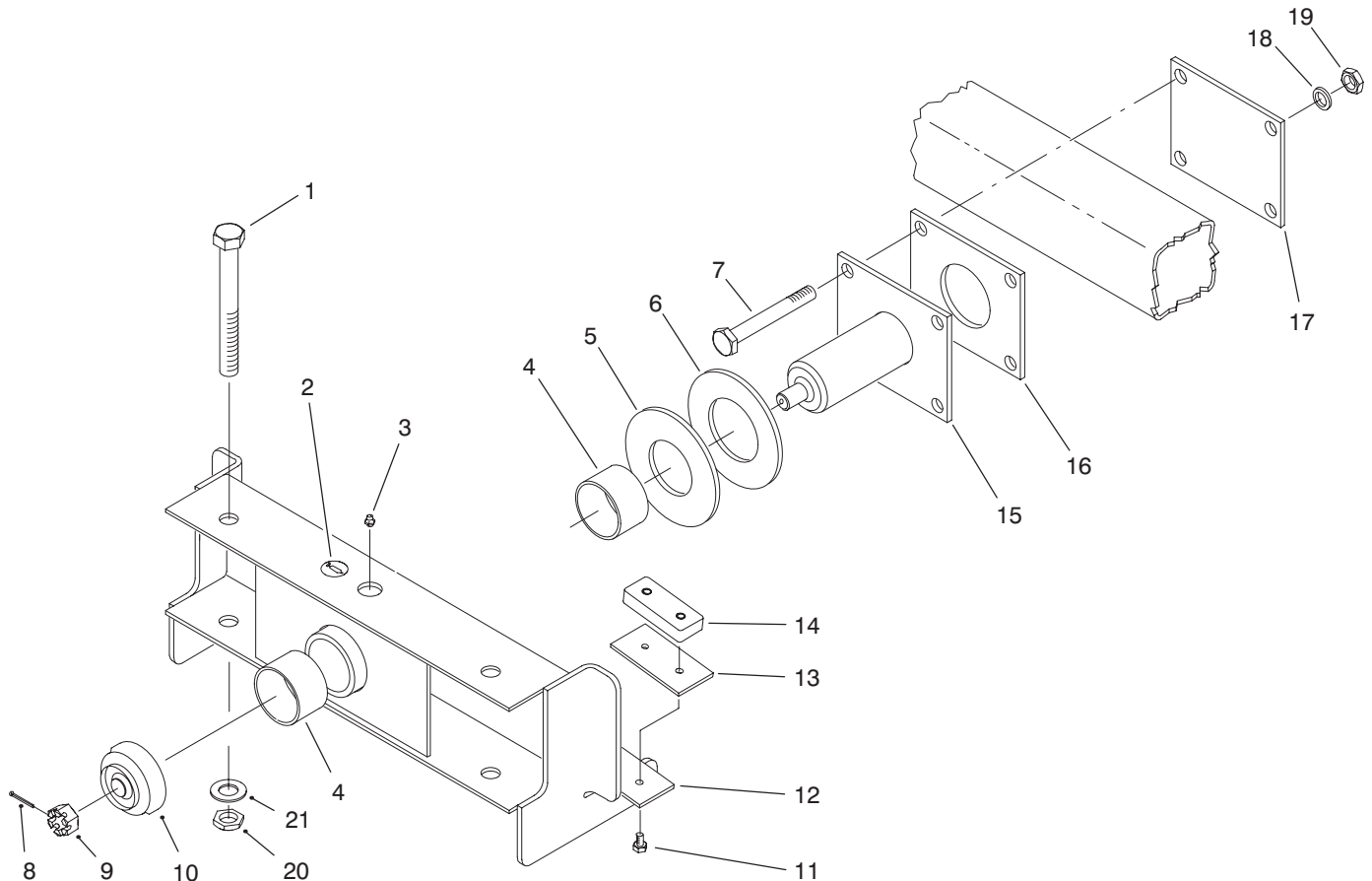


MODEL NO. 30386-70001 & UP

PARTS
CATALOG

ROTARY BRUSH

For Groundsmaster® 3000 Series



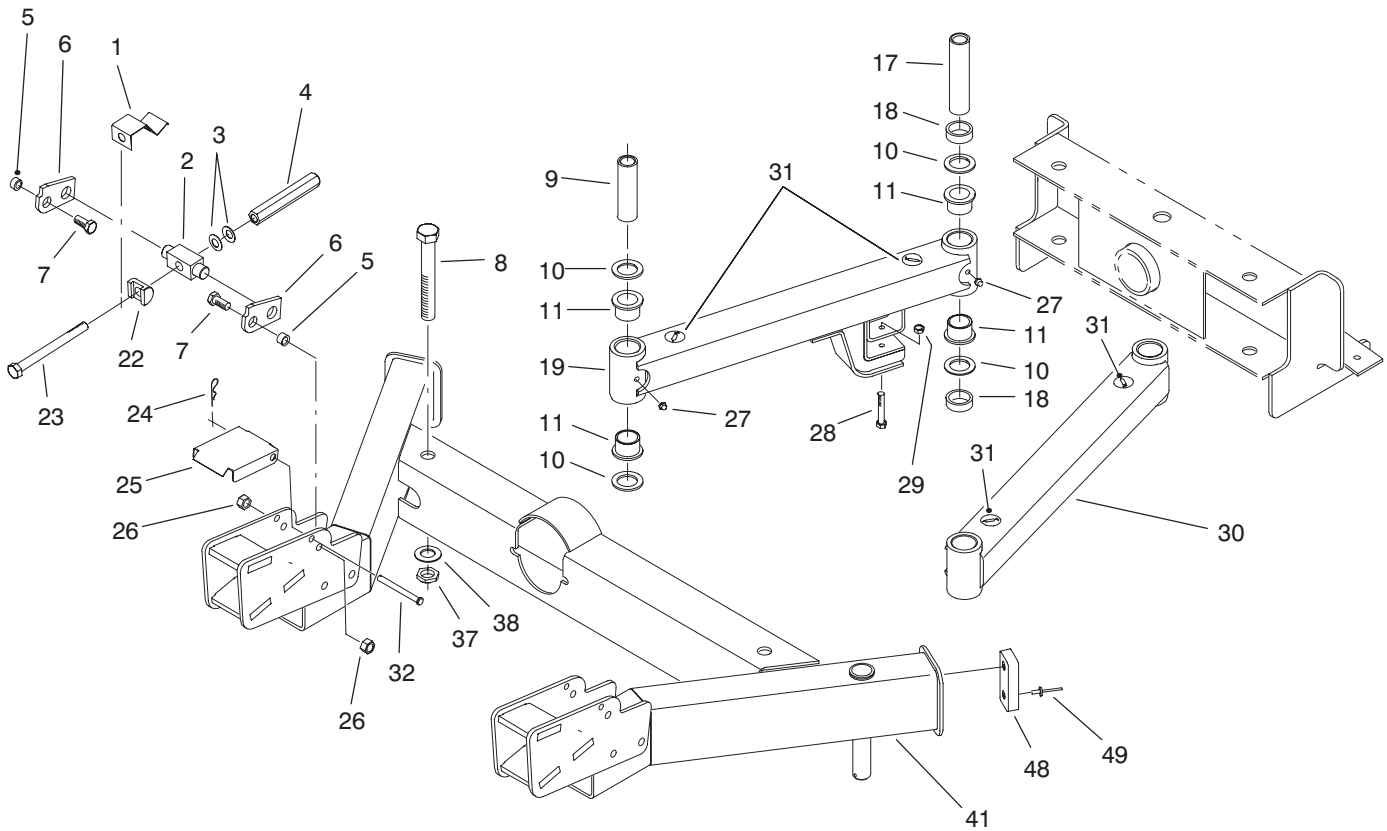
T-2611

TOP MOUNT ASSEMBLY

Ref. No.	Part No.	Description	No. Used
1	3216-14	Screw - Hex. Hd.	2
2	58-6520	Decal - Grease	1
3	302-5	Fitting - Grease	1
4	95-5127	Bushing - Sleeve	2
5	95-3204	Washer - Pivot	1
6	95-3200	Washer - Pivot	1
7	33118-140	Screw - Hex. Hd.	4
8	3272-42	Pin - Cotter	1
9	32136-5	Nut - Hex. Slotted	1
10	95-3202	Cap - Pivot	1
11	321-4	Screw - Hex. Hd.	4

Ref. No.	Part No.	Description	No. Used
12	95-6104	Top Mount Assembly (Incl. Ref. #2-4)	1
13	95-2897	Mount - Bumper	2
14	86-5350	Bumper - Rubber	2
15	95-2888	Pin - Pivot	1
16	95-2896	Plate - Spacer	1
17	95-2884	Plate - Back	1
18	33098-00	Washer - Flat	4
19	33028-00	Nut - Lock	4
20	32146-20	Nut - Jam Lock	2
21	3256-28	Washer - Flat	2

TPS

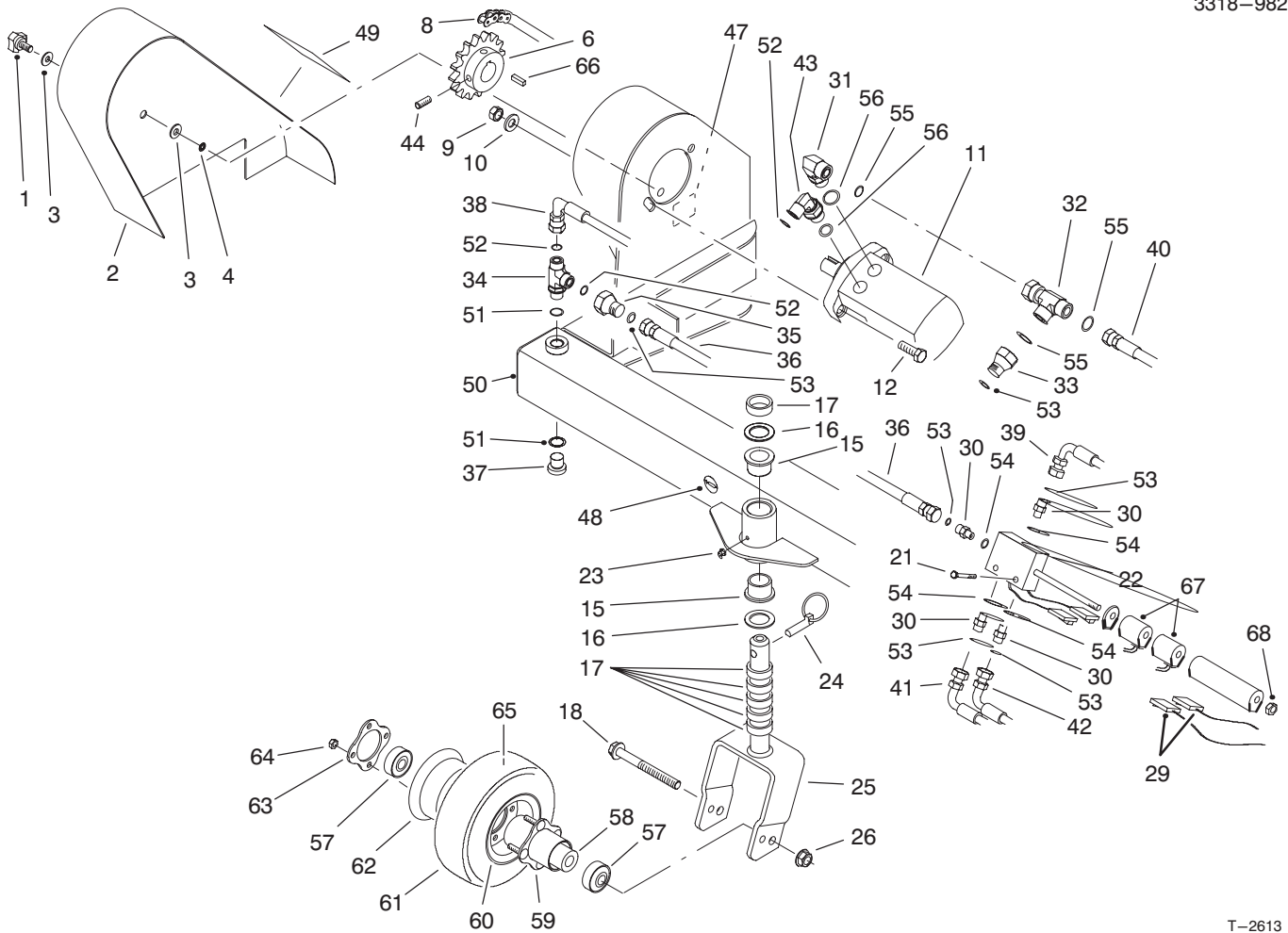


T-2612

SUSPENSION ASSEMBLY

Ref. No.	Part No.	Description	No. Used
1	93-4818	Spring - Lever	2
2	93-4677	Hub - Release	2
3	3290-413	Washer - Bellville	4
4	93-4678	Lever - Release	2
5	93-4618	Spacer - Pivot	4
6	93-4675	Plate - Release	4
7	33115-025	Screw - Hex. Hd.	4
8	3216-6	Screw	2
9	94-7394	Spacer - Bushing	2
10	3-6781	Washer - Thrust	8
11	28-9290	Bushing	8
17	94-7377	Spacer - Bushing	2
18	63-0070	Spacer	4
19	95-6102	Left Arm Assembly (Incl. Ref. #11, 27, 31 & 50)	1
22	93-4676	Shaft - Latch	2

Ref. No.	Part No.	Description	No. Used
23	3213-24	Screw - Hex. Hd.	2
24	3290-467	Pin - Cotter Hair	2
25	93-4819	Cover - Latch	2
26	33025-00	Nut - Lock	4
27	302-11	Fitting - Grease	4
28	33113-045	Screw - Hex. Hd.	1
29	33023-00	Nut - Lock	1
30	95-6103	Right Arm Assembly (Incl. Ref. #11, 27, 31 & 50)	1
31	58-6520	Decal - Grease	4
32	283-88	Pin - Clevis	2
37	32146-20	Nut - Lock	2
38	3256-28	Washer - Flat	2
41	94-7390	Mount Assembly	1
48	86-5350	Bumper - Rubber	2
49	3269-11	Rivet	4



T-2613

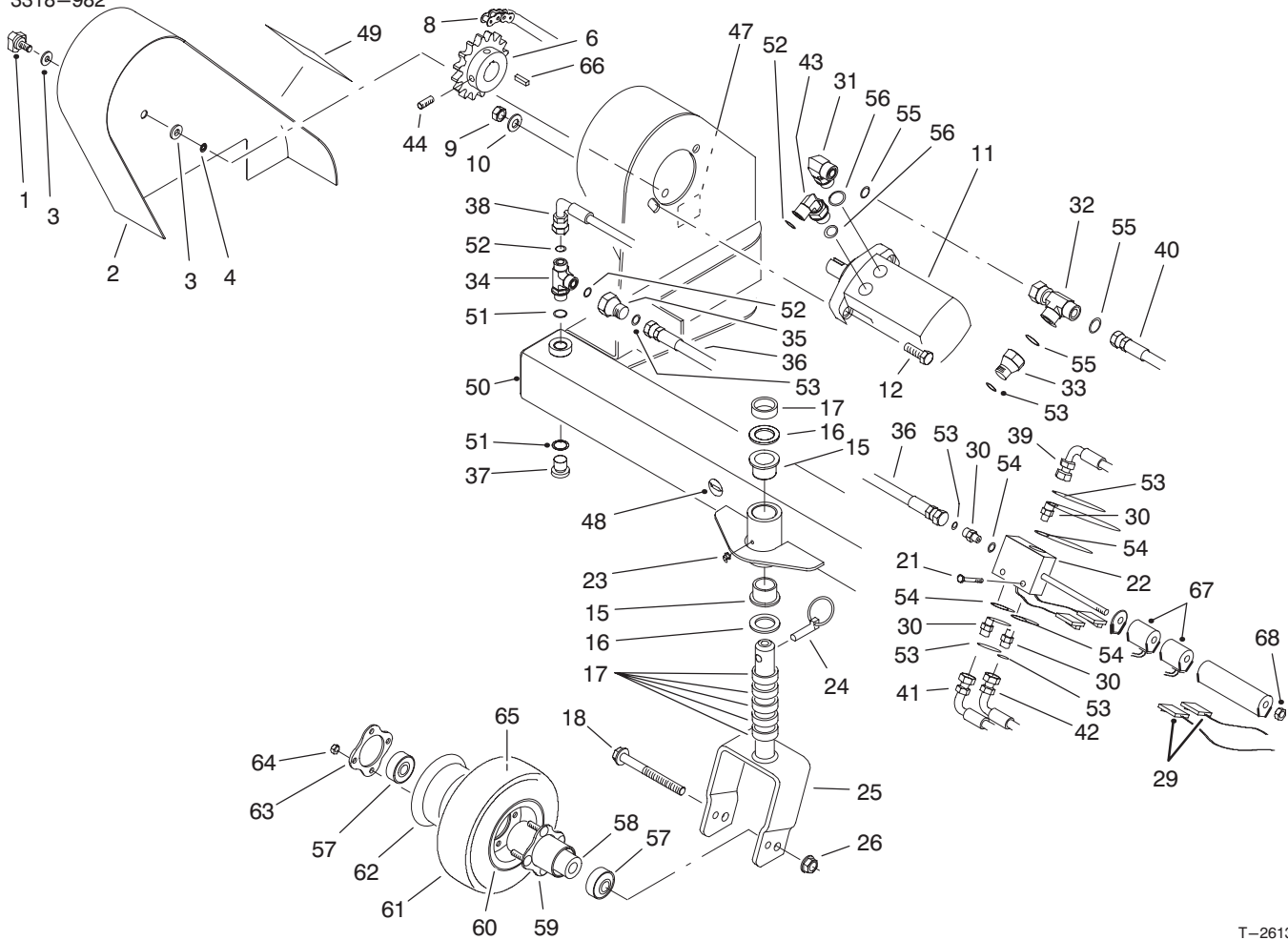
FRAME ASSEMBLY

Ref. No.	Part No.	Description	No. Used
1	77-3620	Retainer - Cover	1
2	95-6106	Cover Assembly (Incl. Ref. #49)	1
3	3256-3	Washer - Flat	2
4	32151-72	Ring - Retaining	1
6	94-7353	Sprocket Assembly 16T (Incl. Ref. #44)	1
8	94-7354	Chain - Roller	1
9	32146-13	Nut - Lock	2
10	3256-26	Washer - Flat	2
11	94-7374	Hydraulic Motor Assembly	1
12	325-6	Screw - Cap Hex. Hd.	2
16	3-6781	Washer - Thrust	4
17	63-0070	Spacer	12
18	325-21	Screw - Hex. Hd.	2
21	33114-045	Screw - Hex. Hd.	2
*	33094-00	Washer - Flat	2
*	33024-00	Nut - Lock	2
22	95-6143	Valve	1
23	302-5	Fitting - Grease	2
24	283-71	Pin - Lynch	2
25	92-5575	Fork - Castor	2
26	32128-56	Nut - Hex.	2
29	95-3290	Harness - Wire	1
30	340-92	Fitting - Straight (Incl. Ref. #53 & 54)	4

Ref. No.	Part No.	Description	No. Used
31	340-17	Fitting - 90° (Incl. Ref. #55 & 56)	1
32	340-147	Fitting - Tee (Incl. Ref. #55)	1
33	95-5123	Fitting - Adapter	1
34	340-109	Fitting - Tee (Incl. Ref. #51 & 52)	1
35	95-5124	Fitting - Adapter	1
36	95-5114	Hose - Hydraulic	1
37	353-988	Fitting - Plug (Incl. Ref. #51)	1
38	95-5112	Hose - Hydraulic	1
39	95-5113	Hose - Hydraulic	1
40	95-5115	Hose - Hydraulic	1
41	95-5116	Hose - Hydraulic	1
42	95-5117	Hose - Hydraulic	1
43	340-105	Fitting - 90° (Incl. Ref. #52 & 56)	1
44		Screw - Set	2
47	88-8950	Decal - Warning	1
48	58-6520	Decal - Grease	4
49	95-5919	Decal - Danger	1
50	95-6100	Frame Assembly (Incl. Ref. #15, 23, 47 & 48)	1
51	237-79	Seal - O-Ring	2
52	237-30	Seal - O-Ring	3

*Not Illustrated

3318-982



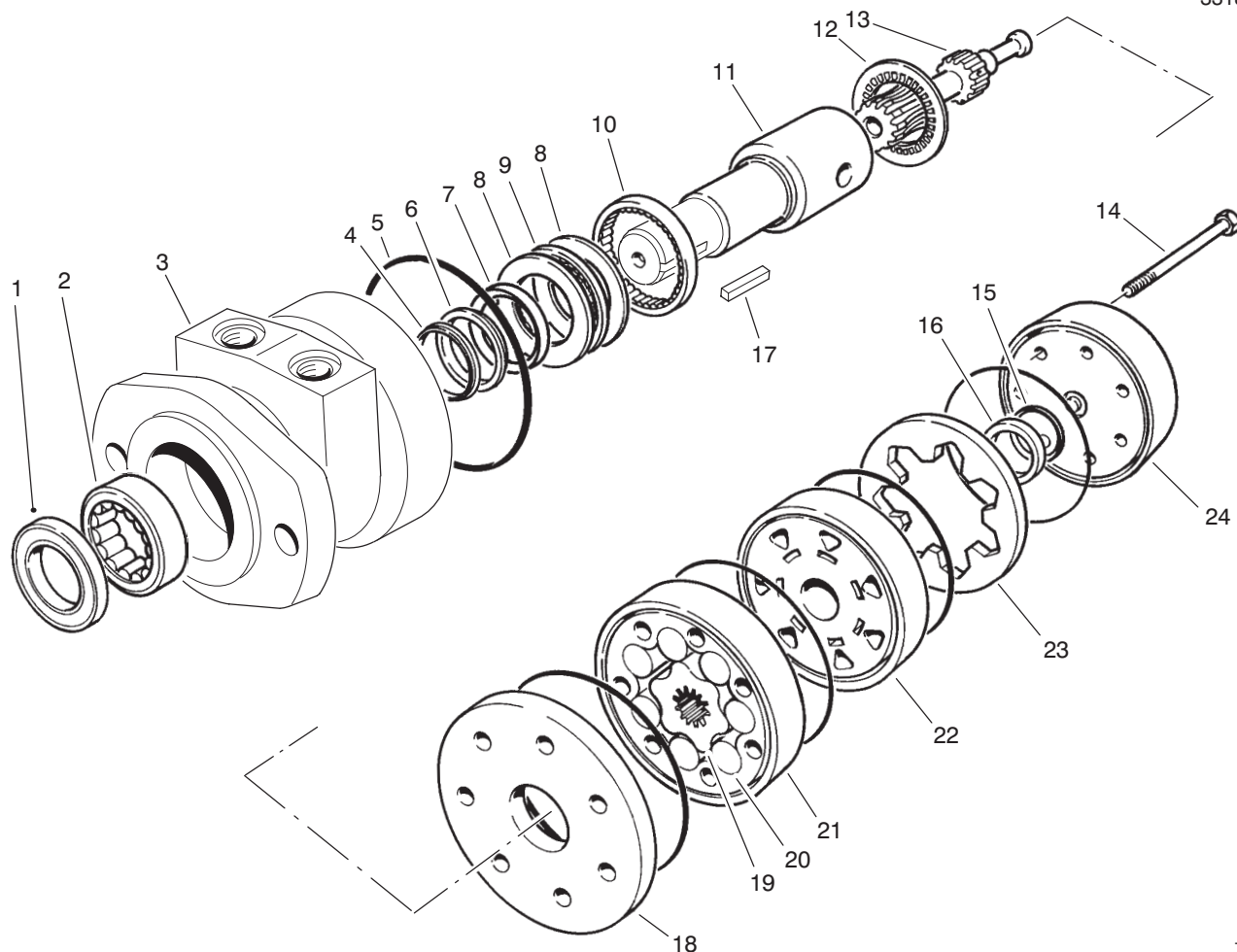
T-2613

FRAME ASSEMBLY (Continued)

Ref. No.	Part No.	Description	No. Used
53	237-21	Seal - O-Ring	6
54	237-78	Seal - O-Ring	4
55	237-65	Seal - O-Ring	3
56	237-80	Seal - O-Ring	2
57	93-4237	Bearing - Castor	4
58	93-4241	Spacer - Bearing	2
59	93-5980	Hub	2
60	93-4239	Rim	2
61	93-9939	Tire	2
62	95-2741	Rim	2
63	93-4242	Plate	2

Ref. No.	Part No.	Description	No. Used
64	32128-16	Nut - Lock	8
65	68-8950	Tube - Inner 8" w/valve	2
66	11-5790	Key - Square	1
67	95-6142	Coil	2
68	3219-10	Nut - Hex.	1
*	94-7483	Valve Block Assembly (Incl. Ref. #22, 67 & 68)	1
*	95-6144	Seal Kit - Valve	1
*	93-9938	8" Castor Wheel Assembly (Incl. Ref. #57-65)	2

*Not Illustrated



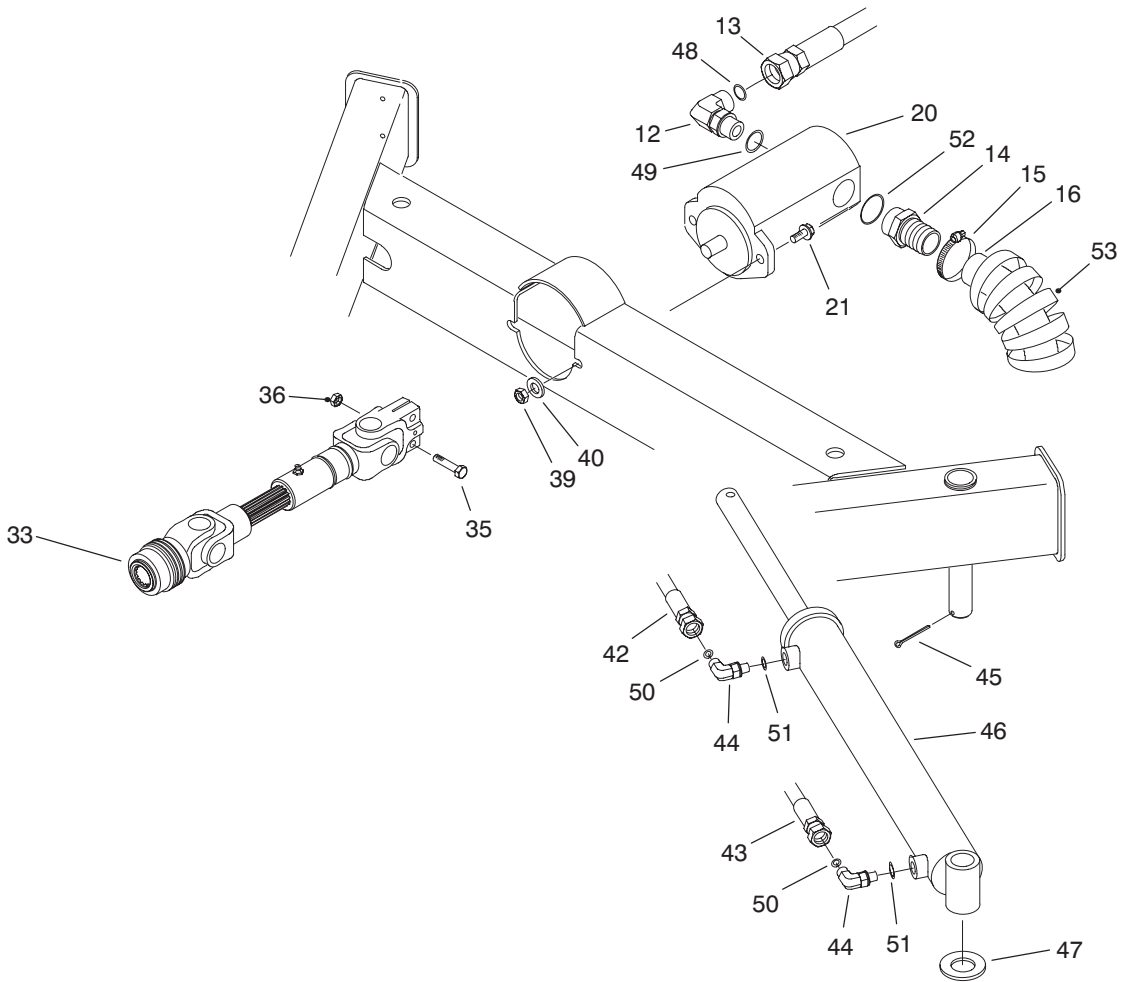
T-2645

FRONT HYDRAULIC DRIVE MOTOR NO. 94-7374

Ref. No.	Part No.	Description	No. Used
1		Seal - Dirt & Water	1
2		Bearing	1
3		Housing	1
4		Washer - Backup	1
5		Seal - Rings	5
6		Washer - Backup	1
7		Seal - Inner	1
8		Washer - Thrust	2
9		Bearing - Thrust	1
10		Bearing	1
11	95-6137	Shaft - Coupling	1
12	76-0850	Bearing - Thrust	1
13	76-0930	Link - Drive	7
14	76-1030	Screw - Cap, Hex. Hd.	1
15		Seal - Commutator	1
16		Commutator	1

Ref. No.	Part No.	Description	No. Used
17	95-7023	Key - Square	1
18	76-0870	Plate - Wear	1
19		Rotor	1
20		Vane	7
21		Stator	1
22	95-6139	Manifold	1
23		Ring - Commutator	1
24	76-0940	Assembly - Cover, End	1
*	76-0950	Rotor Set (Incl. Ref. #19-21)	1
*	95-6138	Assembly - Commutator (Incl. Ref. #15, 16 & 23)	1
*	76-0800	Kit - Seal (Incl. Ref. #1, 4-7 & 15)	1
*	95-6136	Assembly - Housing (Incl. Ref. #2, 3 & 8-10)	1

*Not Illustrated

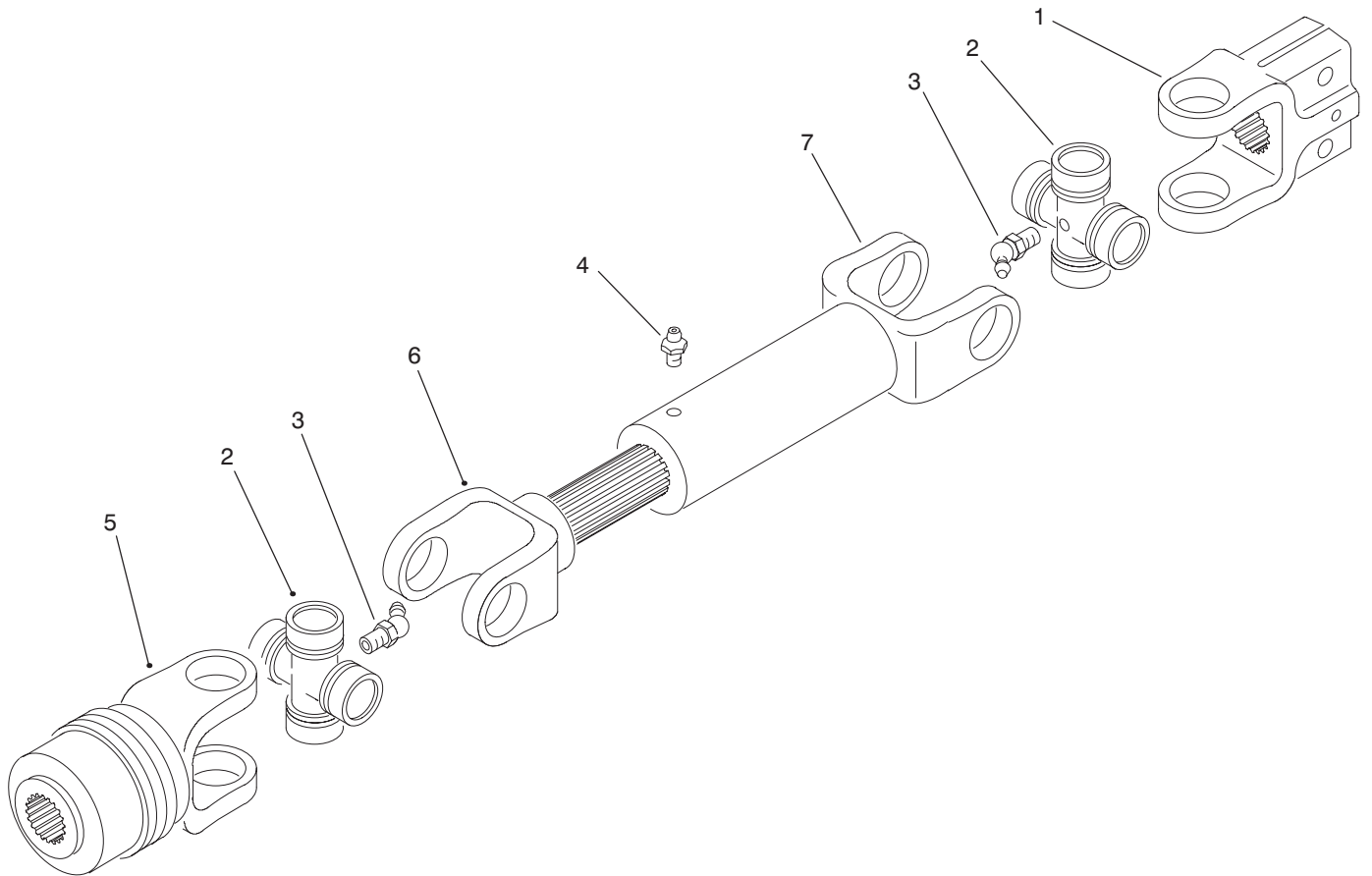


T-2614

HYDRAULIC DRIVE COMPONENTS

Ref. No.	Part No.	Description	No. Used
12	340-17	Fitting - 90° (Incl. Ref. #48 & 49)	1
13	95-5115	Hose - Hydraulic	1
14	95-5620	Fitting - Straight (Incl. Ref. #52)	1
15	2412-3	Clamp - Hose	1
16	95-5118	Hose - Hydraulic	1
20	94-7376	Hydraulic Pump Assembly	1
21	33105-030	Screw - Hex. Hd.	2
33	94-7375	Drive Shaft Assembly	1
35	322-7	Screw - Hex. Hd.	2
36	32153-3	Nut - Lock	2
39	33025-00	Nut - Lock	2
40	33095-00	Washer - Flat	2

Ref. No.	Part No.	Description	No. Used
42	95-5116	Hose - Hydraulic	1
43	95-5117	Hose - Hydraulic	1
44	340-132	Fitting - 90° (Incl. Ref. #50 & 51)	1
45	3272-20	Pin - Cotter	1
46	94-7373	Hydraulic Cylinder Assembly	1
47	3256-62	Washer - Flat	1
48	237-65	Seal - O-Ring	2
49	237-80	Seal - O-Ring	2
50	237-21	Seal - O-Ring	2
51	237-78	Seal - O-Ring	2
52	237-146	Seal - O-Ring	1
53	95-7001	Wrap - Hose	1



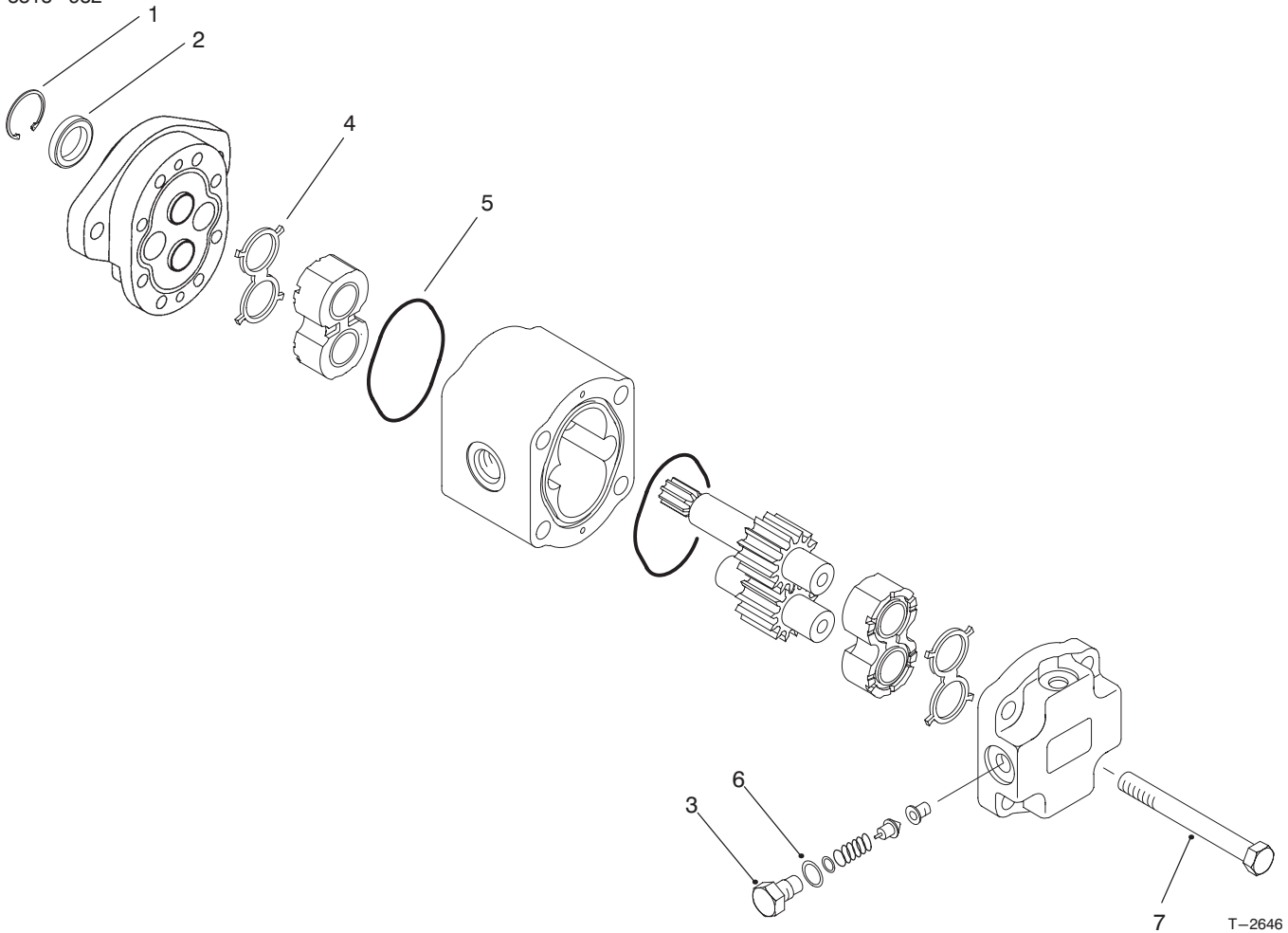
T-2615

DRIVE SHAFT ASSEMBLY NO. 94-7375

Ref. No.	Part No.	Description	No. Used
1	94-7450	Yoke - End	1
2	54-9180	Kit - U-Joint	2
3	62-3820	Fitting - Grease	2
4	302-58	Fitting - Grease	1

Ref. No.	Part No.	Description	No. Used
5	93-4633	Yoke - Auto-Lok	1
6	94-7378	Shaft - Slip Yoke	1
7	94-7379	Tube - Slip Yoke	1

3318-982



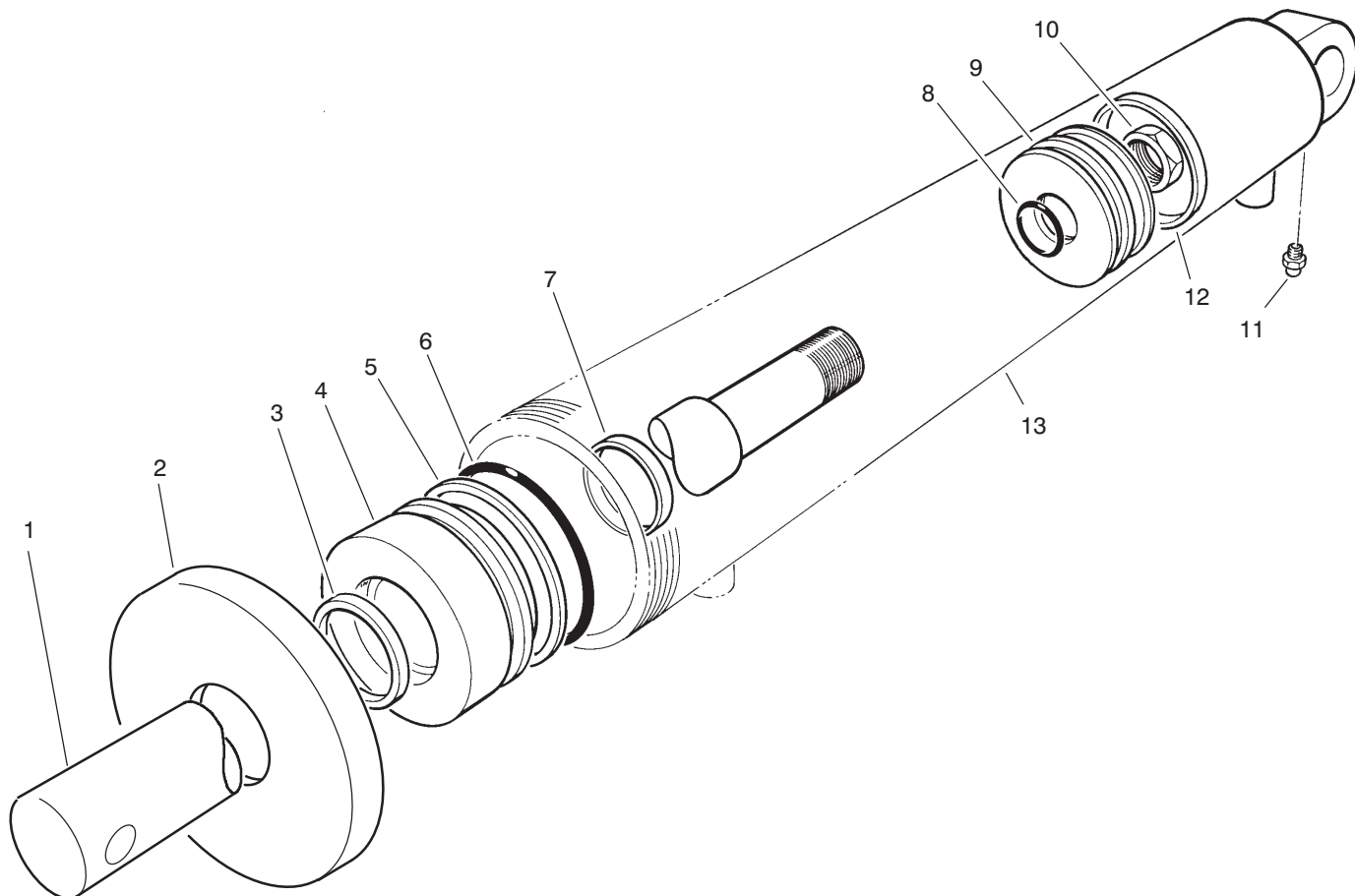
T-2646

HYDRAULIC PUMP ASSEMBLY NO. 94-7376

Ref. No.	Part No.	Description	No. Used
1		Ring - Retaining	1
2	95-5938	Seal - Shaft	1
3	95-5937	Valve - Relief	1
4		E-Ring	2
5		Seal - O-Ring	2

Ref. No.	Part No.	Description	No. Used
6	96-1289	Seal Kit - Relief Valve	1
7	95-5940	Bolt	4
*	95-5939	Seal Kit - Pump (Incl. Ref. #1, 2 & 4-6)	1

*Not Illustrated



T-2617

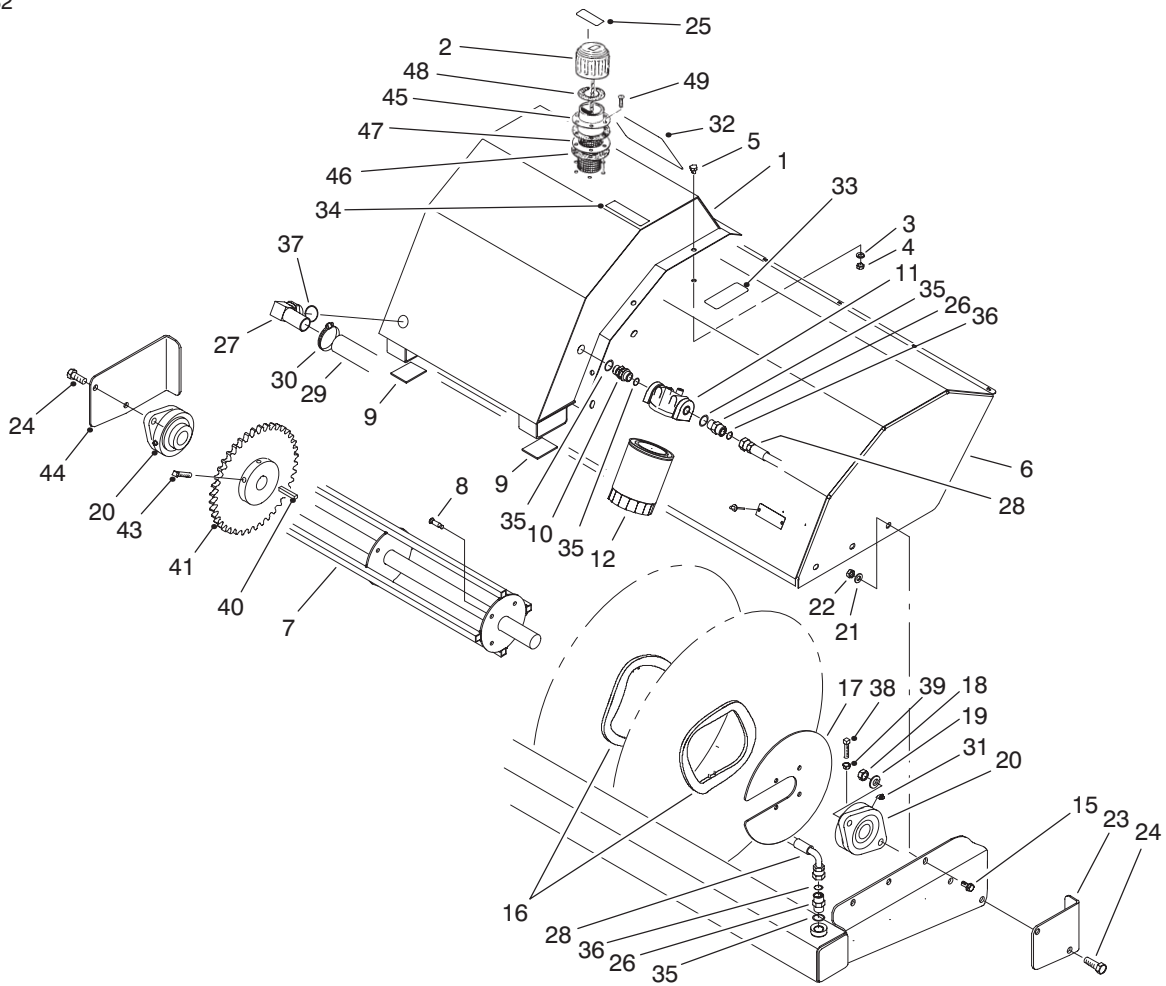
HYDRAULIC CYLINDER ASSEMBLY NO. 94-7373

Ref. No.	Part No.	Description	No. Used
1	95-6148	Shaft	1
2	94-2605	Collar	1
†3		Seal - Dust	1
4	95-6147	Head	1
†5		Ring - Back-Up	1
†6		Seal - O-Ring	1
†7		Seal - Rod	1
†8		Seal - O-Ring	1

Ref. No.	Part No.	Description	No. Used
9	95-6146	Piston	1
10	60-9760	Nut - Lock	1
11	302-5	Fitting - Grease	1
†12		Seal - Uni-Ring	1
13	95-6145	Barrel	1
*	95-6149	Seal Repair Kit (Incl. Ref. #3, 5-8 & 12)	1

*Not Illustrated

†Not Serviceable Separately



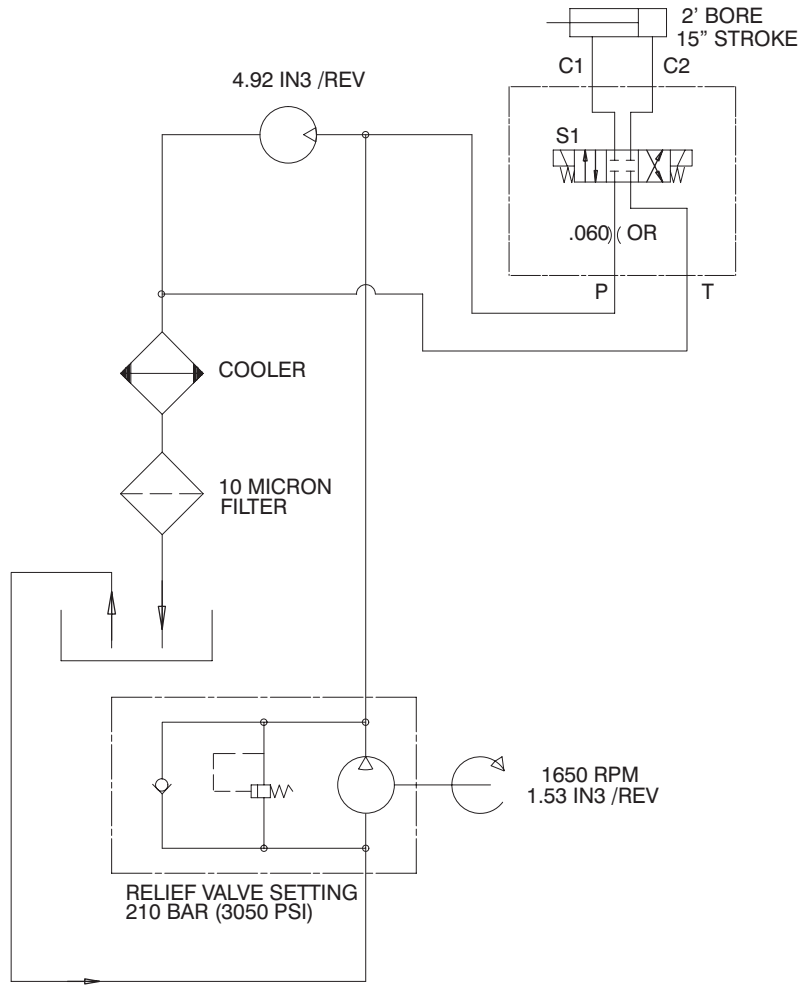
T-2610

BRUSH ASSEMBLY

Ref. No.	Part No.	Description	No. Used
1	95-6105	Hydraulic Tank Assembly (Incl. Ref. #25, 32 & 34)	1
2	95-7032	Cap & Chain Assembly	1
3	33024-00	Nut - Lock	8
4	33094-00	Washer - Flat	8
5	33104-016	Screw - Hex. Flange Hd.	8
6	95-6101	Cover Assembly (Incl. Ref. #33 & 34)	1
7	94-7364	Axle - Broom	1
8	95-3210	Stud - Wheel	4
9	95-2899	Pad - Rubber	2
10	95-3209	Fitting - Straight (Incl. Ref. #35)	1
11	54-0100	Head - Filter	1
12	54-0110	Element - Filter	1
15	33105-020	Screw - Hex. Flange Hd.	6
16	94-7372	Element - Brush Plastic	32
*	95-5942	Element - Brush Steel	32
17	94-7370	Plate - Axle	1
18	33026-00	Nut - Lock	4
19	33096-00	Washer - Flat	4
20	94-7484	Bearing - Axial	2
21	33095-00	Washer - Flat	6
22	33025-00	Nut - Lock	6
23	95-3206	Guard - Right	1
24	33106-040	Screw - Hex. Flange Hd.	4
25	85-4730	Decal - Oil	1

Ref. No.	Part No.	Description	No. Used
26	340-4	Fitting - Straight (Incl. Ref. #35 & 36)	2
27	56-9530	Fitting - 90° (Incl. Ref. #37)	1
28	95-5119	Hose - Hydraulic	1
29	95-5118	Hose - Hydraulic	1
30	2412-3	Clamp - Hose	1
31	302-40	Fitting - Grease	2
32	67-7320	Decal - TORO	1
33	54-0910	Decal - Warning	2
34	68-7390	Decal - Warning	1
35	237-79	Seal - O-Ring	4
36	237-30	Seal - O-Ring	2
37	237-117	Seal - O-Ring	1
38	3242-6	Screw - Square Hd. Set	2
39	3219-2	Nut - Hex.	2
40	11-5790	Key - Square	1
41	94-7350	Sprocket - 40T	1
43	3243-9	Screw - Square Hd. Set	2
44	95-3205	Guard - Left	1
45	353-961	Bayonet Flange	1
46	353-963	Gasket	2
47	62-2610	Strainer	1
48	76-1720	Gasket - Filler Cap	1
49	32144-39	Screw	6
*	95-7004	Filler Cap Assembly (Incl. Ref. #2 & 45-49)	1

*Not Illustrated



T-2616

HYDRAULIC SCHEMATIC

Ref. No.	Part No.	Description	No. Used
1			

Ref. No.	Part No.	Description	No. Used

TORO PART NUMBER INDEX

Part No.	Description	Pg. No.	Ref. No.	Qty.	Part No.	Description	Pg. No.	Ref. No.	Qty.
3-6781	Washer - Thrust	2	10	8	94-7390	Mount Assembly	2	41	1
3-6781	Washer - Thrust	3	16	4	94-7394	Spacer - Bushing	2	9	2
11-5790	Key - Square	10	40	1	94-7450	Yoke - End	7	1	1
11-5790	Key - Square	4	66	1	94-7483	Valve Block Assembly	4	*	1
28-9290	Bushing	2	11	8	94-7484	Bearing - Axial	10	20	2
54-0100	Head - Filter	10	11	1	95-2741	Rim	4	62	2
54-0110	Element - Filter	10	12	1	95-2884	Plate - Back	1	17	1
54-0910	Decal - Warning	10	33	2	95-2888	Pin - Pivot	1	15	1
54-9180	Kit - U-Joint	7	2	2	95-2896	Plate - Spacer	1	16	1
56-9530	Fitting - 90°	10	27	1	95-2897	Mount - Bumper	1	13	2
58-6520	Decal - Grease	1	2	1	95-2899	Pad - Rubber	10	9	2
58-6520	Decal - Grease	2	31	4	95-3200	Washer - Pivot	1	6	1
58-6520	Decal - Grease	3	48	4	95-3202	Cap - Pivot	1	10	1
60-9760	Nut - Lock	9	10	1	95-3204	Washer - Pivot	1	5	1
62-2610	Strainer	10	47	1	95-3205	Guard - Left	10	44	1
62-3820	Fitting - Grease	7	3	2	95-3206	Guard - Right	10	23	1
63-0070	Spacer	3	17	12	95-3209	Fitting - Straight	10	10	1
63-0070	Spacer	2	18	4	95-3210	Stud - Wheel	10	8	4
67-7320	Decal - TORO	10	32	1	95-3290	Harness - Wire	3	29	1
68-7390	Decal - Warning	10	34	1	95-5112	Hose - Hydraulic	3	38	1
68-8950	Tube - Inner 8 w/valve	4	65	2	95-5113	Hose - Hydraulic	3	39	1
76-0800	Kit - Seal	5	*	1	95-5114	Hose - Hydraulic	3	36	1
76-0850	Bearing - Thrust	5	12	1	95-5115	Hose - Hydraulic	6	13	1
76-0870	Plate - Wear	5	18	1	95-5115	Hose - Hydraulic	3	40	1
76-0930	Link - Drive	5	13	7	95-5116	Hose - Hydraulic	3	41	1
76-0940	Assembly - Cover, End	5	24	1	95-5116	Hose - Hydraulic	6	42	1
76-0950	Rotor Set	5	*	1	95-5117	Hose - Hydraulic	3	42	1
76-1030	Screw - Cap, Hex. Hd.	5	14	1	95-5117	Hose - Hydraulic	6	43	1
76-1720	Gasket - Filler Cap	10	48	1	95-5118	Hose - Hydraulic	6	16	1
77-3620	Retainer - Cover	3	1	1	95-5118	Hose - Hydraulic	10	29	1
85-4730	Decal - Oil	10	25	1	95-5119	Hose - Hydraulic	10	28	1
86-5350	Bumper - Rubber	1	14	2	95-5123	Fitting - Adapter	3	33	1
86-5350	Bumper - Rubber	2	48	2	95-5124	Fitting - Adapter	3	35	1
88-8950	Decal - Warning	3	47	1	95-5127	Bushing - Sleeve	1	4	2
92-5575	Fork - Castor	3	25	2	95-5620	Fitting - Straight	6	14	1
93-4237	Bearing - Castor	4	57	4	95-5919	Decal - Danger	3	49	1
93-4239	Rim	4	60	2	95-5937	Valve - Relief	8	3	1
93-4241	Spacer - Bearing	4	58	2	95-5938	Seal - Shaft	8	2	1
93-4242	Plate	4	63	2	95-5939	Seal Kit - Pump	8	*	1
93-4618	Spacer - Pivot	2	5	4	95-5940	Bolt	8	7	4
93-4633	Yoke - Auto-Lok	7	5	1	95-5942	Element - Brush Steel	10	*	32
93-4675	Plate - Release	2	6	4	95-6100	Frame Assembly	3	50	1
93-4676	Shaft - Latch	2	22	2	95-6101	Cover Assembly	10	6	1
93-4677	Hub - Release	2	2	2	95-6102	Left Arm Assembly	2	19	1
93-4678	Lever - Release	2	4	2	95-6103	Right Arm Assembly	2	30	1
93-4818	Spring - Lever	2	1	2	95-6104	Top Mount Assembly	1	12	1
93-4819	Cover - Latch	2	25	2	95-6105	Hydraulic Tank Assembly	10	1	1
93-5980	Hub	4	59	2	95-6106	Cover Assembly	3	2	1
93-9938	8 Castor Wheel Assembly	4	*	2	95-6136	Assembly - Housing	5	*	1
93-9939	Tire	4	61	2	95-6137	Shaft - Coupling	5	11	1
94-2605	Collar	9	2	1	95-6138	Assembly - Commutator	5	*	1
94-7350	Sprocket - 40T	10	41	1	95-6139	Manifold	5	22	1
94-7353	Sprocket Assembly 16T	3	6	1	95-6142	Coil	4	67	2
94-7354	Chain - Roller	3	8	1	95-6143	Valve	3	22	1
94-7364	Axle - Broom	10	7	1	95-6144	Seal Kit - Valve	4	*	1
94-7370	Plate - Axle	10	17	1	95-6145	Barrel	9	13	1
94-7372	Element - Brush Plastic	10	16	32	95-6146	Piston	9	9	1
94-7373	Hydraulic Cylinder Assembly	6	46	1	95-6147	Head	9	4	1
94-7374	Hydraulic Motor Assembly	3	11	1	95-6148	Shaft	9	1	1
94-7375	Drive Shaft Assembly	6	33	1	95-6149	Seal Repair Kit	9	*	1
94-7376	Hydraulic Pump Assembly	6	20	1	95-7001	Wrap - Hose	6	53	1
94-7377	Spacer - Bushing	2	17	2	95-7004	Filler Cap Assembly	10	*	1
94-7378	Shaft - Slip Yoke	7	6	1	95-7023	Key - Square	5	17	1
94-7379	Tube - Slip Yoke	7	7	1	95-7032	Cap & Chain Assembly	10	2	1

*Not Illustrated

TORO PART NUMBER INDEX (Cont.)

3318-982

Part No.	Description	Pg. Ref. No. No. Qty.	Part No.	Description	Pg. Ref. No. No. Qty.
96-1289	Seal Kit - Relief Valve	8 6 1	3290-413	Washer - Bellville	2 3 4
237-21	Seal - O-Ring	6 50 2	3290-467	Pin - Cotter Hair	2 24 2
237-21	Seal - O-Ring	4 53 6	32128-16	Nut - Lock	4 64 8
237-30	Seal - O-Ring	10 36 2	32128-56	Nut - Hex.	3 26 2
237-30	Seal - O-Ring	3 52 3	32136-5	Nut - Hex. Slotted	1 9 1
237-65	Seal - O-Ring	6 48 2	32144-39	Screw	10 49 6
237-65	Seal - O-Ring	4 55 3	32146-13	Nut - Lock	3 9 2
237-78	Seal - O-Ring	6 51 2	32146-20	Nut - Jam Lock	1 20 2
237-78	Seal - O-Ring	4 54 4	32146-20	Nut - Lock	2 37 2
237-79	Seal - O-Ring	10 35 4	32151-72	Ring - Retaining	3 4 1
237-79	Seal - O-Ring	3 51 2	32153-3	Nut - Lock	6 36 2
237-80	Seal - O-Ring	6 49 2	33023-00	Nut - Lock	2 29 1
237-80	Seal - O-Ring	4 56 2	33024-00	Nut - Lock	3 * 2
237-117	Seal - O-Ring	10 37 1	33024-00	Nut - Lock	10 3 8
237-146	Seal - O-Ring	6 52 1	33025-00	Nut - Lock	10 22 6
2412-3	Clamp - Hose	6 15 1	33025-00	Nut - Lock	2 26 4
2412-3	Clamp - Hose	10 30 1	33025-00	Nut - Lock	6 39 2
283-71	Pin - Lynch	3 24 2	33026-00	Nut - Lock	10 18 4
283-88	Pin - Clevis	2 32 2	33028-00	Nut - Lock	1 19 4
302-5	Fitting - Grease	1 3 1	33094-00	Washer - Flat	3 * 2
302-5	Fitting - Grease	9 11 1	33094-00	Washer - Flat	10 4 8
302-5	Fitting - Grease	3 23 2	33095-00	Washer - Flat	10 21 6
302-11	Fitting - Grease	2 27 4	33095-00	Washer - Flat	6 40 2
302-40	Fitting - Grease	10 31 2	33096-00	Washer - Flat	10 19 4
302-58	Fitting - Grease	7 4 1	33098-00	Washer - Flat	1 18 4
321-4	Screw - Hex. Hd.	1 11 4	33104-016	Screw - Hex. Flange Hd.	10 5 8
322-7	Screw - Hex. Hd.	6 35 2	33105-020	Screw - Hex. Flange Hd.	10 15 6
325-6	Screw - Cap Hex. Hd.	3 12 2	33105-030	Screw - Hex. Hd.	6 21 2
325-21	Screw - Hex. Hd.	3 18 2	33106-040	Screw - Hex. Flange Hd.	10 24 4
3213-24	Screw - Hex. Hd.	2 23 2	33113-045	Screw - Hex. Hd.	2 28 1
3216-6	Screw	2 8 2	33114-045	Screw - Hex. Hd.	3 21 2
3216-14	Screw - Hex. Hd.	1 1 2	33115-025	Screw - Hex. Hd.	2 7 4
3219-2	Nut - Hex.	10 39 2	33118-140	Screw - Hex. Hd.	1 7 4
3219-10	Nut - Hex.	4 68 1	340-4	Fitting - Straight	10 26 2
3242-6	Screw - Square Hd. Set	10 38 2	340-17	Fitting - 90°	6 12 1
3243-9	Screw - Square Hd. Set	10 43 2	340-17	Fitting - 90°	3 31 1
3256-3	Washer - Flat	3 3 2	340-92	Fitting - Straight	3 30 4
3256-26	Washer - Flat	3 10 2	340-105	Fitting - 90°	3 43 1
3256-28	Washer - Flat	1 21 2	340-109	Fitting - Tee	3 34 1
3256-28	Washer - Flat	2 38 2	340-132	Fitting - 90°	6 44
3256-62	Washer - Flat	6 47 1	340-147	Fitting - Tee	3 32 1
3269-11	Rivet	2 49 4	353-961	Bayonet Flange	10 45 1
3272-20	Pin - Cotter	6 45 1	353-963	Gasket	10 46 2
3272-42	Pin - Cotter	1 8 1	353-988	Fitting - Plug	3 37 1

*Not Illustrated

PRODUCT CHANGES

In an effort to make improvements available to TORO owners as quickly as possible, minor changes are incorporated into Toro's products from time to time that do not become immediately shown in the Parts Catalog. If such a change has been made in your unit, which is not reflected in your manual, see your TORO Distributor or his Authorized TORO Service Dealer for information and part numbers.

COUNTRIES OTHER THAN THE UNITED STATES OR CANADA

Customers who have purchased TORO products exported from the United States or Canada should contact their Toro Distributor (Dealer) to obtain guarantee policies for your country, province or state. If for any reason you

are dissatisfied with your Distributor's service or have difficulty obtaining guarantee information, contact the TORO importer. If all other remedies fail, you may contact us at The Toro Company.

IDENTIFICATION AND ORDERING

MODEL AND SERIAL NUMBERS

The Rotary Brush has two identification numbers; a model number and a serial number. The two numbers are stamped on a plate which is located on the Brush cover. In any correspondence concerning the Rotary Brush, supply model and serial numbers to assure that correct information and replacement parts are obtained.

To order replacement parts from an Authorized TORO Service Dealer, supply the following information:

1. Model and serial number of the Rotary Brush.
2. Part number, description, and the quantity of part(s) desired.

NOTE: Do not order by reference number if a parts catalog is being used; use the PART NUMBER.

TABLE OF CONTENTS

Description	Page	Description	Page
Top Mount Assembly	1	Hydraulic Pump Assembly No. 94-7376	8
Suspension Assembly	2	Hydraulic Cylinder Assembly No. 94-7373	9
Frame Assembly	3-4	Brush Assembly	10
Hydraulic Motor Assembly No. 94-7374	5	Hydraulic Schematic	11
Hydraulic Drive Components	6	TORO Part Number Index	12-13
Drive Shaft Assembly No. 94-7375	7		

