

TORO®

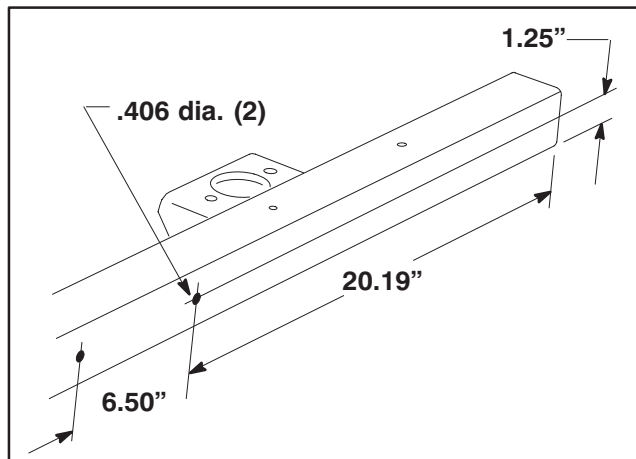
PART NO. 93—7795

**INSTALLATION
INSTRUCTIONS****MUFFLER KIT****GM455D & RM3500D/335D****CAUTION**

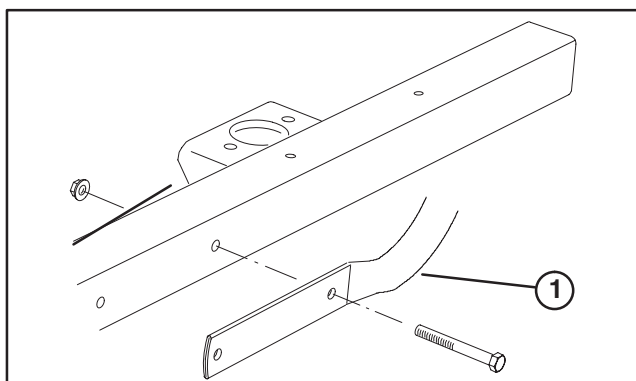
Be careful while working around muffler as it may be hot and could cause injury.

Note: If air cleaner is mounted directly to muffler, it must be removed from muffler and re-mounted to left frame tube with a air cleaner bracket, Part No. 92—6578. The bracket can be obtained from your local Toro Distributor. Use steps 1 thru 4 to remount air cleaner, otherwise proceed to step 5.

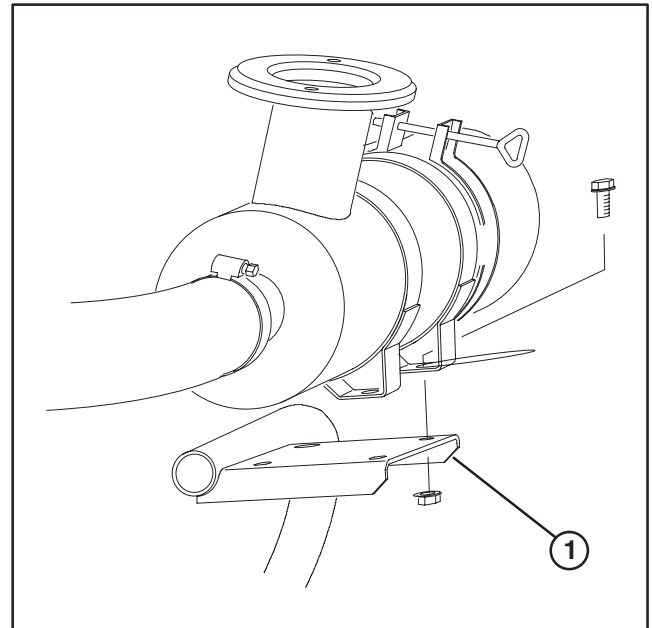
1. Open hood. Remove fasteners securing air cleaner mounting bands to muffler. Retain fasteners.
2. Using dimensions shown in figure 1, locate and drill (2) .406 dia. holes thru both walls of left rear frame tube.

**Figure 1**

3. Loosely mount air cleaner bracket to frame with (2) 3/8—16 X 3—1/4 inch lg. capscrews and flange nuts (Fig. 2 & 3).

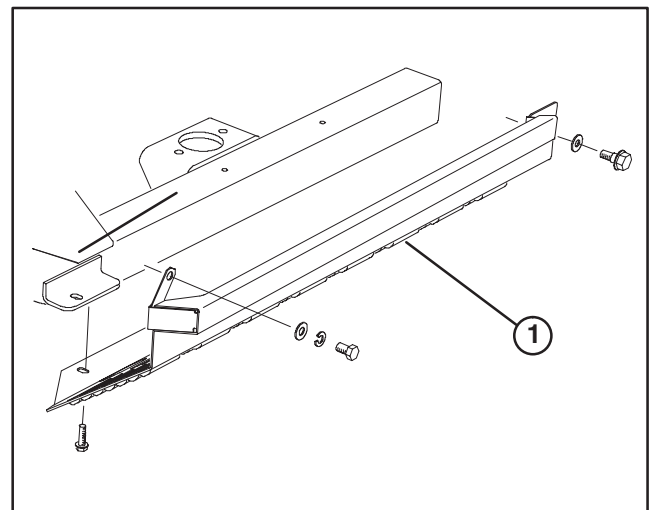
**Figure 2**
1. Air cleaner bracket

4. Secure air cleaner mounting bands to bracket with fasteners previously removed (Fig. 3).

**Figure 3**

1. Air cleaner bracket

5. Remove lower shroud from left rear side of machine (Fig. 4). Retain fasteners and shroud.

**Figure 4**

1. Lower shroud

6. Remove muffler, gaskets and muffler bracket from exhaust manifold or engine block (depending on which mounts are used on machine) (Fig. 5).

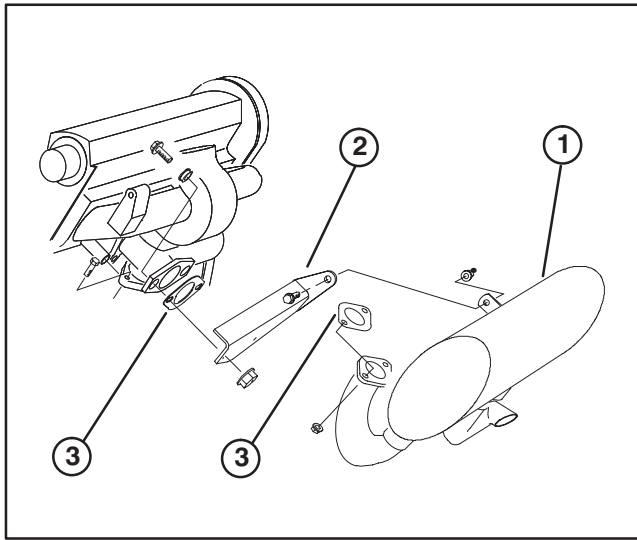


Figure 5

- 1. Muffler
- 2. Muffler bracket
- 3. Gasket

7. Remove fasteners securing air cleaner bracket to frame and re-mount front bracket to outside of air cleaner bracket and to frame with fasteners removed (Fig. 6).

8. Secure rubber mount to top of front bracket with flangenut and flatwasher provided with mount (Fig. 6). Flatwasher to be positioned between mount and bracket.

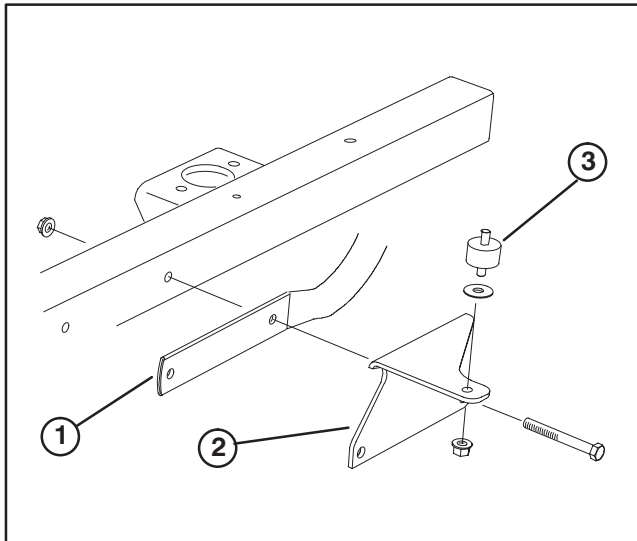


Figure 6

- 1. Air cleaner bracket
- 2. Front bracket
- 3. Rubber mount

9. Using dimensions shown in figure 7, locate and drill (2) .406" dia. holes in left side of radiator mount. Drill holes from the rear of the machine.

Note: Use caution when drilling so radiator is not damaged. Place a block of wood between mount and radiator when drilling.

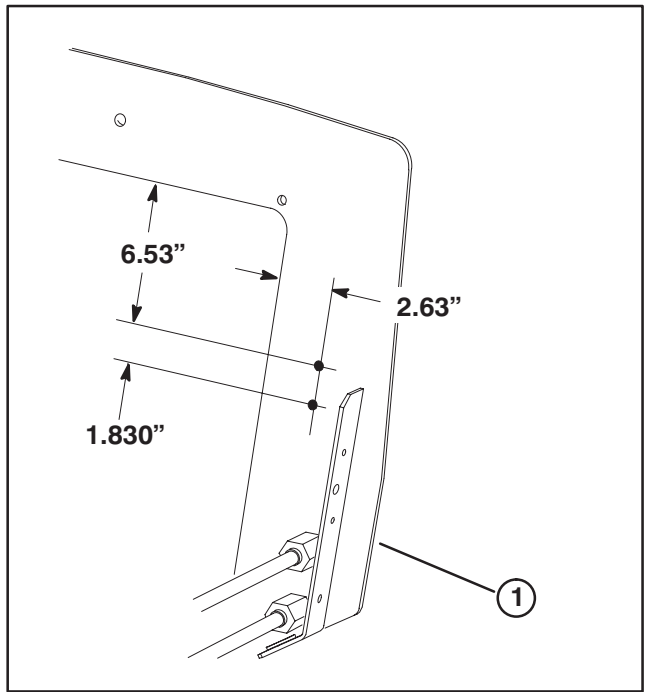


Figure 7

- 1. Radiator support

10. Mount support bracket to radiator mount with (2) 5/16–18 x 7/8" lg. capscrews, 3/16" thk. washers and locknuts. Insert a rubber grommet into hole of bracket (Fig. 8).

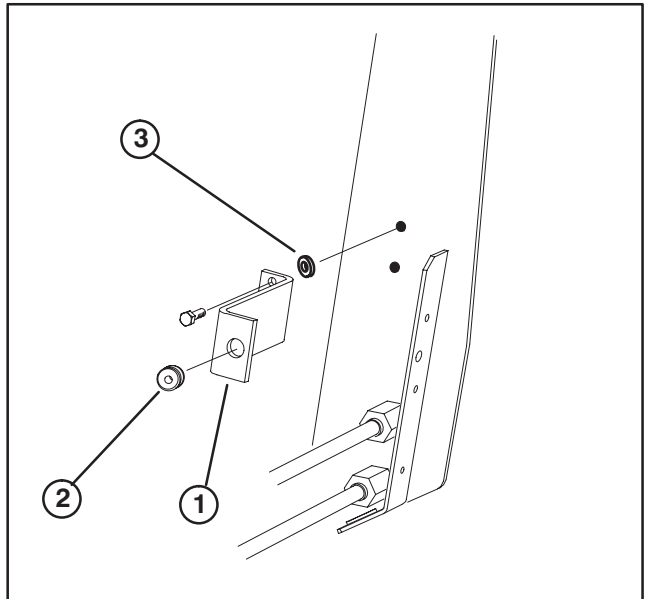


Figure 8

- 1. Support bracket
- 2. Rubber grommet
- 3. Washer – 3/16" thk.

11. Cover bottom exhaust port of manifold with a exhaust plate, gasket, (2) M8x20 capscrews and flangenuts (Fig. 9).

12. Disconnect, remove and replace water return tube and hose with new tube and hose (Fig. 9). Reuse existing hose clamps for installation of new components.

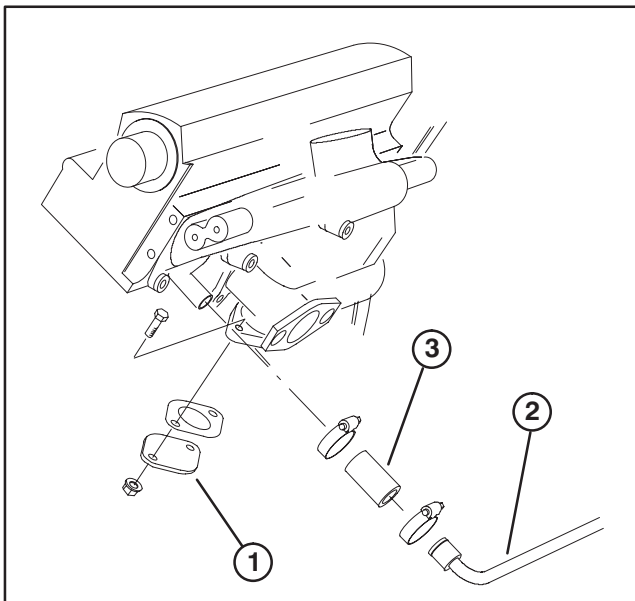


Figure 9

1. Exhaust cover
2. Water return tube
3. Hose

13. Disconnect, remove and replace hydraulic tube with new tube as shown in figure 10.

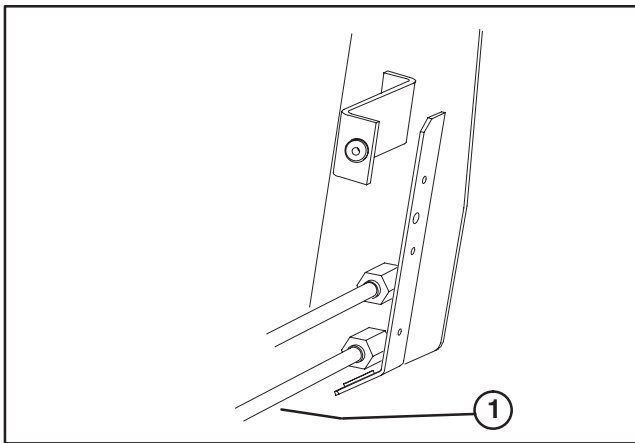


Figure 10

1. Replace this tube

14. Press exhaust flange sleeve into side port of engine exhaust manifold (Fig. 11). Insert exhaust coupler over sleeve so larger diameter is against manifold (Fig. 11).

15. Insert muffler rod thru grommet on support bracket while loosely securing muffler bracket to rubber mount on front bracket with a 5/16" flangenut.

16. Insert a flange bushing into each hole of engine exhaust manifold. Secure muffler to engine exhaust manifold with (2) round head bolts, washers, springs, spring cups and nuts as shown in figure 12 and inset. Make sure springs are compressed to .820 in.

17. Using dimension shown in figure 13, cut away shaded area in lower shroud to fit new muffler exhaust port location. Reinstall shroud.

18. Check all fluid levels and replenish as required.

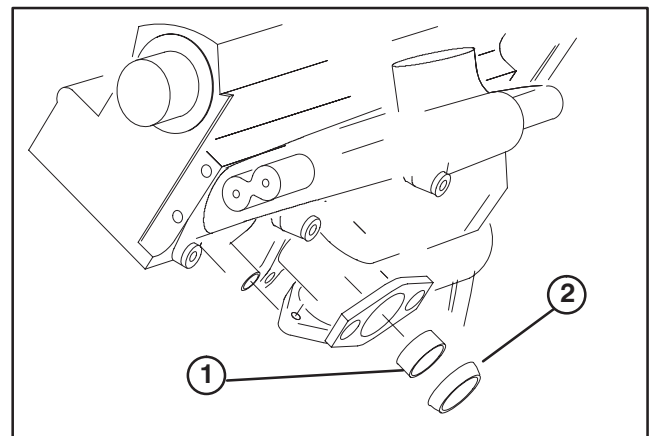


Figure 11

1. Exhaust flange sleeve
2. Exhaust coupler

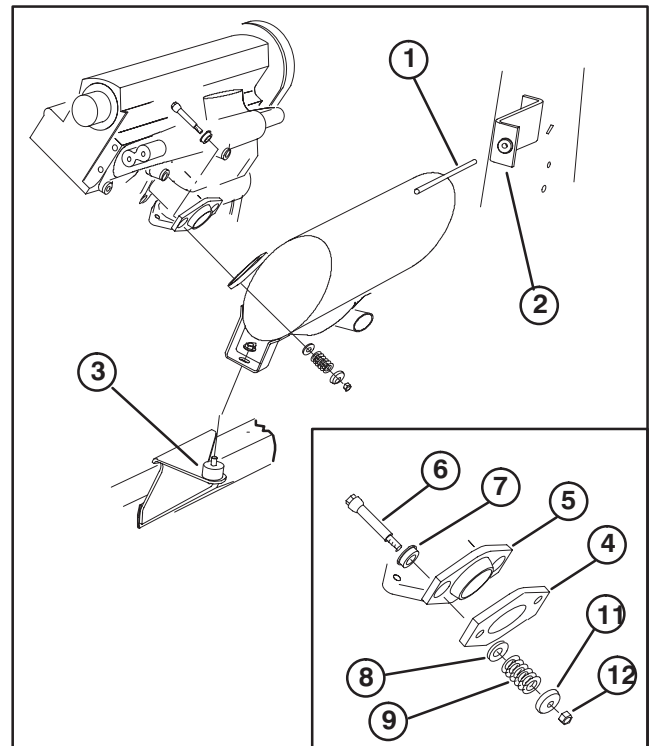


Figure 12

1. Muffler rod
2. Support bracket
3. Rubber grommet
4. Muffler
5. Engine
6. Round hd. bolt
7. Flange bushing
8. Washer
9. Spring
10. Spring cup
11. Nut

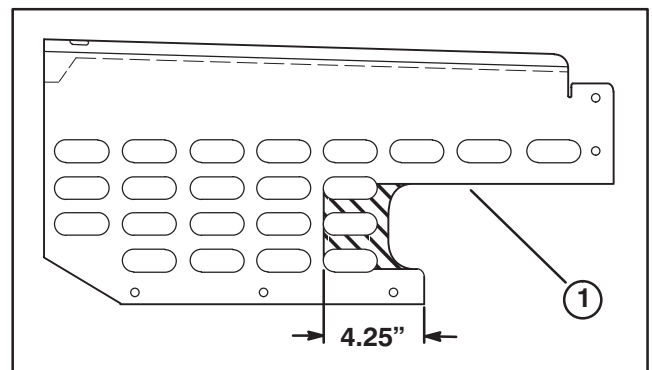


Figure 13

1. Lower shroud

