

TORO®

PART NO. 95-4355

INSTALLATION INSTRUCTIONS

AXLE REPLACEMENT KIT For Reelmaster® 3500/6500 & Groundsmaster® 455



CAUTION

Before servicing or making adjustments to the machine, stop engine and remove key from the switch.

DISASSEMBLY

Reelmaster 3500D & Groundsmaster 455 only

1. Position machine on a clean, level surface, stop engine, engage parking brake and remove key from ignition switch.
 2. Remove screen assembly from rear of machine.
 3. Remove weights from rear weight rack. Remove weight rack from machine. Retain all hardware for later use.
 4. Disconnect hydraulic motor from axle motor adapter.
- IMPORTANT:** Do not damage hydraulic hose assemblies when disconnecting motor from axle.
5. Disconnect hoses and tube assemblies mounted to axle pivot plates.
 6. Disconnect steering cylinder from axle.
 7. With rear of machine raised (not suspended by axle), remove wheels from rear axle.
 8. While supporting both ends of axle, remove capscrews securing axle pivot plates to frame. Remove axle and pivot plates from machine.

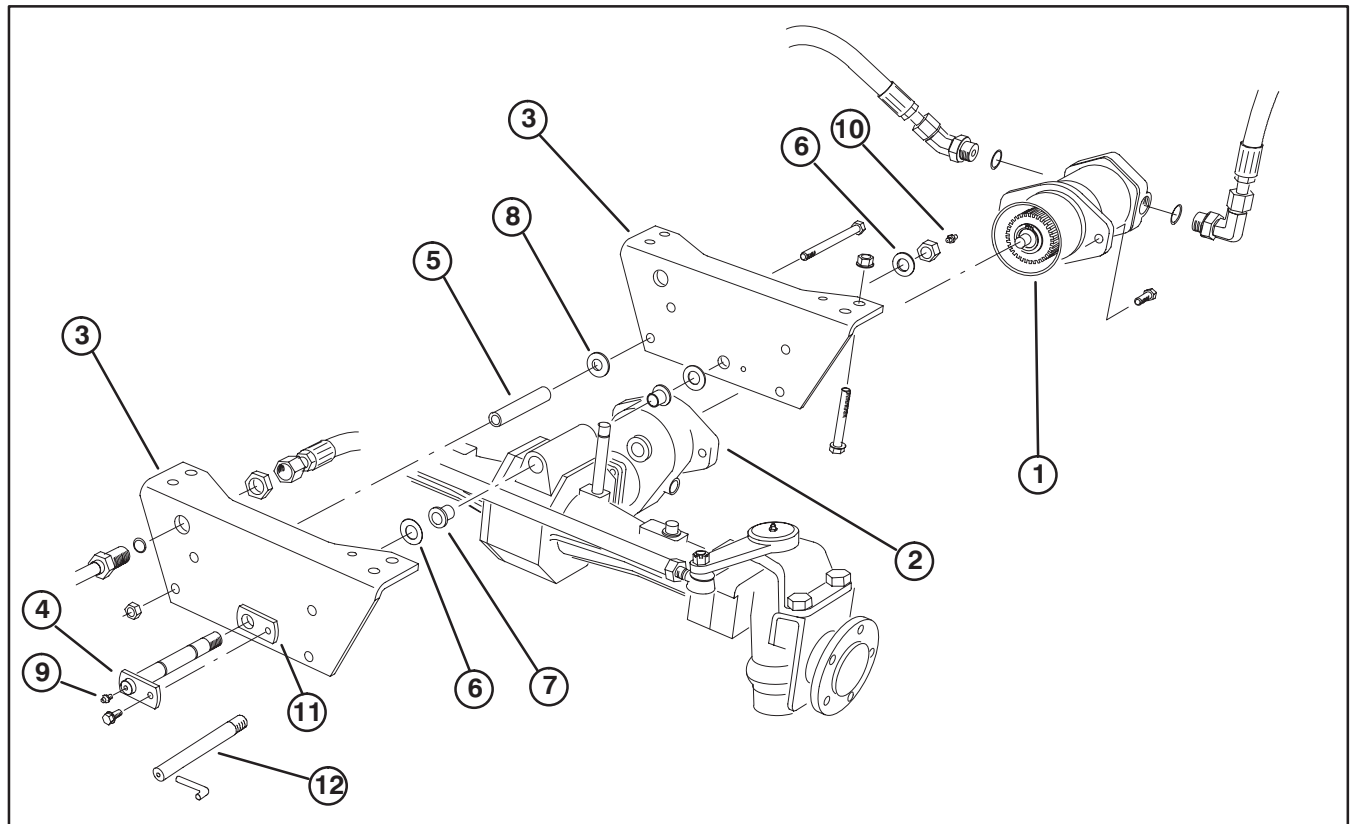


Figure 1

- | | |
|---------------------------------|------------------------------|
| 1. Hydraulic motor | 7. Flange bushing |
| 2. Axle motor adapter | 8. Flat washer |
| 3. Pivot plates | 9. Grease fitting (straight) |
| 4. Pivot pin (RM 3500 & GM 455) | 10. Grease fitting (90°) |
| 5. Axle stop (2) | 11. Small plate tabs |
| 6. Thrust washer | 12. Pivot pin (RM 6500) |

Reelmaster 6500D only

1. Position machine on a clean, level surface, stop engine, engage parking brake and remove key from ignition switch.
2. Remove screen assembly from rear of machine.
3. Remove bumper from rear of machine.
4. Disconnect hydraulic motor axle motor adapter.

IMPORTANT: Do not damage hydraulic hose assemblies when disconnecting motor from axle.

5. Disconnect steering cylinder from axle.
6. With rear of machine raised (not suspended by axle), remove wheels from rear axle.
7. While supporting both ends of axle, remove pivot pin securing axle to axle pivot plates. Remove axle from machine.
8. Drill out pivot pin hole in each pivot plate to .987" \pm .001 dia.. To avoid premature wear to pivot plates and pivot pin, make sure hole dia. is held as close as possible.

ASSEMBLY

Reelmaster 3500D & Groundsmaster 455 only

1. Assemble new axle pivot plates to axle with new hardware provided.. Make sure small plate tabs, welded to pivot plates are facing away from axle in front and rear.
2. Install axle assembly pivot plates to machine with capscrews provided.
3. Reconnect hoses and tube assemblies secured to axle pivot plates.
4. Reinstall weight rack to unit using existing hardware.

5. Secure pivot pin to axle plate with self tapping screw. Tighten all fasteners. Tighten lock nut, on axle pivot pin, so axle is free to rotate. Weight rack mounting bolts to be torqued to 100–110 ft–lbs (135–149 N•m).
6. Install straight grease fitting into front of pivot pin.
7. Install 90° grease fitting into rear of pivot pin.
8. Grease fittings with No. 2 General Purpose Lithium Base Grease until grease comes out bushings.
9. Reinstall hydraulic motor to axle motor adapter and connect all hoses.
10. Reinstall weights to weight rack with hardware previously removed.
11. Reinstall wheels to axle.
12. Check gear lube level in axle and replenish as necessary.

Reelmaster 6500D only

1. Mount axle assembly to pivot plates with new axle pivot pin and hardware provided. Tighten lock nut, on axle pivot pin, so axle is free to rotate.
2. Reinstall bumper to rear of machine.
3. Install axle stops to pivot plates with new hardware provided.
4. Install straight grease fitting into front of pivot pin.
5. Install 90° grease fitting into rear of pivot pin.
6. Grease fittings with No. 2 General Purpose Lithium Base Grease until grease comes out bushings.
7. Reinstall hydraulic motor to axle motor adapter and connect all hoses.
8. Reinstall wheels to axle.
9. Check gear lube level in axle and replenish as necessary.