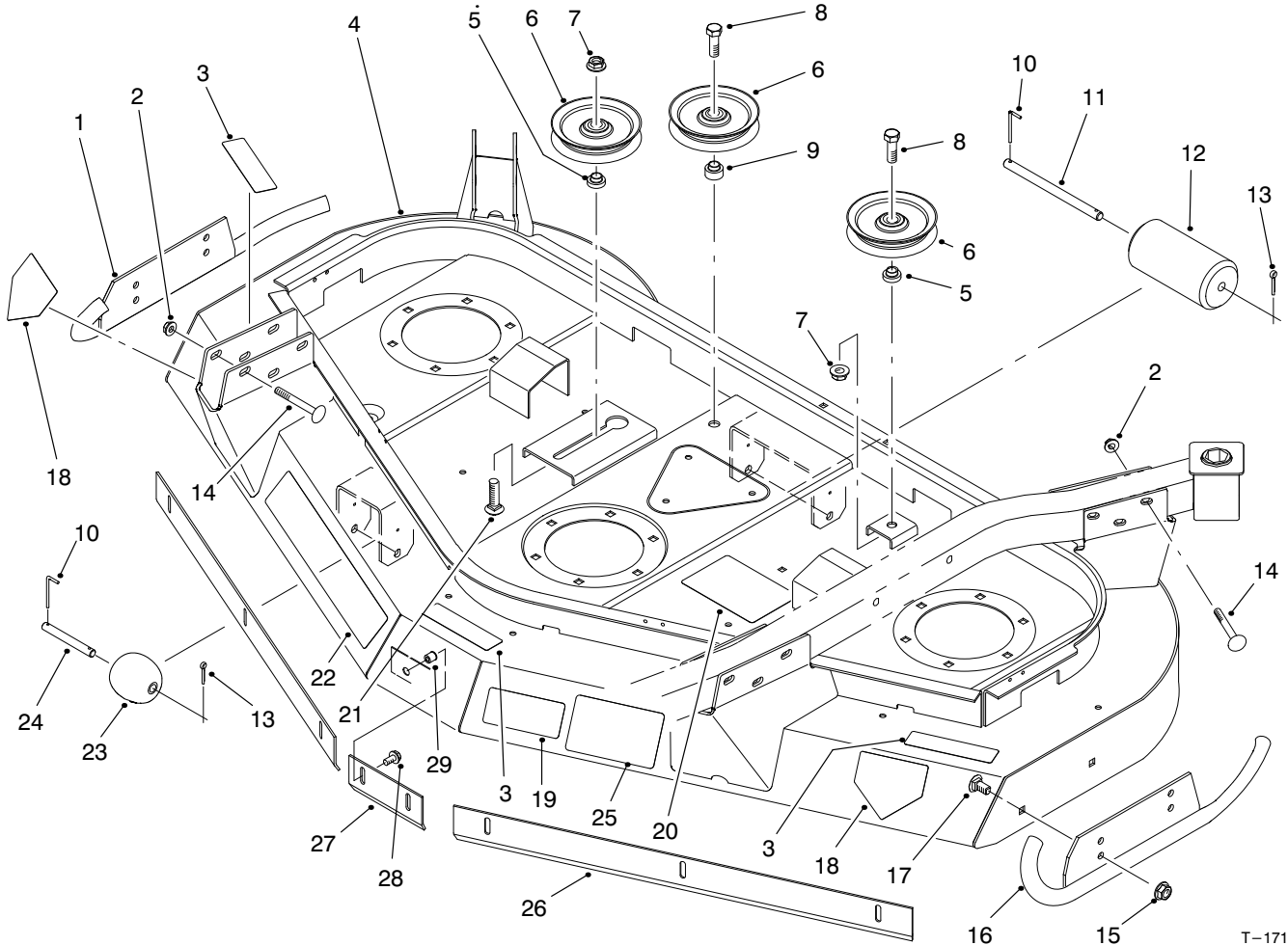




MODEL NO. 30569-60001 & UP
 MODEL NO. 30569TE-60001 & UP

**PARTS
 CATALOG**

**GUARDIAN® 62" RECYCLER®
 CUTTING UNIT**

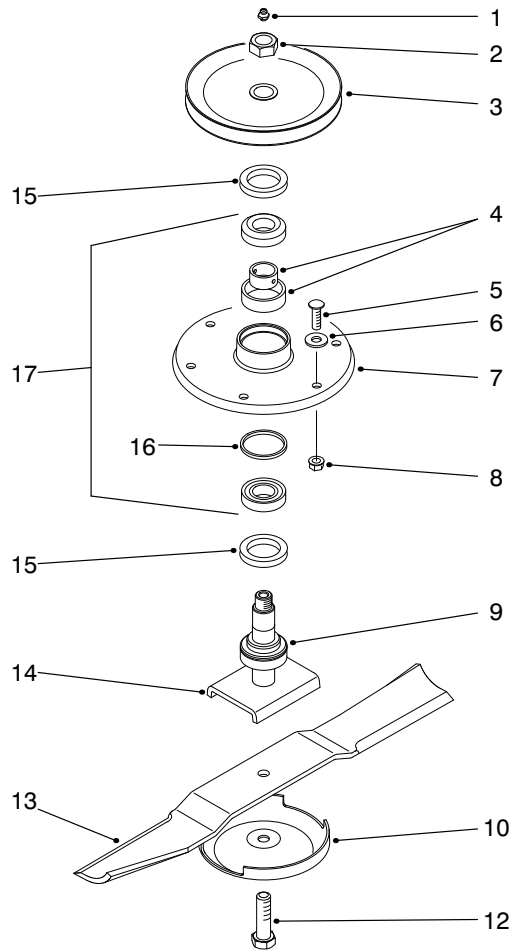


T-1711-1

HOUSING & IDLERS ASSEMBLY

Ref. No.	Part No.	Description	No. Used
1	92-5592	Skid - RH	1
2	32128-19	Nut - Flange Lock	12
3	85-6410	Decal - Danger	3
3	93-7814	Decal - Warning (Europe)	3
4	92-5571	Asm. - 62" Deck (Incl. Ref. #3, 18-20, 22 & 25)	1
5	69-6960	Spacer - Idler	2
6	63-1540	Pulley - Idler	3
7	32128-23	Nut - Flange Lock	2
8	325-6	Screw - HH	2
9	69-6970	Spacer - Idler	1
10	57-0690	Pin - Special	3
11	40-6400	Shaft - Roller	1
12	36-1740	Roller - Deck	1
13	3272-11	Pin - Cotter	3
14	3231-10	Bolt - Carriage	12
15	32128-21	Nut - Flange Lock	4

Ref. No.	Part No.	Description	No. Used
16	92-5589	Skid - LH	1
17	3231-1	Bolt - Carriage	4
18	43-8480	Decal - Danger	2
18	93-7815	Decal - Danger (Europe)	2
19	68-8340	Decal - Torque	1
19	93-7818	Decal - Torque (Europe)	1
20	92-4092	Decal - Belt Routing	1
21	3233-30	Bolt - Carriage	1
22	92-4088	Decal - Guardian	1
23	29-4820	Roller	2
24	57-0680	Shaft - Roller	2
25	92-5647	Decal - Warning	1
25	93-7810	Decal - Warning (Europe)	1
26	93-4388	Baffle - Side, (Europe)	2
27	93-4389	Baffle - Center (Europe)	1
28	3234-5	Screw - Flange (Europe)	8
29	32148-7	Nut - Clinch (Europe)	8



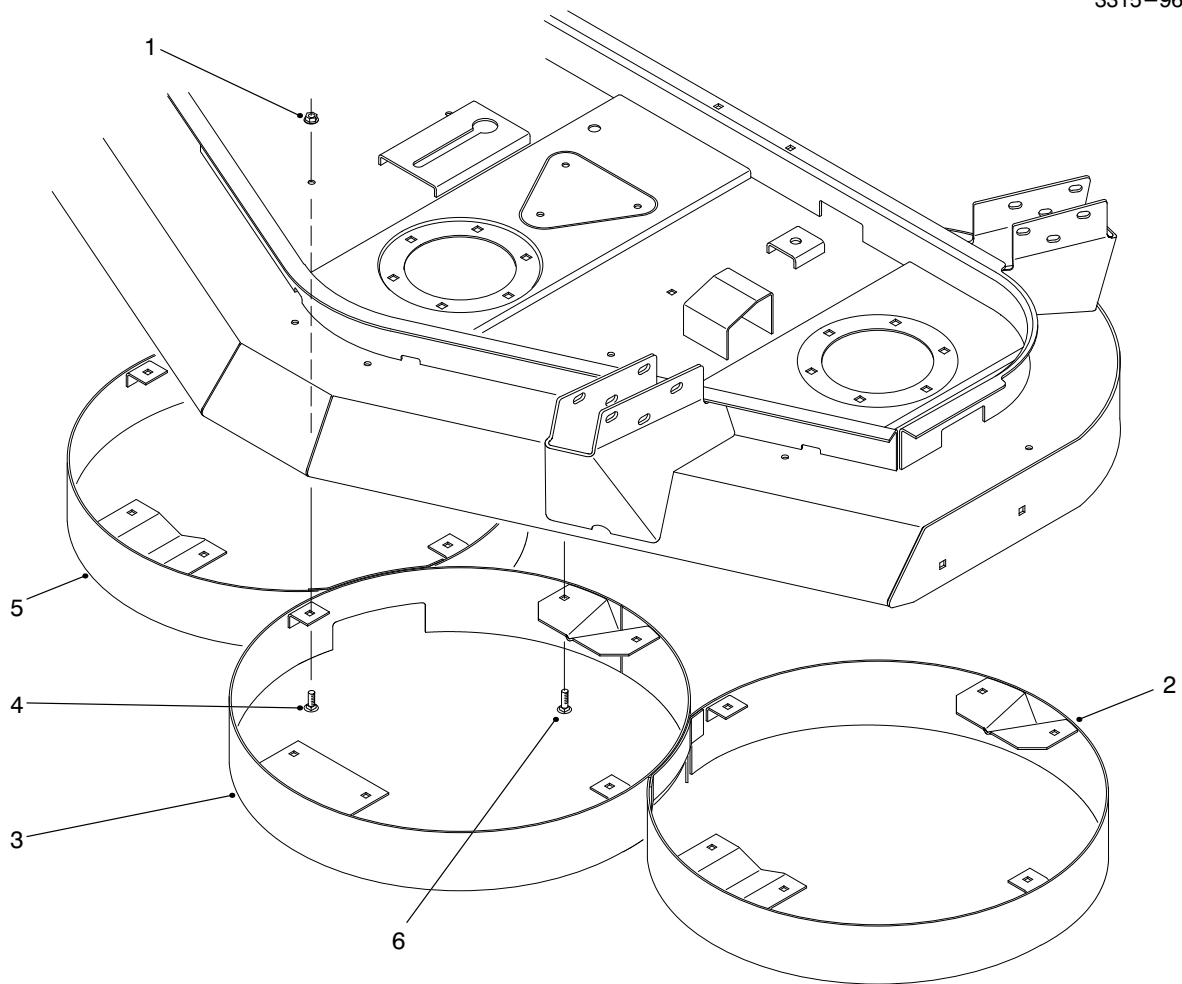
T-1709

SPINDLE ASSEMBLY

Ref. No.	Part No.	Description	No. Used
1	302-2	Fitting - Grease	3
2	32146-20	Nut - Lock	3
3	92-5607	Pulley	3
4	27-5970	Spacer Set	3
5	3231-27	Bolt - Carriage	18
6	3256-24	Washer - Flat	A/R
7	61-4160	Housing - Spindle	3
8	32128-21	Nut - Lock	18
9	92-5606	Spacer - Spindle	3
10	72-9361	Cup - Anti-Scalp	3
12	92-5816	Bolt - Blade	3

Ref. No.	Part No.	Description	No. Used
13	92-5608	Blade	3
14	92-5604	Spindle	3
15	253-139	Seal - Oil	6
16		Spacer	3
17	27-0960	Asm. - Bearing (Incl. Ref. #16)	3
*	95-3073	Kit - Blade & Belt (Incl Ref. #13)	1
*	95-3081	Spindle Assembly (Incl. Ref. #1-12 & 14-17)	1

*Not Illustrated

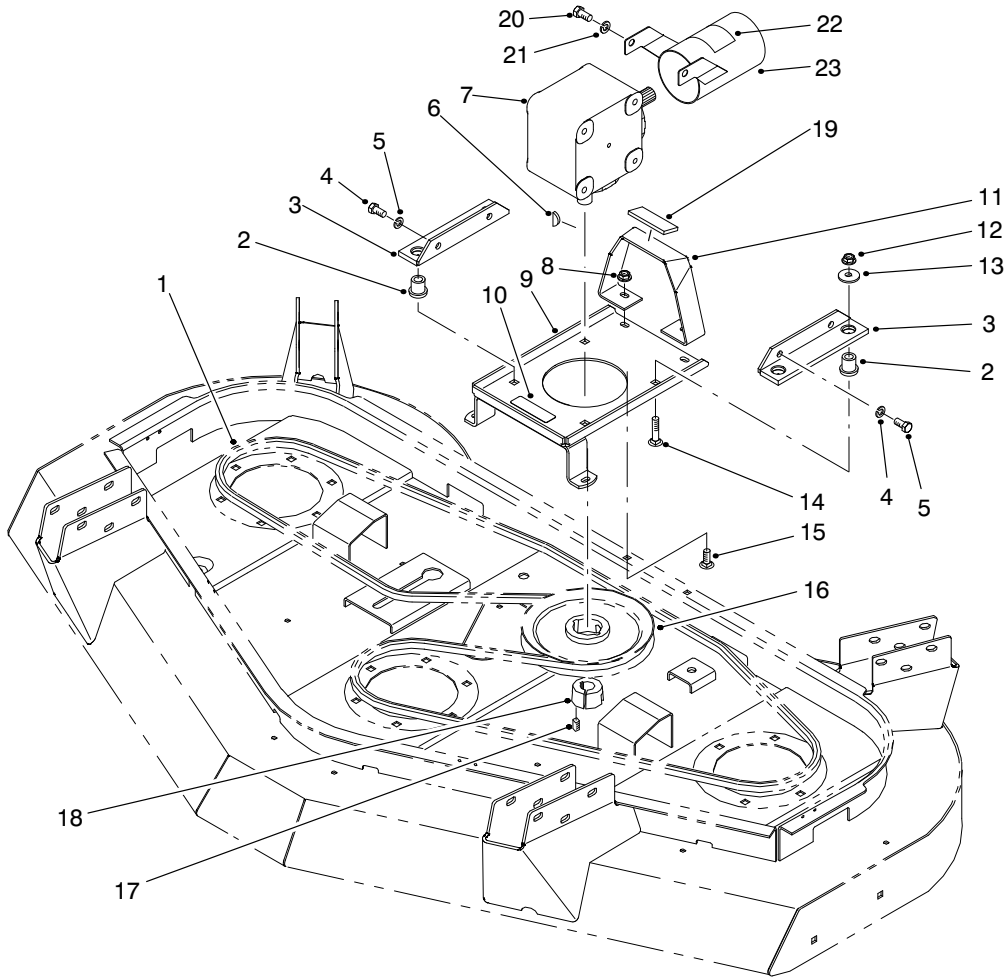


T-1708A

CUTTING CHAMBER INSTALLATION ASSEMBLY

Ref. No.	Part No.	Description	No. Used
1	32128-13	Nut - Flange Lock	18
2	92-5594	Chamber - Cutting LH	1
3	92-5600	Chamber - Cutting Center	1

Ref. No.	Part No.	Description	No. Used
4	3230-18	Bolt - Carriage	14
5	92-5602	Chamber - Cutting RH	1
6	3230-23	Bolt - Carriage	4



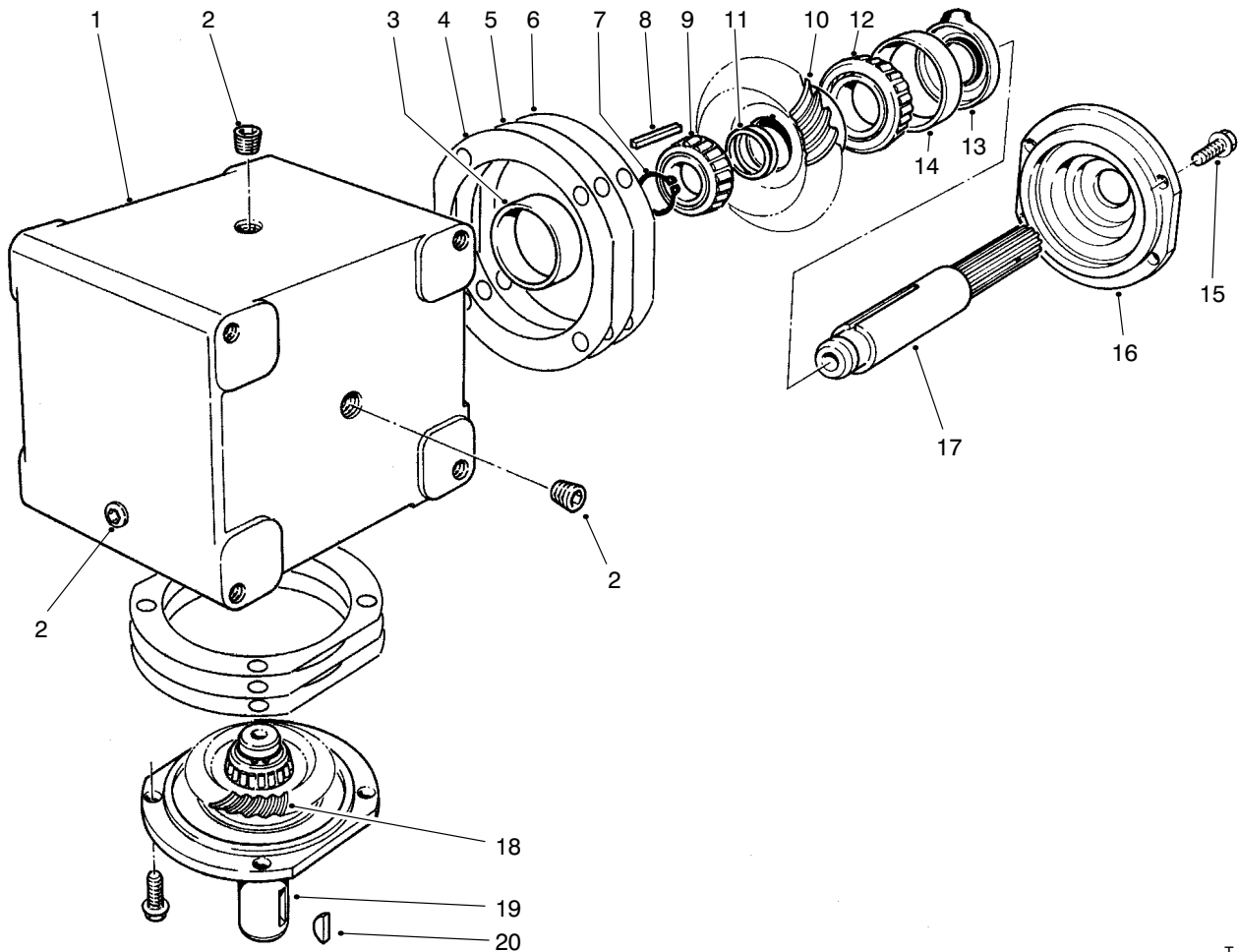
T-1710-1

GEAR BOX INSTALLATION ASSEMBLY

Ref. No.	Part No.	Description	No. Used
1	92-5588	Belt - V	1
2	63-9750	Mount	4
3	68-8560	Bracket - Gear Box	2
4	323-4	Screw - Cap Hex. Hd.	4
5	3253-21	Washer - Lock	4
6	3257-5	Key - Woodruff	1
7	68-6810	Asm. - Gear Box	1
8	32128-13	Nut - Flange Lock	4
9	92-5609	Asm. - Gear Box Plate (Incl. Ref. #10)	1
10	70-2560	Decal - Lube	1
10	93-6697	Decal - Lube (Europe)	1
11	92-5644	Asm. - Gear Box Stand (Incl. Ref. #19)	1
12	32128-21	Nut - Lock	4

Ref. No.	Part No.	Description	No. Used
13	63-8410	Washer	4
14	3231-26	Bolt - Carriage	4
15	3230-22	Bolt - Carriage	4
16	85-5860	Pulley - Gear Box	1
17	3247-4	Screw - Set	2
18	23-1640	Asm. - Taper Lock Bushing (Incl. Ref. #17)	1
19	74-0342	Cushion - Rubber	1
20	323-2	Screw - HH (Europe)	2
21	3253-21	Washer - Lock (Europe)	2
22	93-7283	Decal - Danger (Europe)	1
23	93-9826	Guard - PTO Shaft (Europe)	1
*	95-3073	Kit - Blade & Belt (Incl. Ref. #1)	1

*Not Illustrated

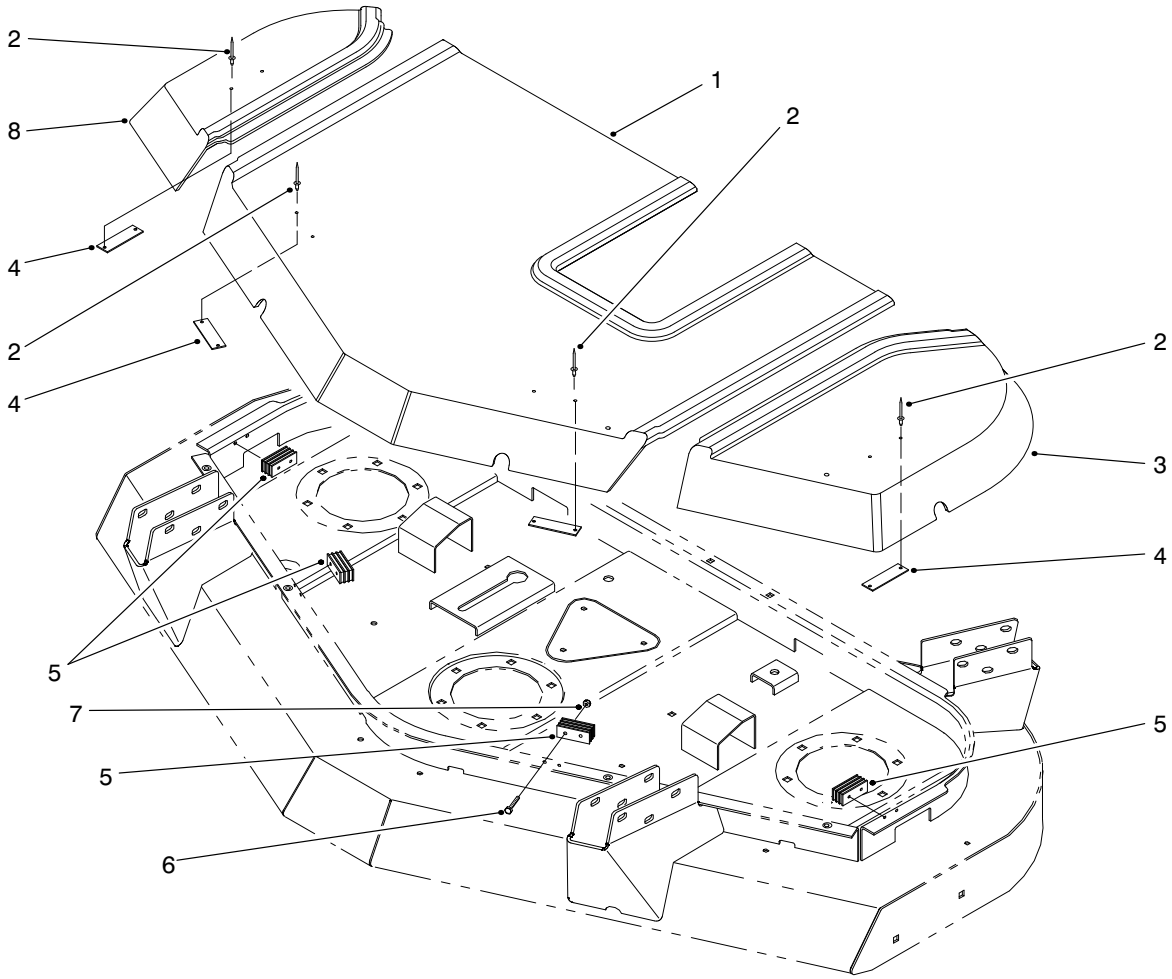


GEAR BOX ASSEMBLY NO. 68-6810

T-0977

Ref. No.	Part No.	Description	No. Used
1	68-7030	Housing	1
2	62-3490	Plug - Pipe (Solid)	4
3	62-3360	Cup - Bearing	2
4	62-3420	Gasket (.015 in.)	A/R
5	62-3430	Gasket (.005 in.)	A/R
6	62-3440	Gasket (.003 in.)	A/R
7	68-7070	Ring - Retaining	2
8	62-3380	Key	2
9	62-3370	Cone - Bearing	2
10	68-7080	Gear	1

Ref. No.	Part No.	Description	No. Used
11	72-9370	Shim (.020 in.)	2
12	62-3330	Cone - Bearing	2
13	62-3400	Seal	2
14	62-3340	Cup - Bearing	2
15	62-3310	Screw - HH	8
16	62-3410	Cap	2
17	68-7040	Shaft	1
18	68-7060	Gear	1
19	68-7050	Shaft	1
20	3257-5	Key	1

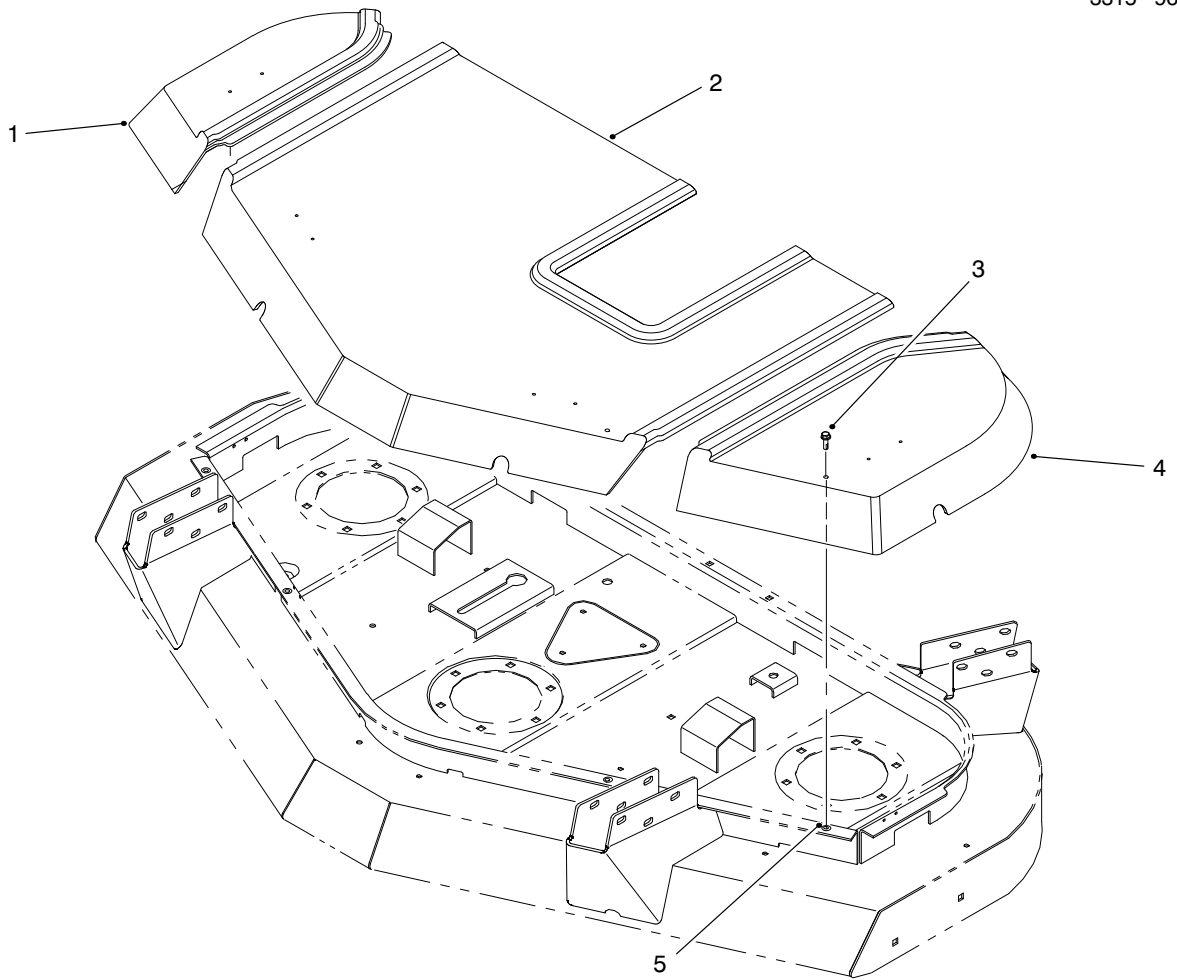


T-1713-3

COVER ASSEMBLY

Ref. No.	Part No.	Description	No. Used
1	92-5620	Cover - Center	1
2	3269-25	Rivet - Pop	8
3	92-5618	Cover - LH	1
4	69-6870	Plate - Magnet	8

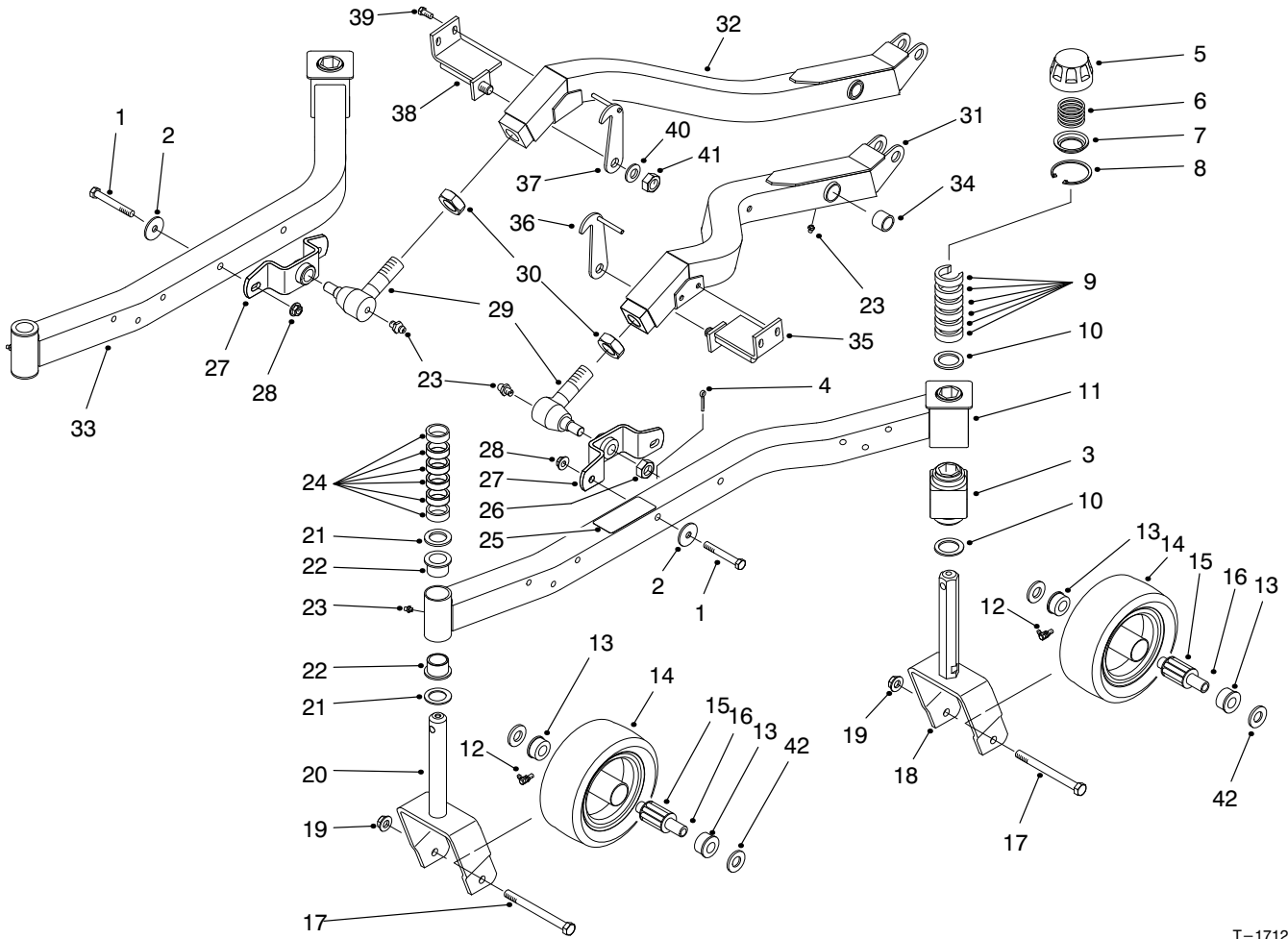
Ref. No.	Part No.	Description	No. Used
5	69-6260	Magnet	4
6	32105-1	Screw - HH	8
7	3296-2	Nut - Lock	8
8	92-5619	Cover - RH	1



T-2679-1

COVER ASSEMBLY (EUROPE)

Ref. No.	Part No.	Description	No. Used	Ref. No.	Part No.	Description	No. Used
1	92-5619	Cover - RH	1	4	92-5618	Cover - LH	1
2	92-5620	Cover - Center	1	5	32148-7	Nut - Clinch	4
3	3234-5	Screw - Flange	4				

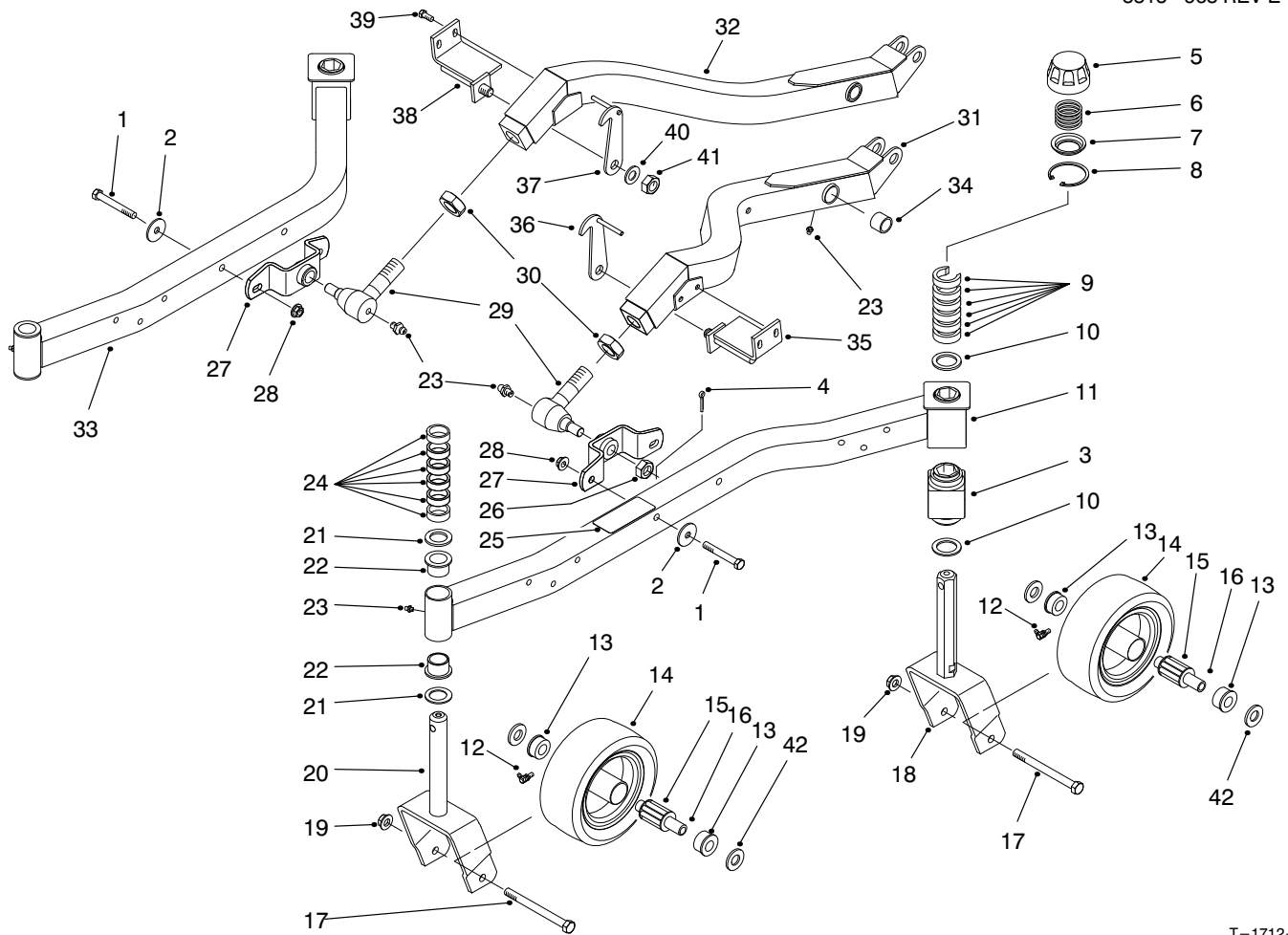


T-1712-1

CARRIER FRAME ASSEMBLY

Ref. No.	Part No.	Description	No. Used
1	324-12	Screw - HH	4
2	66-6480	Washer	4
3	93-8471	Bushing - Rubber	2
4	3272-12	Pin - Cotter	2
5	92-8861	Cap - H.O.C.	4
6	92-5584	Spring - Compression	4
7	92-5583	Washer - Cap	4
8	92-5581	Ring - Retaining	4
9	92-8866	Spacer	12
10	92-1765	Washer - Thrust	4
11	92-5573	Asm. - Caster Arm, LH (Incl. Ref. #3, 22, 23 & 25)	1
12	302-40	Fitting - Grease	4
13	62-5580	Bearing - Outer	8
14	85-5760	Asm. - Caster Wheel (Incl. Ref. #12, 13 & 15)	4
15	83-4740	Bearing - Roller	4
16	62-4340	Spanner	4
17	325-22	Screw - HH	4
18	92-5578	Fork - Caster Rear	2
19	32128-23	Nut - Flange Lock	4
20	92-5575	Fork - Caster Front	2
21	3-6781	Washer - Thrust	4
22	94-1291	Bushing - Flange	4
23	302-5	Fitting - Grease	6
24	63-0070	Spacer	12

Ref. No.	Part No.	Description	No. Used
25	92-4089	Decal - H.O.C.	1
25	93-7826	Decal - H.O.C. (Europe)	1
26	32136-2	Nut - Slotted	2
27	92-5616	Mount - Ball Joint	2
28	32128-42	Nut - Flange Lock	4
29	86-8100	Asm. - Ball Joint (Incl. Ref. #23 & 26)	2
30	21-3000	Nut - Jam	2
31	92-5625	Asm. - Lift Arm, LH (Incl. Ref. #23 & 34)	1
32	92-5627	Asm. - Lift Arm, RH (Incl. Ref. #23 & 34)	1
33	92-5623	Asm. - Caster Arm, RH (Incl. Ref. #3, 22 & 23)	1
34	92-5648	Bushing - Sleeve	4
35	93-9326	Bracket - Latch, LH (Europe)	1
36	93-8479	Retainer - Deck, LH (Europe)	1
37	93-8478	Retainer - Deck, RH (Europe)	1
38	93-9325	Bracket - Latch, RH (Europe)	1
39	32144-11	Screw - HH (Europe)	4
40	3290-317	Washer - Wave (Europe)	2
41	3296-33	Nut - Lock (Europe)	2

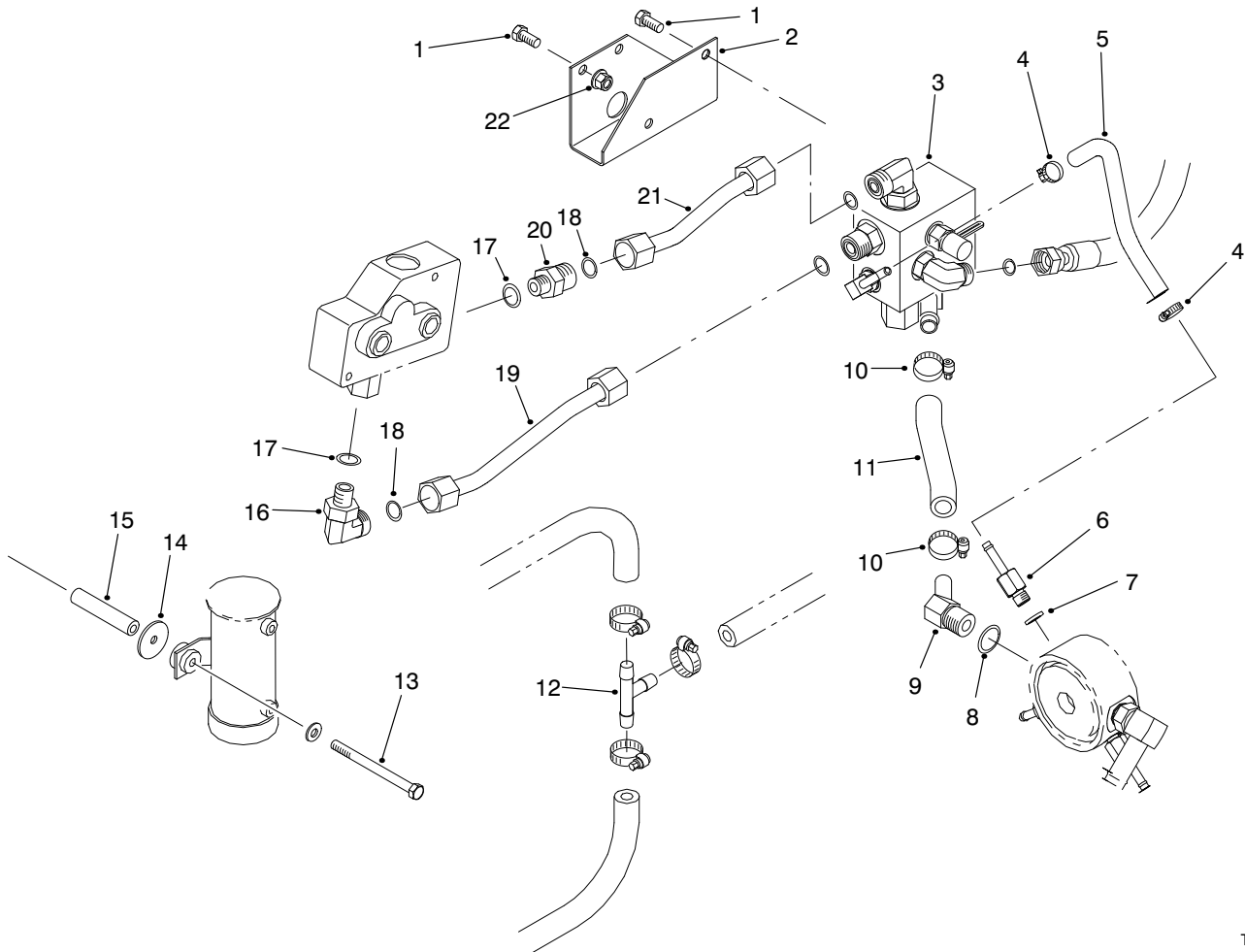


T-1712-1

CARRIER FRAME ASSEMBLY

Ref. No.	Part No.	Description	No. Used	Ref. No.	Part No.	Description	No. Used
42	3256-6	Washer - Flat	8	*	95-3076	Castor Wheel Set (4 Wheels) (Incl. Ref. #12-17, 19 & 42)	1
*	92-8862	Asm. - Cap, H.O.C. (Incl. Ref.#5-8)	1				

*Not Illustrated



T-1723

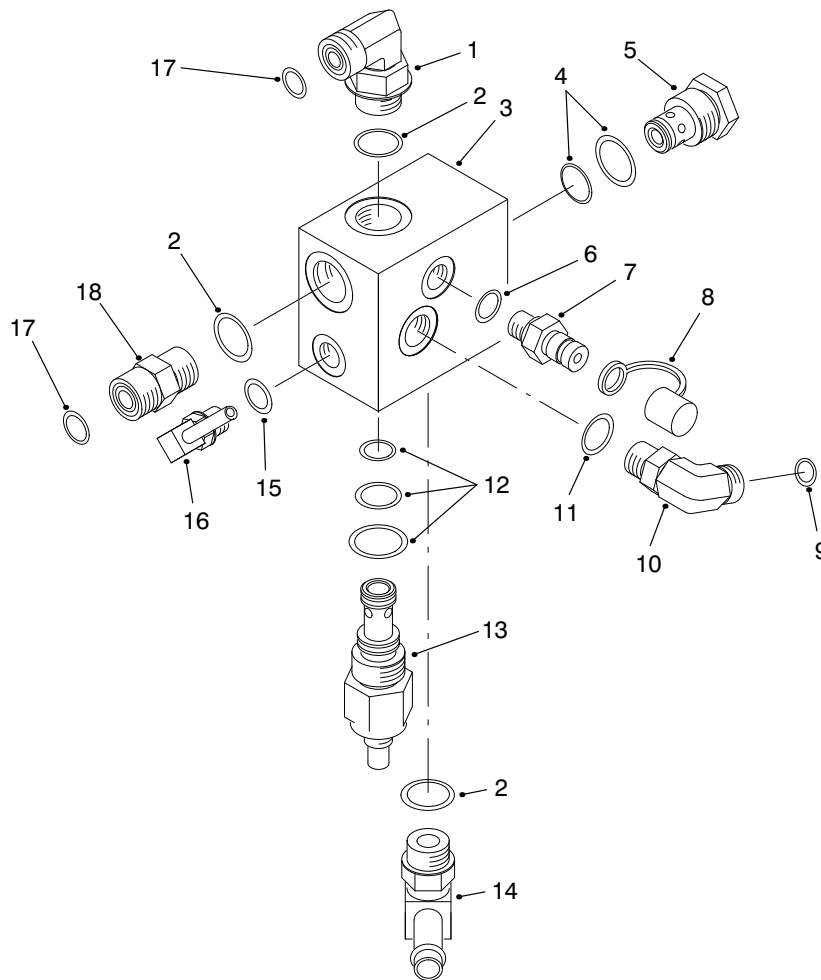
COUNTERBALANCE MANIFOLD INSTALLATION ASSEMBLY

Ref. No.	Part No.	Description	No. Used
1	3234-14	Screw - HH	4
2	92-5635	Bracket - Manifold	1
3	92-5638	Asm. - Manifold Block	1
4	2412-108	Clamp - Hose	2
5	65-2970	Hose - Hydraulic	1
6	92-5512	Fitting - Hydraulic Straight (Incl. Ref. #7)	1
7	237-78	O-Ring	1
8	237-79	O-Ring	1
9	354-126	Fitting - Hydraulic 90° (Incl. Ref. #8)	1
10	2412-36	Clamp - Hose	2
11	92-5639	Hose - Hydraulic	1
12	354-107	Fitting - Hydraulic Tee	1
13	321-24	Screw - HH	2

Ref. No.	Part No.	Description	No. Used
14	3256-55	Washer - Flat	2
15	92-5634	Spacer - Fuel Pump	2
16	340-99	Fitting - Hydraulic 90° (Incl. Ref. #17 & 18)	1
17	237-42	O-Ring	2
18	237-30	O-Ring	2
19	92-5637	Tube - Hydraulic	1
20	340-5	Fitting - Hydraulic Straight (Incl. Ref. #17 & 18)	1
21	92-5636	Tube - Hydraulic	1
22	32128-13	Nut - Flange Lock	2
*†	92-5640	Fitting - Hydraulic Cross (Incl. O-Ring No. 237-80) (For use on 2wd units only)	1

*Not Illustrated

†Item not included with cutting unit.



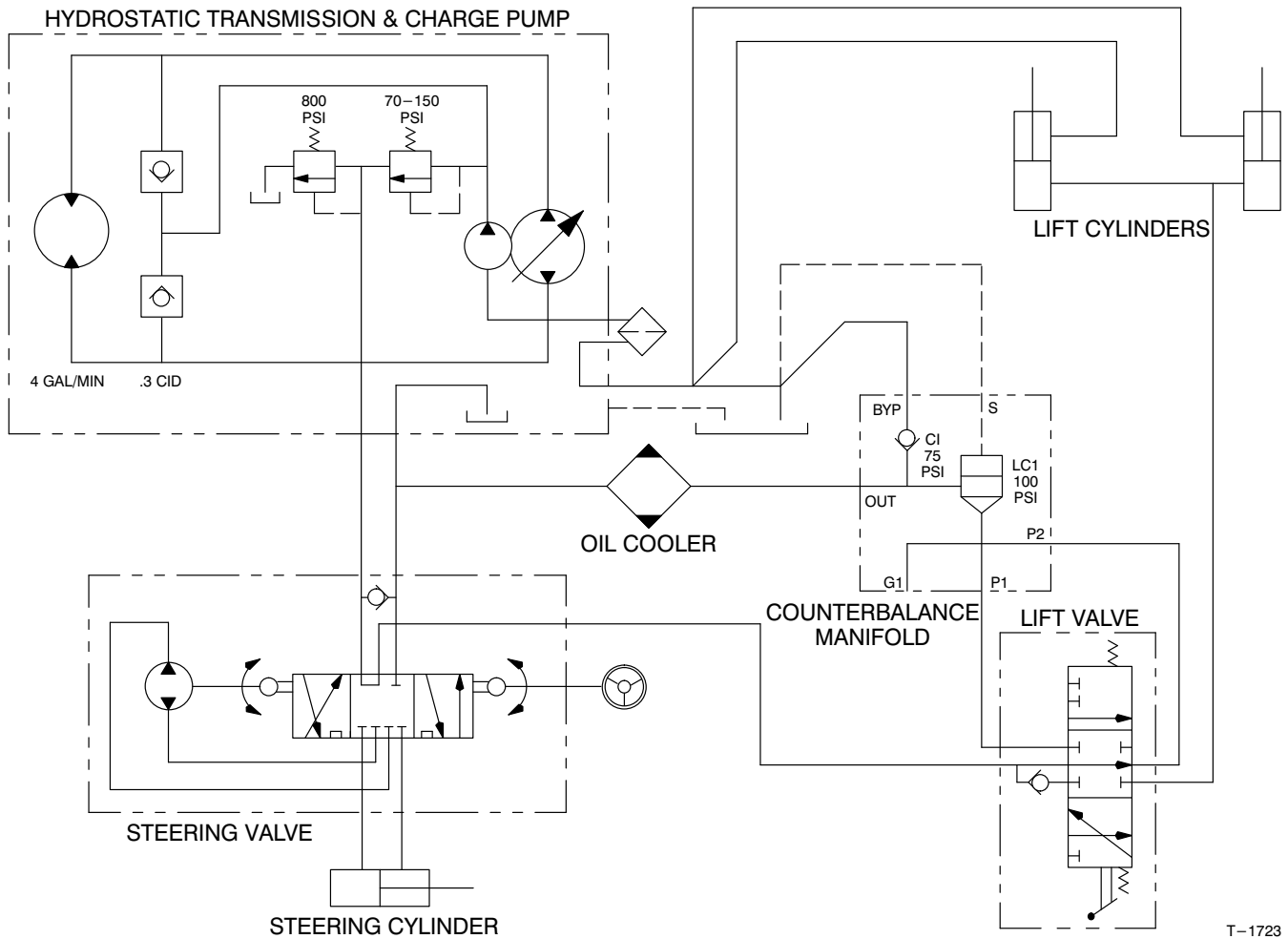
T-1722

COUNTERBALANCE MANIFOLD ASSEMBLY NO. 92-5638

Ref. No.	Part No.	Description	No. Used
1	340-98	Fitting - Hydraulic 90° (Incl. Ref. #2 & 17)	1
2	237-79	O-Ring	3
3		Block - Manifold	1
4	75-2080	Kit - Seal	1
5	92-5645	Asm. - Relief Cartridge (Incl. Ref. #4)	1
6	237-78	O-Ring	1
7	354-77	Fitting - Diagnostic (Incl. Ref. #6)	1
8	353-947	Cap - Dust	1
9	237-22	O-Ring	1
10	340-77	Fitting - Hydraulic 90° (Incl. Ref. #9 & 11)	1

Ref. No.	Part No.	Description	No. Used
11	237-42	O-Ring	1
12	69-4240	Kit - Seal	1
13	92-5646	Asm. - Logic Cartridge (Incl. Ref. #12)	1
14	354-120	Fitting - Hydraulic 90° (Incl. Ref. #2)	1
15	237-78	O-Ring	1
16	304-99	Fitting - Hydraulic 90° (Incl. Ref. #15)	1
17	237-30	O-Ring	2
18	340-4	Fitting - Hydraulic Straight (Incl. Ref. #2 & 17)	1

HYDROSTATIC TRANSMISSION & CHARGE PUMP



T-1723

HYDRAULIC SCHEMATIC

Ref. No.	Part No.	Description	No. Used

Ref. No.	Part No.	Description	No. Used

TORO PART NUMBER INDEX

3315-963 REV E

Part No.	Description	Pg. Ref. No. No.	Qty.	Part No.	Description	Pg. Ref. No. No.	Qty.		
3-6781	Washer - Thrust	8	21	4	92-5600	Chamber - Cutting Center	3	3	1
21-3000	Nut - Jam	8	30	2	92-5602	Chamber - Cutting RH	3	5	1
23-1640	Asm. - Taper Lock Bushing	4	18	1	92-5604	Spindle	2	14	3
27-0960	Asm. - Bearing	2	17	3	92-5606	Spacer - Spindle	2	9	3
27-5970	Spacer Set	2	4	3	92-5607	Pulley	2	3	3
29-4820	Roller	1	23	2	92-5608	Blade	2	13	3
36-1740	Roller - Deck	1	12	1	92-5609	Asm. - Gear Box Plate	4	9	1
40-6400	Shaft - Roller	1	11	1	92-5616	Mount - Ball Joint	8	27	2
43-8480	Decal - Danger	1	18	2	92-5618	Cover - LH	6	3	1
57-0680	Shaft - Roller	1	24	2	92-5618	Cover - LH	7	4	1
57-0690	Pin - Special	1	10	3	92-5619	Cover - RH	7	1	1
61-4160	Housing - Spindle	2	7	3	92-5619	Cover - RH	6	8	1
62-3310	Screw - HH	5	15	8	92-5620	Cover - Center	6	1	1
62-3330	Cone - Bearing	5	12	2	92-5620	Cover - Center	7	2	1
62-3340	Cup - Bearing	5	14	2	92-5623	Asm. - Caster Arm, RH	8	33	1
62-3360	Cup - Bearing	5	3	2	92-5625	Asm. - Lift Arm, LH	8	31	1
62-3370	Cone - Bearing	5	9	2	92-5627	Asm. - Lift Arm, RH	8	32	1
62-3380	Key	5	8	2	92-5634	Spacer - Fuel Pump	10	15	2
62-3400	Seal	5	13	2	92-5635	Bracket - Manifold	10	2	1
62-3410	Cap	5	16	2	92-5636	Tube - Hydraulic	10	21	1
62-3420	Gasket (.015 in.)	5	4	A/R	92-5637	Tube - Hydraulic	10	19	1
62-3430	Gasket (.005 in.)	5	5	A/R	92-5638	Asm. - Manifold Block	10	3	1
62-3440	Gasket (.003 in.)	5	6	A/R	92-5639	Hose - Hydraulic	10	11	1
62-3490	Plug - Pipe (Solid)	5	2	4	92-5640	Fitting - Hydraulic Cross	10	*	1
62-4340	Spanner	8	16	4	92-5644	Asm. - Gear Box Stand	4	11	1
62-5580	Bearing - Outer	8	13	8	92-5645	Asm. - Relief Cartridge	11	5	1
63-0070	Spacer	8	24	12	92-5646	Asm. - Logic Cartridge	11	13	1
63-1540	Pulley - Idler	1	6	3	92-5647	Decal - Warning	1	25	1
63-8410	Washer	4	13	4	92-5648	Bushing - Sleeve	8	34	4
63-9750	Mount	4	2	4	92-5816	Bolt - Blade	2	12	3
65-2970	Hose - Hydraulic	10	5	1	92-8861	Cap - H.O.C.	8	5	4
66-6480	Washer	8	2	4	92-8862	Asm. - Cap, H.O.C.	9	*	1
68-6810	Asm. - Gear Box	4	7	1	92-8866	Spacer	8	9	12
68-7030	Housing	5	1	1	93-4388	Baffle - Side, (Europe)	1	26	2
68-7040	Shaft	5	17	1	93-4389	Baffle - Center (Europe)	1	27	1
68-7050	Shaft	5	19	1	93-6697	Decal - Lube (Europe)	4	10	1
68-7060	Gear	5	18	1	93-7283	Decal - Danger (Europe)	4	22	1
68-7070	Ring - Retaining	5	7	2	93-7810	Decal - Warning (Europe)	1	25	1
68-7080	Gear	5	10	1	93-7814	Decal - Warning (Europe)	1	3	3
68-8340	Decal - Torque	1	19	1	93-7815	Decal - Danger (Europe)	1	18	2
68-8560	Bracket - Gear Box	4	3	2	93-7818	Decal - Torque (Europe)	1	19	1
69-4240	Kit - Seal	11	12	1	93-7826	Decal - H.O.C. (Europe)	8	25	1
69-6260	Magnet	6	5	4	93-8471	Bushing - Rubber	8	3	2
69-6870	Plate - Magnet	6	4	8	93-8478	Retainer - Deck, RH	8	37	1
69-6960	Spacer - Idler	1	5	2	93-8479	Retainer - Deck, LH	8	36	1
69-6970	Spacer - Idler	1	9	1	93-9325	Bracket - Latch, RH	8	38	1
70-2560	Decal - Lube	4	10	1	93-9326	Bracket - Latch, LH	8	35	1
72-9361	Cup - Anti-Scalp	2	10	3	93-9826	Guard - PTO Shaft (Europe)	4	23	1
72-9370	Shim (.020 in.)	5	11	2	94-1291	Bushing - Flange	8	22	4
74-0342	Cushion - Rubber	4	19	1	95-3073	Kit - Blade & Belt	2	*	1
75-2080	Kit - Seal	11	4	1	95-3073	Kit - Blade & Belt	4	*	1
83-4740	Bearing - Roller	8	15	4	95-3076	Castor Wheel Set	9	*	1
85-5760	Asm. - Caster Wheel	8	14	4	95-3081	Spindle Assembly	2	*	1
85-5860	Pulley - Gear Box	4	16	1	237-22	O-Ring	11	9	1
85-6410	Decal - Danger	1	3	3	237-30	O-Ring	11	17	2
86-8100	Asm. - Ball Joint	8	29	2	237-30	O-Ring	10	18	2
92-1765	Washer - Thrust	8	10	4	237-42	O-Ring	11	11	1
92-4088	Decal - Guardian	1	22	1	237-42	O-Ring	10	17	2
92-4089	Decal - H.O.C.	8	25	1	237-78	O-Ring	11	6	1
92-4092	Decal - Belt Routing	1	20	1	237-78	O-Ring	10	7	1
92-5512	Fitting - Hydraulic Straight	10	6	1	237-78	O-Ring	11	15	1
92-5571	Asm. - 62 Deck	1	4	1	237-79	O-Ring	11	2	3
92-5573	Asm. - Caster Arm, LH	8	11	1	237-79	O-Ring	10	8	1
92-5575	Fork - Caster Front	8	20	2	2412-36	Clamp - Hose	10	10	2
92-5578	Fork - Caster Rear	8	18	2	2412-108	Clamp - Hose	10	4	2
92-5581	Ring - Retaining	8	8	4	253-139	Seal - Oil	2	15	6
92-5583	Washer - Cap	8	7	4	302-2	Fitting - Grease	2	1	3
92-5584	Spring - Compression	8	6	4	302-5	Fitting - Grease	8	23	6
92-5588	Belt - V	4	1	1	302-40	Fitting - Grease	8	12	4
92-5589	Skid - LH	1	16	1	304-99	Fitting - Hydraulic 90°	11	16	1
92-5592	Skid - RH	1	1	1	321-24	Screw - HH	10	13	2
92-5594	Chamber - Cutting LH	3	2	1	323-2	Screw - HH (Europe)	4	20	2

*Not Illustrated

TORO PART NUMBER INDEX (Cont.)

Part No.	Description	Pg. No.	Ref. No.	Qty.	Part No.	Description	Pg. No.	Ref. No.	Qty.
323-4	Screw - Cap Hex. Hd.	4	4	4	3296-33	Nut - Lock (Europe)	8	41	2
324-12	Screw - HH	8	1	4	32105-1	Screw - HH	6	6	8
325-6	Screw - HH	1	8	2	32128-13	Nut - Flange Lock	3	1	18
325-22	Screw - HH	8	17	4	32128-13	Nut - Flange Lock	4	8	4
3230-18	Bolt - Carriage	3	4	14	32128-13	Nut - Flange Lock	10	22	2
3230-22	Bolt - Carriage	4	15	4	32128-19	Nut - Flange Lock	1	2	12
3230-23	Bolt - Carriage	3	6	4	32128-21	Nut - Flange Lock	1	15	4
3231-1	Bolt - Carriage	1	17	4	32128-21	Nut - Lock	2	8	18
3231-10	Bolt - Carriage	1	14	12	32128-21	Nut - Lock	4	12	4
3231-26	Bolt - Carriage	4	14	4	32128-23	Nut - Flange Lock	1	7	2
3231-27	Bolt - Carriage	2	5	18	32128-23	Nut - Flange Lock	8	19	4
3233-30	Bolt - Carriage	1	21	1	32128-42	Nut - Flange Lock	8	28	4
3234-5	Screw - Flange	7	3	4	32136-2	Nut - Slotted	8	26	2
3234-5	Screw - Flange (Europe)	1	28	8	32144-11	Screw - HH (Europe)	8	39	4
3234-14	Screw - HH	10	1	4	32146-20	Nut - Lock	2	2	3
3247-4	Screw - Set	4	17	2	32148-7	Nut - Clinch	7	5	4
3253-21	Washer - Lock	4	5	4	32148-7	Nut - Clinch (Europe)	1	29	8
3253-21	Washer - Lock (Europe)	4	21	2	340-4	Fitting - Hydraulic Straight	11	18	1
3256-6	Washer - Flat	9	42	8	340-5	Fitting - Hydraulic Straight	10	20	1
3256-24	Washer - Flat	2	6	A/R	340-77	Fitting - Hydraulic 90°	11	10	1
3256-55	Washer - Flat	10	14	2	340-98	Fitting - Hydraulic 90°	11	1	1
3257-5	Key	5	20	1	340-99	Fitting - Hydraulic 90°	10	16	1
3257-5	Key - Woodruff	4	6	1	353-947	Cap - Dust	11	8	1
3269-25	Rivet - Pop	6	2	8	354-77	Fitting - Diagnostic	11	7	1
3272-11	Pin - Cotter	1	13	3	354-107	Fitting - Hydraulic Tee	10	12	1
3272-12	Pin - Cotter	8	4	2	354-120	Fitting - Hydraulic 90°	11	14	1
3290-317	Washer - Wave (Europe)	8	40	2	354-126	Fitting - Hydraulic 90°	10	9	1
3296-2	Nut - Lock	6	7	8					

PRODUCT CHANGES

In an effort to make improvements available to TORO owners as quickly as possible, minor changes are incorporated into Toro's products from time to time that do not become immediately shown in the Parts Catalog. If such a change has been made in your unit, which is not reflected in your manual, see your TORO Distributor or his Authorized TORO Service Dealer for information and part numbers.

IDENTIFICATION AND ORDERING

MODEL AND SERIAL NUMBERS

The Groundsmaster 345 has two identification numbers; a model number and a serial number. The two numbers are stamped on a plate which is located on the main frame under the seat. In any correspondence concerning the Groundsmaster 345, supply model and serial numbers to assure that correct information and replacement parts are obtained.

To order replacement parts from an Authorized TORO Service Dealer, supply the following information:

1. Model and serial number of the Groundsmaster 345.
2. Part number, description, and the quantity of part(s) desired.

NOTE: Do not order by reference number if a parts catalog is being used; use the PART NUMBER.

TABLE OF CONTENTS

Description	Page	Description	Page
Housing & Idlers Assembly	1	Carrier Frame Assembly	8-9
Spindle Assembly	2	Counterbalance Manifold	
Cutting Chambers Installation Assembly	3	Installation Assembly	10
Gear Box Installation Assembly	4	Counterbalance Manifold Assembly	
Gear Box Assembly No. 68-6810	5	No. 92-5638	11
Cover Assembly	6	Hydraulic Schematic	12
Cover Assembly (Europe)	7	TORO Part Number Index	13-14

