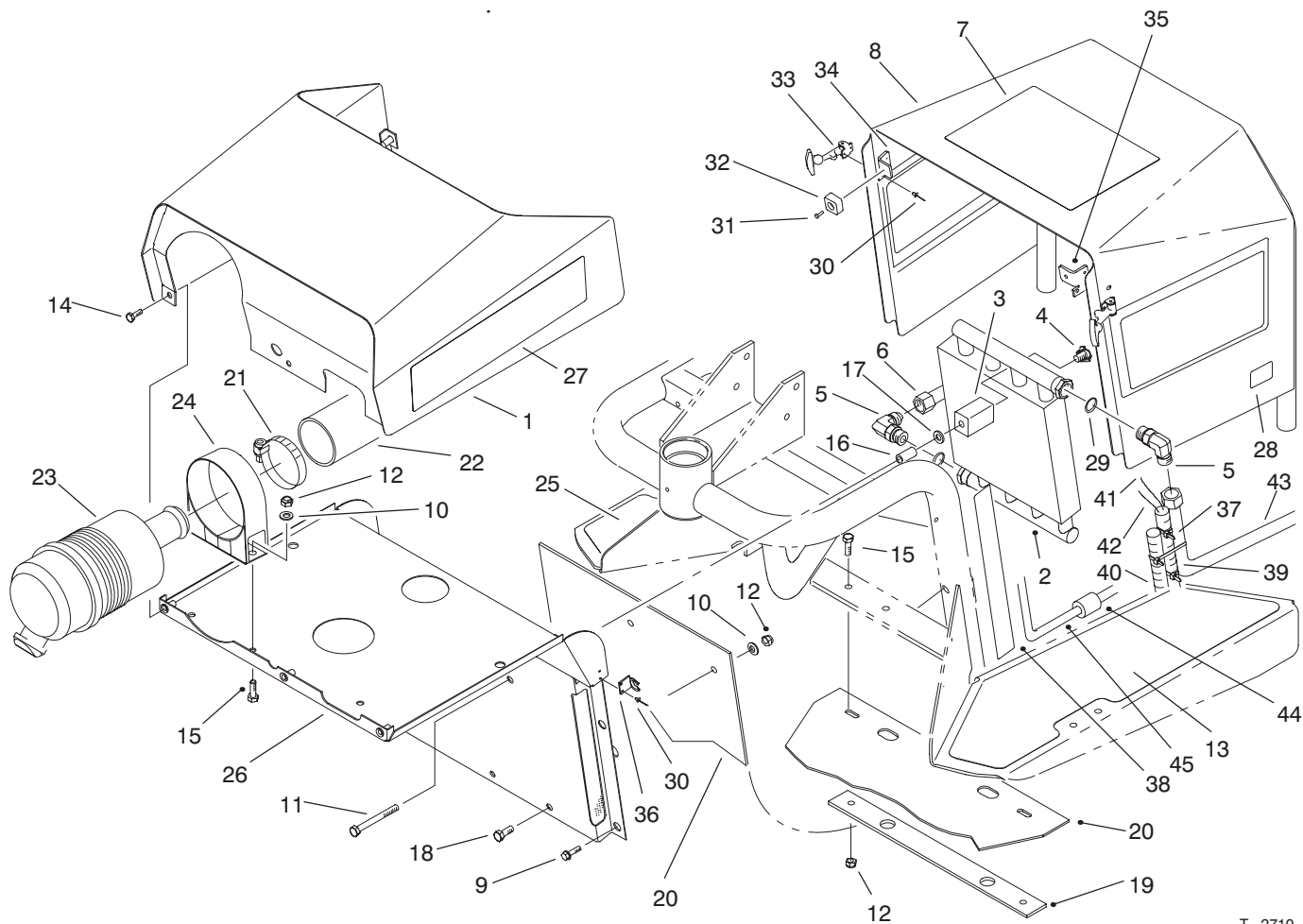




MODEL NO. 08885-70001 & UP	PARTS CATALOG
SAND PRO 3020	

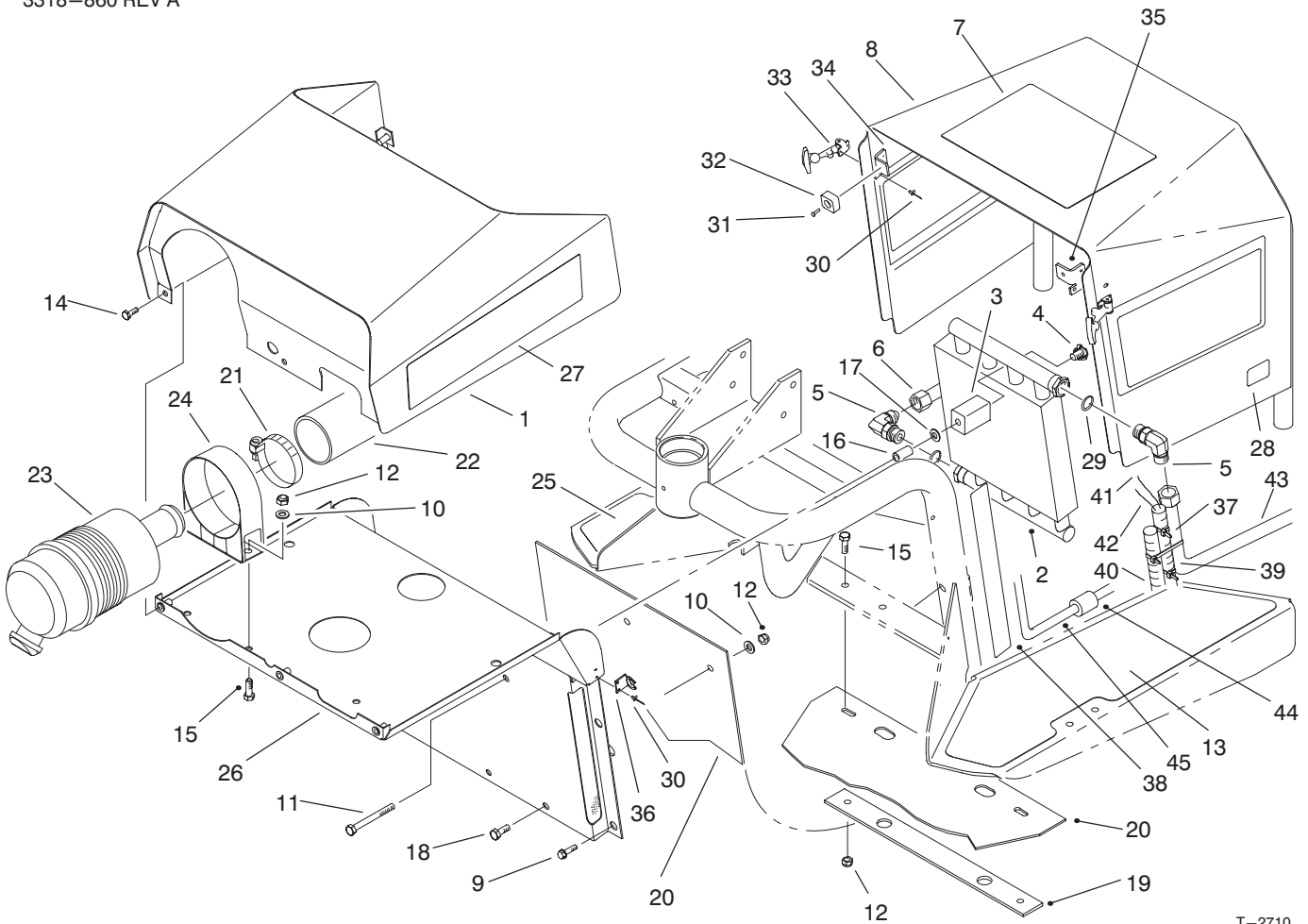


T-2710

SHROUDING & OIL COOLER ASSEMBLY

Ref. No.	Part No.	Description	No. Used
1	95-5818	Hood	1
2	92-8997	Cooler - Oil	1
3	85-9550	Clamp - Rubber	2
4	85-9670	T-Nut	2
5	353-371	Fitting - Hydraulic 90° (Incl. Ref. #29)	2
6	95-0643	Tube - Valve to Cooler	1
7	92-8985	Decal - Operating	1
8	95-0610	Asm-Cover (Incl. Ref. #7, 28, & 30-35)	1
9	46-8560	Screw - HFH	6
10	3256-23	Washer - Flat	4
11	322-14	Screw - HH	2
12	3296-29	Nut - Lock	6
13	92-7159	Tread - Floor, LH	1
14	3234-33	Screw - HFH	3
15	322-5	Screw - HH	4
16	95-5807	Spacer	2

Ref. No.	Part No.	Description	No. Used
17	3256-82	Washer - Flat	2
18	322-2	Screw - HH	2
19	95-0620	Strip - Retainer	1
20	95-5826	Shield - Rubber	1
21	2412-92	Clamp - Hose	2
22	95-0582	Hose - Air	1
23	95-5805	Asm-Air Cleaner	1
24	95-5806	Asm-Band, Mounting	1
25	92-7158	Tread - Floor, RH	1
26	95-5817	Shield - Front (Incl. Ref. #30 & 36)	1
27	95-0607	Decal - SandPro 3020	2
28	93-7252	Decal - CE Mark	1
29	237-79	O-Ring	2
30	3269-8	Rivet - Pop	6
31	3295-26	Rivet - Semi Tubular	2
32	94-1392	Pad - Rubber	2
33	117344	Handle - Latch	2



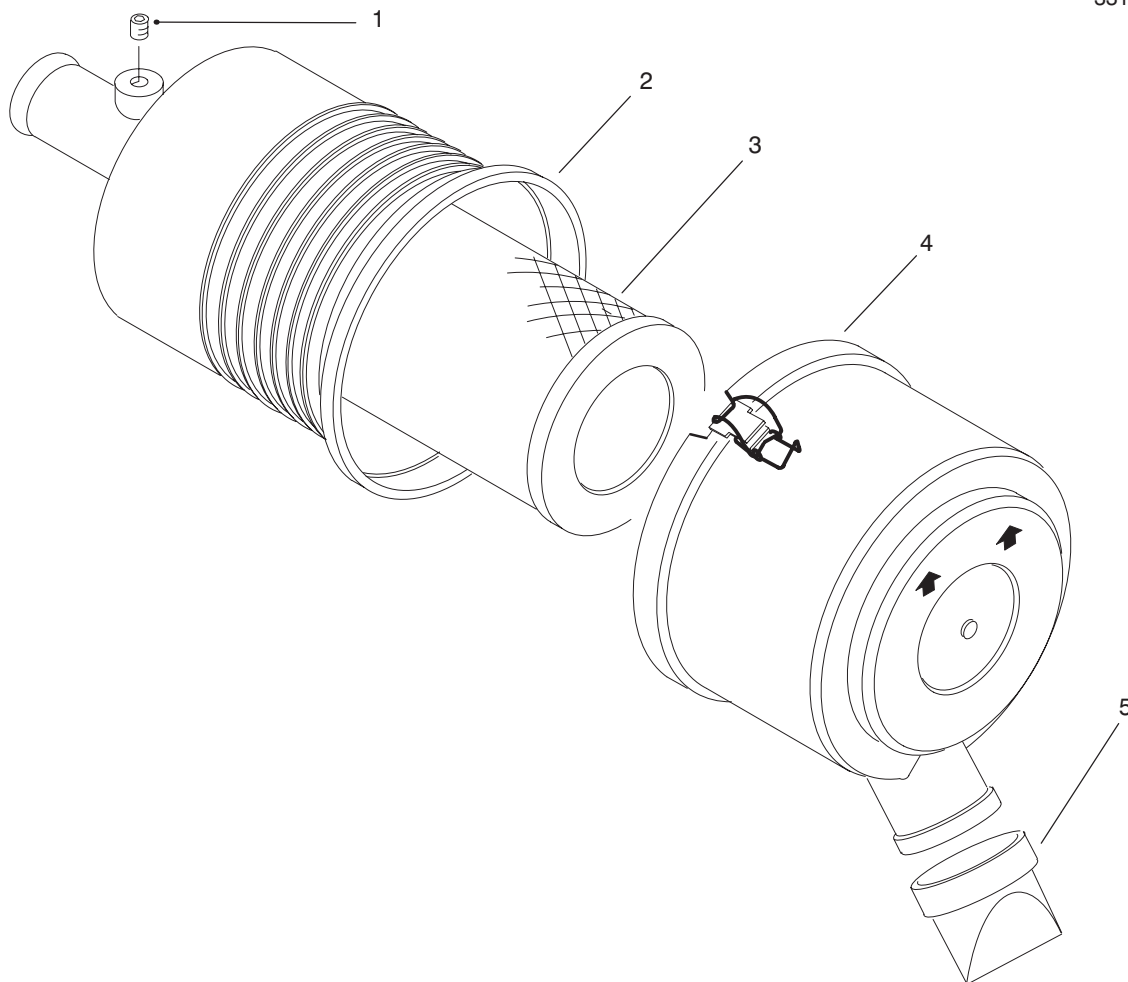
T-2710

SHROUDING & OIL COOLER ASSEMBLY (Continued)

Ref. No.	Part No.	Description	No. Used
34	95-0611	Bracket - RH	1
35	95-0612	Bracket - LH	1
36	249-40	Keeper	2
37	3290-378	Tie - Wire	3
38	95-5828	Strip - Wear	2
39	94-4519	Tube - Convoluted	1
40	95-0574	Wire Harness	1

Ref. No.	Part No.	Description	No. Used
41	95-5825	Asm - Wire	1
42	95-0599	Asm - Wire	1
43	95-0591	Hose - Hydraulic	1
44	38-3400	Snubber - Rubber	1
45	95-0563	Tube - Front, Motor LH	1
*	95-7861	Decal - Infield Pro 3020	2

*Not Illustrated



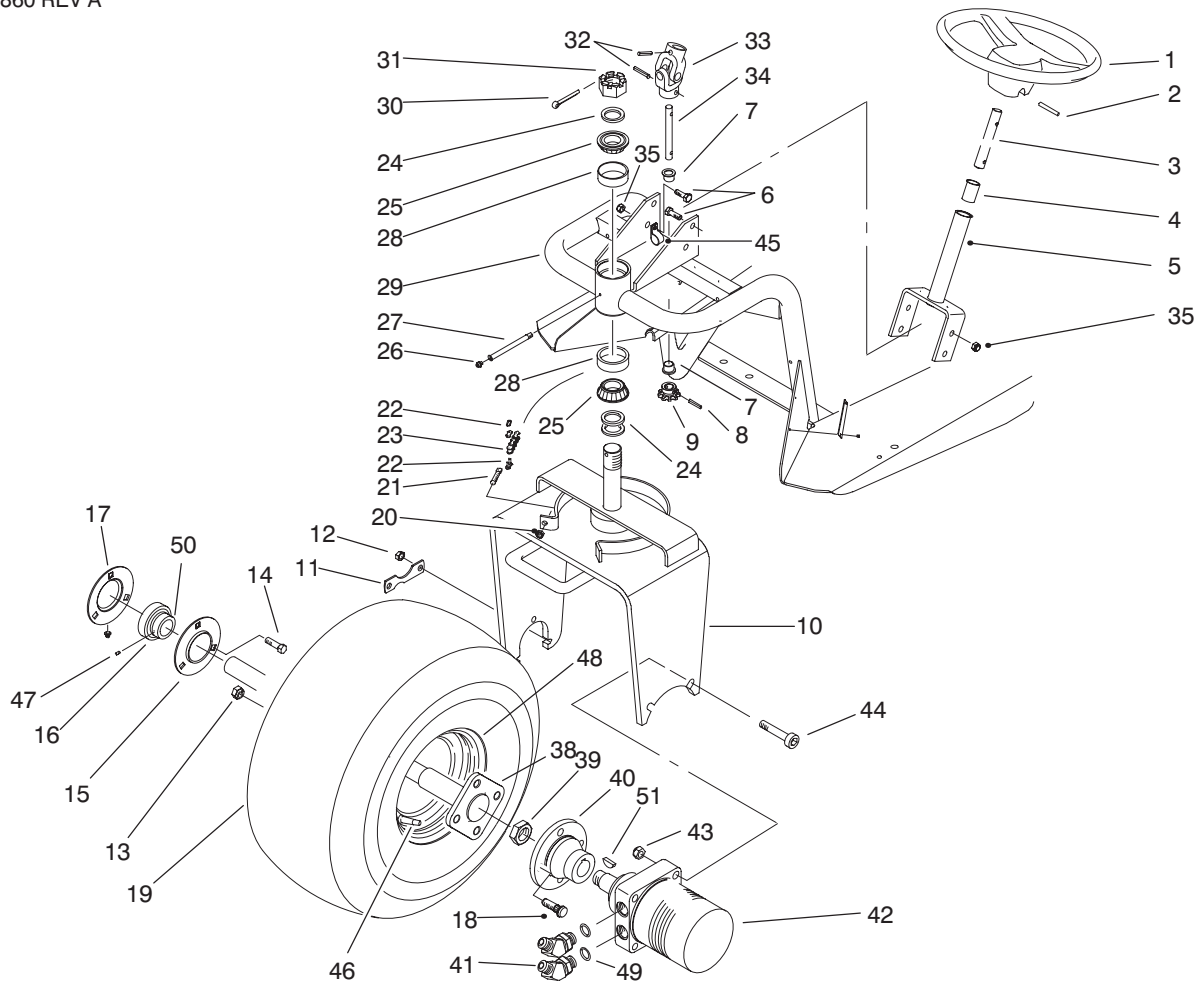
T-2607

AIR CLEANER ASSEMBLY NO. 95-5805

Ref. No.	Part No.	Description	No. Used
1	285-17	Plug	1
2		Asm-Body	1
3	93-2195	Element - Air Cleaner	1

Ref. No.	Part No.	Description	No. Used
4	94-3652	Asm-Cover	1
5	94-1414	Valve - Vacuumator	1

*Not Illustrated

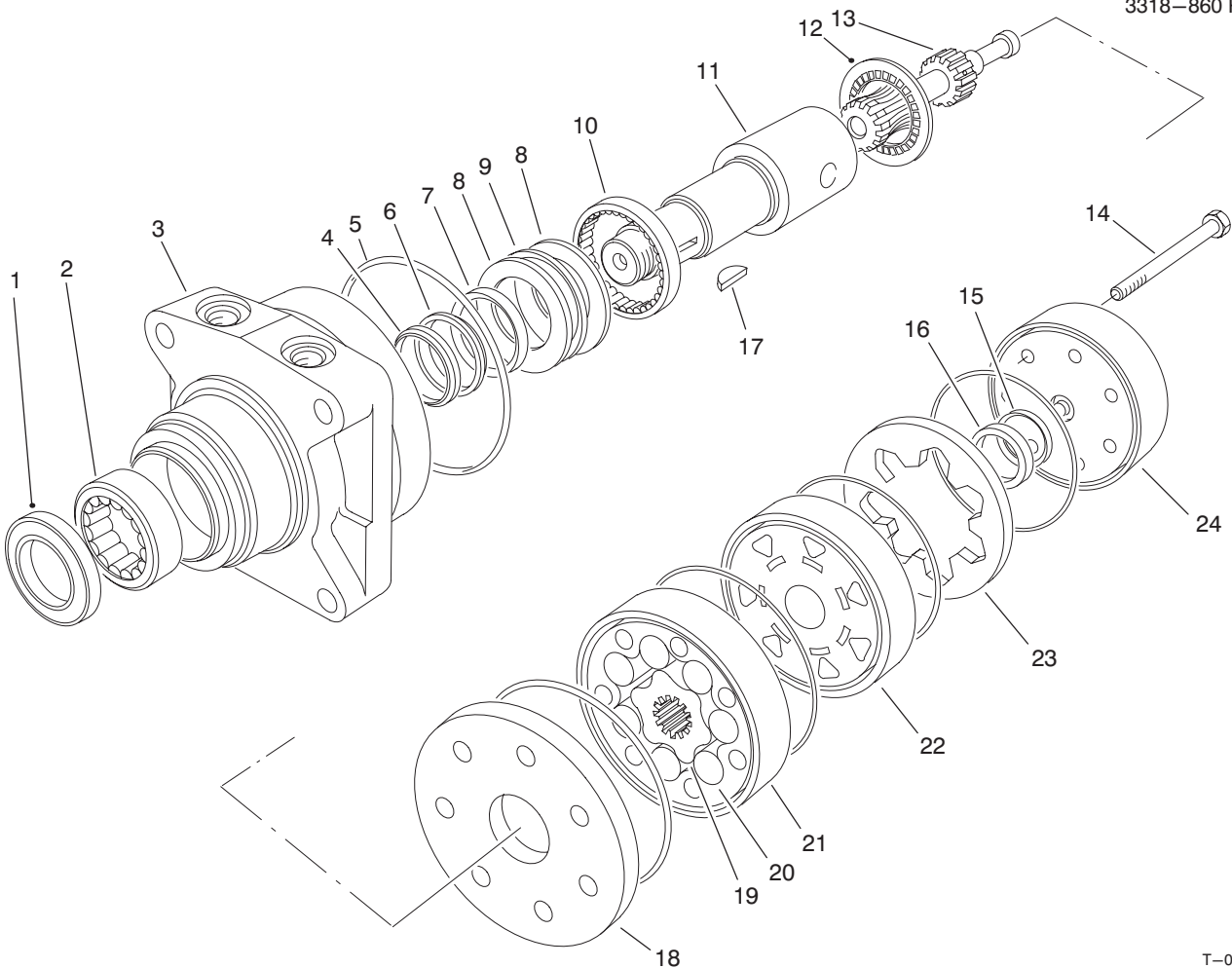


T-2608-3

FRONT WHEEL & STEERING ASSEMBLY

Ref. No.	Part No.	Description	No. Used
1	76-1420	Wheel - Steering	1
2	32121-111	Pin - Spiral	1
3	85-6610	Shaft - Steering Upper	1
4	256-185	Bushing - Sleeve	1
5	92-5035	Asm-Steering Shaft (Incl. Ref. #4)	1
6	322-5	Screw - HH	4
7	65-8770	Bushing - Flange	2
8	32121-112	Pin - Spiral	1
9	85-9180	Sprocket	1
10	95-0578	Fork - Offset	1
11	88-8350	Tab - Bearing	1
12	3296-39	Nut - Lock	3
13	242-50	Nut - Lug	4
14	323-29	Screw - HH	3
15	85-8950	Flangette - Standard	1
16	251-352	Asm-Bearing (Incl. Ref. #47 & 50)	1
17	85-8940	Flangette - Relube	1
18	10-6830	Stud - Drive	4
19	85-8290	Tire	1
20	3296-4	Nut - Lock	2
21	18-6380	Pin - Steering Adjustment	2
22	2710-11	Link - Connecting	2
23	92-5039	Chain	1
24	18-6320	Washer - Steering	3

Ref. No.	Part No.	Description	No. Used
25	254-70	Cone - Bearing	2
26	302-5	Fitting - Grease	1
27	95-0604	Tube - Extension	1
28	254-61	Cup - Bearing	2
29	95-0600	Asm-Frame (Incl. Ref. #7)	1
30	3272-37	Pin - Cotter	1
31	32136-9	Nut - Slotted	1
32	32121-15	Pin - Spiral	2
33	85-9200	Knuckle - Steering	1
34	85-9210	Shaft - Steering, Lower	1
35	3296-29	Nut - Lock	4
38	92-8969	Spindle	1
39	26-3790	Nut - Lock	1
40	93-6838	Hub - Wheel	1
41	353-427	Fitting - Hydraulic 45° (Incl. Ref. #49)	2
42	75-9830	Motor - Hydraulic, Wheel	1
43	3296-23	Nut - Lock	2
44	3274-93	Screw - HSH	2
45	2412-93	R-Clamp	2
46	232-35	Stem - Valve	1
47		Screw - Set	2
48	94-6116	Rim - Wheel	1
49	237-80	O-Ring	2
50		Collar - Locking	1



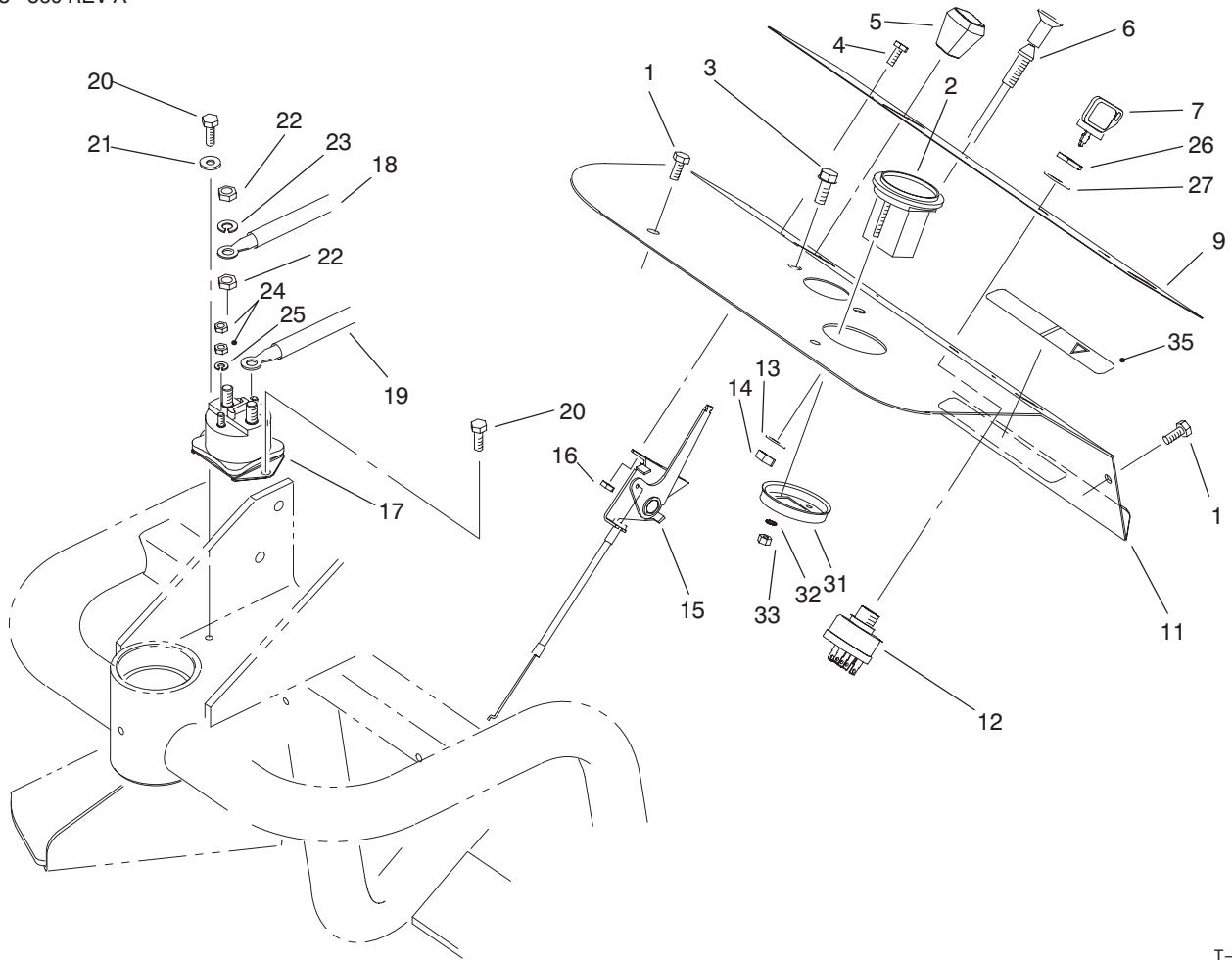
T-0983-2

HYDRAULIC DRIVE MOTOR FRONT NO. 75-9830

Ref. No.	Part No.	Description	No. Used
1		Seal - Dirt & Water	1
2		Bearing	1
3		Housing	1
4		Washer - Backup	1
5		Seal - Rings	5
6		Washer - Backup	1
7		Seal - Inner	1
8		Washer - Thrust	2
9		Bearing - Thrust	1
10		Bearing	1
11	76-0860	Shaft - Coupling	1
12	76-0850	Bearing - Thrust	1
13	76-0820	Link - Drive	7
14	76-1030	Screw - HH	1
15		Seal - Commutator	1
16		Commutator	1

Ref. No.	Part No.	Description	No. Used
17	3257-42	Key - Woodruff	1
18	76-0870	Plate - Wear	1
19		Rotor	1
20		Vane	7
21		Stator	1
22	76-0840	Manifold	1
23		Ring - Commutator	1
24	76-0940	Asm - Cover, End	1
*	76-0950	Rotor Set (Incl. Ref. #19-21)	1
*	76-0880	Asm - Commutator (Incl. Ref. #15, 16 & 23)	1
*	94-8178	Kit - Seal (Incl. Ref. #1, 4-7 & 15)	1
*	76-0810	Asm - Housing (Incl. Ref. #2, 3 & 8-10)	1

*Not Illustrated

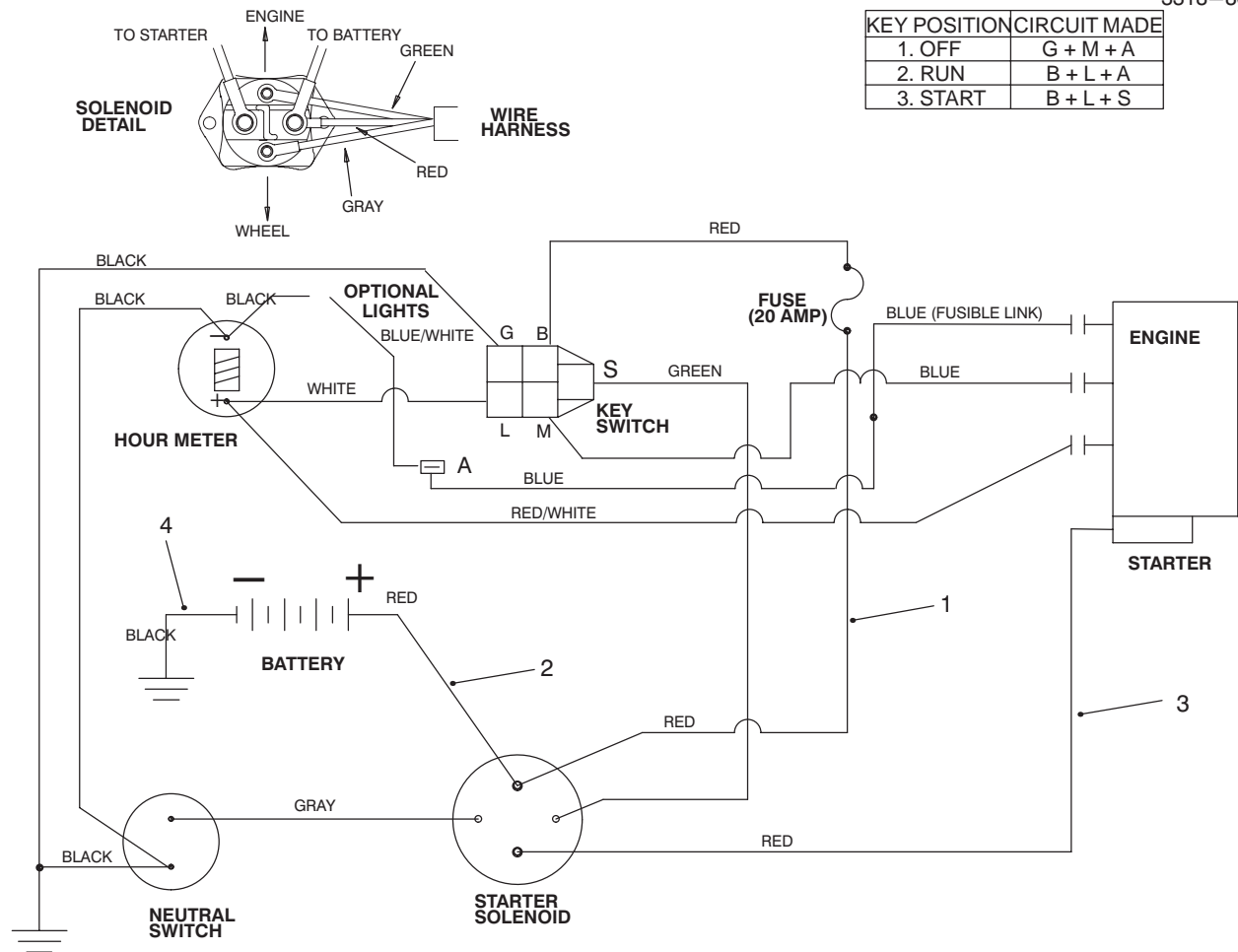


T-2589-3

DASH PANEL ASSEMBLY

Ref. No.	Part No.	Description	No. Used
1	3234-33	Screw - HH	4
2	66-2950	Asm-Hourmeter (Incl. Ref. #31-33)	1
3	32144-11	Screw - HFH.	2
4	32105-2	Screw - HH	2
5	66-0120	Knob - Throttle	1
6	95-0597	Asm-Choke Control	1
7	63-8360	Key - Ignition	2
9	95-0648	Decal - Dash	1
11	95-0588	Panel - Dash	1
12	83-0020	Asm-Ignition Switch (Incl. Ref. #26 & 27)	1
13	3254-6	Washer - Lock ITLW	1
14	3219-3	Nut - Hex.	1
15	95-0598	Control - Throttle	1
16	3296-12	Nut - Lock	2

Ref. No.	Part No.	Description	No. Used
17	28-4210	Solenoid - Starter	1
18	95-5825	Asm-Wire	1
19	95-0599	Asm-Wire	1
20	32104-42	Screw - Self Tapping	2
22	3218-13	Nut - Jam	2
23	3253-4	Washer - Lock	2
24	3219-14	Nut - Hex.	4
25	3253-17	Washer - Lock	2
26	218-461	Nut - Hex.	1
27	3254-5	Washer - Lock ITLW	1
31		Clamp - Mounting	1
32	3255-20	Washer - Lock ITLW	2
33	3217-25	Nut - Hex.	2
34	95-0574	Harness - Wire	1
35	93-9052	Decal - Shields	1



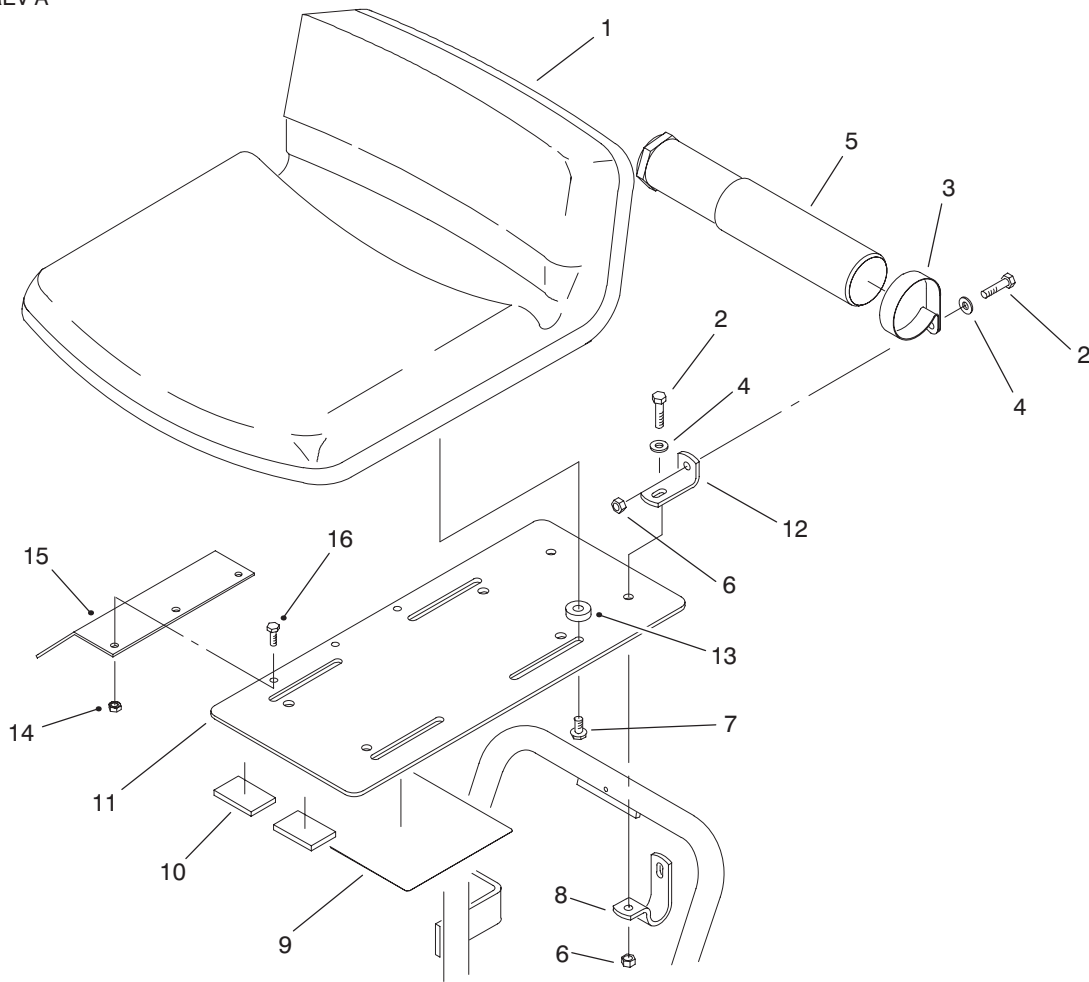
KEY POSITION	CIRCUIT MADE
1. OFF	G + M + A
2. RUN	B + L + A
3. START	B + L + S

ELECTRICAL SCHEMATIC

T-2593

Ref. No.	Part No.	Description	No. Used
1	95-0574	Harness - Wire	1
2	95-0599	Asm. - Wire	1

Ref. No.	Part No.	Description	No. Used
3	95-5825	Wire	1
4	86-7450	Wire - Ground, Battery	1

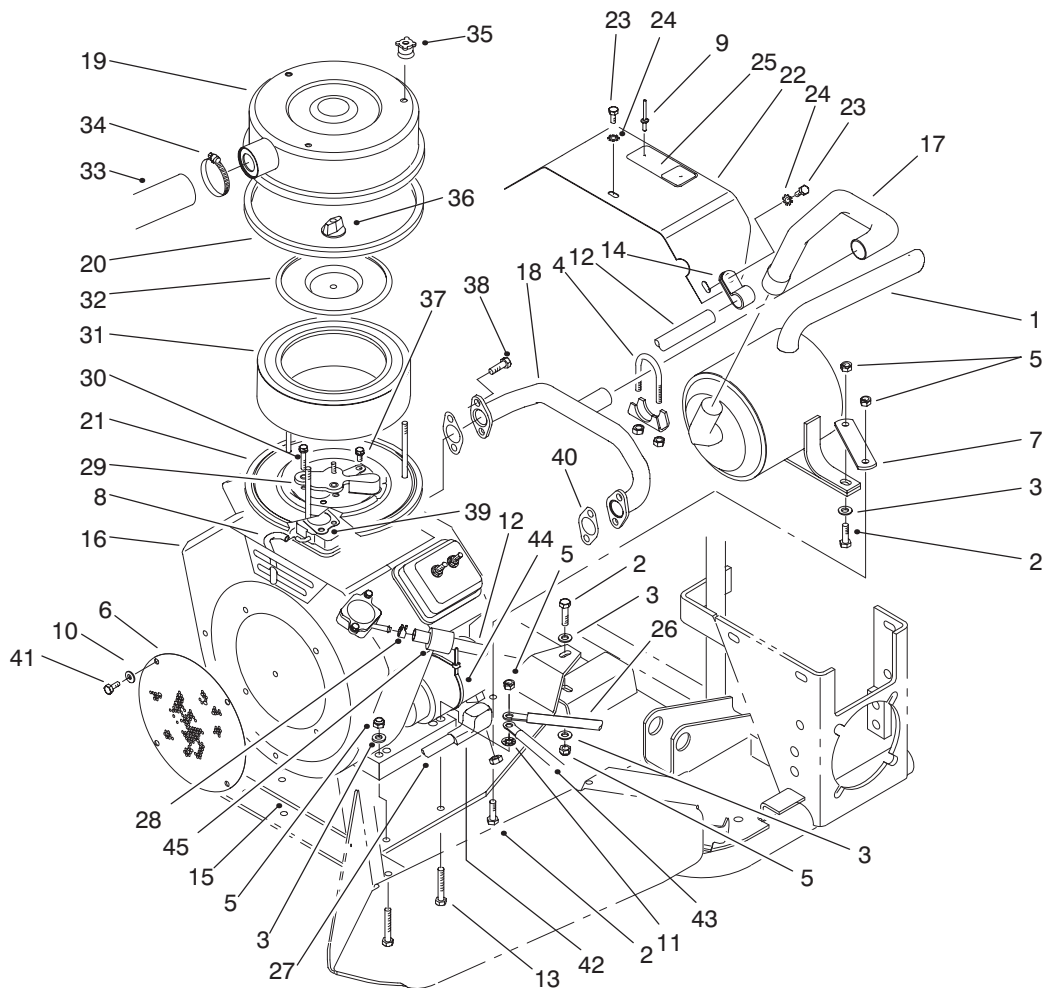


T-2586-2

SEAT ASSEMBLY

Ref. No.	Part No.	Description	No. Used
1	92-8976	Seat	1
2	322-6	Screw - Hex. Hd.	4
3	2412-133	Clamp - R	2
4	3256-3	Washer - Flat	4
5	74-0720	Tube - Manual	1
6	3296-29	Nut - Lock	4
7	3234-5	Screw - Hex. Hd.	4
8	92-8972	Clamp - Seat	2
9	95-0646	Decal - Service	1

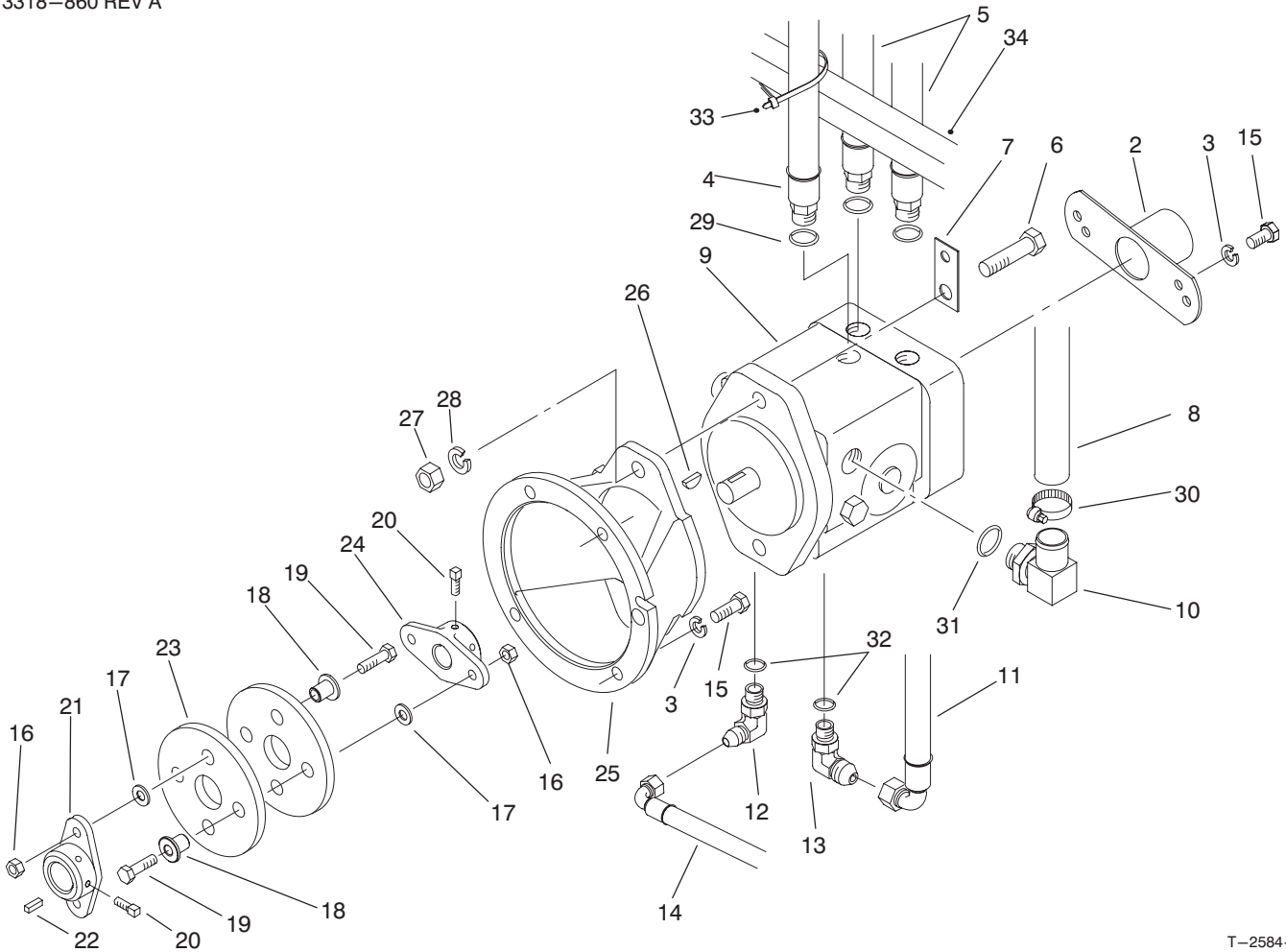
Ref. No.	Part No.	Description	No. Used
9	93-7251	Decal - Service (Europe)	1
10	74-0340	Cushion - Rubber	2
11	95-0637	Plate - Seat	1
12	92-8973	Angle	2
13	62-6660	Spacer	4
14	3296-42	Nut - Lock	3
15	95-5840	Shield - Seat Base	1
16	321-4	Screw - Hex. Hd.	3



T-2588-3

ENGINE INSTALLATION ASSEMBLY

Ref. No.	Part No.	Description	No. Used	Ref. No.	Part No.	Description	No. Used
1	95-0552	Muffler	1	23	33113-012	Screw - HH	3
2	322-6	Screw - HH	3	24	3255-7	Washer - Lock, Int. Tooth	3
3	3256-23	Washer - Flat	6	25	95-0645	Plate - Hot Surface	1
4	95-0586	Asm-Clamp, Muffler	2	26	86-7450	Wire - Battery, Ground	1
5	3296-29	Nut - Hex.	7	27	86-7570	Asm-Wire	1
6	92-8996	Screen	1	28	2412-98	Clamp - Hose	1
7	95-0557	Bracket - Muffler	1	29	85-0440	Shield - Carburetor, Inlet	1
8	75-4705	Hose - Fuel	1	30	85-0450	Screw	2
9	3269-32	Rivet - Pop	2	31	83-1770	Element - Air Cleaner	1
10	3256-1	Washer - Flat	4	32	85-0420	Plate - Cover	1
11	3255-8	Washer - Lock, Ext. Tooth	1	33	95-0582	Hose - Air	1
12	95-0619	Hose - Gas Line	1	34	2412-92	Clamp - Hose	1
13	322-10	Screw - HH	4	35	88-8640	Knob - Air Cleaner	3
14	2412-73	R-Clamp	1	36	85-0430	Knob - Air Cleaner	1
15	95-0556	Base - Engine	1	37	85-0460	Screw - Washer Face	3
16	85-8000	Asm-Engine	1	38	85-0540	Screw	4
17	95-0551	Tube - Exhaust	1	39	85-0470	Gasket - Carburetor	1
18	95-0550	Asm-Manifold	1	40		Gasket - Manifold	2
19	85-8370	Asm-Cover, Air Cleaner	1	41	33113-008	Screw	4
20	85-8360	Gasket - Ring	1	42	83-2490	Boot	1
21	85-8430	Asm-Base, Air Cleaner	1	43	95-0574	Harness - Wire	1
22	95-5827	Shield - Muffler (Incl. Ref. #9 & 25)	1	44	3290-378	Tie - Cable	1
				45	38-3400	Bumper	1

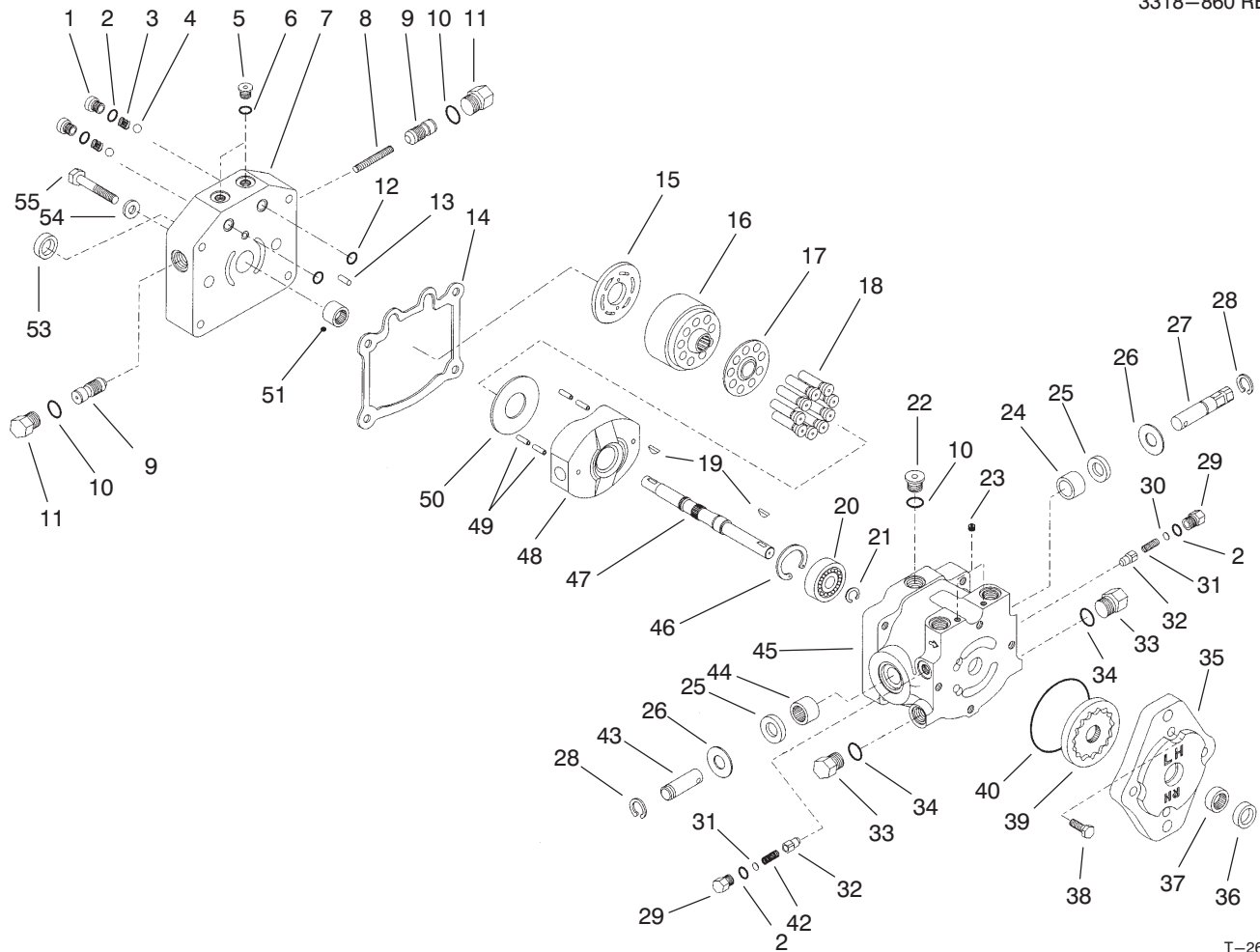


T-2584-3

HYDRAULIC PUMP INSTALLATION ASSEMBLY

Ref. No.	Part No.	Description	No. Used
2	95-0632	Asm-Cover	1
3	3253-5	Washer - Lock	6
4	21-5360	Asm-Hydraulic Hose (Incl. Ref. #29)	1
5	95-0595	Asm-Hydraulic Hose (Incl. Ref. #29)	2
6	325-7	Screw - HH	2
7	26-2950	Standoff - Wire	1
8	95-0555	Hose - Suction	1
9	95-0587	Asm-Hydraulic Pump (Incl. Ref. #26)	1
10	95-0629	Fitting - Hose, Push On (Incl. Ref. #31)	1
11	95-0592	Hose - Hydraulic	1
12	353-511	Fitting - Hydraulic 90° (Incl. Ref. #32)	1
13	353-374	Fitting - Hydraulic 90° (Incl. Ref. #32)	1
14	95-0591	Hose - Hydraulic	1
15	323-6	Screw - HH	6

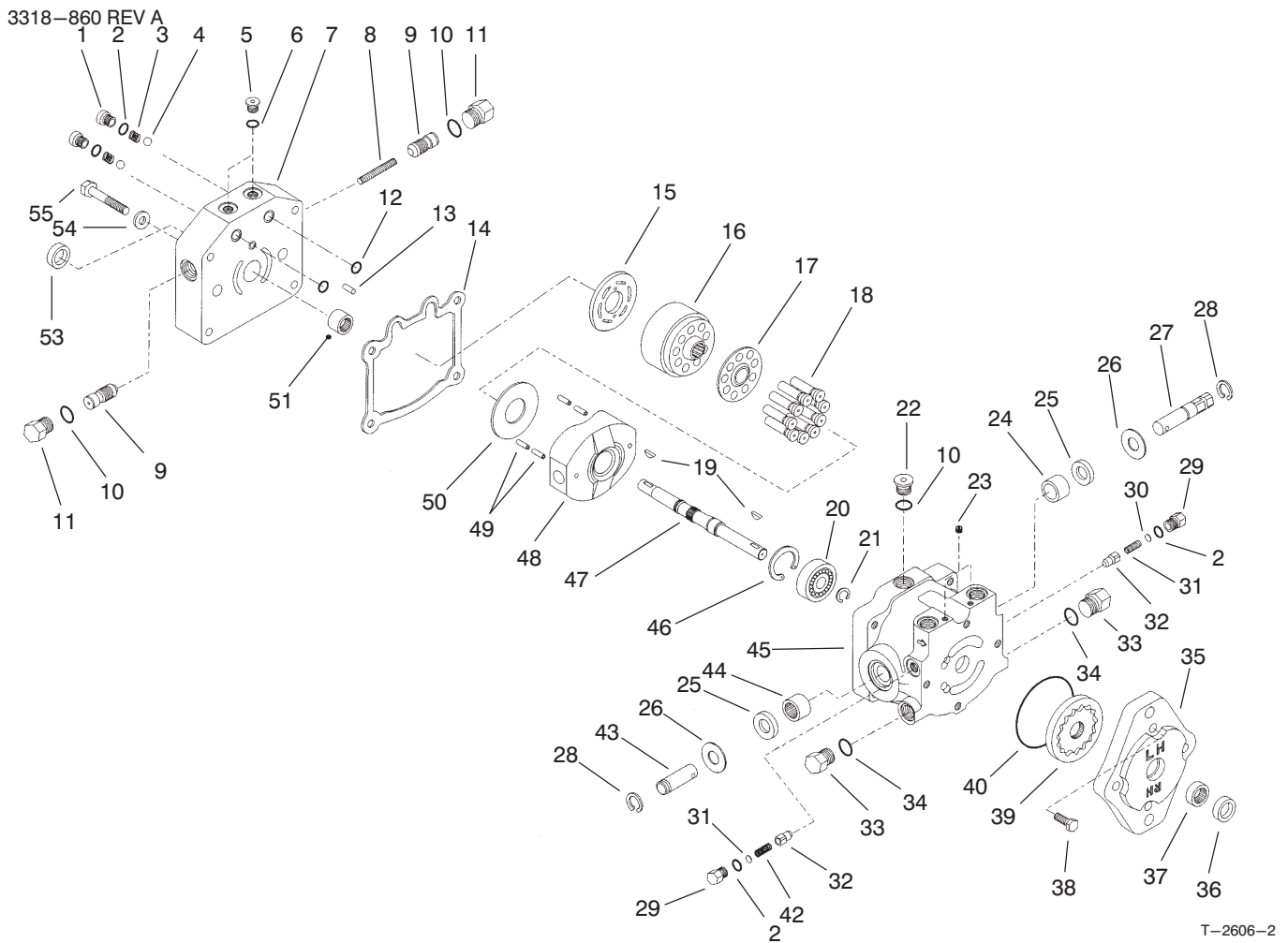
Ref. No.	Part No.	Description	No. Used
16	3296-29	Nut - Lock	4
17	3256-23	Washer - Flat	4
18	71-4411	Spacer - Coupling	4
19	322-17	Screw - HH	4
20	3241-5	Screw - Set, Square Hd.	4
21	27-1960	Hub - Engine	1
22	10-7070	Key - Square	1
23	80-8650	Coupling - Rubber	2
24	49-9600	Hub - Pump	1
25	95-0631	Mount - Pump	1
26	3257-32	Key - Woodruff	1
27	3217-9	Nut - Hex.	2
28	3253-7	Washer - Lock	2
29	237-79	O-Ring	3
30	2412-129	Clamp - Hose	1
31	237-80	O-Ring	1
32	237-42	O-Ring	2
33	3290-378	Tie - Cable	1
34	22-4670	Hose - Hydraulic	2



T-2606-2

HYDRAULIC PUMP ASSEMBLY NO. 95-0587

Ref. No.	Part No.	Description	No. Used	Ref. No.	Part No.	Description	No. Used
1	25-2650	Plug	2	23	285-17	Plug - Pipe	2
2	237-86	O-Ring	4	24	88-8190	Bearing - Journal	1
3	25-2640	Spring	2	25	25-3210	Seal - Lip	2
4	25-2490	Ball	2	26	25-2510	Washer	2
5	92-8776	Plug (Incl. Ref. #6)	2	27	88-8180	Shaft - Trunnion	1
6	92-8777	O-Ring	2	28	32151-46	Ring - Retaining	2
7	95-5808	Cap - End	1	29	25-2460	Plug (Incl. Ref. #2)	2
8	95-5815	Spring - Valve, Acceleration	1	30	25-2470	Kit-Shim	2
9	95-5814	Valve - Acceleration	2	31	25-2570	Spring	1
10	237-79	O-Ring	3	32	83-7260	Cone - Charge Relief	2
11	95-5816	Plug (Incl. Ref. #10)	2	33	88-8210	Plug (Incl. Ref. #34)	2
12	237-30	O-Ring	2	34	237-80	O-Ring	2
13	25-2430	Pin	1	35	25-2690	Housing - Pump, Charge	1
14	25-2400	Gasket - Cap, End	1	36	67-8060	Seal - Lip	1
15	95-5811	Plate - Valve	1	37	67-8050	Bearing - Needle	1
16	25-2600	Kit-Cylinder Block (Incl. Ref. #17-18)	1	38	322-4	Screw - HH	4
17		Retainer - Slipper	1	39	95-5812	Asm. - Gerotor	1
18		Asm-Piston	9	40	237-95	O-Ring	1
19	3257-32	Key - Woodruff	2	42	25-2480	Spring	1
20	95-5809	Ball Bearing	1	43	25-2500	Shaft - Trunnion	1
21	95-5813	Ring - Retaining	1	44	252-82	Bearing - Needle	1
22	353-988	Plug (Incl. Ref. #10)	1	45	88-8170	Asm-Housing, Variable (Incl. Ref. #24, 25, & 44)	1
				46	32120-11	Ring - Retaining	1

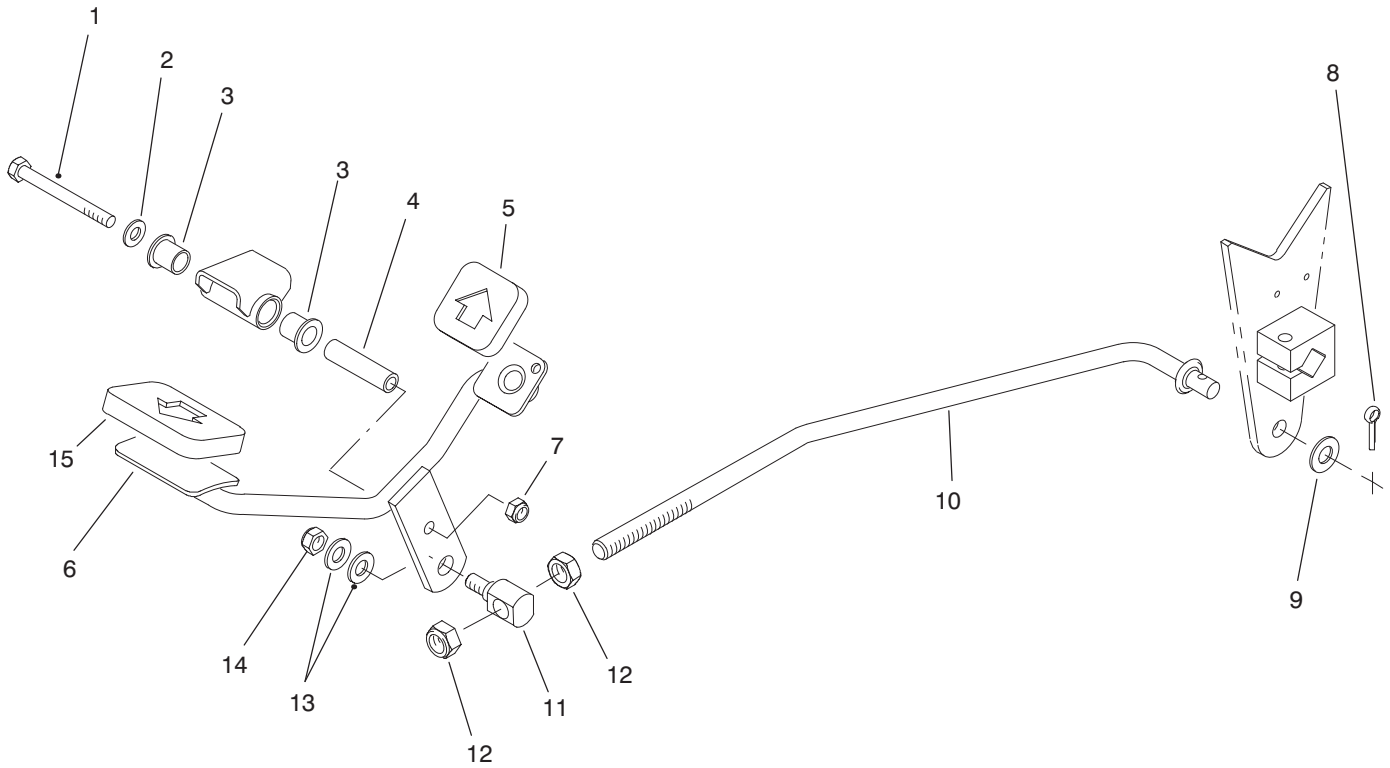


HYDRAULIC PUMP ASSEMBLY NO. 95-0587 (Continued)

Ref. No.	Part No.	Description	No. Used
47	95-5810	Shaft	1
48	25-2450	Swashplate	1
49	32121-91	Pin - Spring	4
50	25-2380	Plate - Thrust	1
51	46-8400	Bearing - Roller	1
53	88-8230	Seal - Lip	1
54		Washer	1
55	323-45	Screw - HH	4

Ref. No.	Part No.	Description	No. Used
*	25-3180	Kit-Valve, Check (Incl. Ref. #1-4)	1
*	49-8520	Kit-Implement Relief (Incl. Ref. #2 & 29-32)	1
*	49-8510	Kit-Relief, Charge (Incl. Ref. #2, 29, 30 & 41-42)	1

*Not Illustrated

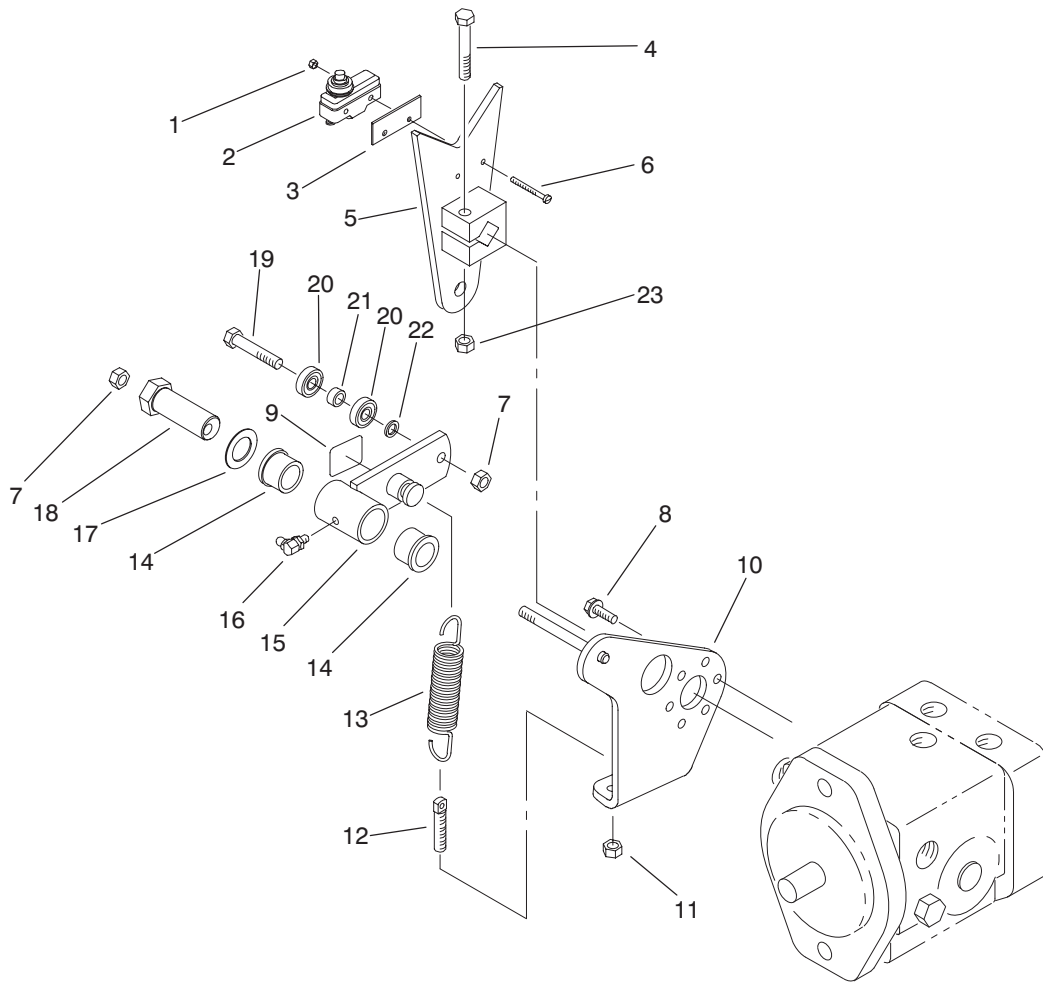


T-2582

TRACTION PEDAL ASSEMBLY

Ref. No.	Part No.	Description	No. Used
1	322-14	Screw - HH	1
2	3256-23	Washer - Flat	1
3	256-219	Bushing - Flange	2
4	85-8960	Spacer	1
5	74-9110	Pad - Pedal, Reverse	1
6	92-2343	Pedal	1
7	3296-29	Nut - Lock	1
8	3272-16	Pin - Cotter	1

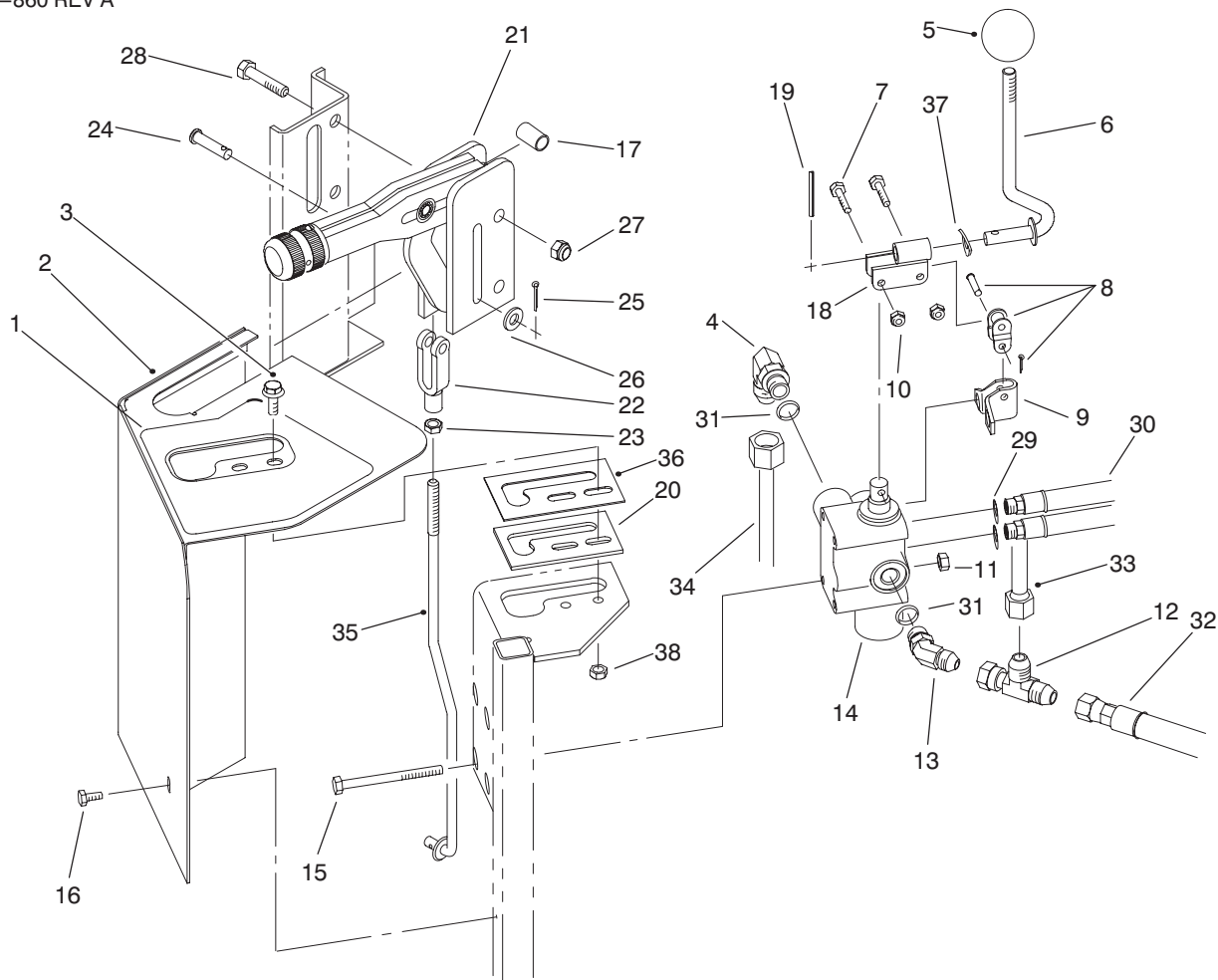
Ref. No.	Part No.	Description	No. Used
9	3256-25	Washer - Flat	1
10	95-0584	Rod - Pump, Control	1
11	92-2344	Stud - Adjuster, Trunnion	1
12	3218-5	Nut - Jam	2
13	3256-24	Washer - Flat	2
14	3296-39	Nut - Lock	1
15	74-9100	Pad - Pedal, Forward	1



T-2583

PUMP CONTROL LEVER ASSEMBLY

Ref. No.	Part No.	Description	No. Used	Ref. No.	Part No.	Description	No. Used
1	3296-9	Nut - Lock	2	13	85-9030	Spring - Extension	1
2	29-6163	Switch - Neutral	1	14	256-113	Bushing - Flange	2
3	85-9150	Plate - Switch	1	15	85-8460	Asm-Switch Arm (Incl. Ref. #14 & 16)	1
4	323-10	Screw - HH	1	16	302-60	Fitting - Grease	1
5	85-8300	Lever - Pump	1	17	3-6498	Washer - Thrust	1
6	32105-21	Screw - Machine	2	18	76-8640	Stud - Traction	1
7	3296-29	Nut - Lock	2	19	322-8	Screw - HH	1
8	49-2040	Screw - HFH	3	20	251-307	Bearing	2
9	93-9051	Decal - Eccentric Bolt	1	21	85-9120	Spacer	1
10	95-0553	Plate - Pump	1	22	75-5470	Spacer	1
11	3296-4	Nut - Lock	1	23	3296-39	Nut - Lock	1
12	18-6380	Pin - Steering, Adjust	1				

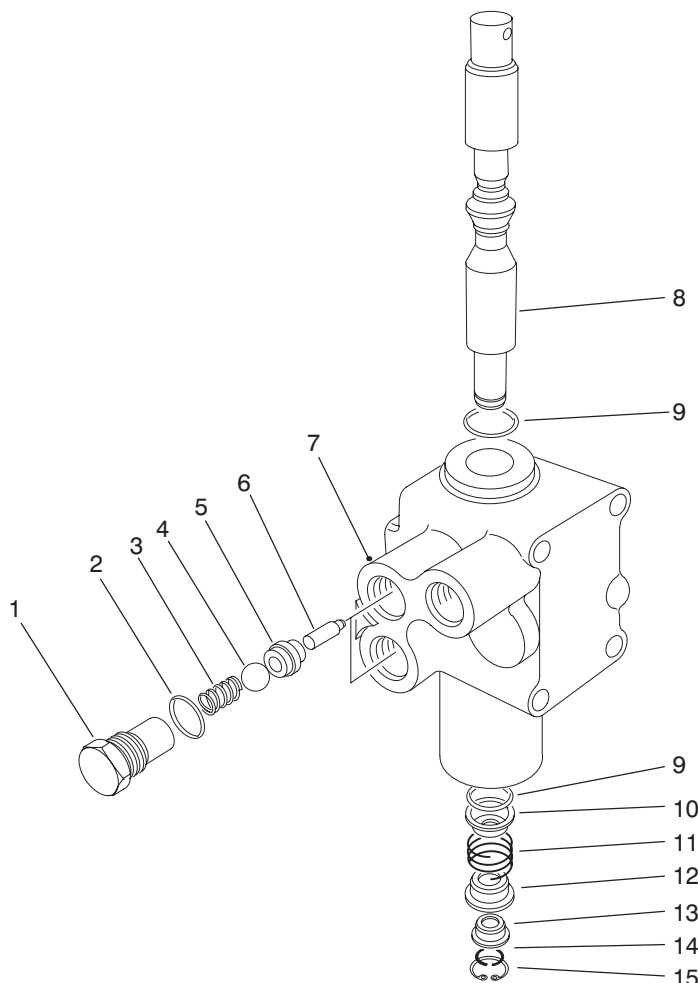


T-2595-3

LIFT VALVE INSTALLATION ASSEMBLY

Ref. No.	Part No.	Description	No. Used
1	95-0647	Decal - Control Panel	1
2	95-0601	Shroud - Lift Valve	1
3	3234-4	Screw - HH	2
4	353-511	Fitting - Hydraulic 90° (Incl. Ref. #31)	1
5	233-21	Knob	1
6	92-8981	Lever - Lift	1
7	3290-360	Screw - HH	2
8	2710-20	Link - Offset	1
9	88-8480	Bracket - Pivot	1
10	3296-2	Nut - Lock	2
11	3296-42	Nut - Lock	4
12	353-877	Fitting - Swivel Run Tee	1
13	353-212	Fitting - Hydraulic 45° (Incl. Ref. #31)	1
14	43-1710	Asm-Valve	1
15	321-23	Screw - HH	4
16	32104-76	Screw - Self Tapping	1
17	85-0290	Spacer - Support, Seat	2
18	92-8983	Pivot	1
19	32121-73	Pin - Spring	1

Ref. No.	Part No.	Description	No. Used
20	21-8640	Latch - Lever, Valve	1
21	95-0636	Lever - Brake	1
22	282-2	Clevis	1
23	3220-2	Nut - Hex.	1
24	283-14	Pin - Clevis	1
25	3272-6	Pin - Cotter	1
26	3256-23	Washer - Flat	1
27	3296-29	Nut - Lock	2
28	322-8	Screw - HH	2
29	237-78	O-Ring	2
30	22-4670	Hose - Hydraulic (Incl. Ref. #29)	2
31	237-42	O-Ring	2
32	95-0592	Hose - Hydraulic	1
33	95-0575	Tube - Valve, Shuttle	1
34	95-0643	Tube - Hydraulic	1
35	95-0628	Rod - Brake	1
36	95-5833	Guide - Lever, Lift	1
37	3290-477	Washer - Wave	1
38	3296-16	Nut - Lock	2

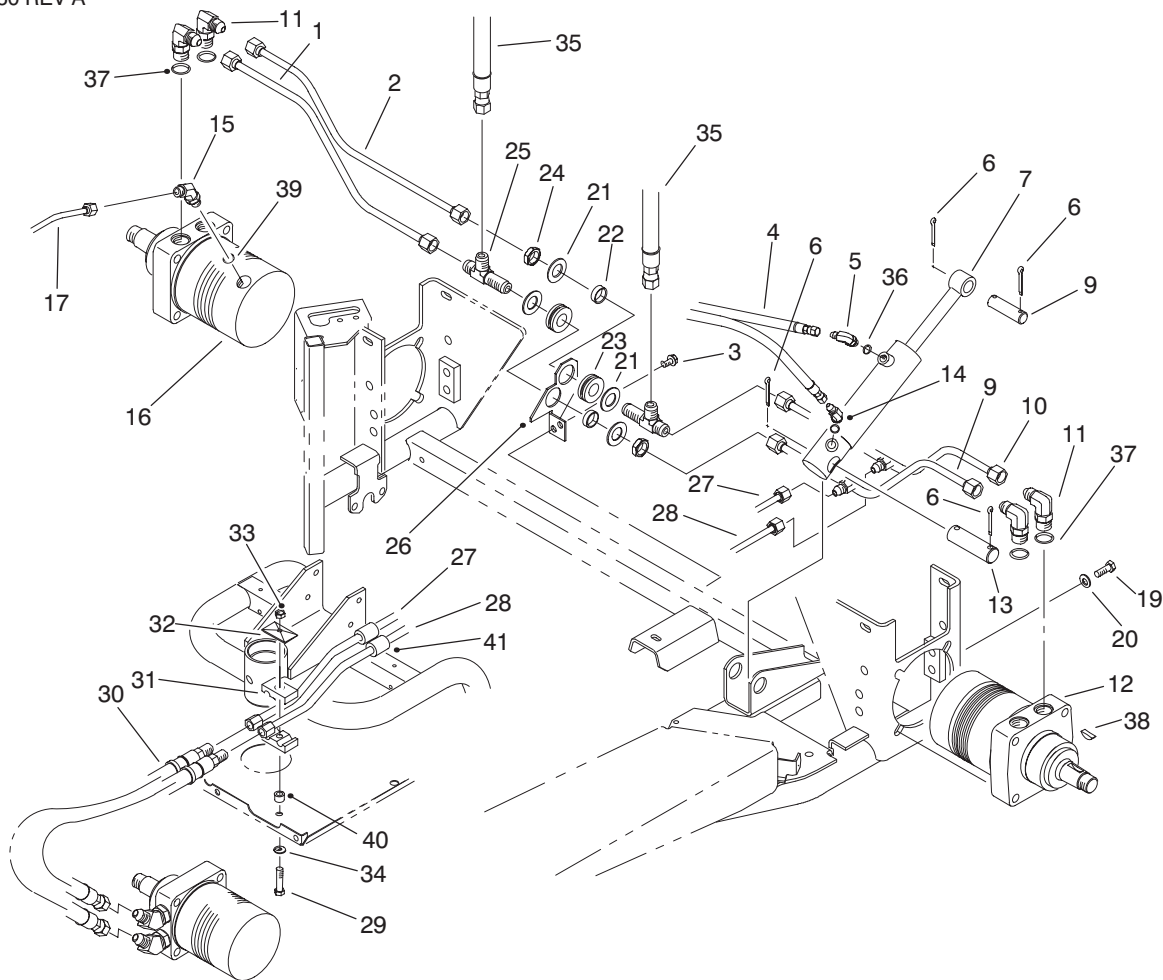


T-0428-2

HYDRAULIC LIFT VALVE ASSEMBLY NO. 43-1710

Ref. No.	Part No.	Description	No. Used
1	22-8330	Plug	2
2	237-42	O-Ring	2
3	22-8340	Spring	2
4	22-8350	Ball	2
5	22-8370	Seat - Check Valve	2
6	22-8360	Pin - Cam	2
7	43-1730	Body	1
8	22-8420	Spool	1

Ref. No.	Part No.	Description	No. Used
9	22-8500	O-Ring	2
10	22-8380	Retainer - Spring	2
11	22-8410	Spring	1
12	22-8390	Spring Retainer	1
13	23-3030	Spacer Float	1
14	22-8480	Ring - Spool Retaining	1
15	22-8490	Ring - Retaining	1

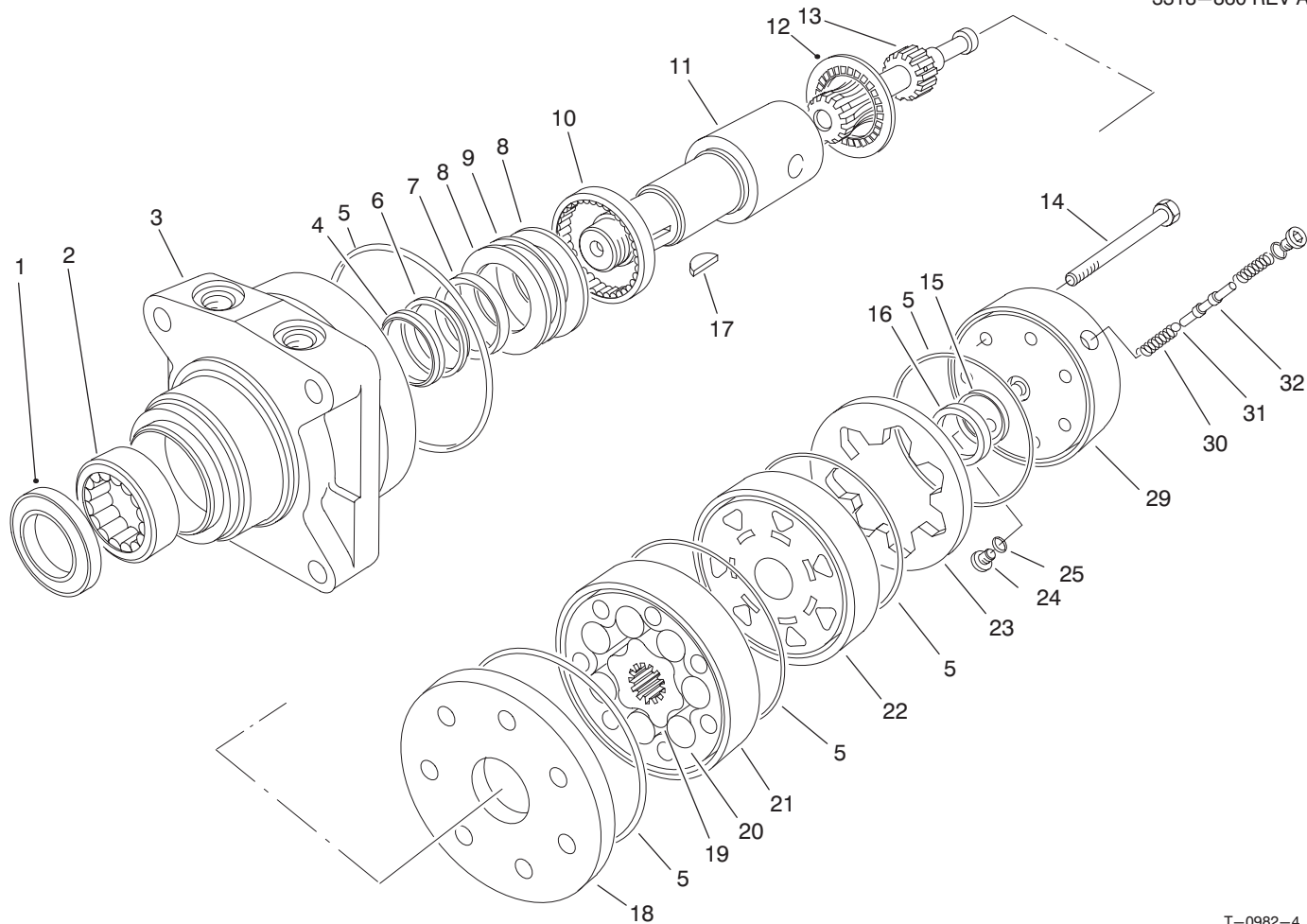


T-2600-3

REAR WHEEL DRIVE ASSEMBLY

Ref. No.	Part No.	Description	No. Used
1	95-0564	Tube - Front, RH Rear Motor	1
2	95-0559	Tube - Rear, RH Rear Motor	1
3	32144-14	Screw - HWHTF	2
4	22-4670	Hose - Hydraulic	2
5	354-132	Fitting - Hydraulic 90° (Incl. Ref. #36)	1
6	3272-23	Pin - Cotter	4
7	83-7000	Cylinder - Hydraulic	1
8	18-7310	Pin - Cylinder, Rake	1
9	95-0560	Tube - Front, LH Rear Motor	1
10	95-0567	Tube - Rear, LH Rear Motor	1
11	353-426	Fitting - Hydraulic 90° (Incl. Ref. #37)	4
12	75-9831	Hydraulic Motor - Wheel	1
13	18-7160	Pin - Cylinder	1
14	353-431	Fitting - Hydraulic 45° (Incl. Ref. #36)	1
15	353-212	Fitting - Hydraulic 45° (Incl. Ref. #39)	1
16	75-9840	Hydraulic Motor - Wheel	1
17	95-0575	Tube - Shuttle Valve	1
19	325-5	Screw - HH	4

Ref. No.	Part No.	Description	No. Used
20	3256-26	Washer - Flat	4
21	69-8930	Washer	4
22	69-8960	Spacer	2
23	240-5	Grommet - Rubber	2
24	95-0642	Locknut - Bulkhead	2
25	95-0577	Fitting - Bulkhead, Tee	2
26	95-0568	Bracket - Bulkhead	1
27	95-0562	Tube - Front, Motor RH	1
28	95-0563	Tube - Front, Motor LH	1
29	321-18	Screw - HH	1
30	51-0600	Hose - Hydraulic	2
31	56-7976	Clamp - Tube	2
32	69-9760	Plate - Cover	1
33	3296-8	Nut - Lock	1
34	3256-78	Washer - Flat	1
35	95-0595	Hose - Hydraulic	2
36	237-78	O-Ring	2
38	3257-42	Key - Woodruff	2
37	237-79	O-Ring	4
39	237-42	O-Ring	1
40	52-2480	Spacer	1
41	38-3400	Snubber - Rubber	2



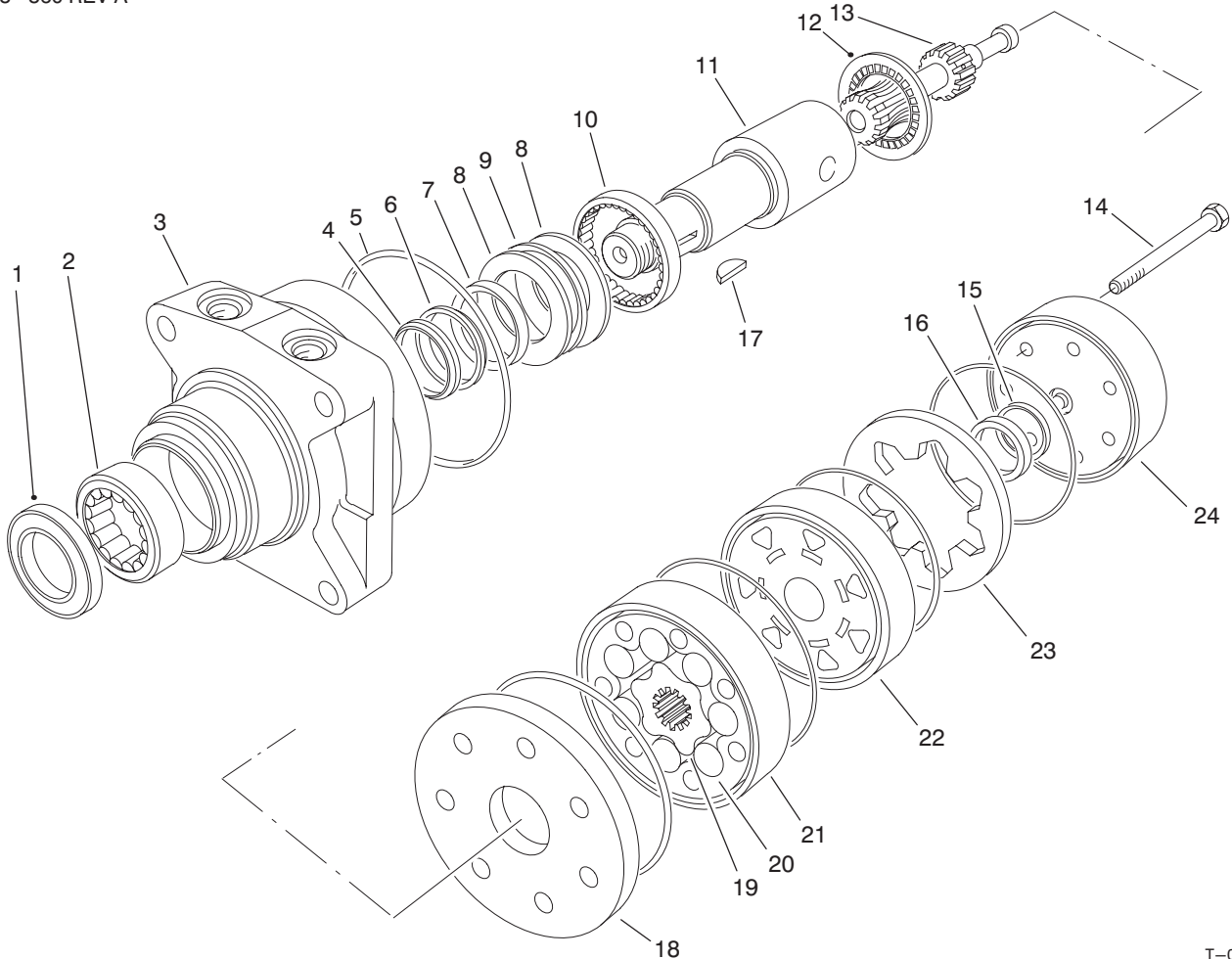
T-0982-4

HYDRAULIC DRIVE MOTOR RIGHT REAR NO. 75-9840

Ref. No.	Part No.	Description	No. Used
1		Seal – Dirt & Water	1
2		Bearing	1
3		Housing	1
4		Washer – Backup	1
5		Seal – Rings	5
6		Washer – Backup	1
7		Seal – Inner	1
8		Washer – Thrust	2
9		Bearing – Thrust	1
10		Bearing	1
11	76-0860	Shaft – Coupling	1
12	76-0850	Bearing – Thrust	1
13	76-0820	Link – Drive	1
14	76-1040	Screw – HH	7
15		Seal – Commutator	1
16		Commutator	1
17	3257-42	Key – Woodruff	1
18	76-0870	Plate – Wear	1
19		Rotor	1
20		Vane	7

Ref. No.	Part No.	Description	No. Used
21		Stator	1
22	76-0840	Manifold	1
23		Ring – Commutator	1
24	353-990	Plug (Incl. Ref. #25)	2
25	237-78	O-Ring	2
29	76-0890	Asm-Cover, End (Incl. Ref. #24-25 & 30-32)	1
30		Spring	2
31		Ball	1
32		Valve – Shuttle	1
*	76-0830	Rotor Set (Incl. Ref. #19-21)	1
*	76-0880	Asm-Commutator (Incl. Ref. #15, 16 & 23)	1
*	94-8178	Kit-Seal (Incl. Ref. #1, 4-7 & 15)	1
*	76-0810	Asm-Housing (Incl. Ref. #2, 3 & 8-10)	1

*Not Illustrated



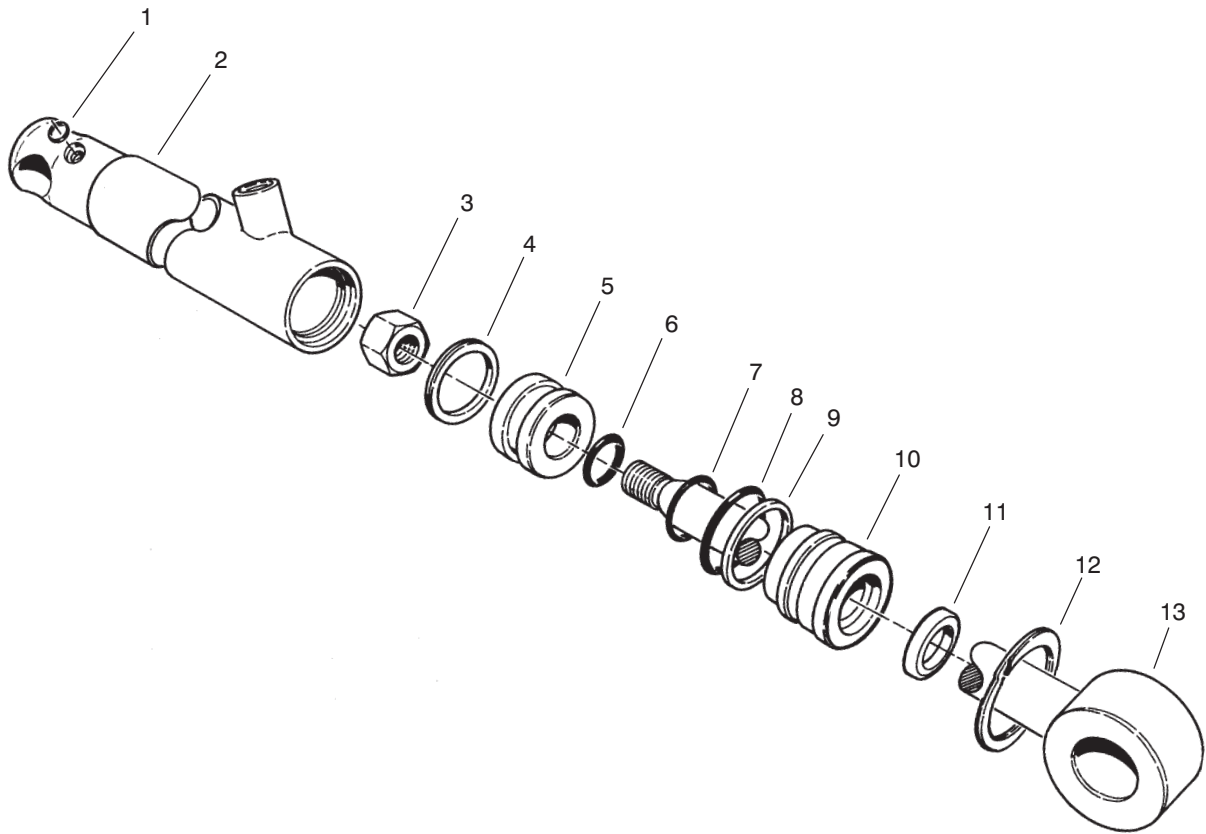
T-0983-3

HYDRAULIC DRIVE MOTOR LEFT REAR NO. 75-9831

Ref. No.	Part No.	Description	No. Used
1		Seal - Dirt & Water	1
2		Bearing	1
3		Housing	1
4		Washer - Backup	1
5		Seal - Rings	5
6		Washer - Backup	1
7		Seal - Inner	1
8		Washer - Thrust	2
9		Bearing - Thrust	1
10		Bearing	1
11	76-0860	Shaft - Coupling	1
12	76-0850	Bearing - Thrust	1
13	76-0820	Link - Drive	7
14	76-1020	Screw - HH	1
15		Seal - Commutator	1
16		Commutator	1

Ref. No.	Part No.	Description	No. Used
17	3257-42	Key - Woodruff	1
18	76-0870	Plate - Wear	1
19		Rotor	1
20		Vane	7
21		Stator	1
22	76-0840	Manifold	1
23		Ring - Commutator	1
24	76-0940	Asm - Cover, End	1
*	76-0830	Rotor Set (Incl. Ref. #19-21)	1
*	76-0880	Asm - Commutator (Incl. Ref. #15, 16 & 23)	1
*	94-8178	Kit - Seal (Incl. Ref. #1, 4-7 & 15)	1
*	76-0810	Asm - Housing (Incl. Ref. #2, 3 & 8-10)	1

*Not Illustrated



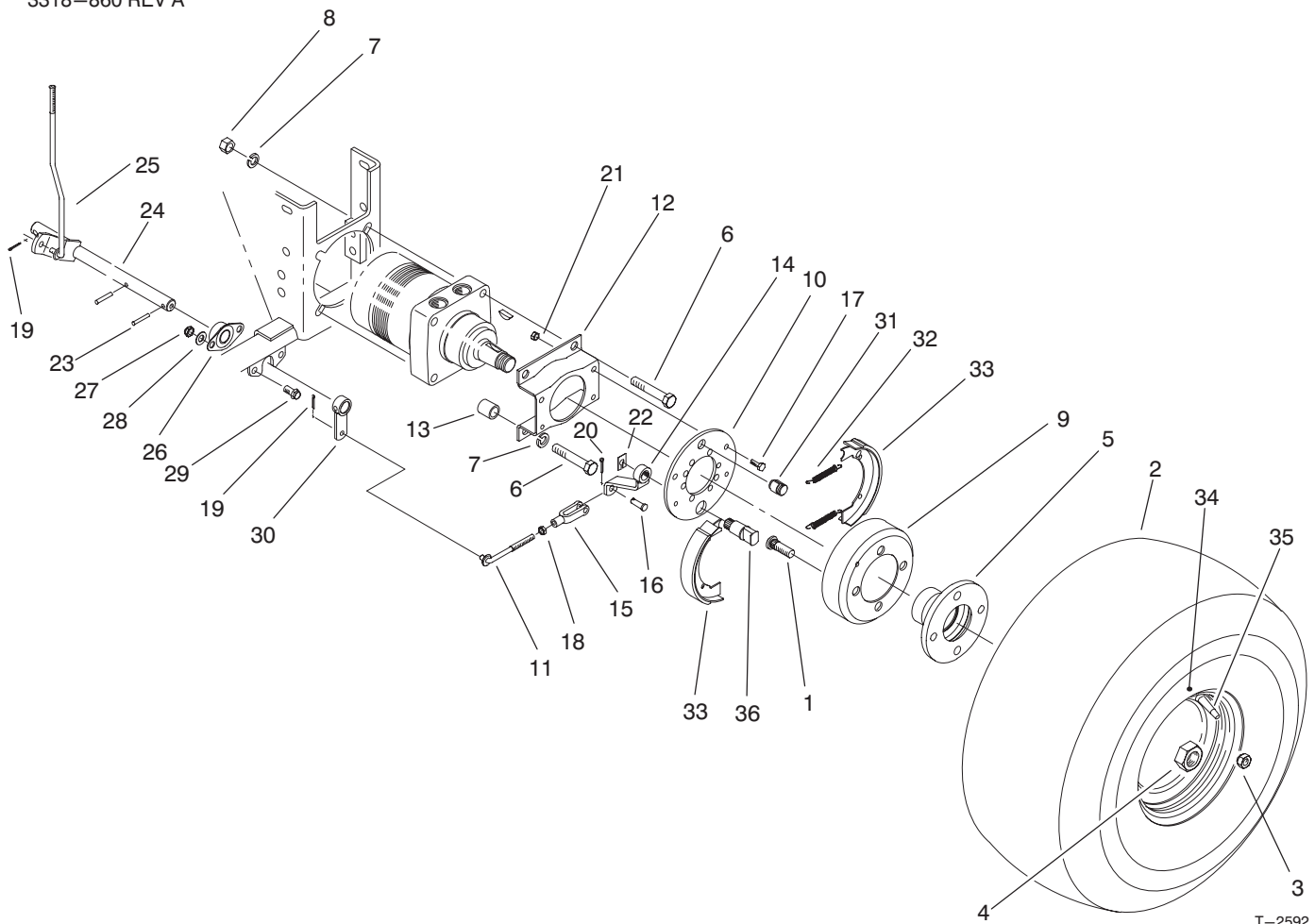
T-0217

HYDRAULIC CYLINDER ASSEMBLY NO. 83-7000

Ref. No.	Part No.	Description	No. Used
1	237-78	O-Ring	2
2	43-5260	Barrel - w/Clevis & Ports	1
3	32152-10	Nut	1
4		Uniring	1
5	70-2780	Piston	1
6		O-Ring	1
7		Poly-Pack	1
8		O-Ring	1

Ref. No.	Part No.	Description	No. Used
9		Back-Up	1
10	70-2770	Head	1
11		Seal - Dust	1
12	43-5220	Ring - Retaining	1
13	43-5230	Shaft with Clevis	1
*	83-7250	Kit-Seal Repair (Incl. Ref. #4, 6-9 & 11)	1

*Not Illustrated

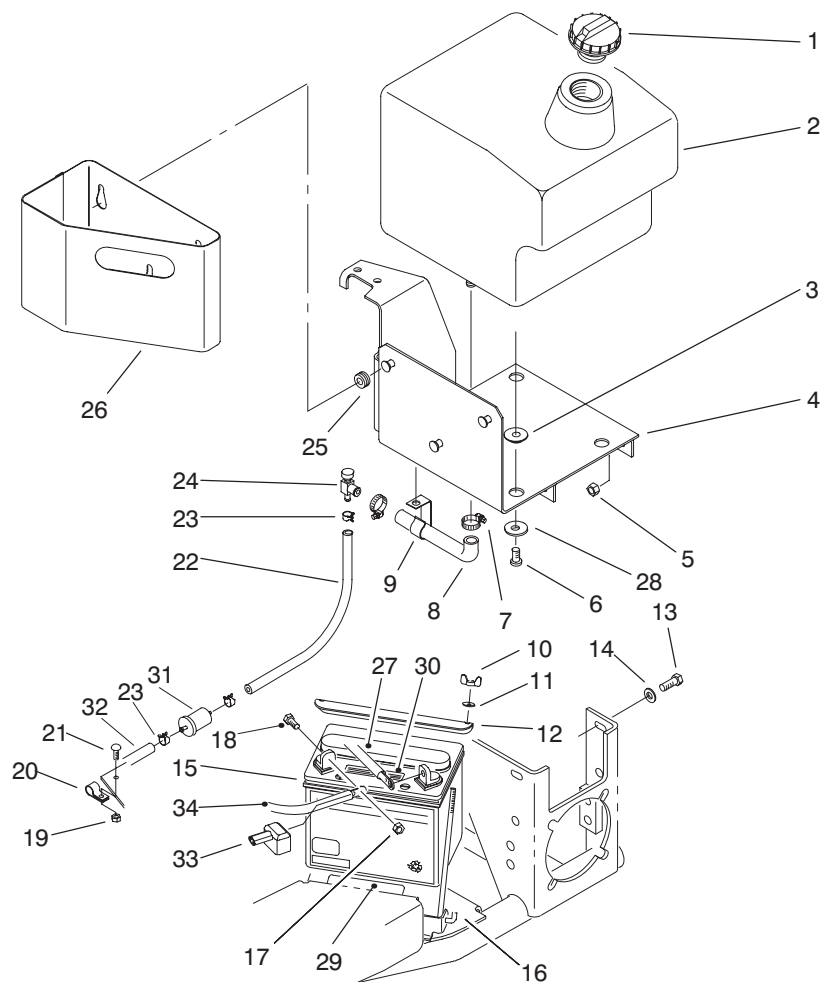


REAR WHEEL BRAKE ASSEMBLY

Ref. No.	Part No.	Description	No. Used
1	85-6540	Stud - Drive Type	8
2	85-8290	Tire	2
3	242-50	Nut - Lug	8
4	26-3790	Nut - Lock	2
5	93-6838	Hub - Wheel	2
6	325-14	Screw - HH	8
7	3253-7	Washer - Lock	8
8	3217-9	Nut - Hex.	4
9	10-6850	Drum - Brake	2
10	70-9870	Plate - Backing	2
11	84-1990	Rod - Adjusting	2
12	84-2000	Bracket - Brake	2
13	92-1715	Spacer	8
14	93-6850	Lever - Brake	2
15	282-2	Clevis	2
16	283-1	Pin - Clevis	2
17	321-4	Screw - HH	8
18	3220-2	Nut - Hex. Jam	2
19	3272-6	Pin - Cotter	3
20	3272-10	Pin - Cotter	2

Ref. No.	Part No.	Description	No. Used
21	3296-42	Nut - Lock	8
22	32120-47	Ring - Retaining	2
23	32121-6	Pin - Roll	3
24	95-0625	Rod - Traverse	1
25	95-0628	Rod - Brake	1
26	27-2320	Bearing - Side Flange	2
27	3296-59	Nut - Lock	4
28	3256-24	Washer - Flat	4
29	3234-1	Screw - HHF	4
30	83-9310	Arm - Brake, RH	2
31	70-9850	Clip - Retaining	2
32	70-9880	Spring - Return	4
33	70-9840	Lining - Shoe	4
34	94-6116	Rim	2
35	232-35	Stem - Valve	2
36	70-9860	Shaft - Cam	2
*	71-1500	Asm-Brake (Incl. Ref. #31-33, & 36-37)	2

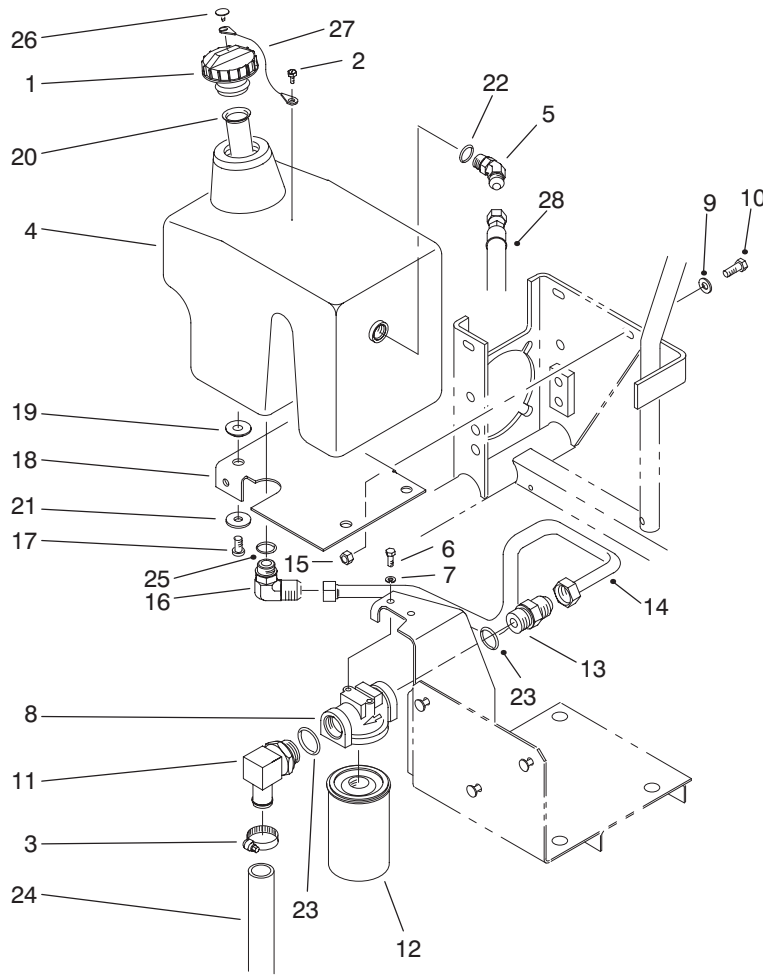
*Not Illustrated



T-2587

FUEL TANK ASSEMBLY

Ref. No.	Part No.	Description	No. Used	Ref. No.	Part No.	Description	No. Used
1	93-7170	Cap - Fuel	1	19	3296-42	Nut - Lock	1
2	92-7186	Tank - Fuel	1	20	2412-73	Clamp - R	1
3	240-11	Grommet	4	21	3274-69	Screw - HSBH	1
4	95-0576	Base - Fuel Tank	1	22	95-0618	Hose - Fuel	1
5	3296-39	Nut - Lock	3	23	2412-98	Clamp - Hose	4
6	3250-36	Screw - PPH	4	24	83-1390	Fitting - Fuel Shut-Off	1
7	2412-36	Clamp - Hose	2	25	240-9	Grommet	3
8	92-7152	Hose - Fuel	1	26	86-7640	Box - Litter	1
9	92-7160	Clip - Fuel Hose	1	27	86-7450	Wire - Battery-Ground	1
10	32103-12	Nut - Wing	2	28	63-8410	Washer - Flat	4
11	3256-22	Washer - Flat	2	29	93-6668	Decal - Battery	1
12	92-5018	Clamp - Battery	1	30	93-7276	Decal - Danger	1
13	323-6	Screw - HH	3	31	94-2690	Filter - Fuel	1
14	3256-24	Washer - Flat	3	32	95-0619	Hose - Gas Line	1
15	92-1678	Battery	1	33	28-8080	Boot - Terminal	1
16	56-7720	Bolt - Battery	2	34	86-7570	Wire - Battery, Solenoid	1
17	3296-29	Nut - Lock	2	*	95-0599	Asm-Wire	1
18	322-3	Screw - HH	2			(Incl. Ref. #33 & 34)	

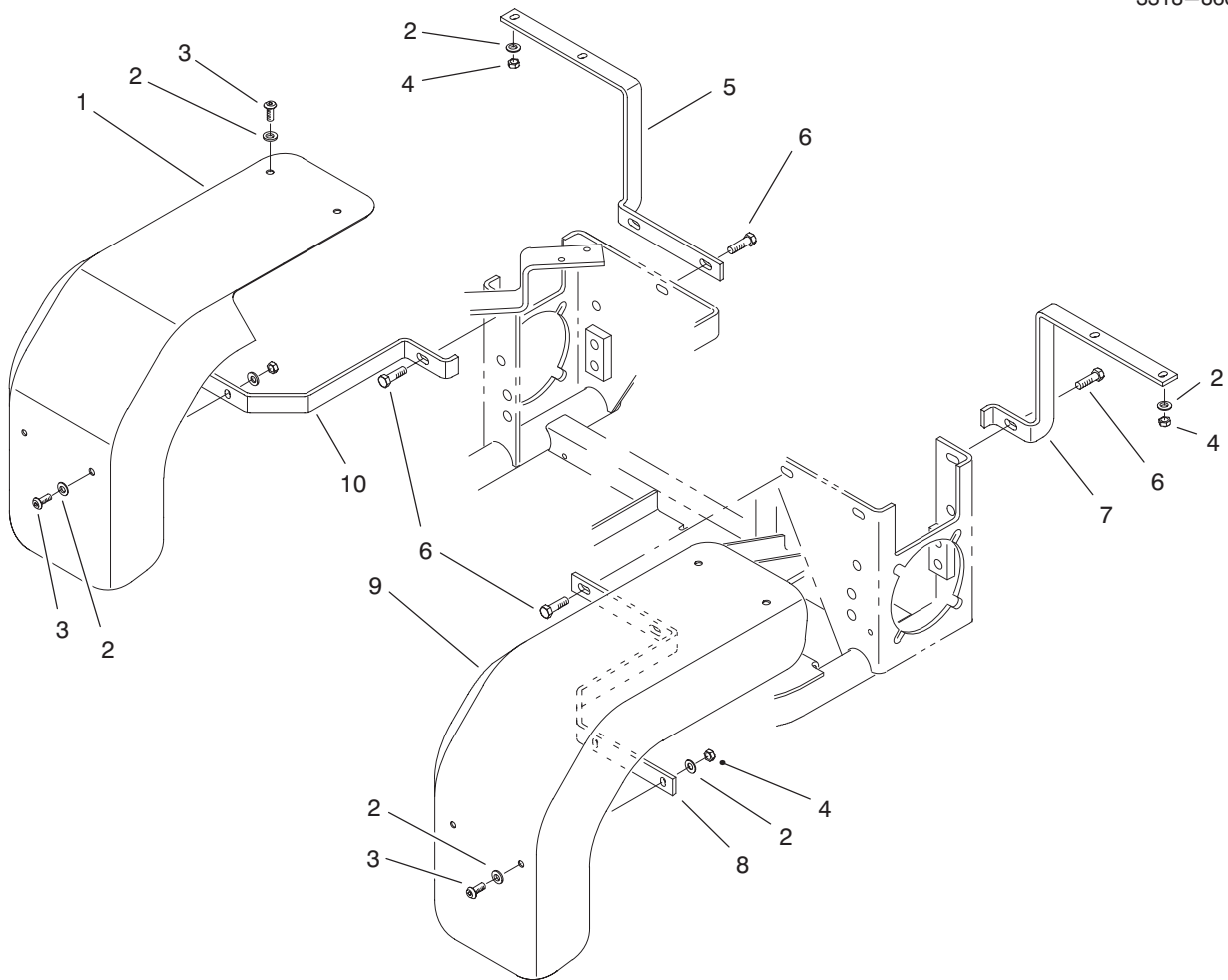


T-2591

HYDRAULIC OIL RESERVOIR & FILTER ASSEMBLY

Ref. No.	Part No.	Description	No. Used
1	93-4365	Asm-Oil Cap (Incl. Ref. #26 & 27)	1
2	57-5420	Screw - Shoulder	1
3	2412-129	Clamp - Worm	2
4	92-7187	Tank - Hydraulic	1
5	353-379	Fitting - Hydraulic 45° (Incl. Ref. #22)	1
6	321-3	Screw - HH	2
7	3253-3	Washer - Lock	2
8	68-8990	Asm-Head, Filter	1
9	3256-24	Washer - Flat	3
10	323-6	Screw - HH	3
11	353-987	Fitting - Hydraulic 90° (Incl. Ref. #23)	1
12	23-9740	Filter - Oil	1
13	353-383	Fitting - Hydraulic, Straight (Incl. Ref. #23)	1

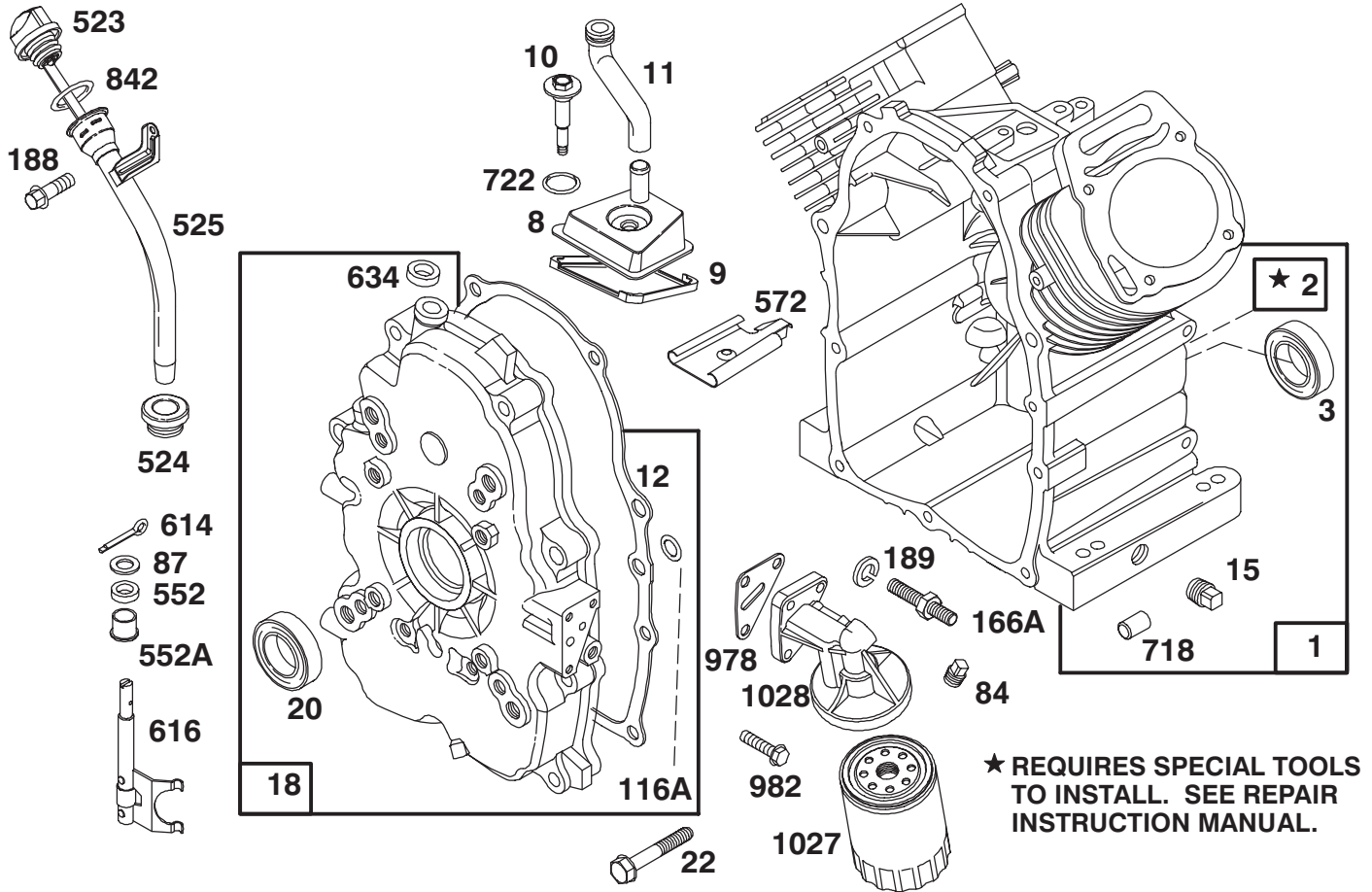
Ref. No.	Part No.	Description	No. Used
14	95-0565	Hose - Hydraulic	1
15	3296-39	Nut - Lock	3
16	95-0581	Fitting - Hydraulic 90° (Incl. Ref. #25)	1
17	3250-36	Screw - PPH	4
18	95-0590	Base - Hydraulic Tank	1
19	240-11	Grommet	4
20	92-1705	Screen - Filter	1
21	63-8410	Washer - Flat	4
22	237-79	O-Ring	1
23	237-81	O-Ring	2
24	95-0555	Hose - Hydraulic	1
25	237-80	O-Ring	1
26	2410-73	Retainer - Tether	1
27	75-0540	Tether - Oil Cap	1
28	21-5360	Hose - Hydraulic	1



T-2172

FENDER ASSEMBLY – EUROPE

Ref. No.	Part No.	Description	No. Used	Ref. No.	Part No.	Description	No. Used
1	94-1884	Fender – Rear, RH	1	6	323-7	Screw – HH	6
2	3256-70	Washer – Flat	16	7	94-1886	Bracket – Support, Fender	1
3	3274-55	Screw – HSBH	8	8	94-1885	Bracket – Support, Fender	1
4	3296-29	Nut – Lock	8	9	94-1883	Fender – Rear, LH	1
5	94-1888	Bracket – Support, Fender	1	10	94-1887	Bracket – Support, Fender	1



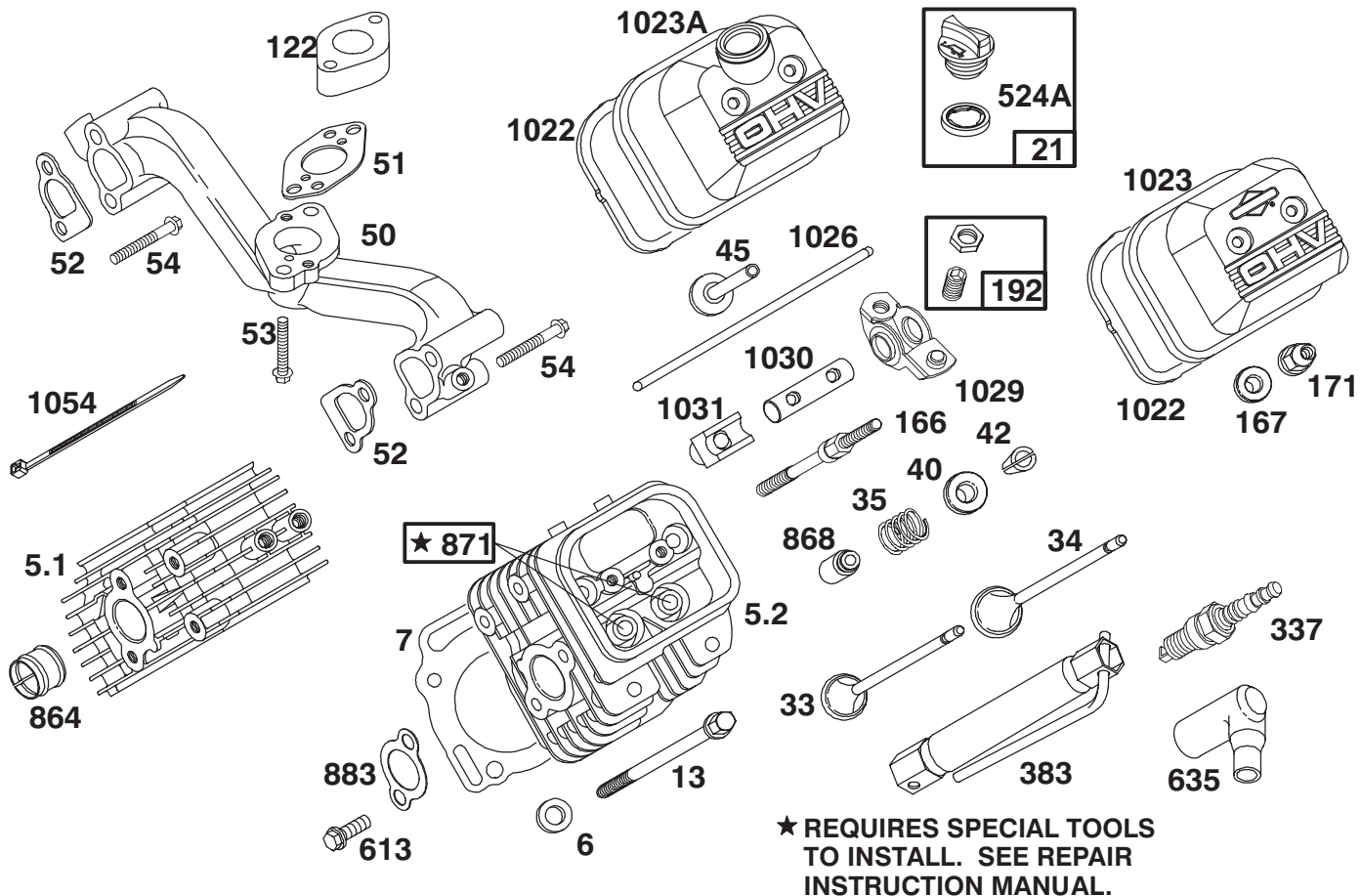
Assemblies include all parts shown in frames.

ENGINE BRIGGS & STRATTON MODEL 303447-0480-01

Ref. No.	Part No.	Description	No. Used
1	807521	Cylinder Assembly	1
2	805107	Bearing - Cylinder	1
*3	805101	Seal - Oil	1
8	807795	Breather Assembly	1
*9	805379	Gasket - Breather	1
10	805751	Screw - Hex. Washer Head	1
11	805362	Tube - Breather	1
*12	805112	Gasket - Crankcase Cover	1
15	805048	Plug - Oil Drain	1
18	807628	Cover Assembly - Crankcase	1
*20	805049	Seal - Oil	1
22	805696	Screw - Crankcase Cover	1
84	91488	Plug - Pipe	1
*87	805054	Seal - Governor Shaft	1
*116A	805198	O-Ring (Crankcase Cover)	1
166A	805073	Stud - Oil Filter Adapter	1
188	805247	Screw - Hex. Head	1
189	805449	Lockwasher	1

Ref. No.	Part No.	Description	No. Used
523	807977	Dipstick	1
*524	805259	Seal - Filler Tube	1
525	807584	Tube - Oil Filler	1
552	805412	Bushing - Governor Shaft	1
552A	805413	Bushing - Governor Shaft	1
572	805197	Baffle - Breather	1
614	805417	Pin - Cotter	1
616	807596	Fork - Governor	1
634	805416	Washer - Governor Shaft	1
718	805103	Dowel - Crankcase	1
*722	805483	Seal - Breather Screw	1
*842	805386	O-Ring	1
*978	805250	Gasket - Oil Filter Adapter	1
982	805030	Screw	1
1027	492932	Filter - Oil	1
1028	805292	Adapter - Oil Filter	1

*Included in Gasket Set - Part No. 807989.



Assemblies include all parts shown in frames.

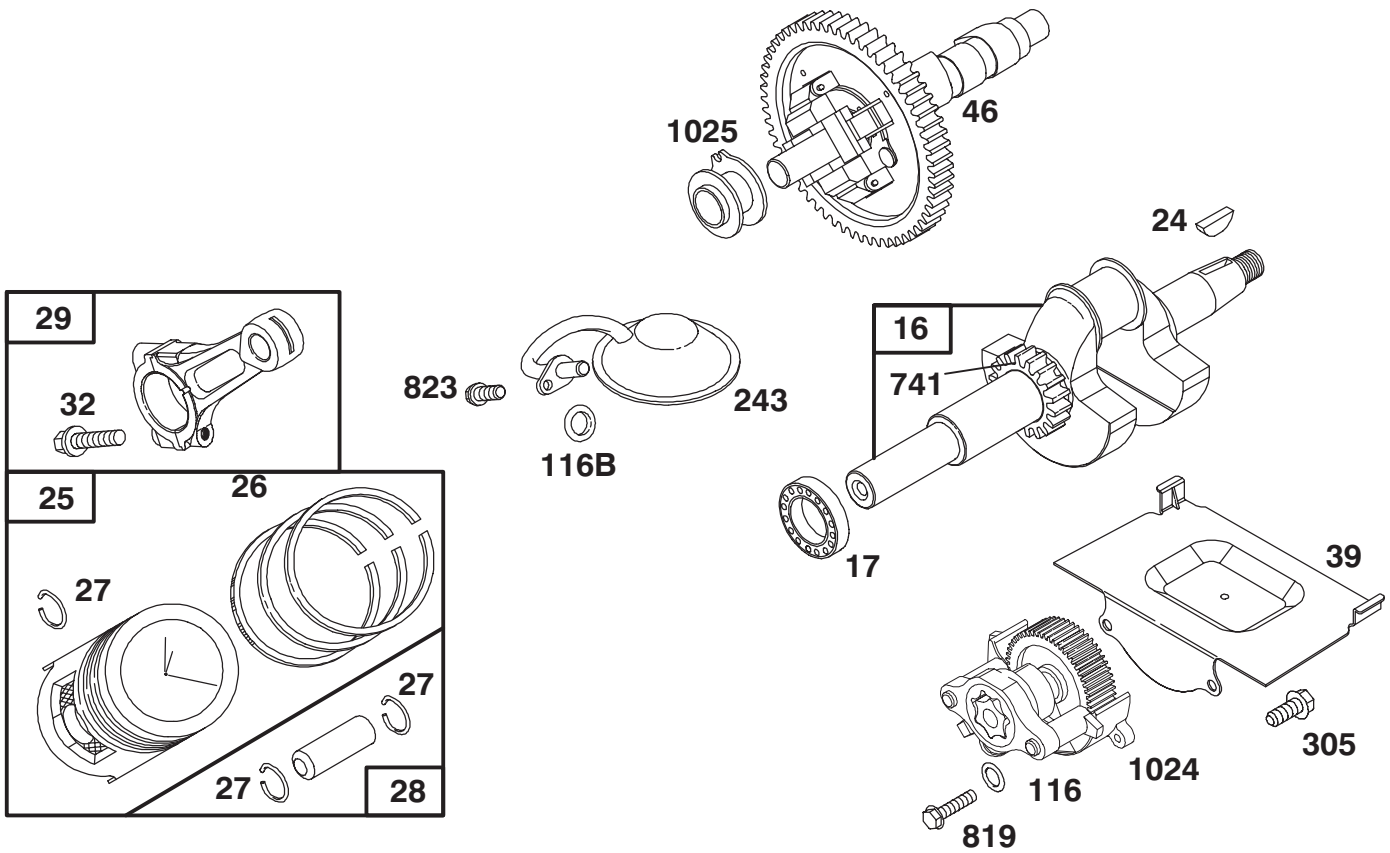
ENGINE BRIGGS & STRATTON MODEL 303447-0480-01

Ref. No.	Part No.	Description	No. Used
5.1	807987	Head – Cylinder (Cyl. #1)	1
5.2	807988	Head – Cylinder (Cyl. #2)	1
‡6	805193	Washer – Cylinder Head	1
*‡7	807986	Gasket – Cylinder Head	1
13	805097	Screw – Cylinder Head	1
21	491832	Plug – Oil Filler	1
33	805089	Valve – Exhaust	1
34	805090	Valve – Intake	1
35	805078	Spring – Valve	1
40	805092	Retainer – Valve Spring	1
42	805161	Retainer – Valve	1
45	805354	Tappet – Valve	1
50	805772	Manifold – Intake	1
*51	805700	Gasket – Carburetor Mtg.	1
*‡52	805023	Gasket – Intake Manifold	1
53	805466	Screw	1
54	805006	Screw	1
122	805328	Spacer – Carburetor	1
166	805343	Stud – Rocker Arm	1
*‡167	805420	Washer – Valve Cover	1
‡171	805019	Nut – Nylock	1
192	807623	Screw – Valve Adjustment (Incl. Jam Nut)	1

Ref. No.	Part No.	Description	No. Used
337	496018	Plug – Spark	1
383	19374	Wrench – Spark Plug	1
*‡524A	271983	Seal – Filler Plug	1
613	805158	Screw	1
635	805529	Elbow – Spark Plug	1
864	805083	Liner – Exhaust Port	1
868	805094	Seal – Valve Guide	1
871	805084	Guide – Valve	1
*‡883	805024	Gasket – Exhaust Manifold	1
*‡1022	805028	Gasket – Valve Cover	1
1023	805100	Cover – Valve	1
1023A	808032	Cover – Valve Used on Cyl. #1	1
1026	805352	Rod – Push Note: 805617 Rod – Push Used on Exhaust Side Only.	1
1029	807557	Arm – Rocker	1
1030	805342	Shaft – Rocker Arm	1
1031	805341	Support – Rocker Arm	1
1054	280275	Tie – Cable	1

*Included in Gasket Set – Part No. 807989.

‡Included in Valve Overhaul Kit – Part No. 807990.



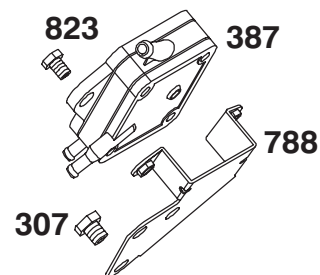
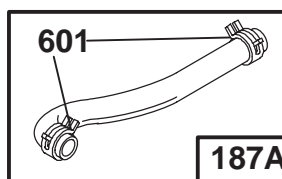
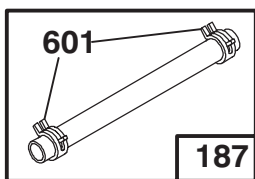
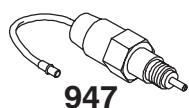
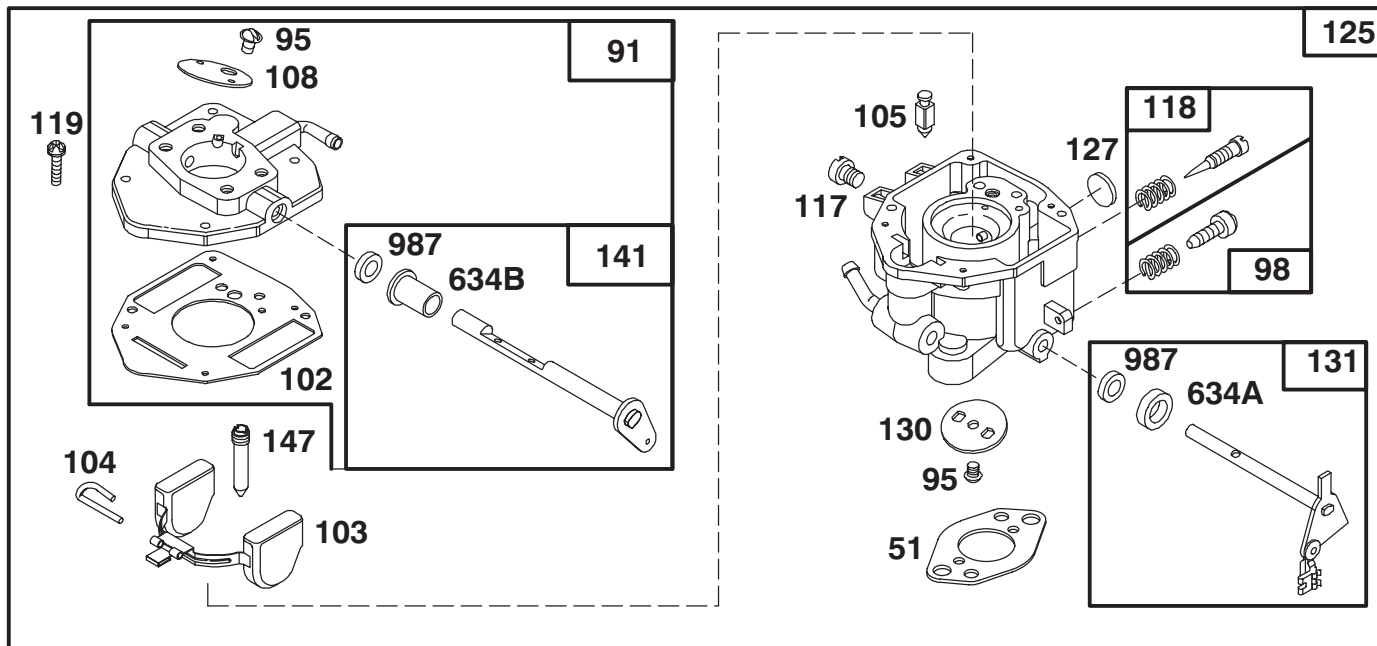
Assemblies include all parts shown in frames.

ENGINE BRIGGS & STRATTON MODEL 303447-0480-01

Ref. No.	Part No.	Description	No. Used
16	808056	Crankshaft Note: To Replace Crankshaft Timing Gear Key Order Part No. 94196	1
		807625 Washers – Thrust	
17	805754	Bearing – Ball	1
24	805016	Key – Flywheel	1
25	807619	Piston Assembly (Standard)	1
	807807	Piston Assembly .010 O.S.	1
	807809	Piston Assembly .020 O.S.	1
	807811	Piston Assembly .030 O.S.	1
26	807620	Ring Set – Piston (Standard)	1
	807808	Ring Set – Piston .010 O.S.	1
	807810	Ring Set – Piston .020 O.S.	1
	807812	Ring Set – Piston .030 O.S.	1

Ref. No.	Part No.	Description	No. Used
27	805099	Lock – Piston Pin	1
28	807621	Piston Pin Assembly	1
29	807900	Connecting Rod Assembly	1
32	805395	Screw – Connecting Rod	1
39	805654	Deflector – Oil	1
46	807542	Gear – Cam	1
*116	805058	O-Ring (Oil Pump)	1
*116B	805316	O-Ring (Pick – Up Tube)	1
243	807598	Screen – Oil Pump Pick-Up	1
305	805406	Screw	1
741	805675	Gear – Timing	1
819	805057	Screw	1
823	805317	Screw – Mounting	1
1024	807644	Oil Pump Assembly	1
1025	805313	Slider – Governor	1

*Included in Gasket Set – Part No. 807989.



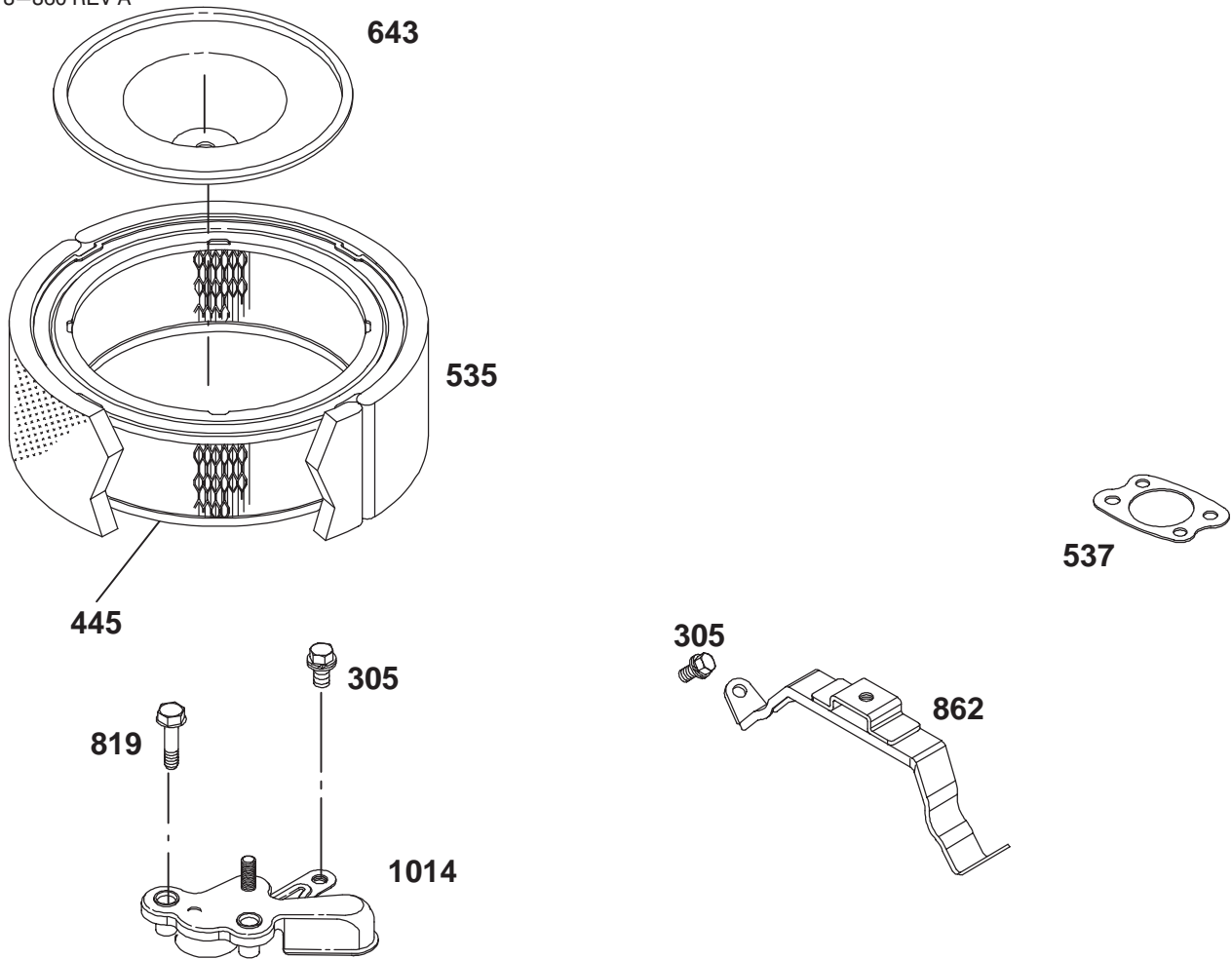
Assemblies include all parts shown in frames.

ENGINE BRIGGS & STRATTON MODEL 303447-0480-01

Ref. No.	Part No.	Description	No. Used
*51	805700	Gasket – Carburetor Mtg.	1
91	807919	Body – Upper Carburetor	1
95	805538	Screw – Valve Mtg.	1
98	807718	Screw – Throttle Adj.	1
†102	805541	Gasket – Intake Elbow	1
103	805546	Float Assembly	1
†104	805545	Pin – Float Hinge	1
†105	805547	Valve – Fuel Inlet	1
108	805539	Valve – Choke	1
†117	805853	Jet – Main	1
†118	807719	Valve – Idle Adjust Needle	1
119	805540	Screw – Upper Body Mtg.	1
125	807918	Carburetor Assembly	1
†127	805559	Plug – Welch	1
130	805554	Valve – Throttle	1

Ref. No.	Part No.	Description	No. Used
131	807720	Shaft – Throttle	1
141	807722	Shaft – Choke	1
†147	805553	Jet – Slow Speed	1
187	393815	Hose – Fuel (Cut to Suit)	1
187A	393867	Hose–Fuel	1
307	805025	Screw	1
387	491922	Pump – Fuel	1
601	93053	Clamp – Hose	1
†634A	805557	Collar – Throttle	1
634B	805543	Collar – Choke	1
788	807685	Bracket – Fuel Pump	1
823	805317	Screw – Mounting	1
947	807664	Solenoid	1
†987	805544	Seal – Shaft	1

†Included in Carburetor Kit – Part No. 807726.

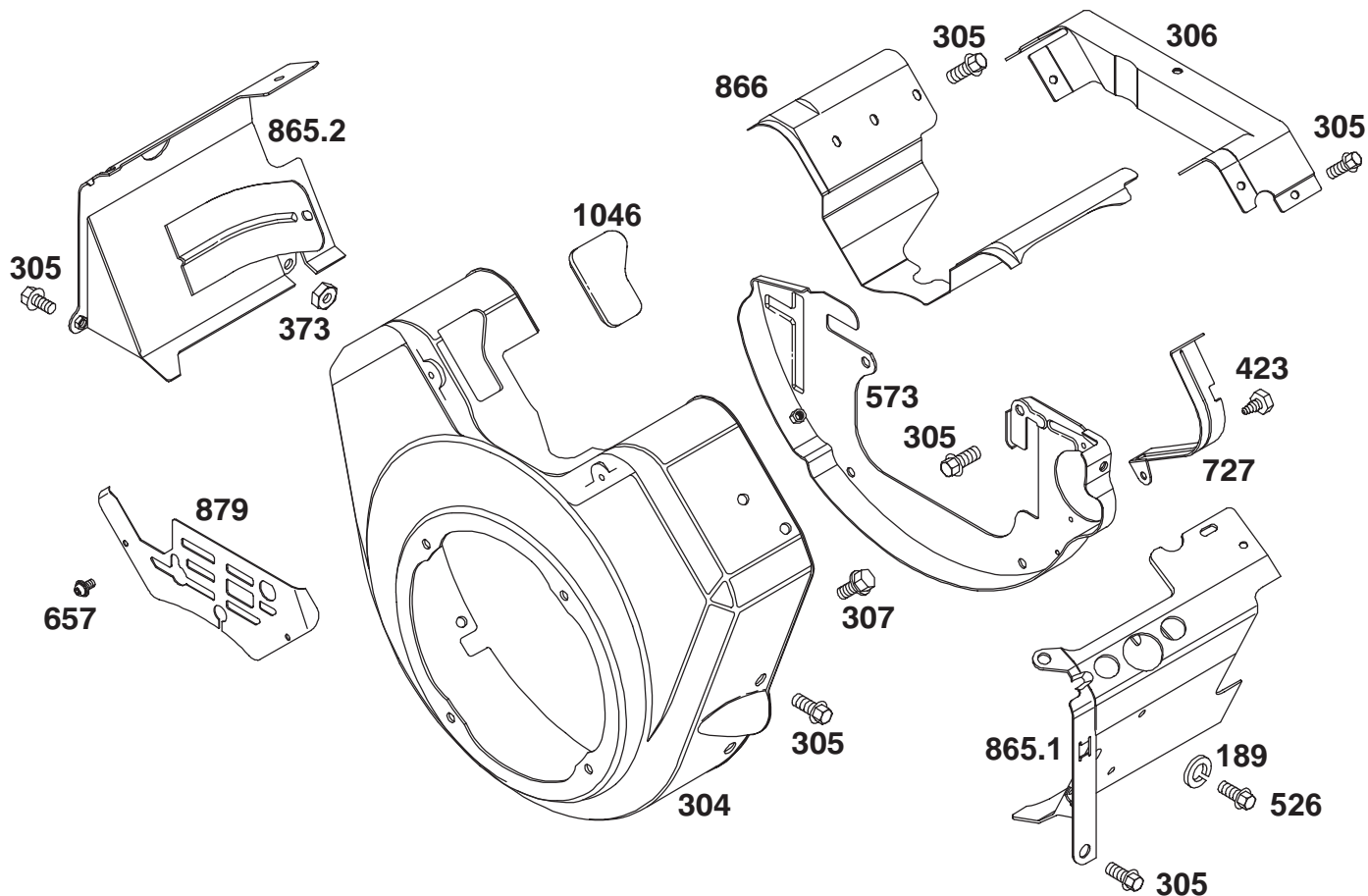


ENGINE BRIGGS & STRATTON MODEL 303447-0480-01

Ref. No.	Part No.	Description	No. Used
305	805406	Screw - Sem	1
445	394018	Cartridge - Air Cleaner	1
*537	805655	Gasket - Air Cleaner	1
643	805631	Plate - Air Cleaner	1

Ref. No.	Part No.	Description	No. Used
819	805057	Screw - Hex. Hd.	1
862	807796	Bracket - Air Cleaner	1
1014	807797	Shield - Assy.	1

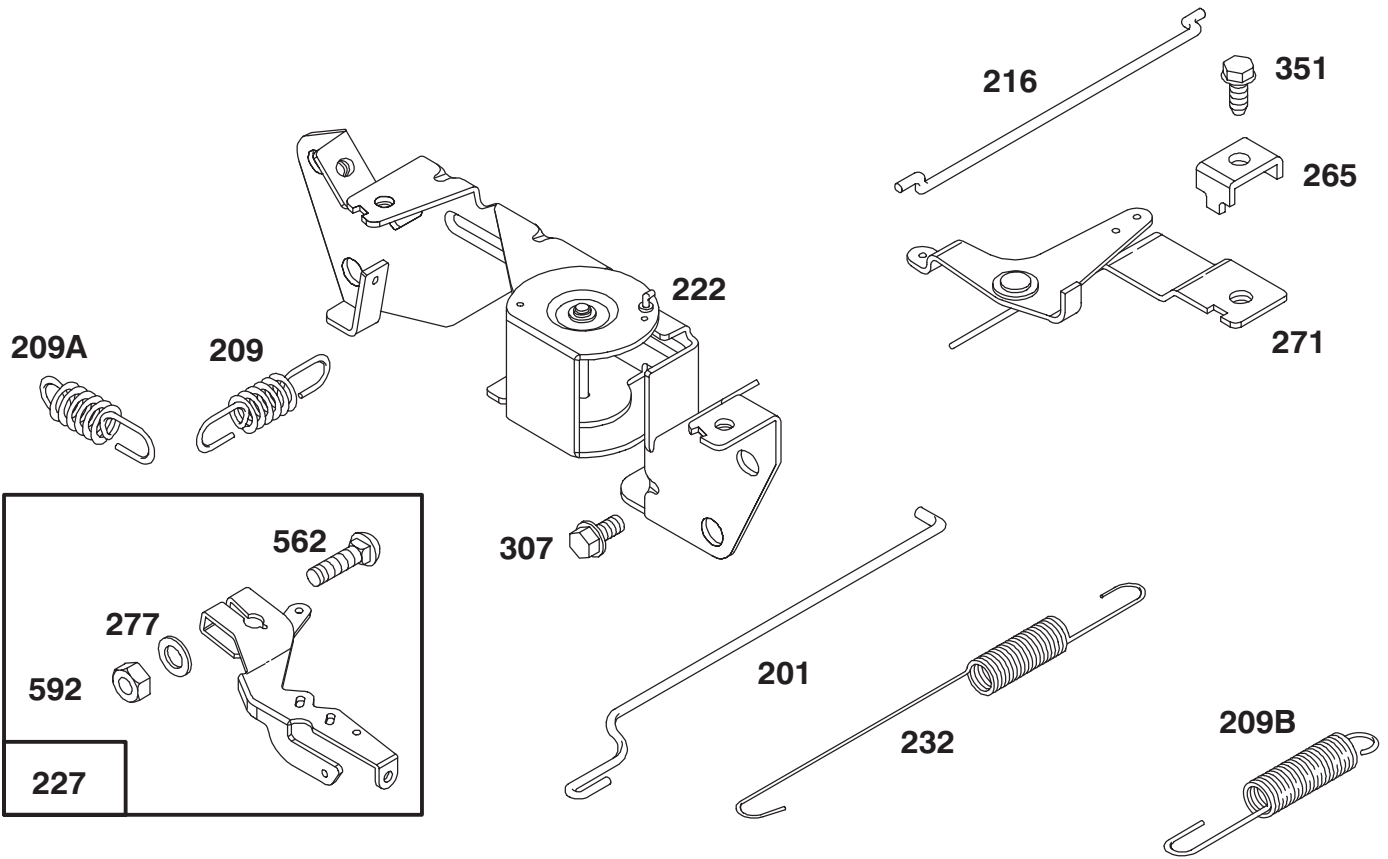
*Included in Gasket Set - Part No. 807989.



ENGINE BRIGGS & STRATTON MODEL 303447-0480-01

Ref. No.	Part No.	Description	No. Used
189	805449	Washer - Lock	1
304	807898	Housing - Blower	1
305	805406	Screw - Sem	1
306	807661	Cover - Valley Extension	1
307	805025	Screw	1
373	805383	Nut - Hex	1
423	805260	Screw	1
526	805448	Screw - Mounting	1
573	807663	Back Plate Assembly	1

Ref. No.	Part No.	Description	No. Used
657	805009	Screw	1
727	805505	Shield - Starter	1
865.1	807870	Cover - Air Guide (Cyl. #1)	1
865.2	807871	Cover - Air Guide (Cyl. #2)	1
866	805738	Valley Cover - Air Guide	1
879	805841	Cover - Carburetor	1
1046	805753	Plug - Blower Housing	1

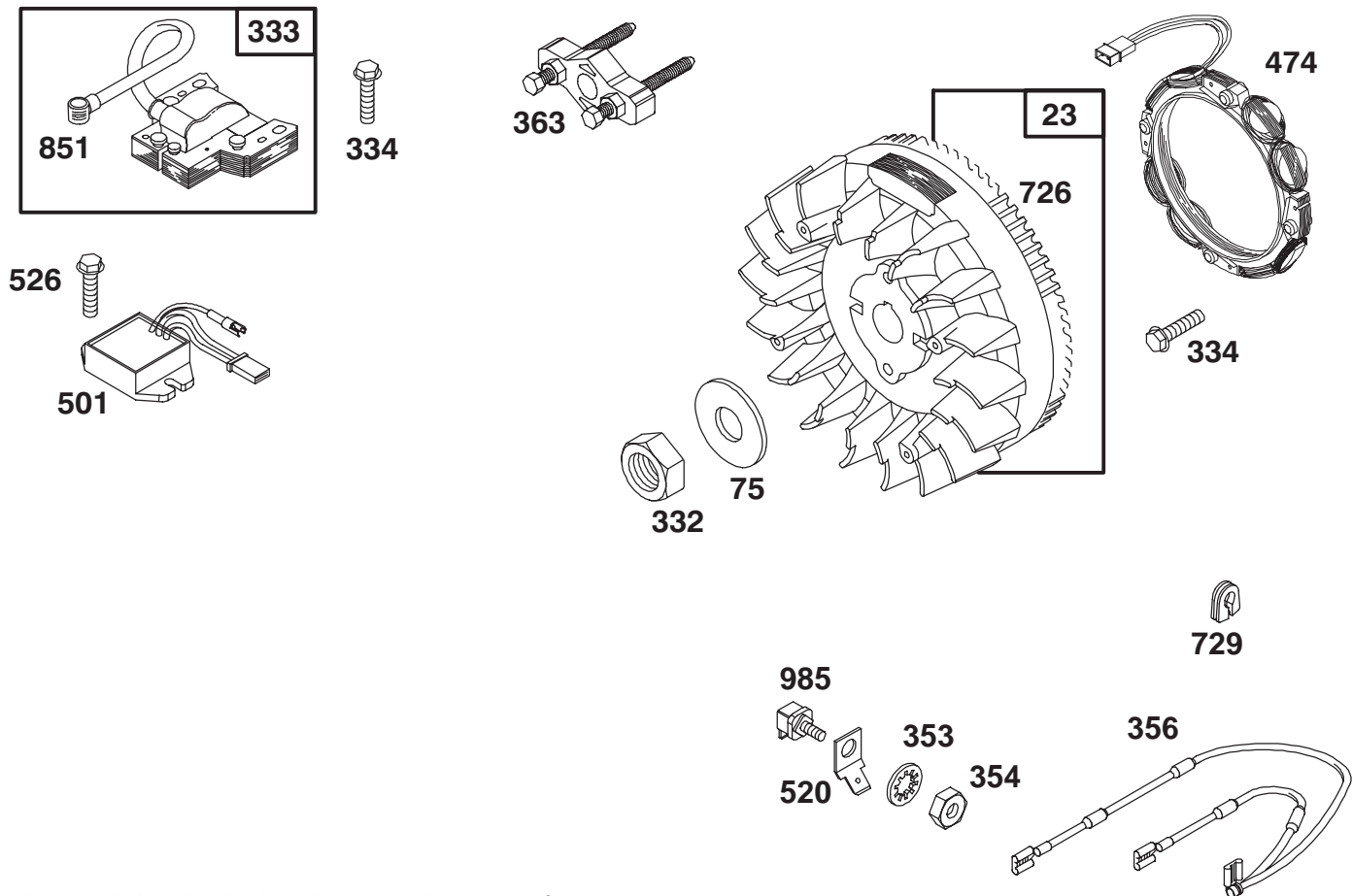


Assemblies include all parts shown in frames.

ENGINE BRIGGS & STRATTON MODEL 303447-0480-01

Ref. No.	Part No.	Description	No. Used
201	805480	Link – Governor	1
209	805463	Spring – Governor	1
209A	805453	Spring – Governed Idle	1
209B	805450	Spring – Governor	1
216	805439	Link – Choke	1
222	807610	Bracket – Governor Control	1
227	807528	Lever Assembly – Governor	1
232	805465	Spring – Governor Link	1

Ref. No.	Part No.	Description	No. Used
265	221535	Clamp – Casing	1
271	807609	Bracket – Choke Control	1
277	805018	Washer	1
307	805025	Screw	1
351	805169	Screw – Hex. Head	1
562	805381	Bolt	1
592	805383	Nut – Hex.	1

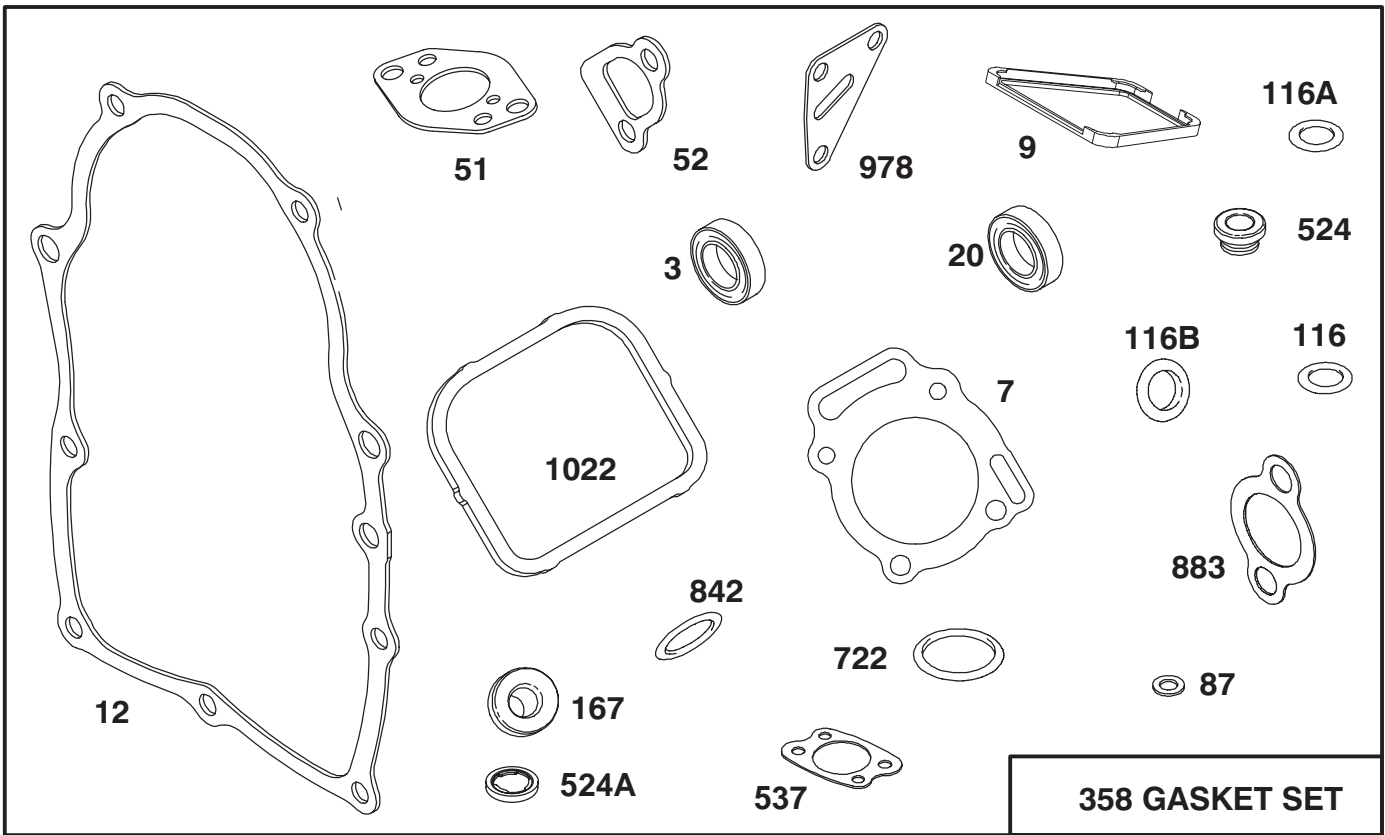


Assemblies include all parts shown in frames.

ENGINE BRIGGS & STRATTON MODEL 303447-0480-01

Ref. No.	Part No.	Description	No. Used
23	808128	Flywheel – Magneto	1
75	805007	Washer – Spring	1
332	805021	Nut – Hex.	1
333	492341	Armature – Magneto	1
334	805407	Screw – Mounting	1
353	92791	Washer – Lock (Internal Tooth)	1
354	90576	Nut – Hex.	1
356	493792	Wire – Assy.	1
363	19203	Puller – Flywheel	1

Ref. No.	Part No.	Description	No. Used
474	393295	Stator – Alternator	1
501	394890	Regulator – Alternator	1
520	93722	Terminal – Spade	1
526	805448	Screw – Mtg.	1
726	808162	Gear – Flywheel Ring Includes Mounting Hardware.	1
729	805641	Grommet	1
851	221798	Terminal – Ignition Cable	1
985	398525	Insulator	1



Assemblies include all parts shown in frames.

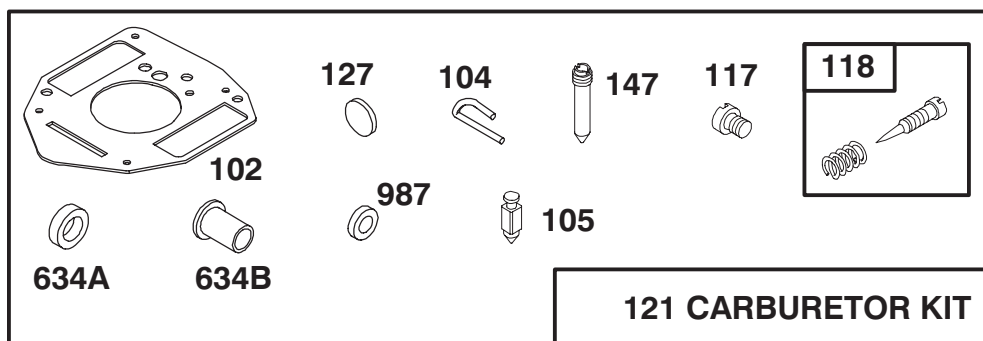
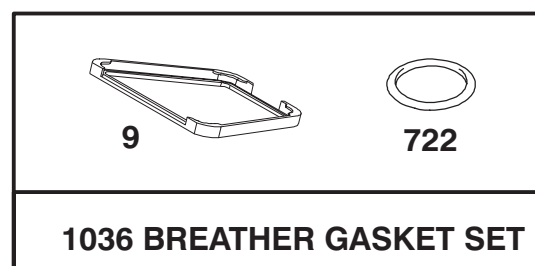
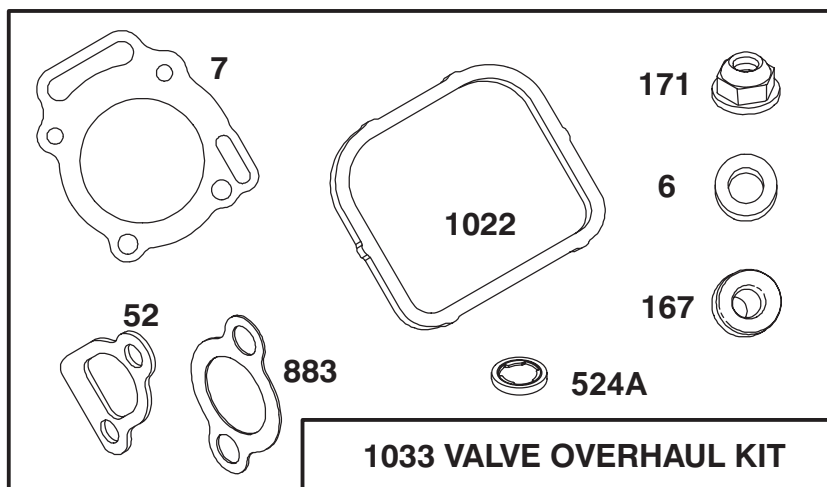
ENGINE BRIGGS & STRATTON MODEL 303447-0480-01

Ref. No.	Part No.	Description	No. Used
*3	805101	Seal - Oil	1
*‡7	807986	Gasket - Cylinder Head	1
*9	805379	Gasket - Breather	1
*12	805112	Gasket - Crankcase Cover	1
*20	805049	Seal - Oil	1
*51	805700	Gasket - Carburetor Mtg.	1
*52	805023	Gasket - Intake Manifold	1
*87	805054	Seal - Governor Shaft	1
*116	805058	O-Ring (Oil Pump)	1
*116A	805198	O-Ring (Crankcase Cover)	1
*116B	805316	O-Ring (Pick - Up Tube)	1

Ref. No.	Part No.	Description	No. Used
*‡167	805420	Washer - Valve Cover	1
358	807989	Gasket Set	1
*524	805259	Seal - Filler Tube	1
*‡524A	271983	Seal - Filler Plug	1
*537	805655	Gasket - Air Cleaner	1
*722	805483	Seal - Breather Screw	1
*842	805386	O-Ring	1
*883	805024	Gasket - Exhaust Manifold	1
*978	805250	Gasket - Oil Filter Adapter	1
*‡1022	805028	Gasket - Valve Cover	1

*Included in Gasket Set - Part No. 807989.

‡Included in Valve Overhaul Kit - Part No 807990.



Assemblies include all parts shown in frames.

ENGINE BRIGGS & STRATTON MODEL 303447-0480-01

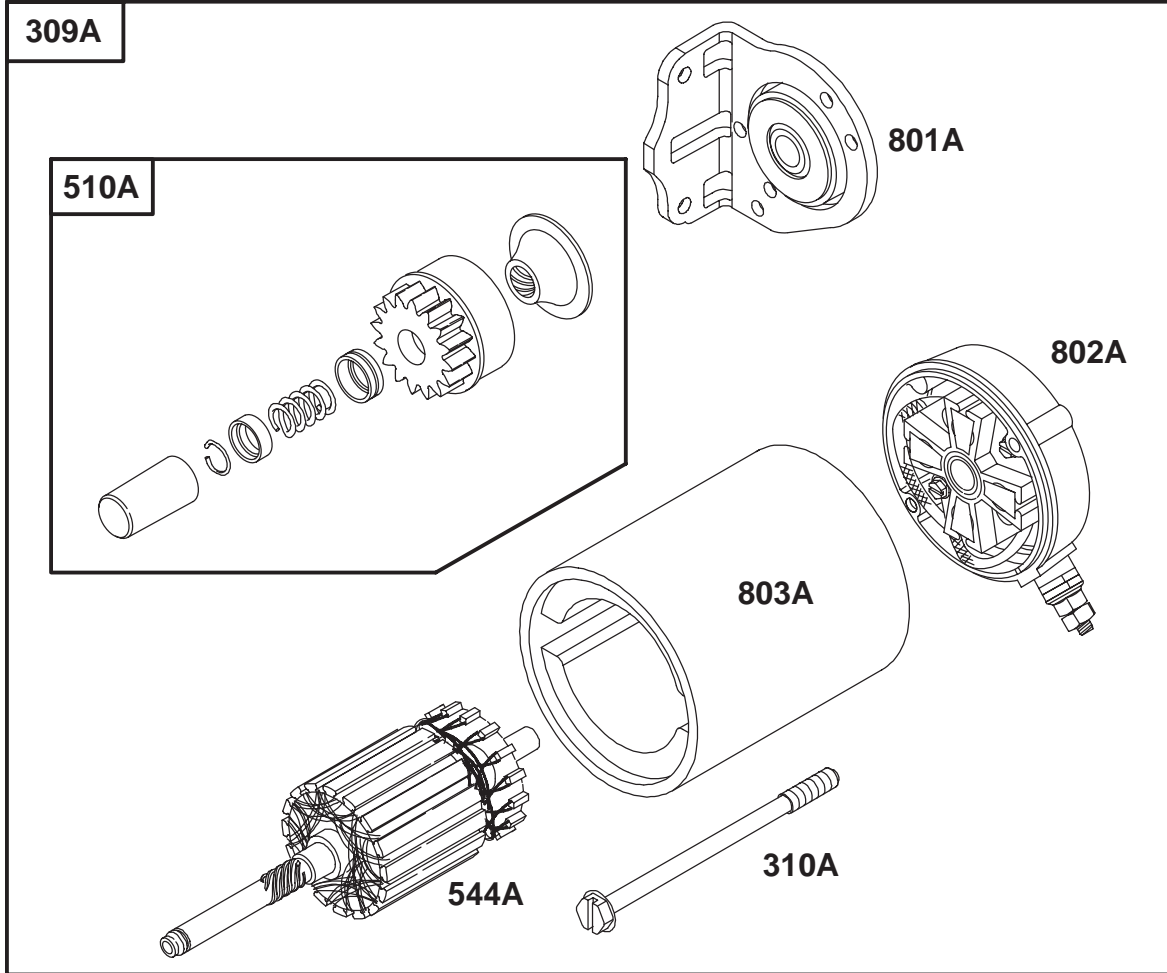
Ref. No.	Part No.	Description	No. Used
‡6	805193	Washer – Cylinder Head	1
*‡7	807986	Gasket – Cylinder Head	1
*9	805379	Gasket – Breather	1
*‡52	805023	Gasket – Intake Manifold	1
†102	805541	Gasket – Intake Elbow	1
†104	805545	Pin – Float Hinge	1
†105	805547	Valve – Fuel Inlet	1
†117	805853	Jet – Main	1
†118	807719	Valve – Idle Adjusting	1
121	807726	Carburetor Kit	1
†127	805559	Plug – Welch	1
†147	805553	Jet – Slow Speed	1

Ref. No.	Part No.	Description	No. Used
*‡167	805420	Washer – Valve Cover	1
‡171	805019	Nut – Nylock	1
*‡524A	271983	Seal – Filler Plug	1
†634A	805557	Collar – Throttle	1
†634B	805543	Collar – Choke	1
*722	805483	Seal – Breather Screw	1
*‡883	805024	Gasket – Exhaust Manifold	1
†987	805544	Seal – Shaft	1
*‡1022	805028	Gasket – Valve Cover	1
1033	807990	Overhaul Kit – Valve	1
1036	807688	Gasket Set – Breather	1

*Included in Gasket Set – Part No. 807989.

†Included in Carburetor Kit – Part No. 807726.

‡Included in Valve Overhaul Kit – Part No. 807990.



ENGINE BRIGGS & STRATTON MODEL 303447-0480-01

Ref. No.	Part No.	Description	No. Used
188	805247	Screw-Hex. Head	1
309A	808106	Motor-Starter	1
310A	496880	Bolt-Thru	1
510A	496881	Drive-Starter	1
544A	496816	Armature-Starter	1

Ref. No.	Part No.	Description	No. Used
801A	496814	Cap-Drive	1
802A	496813	Cap-End (Includes Brush Set 496887)	1
803A	496815	Housing-Starter	1

TORO PART NUMBER INDEX

3318—860 REV A

Part No.	Description	Pg. No.	Ref. No.	Qty.	Part No.	Description	Pg. No.	Ref. No.	Qty.
117344	Handle — Latch	1	33	2	56—7720	Bolt — Battery	23	16	2
3—6498	Washer — Thrust	15	17	1	56—7976	Clamp — Tube	18	31	2
10—6830	Stud — Drive	4	18	4	57—5420	Screw — Shoulder	24	2	1
10—6850	Drum — Brake	22	9	2	62—6660	Spacer	8	13	4
10—7070	Key — Square	10	22	1	63—8360	Key — Ignition	6	7	2
18—6320	Washer — Steering	4	24	3	63—8410	Washer — Flat	23	28	4
18—6380	Pin — Steering Adjustment	4	21	2	63—8410	Washer — Flat	24	21	4
18—6380	Pin — Steering, Adjust	15	12	1	65—8770	Bushing — Flange	4	7	2
18—7160	Pin — Cylinder	18	13	1	66—0120	Knob — Throttle	6	5	1
18—7310	Pin — Cylinder, Rake	18	8	1	66—2950	Asm—Hourmeter	6	2	1
21—5360	Asm—Hydraulic Hose	10	4	1	67—8050	Bearing — Needle	11	37	1
21—5360	Hose — Hydraulic	24	28	1	67—8060	Seal — Lip	11	36	1
21—8640	Latch — Lever, Valve	16	20	1	68—8990	Asm—Head, Filter	24	8	1
22—4670	Hose — Hydraulic	18	4	2	69—8930	Washer	18	21	4
22—4670	Hose — Hydraulic	16	30	2	69—8960	Spacer	18	22	2
22—4670	Hose — Hydraulic	10	34	2	69—9760	Plate — Cover	18	32	1
22—8330	Plug	17	1	2	70—2770	Head	21	10	1
22—8340	Spring	17	3	2	70—2780	Piston	21	5	1
22—8350	Ball	17	4	2	70—9840	Lining — Shoe	22	33	4
22—8360	Pin — Cam	17	6	2	70—9850	Clip — Retaining	22	31	2
22—8370	Seat — Check Valve	17	5	2	70—9860	Shaft — Cam	22	36	2
22—8380	Retainer — Spring	17	10	2	70—9870	Plate — Backing	22	10	2
22—8390	Spring Retainer	17	12	1	70—9880	Spring — Return	22	32	4
22—8410	Spring	17	11	1	71—1500	Asm—Brake	22	*	2
22—8420	Spool	17	8	1	71—4411	Spacer — Coupling	10	18	4
22—8480	Ring — Spool Retaining	17	14	1	74—0340	Cushion — Rubber	8	10	2
22—8490	Ring — Retaining	17	15	1	74—0720	Tube — Manual	8	5	1
22—8500	O—Ring	17	9	2	74—9100	Pad — Pedal, Forward	14	15	1
23—3030	Spacer Float	17	13	1	74—9110	Pad — Pedal, Reverse	14	5	1
23—9740	Filter — Oil	24	12	1	75—0540	Tether — Oil Cap	24	27	1
25—2380	Plate — Thrust	12	50	1	75—4705	Hose — Fuel	9	8	1
25—2400	Gasket — Cap, End	11	14	1	75—5470	Spacer	15	22	1
25—2430	Pin	11	13	1	75—9830	Motor — Hydraulic, Wheel	4	42	1
25—2450	Swashplate	12	48	1	75—9831	Hydraulic Motor — Wheel	18	12	1
25—2460	Plug	11	29	2	75—9840	Hydraulic Motor — Wheel	18	16	1
25—2470	Kit—Shim	11	30	2	76—0810	Asm—Housing	19	*	1
25—2480	Spring	11	42	1	76—0810	Asm—Housing	20	*	1
25—2490	Ball	11	4	2	76—0810	Asm—Housing	5	*	1
25—2500	Shaft — Trunnion	11	43	1	76—0820	Link — Drive	19	13	1
25—2510	Washer	11	26	2	76—0820	Link — Drive	20	13	7
25—2570	Spring	11	31	1	76—0820	Link — Drive	5	13	7
25—2600	Kit—Cylinder Block	11	16	1	76—0830	Rotor Set	19	*	1
25—2640	Spring	11	3	2	76—0830	Rotor Set	20	*	1
25—2650	Plug	11	1	2	76—0840	Manifold	19	22	1
25—2690	Housing — Pump, Charge	11	35	1	76—0840	Manifold	20	22	1
25—3180	Kit—Valve, Check	12	*	1	76—0840	Manifold	5	22	1
25—3210	Seal — Lip	11	25	2	76—0850	Bearing — Thrust	19	12	1
26—2950	Standoff — Wire	10	7	1	76—0850	Bearing — Thrust	20	12	1
26—3790	Nut — Lock	22	4	2	76—0850	Bearing — Thrust	5	12	1
26—3790	Nut — Lock	4	39	1	76—0860	Shaft — Coupling	19	11	1
27—1960	Hub — Engine	10	21	1	76—0860	Shaft — Coupling	20	11	1
27—2320	Bearing — Side Flange	22	26	2	76—0860	Shaft — Coupling	5	11	1
28—4210	Solenoid — Starter	6	17	1	76—0870	Plate — Wear	19	18	1
28—8080	Boot — Terminal	23	33	1	76—0870	Plate — Wear	20	18	1
29—6163	Switch — Neutral	15	2	1	76—0870	Plate — Wear	5	18	1
38—3400	Bumper	9	45	1	76—0880	Asm—Commutator	19	*	1
38—3400	Snubber — Rubber	18	41	2	76—0880	Asm—Commutator	20	*	1
38—3400	Snubber — Rubber	2	44	1	76—0880	Asm—Commutator	5	*	1
43—1710	Asm—Valve	16	14	1	76—0890	Asm—Cover, End	19	29	1
43—1730	Body	17	7	1	76—0940	Asm—Cover, End	20	24	1
43—5220	Ring — Retaining	21	12	1	76—0940	Asm—Cover, End	5	24	1
43—5230	Shaft with Clevis	21	13	1	76—0950	Rotor Set	5	*	1
43—5260	Barrel — w/Clevis & Ports	21	2	1	76—1020	Screw — HH	20	14	1
46—8400	Bearing — Roller	12	51	1	76—1030	Screw — HH	5	14	1
46—8560	Screw — HFH	1	9	6	76—1040	Screw — HH	19	14	7
49—2040	Screw — HFH	15	8	3	76—1420	Wheel — Steering	4	1	1
49—8510	Kit—Relief, Charge	12	*	1	76—8640	Stud — Traction	15	18	1
49—8520	Kit—Implement Relief	12	*	1	80—8650	Coupling — Rubber	10	23	2
49—9600	Hub — Pump	10	24	1	83—0020	Asm—Ignition Switch	6	12	1
51—0600	Hose — Hydraulic	18	30	2	83—1390	Fitting — Fuel Shut—Off	23	24	1
52—2480	Spacer	18	40	1	83—1770	Element — Air Cleaner	9	31	1

*Not Illustrated

TORO PART NUMBER INDEX (Cont.)

Part No.	Description	Pg. No.	Ref. No.	Qty.	Part No.	Description	Pg. No.	Ref. No.	Qty.
83-2490	Boot	9	42	1	92-8983	Pivot	16	18	1
83-7000	Cylinder - Hydraulic	18	7	1	92-8985	Decal - Operating	1	7	1
83-7250	Kit-Seal Repair	21	*	1	92-8996	Screen	9	6	1
83-7260	Cone - Charge Relief	11	32	2	92-8997	Cooler - Oil	1	2	1
83-9310	Arm - Brake, RH	22	30	2	93-2195	Element - Air Cleaner	3	3	1
84-1990	Rod - Adjusting	22	11	2	93-4365	Asm-Oil Cap	24	1	1
84-2000	Bracket - Brake	22	12	2	93-6668	Decal - Battery	23	29	1
85-0290	Spacer - Support, Seat	16	17	2	93-6838	Hub - Wheel	22	5	2
85-0420	Plate - Cover	9	32	1	93-6838	Hub - Wheel	4	40	1
85-0430	Knob - Air Cleaner	9	36	1	93-6850	Lever - Brake	22	14	2
85-0440	Shield - Carburetor, Inlet	9	29	1	93-7170	Cap - Fuel	23	1	1
85-0450	Screw	9	30	2	93-7251	Decal - Service (Europe)	8	9	1
85-0460	Screw - Washer Face	9	37	3	93-7252	Decal - CE Mark	1	28	1
85-0470	Gasket - Carburetor	9	39	1	93-7276	Decal - Danger	23	30	1
85-0540	Screw	9	38	4	93-9051	Decal - Eccentric Bolt	15	9	1
85-6540	Stud - Drive Type	22	1	8	93-9052	Decal - Shields	6	35	1
85-6610	Shaft - Steering Upper	4	3	1	94-1392	Pad - Rubber	1	32	2
85-8000	Asm-Engine	9	16	1	94-1414	Valve - Vacuator	3	5	1
85-8290	Tire	22	2	2	94-1883	Fender - Rear, LH	25	9	1
85-8290	Tire	4	19	1	94-1884	Fender - Rear, RH	25	1	1
85-8300	Lever - Pump	15	5	1	94-1885	Bracket - Support, Fender	25	8	1
85-8360	Gasket - Ring	9	20	1	94-1886	Bracket - Support, Fender	25	7	1
85-8370	Asm-Cover, Air Cleaner	9	19	1	94-1887	Bracket - Support, Fender	25	10	1
85-8430	Asm-Base, Air Cleaner	9	21	1	94-1888	Bracket - Support, Fender	25	5	1
85-8460	Asm-Switch Arm	15	15	1	94-2690	Filter - Fuel	23	31	1
85-8940	Flangette - Relube	4	17	1	94-3652	Asm-Cover	3	4	1
85-8950	Flangette - Standard	4	15	1	94-4519	Tube - Convoluted	2	39	1
85-8960	Spacer	14	4	1	94-6116	Rim - Wheel	4	48	1
85-9030	Spring - Extension	15	13	1	94-6116	Rim	22	34	2
85-9120	Spacer	15	21	1	94-8178	Kit-Seal	19	*	1
85-9150	Plate - Switch	15	3	1	94-8178	Kit-Seal	20	*	1
85-9180	Sprocket	4	9	1	94-8178	Kit-Seal	5	*	1
85-9200	Knuckle - Steering	4	33	1	95-0550	Asm-Manifold	9	18	1
85-9210	Shaft - Steering, Lower	4	34	1	95-0551	Tube - Exhaust	9	17	1
85-9550	Clamp - Rubber	1	3	2	95-0552	Muffler	9	1	1
85-9670	T-Nut	1	4	2	95-0553	Plate - Pump	15	10	1
86-7450	Wire - Battery, Ground	9	26	1	95-0555	Hose - Hydraulic	24	24	1
86-7450	Wire - Battery-Ground	23	27	1	95-0555	Hose - Suction	10	8	1
86-7450	Wire - Ground, Battery	7	4	1	95-0556	Base - Engine	9	15	1
86-7570	Asm-Wire	9	27	1	95-0557	Bracket - Muffler	9	7	1
86-7570	Wire - Battery, Solenoid	23	34	1	95-0559	Tube - Rear, RH Rear Motor	18	2	1
86-7640	Box - Litter	23	26	1	95-0560	Tube - Front, LH Rear Motor	18	9	1
88-8170	Asm-Housing, Variable	11	45	1	95-0562	Tube - Front, Motor RH	18	27	1
88-8180	Shaft - Trunnion	11	27	1	95-0563	Tube - Front, Motor LH	18	28	1
88-8190	Bearing - Journal	11	24	1	95-0563	Tube - Front, Motor LH	2	45	1
88-8210	Plug	11	33	2	95-0564	Tube - Front, RH Rear Motor	18	1	1
88-8230	Seal - Lip	12	53	1	95-0565	Hose - Hydraulic	24	14	1
88-8350	Tab - Bearing	4	11	1	95-0567	Tube - Rear, LH Rear Motor	18	10	1
88-8480	Bracket - Pivot	16	9	1	95-0568	Bracket - Bulkhead	18	26	1
88-8640	Knob - Air Cleaner	9	35	3	95-0574	Harness - Wire	7	1	1
92-1678	Battery	23	15	1	95-0574	Harness - Wire	6	34	1
92-1705	Screen - Filter	24	20	1	95-0574	Harness - Wire	9	43	1
92-1715	Spacer	22	13	8	95-0574	Wire Harness	2	40	1
92-2343	Pedal	14	6	1	95-0575	Tube - Shuttle Valve	18	17	1
92-2344	Stud - Adjuster, Trunnion	14	11	1	95-0575	Tube - Valve, Shuttle	16	33	1
92-5018	Clamp - Battery	23	12	1	95-0576	Base - Fuel Tank	23	4	1
92-5035	Asm-Steering Shaft	4	5	1	95-0577	Fitting - Bulkhead, Tee	18	25	2
92-5039	Chain	4	23	1	95-0578	Fork - Offset	4	10	1
92-7152	Hose - Fuel	23	8	1	95-0581	Fitting - Hydraulic 90°	24	16	1
92-7158	Tread - Floor, RH	1	25	1	95-0582	Hose - Air	9	33	1
92-7159	Tread - Floor, LH	1	13	1	95-0582	Hose - Air	1	22	1
92-7160	Clip - Fuel Hose	23	9	1	95-0584	Rod - Pump, Control	14	10	1
92-7186	Tank - Fuel	23	2	1	95-0586	Asm-Clamp, Muffler	9	4	2
92-7187	Tank - Hydraulic	24	4	1	95-0587	Asm-Hydraulic Pump	10	9	1
92-8776	Plug	11	5	2	95-0588	Panel - Dash	6	11	1
92-8777	O-Ring	11	6	2	95-0590	Base - Hydraulic Tank	24	18	1
92-8969	Spindle	4	38	1	95-0591	Hose - Hydraulic	10	14	1
92-8972	Clamp - Seat	8	8	2	95-0591	Hose - Hydraulic	2	43	1
92-8973	Angle	8	12	2	95-0592	Hose - Hydraulic	10	11	1
92-8976	Seat	8	1	1	95-0592	Hose - Hydraulic	16	32	1
92-8981	Lever - Lift	16	6	1	95-0595	Asm-Hydraulic Hose	10	5	2

*Not Illustrated

TORO PART NUMBER INDEX (Cont.)

Part No.	Description	Pg. No.	Ref. No.	Qty.	Part No.	Description	Pg. No.	Ref. No.	Qty.
95-0595	Hose - Hydraulic	18	35	2	237-79	O-Ring	1	29	2
95-0597	Asm-choke Control	6	6	1	237-79	O-Ring	10	29	3
95-0598	Control - Throttle	6	15	1	237-79	O-Ring	18	37	4
95-0599	Asm-Wire	23	*	1	237-80	O-Ring	24	25	1
95-0599	Asm-Wire	6	19	1	237-80	O-Ring	10	31	1
95-0599	Asm-Wire	2	42	1	237-80	O-Ring	11	34	2
95-0599	Asm. - Wire	7	2	1	237-80	O-Ring	4	49	2
95-0600	Asm-Frame	4	29	1	237-81	O-Ring	24	23	2
95-0601	Shroud - Lift Valve	16	2	1	237-86	O-Ring	11	2	4
95-0604	Tube - Extension	4	27	1	237-95	O-Ring	11	40	1
95-0607	Decal - SandPro 3020	1	27	2	240-5	Grommet - Rubber	18	23	2
95-0610	Asm-Cover	1	8	1	240-9	Grommet	23	25	3
95-0611	Bracket - RH	2	34	1	240-11	Grommet	23	3	4
95-0612	Bracket - LH	2	35	1	240-11	Grommet	24	19	4
95-0618	Hose - Fuel	23	22	1	242-50	Nut - Lug	22	3	8
95-0619	Hose - Gas Line	23	32	1	242-50	Nut - Lug	4	13	4
95-0619	Hose - Gas Line	9	12	1	249-40	Keeper	2	36	2
95-0620	Strip - Retainer	1	19	1	2410-73	Retainer - Tether	24	26	1
95-0625	Rod - Traverse	22	24	1	2412-36	Clamp - Hose	23	7	2
95-0628	Rod - Brake	22	25	1	2412-73	Clamp - R	23	20	1
95-0628	Rod - Brake	16	35	1	2412-73	R-Clamp	9	14	1
95-0629	Fitting - Hose, Push On	10	10	1	2412-92	Clamp - Hose	1	21	2
95-0631	Mount - Pump	10	25	1	2412-92	Clamp - Hose	9	34	1
95-0632	Asm-Cover	10	2	1	2412-93	R-Clamp	4	45	2
95-0636	Lever - Brake	16	21	1	2412-98	Clamp - Hose	23	23	4
95-0637	Plate - Seat	8	11	1	2412-98	Clamp - Hose	9	28	1
95-0642	Locknut - Bulkhead	18	24	2	2412-129	Clamp - Hose	10	30	1
95-0643	Tube - Hydraulic	16	34	1	2412-129	Clamp - Worm	24	3	2
95-0643	Tube - Valve to Cooler	1	6	1	2412-133	Clamp - R	8	3	2
95-0645	Plate - Hot Surface	9	25	1	251-307	Bearing	15	20	2
95-0646	Decal - Service	8	9	1	251-352	Asm-Bearing	4	16	1
95-0647	Decal - Control Panel	16	1	1	252-82	Bearing - Needle	11	44	1
95-0648	Decal - Dash	6	9	1	254-61	Cup - Bearing	4	28	2
95-5805	Asm-Air Cleaner	1	23	1	254-70	Cone - Bearing	4	25	2
95-5806	Asm-Band, Mounting	1	24	1	256-113	Bushing - Flange	15	14	2
95-5807	Spacer	1	16	2	256-185	Bushing - Sleeve	4	4	1
95-5808	Cap - End	11	7	1	256-219	Bushing - Flange	14	3	2
95-5809	Ball Bearing	11	20	1	2710-11	Link - Connecting	4	22	2
95-5810	Shaft	12	47	1	2710-20	Link - Offset	16	8	1
95-5811	Plate - Valve	11	15	1	282-2	Clevis	22	15	2
95-5812	Asm. - Gerotor	11	39	1	282-2	Clevis	16	22	1
95-5813	Ring - Retaining	11	21	1	283-1	Pin - Clevis	22	16	2
95-5814	Valve - Acceleration	11	9	2	283-14	Pin - Clevis	16	24	1
95-5815	Spring - Valve, Acceleration	11	8	1	285-17	Plug	3	1	1
95-5816	Plug	11	11	2	285-17	Plug - Pipe	11	23	2
95-5817	Shield - Front	1	26	1	302-5	Fitting - Grease	4	26	1
95-5818	Hood	1	1	1	302-60	Fitting - Grease	15	16	1
95-5825	Asm-Wire	6	18	1	321-3	Screw - HH	24	6	2
95-5825	Asm-Wire	2	41	1	321-4	Screw - HH	22	17	8
95-5825	Wire	7	3	1	321-4	Screw - Hex. Hd.	8	16	3
95-5826	Shield - Rubber	1	20	1	321-18	Screw - HH	18	29	1
95-5827	Shield - Muffler	9	22	1	321-23	Screw - HH	16	15	4
95-5828	Strip - Wear	2	38	2	322-2	Screw - HH	1	18	2
95-5833	Guide - Lever, Lift	16	36	1	322-3	Screw - HH	23	18	2
95-5840	Shield - Seat Base	8	15	1	322-4	Screw - HH	11	38	4
95-7861	Decal - Infield Pro 3020	2	*	2	322-5	Screw - HH	4	6	4
218-461	Nut - Hex.	6	26	1	322-5	Screw - HH	1	15	4
232-35	Stem - Valve	4	46	1	322-6	Screw - HH	9	2	3
232-35	Stem - Valve	22	35	2	322-6	Screw - Hex. Hd.	8	2	4
233-21	Knob	16	5	1	322-8	Screw - HH	15	19	1
237-30	O-Ring	11	12	2	322-8	Screw - HH	16	28	2
237-42	O-Ring	17	2	2	322-10	Screw - HH	9	13	4
237-42	O-Ring	16	31	2	322-14	Screw - HH	14	1	1
237-42	O-Ring	10	32	2	322-14	Screw - HH	1	11	2
237-42	O-Ring	18	39	1	322-17	Screw - HH	10	19	4
237-78	O-Ring	21	1	2	323-6	Screw - HH	24	10	3
237-78	O-Ring	19	25	2	323-6	Screw - HH	23	13	3
237-78	O-Ring	16	29	2	323-6	Screw - HH	10	15	6
237-78	O-Ring	18	36	2	323-7	Screw - HH	25	6	6
237-79	O-Ring	11	10	3	323-10	Screw - HH	15	4	1
237-79	O-Ring	24	22	1	323-29	Screw - HH	4	14	3

*Not Illustrated

TORO PART NUMBER INDEX (Cont.)

Part No.	Description	Pg. No.	Ref. No.	Qty.	Part No.	Description	Pg. No.	Ref. No.	Qty.
323-45	Screw - HH	12	55	4	3290-378	Tie - Cable	9	44	1
325-5	Screw - HH	18	19	4	3290-378	Tie - Wire	2	37	3
325-7	Screw - HH	10	6	2	3290-477	Washer - Wave	16	37	1
325-14	Screw - HH	22	6	8	3295-26	Rivet - Semi Tubular	1	31	2
3217-9	Nut - Hex.	22	8	4	3296-2	Nut - Lock	16	10	2
3217-9	Nut - Hex.	10	27	2	3296-4	Nut - Lock	15	11	1
3217-25	Nut - Hex.	6	33	2	3296-4	Nut - Lock	4	20	2
3218-5	Nut - Jam	14	12	2	3296-8	Nut - Lock	18	33	1
3218-13	Nut - Jam	6	22	2	3296-9	Nut - Lock	15	1	2
3219-3	Nut - Hex.	6	14	1	3296-12	Nut - Lock	6	16	2
3219-14	Nut - Hex.	6	24	4	3296-16	Nut - Lock	16	38	2
3220-2	Nut - Hex.	16	23	1	3296-23	Nut - Lock	4	43	2
3220-2	Nut - Hex. Jam	22	18	2	3296-29	Nut - Hex.	9	5	7
3234-1	Screw - HHF	22	29	4	3296-29	Nut - Lock	25	4	8
3234-4	Screw - HH	16	3	2	3296-29	Nut - Lock	8	6	4
3234-5	Screw - Hex. Hd.	8	7	4	3296-29	Nut - Lock	14	7	1
3234-33	Screw - HFH	1	14	3	3296-29	Nut - Lock	15	7	2
3234-33	Screw - HH	6	1	4	3296-29	Nut - Lock	1	12	6
3241-5	Screw - Set, Square Hd.	10	20	4	3296-29	Nut - Lock	10	16	4
3250-36	Screw - PPH	23	6	4	3296-29	Nut - Lock	23	17	2
3250-36	Screw - PPH	24	17	4	3296-29	Nut - Lock	16	27	2
3253-3	Washer - Lock	24	7	2	3296-29	Nut - Lock	4	35	4
3253-4	Washer - Lock	6	23	2	3296-39	Nut - Lock	23	5	3
3253-5	Washer - Lock	10	3	6	3296-39	Nut - Lock	4	12	3
3253-7	Washer - Lock	22	7	8	3296-39	Nut - Lock	14	14	1
3253-7	Washer - Lock	10	28	2	3296-39	Nut - Lock	24	15	3
3253-17	Washer - Lock	6	25	2	3296-39	Nut - Lock	15	23	1
3254-5	Washer - Lock ITLW	6	27	1	3296-42	Nut - Lock	16	11	4
3254-6	Washer - Lock ITLW	6	13	1	3296-42	Nut - Lock	8	14	3
3255-7	Washer - Lock, Int. Tooth	9	24	3	3296-42	Nut - Lock	23	19	1
3255-8	Washer - Lock, Ext. Tooth	9	11	1	3296-42	Nut - Lock	22	21	8
3255-20	Washer - Lock ITLW	6	32	2	3296-59	Nut - Lock	22	27	4
3256-1	Washer - Flat	9	10	4	32103-12	Nut - Wing	23	10	2
3256-3	Washer - Flat	8	4	4	32104-42	Screw - Self Tapping	6	20	2
3256-22	Washer - Flat	23	11	2	32104-76	Screw - Self Tapping	16	16	1
3256-23	Washer - Flat	14	2	1	32105-2	Screw - HH	6	4	2
3256-23	Washer - Flat	9	3	6	32105-21	Screw - Machine	15	6	2
3256-23	Washer - Flat	1	10	4	32120-11	Ring - Retaining	11	46	1
3256-23	Washer - Flat	10	17	4	32120-47	Ring - Retaining	22	22	2
3256-23	Washer - Flat	16	26	1	32121-6	Pin - Roll	22	23	3
3256-24	Washer - Flat	24	9	3	32121-15	Pin - Spiral	4	32	2
3256-24	Washer - Flat	14	13	2	32121-73	Pin - Spring	16	19	1
3256-24	Washer - Flat	23	14	3	32121-91	Pin - Spring	12	49	4
3256-24	Washer - Flat	22	28	4	32121-111	Pin - Spiral	4	2	1
3256-25	Washer - Flat	14	9	1	32121-112	Pin - Spiral	4	8	1
3256-26	Washer - Flat	18	20	4	32136-9	Nut - Slotted	4	31	1
3256-70	Washer - Flat	25	2	16	32144-11	Screw - HFH.	6	3	2
3256-78	Washer - Flat	18	34	1	32144-14	Screw - HWHTF	18	3	2
3256-82	Washer - Flat	1	17	2	32151-46	Ring - Retaining	11	28	2
3257-32	Key - Woodruff	11	19	2	32152-10	Nut	21	3	1
3257-32	Key - Woodruff	10	26	1	33113-008	Screw	9	41	4
3257-42	Key - Woodruff	19	17	1	33113-012	Screw - HH	9	23	3
3257-42	Key - Woodruff	20	17	1	353-212	Fitting - Hydraulic 45°	16	13	1
3257-42	Key - Woodruff	5	17	1	353-212	Fitting - Hydraulic 45°	18	15	1
3257-42	Key - Woodruff	18	38	2	353-371	Fitting - Hydraulic 90°	1	5	2
3269-8	Rivet - Pop	1	30	6	353-374	Fitting - Hydraulic 90°	10	13	1
3269-32	Rivet - Pop	9	9	2	353-379	Fitting - Hydraulic 45°	24	5	1
3272-6	Pin - Cotter	22	19	3	353-383	Fitting - Hydraulic, Straight	24	13	1
3272-6	Pin - Cotter	16	25	1	353-426	Fitting - Hydraulic 90°	18	11	4
3272-10	Pin - Cotter	22	20	2	353-427	Fitting - Hydraulic 45°	4	41	2
3272-16	Pin - Cotter	14	8	1	353-431	Fitting - Hydraulic 45°	18	14	
3272-23	Pin - Cotter	18	6	4	353-511	Fitting - Hydraulic 90°	16	4	1
3272-37	Pin - Cotter	4	30	1	353-511	Fitting - Hydraulic 90°	10	12	1
3274-55	Screw - HSBH	25	3	8	353-877	Fitting - Swivel Run Tee	16	12	1
3274-69	Screw - HSBH	23	21	1	353-987	Fitting - Hydraulic 90°	24	11	1
3274-93	Screw - HSH	4	44	2	353-988	Plug	11	22	1
3290-360	Screw - HH	16	7	2	353-990	Plug	19	24	2
3290-378	Tie - Cable	10	33	1	354-132	Fitting - Hydraulic 90°	18	5	1

*Not Illustrated

PRODUCT CHANGES

In an effort to make improvements available to TORO owners as quickly as possible, minor changes are incorporated into Toro's products from time to time that do not become immediately shown in the Parts Catalog. If such a change has been made in your unit, which is not reflected in your manual, see your TORO Distributor or his Authorized TORO Service Dealer for information and part numbers.

IDENTIFICATION AND ORDERING

MODEL AND SERIAL NUMBERS

The Sand Pro 3020 has two identification numbers; a model number and a serial number. The two numbers are stamped on a plate located on the left fender. In any correspondence concerning the Sand Pro 3020, supply model and serial numbers to assure that correct information and replacement parts are obtained.

To order replacement parts from an Authorized TORO Service Dealer, supply the following information:

1. Model and serial number of the Sand Pro 3020.
2. Part number, description, and the quantity of part(s) desired.

NOTE: Do not order by reference number if a parts catalog is being used; use the PART NUMBER.

TABLE OF CONTENTS

Description	Page	Description	Page
Shrouding & Oil Cooler Assembly	1–2	Hydraulic Lift Valve Assembly No. 43–1710	17
Air Cleaner Assembly No. 95–5805	3	Rear Wheel Drive Assembly	18
Front Wheel & Steering Assembly	4	Hydraulic Drive Motor Right Rear	
Hydraulic Drive Motor Front No. 75–9830	5	Right Rear No. 75–9840	19
Dash Panel Assembly	6	Hydraulic Drive Motor Left Rear	
Electrical Schematic	7	Left Rear No. 75–9831	20
Seat Assembly	8	Hydraulic Cylinder Assembly No. 83–7000	21
Engine Installation Assembly	9	Rear Wheel Brake Assembly	22
Hydraulic Pump Installation Assembly	10	Fuel Tank Assembly	23
Hydraulic Pump Assembly No. 95–0587	11–12	Hydraulic Oil Reservoir & Filter Assembly	24
Hydraulic Schematic	13	Fender Assembly – Europe	25
Traction Pedal Assembly	14	Engine – Briggs & Stratton	
Pump Control Lever Assembly	15	Model 303447–0480–01	26–36
Lift Valve Installation Assembly	16	TORO Part Number Index	37–40

