



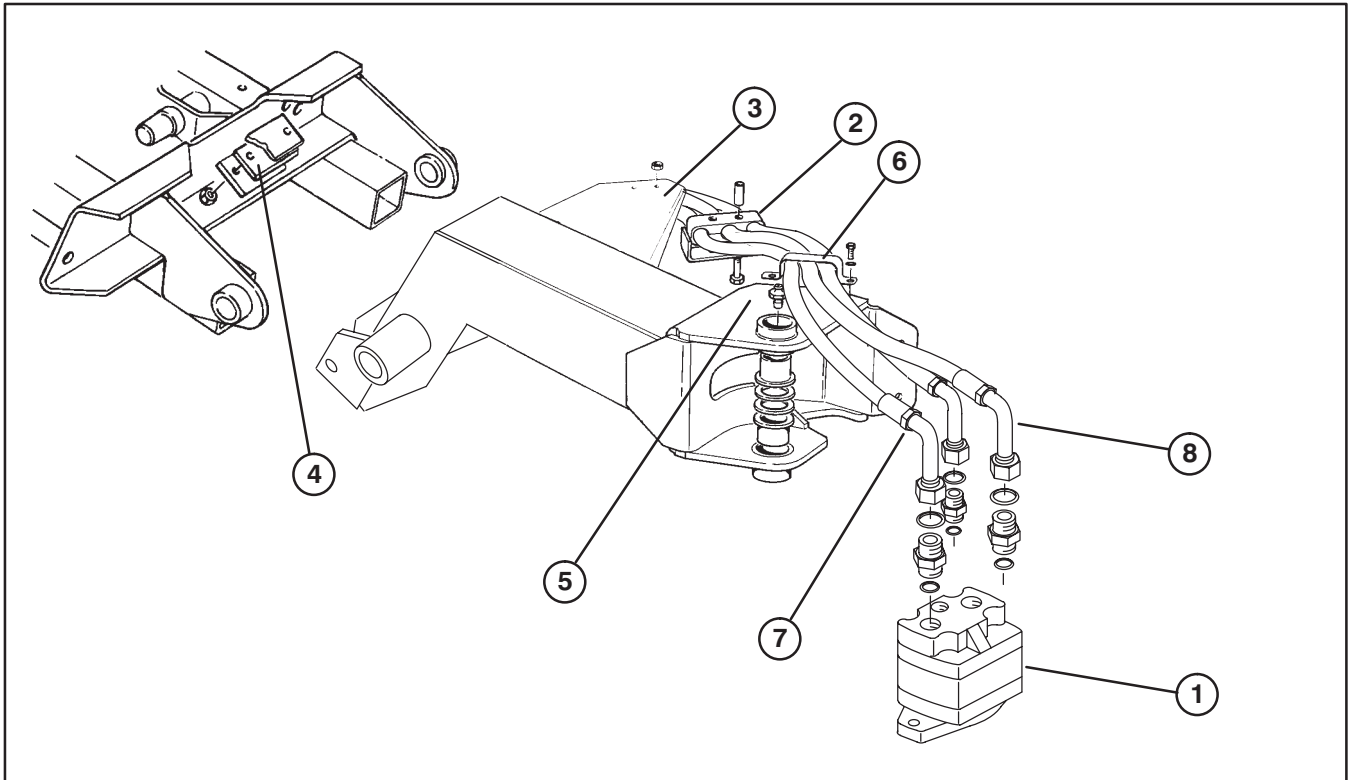
PART NO. 93-9956

**INSTALLATION
INSTRUCTIONS**

HOSE ROUTING KIT

For Groundsmaster® 580D

1. Position machine on a level surface, lower cutting units completely to the ground and stop engine. Remove key from ignition switch.
2. Disconnect hoses (3 ea.) to wing deck cutting unit motors.
3. Disconnect hoses from fittings on wing deck cutting unit motors.
4. Remove (2) capscrews and locknuts securing hydraulic line clamps to under side of each lift arm assembly.

**Figure 1**

- | | | |
|-------------------------|-------------------|--------------------------|
| 1. Cutting unit motor | 4. Spacer | 7. Hose (5/8" x 77" lg.) |
| 2. Hydraulic line clamp | 5. Outer lift arm | 8. Hose (5/8" x 74" lg.) |
| 3. Lift arm assembly | 6. Hose clamp | |

5. Remove and discard hoses but retain clamp components and fasteners.

6. Remove (2) capscrews and locknuts securing rubber stop cushions to wing deck carrier frames.

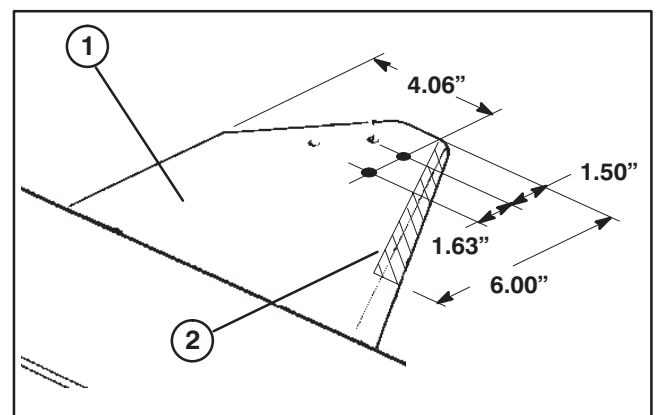
7. Insert a new spacer in between rubber stop cushions and reinstall all to wing deck carrier frames with (2) capscrews and locknuts removed.

8. Using dimensions shown in figure 2, locate, mark and drill (2) .312" dia. holes in right lift arm assembly. Also, using dimensions in figure 2, trim vertical edge from lift arm assembly.

9. Repeat step 8 on left lift arm assembly.

10. Using template "A" locate, mark, drill and tap (2) 5/16-18 dia. holes in top plate of right outer lift arm.

11. Repeat step 10 on right outer lift arm, using template "B".

**Figure 2**

1. Lift arm
2. Trim this area

12. Loosely connect new hoses to cutting unit motors as follows:

A. 5/8" I.D. x 77"lg. hose to front fitting of cutting unit.

B. 5/8" I.D. x 74"lg. hose to middle fitting of cutting unit.

C. 3/8" I.D. x 74"lg. hose to rear fitting of cutting unit.

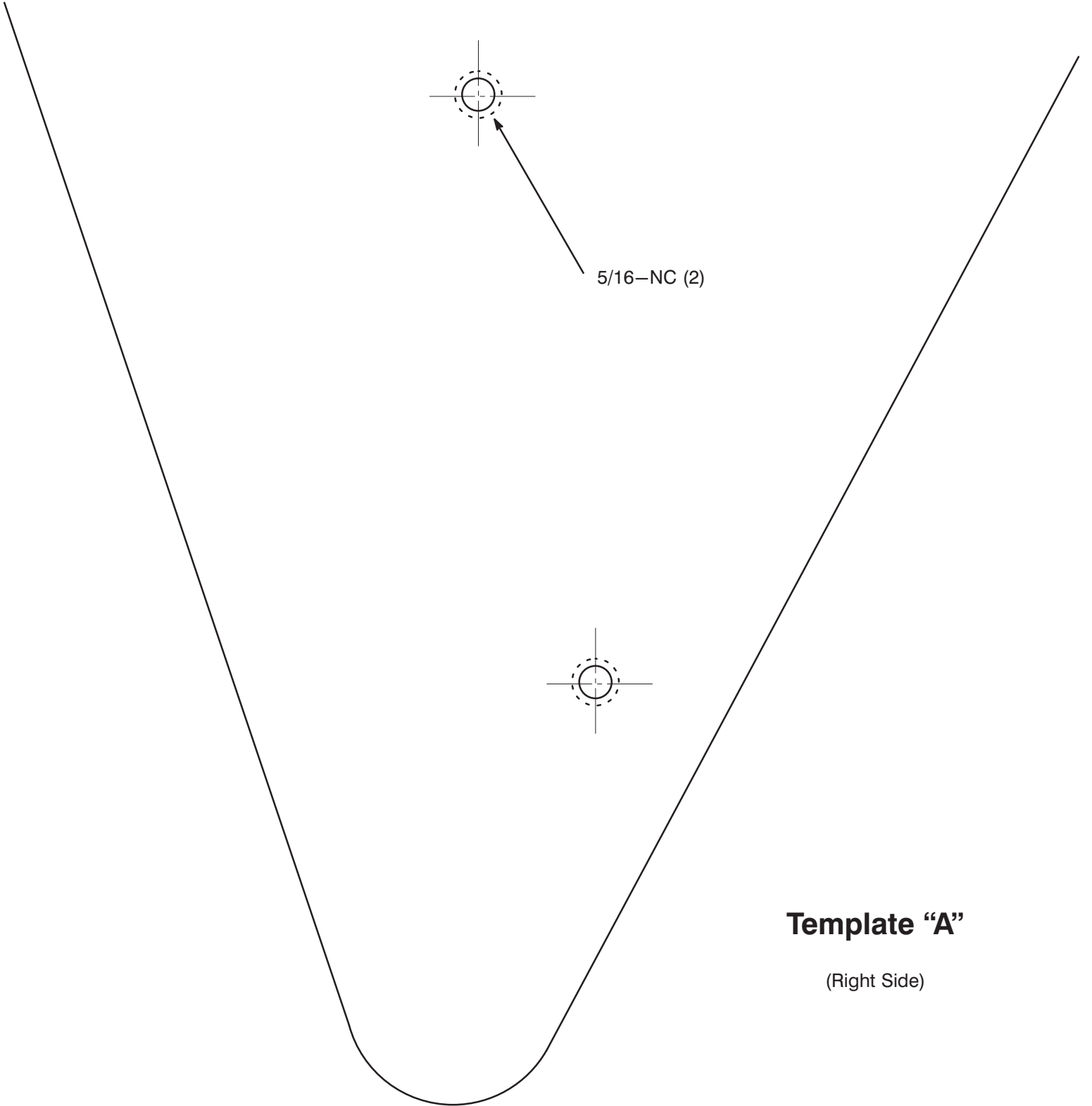
13. Using new holes in each lift arm, loosely secure hoses to under side of lift arm with a hydraulic line clamp and (2) capscrews and locknuts. **Hydraulic line clamp to be positioned on hoses between hose covers.**

14. Using new tapped holes in each outer lift arm, loosely secure hoses to top of outer lift arm with a hose clamp, (2) 5/16–18 x 3/4" capscrews and lockwashers.

15. Connect hoses to traction unit.

16. Tighten all hoses and clamps.

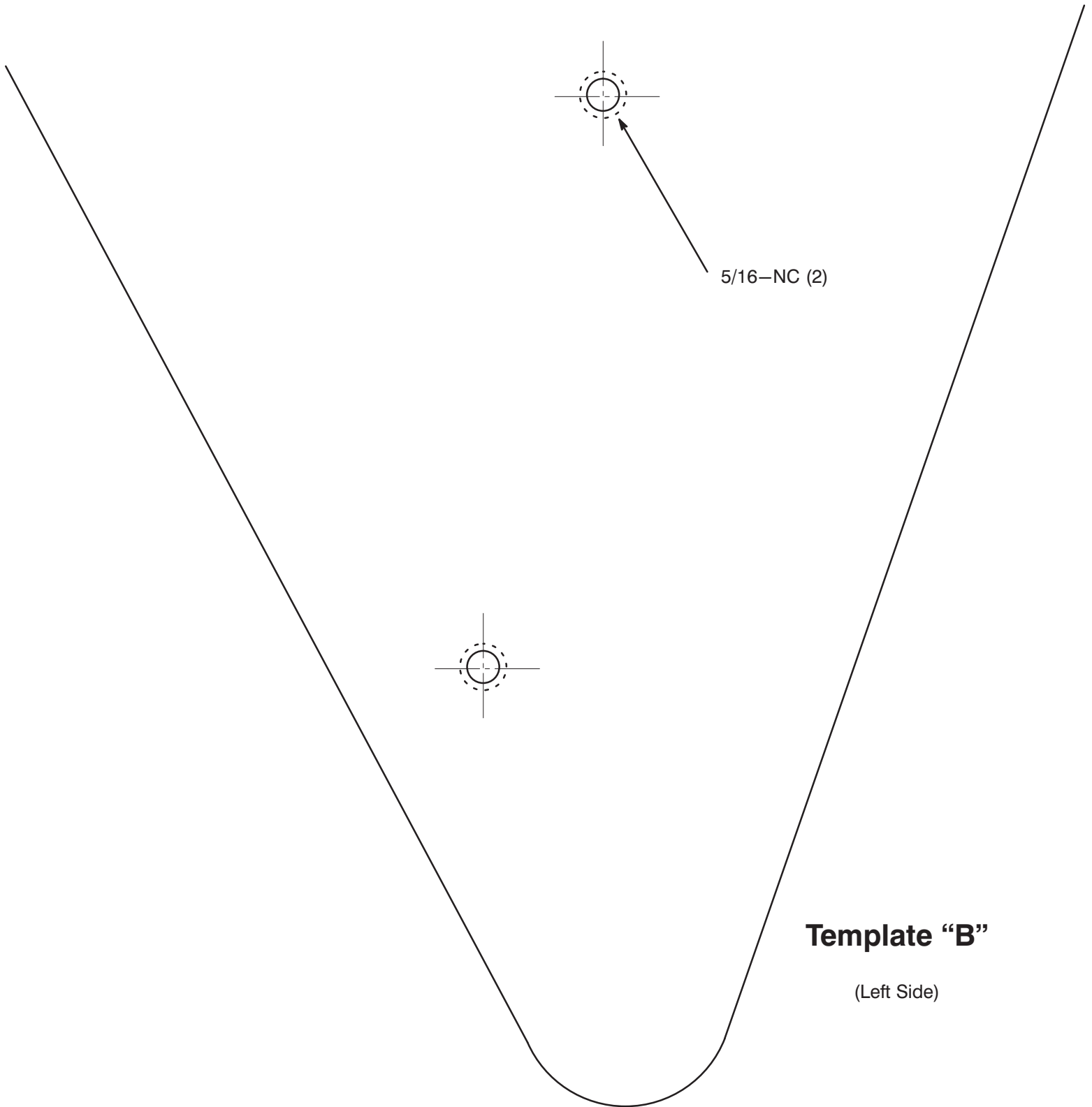
Note: Start engine and operate decks. If blades rotate counterclockwise, stop machine and reverse the position of the pressure and return hoses at the traction unit.



5/16-NC (2)

Template "A"

(Right Side)



5/16-NC (2)

Template "B"

(Left Side)