



18in Extended Rear Roller Kit

Greensmaster® Flex™ 18/1800 or eFlex® 18/1800 DPA Cutting Units

Model No. 125-3537

Installation Instructions

Important: When rebuilding the roller, Toro recommends installing the Roller Seal Replacement Kit, part number 107-1594, which includes the bearings, seals, and locating spacers needed for assembly.

Loose Parts

Use the chart below to verify that all parts have been shipped.

Description	Qty.	Use
18 inch, rear extended roller	1	Install the extended roller.
Spacer (7/8 inch)	1	

Installing the Extended Rear Roller

1. Remove the old roller from the cutting unit.
 2. Remove the nut, seal, and bearing from each end of the old roller.
- Note:** If you are installing a new Roller Seal Replacement Kit, discard the old seal and bearing. Store the old roller tube for future use.
3. Install a new bearing, the black washer, and the nut removed in step 2 onto each end of the roller (Figure 1).

Note: Make sure that the seating and sealing surface of each nut is not damaged. If the nut is damaged, replace it with Toro part number 108-3151.

4. Tighten the nuts until the bearings are seated on each end of the roller (Figure 1).

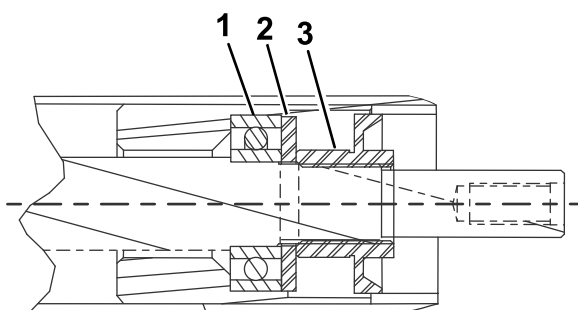


Figure 1

1. Bearing
2. Washer (black)
3. Nut

6. Apply a coating of #2 grease to the nut surface as shown in Figure 2.
- Important:** If you fail to grease the nut, you may damage the seal during installation.
- Note:** Make sure not to scratch the surface of the nut where the seal will be running.
7. Install the seal onto the nut and position it as shown in Figure 2.
 8. Pack the back of the seal 75 to 90% full with #2 grease.
 9. Install a nut with a seal onto each end of the roller (Figure 2).

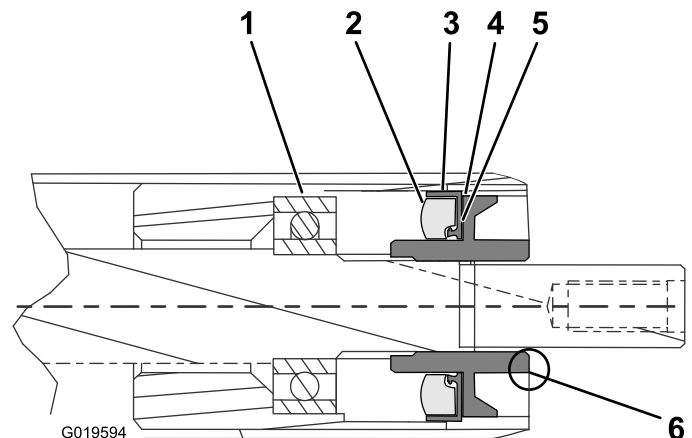


Figure 2

1. Bearing
2. #2 Grease
3. Seal
4. Nut
5. Grease this surface
6. Flush with the end of the roller

5. Remove the nut and black washer from each end of roller (Figure 1).

10. Tighten each nut until it is flush as shown in Figure 2.
11. Remove the nuts from the end of the roller and insert the 12.7 mm (1/2 inch) spacers (Figure 3).



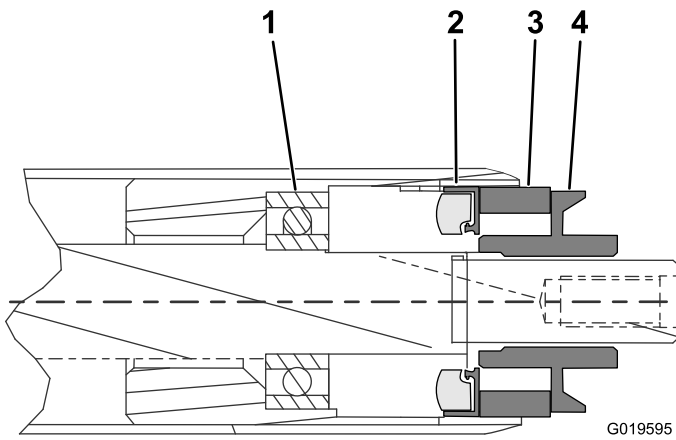


Figure 3

- | | |
|------------|------------------------------|
| 1. Bearing | 3. 12.7 mm (1/2 inch) spacer |
| 2. Seal | 4. Nut |

12. Install the nuts onto the ends of the roller. Tighten the nuts until they are flush with the end of the roller tube (Figure 4).

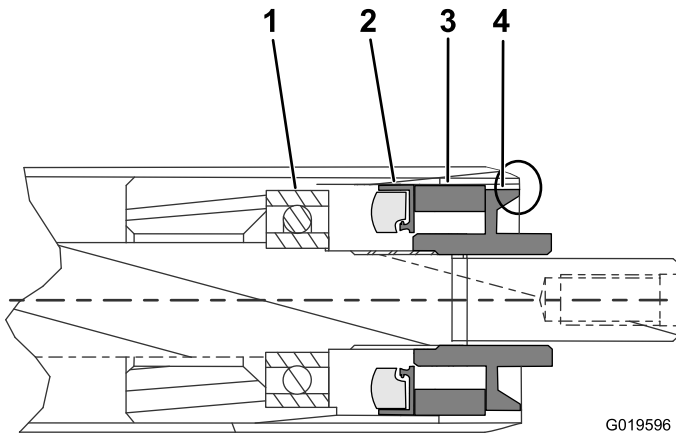


Figure 4

- | | |
|------------|--|
| 1. Bearing | 3. 12.7 mm (1/2 inch) spacer |
| 2. Seal | 4. Nut (flush with the end of the roller tube) |

13. Remove the nuts and the 12.7 mm (1/2 inch) spacers.
 14. Install the 22.2 mm (7/8 inch) spacer and yellow washer onto one end of the roller (Figure 5).

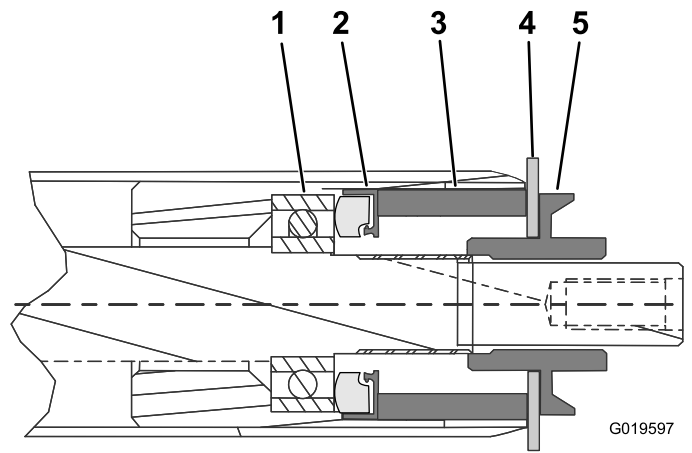


Figure 5

- | | |
|------------------------------|--------------------|
| 1. Bearing | 4. Washer (yellow) |
| 2. Seal | 5. Nut |
| 3. 22.2 mm (7/8 inch) spacer | |

15. Tighten the nut until the yellow washer bottoms out against the roller housing (Figure 5).
 16. Remove the washer and spacer from the end of the roller.
 17. Repeat steps 14 through 16 for the other side.
 18. Insert a V-ring onto each nut as shown in Figure 6.

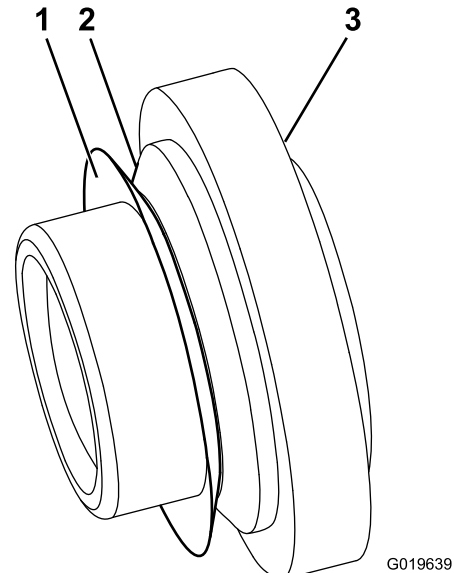


Figure 6

- | | |
|--------------------|--------|
| 1. Grease this lip | 3. Nut |
| 2. V-ring | |

19. Lubricate the seal lip with #2 grease as shown in Figure 6.

Note: If you are using the old nuts, apply Loctite® Threadlocker 242® to the threads of the nuts.

20. Install a nut with a V-ring onto each end of the roller (Figure 7).

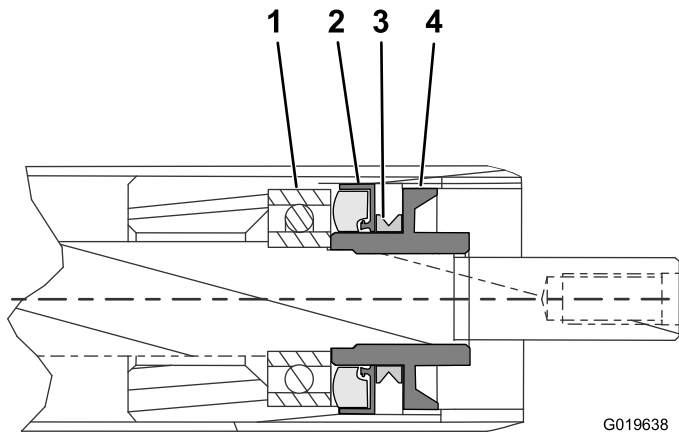


Figure 7

- | | |
|------------|-----------|
| 1. Bearing | 3. V-ring |
| 2. Seal | 4. Nut |

21. Torque the nuts to 34 to 41 N-m (25 to 30 ft-lb).



Count on it.