



Count on it.

Parts Catalog

Commercial 21in Lawn Mower

Model No. 22156—Serial No. 313000001 and Up



Ordering Replacement Parts

To order replacement parts, please supply the part number, the quantity, and the description of each part desired.

Understanding Reference Numbers

Each identified part in an illustration has a reference number. The reference number for a part also appears in the parts list, along with other information about the part.

This catalog uses two special reference number formats, one to indicate parts in a service assembly and another to indicate the quantity of a given part in an illustration.

Service Assembly Reference Numbers

Parts in service assemblies have reference numbers in the form a:b. The a represents the reference number of the entire service assembly and the b represents a sequential number unique to each part within the service assembly.

For example, a wheel assembly might be identified by reference number 6, the tire by 6:1, the valve by 6:2, and the wheel by 6:3. When you order the assembly identified by reference number 6, you receive all parts identified by reference numbers 6:1, 6:2, and 6:3. However, you may also order any part individually. Reference numbers of this type appear in illustration and in parts lists.

Reference Numbers Indicating Quantity

In an illustration, if a reference number indicates more than one part, the reference number has the form nX y. The n represents the quantity of the part, the X is the multiplication symbol, and the y represents the reference number.

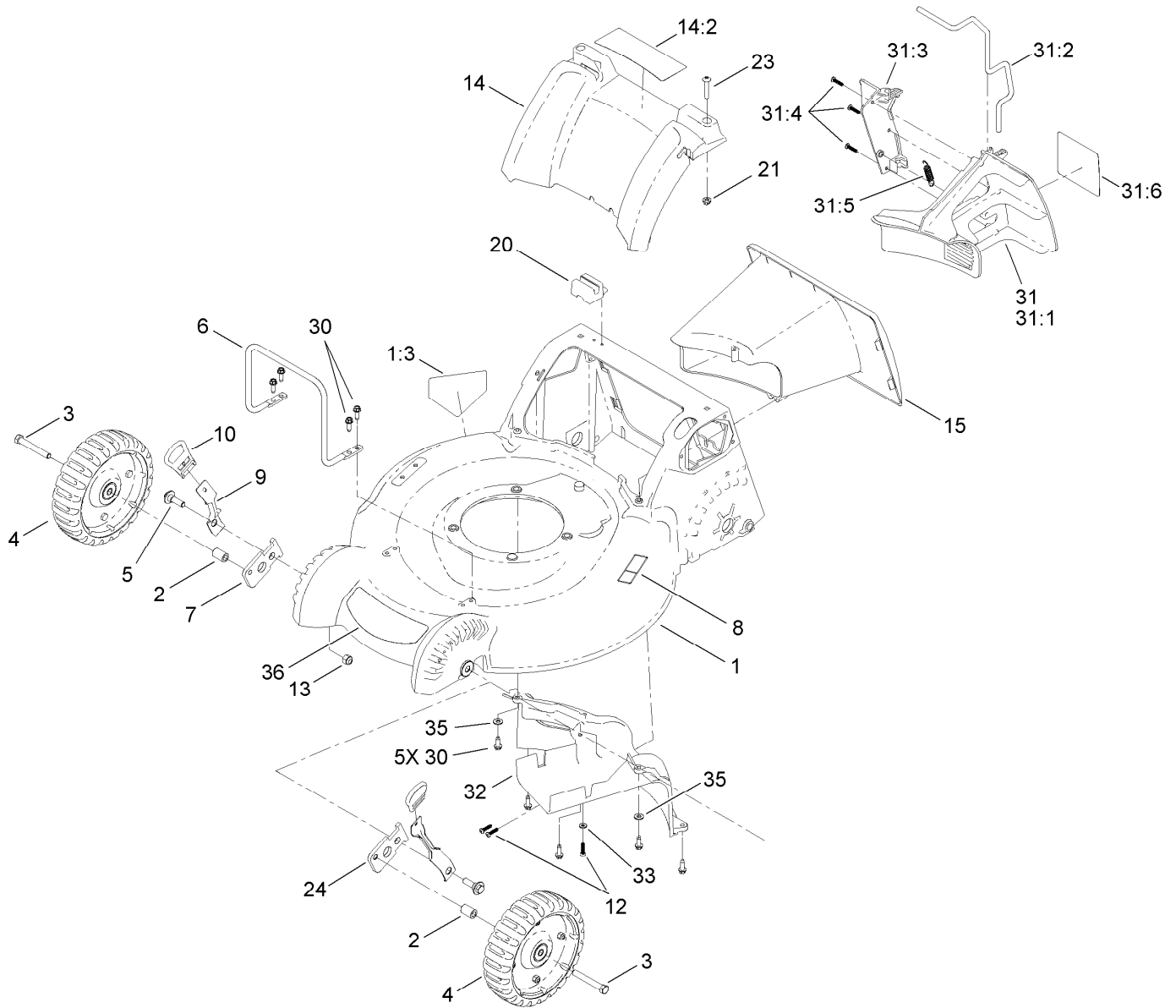
For example, in an illustration, the reference number 2X 37 means that two of the parts identified by reference number 37 are indicated.

List of Abbreviations

AR: as required	HLH: hex lag head	PTO: power-take-off
ASM: assembly	HOC: height-of-cut	RH: right hand
BBC: blade brake control	HSBH: hex socket button head	ROPS: roll-over protection system
BHTF: button head thread forming	HSFH: hex socket flat head	RRB: rear roller brush
CARR: carriage	HSH: hex socket head	SFH: slotted fillister head
CCW: counter clockwise	HWH: hex washer head	SHH: slotted hex head
CW: clockwise	HWHTF: hex washer head thread forming	SHWH: slotted hex washer head
DEG: degrees	HYD: hydraulic	SPH: slotted pan head
DPA: Dual Point Adjustment	LH: left hand	SQH: square head
ECM: electronic control module	LP: Liquefied Petroleum Gas	SRH: slotted round head
EXT: external	LPG: Liquefied Petroleum Gas	STD: standard
FH: flat head	NI: nylon insert	TAP: self tapping
GA: gauge	NPTF: national pipe thread fine	TTH: torx truss head
HD: heavy-duty	PFH: phillips flat head	
HF: hex flange	PPH: phillips pan head	
HH: hex head	PPHTF: phillips pan head thread forming	
HHF: hex head flange	PRH: phillips round head	
HHFTF: hex head flange thread forming	PTH: phillips truss head	
HJ: hex jam		

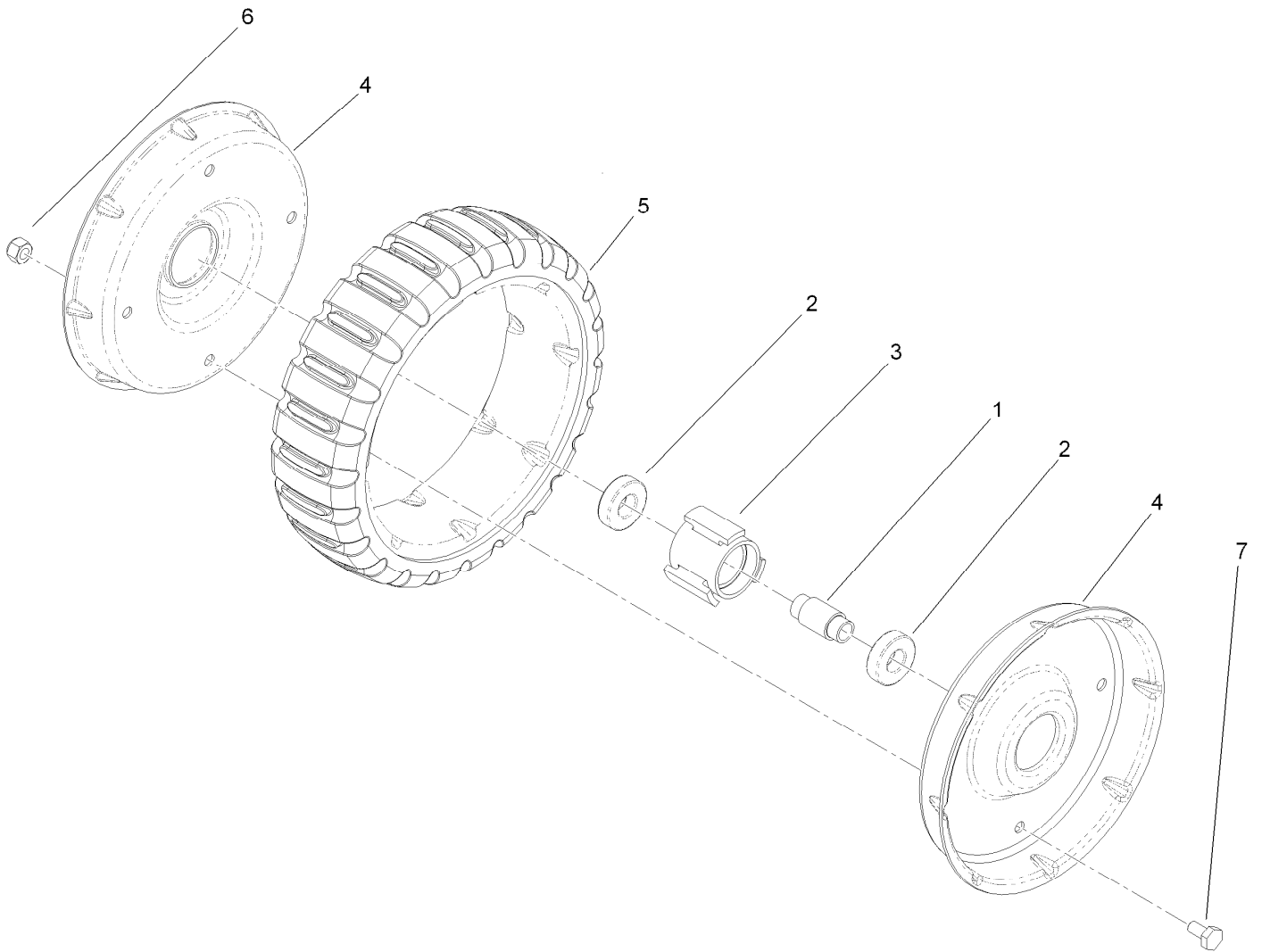
Contents

Housing, Front End and Tunnel Assembly	4
Wheel Assembly No. 117-5252	5
Transmission, Side Discharge, Rear Wheel and Height-of-Cut Assembly	6
Rear Wheel Assembly No. 117-5253	7
Engine and Blade Assembly	8
Handle Assembly	9
Rear Bag Assembly	10



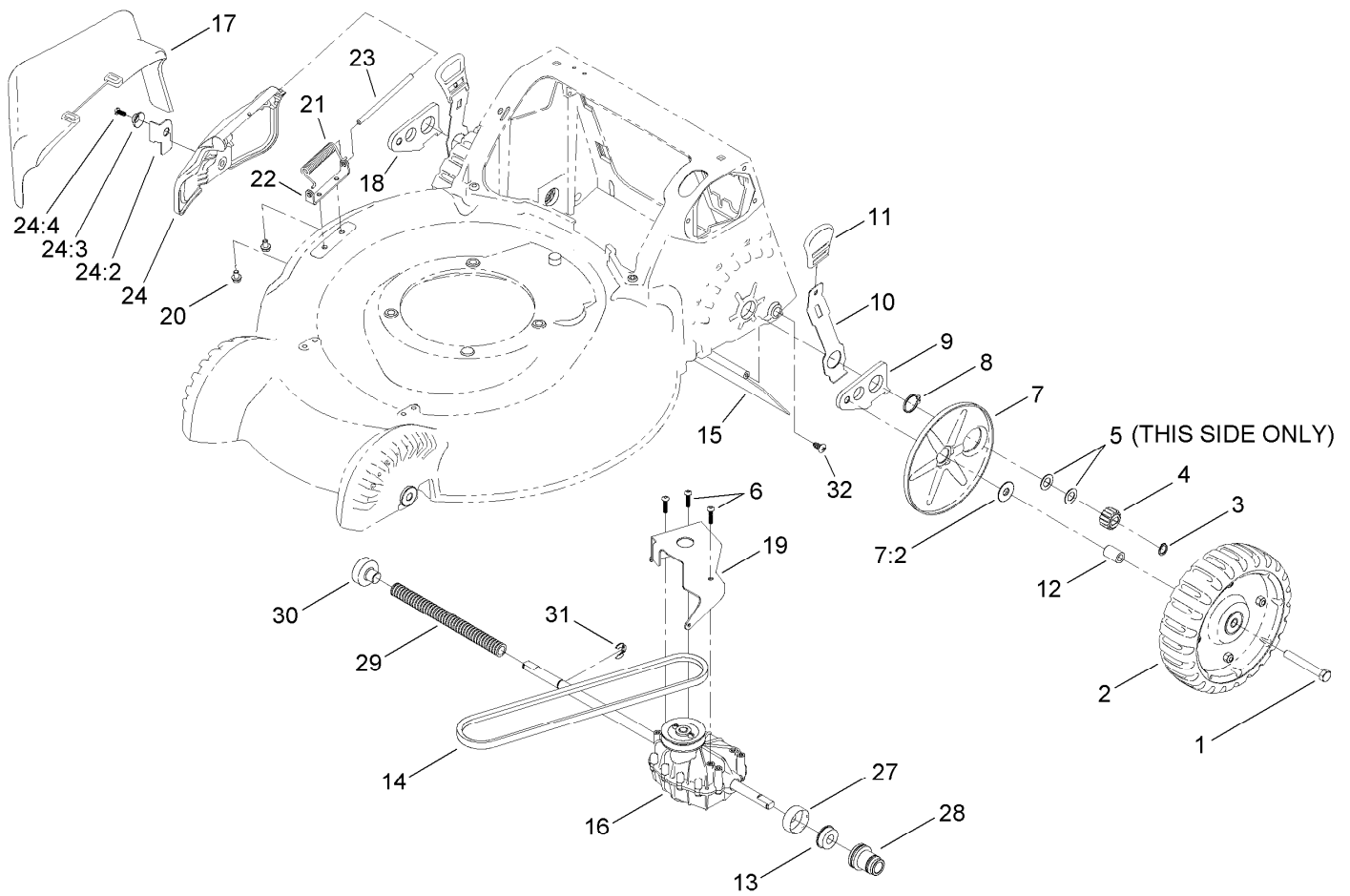
Housing, Front End and Tunnel Assembly

Ref.	Part Number	Qty.	Description	Ref.	Part Number	Qty.	Description
1	117-5266	1	Housing ASM	20	110-1786	1	Module-Switch
1:3	94-8072	1	Decal-Danger	21	94-1610	2	Nut-Clip
2	114-2754	2	Spacer	23	108-0965	2	Screw-PTH
3	323-13	2	Screw-HH	24	110-9420	1	Arm-Pivot, LH
4	117-5252	2	8-Inch Wheel ASM	30	49-2040	9	Screw-HWHTF
5	614672	2	Bolt-Shoulder	31	110-9468	1	Mulch Plug ASM
6	110-9475-03	1	Guard-Engine	31:1	110-9446	1	Plug-Mulch, LH
7	110-9421	1	Arm-Pivot, RH	31:2	110-9448	1	Latch-Plug, Mulch
8	121-1449	1	Decal-Warning, Block	31:3	110-9447	1	Plug-Mulch, RH
9	110-9434	2	Arm-Spring, Front	31:4	108-7476	3	Screw-Plastite
10	110-0549	2	Knob-HOC	31:5	110-9458	1	Spring-Extension
12	108-7476	6	Screw-Plastite	31:6	110-9457	1	Decal-Plug, Mulch
13	3296-39	2	Nut-Lock, NI	32	110-9413	1	Baffle-Rear
14	115-3177	1	Cover-Rear	33	3256-14	1	Washer-Flat
14:2	114-2820	1	Decal-Warning	35	3256-22	2	Washer-Flat
15	110-9455	1	Tunnel	36	117-5247	1	Decal-Housing, Front



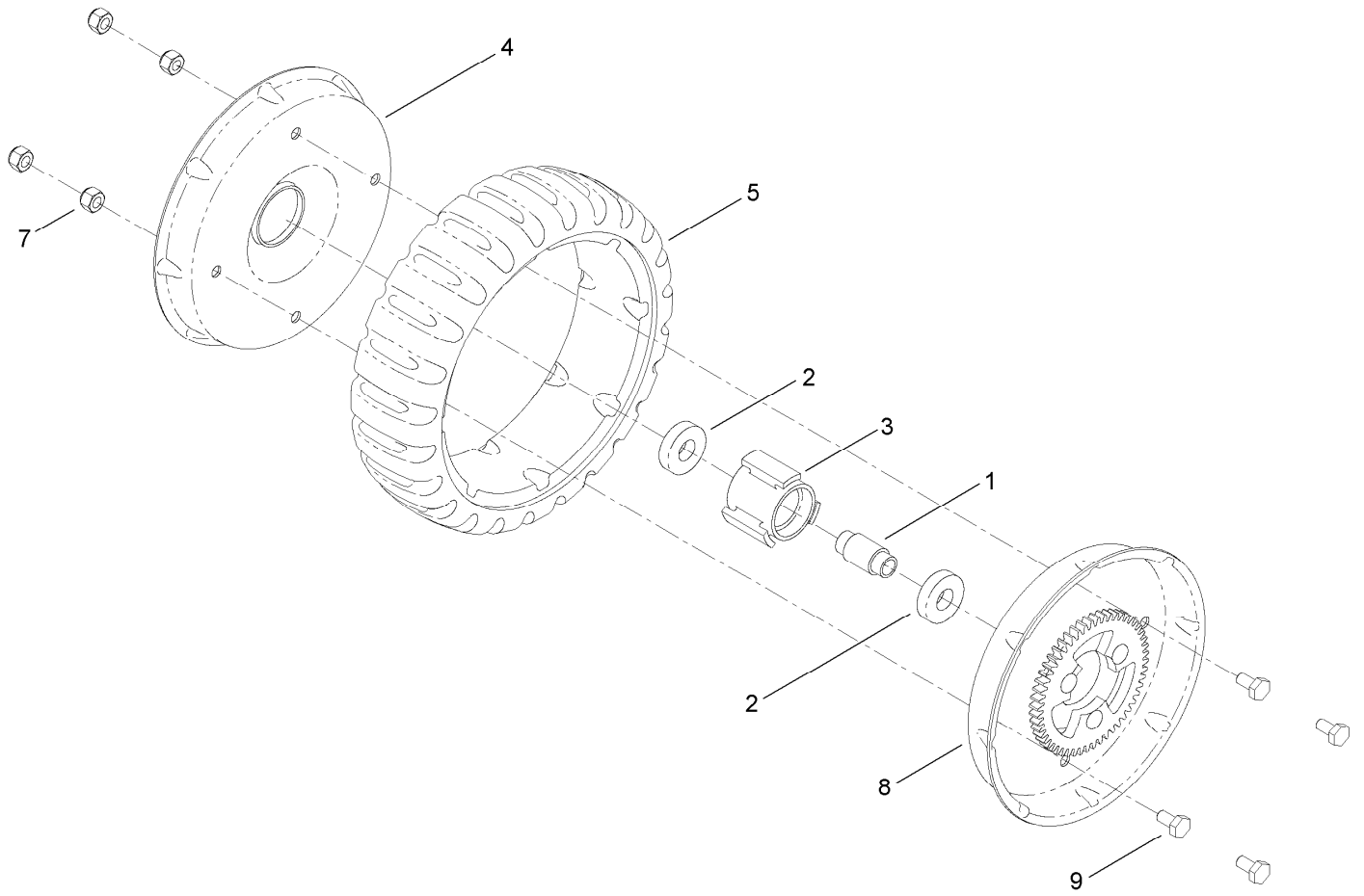
Wheel Assembly No. 117-5252

<i>Ref.</i>	<i>Part Number</i>	<i>Qty.</i>	<i>Description</i>
1	52-2440	1	Spacer-Bearing
2	109-8020	2	Bearing-Ball
3	52-2410	1	Hub-Bearing
4	117-5250	2	Wheel-Half
5	110-9499	1	Tire-8 Inch
6	3296-42	4	Nut-Lock, NI
7	321-2	4	Screw-HH



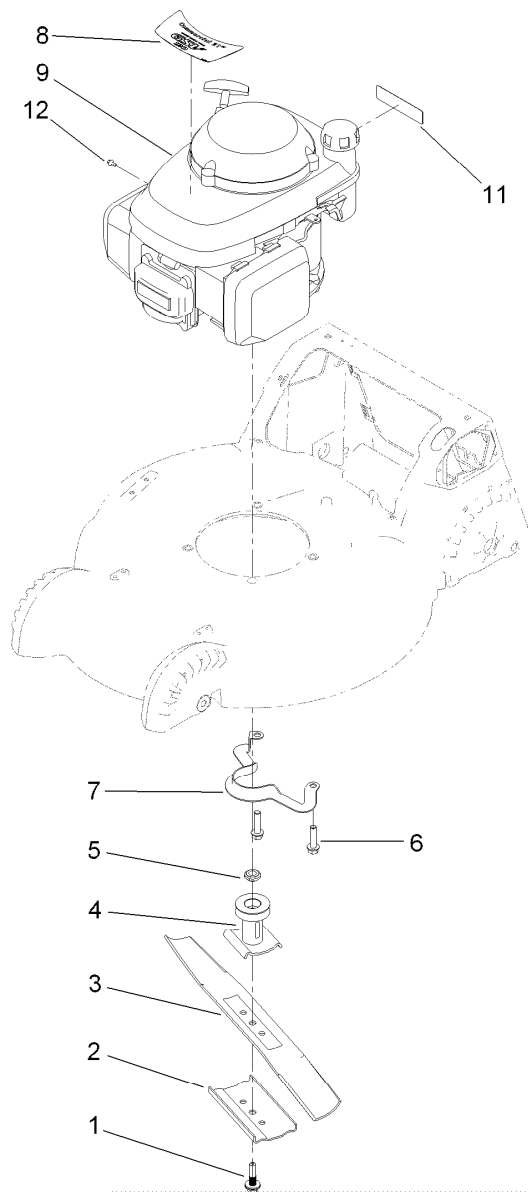
Transmission, Side Discharge, Rear Wheel and Height-of-Cut Assembly

<i>Ref.</i>	<i>Part Number</i>	<i>Qty.</i>	<i>Description</i>	<i>Ref.</i>	<i>Part Number</i>	<i>Qty.</i>	<i>Description</i>
1	323-13	2	Screw-HH	17	105-3028	1	Chute-Discharge, Side
2	117-5253	2	8-Inch Wheel ASM	18	108-9343	1	Arm-Rear Pivot, RH
3	32151-61	2	Ring-Retaining	19	114-7977-03	1	Bracket-Transmission
4	110-9417	2	Gear-Pinion, 15T	20	99-8445	2	Screw-HWH, Taptite
5	36-4780	2	Washer-Plain	21	99-5293	1	Spring-Torsion
6	108-7476	3	Screw-Plastite	22	112-6416	1	Bracket-Cover
7	110-1792	2	Wheel Cover ASM	23	99-5291	1	Rod-Cover
7:2	614426	1	Washer-Stepped	24	106-8376	1	Discharge Door ASM
8	32151-36	2	Ring-Retaining	24:2	107-0795	1	Latch-Door
9	108-9344	1	Arm-Rear Pivot, LH	24:3	107-7456	1	Cap-Door
10	110-9445	2	Arm-Spring, Rear	24:4	107-7461	1	Screw-Plastite
11	110-0549	2	Knob-HOC	27	117-5268	1	Cover-Bearing
12	114-2754	2	Spacer	28	110-9422	2	Retainer-Bearing
13	104-8699	2	Bearing-Ball	29	117-5260	1	Cover-Shaft, Drive
14	110-9429	1	V-Belt	30	114-2755	1	Cap-Bearing
15	120-7010	1	Shield-Trailing	31	65-2720	1	Ring-Clip, Locking
16	114-2819	1	Transmission	32	117-1092	2	Screw-PTH



Rear Wheel Assembly No. 117-5253

<i>Ref.</i>	<i>Part Number</i>	<i>Qty.</i>	<i>Description</i>
1	52-2440	1	Spacer-Bearing
2	109-8020	2	Bearing-Ball
3	52-2410	1	Hub-Bearing
4	117-5250	1	Wheel-Half
5	110-9499	1	Tire-8 Inch
7	3296-42	4	Nut-Lock, NI
8	117-5251	1	Hub Gear ASM
9	321-2	4	Screw-HH

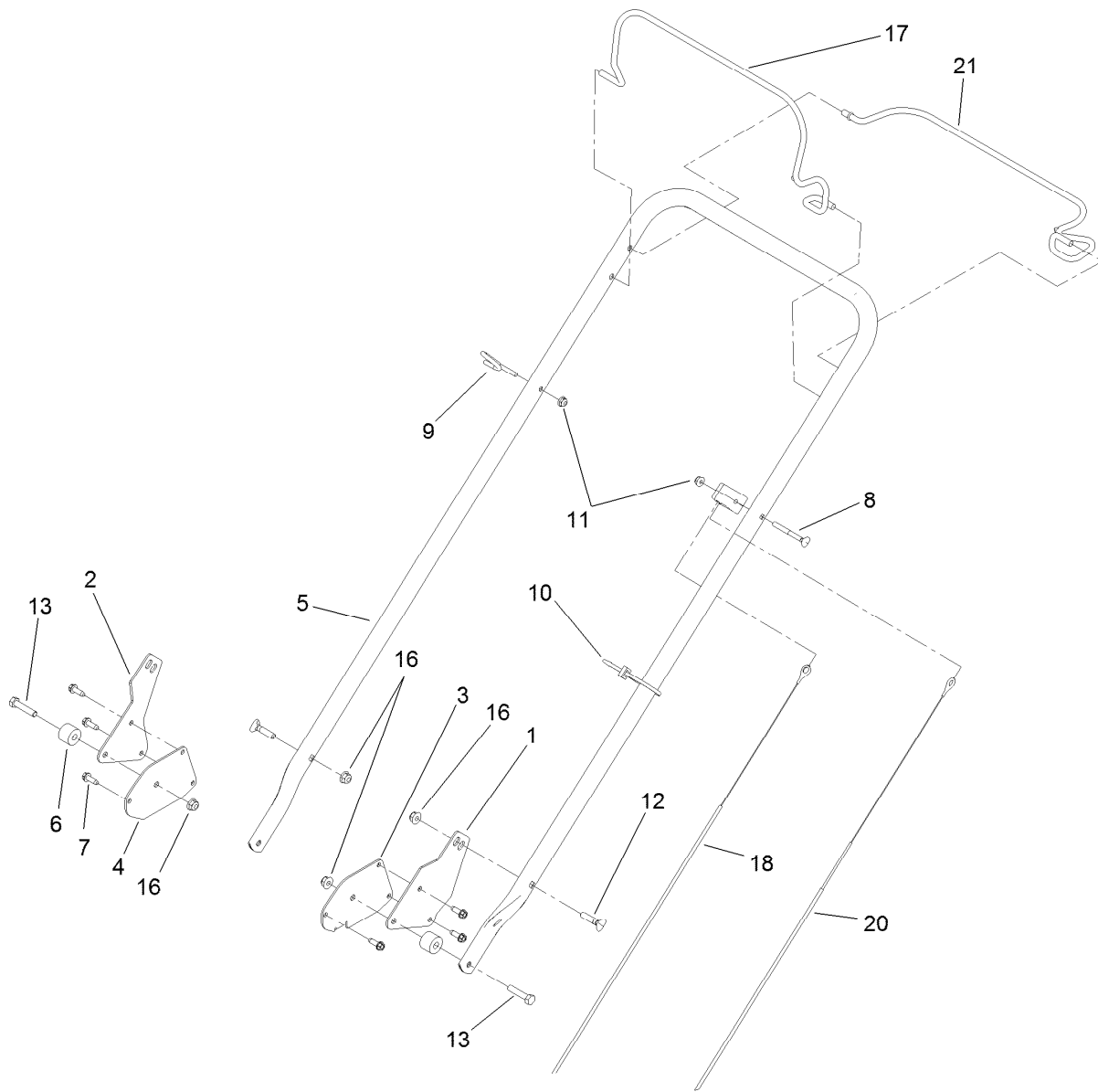


Engine and Blade Assembly

Ref.	Part Number	Qty.	Description
1	117-5270	1	Bolt-Blade
2	108-3766-03	1	Support-Blade
3	108-3759-03	1	Blade-Bagging
4	114-2774	1	Driver-Blade
5	106-3999	1	Spacer-Driver
6	32144-102	3	Screw-HWH
7	108-8110-03	1	Guide-Belt
8	117-5245	1	Decal-Engine
9		1	Engine-Honda, Gsv190 ●■
11	117-2718	1	Decal-Arrester, Spark
12	98-1394	1	Screw-HWH

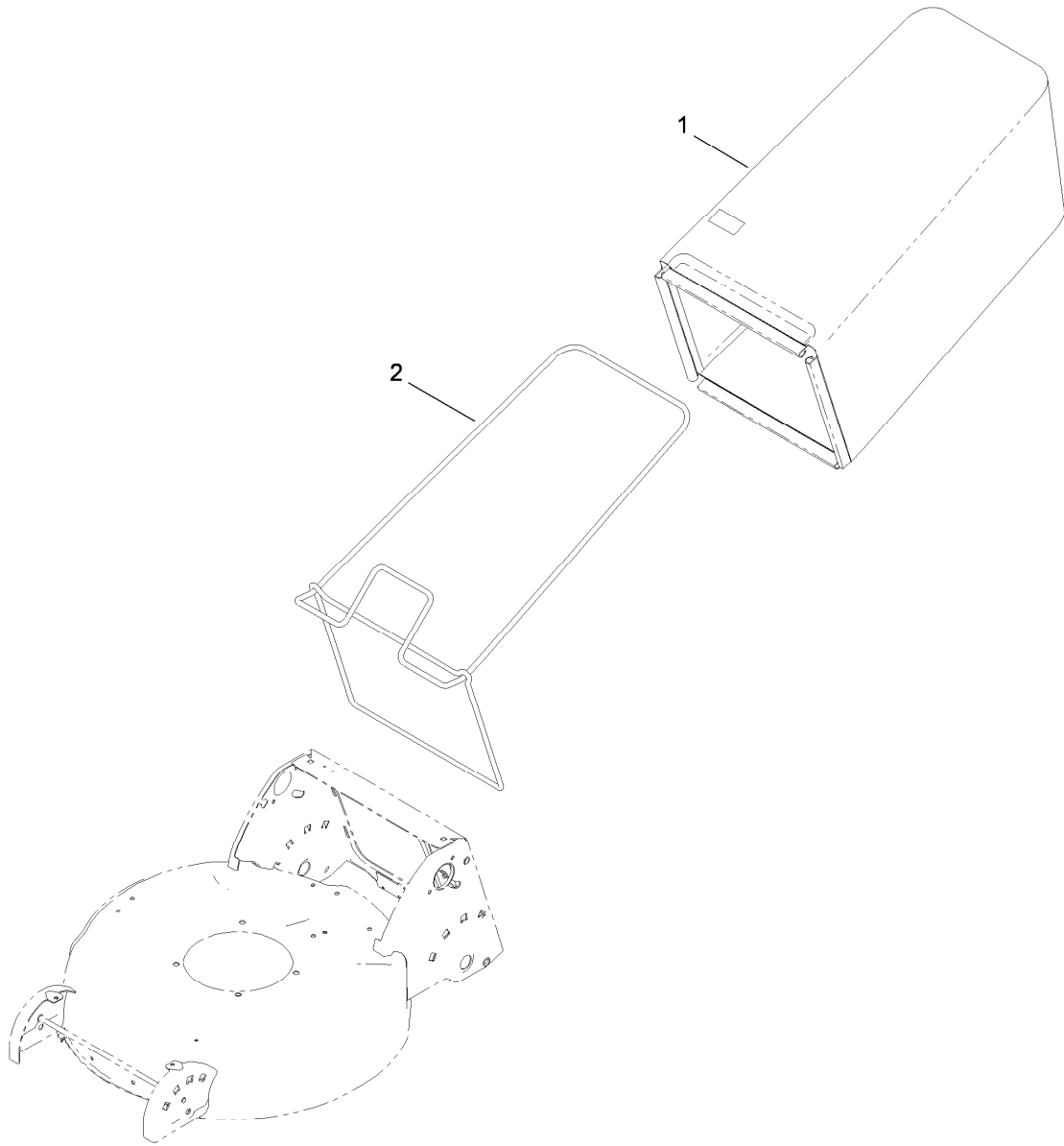
● Not serviced separately

■ Obtain parts from www.honda-engines.com



Handle Assembly

<i>Ref.</i>	<i>Part Number</i>	<i>Qty.</i>	<i>Description</i>	<i>Ref.</i>	<i>Part Number</i>	<i>Qty.</i>	<i>Description</i>
1	110-9494-03	1	Support-Strut, LH	10	3290-378	1	Tie-Cable
2	110-9495-03	1	Support-Strut, RH	11	104-7201	2	Nut-HF
3	114-2760-03	1	Plate-Handle, Traction	12	92-4095	2	Screw-Handle
4	110-9471-03	1	Plate-Handle	13	322-7	2	Screw-HH
5	119-2372-03	1	Handle	16	104-8300	4	Nut-Flange, NI
6	112-8797-03	2	Spacer	17	119-2388-03	1	Bail-Brake
7	49-2040	6	Screw-HWHTF	18	119-2352	1	Cable-Brake
8	92-2270	1	Screw-Handle	20	119-2353	1	Cable-Traction
9	114-2775	1	Guide-Rope	21	119-2387-03	1	Bail-Traction



Rear Bag Assembly

<i>Ref.</i>	<i>Part Number</i>	<i>Qty.</i>	<i>Description</i>
1	117-4191	1	Grass Bag ASM
2	112-8750-03	1	Frame-Bag

Notes:



Count on it.