



Count on it.

Parts Catalog

21in Heavy-Duty

Recycler[®]/Rear Bagger Lawn Mower

Model No. 22198—Serial No. 313000001 and Up



Ordering Replacement Parts

To order replacement parts, please supply the part number, the quantity, and the description of each part desired.

Understanding Reference Numbers

Each identified part in an illustration has a reference number. The reference number for a part also appears in the parts list, along with other information about the part.

This catalog uses two special reference number formats, one to indicate parts in a service assembly and another to indicate the quantity of a given part in an illustration.

Service Assembly Reference Numbers

Parts in service assemblies have reference numbers in the form a:b. The a represents the reference number of the entire service assembly and the b represents a sequential number unique to each part within the service assembly.

For example, a wheel assembly might be identified by reference number 6, the tire by 6:1, the valve by 6:2, and the wheel by 6:3. When you order the assembly identified by reference number 6, you receive all parts identified by reference numbers 6:1, 6:2, and 6:3. However, you may also order any part individually. Reference numbers of this type appear in illustration and in parts lists.

Reference Numbers Indicating Quantity

In an illustration, if a reference number indicates more than one part, the reference number has the form nX y. The n represents the quantity of the part, the X is the multiplication symbol, and the y represents the reference number.

For example, in an illustration, the reference number 2X 37 means that two of the parts identified by reference number 37 are indicated.

List of Abbreviations

AR: as required

ASM: assembly

BBC: blade brake control

BHTF: button head thread forming

CARR: carriage

CCW: counter clockwise

CW: clockwise

DEG: degrees

DPA: Dual Point Adjustment

ECM: electronic control module

EXT: external

FH: flat head

GA: gauge

HD: heavy-duty

HF: hex flange

HH: hex head

HHF: hex head flange

HHFTF: hex head flange thread forming

HJ: hex jam

HLH: hex lag head

HOC: height-of-cut

HSBH: hex socket button head

HSFH: hex socket flat head

HSH: hex socket head

HWH: hex washer head

HWHTF: hex washer head thread forming

HYD: hydraulic

LH: left hand

LP: Liquefied Petroleum Gas

LPG: Liquefied Petroleum Gas

NI: nylon insert

NPTF: national pipe thread fine

PFH: phillips flat head

PPH: phillips pan head

PPHTF: phillips pan head thread forming

PRH: phillips round head

PTH: phillips truss head

PTO: power-take-off

RH: right hand

ROPS: roll-over protection system

RRB: rear roller brush

SFH: slotted fillister head

SHH: slotted hex head

SHWH: slotted hex washer head

SPH: slotted pan head

SQH: square head

SRH: slotted round head

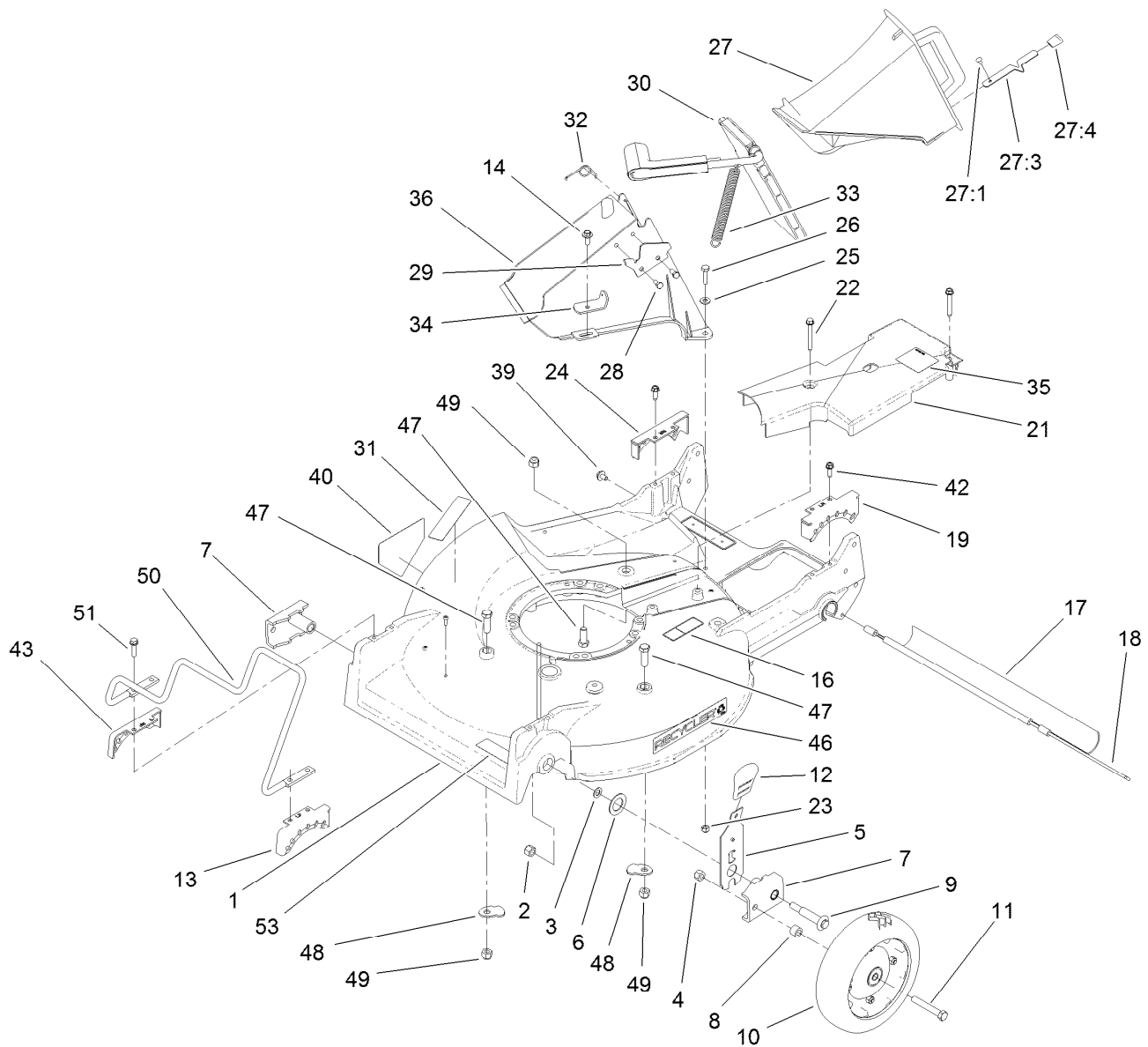
STD: standard

TAP: self tapping

TTH: torx truss head

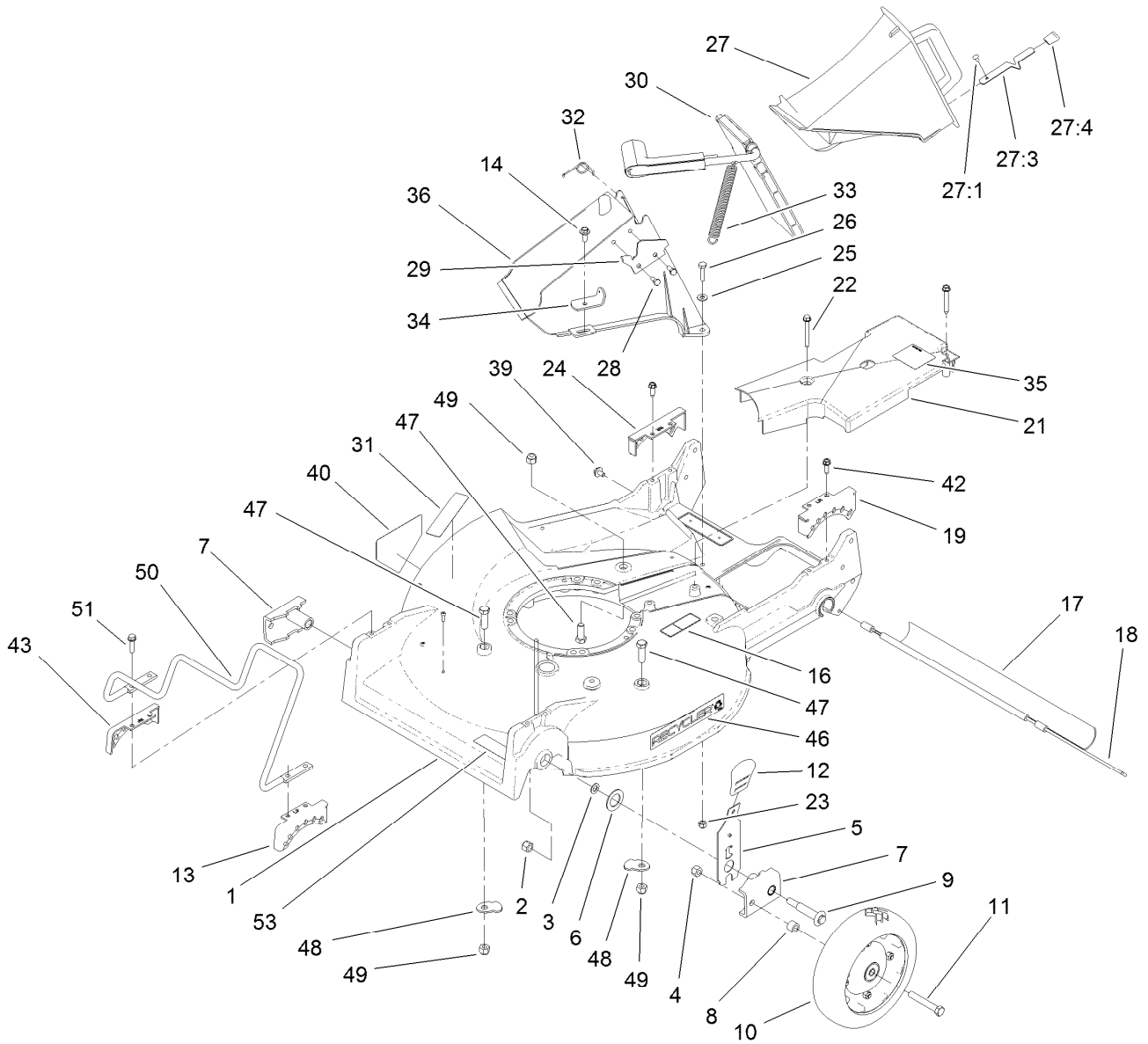
Contents

Housing, Chute and Wheel Assembly.....	4
Housing Assembly No. 98-7146	6
Front Wheel and Tire Assembly No. 121-1380	7
Blade Brake Assembly	8
Fuel Tank Assembly.....	10
Handle Assembly	11
Control Panel Assembly	12
Rear Drive and Wheel Assembly	13
Rear Wheel and Tire Assembly No. 121-1379	14
Gear Case Assembly No. 74-1860	15
Grass Bag Assembly No. 121-1391	16
Attachments and Accessories	17



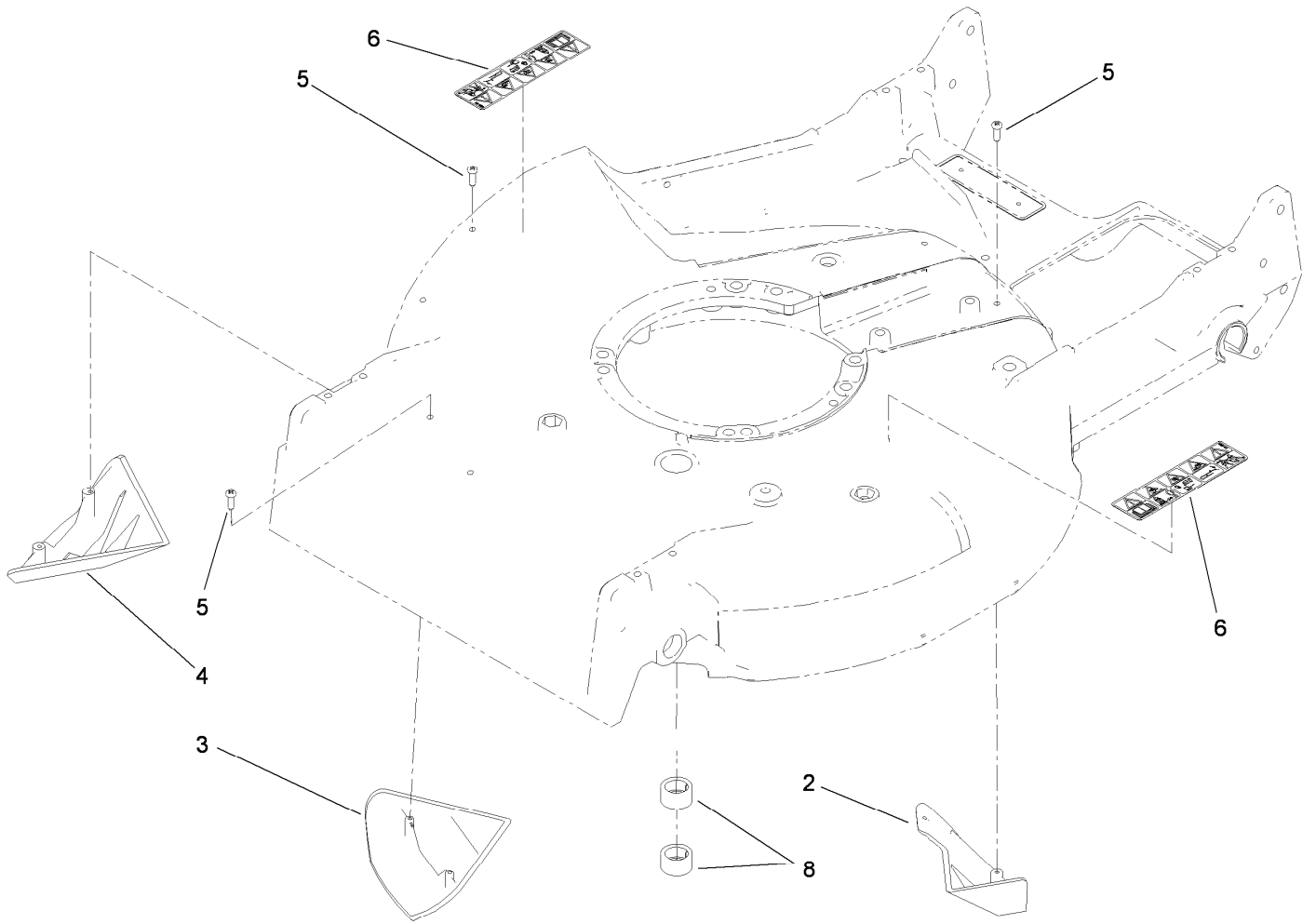
Housing, Chute and Wheel Assembly

Ref.	Part Number	Qty.	Description	Ref.	Part Number	Qty.	Description
1	98-7146	1	Housing	24	49-8750	1	Quadrant-Rear, RH
2	3296-6	2	Nut-Lock	25	3256-22	2	Washer-Flat
3	40-1940	2	Washer	26	321-8	2	Screw-HH
4	32152-2	2	Nut-Lock, Cone	27	77-0500	1	Discharge Plug ASM
5	119-2323	2	Front Spring Arm ASM	27:1	3295-35	1	Rivet-Head, Flat
6	257-3	2	Washer-Thrust	27:3	76-4640	1	Latch-Plug, Discharge
7	61-8300	2	Arm-Pivot, Front	27:4	76-4650	1	Grip-Latch
8	52-2480	2	Spacer-Wheel	28	46-8090	2	Screw-Plastite
9	114-3468	2	Screw-Shoulder	29	93-3154	1	Latch-Plate
10	121-1380	2	Wheel And Tire ASM	30	93-7351	1	Discharge Door ASM
11	323-12	2	Screw-HH	31	117-2718	1	Decal-Arrester, Spark
12	110-0549	2	Knob-HOC	32	80-3770	1	Retainer-Door
13	49-8760	1	Quadrant-Front, LH	33	76-4660	1	Spring-Door
14	46-6811	1	Screw-HWH	34	71-9350	1	Bracket-Spring
16	121-1449	1	Decal-Warning, Block	35	119-7894	1	Decal-Grease
17	112-9989	1	Shield-Trailing	36	82-9152	1	Tunnel-Discharge
18	33-3208	1	Rod-Shield	39	46-6810	1	Screw And Washer ASM
19	49-8740	1	Quadrant-Rear, LH	40	94-8072	1	Decal-Danger
21	74-1770	1	Cover-Belt	42	49-2040	4	Screw-HWHTF
22	117-5248	2	Screw-HWHTF	43	49-8770	1	Quadrant-Front, RH
23	3296-42	2	Nut-Lock, NI	46	106-0689	1	Decal



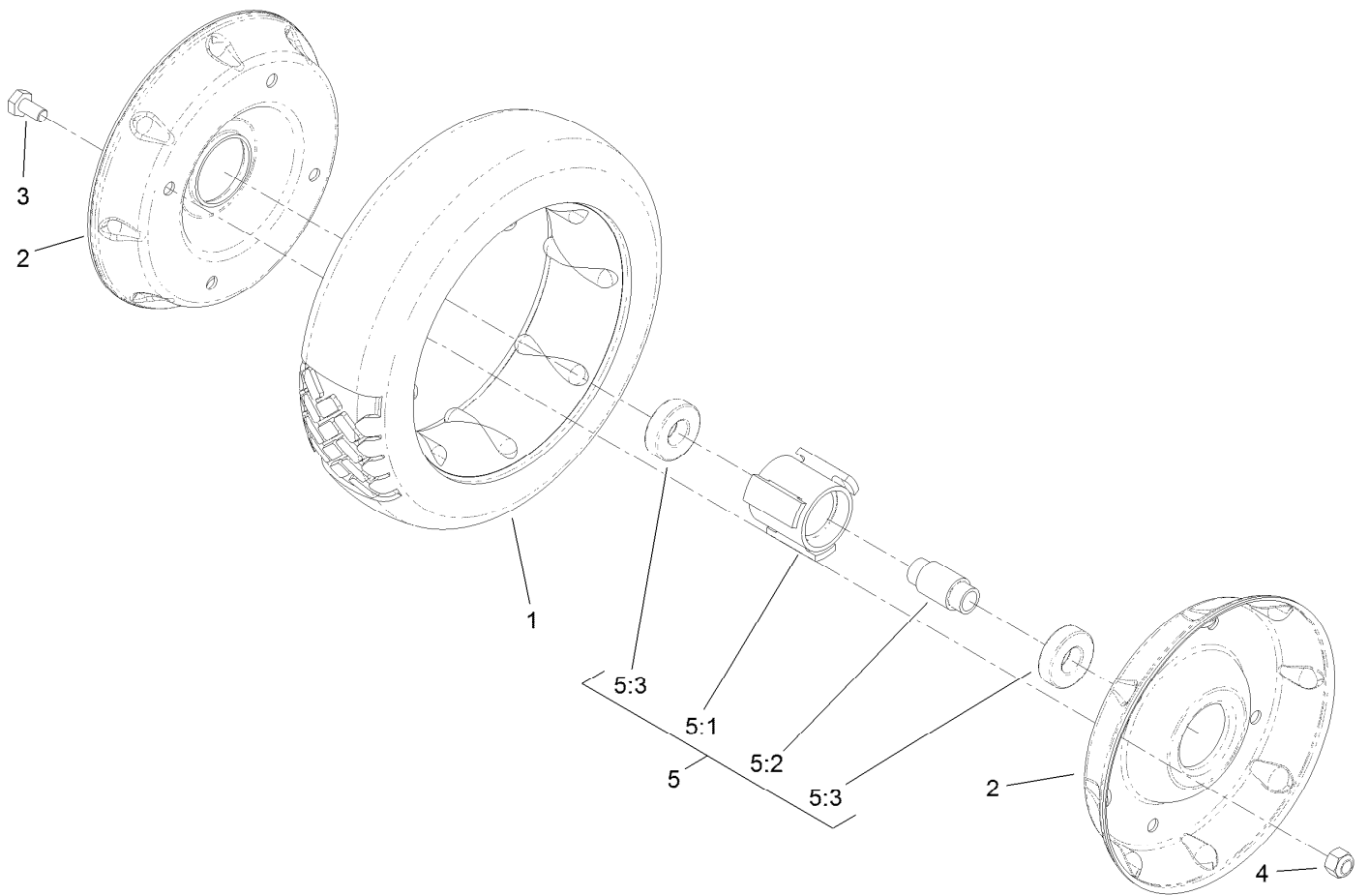
Housing, Chute and Wheel Assembly (continued)

<i>Ref.</i>	<i>Part Number</i>	<i>Qty.</i>	<i>Description</i>	<i>Ref.</i>	<i>Part Number</i>	<i>Qty.</i>	<i>Description</i>
47	323-6	3	Screw-HH	50	109-7638	1	Guard-Engine
48	84-8930	2	Shield-Retainer	51	32144-86	4	Screw-HWHTF
49	3296-39	3	Nut-Lock, NI	53	68-7410	1	Decal-Blade



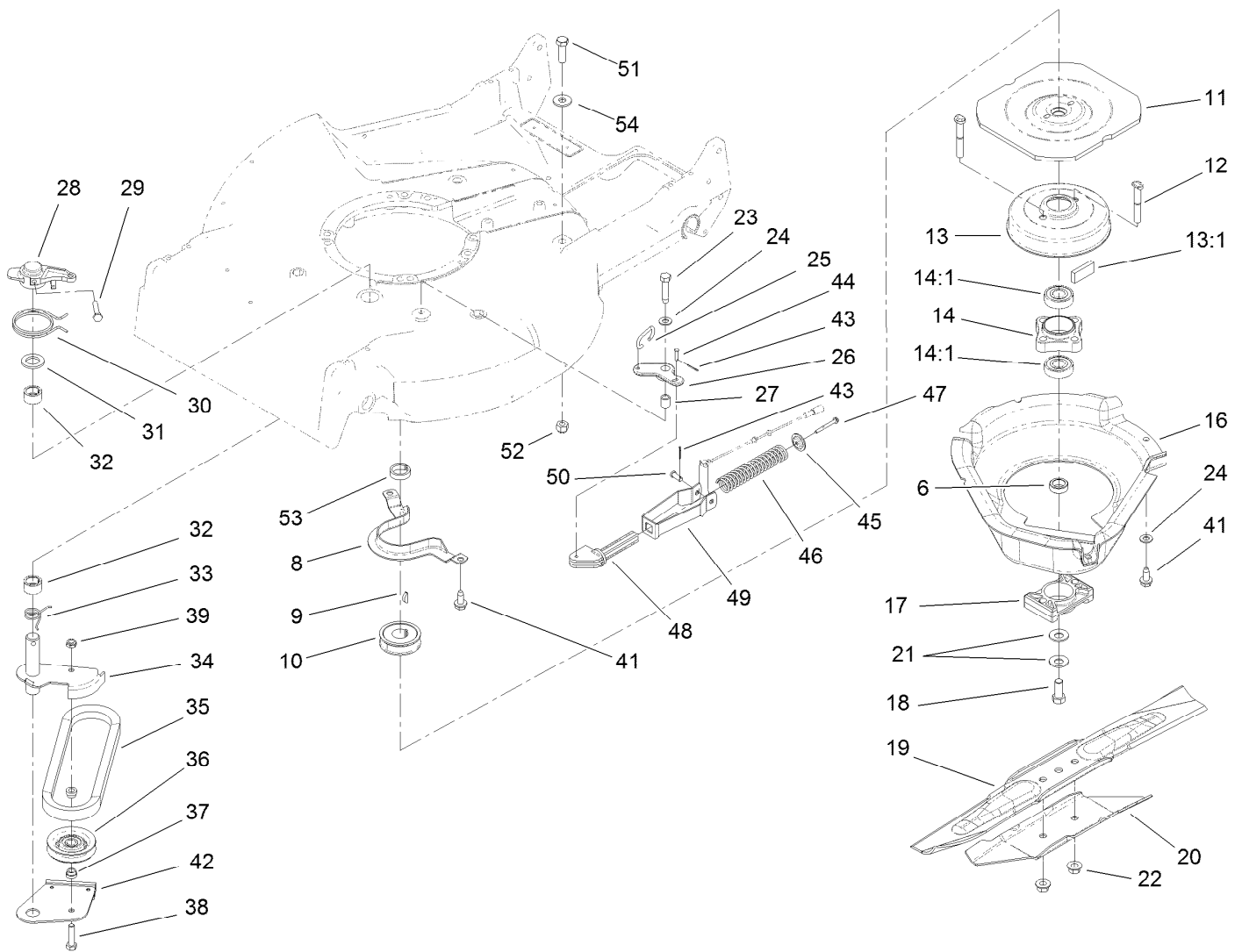
Housing Assembly No. 98-7146

Ref.	Part Number	Qty.	Description
2	92-1750	1	Kicker-Rear
3	92-1720	1	Kicker-Front
4	92-1730	1	Kicker-RH
5	32144-111	6	Screw-PPH
6	110-4978	2	Decal-Danger
8	68-9780	2	Bearing



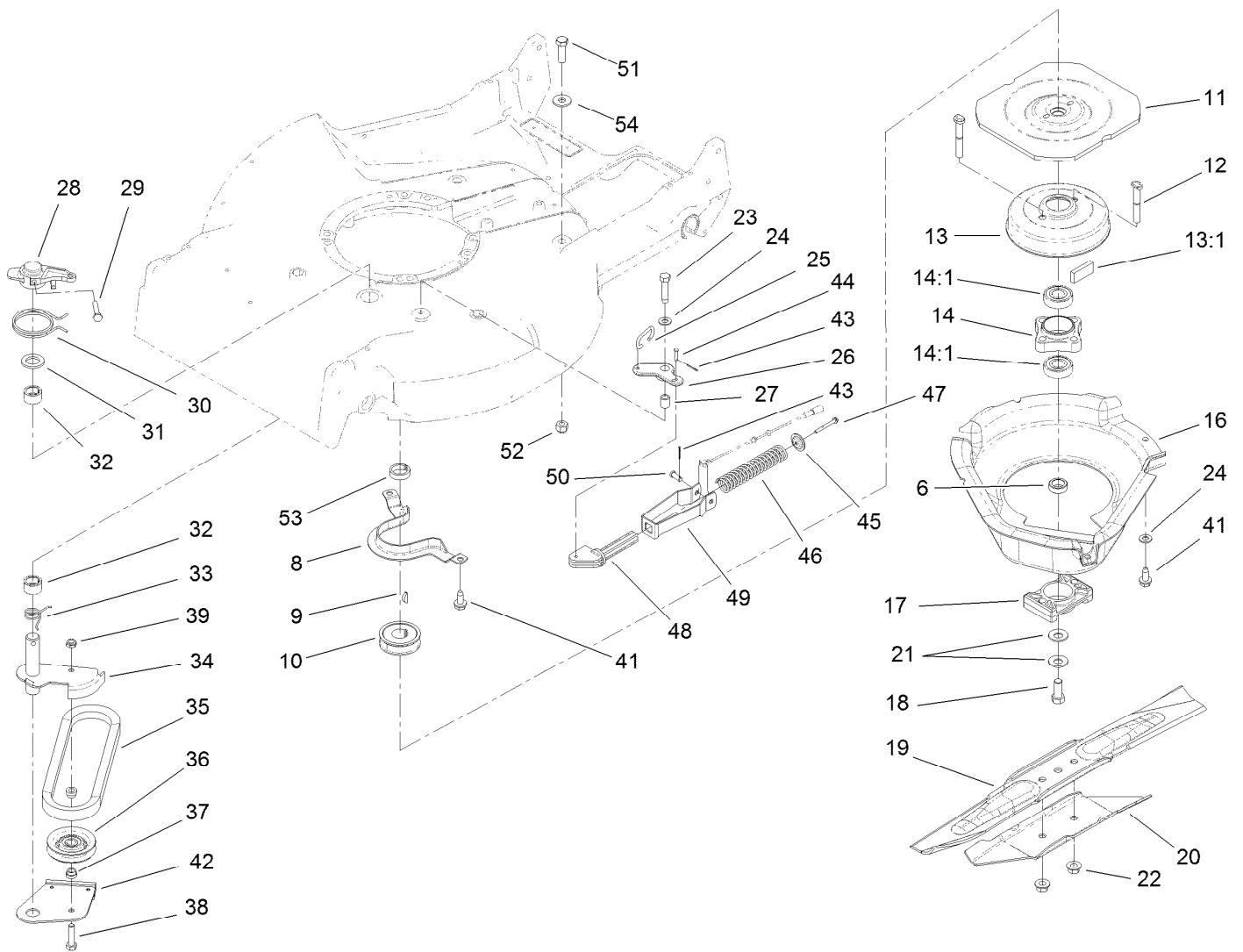
Front Wheel and Tire Assembly No. 121-1380

<i>Ref.</i>	<i>Part Number</i>	<i>Qty.</i>	<i>Description</i>
1	53-7740	1	Tire
2	121-1365-06	2	Rim-Half, Wheel
3	321-2	4	Screw-HH
4	3296-42	4	Nut-Lock, NI
5	121-1377	1	Hub And Bearing ASM
5:1	52-2410	1	Hub-Bearing
5:2	52-2440	1	Spacer-Bearing
5:3	109-8020	2	Bearing-Ball



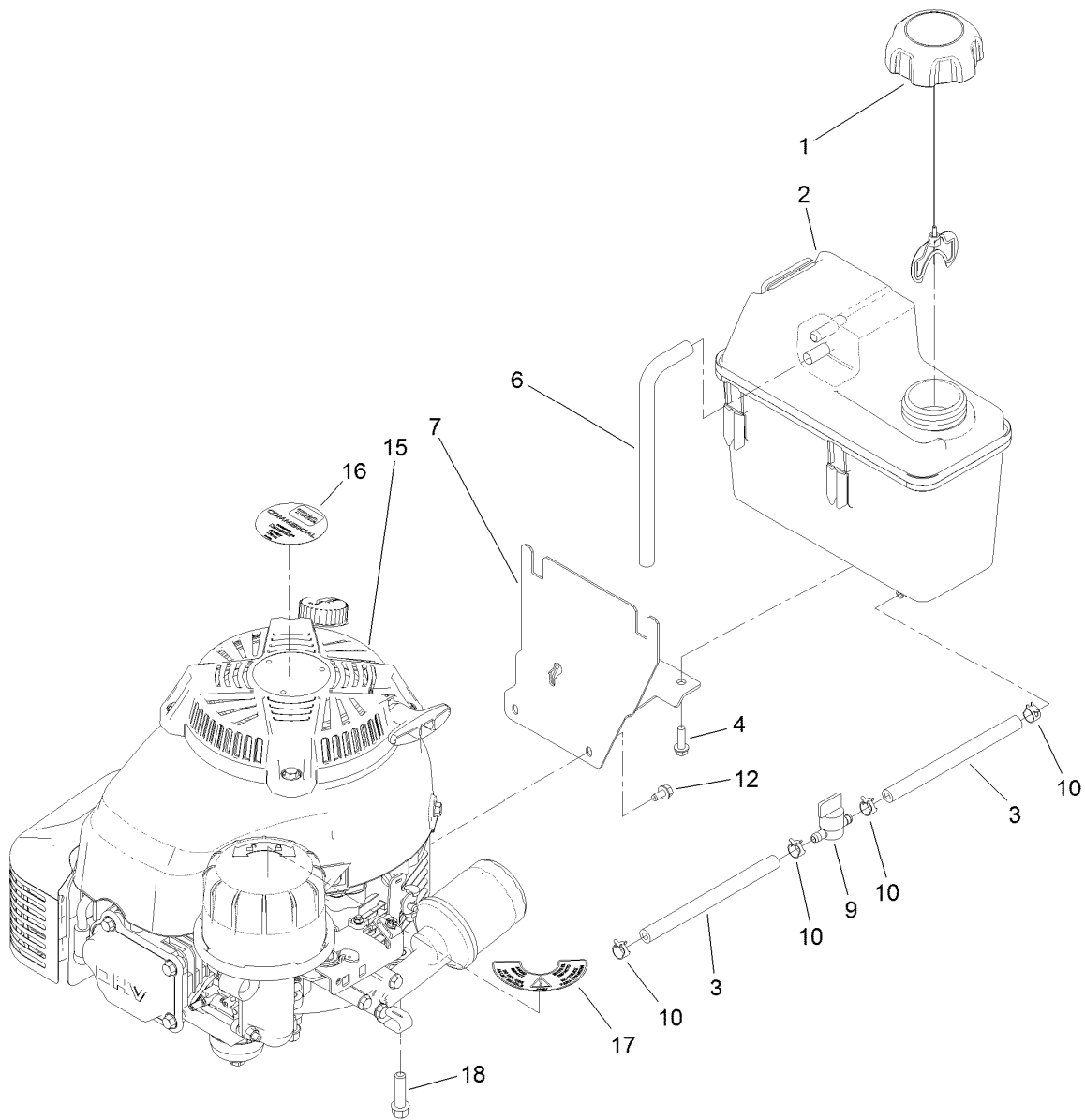
Blade Brake Assembly

Ref.	Part Number	Qty.	Description	Ref.	Part Number	Qty.	Description
6	107-4058	1	Spacer-Shaft, Output	27	49-7950	1	Sleeve-Bellcrank
8	66-0570-03	1	Bracket-Guide, Belt	28	49-2820	1	Lever
9	3257-17	1	Key-Woodruff	29	32104-96	1	Screw-HH
10	56-6180	1	Pulley-Driver	30	49-7970	1	Spring-Torsion
11	56-6160-03	1	Flywheel-BBC	31	70-1160	1	Washer
12	42-3190	2	Bolt-Blade	32	68-9780	2	Bearing
13	94-9431	1	Brake Drum ASM	33	85-6880	1	Spring-Torsion
13:1	52-3480	2	Dampener-Vibration	34	84-9130	1	Arm-Idler
14	42-6890	1	Hub ASM	35	42-0884	1	V-Belt
14:1	100-1048	2	Bearing-Ball	36	117-5299	1	Pulley-Idler
16	46-5693	1	Shield	37	46-5631	2	Spacer-Pulley, Idler
17	107-4275	1	Spacer-Blade	38	322-6	1	Screw-HH
18	3212-4	1	Screw-HH	39	3296-47	1	Nut-Lock, NI
19	91-2256-03	1	Blade-21 Inch	41	32144-70	3	Screw-HWHTF
20	91-2255-03	1	Stiffener-Blade	42	121-1351	1	Brake Plate ASM
21	1-603610	2	Washer-Spring	43	3272-1	2	Pin-Cotter
22	54-9190	2	Nut-Lock	44	84-9050	1	Pin-Spring
23	32104-107	1	Screw-HH	45	65-5280	1	Retainer-Spring
24	3256-23	2	Washer-Flat	46	84-9100	1	Spring
25	49-2810	1	Link-Control	47	46-7040	1	Screw-HWHTF
26	49-7960	1	Bellcrank	48	106-0842	1	Guide-Spring



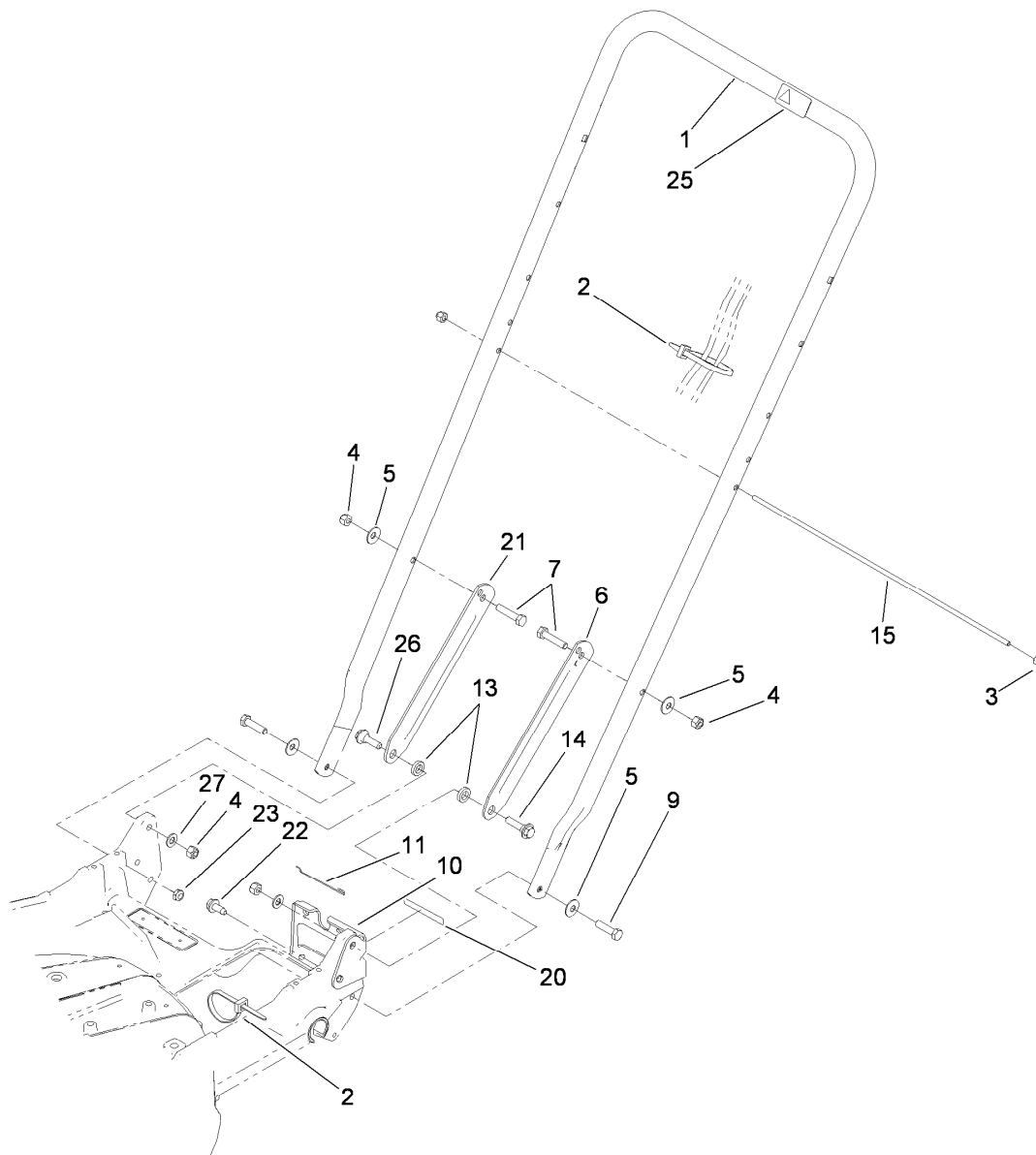
Blade Brake Assembly (continued)

<i>Ref.</i>	<i>Part Number</i>	<i>Qty.</i>	<i>Description</i>	<i>Ref.</i>	<i>Part Number</i>	<i>Qty.</i>	<i>Description</i>
49	107-4087-03	1	Bracket-Spring	52	3296-39	1	Nut-Lock, NI
50	84-9040	1	Pin-Cable	53	110-2142	1	Spacer-Pulley
51	323-7	1	Screw-HH	54	80-6990	1	Washer-Hardened



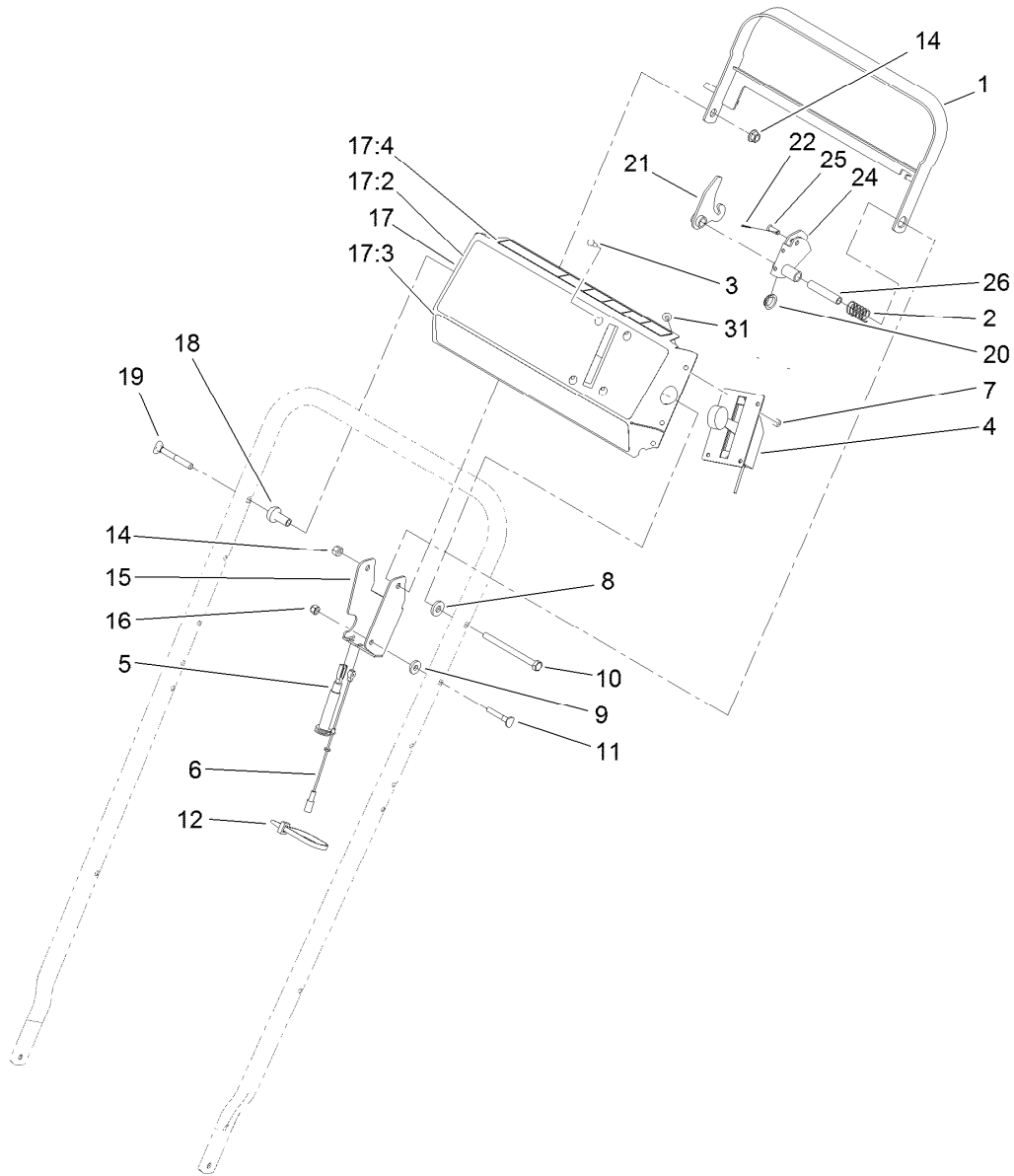
Fuel Tank Assembly

Ref.	Part Number	Qty.	Description
1	109-6776	1	Cap-Ratchet, Tethered
2	114-0280	1	Tank-Fuel
3	107-0588	2	Hose-Fuel
4	46-8091	2	Screw-HWH
6	115-0962	1	Hose-Vent, Canister
7	115-0954-03	1	Tank Mount ASM
9	1-603770	1	Valve-Fuel
10	2412-98	4	Clamp-Hose
12	104-2628	3	Screw-HWH
15	121-1400	1	Engine-Kawasaki, Fj180V-Bm07-M
16	110-0520	1	Decal
17	114-3415	1	Decal
18	95-1727	4	Screw-Taptite



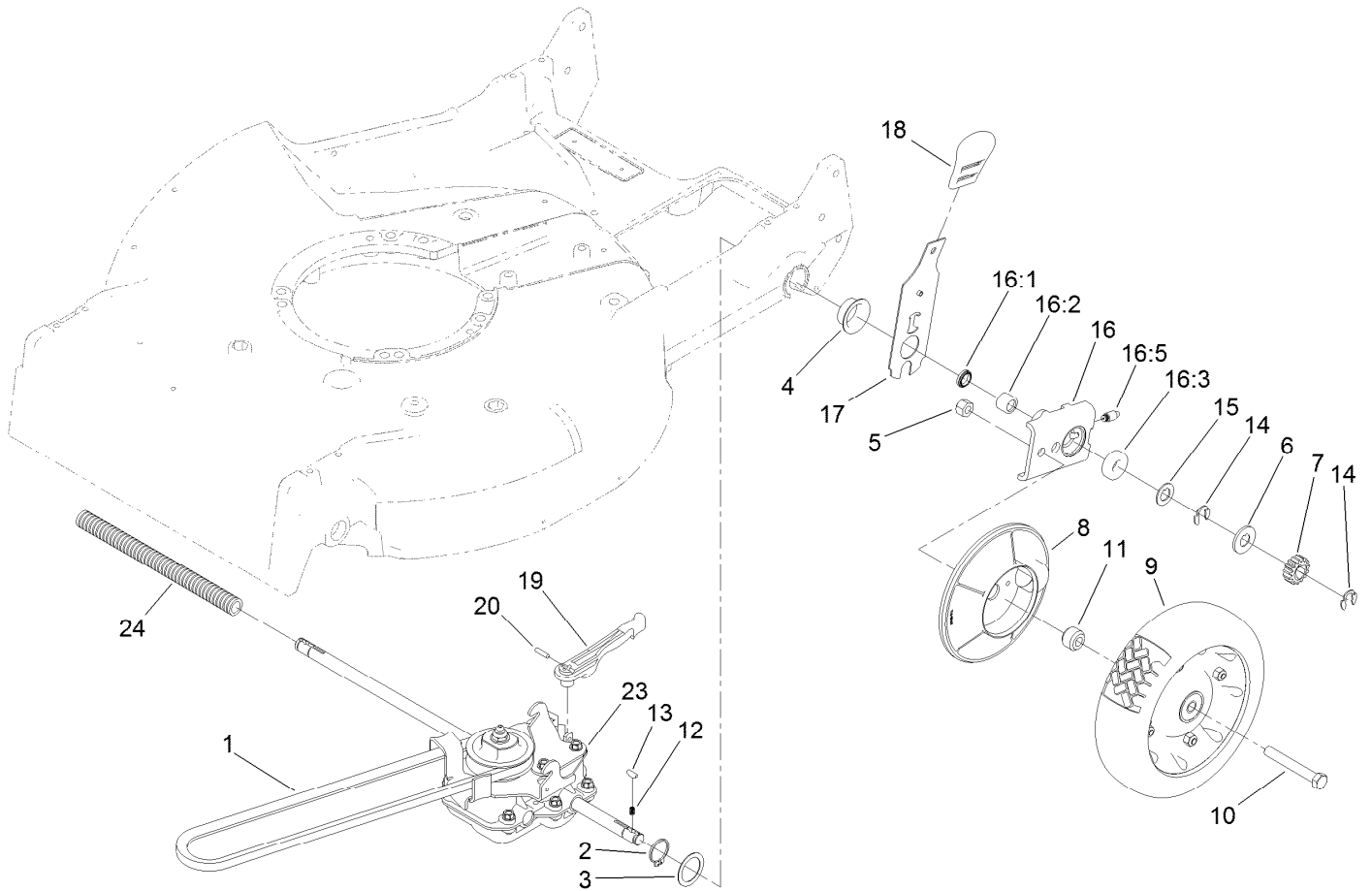
Handle Assembly

<i>Ref.</i>	<i>Part Number</i>	<i>Qty.</i>	<i>Description</i>	<i>Ref.</i>	<i>Part Number</i>	<i>Qty.</i>	<i>Description</i>
1	98-2385-03	1	Handle	13	3-3287	2	Spacer
2	3290-378	1	Tie-Cable	14	27-7210	1	Screw-Shoulder
3	32111-7	2	Nut-Cap	15	48-2810	1	Rod-Support, Bag
4	3296-29	4	Nut-Lock, NI	20	74-1970	1	Decal-Position, Gear
5	3290-456	4	Washer-Belleville	21	100-3297-03	1	Latch-Handle, RH
6	100-3298-03	1	Latch-Handle, LH	22	32144-70	1	Screw-HWHTF
7	322-7	2	Screw-HH	23	3296-47	2	Nut-Lock, NI
9	322-6	2	Screw-HH	25	98-4387	1	Decal-Protection, Ear
10	74-1741	1	Bracket-Adjustment, Traction	26	27-7211	1	Screw-Shoulder
11	46-7030	1	Retainer-Cable	27	3256-23	2	Washer-Flat



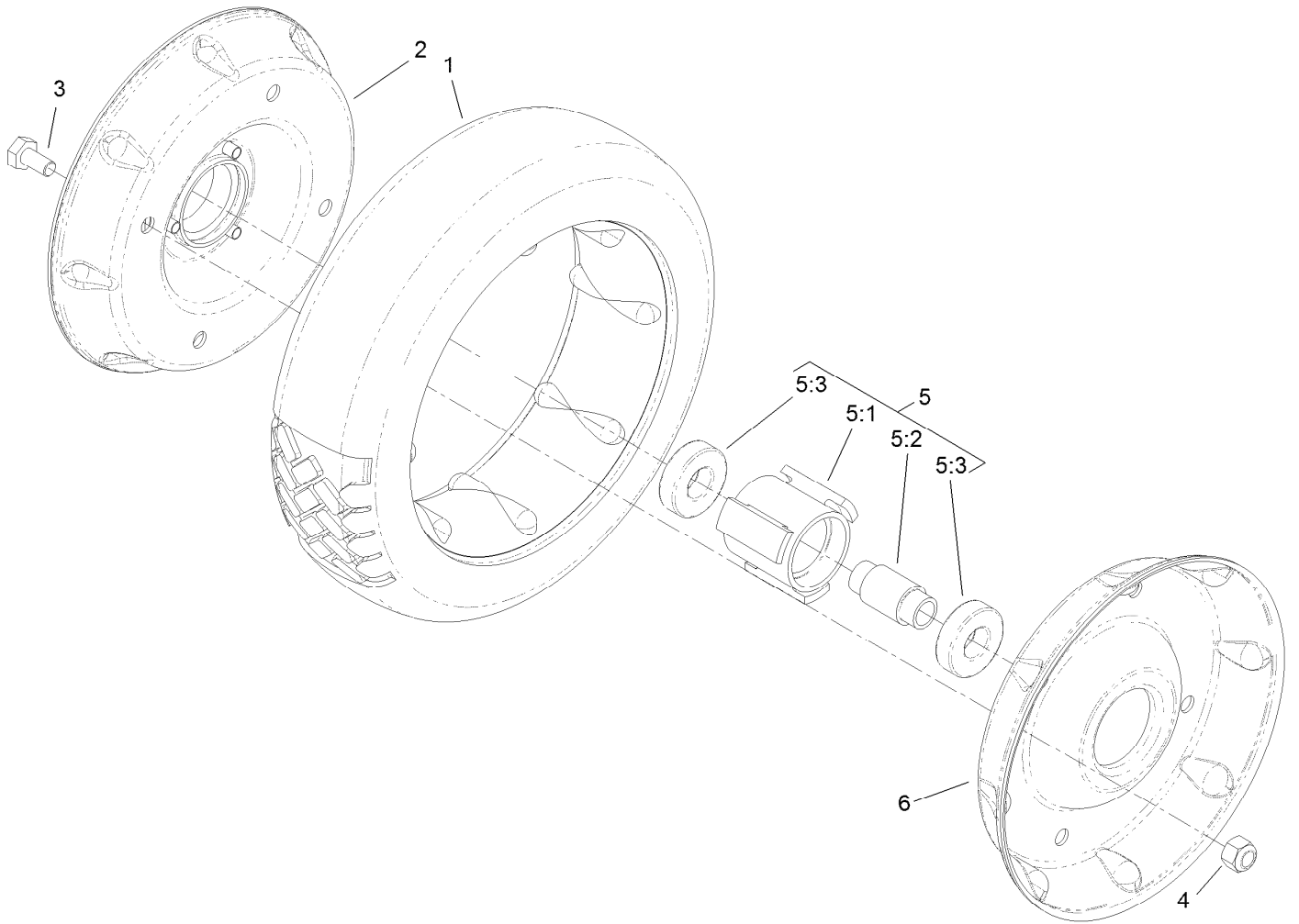
Control Panel Assembly

<i>Ref.</i>	<i>Part Number</i>	<i>Qty.</i>	<i>Description</i>	<i>Ref.</i>	<i>Part Number</i>	<i>Qty.</i>	<i>Description</i>
1	84-8940-03	1	Bar-Control	16	3296-42	1	Nut-Lock, NI
2	85-6750	1	Spring-Control	17	14-7709	1	Panel ASM
3	3250-12	4	Screw-PPH	17:2	107-4098	1	Decal-Panel
4	117-3543	1	Control-Throttle	17:3	106-0771	1	Decal-Panel
5	84-9120	1	Cable-Traction	17:4	112-8736	1	Decal-Danger Panel
6	84-9110	1	Cable-Clutch	18	49-1631	1	Spacer-Support
7	3296-2	4	Nut-Lock, NI	19	17-9427	1	Screw
8	71-9310	1	Spacer	20	86-9320	1	Bushing-Flange
9	71-9320	1	Spacer	21	84-9000	1	Lever-Traction
10	322-19	1	Screw-HH	22	3272-1	1	Pin-Cotter
11	46-6430	1	Screw-Handle	24	84-8990	1	Lever-BBC
12	3290-378	1	Tie-Cable	25	84-9040	1	Pin-Cable
14	104-8300	2	Nut-Flange, NI	26	84-9030	1	Spacer-Bracket, Control
15	92-1778-03	1	Bracket-Control	31	32104-76	6	Screw-Thd Cutting, HWH



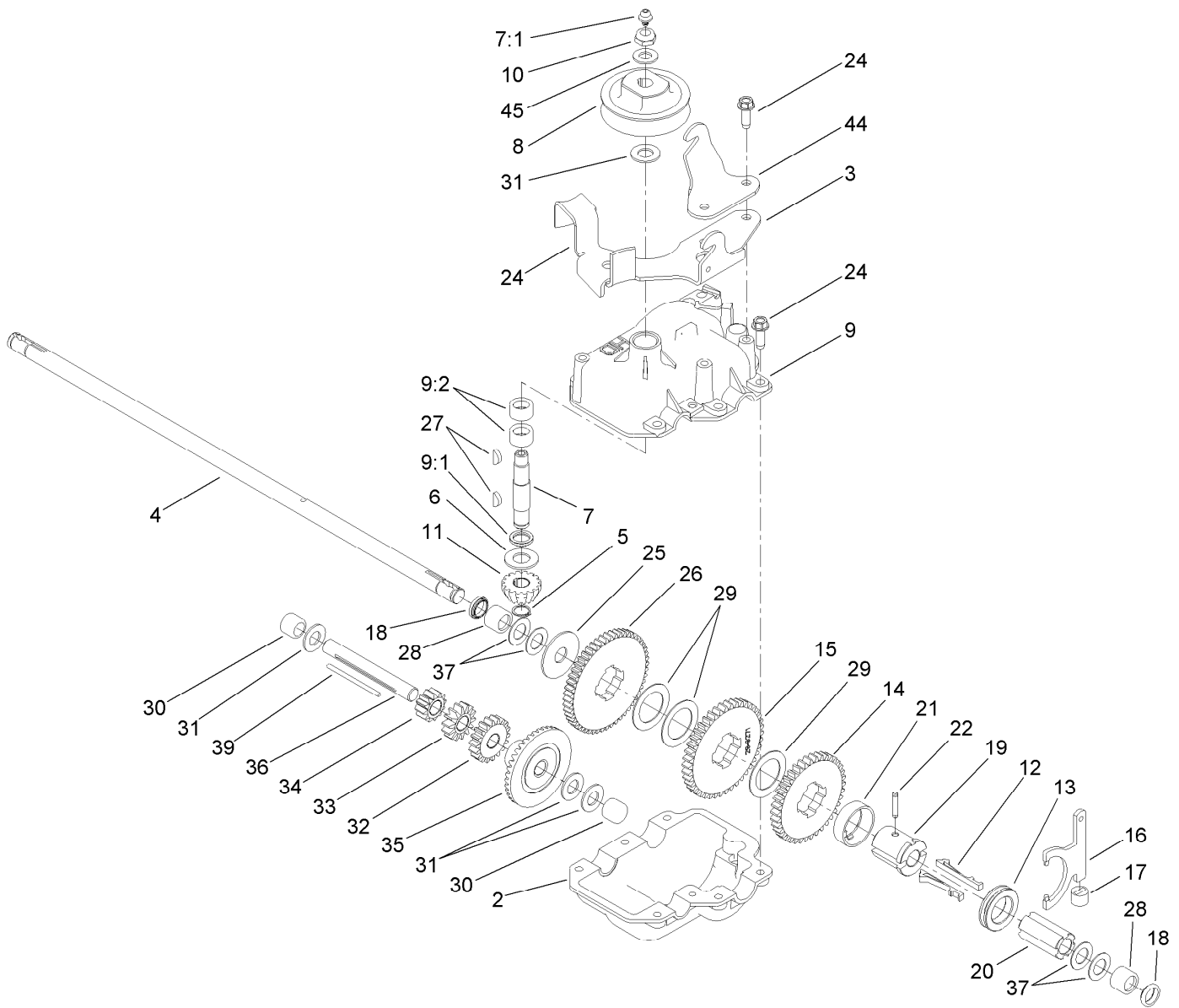
Rear Drive and Wheel Assembly

<i>Ref.</i>	<i>Part Number</i>	<i>Qty.</i>	<i>Description</i>	<i>Ref.</i>	<i>Part Number</i>	<i>Qty.</i>	<i>Description</i>
1	36-8070	1	V-Belt	15	49-7700	2	Washer-Thrust, Outer
2	32151-36	2	Ring-Retaining	16	74-1851	2	Pivot Arm ASM
3	74-1810	2	Washer	16:1	47-6730	1	Seal-Oil
4	48-2170	2	Cap-End	16:2	117-3500	1	Bearing-Caged Needle Roller
5	32152-2	2	Nut-Lock, Cone	16:3	52-2450	1	Bearing-Wheel
6	62-3830	2	Washer-Thrust, Outer	16:5	92-6316	1	Zerk
7	39-9160	2	Gear-Pinion	17	119-2324	2	Rear Spring Arm ASM
8	74-1640	2	Cover-Wheel	18	110-0549	2	Knob-HOC
9	121-1379	2	Wheel And Tire ASM	19	74-1960	1	Lever-Shift
10	323-13	2	Screw-HH	20	32121-99	1	Pin-Coil
11	74-1650	2	Spacer-Cover, Wheel	23	74-1860	1	Gear Case ASM
12	39-9650	2	Spring-Compression	24	121-1357	1	Cover-Shaft, Drive
13	612066	2	Key				
14	32151-68	4	Ring-Retaining				



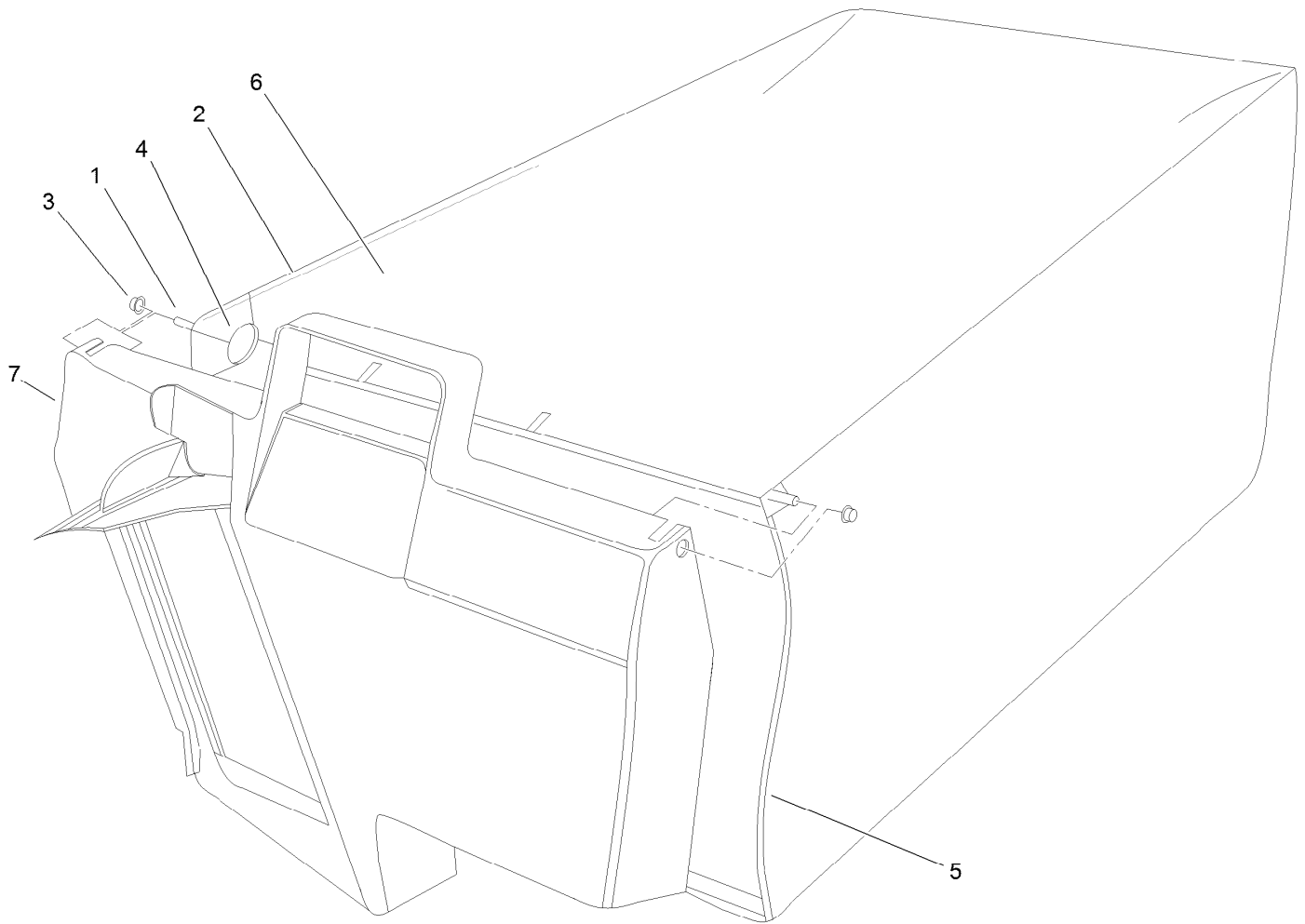
Rear Wheel and Tire Assembly No. 121-1379

<i>Ref.</i>	<i>Part Number</i>	<i>Qty.</i>	<i>Description</i>
1	53-7740	1	Tire
2	121-1378-06	1	Wheel Half And Gear ASM
3	321-2	4	Screw-HH
4	3296-42	4	Nut-Lock, NI
5	121-1377	1	Hub And Bearing ASM
5:1	52-2410	1	Hub-Bearing
5:2	52-2440	1	Spacer-Bearing
5:3	109-8020	2	Bearing-Ball
6	121-1365-06	1	Rim-Half, Wheel



Gear Case Assembly No. 74-1860

Ref.	Part Number	Qty.	Description	Ref.	Part Number	Qty.	Description
2	119-7863	1	Gear Case-Lower	20	39-6720	1	Sleeve
3	49-8461-03	1	Bracket-Guide, Belt	21	55-8020	1	Retainer-Key
4	74-1890	1	Shaft-Output	22	3285-19	1	Pin-Groove
5	32151-57	1	Ring-Retaining	24	49-2040	8	Screw-HWHTF
6	47-2910	1	Washer-Thrust	25	29-9690	1	Washer
7	13-5149	1	Input Shaft ASM	26	46-3560	1	Gear
7:1	302-63	1	Zerk	27	3257-1	2	Key-Woodruff
8	39-6740	1	Pulley	28	117-3500	2	Bearing-Caged Needle Roller
9	13-9739	1	Upper Gearcase ASM	29	36-4770	3	Washer
9:1	47-7260	1	Seal	30	252-103	2	Bearing-Needle, Closed
9:2	47-7270	2	Bearing-Needle	31	36-4792	4	Washer-Thrust
10	3296-5	1	Nut-Lock	32	39-6650	1	Gear-18T
11	39-6660	1	Pinion-Bevel	33	46-3550	1	Gear-14T
12	29-9330	2	Key-Shift	34	46-3540	1	Gear-12T
13	29-9340	1	Collar-Shift	35	74-1760	1	Gear-Bevel
14	42-4740	1	Gear-38T	36	53-7950	1	Shaft-Intermediate
15	29-9271	1	Gear-42T	37	36-4780	4	Washer-Plain
16	60-8870	1	Yoke-Shift	39	39-7842	1	Key
17	29-9570	1	Bushing-Yoke	44	74-1750-03	1	Bracket-Engage, Traction
18	47-6730	2	Seal-Oil	45	3256-45	1	Washer-Flat
19	55-8010	1	Sleeve-Gear				



Grass Bag Assembly No. 121-1391

<i>Ref.</i>	<i>Part Number</i>	<i>Qty.</i>	<i>Description</i>
1	33-4820	1	Hinge-Door, Bag
2	121-1388	1	Frame-Bag, Upper
3	3290-422	2	Nut-Push
4	36-6910	2	Spring
5	42-4020	1	Frame-Bag
6	106-0926	1	Bag-Grass
7	121-1389	1	Door-Bag, Grass

Attachments and Accessories

For 22198 21in Heavy-Duty Recycler/Rear Bagger Lawn Mower

Product Name	Model/Part
Blade-Atomic, 21in	104-1302
Bag-Large, Walk Behind (Toro).....	490-7315
Bag-Walk Behind (Toro).....	490-7318
Bag-Large, Walk Behind	490-7322
Bag-Walk Behind	490-7325
Cover-Lawnmower	490-7462
Side Discharge Kit	59199

Notes:

Notes:



Count on it.