

FITTING AND OPERATION INSTRUCTION SHEET DELUXE OPTION PVC MODEL / FABRIC SEAT KIT

Models 02865 / 02866

For LT3240, T4240, R3240T, GM3400, CT2120, CT2140 and LT3340

Models 02740, 02750, 02770, 30651, 30655, 30656 and 30657

ORIGINAL VERSION (EN)

FROM SERIAL NO 312000001

CONTENTS

Description	Page No.
Introduction	1
Safety precautions	2
Specifications	2
Delivery checklist - PVC & Fabric Deluxe Seats (Models 02865 & 02866) For ALL Models	2
Delivery checklist exploded view - PVC & Fabric Deluxe Seats (Models 02865 & 02866) For LT3240, T4240 & R3240T	3
Delivery checklist exploded view - PVC & Fabric Deluxe Seats (Models 02865 & 02866) For GM340, CT2120, CT2140 & LT3340	4
Fitting Instructions - For LT3240, T4240 & R3240T (Models 02740, 02750 & 02770)	5 - 6
Fitting Instructions - For GM340, CT2120, CT2140 & LT3340 (Models 30651, 30655, 30656 & 30657)	6 - 7
Seat functions & Operation	8 - 9
Maintenance	9
Notes	10 - 11
Warranty	12

INTRODUCTION

This kit is a Deluxe seat which provides ultimate seating comfort and safety.

This kit is suitable for the T4240, R3240T, CT2140, CT2120, LT3340 and GM3400 (30651) only.

This instruction sheet should be regarded as part of the machine, as it gives essential information regarding machine safety, specifications, operating instructions and maintenance.

For all other information refer to your Operator's Manual and Parts List.

In pursuit of continuous product development, TORO reserve the right to alter specifications without notice.

Left and Right : Throughout this manual refers to the mower when looking in the direction of forward travel.

Remove the kit from the carton and check that all items have been supplied correctly, refer to the Parts List. If any items are missing contact your local dealer.

SAFETY PRECAUTIONS



THIS SYMBOL MEANS BE ALERT! YOUR SAFETY IS INVOLVED.
EXERCISE GREAT CARE AND FOLLOW THE ADVICE GIVEN TO AVOID POTENTIAL
HAZARDOUS SITUATIONS



Before working on the machine it is essential that you read and understand the Safety Precautions as shown in the Operator's Manual.



Before working on the machine it is essential that :

- The engine is switched off and the battery terminals are disconnected.
- The parking brake is applied.
- There is no pressure in the hydraulic system.
- The cutterheads are fully down on the ground.



WARNING: ALWAYS SEEK PROFESSIONAL ADVICE FROM YOUR LOCAL AUTHORISED DEALER IF, AFTER STUDYING THIS, YOU ARE UNSURE HOW TO FIT THIS KIT.

SPECIFICATIONS

Weight: 41 Kg

DELIVERY CHECK LIST - PVC & FABRIC DELUXE SEATS (MODELS 02865 & 02866) FOR ALL MODELS

ITEM NO.	DESCRIPTION	PART NO.	QTY	NOTE
1	SEAT DELUXE PVC	111-5550	1	02865 Only
	SEAT DELUXE FABRIC	111-5551	1	02866 Only
1:1	CUSHION SEAT	111-5543	1	02865 Only
	CUSHION SEAT	111-5546	1	02866 Only
1:2	CUSHION BACKREST	111-5544	1	02865 Only
	CUSHION BACKREST	111-5547	1	02866 Only
1:3	BACKREST EXTENSION	111-5545	1	02865 Only
	BACKREST EXTENSION	111-5548	1	02866 Only
1:4	RETRACTABLE SEAT BELT ASM	111-4936	1	
1:5	ARM REST LH	111-5540	1	
1:6	ARM REST RH	111-5541	1	
1:7	SEAT SWITCH KIT	111-5542	1	
4	SETSCREW M8*40	ZDH1H040U	4	
5	WASHER	09475	10	
6	NUT-HEX	ZNH1H000U	4	
7	WASHER-PLAIN	09270	2	
8	NUT	09442	4	
10	POWER LEAD - DELUXE SEAT	111-1140	1	
11	FUSE-10 AMP	70-09-026	1	
12	PM2 CONNECTOR GOTHIC	924620	1	
13	T152 3mm PIN GOTHIC	924622	2	
14	KIT - RELAY ASSY - DELUXE SEAT	111-0916	1	

**DELIVERY CHECKLIST EXPLODED VIEW - PVC & FABRIC DELUXE SEATS (MODELS 02865 & 02866)
FOR LT3240, T4240 & R3240T**

Fig 1

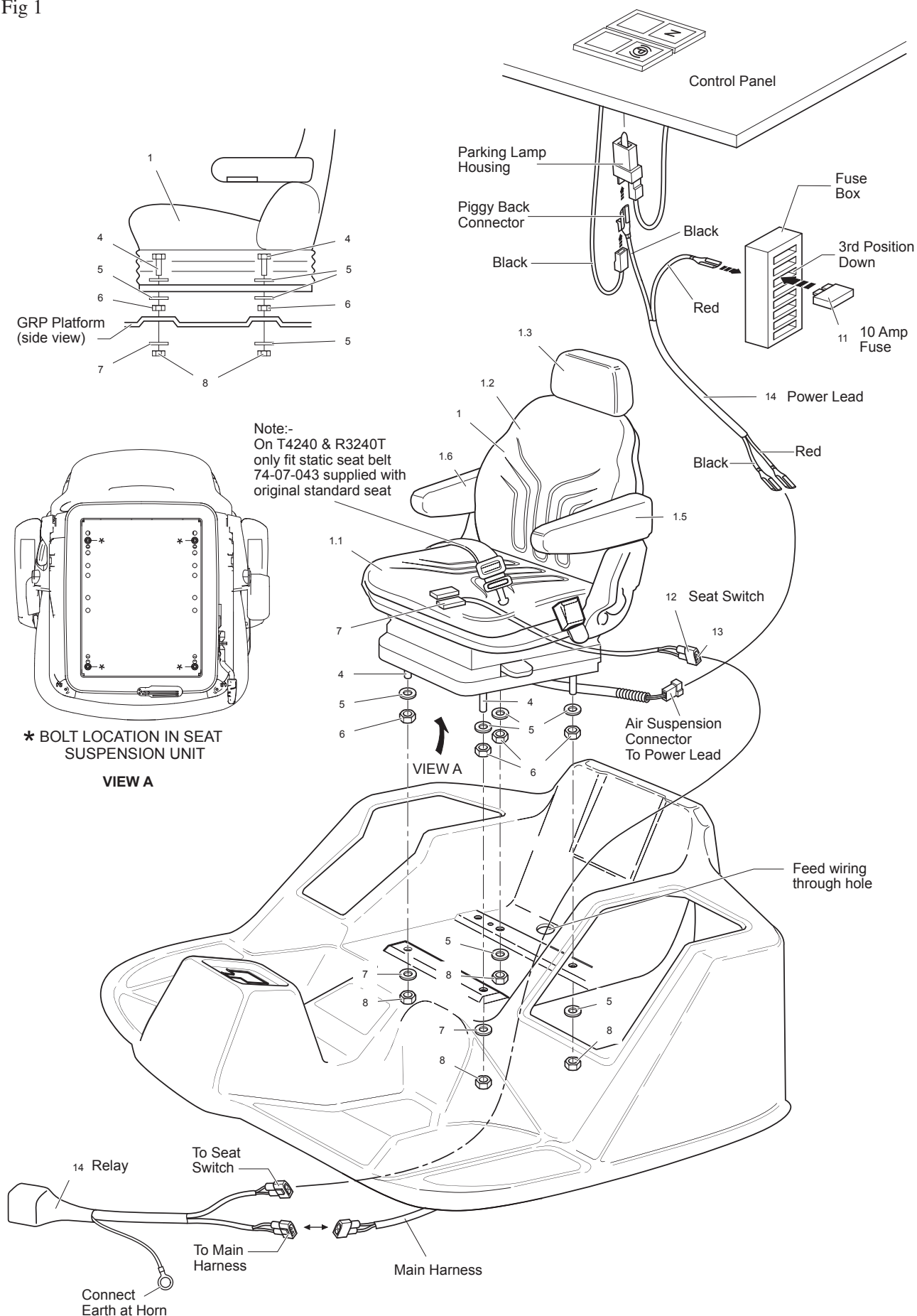
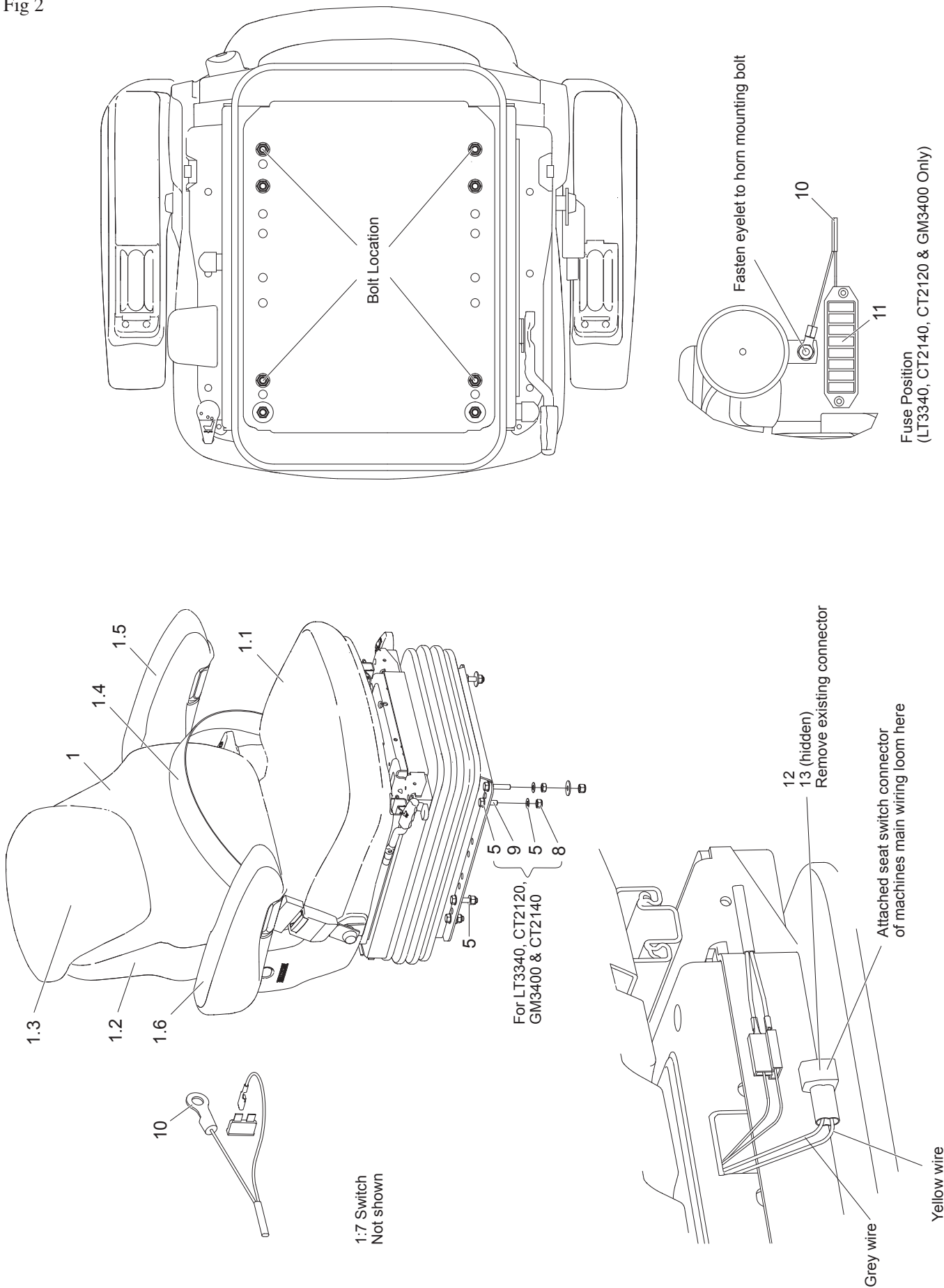


Fig 2



These instructions refer to the removal of the standard seat and the fitting of a deluxe seat.

1. Open the Engine cover.
2. Disconnect the battery negative lead.
3. Raise the operator platform.
4. Disconnect the seat switch cable from the machines wiring loom. Secure the seat connector to the seat.
5. Unfasten the sides of the rubber skirt at the bottom of the suspension unit, by first locating its mounting tags; these are mounted in a keyhole slot in the suspension unit. To remove, simply pull the skirt either forward or rearwards (depending on which tag is being removed), until the tag is over its hole, and pull out.
6. The seat fasteners can now be located. Support the seat to prevent it falling when its fixing nuts are removed.
7. Remove the four nuts from the bolts securing the seat. These bolts are locked with a lock nut and as such should not turn, when removing the nut, and will prevent the seat from sliding when all of the nuts are removed.
8. Lower the operator platform and apply the latch.
9. Lift the seat off of the platform.
10. Remove the static seat belt, and fit to the new seat assembly (Item 1).
11. At the back of the new seat assembly locate the connector with the yellow and grey wires. Cut off the connector.
12. Strip 5mm of insulation from each wire and crimp on pin (item 12). Fit both pins into a PM2 Gothic connector (item 13). Refer to Fig 1.
13. Fit the New Bolt, Washers and Locknuts (items 4, 5 & 6) to the new seat assembly.
14. Place the deluxe seat onto the operator platform, and locate the bolts into their mounting holes.
15. Supporting the seat to prevent it falling, raise the operator platform.
16. Fit the nuts and washers (items 7 & 8). Tighten to a torque of 27Nm.
17. Locate the relay assembly (item 14), connect to the seat switch connectors on the Seat and the main harness. Fasten the ring terminal to the machines chassis, using the horn mounting bolt.

FITTING INSTRUCTIONS - LT3240, T4240 & R3240T (MODELS 02740, 02750 & 02770) Continued

18. Locate the power lead, (without ring terminal) (item 14).
Connect to the seat connector (with the black / red wires).
Refer to Fig 1.
19. Route the wire around the platform pivot, and back to the control panel area. Ensure the cable is routed such that it cannot get crushed when the platform is lowered.
20. Working under the control panel, locate the parking lamp housing. Disconnect the black wire and replace it with the power leads black wire (fitted with a 'piggy back' connector. Fit the parking lamp lead to the 'piggy back' connector.
21. At the back of the fuse box connect the red wire of the power lead, to the 3rd fuse position from the top.
22. Secure all cables with the cable ties supplied.
23. Lower the Platform and engage the latch.
24. Reconnect the battery negative lead.
25. Close the engine cover.
26. Check that the seat switch operates correctly with reference to the machines operators manual.

FITTING INSTRUCTIONS - GM3400, CT2120, CT2140 & LT3340 (MODELS 30651, 30655, 30656 & 30657)

1. Open the Engine cover.
2. Disconnect the battery negative lead.
3. Raise the operator platform.
4. Open the lid of the Storage Pod on the left hand side of the operator area, remove the three handwheels inside, and remove the pod.
5. Disconnect the seat switch cable from the machines wiring loom. Secure the seat connector to the seat. Pass the harness through the hole in the seat pan.
6. Unfasten the sides of the rubber skirt at the bottom of the suspension unit, by first locating its mounting tags; these are mounted in a keyhole slot in the suspension unit. To remove, simply pull the skirt either forward or rearwards (depending on which tag is being removed), until the tag is over its hole, and pull out.
7. The seat fasteners can now be located. Support the seat to prevent it falling when its fixing nuts are removed.
8. Remove the four nuts from the bolts securing the seat. Leave the bolts in position to prevent the seat sliding forward when the last nut is removed.

9. Lower the operator platform and apply the latch.
10. Lift the seat off of the platform.
11. At the back of the new seat assembly locate the connector with the yellow and grey wires. Cut off the connector.
12. Strip 5mm of insulation from each wire and crimp on pin (item 12). Fit both pins into a PM2 Gothic connector (item 13). Refer to Fig 2.
13. Place the deluxe seat onto the operator platform, and fit the bolts and washers (items 9 & 5) for the left hand side of the seat into their mounting holes, loosely fit nuts and washers (items 5 & 8).
14. Supporting the seat to prevent it falling, raise the operator platform.
15. Fit the right hand side bolts, nuts and washers (items 9, 8, & 5). Tighten all four nuts to a torque of 27Nm.
16. Pull the machines wiring loom back through the hole in the seat pan and connect to the seat switch connector (yellow and grey wires).
17. Locate the power lead, (with a ring terminal) (item 10). Connect to the seat connector (with the black / red wires). Refer to Fig 2.
18. Route the wire around the platform pivot, and back to the fuse box area. Ensure the cable is routed such that it cannot get crushed when the platform is lowered.
19. Connect the ring terminal to the horn mounting bolt.
20. At the back of the fuse box connect the red wire of the power lead, to the 4th fuse position from the right (looking in the direction of forward travel).
21. Secure all cables with cable ties supplied.
22. Lower the Platform and engage the latch.
23. Reconnect the battery negative lead.
24. Close the engine cover.
25. Check that the seat switch operates correctly with reference to the machines operators' manual.

SEAT FUNCTIONS & OPERATION

Weight adjustment: The seat should be adjusted for the driver's weight by briefly pulling the actuator lever of the automatic weight and height adjuster with the vehicle at a standstill and the driver sitting on the seat.

The driver must sit absolutely still during adjustment.

To prevent damage to the health, the setting for the driver's weight must be checked and adjusted as necessary before the vehicle is driven. Refer to the arrow, Fig 3, item A.

Height adjustment: The seat height can be set pneumatically and is infinitely adjustable.

The seat height can be altered by pulling or pressing the actuator lever fully out or in. Refer to the arrow, Fig 3, item B. If the adjustment reaches the top or bottom end stop, the height is adjusted automatically in order to guarantee a minimum spring travel.

In order to avoid damage, do not operate compressor for more than 1 minute.

Fore/aft adjustment: Under certain driving conditions (for example with a trailer attached), it is useful to activate the fore/aft isolator. This means that shock impacts in the driving direction can be better absorbed by the driver seat. Refer to Fig 4.

Position 1 - fore/aft isolator on

Position 2 - fore/aft isolator off

The fore/aft adjustment is released by lifting the locking lever. Refer to Fig 5, item A.

The locking lever must latch into the desired position. It should not be possible to move the driver seat into another position when it is locked.

Lumbar support: By turning the adjustment knob (arrow, Fig 6) to the left or right, both the height and curvature of the backrest cushion can be individually adjusted.

This increases both the seating comfort and the performance of the driver.

Armrests: The armrests can be folded up if required and the height individually adjusted.

To adjust the armrests for height, separate the round cap (large arrow, Fig 7) from the cover, loosen the hexagon nut (item A, size 13mm) and adjust the armrest to the desired position and tighten the nut again.

Fig 3

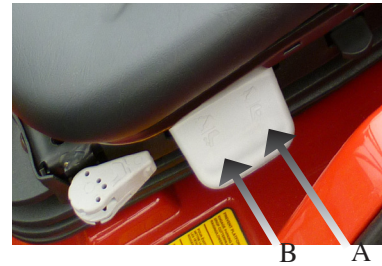


Fig 4



Fig 5

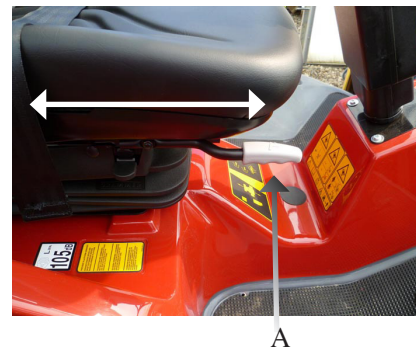


Fig 6



Fig 7

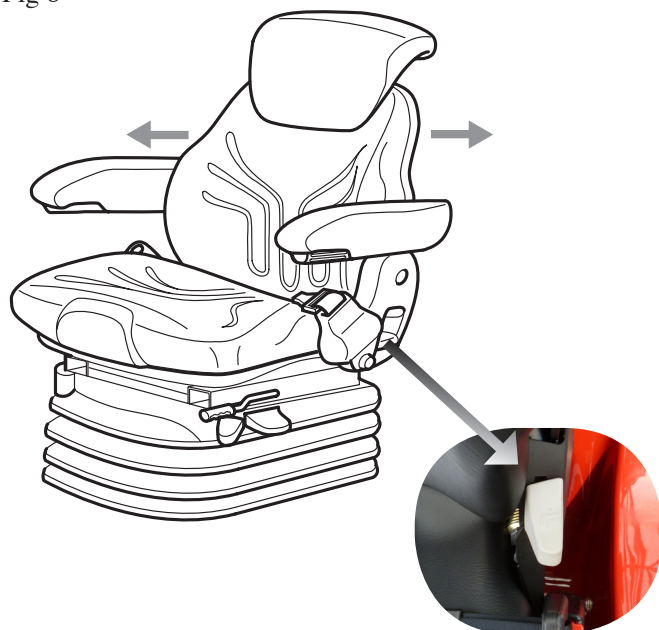


SEAT FUNCTIONS & OPERATION Continued

Backrest adjustment: The backrest is adjusted using the locking lever. Refer to the arrow, Fig 8.

The locking lever must latch into the desired position. It should not be possible to move the backrest into another position when it is locked.


Fig 8



MAINTENANCE

Dirt can impair the function of the seat, so make sure you keep your seat clean!

Upholstery can be quickly and simply removed from the seat frame for easy cleaning, or replacement. Refer to Fig 9.

 Caution: Take care with the backrest frame - it may jerk forward and cause injury!

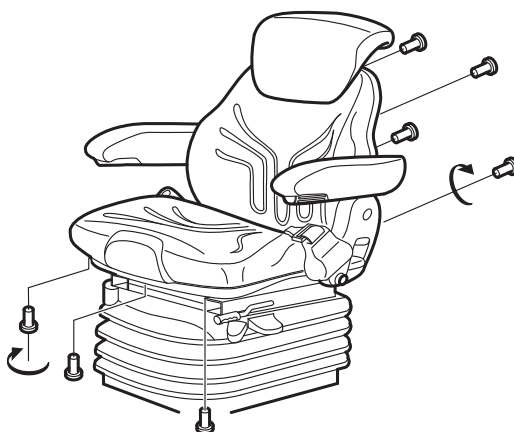
During cleaning the upholstery should not be soaked through.

Use a standard commercially available upholstery or plastics cleaning agent. Test first for compatibility on a small, concealed area.

Every 12 months pull back the rubber skirt and apply a good quality grease to all pivot points and screw threads. Refit the rubber skirt.

There are no serviceable parts on the seat belt. If it shows any signs of damage or malfunction it should be replaced.

Fig 9





The Toro Total Coverage Guarantee

A Limited Warranty

Conditions and Products Covered

The Toro® Company and its affiliate, Toro Warranty Company, pursuant to an agreement between them, jointly warrant your Toro Commercial product ("Product") to be free from defects in materials or workmanship for two years or 1500 operational hours*, whichever occurs first. This warranty is applicable to all products with the exception of Aerators (refer to separate warranty statements for these products). Where a warrantable condition exists, we will repair the Product at no cost to you including diagnostics, labor, parts, and transportation. This warranty begins on the date the Product is delivered to the original retail purchaser.

* Product equipped with an hour meter.

Instructions for Obtaining Warranty Service

You are responsible for notifying the Commercial Products Distributor or Authorized Commercial Products Dealer from whom you purchased the Product as soon as you believe a warrantable condition exists. If you need help locating a Commercial Products Distributor or Authorized Dealer, or if you have questions regarding your warranty rights or responsibilities, you may contact us at:

Commercial Products Service Department
Toro Warranty Company
8111 Lyndale Avenue South
Bloomington, MN 55420-1196
E-mail: commercial.warranty@toro.com

Owner Responsibilities

As the Product owner, you are responsible for required maintenance and adjustments stated in your Operator's Manual. Failure to perform required maintenance and adjustments can be grounds for disallowing a warranty claim.

Items and Conditions Not Covered

Not all product failures or malfunctions that occur during the warranty period are defects in materials or workmanship. This warranty does not cover the following:

- Product failures which result from the use of non-Toro replacement parts, or from installation and use of add-on, or modified non-Toro branded accessories and products. A separate warranty may be provided by the manufacturer of these items.
- Product failures which result from failure to perform recommended maintenance and/or adjustments. Failure to properly maintain your Toro product per the Recommended Maintenance listed in the *Operator's Manual* can result in claims for warranty being denied.
- Product failures which result from operating the Product in an abusive, negligent or reckless manner.
- Parts subject to consumption through use unless found to be defective. Examples of parts which are consumed, or used up, during normal Product operation include, but are not limited to, brakes pads and linings, clutch linings, blades, reels, bed knives, tines, spark plugs, castor wheels, tires, filters, belts, and certain sprayer components such as diaphragms, nozzles, and check valves, etc.

- Failures caused by outside influence. Items considered to be outside influence include, but are not limited to, weather, storage practices, contamination, use of unapproved coolants, lubricants, additives, fertilizers, water, or chemicals, etc.
- Normal noise, vibration, wear and tear, and deterioration.
- Normal "wear and tear" includes, but is not limited to, damage to seats due to wear or abrasion, worn painted surfaces, scratched decals or windows, etc.

Parts

Parts scheduled for replacement as required maintenance are warranted for the period of time up to the scheduled replacement time for that part. Parts replaced under this warranty are covered for the duration of the original product warranty and become the property of Toro. Toro will make the final decision whether to repair any existing part or assembly or replace it. Toro may use remanufactured parts for warranty repairs.

Note Regarding Deep Cycle Battery Warranty:

Deep cycle batteries have a specified total number of kilowatt-hours they can deliver during their lifetime. Operating, recharging, and maintenance techniques can extend or reduce total battery life. As the batteries in this product are consumed, the amount of useful work between charging intervals will slowly decrease until the battery is completely worn out. Replacement of worn out batteries, due to normal consumption, is the responsibility of the product owner. Battery replacement may be required during the normal product warranty period at owner's expense.

Maintenance is at Owner's Expense

Engine tune-up, lubrication cleaning and polishing, replacement of Items and Conditions Not Covered filters, coolant, and completing Recommended Maintenance are some of the normal services Toro products require that are at the owner's expense.

General Conditions

Repair by an Authorized Toro Distributor or Dealer is your sole remedy under this warranty.

Neither The Toro Company nor Toro Warranty Company is liable for indirect, incidental or consequential damages in connection with the use of the Toro Products covered by this warranty, including any cost or expense of providing substitute equipment or service during reasonable periods of malfunction or non-use pending completion of repairs under this warranty. Except for the Emissions warranty referenced below, if applicable, there is no other express warranty.

All implied warranties of merchantability and fitness for use are limited to the duration of this express warranty. Some states do not allow exclusions of incidental or consequential damages, or limitations on how long an implied warranty lasts, so the above exclusions and limitations may not apply to you.

This warranty gives you specific legal rights, and you may also have other rights which vary from state to state.

Countries Other than the United States or Canada

Customers should contact their Toro Distributor (Dealer) to obtain guarantee policies for your country, province, or state. If for any reason you are dissatisfied with your Distributor's service or have difficulty obtaining guarantee information, contact the Toro importer. If all other remedies fail, you may contact us at Toro Warranty Company.

Issued: 17.11.11	Approved:	Mod. No.	Sheet 12 of 12	Part No. 111-5577 (A)
------------------	-----------	----------	----------------	-----------------------