



Form No. 380-0005 Rev A

**Count on it.**

# Parts Catalog

## Super 700 Series Sprinklers

Model No. Super 700 Series



# Ordering Replacement Parts

To order replacement parts, please supply the part number, the quantity, and the description of each part desired.

## Understanding Reference Numbers

Each identified part in an illustration has a reference number. The reference number for a part also appears in the parts list, along with other information about the part.

This catalog uses two special reference number formats, one to indicate parts in a service assembly and another to indicate the quantity of a given part in an illustration.

## Service Assembly Reference Numbers

Parts in service assemblies have reference numbers in the form a:b. The a represents the reference number of the entire service assembly and the b represents a sequential number unique to each part within the service assembly.

For example, a wheel assembly might be identified by reference number 6, the tire by 6:1, the valve by 6:2, and the wheel by 6:3. When you order the assembly identified by reference number 6, you receive all parts identified by reference numbers 6:1, 6:2, and 6:3. However, you may also order any part individually. Reference numbers of this type appear in illustration and in parts lists.

## Reference Numbers Indicating Quantity

In an illustration, if a reference number indicates more than one part, the reference number has the form nX y. The n represents the quantity of the part, the X is the multiplication symbol, and the y represents the reference number.

For example, in an illustration, the reference number 2X 37 means that two of the parts identified by reference number 37 are indicated.

# List of Abbreviations

**AR:** as required

**ASM:** assembly

**BBC:** blade brake control

**BHTF:** button head thread forming

**CARR:** carriage

**CCW:** counter clockwise

**CW:** clockwise

**DEG:** degrees

**DPA:** Dual Point Adjustment

**ECM:** electronic control module

**EXT:** external

**FH:** flat head

**GA:** gauge

**HD:** heavy-duty

**HF:** hex flange

**HH:** hex head

**HHF:** hex head flange

**HHFTF:** hex head flange thread forming

**HJ:** hex jam

**HLH:** hex lag head

**HOC:** height-of-cut

**HSBH:** hex socket button head

**HSFH:** hex socket flat head

**HSH:** hex socket head

**HWH:** hex washer head

**HWHTF:** hex washer head thread forming

**HYD:** hydraulic

**LH:** left hand

**LP:** Liquefied Petroleum Gas

**LPG:** Liquefied Petroleum Gas

**NI:** nylon insert

**NPTF:** national pipe thread fine

**PFH:** phillips flat head

**PPH:** phillips pan head

**PPHTF:** phillips pan head thread forming

**PRH:** phillips round head

**PTH:** phillips truss head

**PTO:** power-take-off

**RH:** right hand

**ROPS:** roll-over protection system

**RRB:** rear roller brush

**SFH:** slotted fillister head

**SHH:** slotted hex head

**SHWH:** slotted hex washer head

**SPH:** slotted pan head

**SQH:** square head

**SRH:** slotted round head

**STD:** standard

**TAP:** self tapping

**TTH:** torx truss head

# Contents

S700 Shrub ..... 4

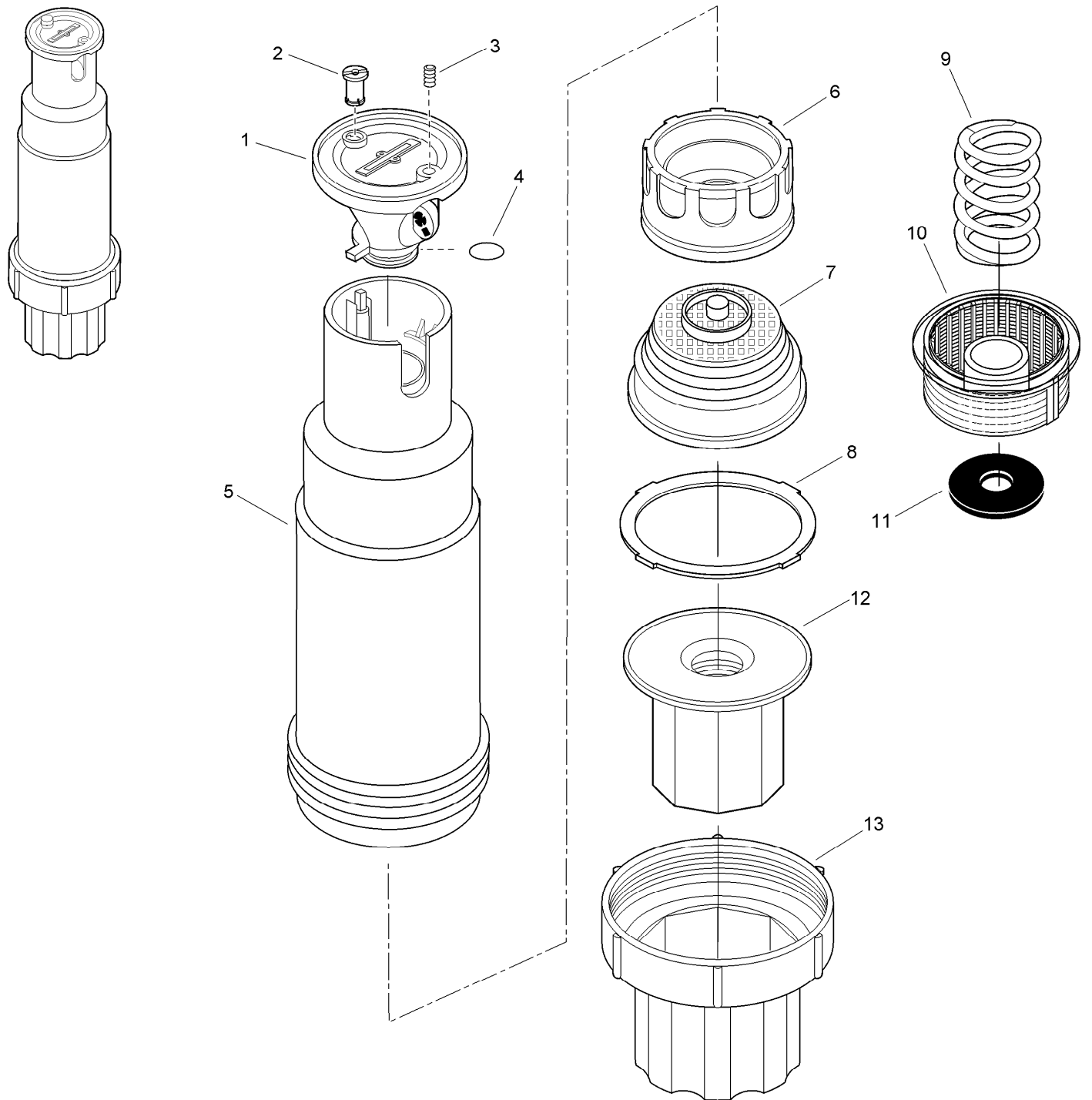
S700 Lawn..... 6

S700 Commercial..... 8

S700 High Pop ..... 10

S700 Nozzles ..... 12

# S700 Shrub



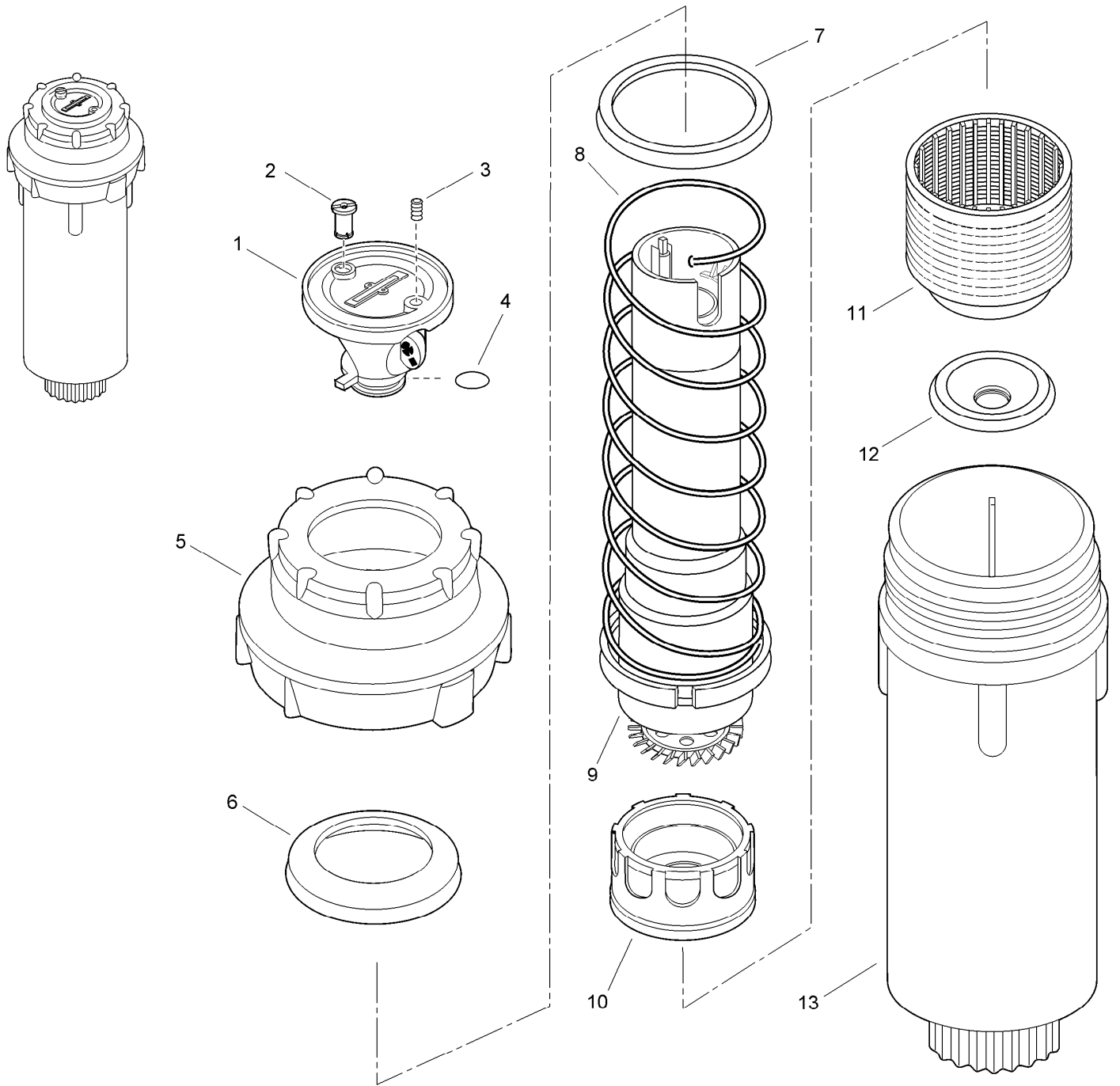
## S700 Shrub (continued)

<i>Ref.</i>	<i>Part Number</i>	<i>Qty.</i>	<i>Description</i>	<i>Ref.</i>	<i>Part Number</i>	<i>Qty.</i>	<i>Description</i>
1		1	Nozzle Assy. (Includes Items 1 4) ■	6	35-6323	1	Stator Assy., Variable ●
2		1	Lock, Nozzle Pin ■	7	89-1161	1	Screen, S700 Shrub ●
3		1	Screw, Set, Half-Dog, 6-32 X 1/4" ■	8	9-5211	1	Seal
4		1	O-Ring, .070" X .426" X .566" (White) ■	9	102-0580	1	Spring, Com ●
5	35-8922	1	Body Assembly ●	10	102-0576	1	Screen, Com ●
				11	89-7561	1	Seal, Check, Com
				12	89-6094	1	Threaded Insert, 3/4" & 1/2"
				13	89-8305	1	Base, Shrub

● No longer available

■ Not serviced separately

# S700 Lawn



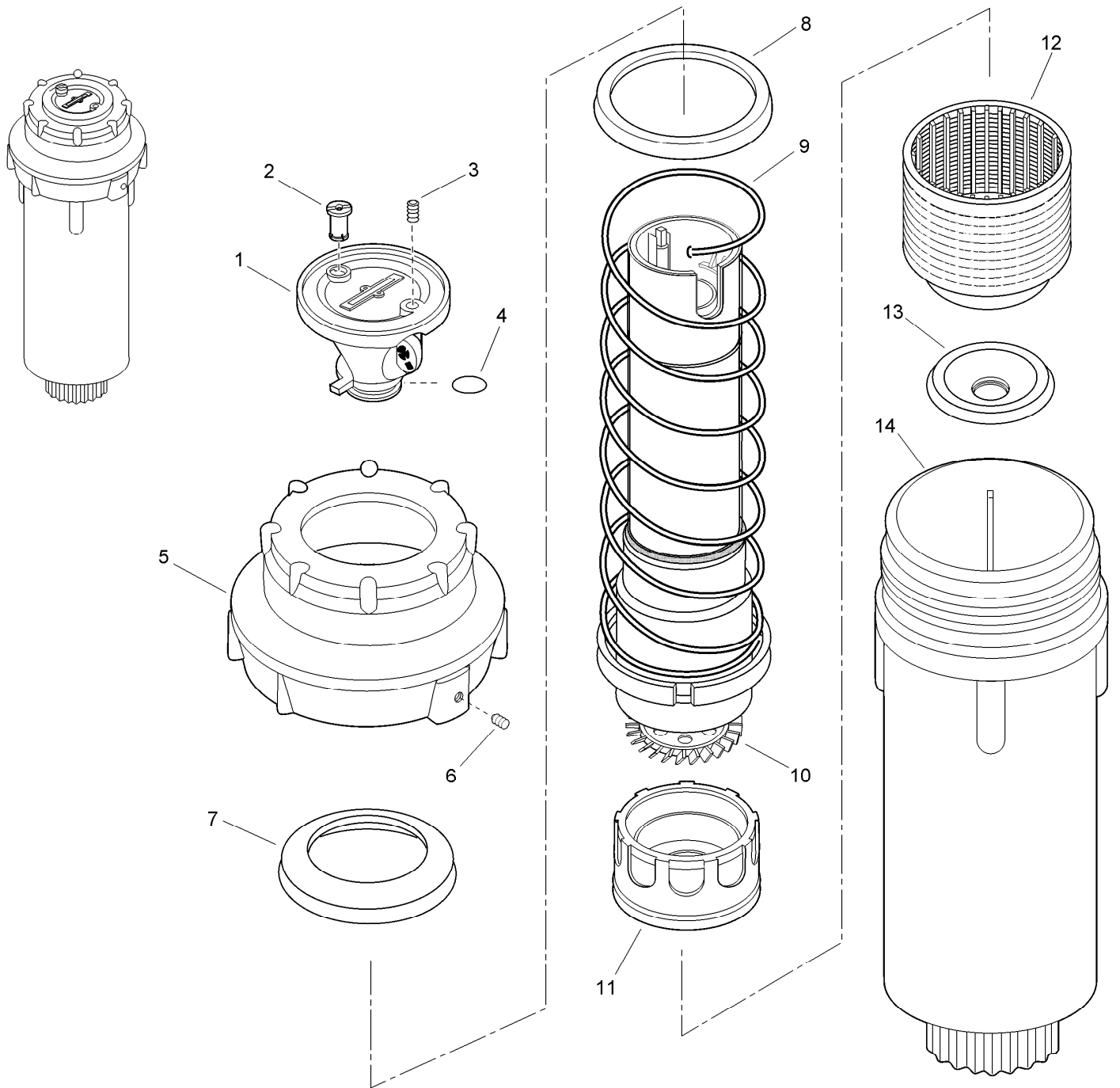
## S700 Lawn (continued)

<i>Ref.</i>	<i>Part Number</i>	<i>Qty.</i>	<i>Description</i>	<i>Ref.</i>	<i>Part Number</i>	<i>Qty.</i>	<i>Description</i>
1		1	Nozzle Assy. (Includes Items 1 4) ♦	10	35-6323	1	Stator Assy., Variable ▲
2		1	Lock, Nozzle Pin ♦	11	9-1691	1	Screen
3		1	Screw, Set, Half-Dog, 6-32 X 1/4" ♦	12	89-0266	1	Check Valve (Com Models Only)
4		1	O-Ring, 0.070" X 0.426" X 0.566" (White) ♦	13	9-1661 89-0323	1	Body ▲ Cover, Nozzle (For Use With Non-Locking Nozzles Only) ● ■
5	35-8962	1	Cap, Lawn		89-0805		Restrictor, Low Pressure ● ■
6	35-3145	1	Seal, Riser		89-3816		Cover, Lavender, Xp300/S600/S700 (Inserts In Top Of Nozzle) ● ■
7	89-0995	1	Sleeve, Spring				
8	35-4508	1	Spring, Retraction ▲				
9	35-8912	1	Riser Assembly ▲				

● SERVICE ITEMS  
▲ No longer available

■ Not illustrated  
♦ Not serviced separately

# S700 Commercial





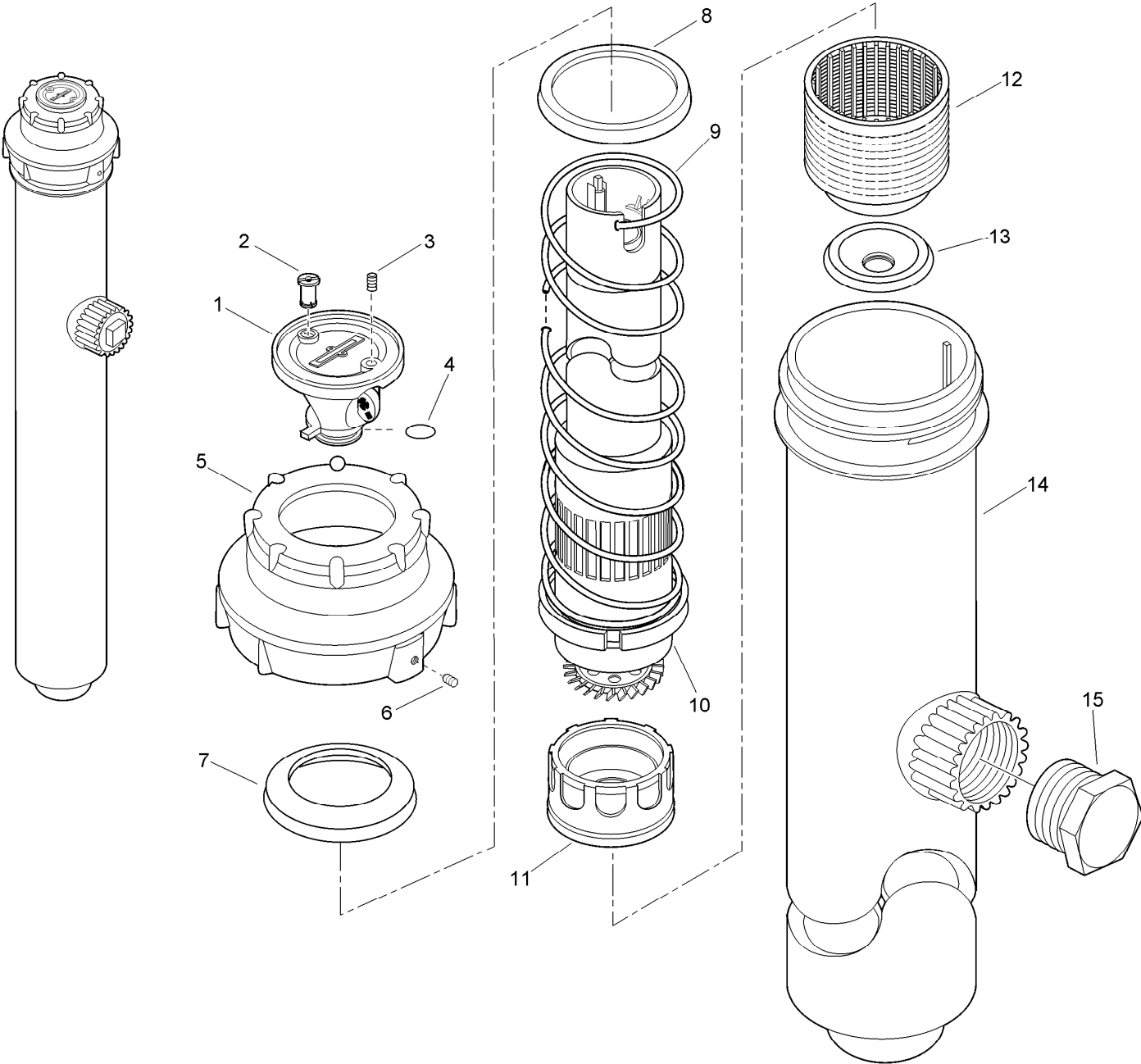
## S700 Commercial (continued)

<i>Ref.</i>	<i>Part Number</i>	<i>Qty.</i>	<i>Description</i>	<i>Ref.</i>	<i>Part Number</i>	<i>Qty.</i>	<i>Description</i>
1		1	Nozzle Assy. (Includes Items 1-4) ♦	11	35-6323	1	Stator Assy., Variable ▲
2		1	Lock, Nozzle Pin ♦	12	9-1691	1	Screen
3		1	Screw, Set, Half-Dog, 6-32 X 1/4" ♦	13	89-0266	1	Check Valve
4			O-Ring, 0.070" X 0.426" X 0.566" (White) ♦	14	9-1661	1	Body ▲
5	35-8963	1	Cap Assy., 700C Locking		89-0323		Cover, Nozzle (For Use With Non-Locking Nozzles Only) ■ ●
6	360-0223	1	Screw-Set, Half-Dog Point, 6-32 X 1/4, El And Pr		89-0805		Restrictor, Low Pressure ■ ●
7	35-8964	1	Seal, Riser (S700C) ▲		89-3816		Cover, Lavender, Xp300/S600/S700 (Inserts In Top Of Nozzle) ■ ●
8	89-0995	1	Sleeve, Spring				
9	89-0122	1	Spring, Retraction ▲				
10	35-8931	1	Riser Assembly (W/ Stainless Steel Sleeve) ▲				

● SERVICE ITEMS  
▲ No longer available

■ Not illustrated  
♦ Not serviced separately

S700 High Pop



## S700 High Pop (continued)

<i>Ref.</i>	<i>Part Number</i>	<i>Qty.</i>	<i>Description</i>	<i>Ref.</i>	<i>Part Number</i>	<i>Qty.</i>	<i>Description</i>
1		1	Nozzle Assy. (Includes Items 1-4) ♦	11	35-6323	1	Stator Assy., Variable ▲
2		1	Lock, Nozzle Pin ♦	12	9-1691	1	Screen
3		1	Screw, Set, Half-Dog, 6-32 X 1/4" ♦	13	89-0266	1	Check Valve
4		1	O-Ring, 0.070" X 0.426" X 0.566" (White) ♦	14	89-1960	1	Body ▲
5	89-0111	1	Cap, 700 Locking	15	363-3779	1	Plug, 3/4" Npt Male ▲
6	360-0223	1	Screw-Set, Half-Dog Point, 6-32 X 1/4, El And Pr		700-10		Kit, Cover, Rubber ●■
7	35-3145	1	Seal, Riser		89-0323		Cover, Nozzle (For Use With Non-Locking Nozzles Only) □■
8	89-0995	1	Sleeve, Spring ▲		89-0805		Restrictor, Low Pressure ●■
9	35-5196	1	Spring, Retraction ▲		89-3816		Cover, Lavender, Xp300/S600/S700 (Inserts In Top Of Nozzle) ●■
10	35-8916	1	Riser Assembly ▲				

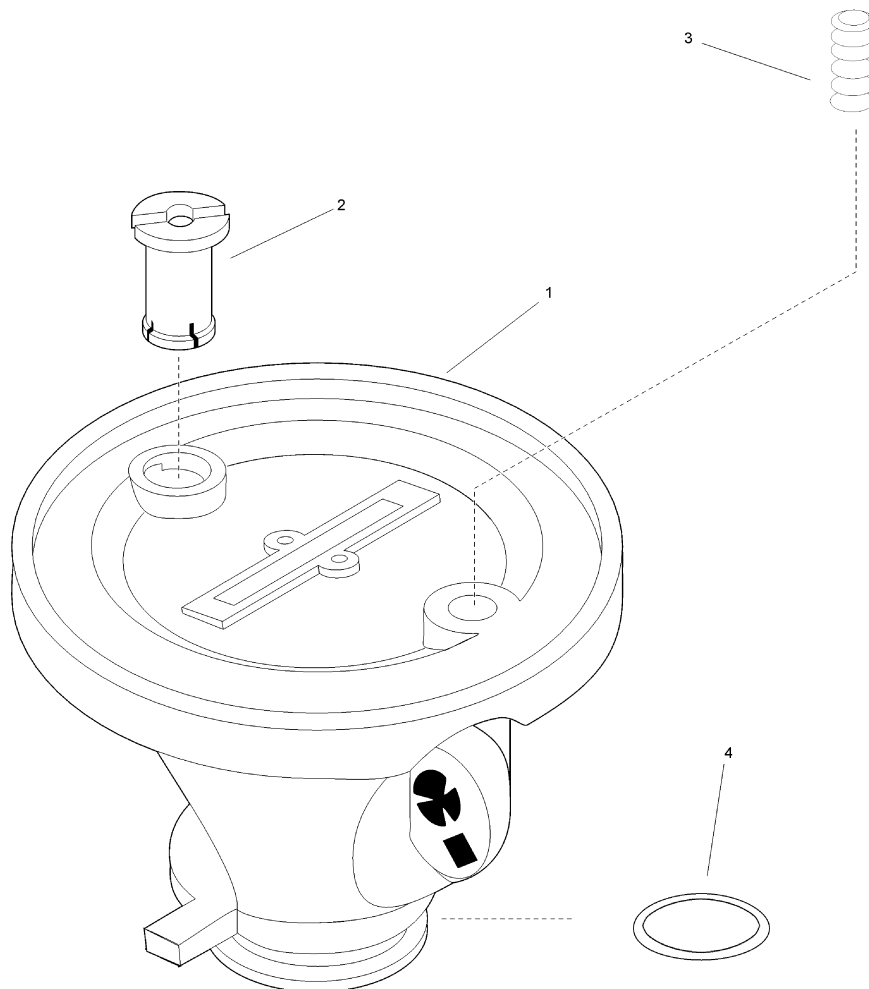
● SERVICE ITEMS

▲ No longer available

□ (See Service Items: Nozzle/Stator Assy.)

■ Not illustrated

♦ Not serviced separately



## S700 Nozzles

Ref.	Part Number	Qty.	Description
1	89-0893L-SK	1	Kit, Nozzle, 1.5, Orange (Includes Items 2-4)
1	89-0894L-SK	1	Kit, Nozzle, 2.0, Red (Includes Items 2-4)
1	89-0895L-SK	1	Kit, Nozzle, 3.0, Black (Includes Items 2-4)
1	89-0896L-SK	1	Kit, Nozzle, 4.5, Blue (Includes Items 2-4)
1	89-0897L-SK	1	Kit, Nozzle, 6.0, Blue (Includes Items 2-4)
2	89-3003	1	Lock, Nozzle Pin, Standard Angle, Black ●
3	360-0223	1	Screw-Set, Half-Dog Point, 6-32 X 1/4, El And Pr
4	360-0494	1	O-Ring (0.070" X 0.426" X 0 .566") Pr And Cr (As568-013)

● Not serviced separately

**Notes:**

**Notes:**

**Notes:**



**Count on it.**