



**Count on it.**

Form No. 380-0006 Rev A

# Parts Catalog

## 2001 and S2001 Series Sprinklers

Model No. 2001 and S2001



# Ordering Replacement Parts

To order replacement parts, please supply the part number, the quantity, and the description of each part desired.

## Understanding Reference Numbers

Each identified part in an illustration has a reference number. The reference number for a part also appears in the parts list, along with other information about the part.

This catalog uses two special reference number formats, one to indicate parts in a service assembly and another to indicate the quantity of a given part in an illustration.

## Service Assembly Reference Numbers

Parts in service assemblies have reference numbers in the form a:b. The a represents the reference number of the entire service assembly and the b represents a sequential number unique to each part within the service assembly.

For example, a wheel assembly might be identified by reference number 6, the tire by 6:1, the valve by 6:2, and the wheel by 6:3. When you order the assembly identified by reference number 6, you receive all parts identified by reference numbers 6:1, 6:2, and 6:3. However, you may also order any part individually. Reference numbers of this type appear in illustration and in parts lists.

## Reference Numbers Indicating Quantity

In an illustration, if a reference number indicates more than one part, the reference number has the form nX y. The n represents the quantity of the part, the X is the multiplication symbol, and the y represents the reference number.

For example, in an illustration, the reference number 2X 37 means that two of the parts identified by reference number 37 are indicated.

# List of Abbreviations

**AR:** as required

**ASM:** assembly

**BBC:** blade brake control

**BHTF:** button head thread forming

**CARR:** carriage

**CCW:** counter clockwise

**CW:** clockwise

**DEG:** degrees

**DPA:** Dual Point Adjustment

**ECM:** electronic control module

**EXT:** external

**FH:** flat head

**GA:** gauge

**HD:** heavy-duty

**HF:** hex flange

**HH:** hex head

**HHF:** hex head flange

**HHFTF:** hex head flange thread forming

**HJ:** hex jam

**HLH:** hex lag head

**HOC:** height-of-cut

**HSBH:** hex socket button head

**HSFH:** hex socket flat head

**HSH:** hex socket head

**HWH:** hex washer head

**HWHTF:** hex washer head thread forming

**HYD:** hydraulic

**LH:** left hand

**LP:** Liquefied Petroleum Gas

**LPG:** Liquefied Petroleum Gas

**NI:** nylon insert

**NPTF:** national pipe thread fine

**PFH:** phillips flat head

**PPH:** phillips pan head

**PPHTF:** phillips pan head thread forming

**PRH:** phillips round head

**PTH:** phillips truss head

**PTO:** power-take-off

**RH:** right hand

**ROPS:** roll-over protection system

**RRB:** rear roller brush

**SFH:** slotted fillister head

**SHH:** slotted hex head

**SHWH:** slotted hex washer head

**SPH:** slotted pan head

**SQH:** square head

**SRH:** slotted round head

**STD:** standard

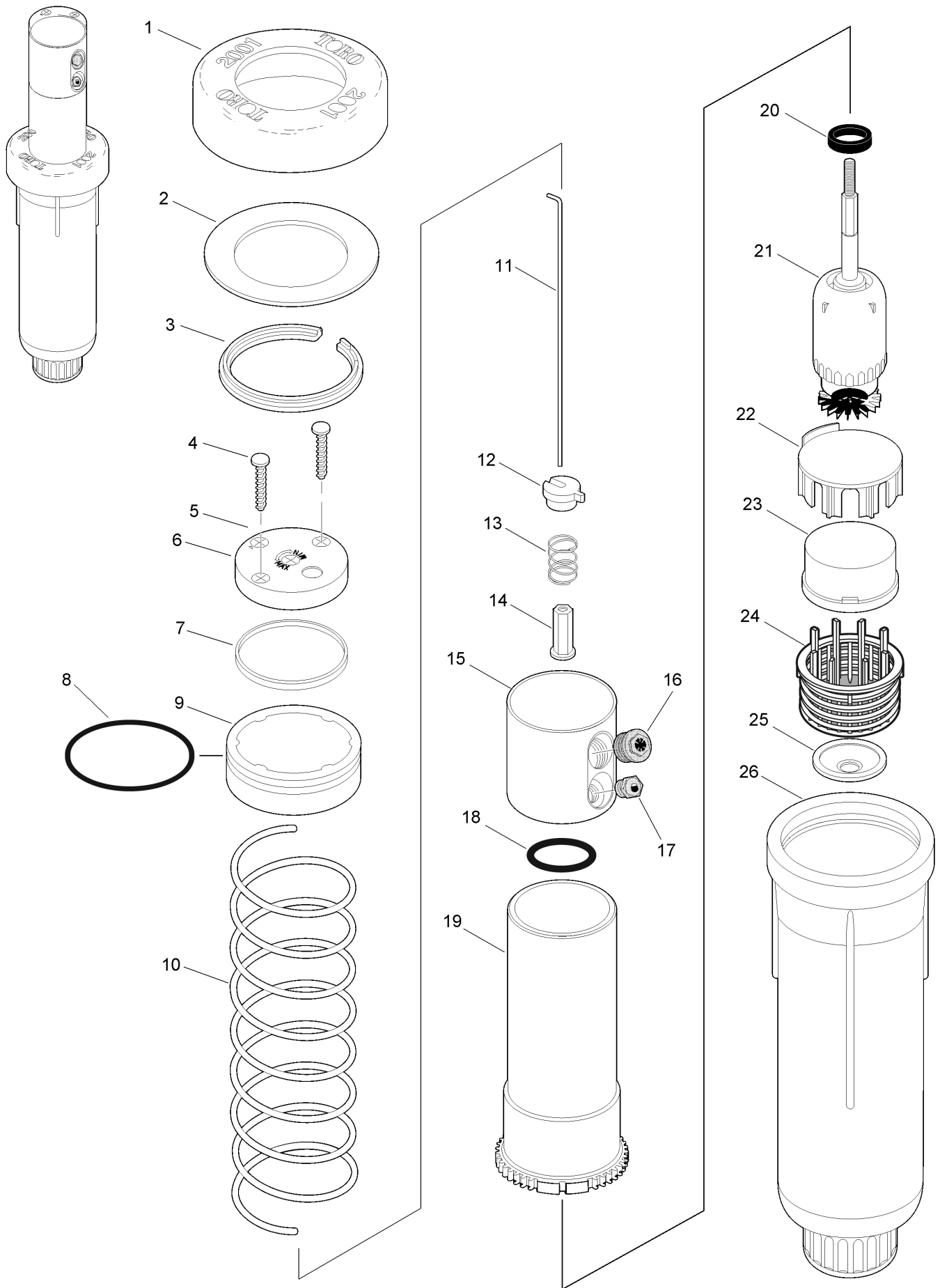
**TAP:** self tapping

**TTH:** torx truss head

# Contents

2001 ..... 4

S2001..... 6



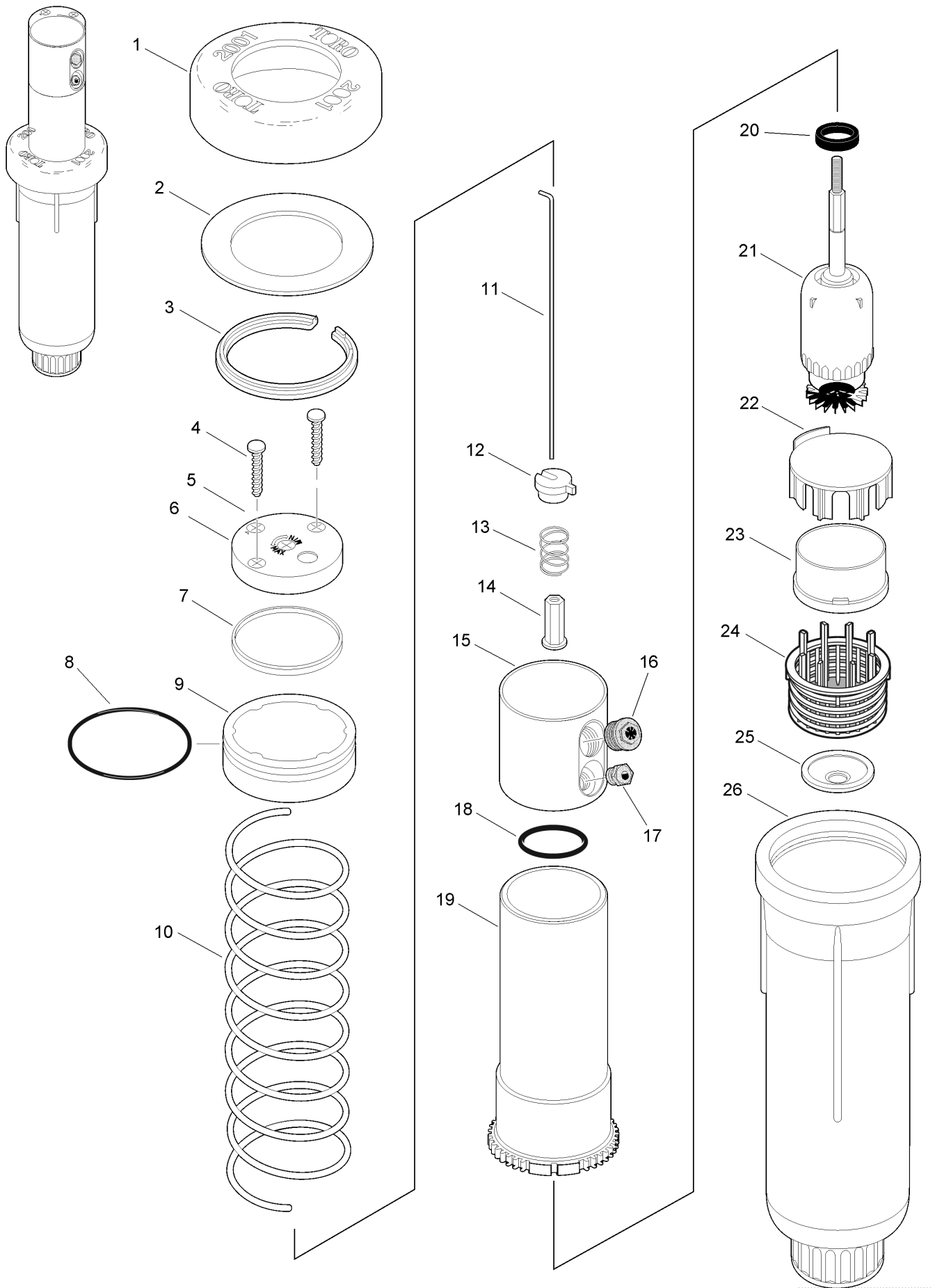
## 2001 (continued)

<i>Ref.</i>	<i>Part Number</i>	<i>Qty.</i>	<i>Description</i>	<i>Ref.</i>	<i>Part Number</i>	<i>Qty.</i>	<i>Description</i>
1	89-3883	1	Cap, Rubber	16	89-8449	1	Nozzle, Main ▲
2	102-0058	1	Seal, Debris	17	89-8283	1	Nozzle, Lower ▲
3	89-3885	1	Snap Ring	18	363-4096	1	O-Ring, #121, 0.103" X 1.049" X 1.255" (Yellow) ▲
4	363-1493	2	Screw, #10 X 1 ▲	19	89-9398	1	Riser
5	360-0530	2	O-Ring, 0.070" X 0.145" X 0.285" ▲	20	89-5904	1	Brake
6	89-3944	1	Nozzle Top Assy., Pc	21	89-8036	1	Gear Drive Assy., 2001
6	89-7295	1	Nozzle Top Assy., Fc	22	89-7374	1	Holder, Stator
6	89-6734	1	Nozzle Top Assy., Pc, Effluent	23		1	Stator (See Service Item 89-8202) ♦
6	89-7296	1	Nozzle Top Assy., Fc, Effluent	24	89-3929	1	Screen
7	89-4887	1	Nozzle Base Retainer	25	35-2245	1	Check Valve ▲
8	363-3690	1	O-Ring, 0.103" X 2.237" X 2.443"	26	89-7392	1	Body Assy., Npt, Left Arc I.D. - Post 5/94
9		1	O-Ring Retainer (See Service Item 89-9913) ♦		89-8202		Stator Assy., 2001 (Includes Item 21 & 22) ●■
10	89-9399	1	Spring ▲		89-9913		O-Ring Retainer Assy., Svc (Includes Items 7 & 8) ●■
11	89-3869	1	Shaft (Pc Pin) ▲		89-6602		Spring Retainer - Pre 4/99 ●■
12	89-4890	1	Arm, Clutch ▲		102-0365		Tree, Nozzle, Colored ●■
13	89-5887	1	Spring, Clutch ▲		89-4717		Adjustment Tool ●■
14	89-3928	1	Nut, Nozzle Base		995-83		Multi-Purpose Tool ●■
15	89-3872	1	Base, Nozzle				

● SERVICE ITEMS  
▲ No longer available

■ Not illustrated  
♦ Not serviced separately

# S2001



## S2001 (continued)

<i>Ref.</i>	<i>Part Number</i>	<i>Qty.</i>	<i>Description</i>	<i>Ref.</i>	<i>Part Number</i>	<i>Qty.</i>	<i>Description</i>
1	89-3883	1	Cap, Rubber	14	89-3928	1	Nut, Nozzle Base
2	102-0058	1	Seal, Debris	15	89-9870	1	Base, Nozzle
3	89-3885	1	Snap Ring	16	89-4769	1	Nozzle, Main ▲
4	363-1493	2	Screw, #10 X 1.0" Phphn, 2 Hlxa ▲	17	89-8660	1	Nozzle, Lower ▲
5	360-0530	2	O-Ring, 0.070" X 0.145" X 0.285" ▲	18	363-4096	1	O-Ring, #121, 0.103" X 1.049" X 1.255" (Yellow) ▲
6	89-3944	1	Nozzle Top Assy., Pc	19	89-9427	1	Riser Assy.
6	89-7295	1	Nozzle Top Assy., Fc	20	89-5904	1	Brake
6	89-6734	1	Nozzle Top Assy., Pc, Effluent	21	89-8036	1	Gear Drive Assy., 2001
6	89-7296	1	Nozzle Top Assy., Fc, Effluent	22	89-7374	1	Holder, Stator
7	89-4887	1	Nozzle Base Retainer	23		1	Stator (See Service Item 89-8202) ♦
8	363-3690	1	O-Ring	24	89-3929	1	Screen
9		1	O-Ring Retainer (See Service Item 89-9914) ♦	25	35-2245	1	Check Valve ▲
10	89-9399	1	Spring ▲	26	89-7393	1	Body Assy., Left Arc I.D. - Post 5/94 ▲
11	89-3869	1	Shaft (Pc Only) ▲		89-8202		Stator Assy., 2001 (Includes Item 21 & 22) ●■
12	89-4890	1	Arm, Clutch (Pc Only) ▲		102-0365		Tree, Nozzle, Colored ●■
13	89-5887	1	Spring, Clutch (Pc Only) ▲		89-4717		Adjustment Tool ●■
					995-83		Multi-Purpose Tool ●■

● SERVICE ITEMS  
▲ No longer available

■ Not illustrated  
♦ Not serviced separately



**Count on it.**