



**Count on it.**

# Parts Catalog

## TR50 and TR50XT Series Sprinklers

Model No. TR50 and TR50XT



# Ordering Replacement Parts

To order replacement parts, please supply the part number, the quantity, and the description of each part desired.

## Understanding Reference Numbers

Each identified part in an illustration has a reference number. The reference number for a part also appears in the parts list, along with other information about the part.

This catalog uses two special reference number formats, one to indicate parts in a service assembly and another to indicate the quantity of a given part in an illustration.

## Service Assembly Reference Numbers

Parts in service assemblies have reference numbers in the form a:b. The a represents the reference number of the entire service assembly and the b represents a sequential number unique to each part within the service assembly.

For example, a wheel assembly might be identified by reference number 6, the tire by 6:1, the valve by 6:2, and the wheel by 6:3. When you order the assembly identified by reference number 6, you receive all parts identified by reference numbers 6:1, 6:2, and 6:3. However, you may also order any part individually. Reference numbers of this type appear in illustration and in parts lists.

## Reference Numbers Indicating Quantity

In an illustration, if a reference number indicates more than one part, the reference number has the form nX y. The n represents the quantity of the part, the X is the multiplication symbol, and the y represents the reference number.

For example, in an illustration, the reference number 2X 37 means that two of the parts identified by reference number 37 are indicated.

# List of Abbreviations

**AR:** as required

**ASM:** assembly

**BBC:** blade brake control

**BHTF:** button head thread forming

**CARR:** carriage

**CCW:** counter clockwise

**CW:** clockwise

**DEG:** degrees

**DPA:** Dual Point Adjustment

**ECM:** electronic control module

**EXT:** external

**FH:** flat head

**GA:** gauge

**HD:** heavy-duty

**HF:** hex flange

**HH:** hex head

**HHF:** hex head flange

**HHFTF:** hex head flange thread forming

**HJ:** hex jam

**HLH:** hex lag head

**HOC:** height-of-cut

**HSBH:** hex socket button head

**HSFH:** hex socket flat head

**HSH:** hex socket head

**HWH:** hex washer head

**HWHTF:** hex washer head thread forming

**HYD:** hydraulic

**LH:** left hand

**LP:** Liquefied Petroleum Gas

**LPG:** Liquefied Petroleum Gas

**NI:** nylon insert

**NPTF:** national pipe thread fine

**PFH:** phillips flat head

**PPH:** phillips pan head

**PPHTF:** phillips pan head thread forming

**PRH:** phillips round head

**PTH:** phillips truss head

**PTO:** power-take-off

**RH:** right hand

**ROPS:** roll-over protection system

**RRB:** rear roller brush

**SFH:** slotted fillister head

**SHH:** slotted hex head

**SHWH:** slotted hex washer head

**SPH:** slotted pan head

**SQH:** square head

**SRH:** slotted round head

**STD:** standard

**TAP:** self tapping

**TTH:** torx truss head

# Contents

TR50 Shrub..... 4

TR50 Lawn ..... 6

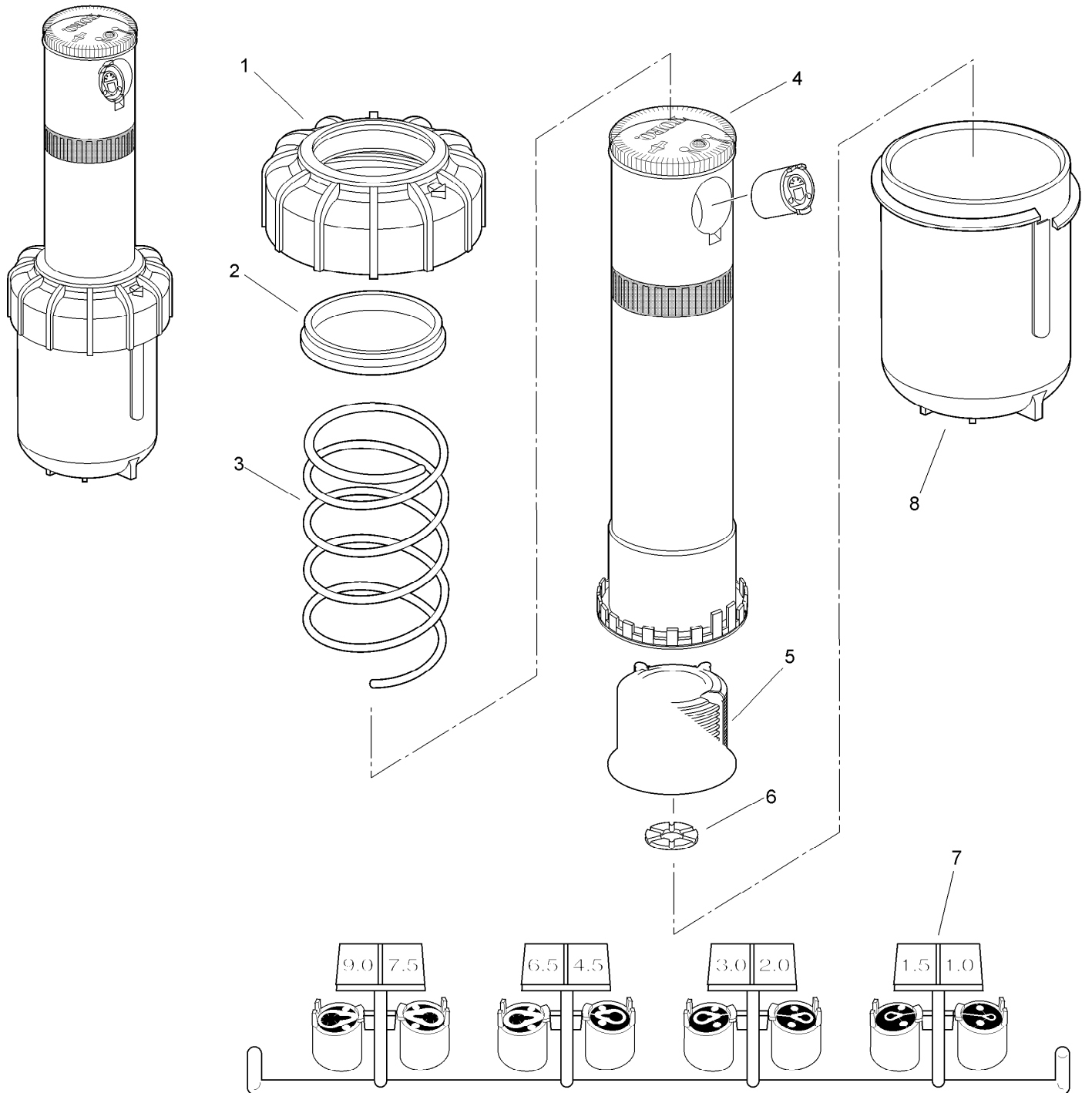
TR50 High-pop..... 8

TR50XT Shrub ..... 10

TR50XT Lawn..... 12

TR50XT High-pop ..... 14

# TR50 Shrub



## TR50 Shrub (continued)

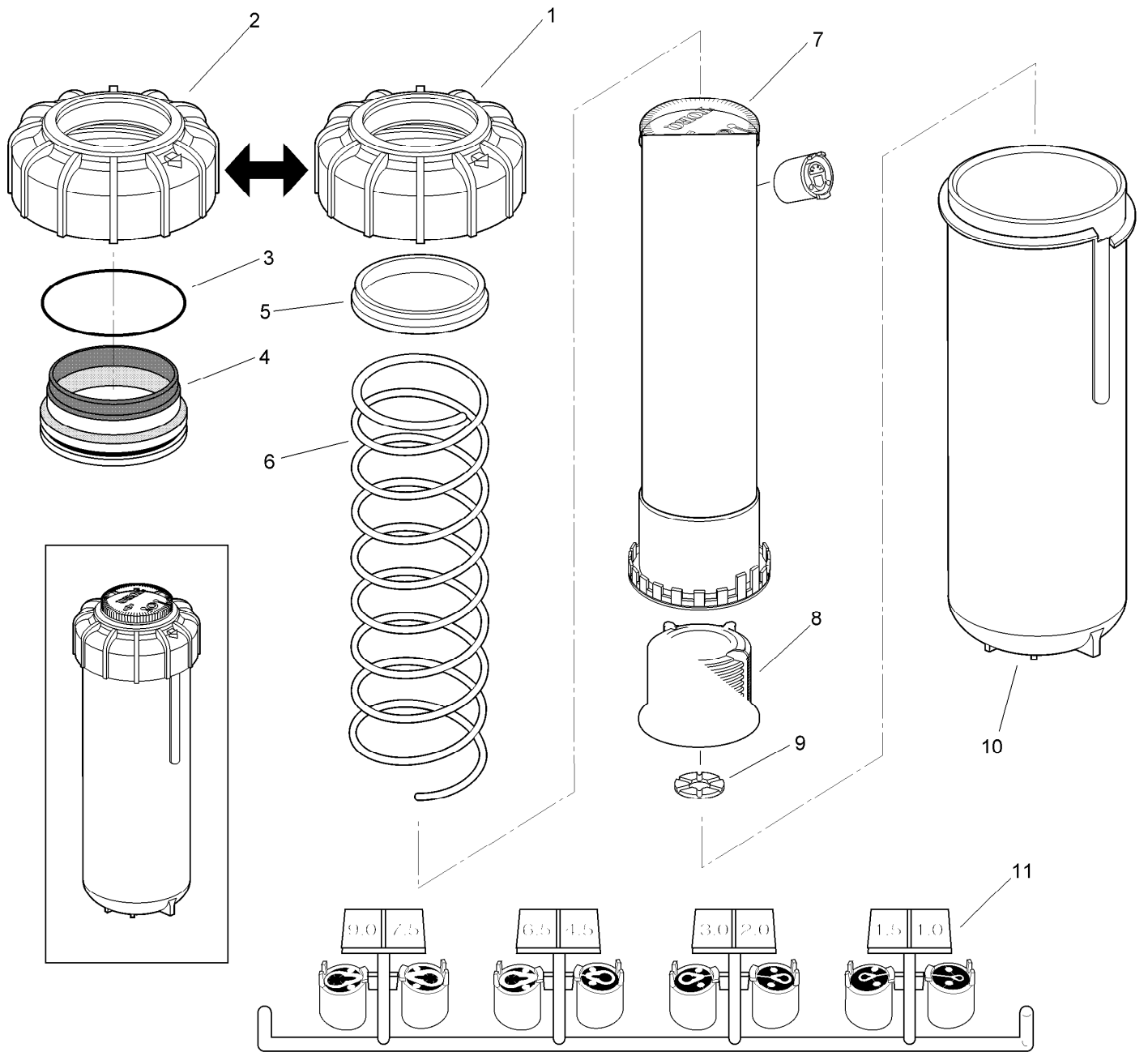
<i>Ref.</i>	<i>Part Number</i>	<i>Qty.</i>	<i>Description</i>
1	89-9178	1	Cap And Seal Assy.
2	89-9713	1	Ring, Retaining
3		1	Spring, Shrub ▲
4		4	Riser Assy. ▲
5	89-9182	1	Screen

<i>Ref.</i>	<i>Part Number</i>	<i>Qty.</i>	<i>Description</i>
6	89-9183	1	Seal, Check
7	102-1877	1	Tree, Nozzle, Low Flow
8	102-1303	1	Body, Shrub ▲ Adjustment Tool ● ■

● SERVICE ITEMS  
▲ Not serviced separately

■ Not illustrated

# TR50 Lawn



## TR50 Lawn (continued)

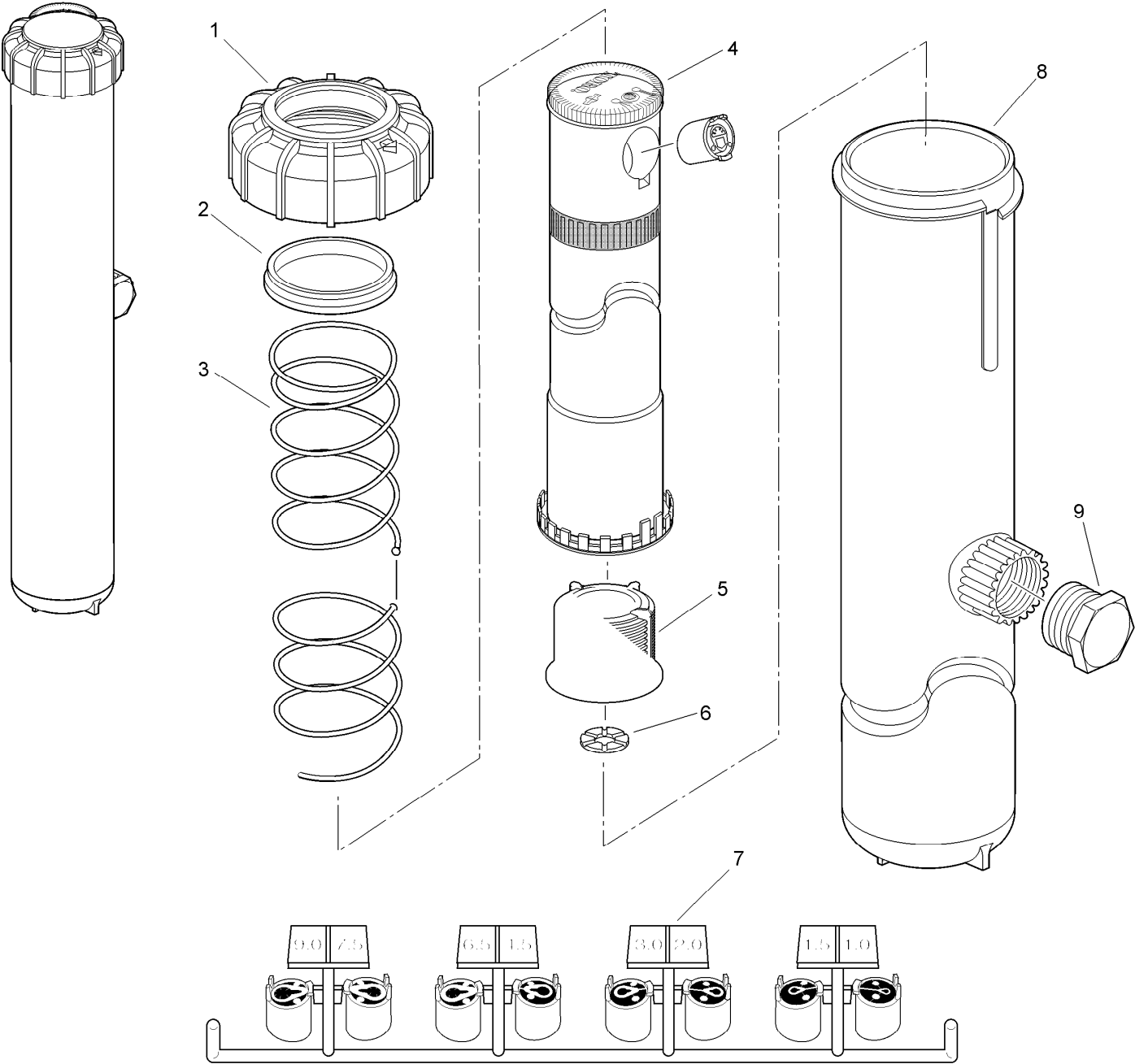
<i>Ref.</i>	<i>Part Number</i>	<i>Qty.</i>	<i>Description</i>
1	89-9178	1	Cap And Seal Assy.
2	102-4660	1	Cap, Stainless Steel Riser
3	363-5611	1	O-Ring, Stainless Steel Riser
4	102-4661	1	Seal W/ Retainer, Stainless Steel Riser
5	89-9713	1	Ring, Retaining

<i>Ref.</i>	<i>Part Number</i>	<i>Qty.</i>	<i>Description</i>
6		1	Spring, Retraction ▲
7		1	Riser Assy. ▲
8	89-9182	1	Screen
9	89-9183	1	Seal, Check
10	89-9176	1	Body
11	102-1877	1	Tree, Nozzle, Low Flow
	102-1303		Adjustment Tool ●■

● SERVICE ITEMS  
▲ Not serviced separately

■ Not illustrated

TR50 High-pop





## TR50 High-pop (continued)

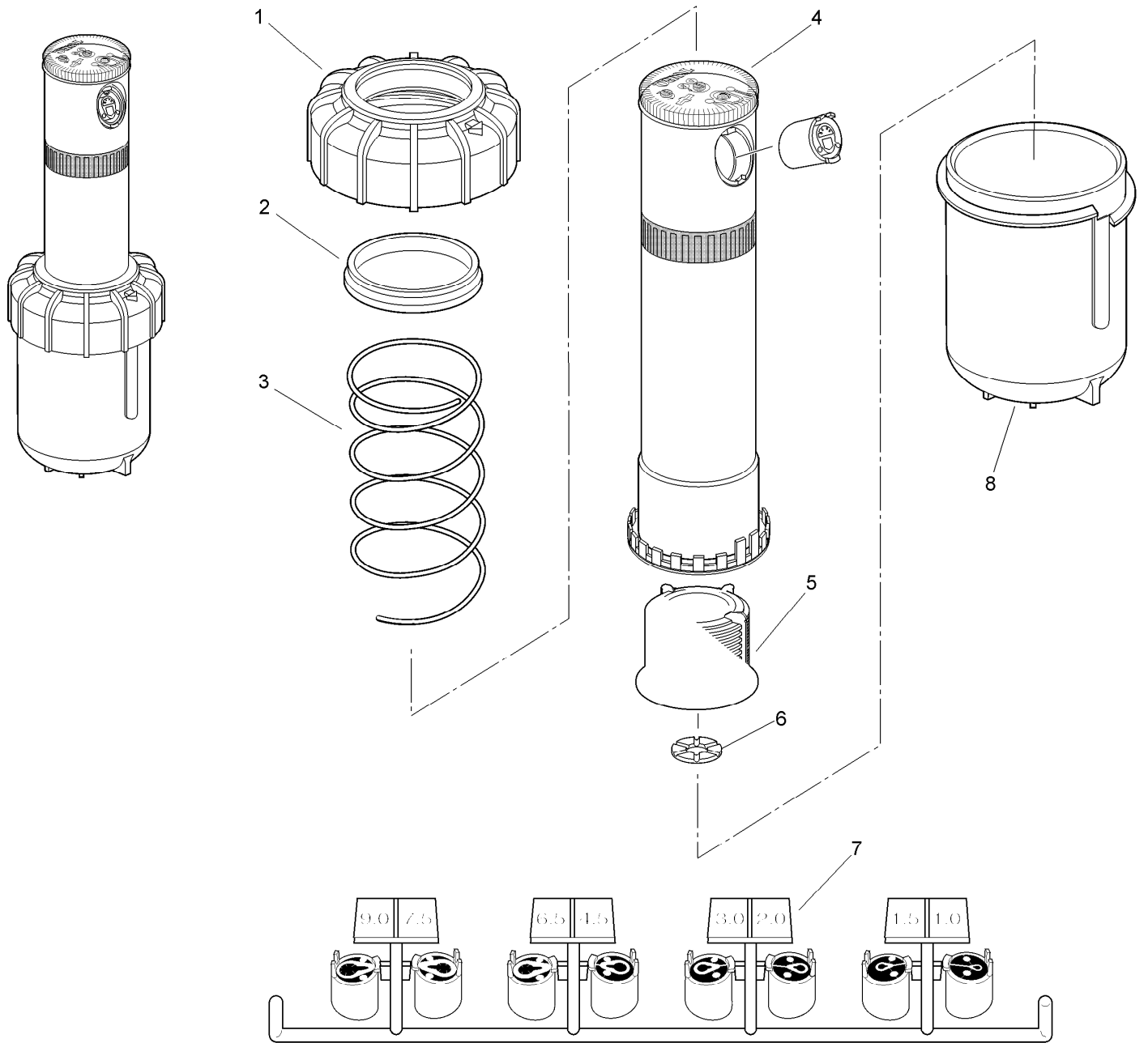
<i>Ref.</i>	<i>Part Number</i>	<i>Qty.</i>	<i>Description</i>
1	89-9178	1	Cap And Seal Assy.
2	89-9713	1	Ring, Retaining
3		1	Spring, Retraction ▲
4		1	Riser Assy. ▲
5	89-9182	1	Screen

<i>Ref.</i>	<i>Part Number</i>	<i>Qty.</i>	<i>Description</i>
6	89-9183	1	Seal, Check
7	102-1877	1	Tree, Nozzle, Low Flow
8		1	Body Assembly ▲
9	363-3779	1	Plug, 3/4" Npt Male
	102-1303		Adjustment Tool ●■

● SERVICE ITEMS  
▲ Not serviced separately

■ Not illustrated

# TR50XT Shrub



## TR50XT Shrub (continued)

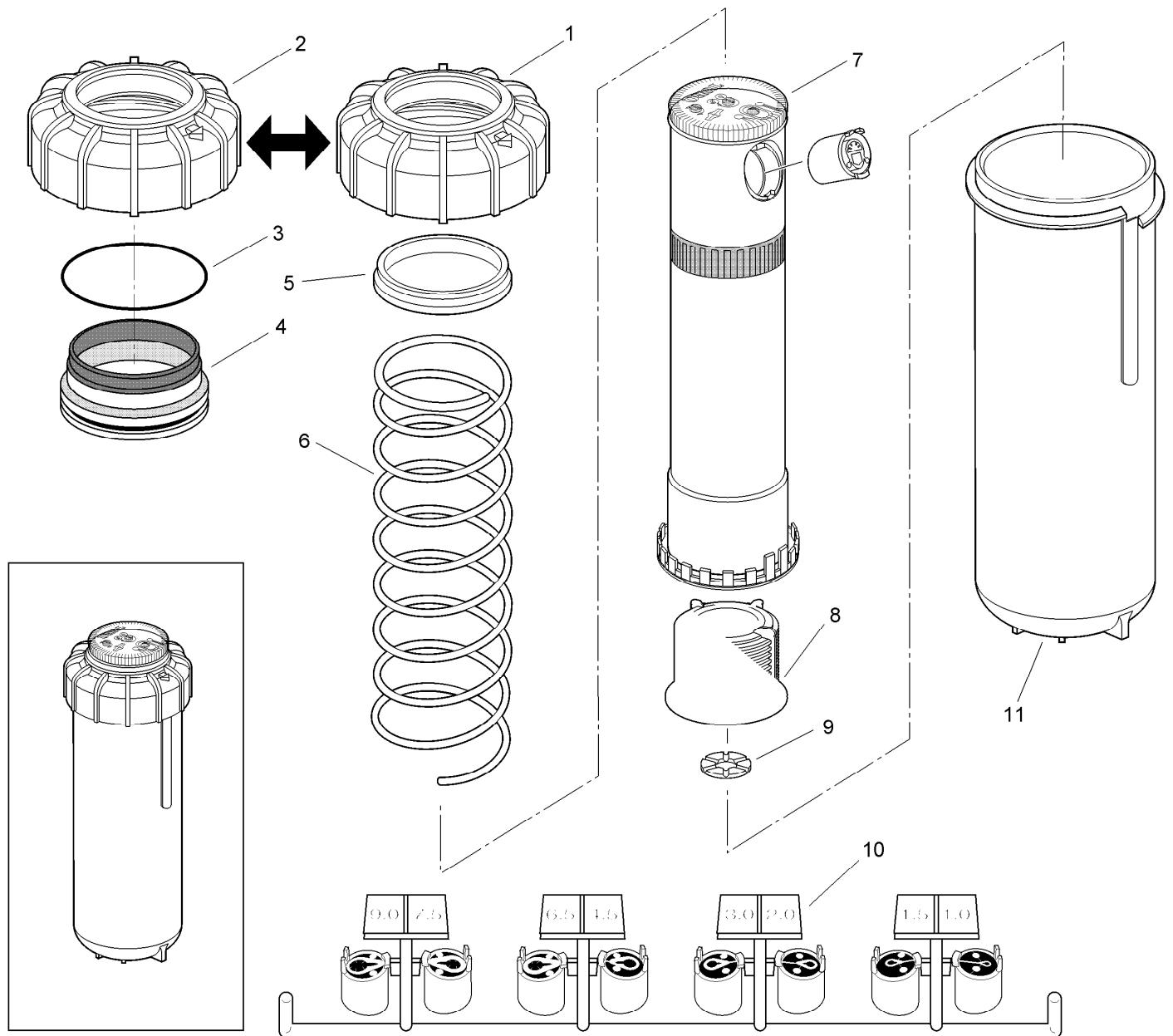
<i>Ref.</i>	<i>Part Number</i>	<i>Qty.</i>	<i>Description</i>
1	89-9178	1	Cap And Seal Assy.
2	89-9713	1	Ring, Retaining
3		1	Spring, Retraction ▲
4		1	Riser Assy. ▲
5	89-9182	1	Screen

<i>Ref.</i>	<i>Part Number</i>	<i>Qty.</i>	<i>Description</i>
6	89-9183	1	Seal, Check
7	102-1877	1	Tree, Nozzle, Low Flow
8	89-9670	1	Body, Shrub
	102-1303		Adjustment Tool ●■

● SERVICE ITEMS  
▲ Not serviced separately

■ Not illustrated

# TR50XT Lawn



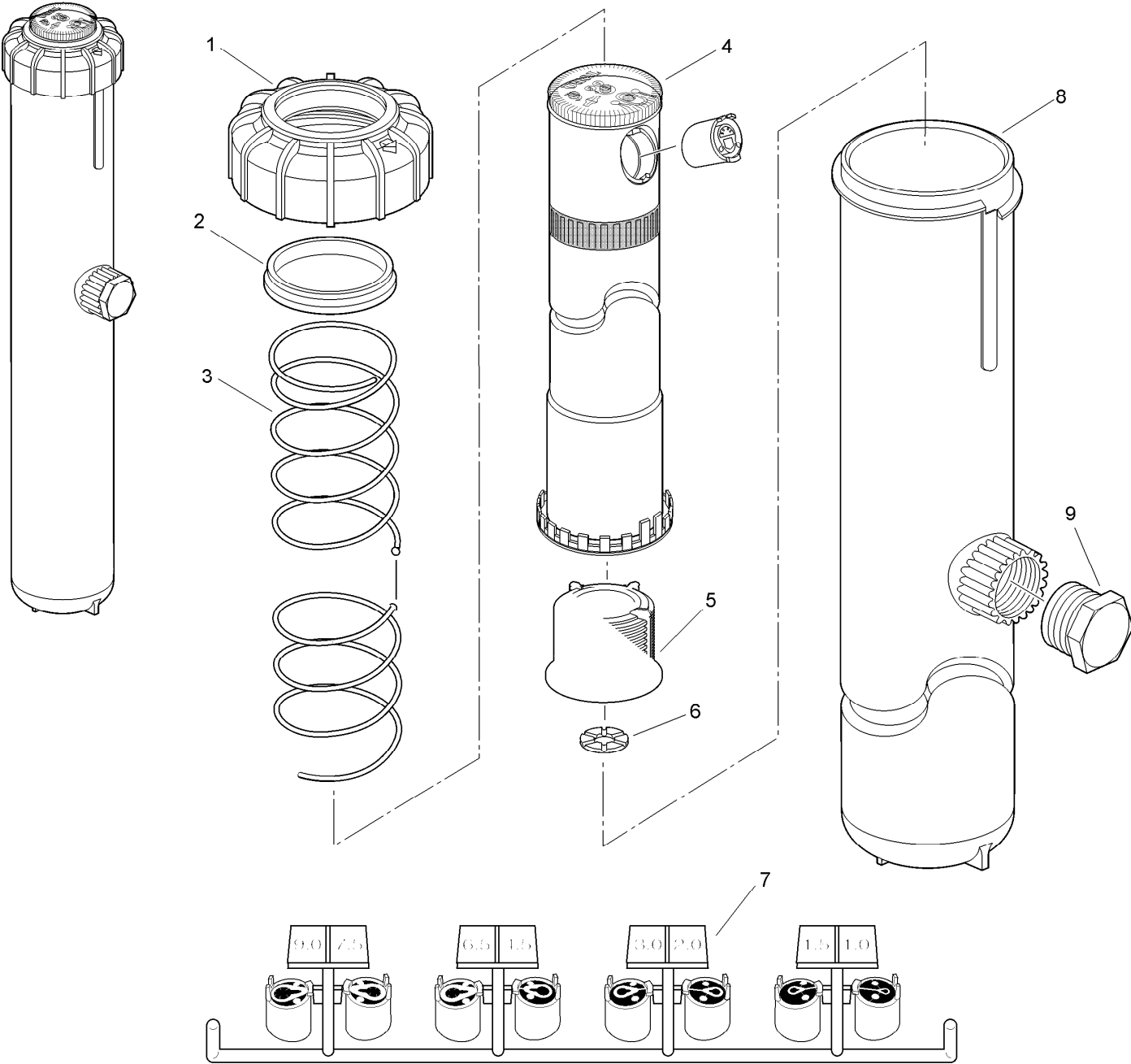
## TR50XT Lawn (continued)

<i>Ref.</i>	<i>Part Number</i>	<i>Qty.</i>	<i>Description</i>	<i>Ref.</i>	<i>Part Number</i>	<i>Qty.</i>	<i>Description</i>
1	89-9178	1	Cap And Seal Assy.	6		1	Spring, Retraction ▲
2	102-4660	1	Cap, Stainless Steel Riser	7		1	Riser Assy. ▲
3	363-5611	1	O-Ring, Stainless Steel Riser	8	89-9182	1	Screen
4	102-4661	1	Seal W/ Retainer, Stainless Steel Riser	9	89-9183	1	Seal, Check
5	89-9713	1	Ring, Retaining	10	102-1877	1	Tree, Nozzle, Low Flow
				11	89-9176	1	Body
					102-1303		Adjustment Tool ●■

● SERVICE ITEMS  
▲ Not serviced separately

■ Not illustrated

TR50XT High-pop



## TR50XT High-pop (continued)

<i>Ref.</i>	<i>Part Number</i>	<i>Qty.</i>	<i>Description</i>	<i>Ref.</i>	<i>Part Number</i>	<i>Qty.</i>	<i>Description</i>
1	89-9178	1	Cap And Seal Assy.	6	89-9183	1	Seal, Check
2	89-9713	1	Ring, Retaining	7	102-1877	1	Tree, Nozzle, Low Flow
3		1	Spring, Retraction ▲	8		1	Body Assy. ▲
4		1	Riser Assy. ▲	9	363-3779	1	Plug, 3/4" Npt Male
5	89-9182	1	Screen		102-1303		Adjustment Tool ●■

● SERVICE ITEMS  
▲ Not serviced separately

■ Not illustrated



**Count on it.**