



**Count on it.**

Form No. 380-0051 Rev A

# Parts Catalog

## CC-P9 through P24 Series Controllers

Model No. CC-P9-P24



# Ordering Replacement Parts

To order replacement parts, please supply the part number, the quantity, and the description of each part desired.

## Understanding Reference Numbers

Each identified part in an illustration has a reference number. The reference number for a part also appears in the parts list, along with other information about the part.

This catalog uses two special reference number formats, one to indicate parts in a service assembly and another to indicate the quantity of a given part in an illustration.

## Service Assembly Reference Numbers

Parts in service assemblies have reference numbers in the form a:b. The a represents the reference number of the entire service assembly and the b represents a sequential number unique to each part within the service assembly.

For example, a wheel assembly might be identified by reference number 6, the tire by 6:1, the valve by 6:2, and the wheel by 6:3. When you order the assembly identified by reference number 6, you receive all parts identified by reference numbers 6:1, 6:2, and 6:3. However, you may also order any part individually. Reference numbers of this type appear in illustration and in parts lists.

## Reference Numbers Indicating Quantity

In an illustration, if a reference number indicates more than one part, the reference number has the form nX y. The n represents the quantity of the part, the X is the multiplication symbol, and the y represents the reference number.

For example, in an illustration, the reference number 2X 37 means that two of the parts identified by reference number 37 are indicated.

# List of Abbreviations

**AR:** as required

**ASM:** assembly

**BBC:** blade brake control

**BHTF:** button head thread forming

**CARR:** carriage

**CCW:** counter clockwise

**CW:** clockwise

**DEG:** degrees

**DPA:** Dual Point Adjustment

**ECM:** electronic control module

**EXT:** external

**FH:** flat head

**GA:** gauge

**HD:** heavy-duty

**HF:** hex flange

**HH:** hex head

**HHF:** hex head flange

**HHFTF:** hex head flange thread forming

**HJ:** hex jam

**HLH:** hex lag head

**HOC:** height-of-cut

**HSBH:** hex socket button head

**HSFH:** hex socket flat head

**HSH:** hex socket head

**HWH:** hex washer head

**HWHTF:** hex washer head thread forming

**HYD:** hydraulic

**LH:** left hand

**LP:** Liquefied Petroleum Gas

**LPG:** Liquefied Petroleum Gas

**NI:** nylon insert

**NPTF:** national pipe thread fine

**PFH:** phillips flat head

**PPH:** phillips pan head

**PPHTF:** phillips pan head thread forming

**PRH:** phillips round head

**PTH:** phillips truss head

**PTO:** power-take-off

**RH:** right hand

**ROPS:** roll-over protection system

**RRB:** rear roller brush

**SFH:** slotted fillister head

**SHH:** slotted hex head

**SHWH:** slotted hex washer head

**SPH:** slotted pan head

**SQH:** square head

**SRH:** slotted round head

**STD:** standard

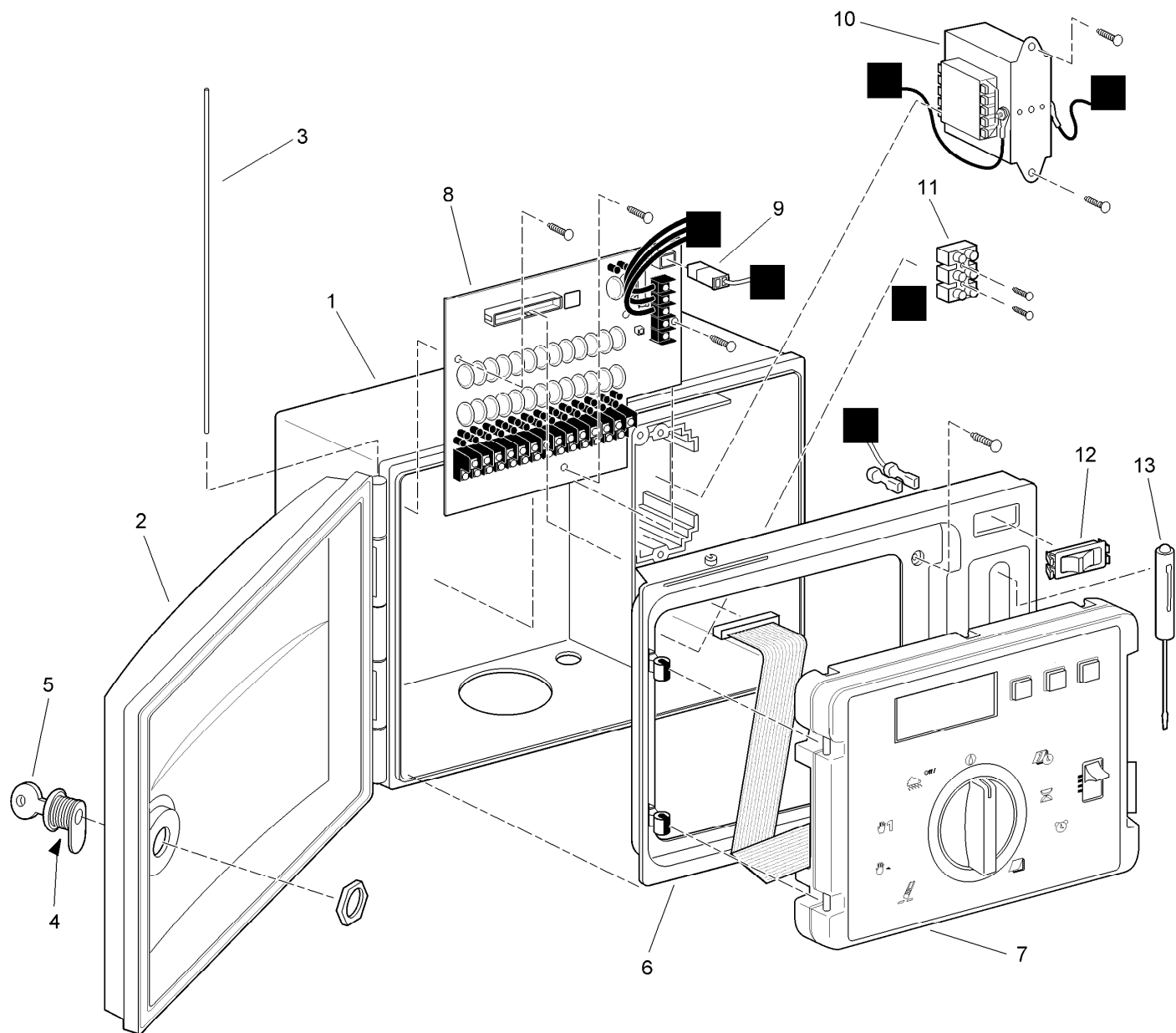
**TAP:** self tapping

**TTH:** torx truss head

# Contents

Custom Command 9 through 24 Station - Plastic ..... 4

# Custom Command 9 through 24 Station - Plastic



## Custom Command 9 through 24 Station - Plastic (continued)

<i>Ref.</i>	<i>Part Number</i>	<i>Qty.</i>	<i>Description</i>	<i>Ref.</i>	<i>Part Number</i>	<i>Qty.</i>	<i>Description</i>
1	89-9641	1	Case, Back, Plastic	8	89-9833	1	Pcb Assy., 9-Station
2	89-9642	1	Cover, Case, Plastic	8	89-9834	1	Surge Board, 12-Station
3	89-9872	1	Pin, Hinge	8	89-9890	1	Surge Board, 15-Station
4	363-3884	1	Lock Assy.	8	89-9891	1	Surge Board, 18-Station
5	360-0565	2	Key	8	89-9892	1	Surge Board, 24-Station
6	89-9643	1	Faceplate	9	1077601	1	Wire Harness
7		1	Timing Mechanism Module, 6-Station ▲	10	89-9624	1	Transformer Assy., 120 V A.C., 50Va
7	102-7804	1	Timing Mechanism Module, 9-Station	10	89-9623	1	Transformer Assy., 220?240 V A.C., 50Va
7	102-7805	1	Timing Mechanism Module, 12-Station	11		1	Terminal Block ▲
7	102-7806	1	Timing Mechanism Module, 15-Station	12	1077501	1	Slide Switch
7	102-7807	1	Timing Mechanism Module, 18-Station	13	363-3885	1	Screwdriver, Toro
7	102-7808	1	Timing Mechanism Module, 24-Station		102-2656		Kit, Service, Surge Board, 12-Station (Export Models Only) ■
8	89-9832	1	Pcb Assy., 6-Station		102-2657		Kit, Service, Surge Board, 24-Station (Export Models Only) ●■

● SERVICE ITEMS  
▲ Not serviced separately

■ Not illustrated

**Notes:**

**Notes:**



**Count on it.**