



Count on it.

Form No. 380-0052 Rev A

Parts Catalog

CC-M12 and CC-M48 Series Controllers

Model No. CC-M12-M48



Ordering Replacement Parts

To order replacement parts, please supply the part number, the quantity, and the description of each part desired.

Understanding Reference Numbers

Each identified part in an illustration has a reference number. The reference number for a part also appears in the parts list, along with other information about the part.

This catalog uses two special reference number formats, one to indicate parts in a service assembly and another to indicate the quantity of a given part in an illustration.

Service Assembly Reference Numbers

Parts in service assemblies have reference numbers in the form a:b. The a represents the reference number of the entire service assembly and the b represents a sequential number unique to each part within the service assembly.

For example, a wheel assembly might be identified by reference number 6, the tire by 6:1, the valve by 6:2, and the wheel by 6:3. When you order the assembly identified by reference number 6, you receive all parts identified by reference numbers 6:1, 6:2, and 6:3. However, you may also order any part individually. Reference numbers of this type appear in illustration and in parts lists.

Reference Numbers Indicating Quantity

In an illustration, if a reference number indicates more than one part, the reference number has the form nX y. The n represents the quantity of the part, the X is the multiplication symbol, and the y represents the reference number.

For example, in an illustration, the reference number 2X 37 means that two of the parts identified by reference number 37 are indicated.

List of Abbreviations

AR: as required

ASM: assembly

BBC: blade brake control

BHTF: button head thread forming

CARR: carriage

CCW: counter clockwise

CW: clockwise

DEG: degrees

DPA: Dual Point Adjustment

ECM: electronic control module

EXT: external

FH: flat head

GA: gauge

HD: heavy-duty

HF: hex flange

HH: hex head

HHF: hex head flange

HHFTF: hex head flange thread forming

HJ: hex jam

HLH: hex lag head

HOC: height-of-cut

HSBH: hex socket button head

HSFH: hex socket flat head

HSH: hex socket head

HWH: hex washer head

HWHTF: hex washer head thread forming

HYD: hydraulic

LH: left hand

LP: Liquefied Petroleum Gas

LPG: Liquefied Petroleum Gas

NI: nylon insert

NPTF: national pipe thread fine

PFH: phillips flat head

PPH: phillips pan head

PPHTF: phillips pan head thread forming

PRH: phillips round head

PTH: phillips truss head

PTO: power-take-off

RH: right hand

ROPS: roll-over protection system

RRB: rear roller brush

SFH: slotted fillister head

SHH: slotted hex head

SHWH: slotted hex washer head

SPH: slotted pan head

SQH: square head

SRH: slotted round head

STD: standard

TAP: self tapping

TTH: torx truss head

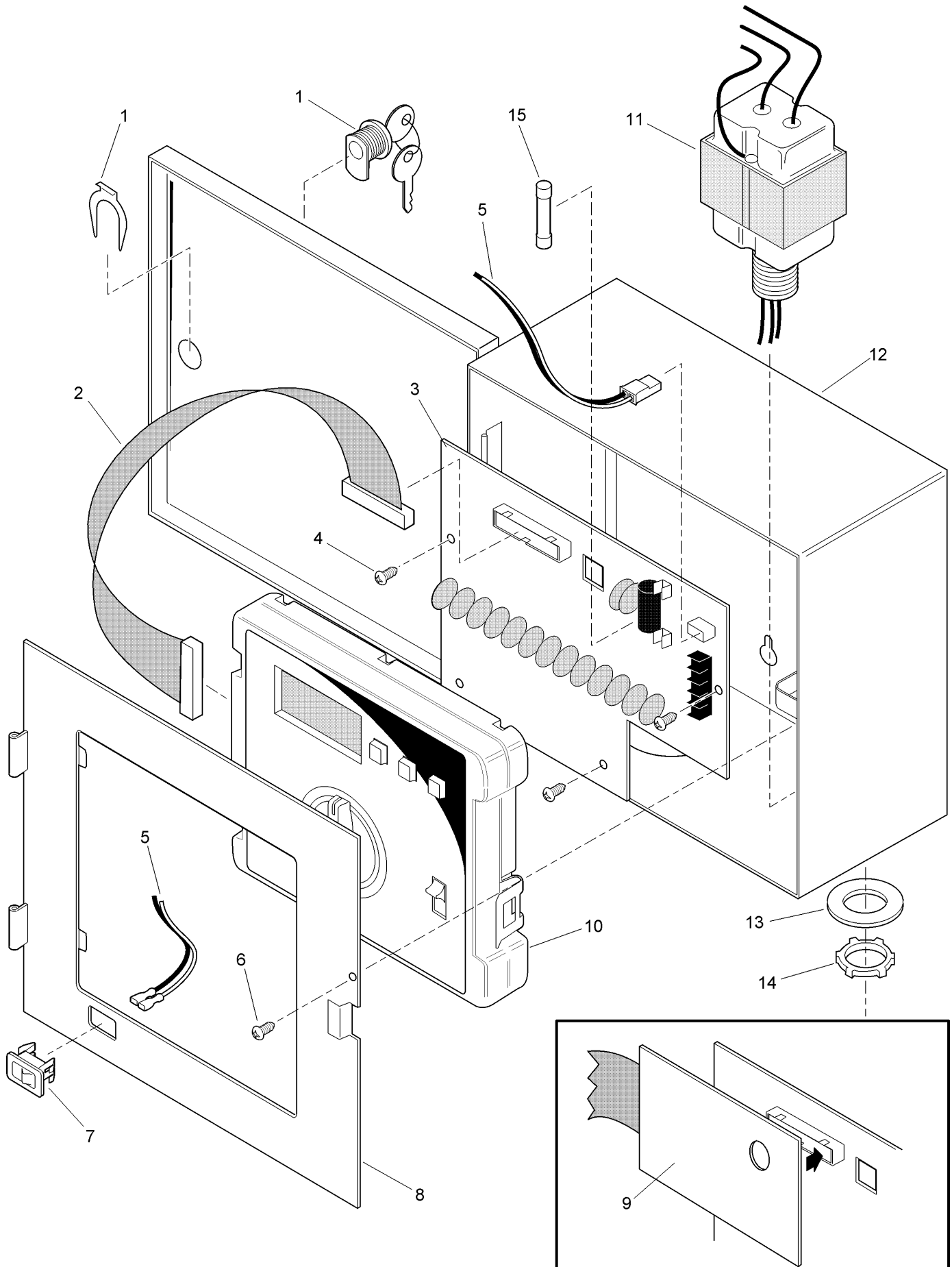
Contents

Custom Command 12-24 Station - Metal Cabinet 4

Custom Command 36 and 48 Stn - Metal Cabinet 6

Custom Command 48 Station 8

Custom Command 12-24 Station - Metal Cabinet



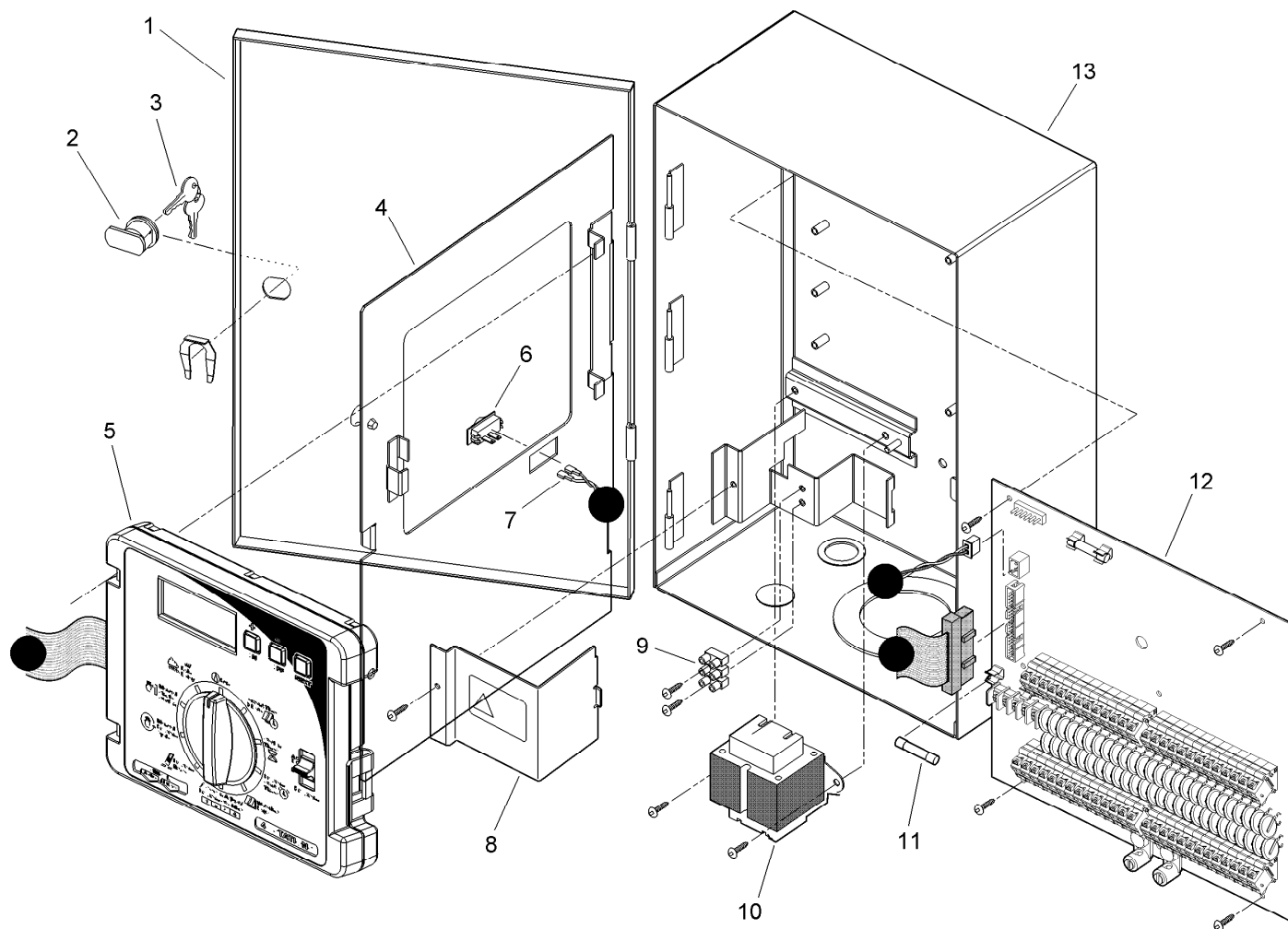
Custom Command 12-24 Station - Metal Cabinet (continued)

<i>Ref.</i>	<i>Part Number</i>	<i>Qty.</i>	<i>Description</i>	<i>Ref.</i>	<i>Part Number</i>	<i>Qty.</i>	<i>Description</i>
1	363-3785	1	Lock Assy. W/Keys	10	102-7808	1	Timing Mechanism Module, 24-Station
2	1073302	1	Cable Harness	11	615901-H	1	Transformer, 120 V A.C.
3	89-9834	1	Surge Board, 12-Station	12	1080101	1	Case Assy., Metal (120 V A.C. Models Only)
3	89-9890	1	Surge Board, 15-Station	13	657401	1	Washer
3	89-9891	1	Surge Board, 18-Station	14	8619	1	Nut, Conduit, 1/2 Inch
3	89-9892	1	Surge Board, 24-Station	15	102-3406	1	Fuse, 2 Amp , Slow-Blow (10-Pack)
4			Screw ▲		102-2656	1	Kit, Service, Surge Board, 12-Station (Export Models Only) ●■
5	1077601	1	Wire Harness		102-2657	1	Kit, Service, Surge Board, 24-Station (Export Models Only) ●■
6			Screw ▲		R89-9255		Kit, Transformer, 220 V A.C. 50 Hz, 50 Va (Export Models Only) ●■
7	1077501	1	Slide Switch				
8	89-9175	1	Panel, Mounting				
9	89-9159	1	Pct Connector To Terminal Board				
10	102-7805	1	Timing Mechanism Module, 12-Station				
10	102-7806	1	Timing Mechanism Module, 15-Station				
10	102-7807	1	Timing Mechanism Module, 18-Station				

● SERVICE ITEMS
▲ Not serviced separately

■ Not illustrated

Custom Command 36 and 48 Stn - Metal Cabinet

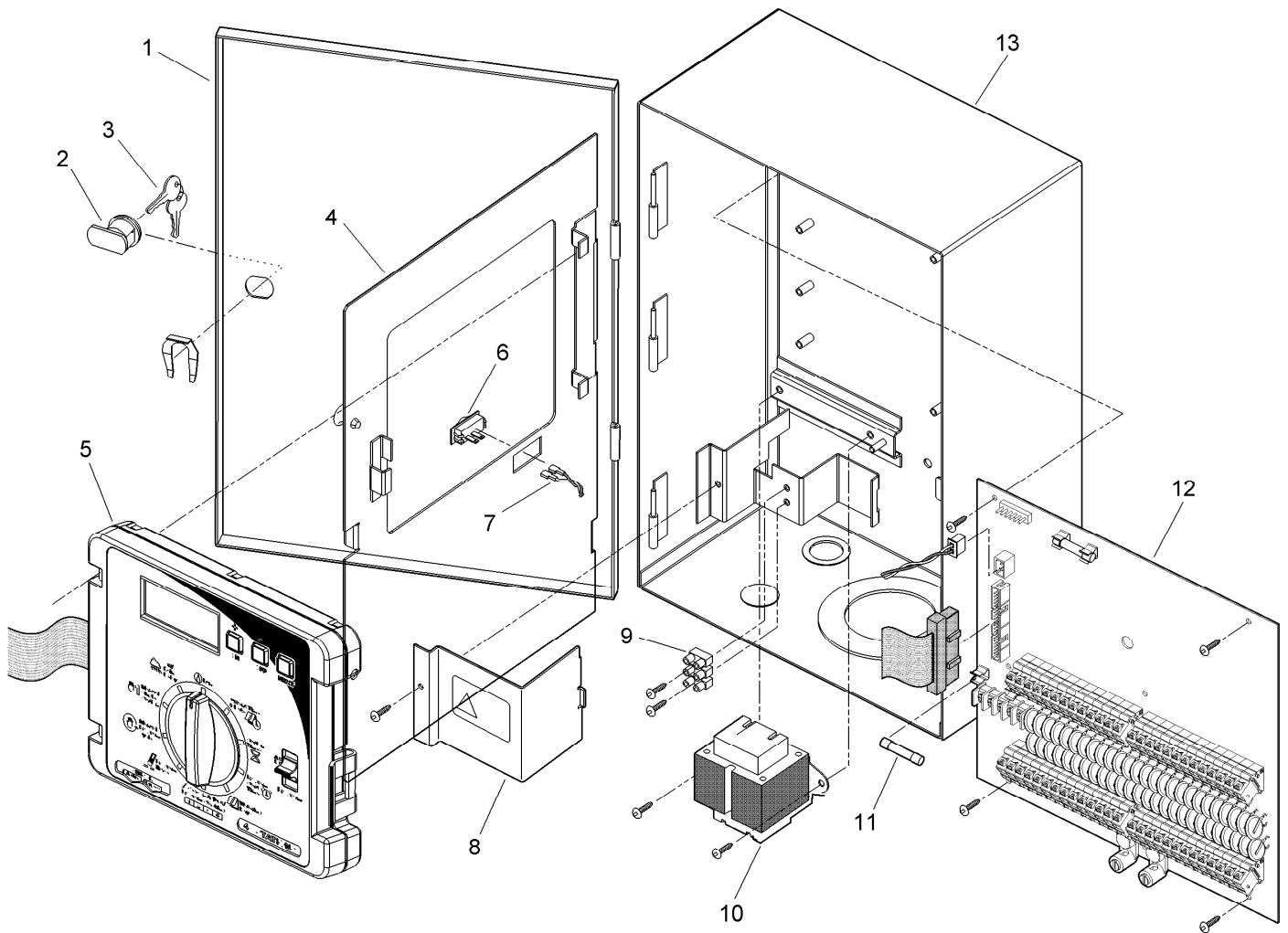


Custom Command 36 and 48 Stn - Metal Cabinet (continued)

<i>Ref.</i>	<i>Part Number</i>	<i>Qty.</i>	<i>Description</i>	<i>Ref.</i>	<i>Part Number</i>	<i>Qty.</i>	<i>Description</i>
1	102-3527	1	Cover, Outer Door (Includes Items 2 & 3)	9		1	Terminal Block, 3-Position ●
2	102-3529	1	Lockset (Includes Item 3)	10	102-3534	1	Transformer, 120 V A.C., 60 Hz (Domestic Model)
3	360-0565	1	Keys, 2 With Ring	10	R89-9255	1	Kit, Transformer, 220 V A.C. 50 Hz, 50 Va (International Model)
4	102-3528	1	Cover, Inner Door	11	102-3406	2	Fuse, 2 Amp , Slow-Blow (10-Pack)
5	102-3530	1	Timing Mechanism Module, 36-Station	12	102-3532	1	Output Board, 36-Station
5	102-3531	1	Timing Mechanism Module, 48-Station	12	102-3533	1	Output Board, 48-Station
6	1077501	1	Slide Switch	13	102-3537	1	Rear Case (Includes Items 7 & 8)
7	1077601	1	Wire Harness				
8	102-3535	1	Cover, Power Supply				

● Not serviced separately

Custom Command 48 Station



Custom Command 48 Station (continued)

<i>Ref.</i>	<i>Part Number</i>	<i>Qty.</i>	<i>Description</i>	<i>Ref.</i>	<i>Part Number</i>	<i>Qty.</i>	<i>Description</i>
1	102-3527	1	Cover, Outer Door (Includes Items 2 And 3)	9		1	Terminal Block, 3-Position ●
2	102-3529	1	Lockset (Includes Item 3)	10	102-3534	1	Transformer, 120 V A.C., 60 Hz (Domestic Model)
3	360-0565	1	Keys, 2 W/Ring	10	R89-9255	1	Transformer, 220 V A.C., 50 Hz (International Model)
4	102-3528	1	Cover, Inner Door	11	102-3406	2	Fuse, 2 Amp, 250V, Slow-Blow (10-Pack)
5	102-3531	1	Timing Mechanism Module, 48-Station	12	102-3533	1	Output Board, 48-Station
6	1077501	1	Slide Switch	13	102-3537	1	Rear Case (Includes Items 7 And 8)
7	1077601	1	Cable Assembly				
8	102-3535	1	Cover, Power Supply				

● Not serviced separately

Notes:

Notes:



Count on it.