



Handlebar Extension Kit

HoverPro 450/500/550

Model No. 02623

Form No. 3371-527 Rev B

Installation Instructions

Safety

The handlebar extension kit provides additional length to the handlebars, allowing for easier mowing on slopes and similar terrain.

- Before using this kit, refer to the HoverPro *Operator's Manual* safety section.
- Use care when maneuvering the machine. The longer handle may make maneuvering more difficult.
- Be careful when moving or storing the unit to prevent the latching mechanism from breaking.

Installation

1. Remove the throttle control from the handlebar. Retain the mounting fasteners (Figure 1). Loosen the throttle control cable clamp on the engine, remove the outer cable from the clamp, and remove the inner cable from the lever (Figure 3).
2. Remove the 2 handwheels and the 2 U-bolts to disassemble the HoverPro's upper handlebar from the lower handlebar. Retain the handwheels and U-bolts.
3. Secure the handlebar extension to the lower handlebar using 2 handwheels and 2 U-bolts (Figure 1).

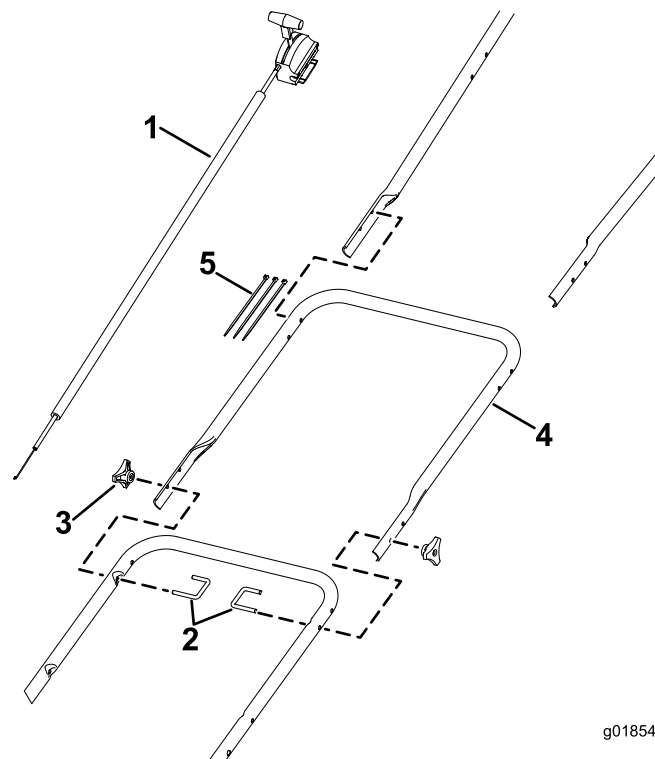
Vibration

Measured vibration level for the left hand = 7.7 m/s^2 (model 02602); 4.0 m/s^2 (model 02604); 6.8 m/s^2 (model 02606).

Measured vibration level for the right hand = 6.4 m/s^2 (model 02602); 5.3 m/s^2 (model 02604); 4.6 m/s^2 (model 02606).

Uncertainty Value (K) = 3.5 m/s^2 (model 02602); 2.5 m/s^2 (model 02604); 3.0 m/s^2 (model 02606).

The vibration levels of model 02602 was measured to standard EN14910. The vibration levels of models 02604 and 02606 were measured to standard EN836.



g018541

Figure 1

- | | |
|----------------------------------|----------------------------|
| 1. Throttle control assembly (1) | 4. Handlebar extension (1) |
| 2. U-bolt (2) | 5. Cable tie (3) |
| 3. Handwheel (2) | |



4. Secure the upper handlebar to the handlebar extension using the 2 handwheels and 2 U-bolts you removed in step 2 (Figure 1).
5. Use the mounting fasteners you removed in step 1 to secure the longer throttle control to the upper handlebar. Secure the control assembly to the handlebars using 3 cable ties (Figure 1).
6. Hook the dogend into the lever, then pull the brake control cable taut and slide it into the bracket (Figure 2).

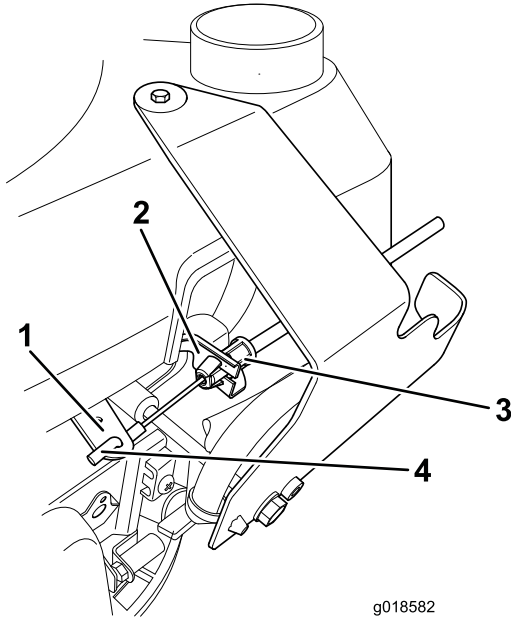


Figure 2

- | | |
|------------|------------------------|
| 1. Lever | 3. Brake control cable |
| 2. Bracket | 4. Dogend |

7. Set the throttle control to start (Figure 3).

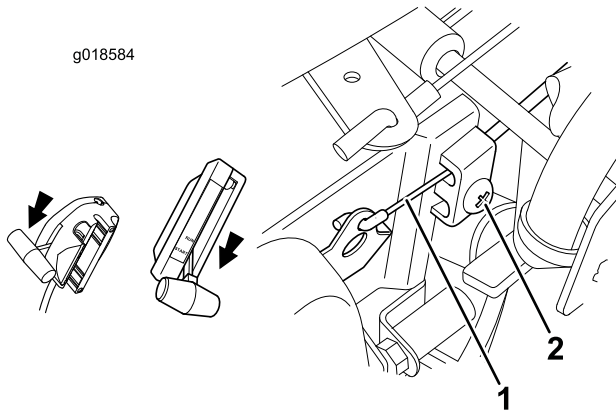


Figure 3

- | | |
|-------------------|----------|
| 1. Throttle cable | 2. Screw |
|-------------------|----------|

8. Push the lever to the full lock position (Figure 4).

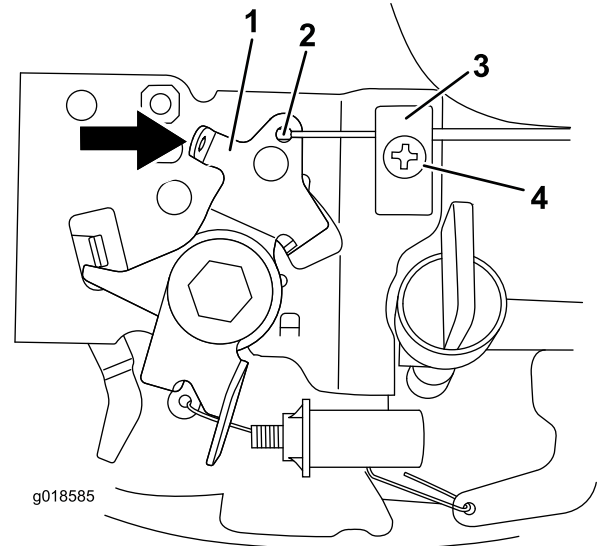


Figure 4

- | | |
|-----------|------------|
| 1. Lever | 3. Bracket |
| 2. Dogend | 4. Screw |

9. Hook the dogend into the lever, then pull the throttle cable taught and tighten the screw (Figure 4).

Note: Ensure that the cables do not become snagged when folding the handlebars.

10. Pass the engine break cable (Figure 2) through the throttle control unit and up into the bail arm.
11. Secure both cables with the supplied cable ties to the handlebar upper and lower sections.

Refer to the HoverPro *Operator's Manual* for the operation of the throttle control and engine stop control.