



Form No. 3363-291 Rev E

Count on it.

Parts Catalog

50cm Mulching/Rear Bagging Lawn Mower

Model No. 29639—Serial No. 310000001 and Up



Ordering Replacement Parts

To order replacement parts, please supply the part number, the quantity, and the description of each part desired.

Understanding Reference Numbers

Each identified part in an illustration has a reference number. The reference number for a part also appears in the parts list, along with other information about the part.

This catalog uses two special reference number formats, one to indicate parts in a service assembly and another to indicate the quantity of a given part in an illustration.

Service Assembly Reference Numbers

Parts in service assemblies have reference numbers in the form a:b. The a represents the reference number of the entire service assembly and the b represents a sequential number unique to each part within the service assembly.

For example, a wheel assembly might be identified by reference number 6, the tire by 6:1, the valve by 6:2, and the wheel by 6:3. When you order the assembly identified by reference number 6, you receive all parts identified by reference numbers 6:1, 6:2, and 6:3. However, you may also order any part individually. Reference numbers of this type appear in illustration and in parts lists.

Reference Numbers Indicating Quantity

In an illustration, if a reference number indicates more than one part, the reference number has the form nX y. The n represents the quantity of the part, the X is the multiplication symbol, and the y represents the reference number.

For example, in an illustration, the reference number 2X 37 means that two of the parts identified by reference number 37 are indicated.

List of Abbreviations

AR: as required

ASM: assembly

BBC: blade brake control

BHTF: button head thread forming

CARR: carriage

CCW: counter clockwise

CW: clockwise

DEG: degrees

DPA: Dual Point Adjustment

ECM: electronic control module

EXT: external

FH: flat head

GA: gauge

HD: heavy-duty

HF: hex flange

HH: hex head

HHF: hex head flange

HHFTF: hex head flange thread forming

HJ: hex jam

HLH: hex lag head

HOC: height-of-cut

HSBH: hex socket button head

HSFH: hex socket flat head

HSH: hex socket head

HWH: hex washer head

HWHTF: hex washer head thread forming

HYD: hydraulic

LH: left hand

LP: Liquefied Petroleum Gas

LPG: Liquefied Petroleum Gas

NI: nylon insert

NPTF: national pipe thread fine

PFH: phillips flat head

PPH: phillips pan head

PPHTF: phillips pan head thread forming

PRH: phillips round head

PTH: phillips truss head

PTO: power-take-off

RH: right hand

ROPS: roll-over protection system

RRB: rear roller brush

SFH: slotted fillister head

SHH: slotted hex head

SHWH: slotted hex washer head

SPH: slotted pan head

SQH: square head

SRH: slotted round head

STD: standard

TAP: self tapping

TTH: torx truss head

Contents

Housing Assembly 4

Front Wheel Assembly 5

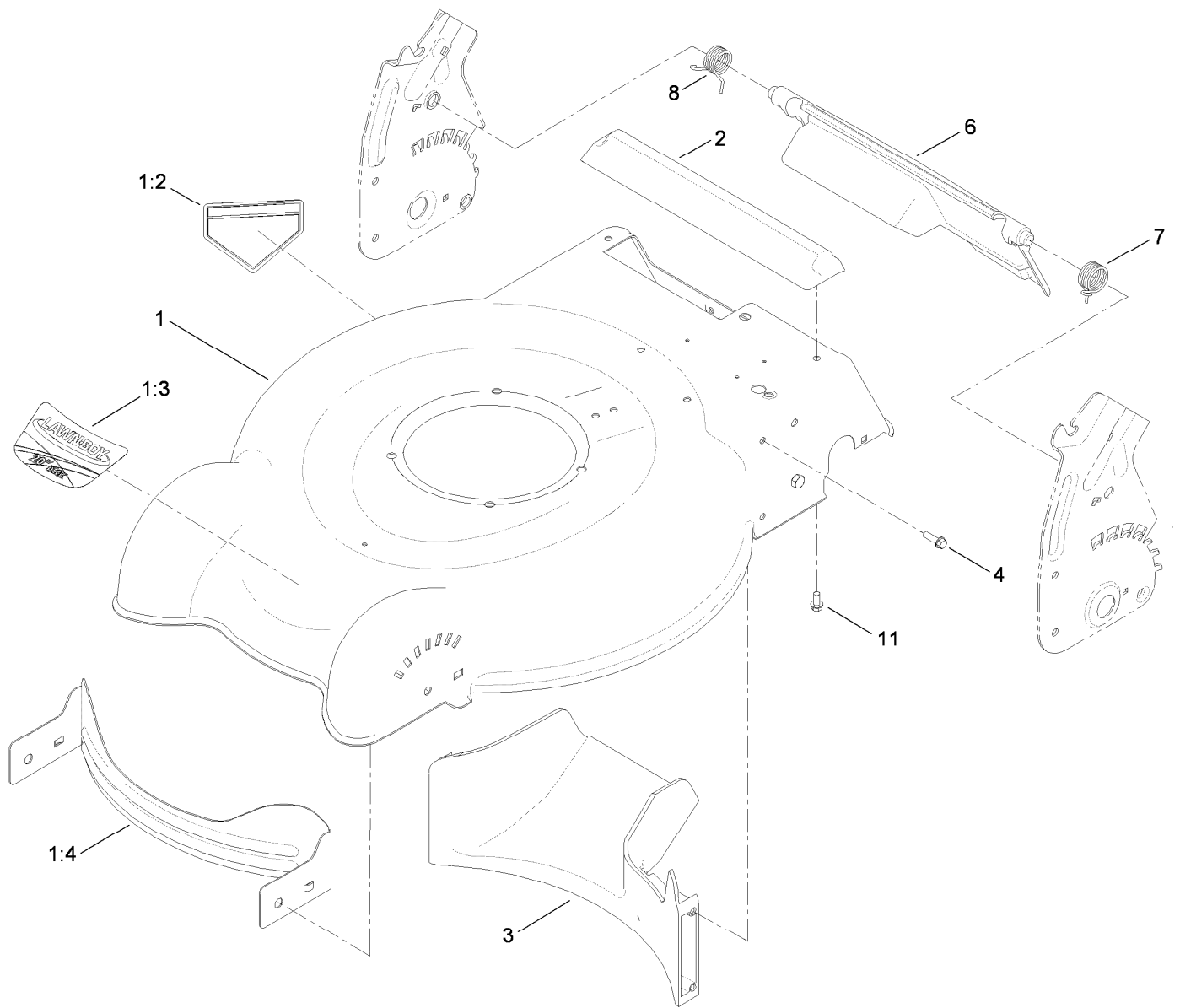
Transmission, Rear Wheel and Height-of-Cut Assembly 6

Engine and Blade Assembly 7

Engine Assembly No. 119-1900 8

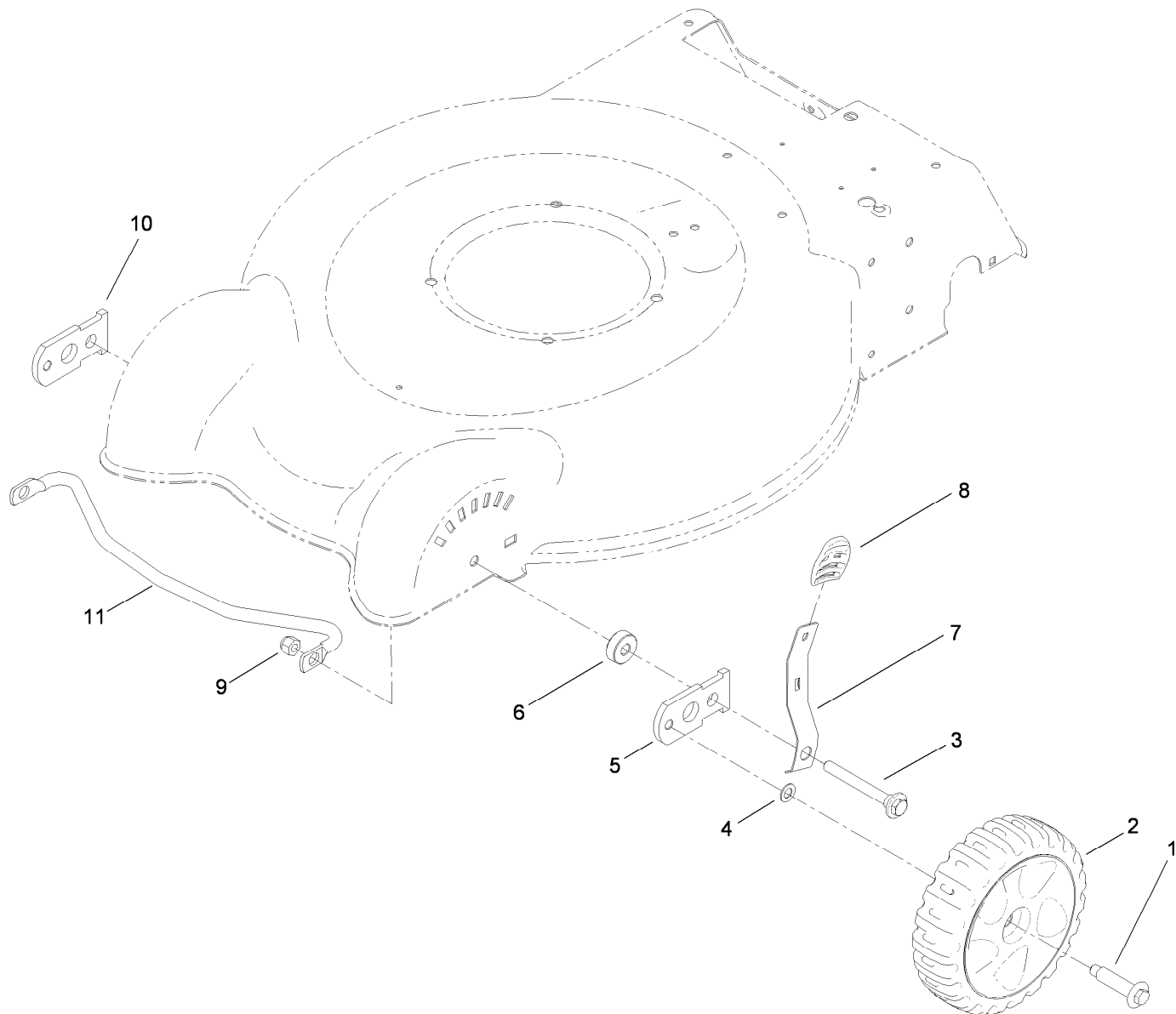
Handle Assembly 9

Rear Bag and Deflector Assembly 10



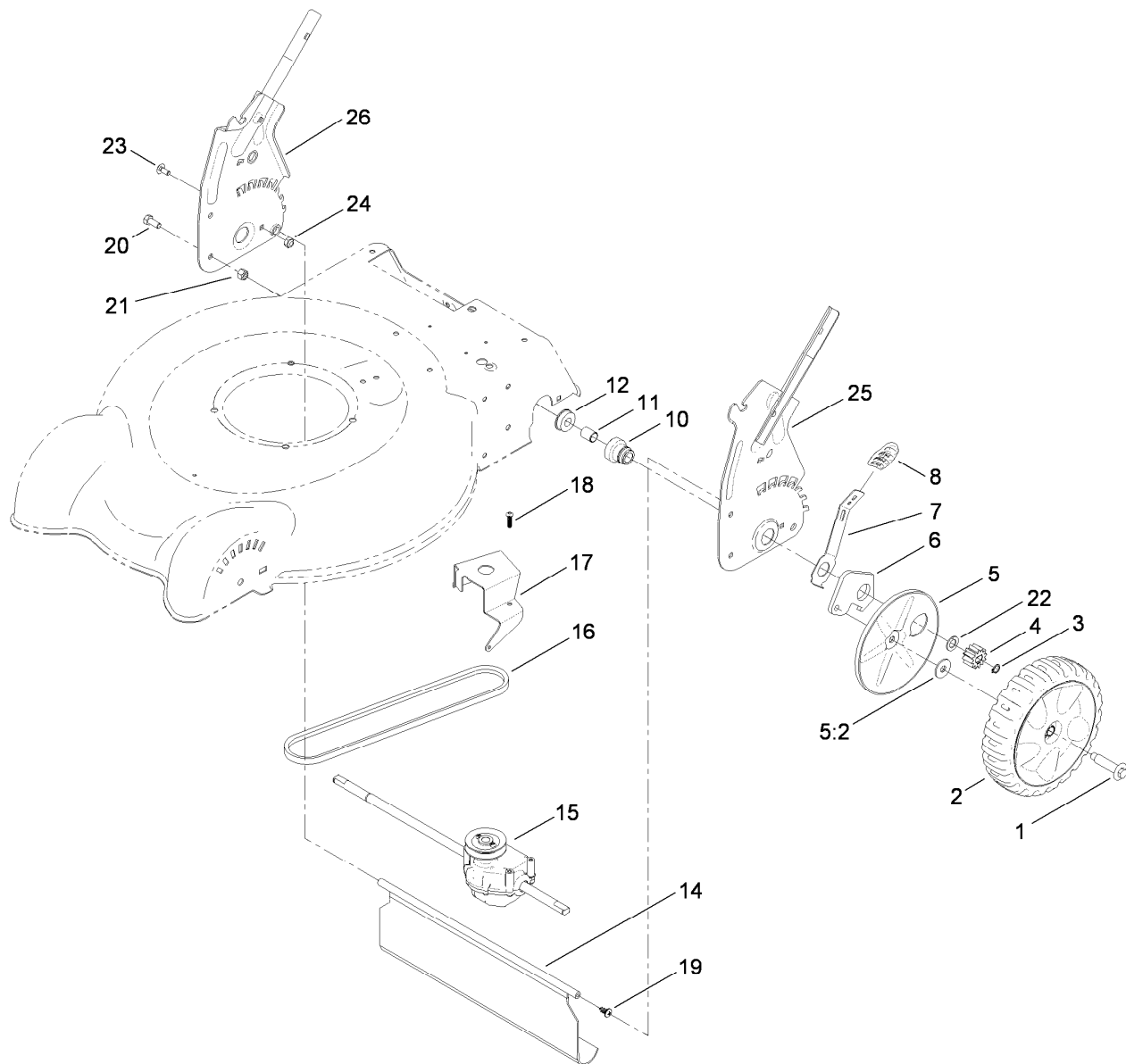
Housing Assembly

Ref.	Part Number	Qty.	Description
1	117-5944	1	Housing ASM
1:2	112-8760	1	Decal-Danger
1:3	117-5947	1	Decal-Deck
1:4	117-4162-01	1	Baffle-Front
2	112-8845	1	Chute-Rear
3	112-8821	1	Baffle-Rear
4	46-8091	5	Screw-HWH
6	117-5923	1	Rear Deflector ASM
7	112-8848	1	Spring-Torsion, LH
8	112-8849	1	Spring-Torsion, RH
11	46-8093	3	Screw-Plastite



Front Wheel Assembly

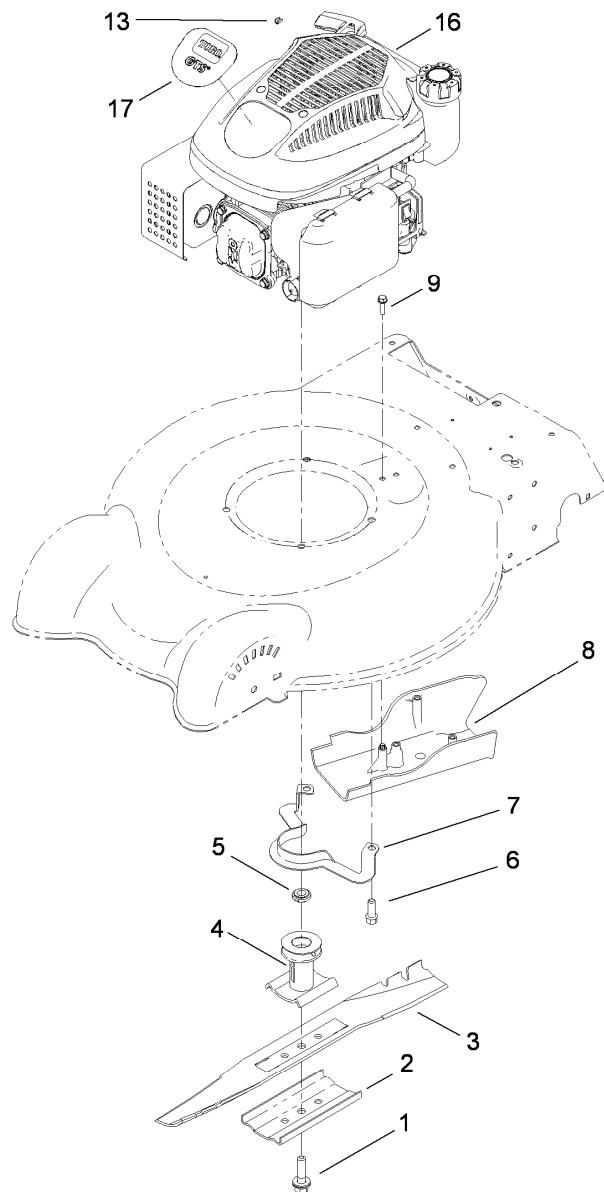
Ref.	Part Number	Qty.	Description
1	614650	2	Bolt-Shoulder
2	117-5964	2	7 Inch Wheel And Tire ASM
3	614672	2	Bolt-Shoulder
4	40-1940	2	Washer
5	107-3877	1	Arm-Pivot, RH
6	117-5997	2	Spacer-Arm, Pivot
7	112-8828	2	Arm-Spring, Front
8	105-3042	2	Knob-Lever, HOC
9	3296-39	2	Nut-Lock, NI
10	108-1044	1	Arm-Pivot, LH
11	117-4161	1	Brace-Front



Transmission, Rear Wheel and Height-of-Cut Assembly

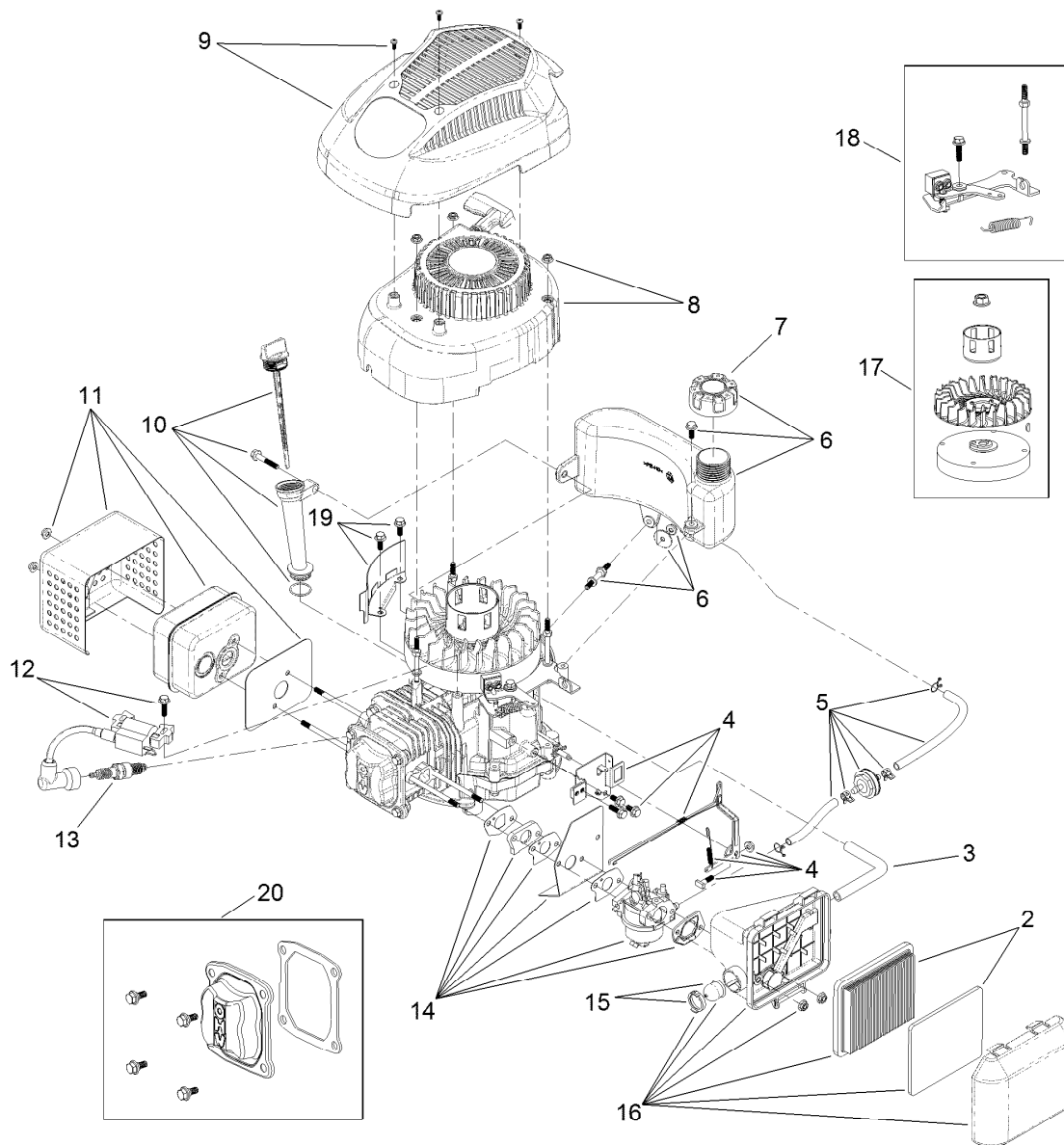
Ref.	Part Number	Qty.	Description
1	614650	2	Bolt-Shoulder
2	119-0321	2	8 Inch Wheel Gear ASM
3	32151-61	2	Ring-Retaining
4	115-4668	2	Gear-Pinion, 12T
5	117-4197	2	Wheel Cover ASM
5:2	614426	1	Washer-Stepped
6	108-9781	2	Arm-Pivot, Rear
7	108-9780	2	Arm-Spring
8	105-3042	2	Knob-Lever, HOC
10	108-9779	2	Retainer-Bushing, HOC
11	108-9782	2	Bushing-Sleeve
12	104-8699	2	Bearing-Ball
14	112-8768	1	Shield-Trailing

Ref.	Part Number	Qty.	Description
15	112-8831	1	Transmission ASM
16	110-9429	1	V-Belt
17	114-7977-03	1	Bracket-Transmission
18	108-7476	3	Screw-Plastite
19	117-1092	2	Screw-PTH
20	322-3	4	Screw-HH
21	3296-29	4	Nut-Lock, NI
22	110-7191	2	Washer-Thrust
23	3229-11	2	Screw-CARR
24	3296-16	2	Nut-Lock, NI
25	119-3804-03	1	HOC-LH
26	119-3805-03	1	HOC-RH



Engine and Blade Assembly

Ref.	Part Number	Qty.	Description
1	105-8579	1	Bolt-Blade
2	108-3766-03	1	Support-Blade
3	112-8841-03	1	Blade-20 Inch
4	106-3987	1	Blade Driver ASM
5	106-3999	1	Spacer-Driver
6	95-1726	3	Screw-Taptite
7	105-3030-03	1	Guide-Belt
8	112-8829	1	Cover-Belt
9	46-8091	3	Screw-HWH
13	92-1701	1	Stop-Rope
16	119-1900	1	Engine-Lc1P65Fa
17	119-2264	1	Decal-Engine

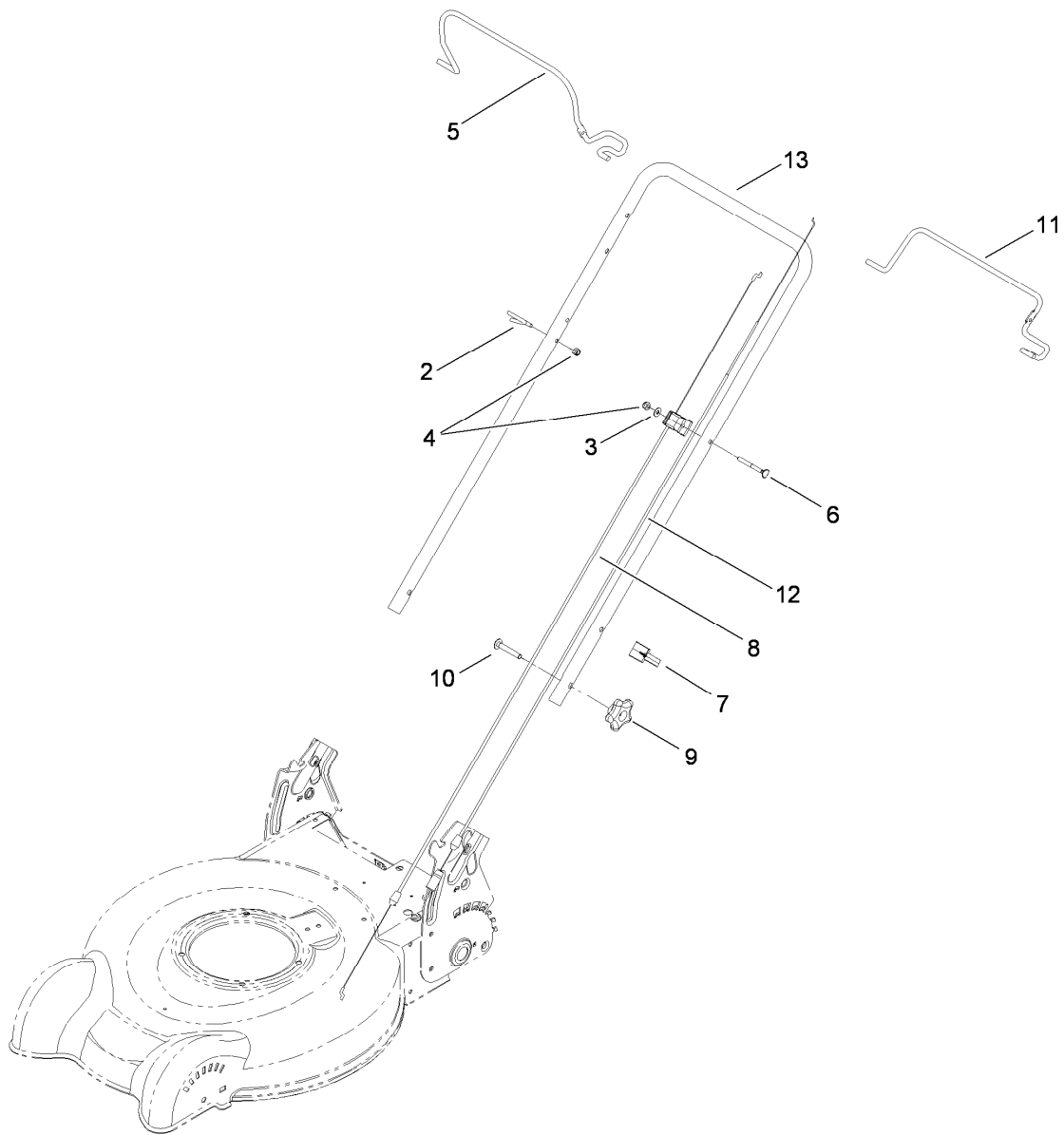


Engine Assembly No. 119-1900

Ref.	Part Number	Qty.	Description
2	119-1909	1	Air Filter And Prefilter Kit
3	119-1902	1	Tube-Breather
4	119-1918	1	Governor Arm Kit (Spring And Link)
5	120-4400	1	Fuel Line Kit
6	119-1915	1	Fuel Tank Kit (Cap And Hardware)
7	119-1914	1	Cap-Fuel
8	119-1904	1	Shroud And Recoil ASM
9	119-1905	1	Styling Shroud Kit
10	119-1903	1	Dipstick And Fill Tube Kit
11	119-1913	1	Muffler Kit (Heat Shield And Gaskets)

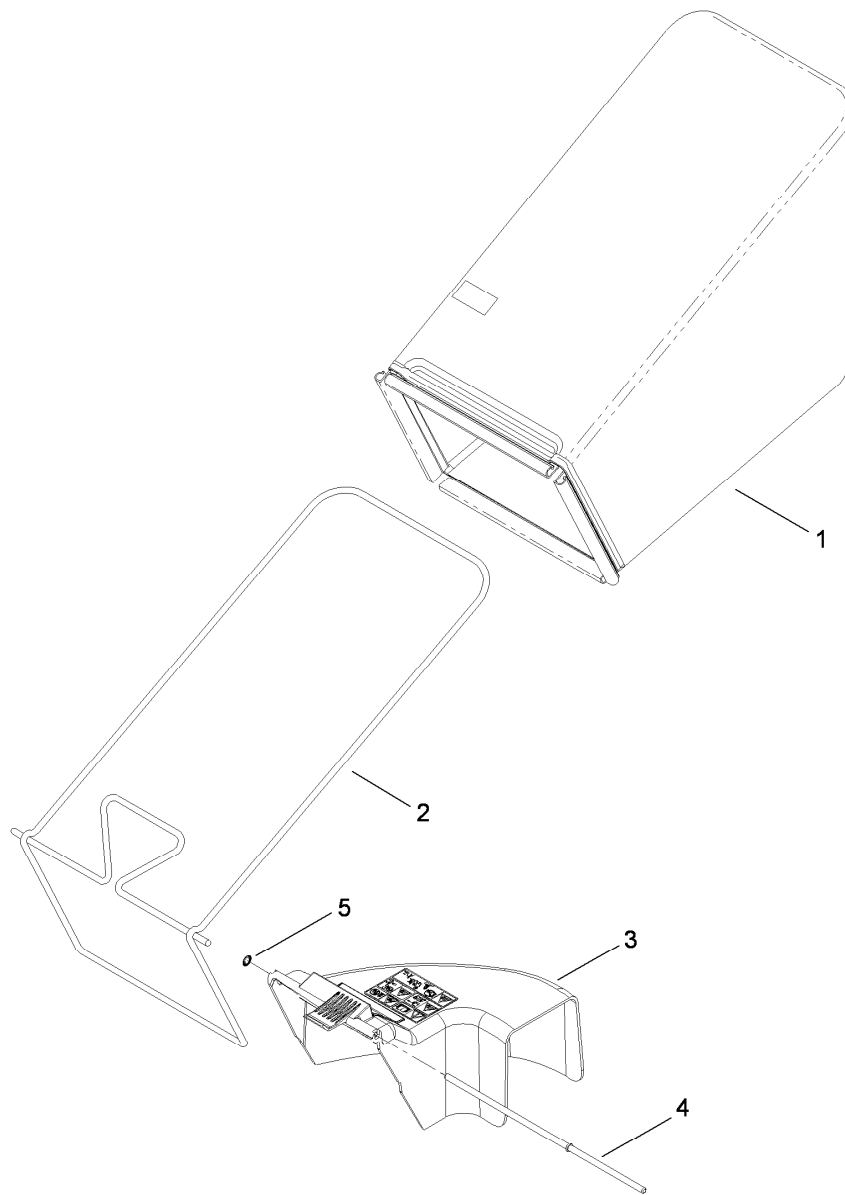
Ref.	Part Number	Qty.	Description
12	119-1908	1	Ignition And Hardware Kit
13	119-1901	1	Spark Plug
14	120-4420	1	Complete Carb Service Kit
14	120-4405	1	Carburetor Repair Kit
15	119-1911	1	Primer Bulb And Base Kit
16	121-0429	1	Kit-Air Cleaner ASM, Primer, 2 Hinge
17	119-1970	1	Flywheel And Fan Kit
18	119-1991	1	Brake ASM Recoil Kit
19	119-1994	1	Flywheel Shield Kit
20	121-0492	1	Kit-Valve Cover
21	119-1917	1	Kit-Complete Gasket Seal And O-Ring ●

● Not illustrated



Handle Assembly

Ref.	Part Number	Qty.	Description
2	86-9671	1	Guide-Rope
3	3256-1	1	Washer-Flat
4	3296-73	2	Nut-Lock, NI
5	117-5940-03	1	Bail-Brake
6	92-2270	1	Screw-Handle
7	114-7988	1	Guide-Cable
8	112-8818	1	Cable-Brake
9	117-5976	2	Knob-Handle, Locking
10	3230-6	2	Screw-CARR
11	112-8835-03	1	Bail-Traction, 2-Bail Flat
12	112-8817	1	Cable-Traction
13	119-0308-05	1	Handle-Upper



Rear Bag and Deflector Assembly

Ref.	Part Number	Qty.	Description
1	119-3759	1	Grass Bag ASM
2	112-8825-03	1	Frame-Bag
3	119-3762	1	Rear Deflector ASM
4	117-4159	1	Rod
5	32151-72	1	Ring-Retaining

Notes:



Count on it.