



**Count on it.**

# Parts Catalog

## 20-inch Mulching/Rear Bagging Lawn Mower

Model No. 20323—Serial No. 312000001 and Up



# Ordering Replacement Parts

To order replacement parts, please supply the part number, the quantity, and the description of each part desired.

## Understanding Reference Numbers

Each identified part in an illustration has a reference number. The reference number for a part also appears in the parts list, along with other information about the part.

This catalog uses two special reference number formats, one to indicate parts in a service assembly and another to indicate the quantity of a given part in an illustration.

## Service Assembly Reference Numbers

Parts in service assemblies have reference numbers in the form a:b. The a represents the reference number of the entire service assembly and the b represents a sequential number unique to each part within the service assembly.

For example, a wheel assembly might be identified by reference number 6, the tire by 6:1, the valve by 6:2, and the wheel by 6:3. When you order the assembly identified by reference number 6, you receive all parts identified by reference numbers 6:1, 6:2, and 6:3. However, you may also order any part individually. Reference numbers of this type appear in illustration and in parts lists.

## Reference Numbers Indicating Quantity

In an illustration, if a reference number indicates more than one part, the reference number has the form nX y. The n represents the quantity of the part, the X is the multiplication symbol, and the y represents the reference number.

For example, in an illustration, the reference number 2X 37 means that two of the parts identified by reference number 37 are indicated.

# List of Abbreviations

**AR:** as required

**ASM:** assembly

**BBC:** blade brake control

**BHTF:** button head thread forming

**CARR:** carriage

**CCW:** counter clockwise

**CW:** clockwise

**DEG:** degrees

**DPA:** Dual Point Adjustment

**ECM:** electronic control module

**EXT:** external

**FH:** flat head

**GA:** gauge

**HD:** heavy-duty

**HF:** hex flange

**HH:** hex head

**HHF:** hex head flange

**HHFTF:** hex head flange thread forming

**HJ:** hex jam

**HLH:** hex lag head

**HOC:** height-of-cut

**HSBH:** hex socket button head

**HSFH:** hex socket flat head

**HSH:** hex socket head

**HWH:** hex washer head

**HWHTF:** hex washer head thread forming

**HYD:** hydraulic

**LH:** left hand

**LP:** Liquefied Petroleum Gas

**LPG:** Liquefied Petroleum Gas

**NI:** nylon insert

**NPTF:** national pipe thread fine

**PFH:** phillips flat head

**PPH:** phillips pan head

**PPHTF:** phillips pan head thread forming

**PRH:** phillips round head

**PTH:** phillips truss head

**PTO:** power-take-off

**RH:** right hand

**ROPS:** roll-over protection system

**RRB:** rear roller brush

**SFH:** slotted fillister head

**SHH:** slotted hex head

**SHWH:** slotted hex washer head

**SPH:** slotted pan head

**SQH:** square head

**SRH:** slotted round head

**STD:** standard

**TAP:** self tapping

**TTH:** torx truss head

# Contents

Housing and Rear Door Assembly ..... 4

Front Wheel and Height-of-Cut Assembly ..... 5

Rear Wheel and Height-of-Cut Assembly ..... 6

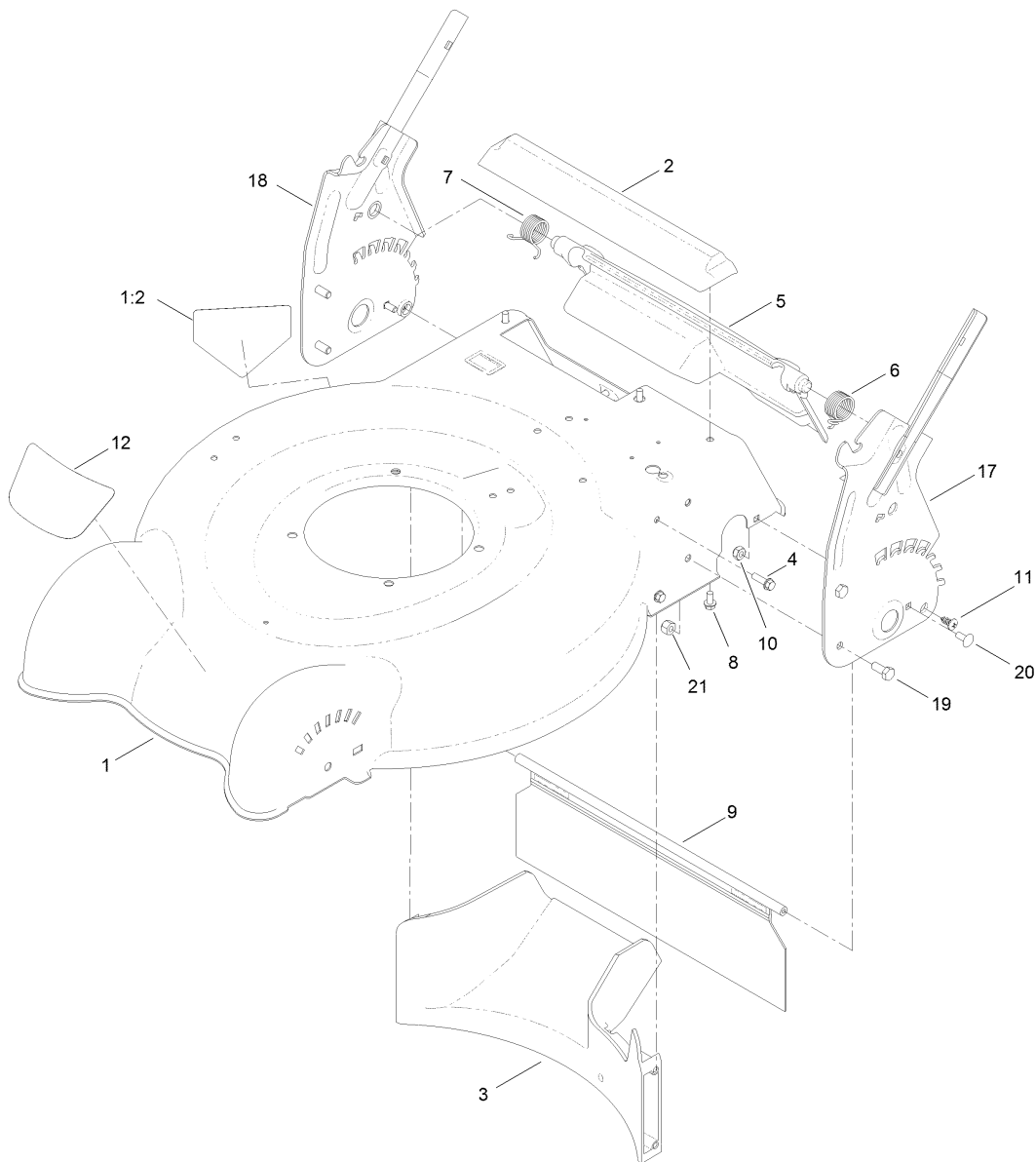
Engine and Blade Assembly ..... 7

Engine Assembly No. 119-1989 ..... 8

Handle Assembly ..... 10

Rear Bag Assembly ..... 11

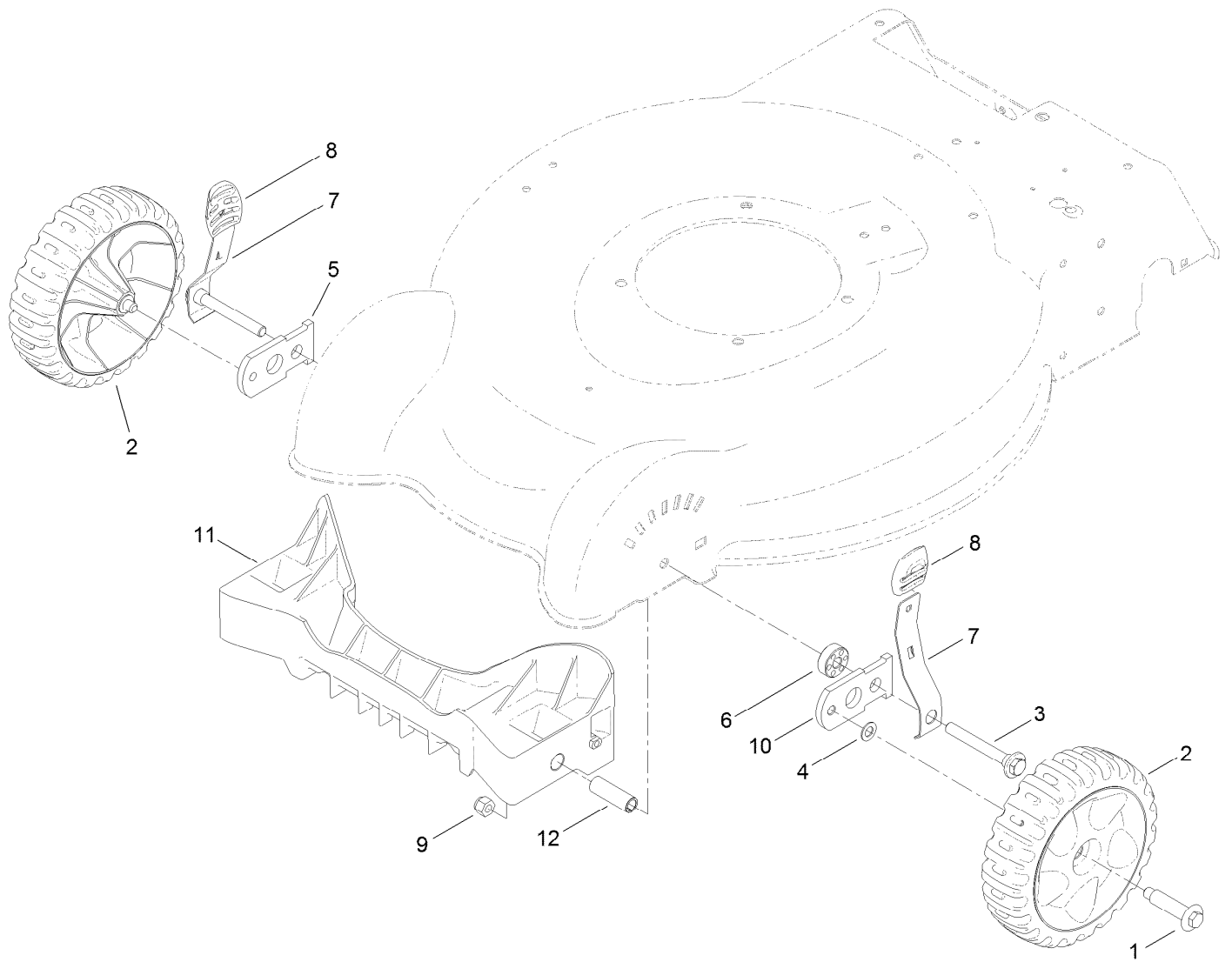
Attachments and Accessories ..... 12



## Housing and Rear Door Assembly

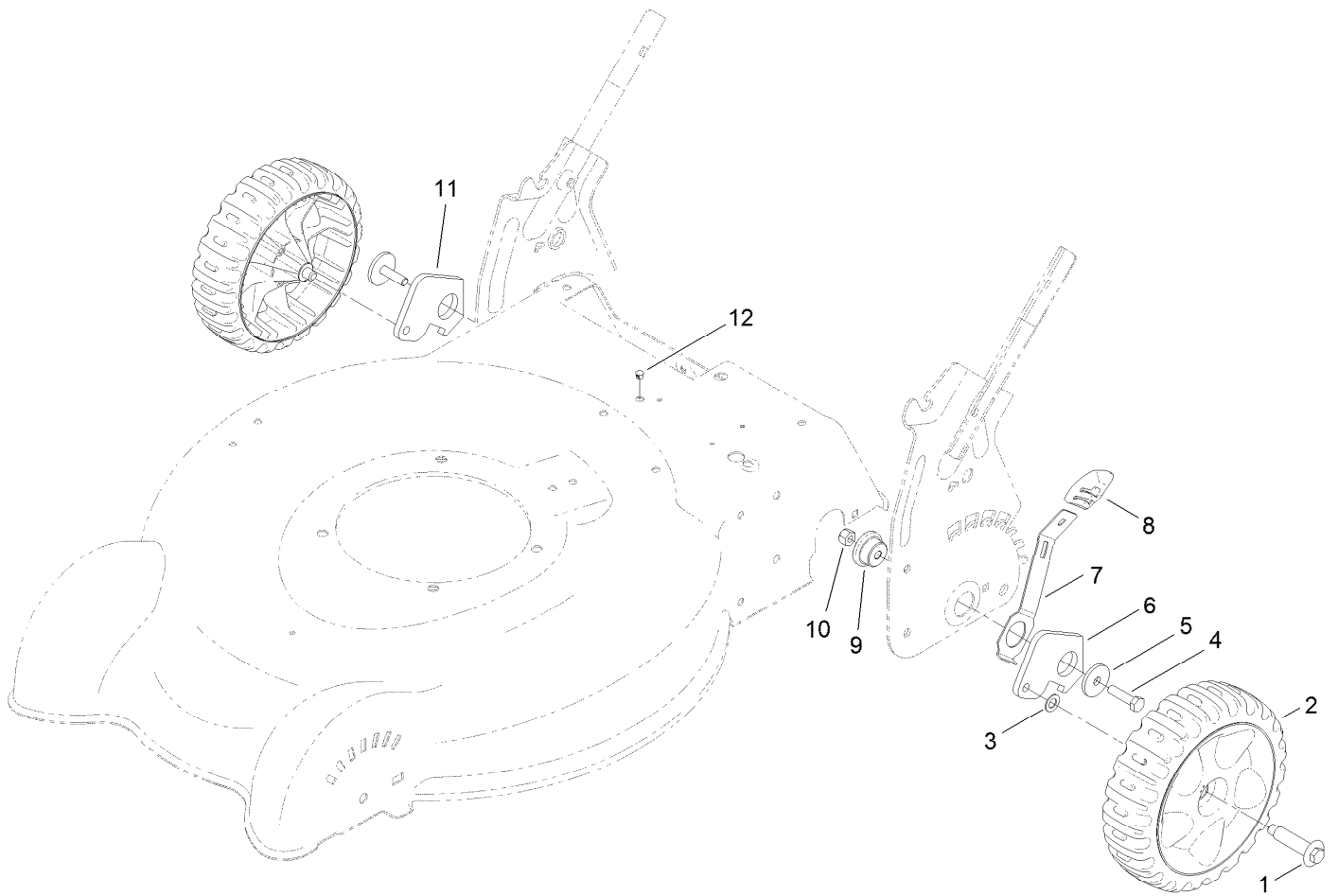
Ref.	Part Number	Qty.	Description
1	120-9482	1	Housing ASM
1:2	94-8072	1	Decal-Danger
2	112-8845	1	Chute-Rear
3	112-8814	1	Baffle-Rear
4	46-8091	5	Screw-HWH
5	119-7029	1	Rear Deflector ASM
6	119-7015	1	Spring-Torsion, LH
7	119-7016	1	Spring-Torsion, RH
8	46-8093	3	Screw-Plastite

Ref.	Part Number	Qty.	Description
9	120-7010	1	Shield-Trailing
10	3296-16	2	Nut-Lock, NI
11	117-1092	2	Screw-PTH
12	119-7008	1	Decal-Deck
17	119-3804-03	1	HOC-LH
18	119-3805-03	1	HOC-RH
19	322-3	4	Screw-HH
20	3229-11	2	Screw-CARR
21	3296-29	4	Nut-Lock, NI



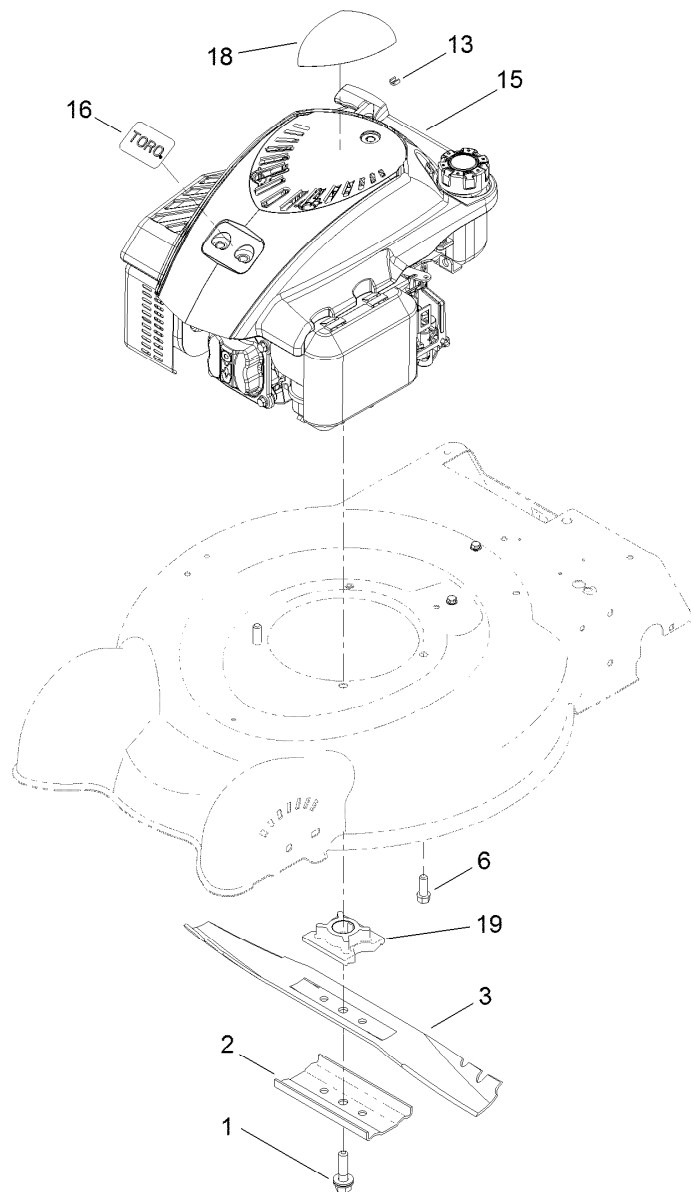
## Front Wheel and Height-of-Cut Assembly

Ref.	Part Number	Qty.	Description
1	614650	2	Bolt-Shoulder
2	119-3777	2	7 Inch Wheel And Tire ASM
3	117-5996	2	Bolt-Shoulder
4	40-1940	2	Washer
5	107-3877	1	Arm-Pivot, RH
6	117-5997	2	Spacer-Arm, Pivot
7	112-8828	2	Arm-Spring, Front
8	105-3042	2	Knob-Lever, HOC
9	3296-39	2	Nut-Lock, NI
10	108-1044	1	Arm-Pivot, LH
11	119-7082	1	Baffle-Throw, Front
12	117-5992	2	Spacer-Baffle, Front



## Rear Wheel and Height-of-Cut Assembly

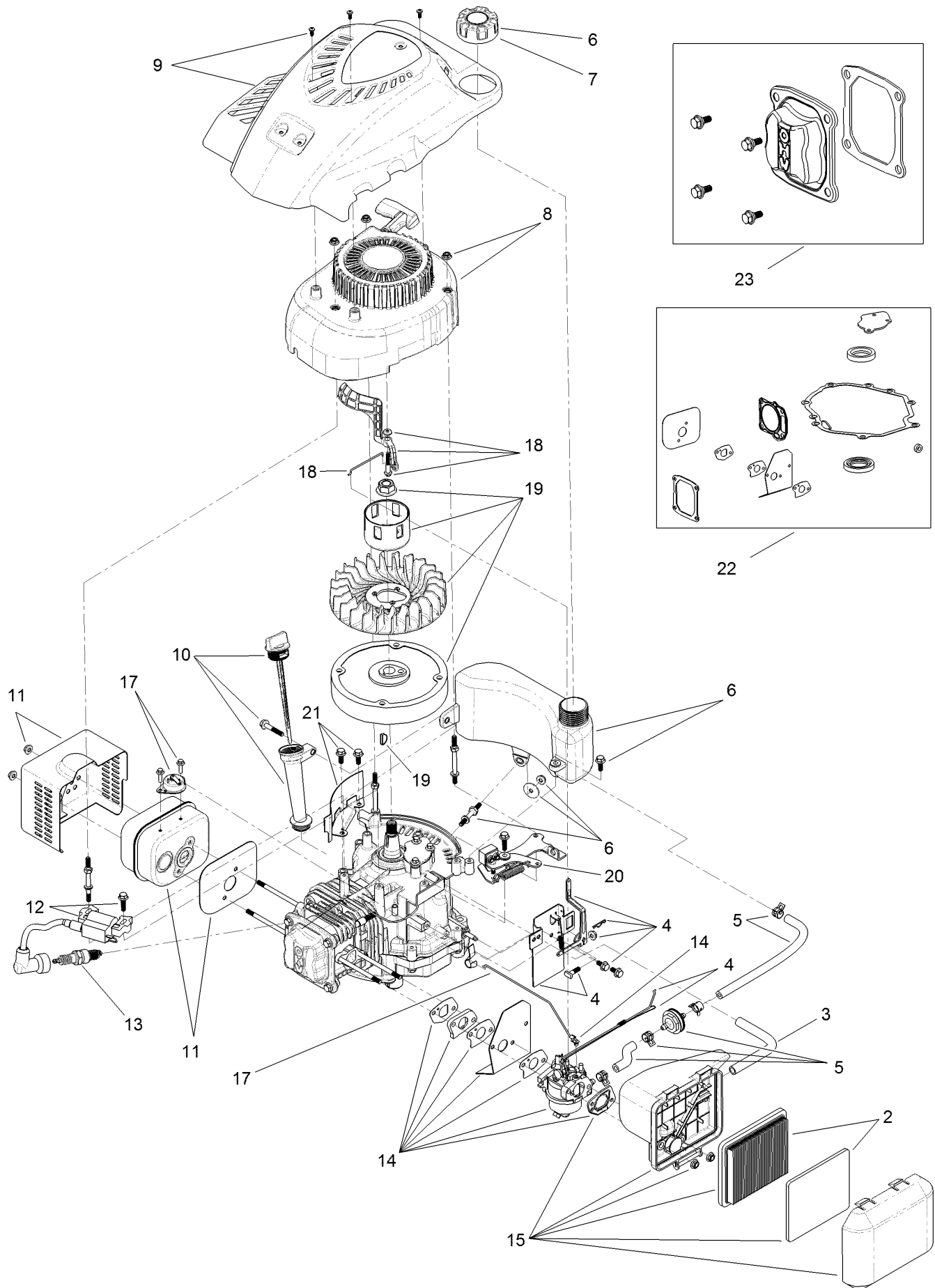
Ref.	Part Number	Qty.	Description
1	614650	2	Bolt-Shoulder
2	117-5995	2	8 Inch Wheel And Tire ASM
3	40-1940	2	Washer
4	322-6	2	Screw-HH
5	105-3048	2	Washer-Flat
6	105-1819	1	Arm-Pivot, Rear (LH)
7	105-1809	2	Arm-Spring
8	105-3042	2	Knob-Lever, HOC
9	105-1818	2	Bushing-Mount, HOC
10	3296-29	6	Nut-Lock, NI
11	108-4816	1	Arm-Pivot, Rear (RH)
12	104-9373	5	Plug-Dome



## Engine and Blade Assembly

Ref.	Part Number	Qty.	Description
1	105-8579	1	Bolt-Blade
2	108-3766-03	1	Support-Blade
3	112-8841-03	1	Blade-20 Inch
6	95-1726	3	Screw-Taptite
13	92-1701	1	Stop-Rope
15	119-1989	1	Engine-Lc1P65Fa
16	119-3808	1	Plate-Logo, Toro
18	121-5822	1	Decal-Shroud
19	104-1007	1	Retainer-Blade

# Engine Assembly No. 119-1989

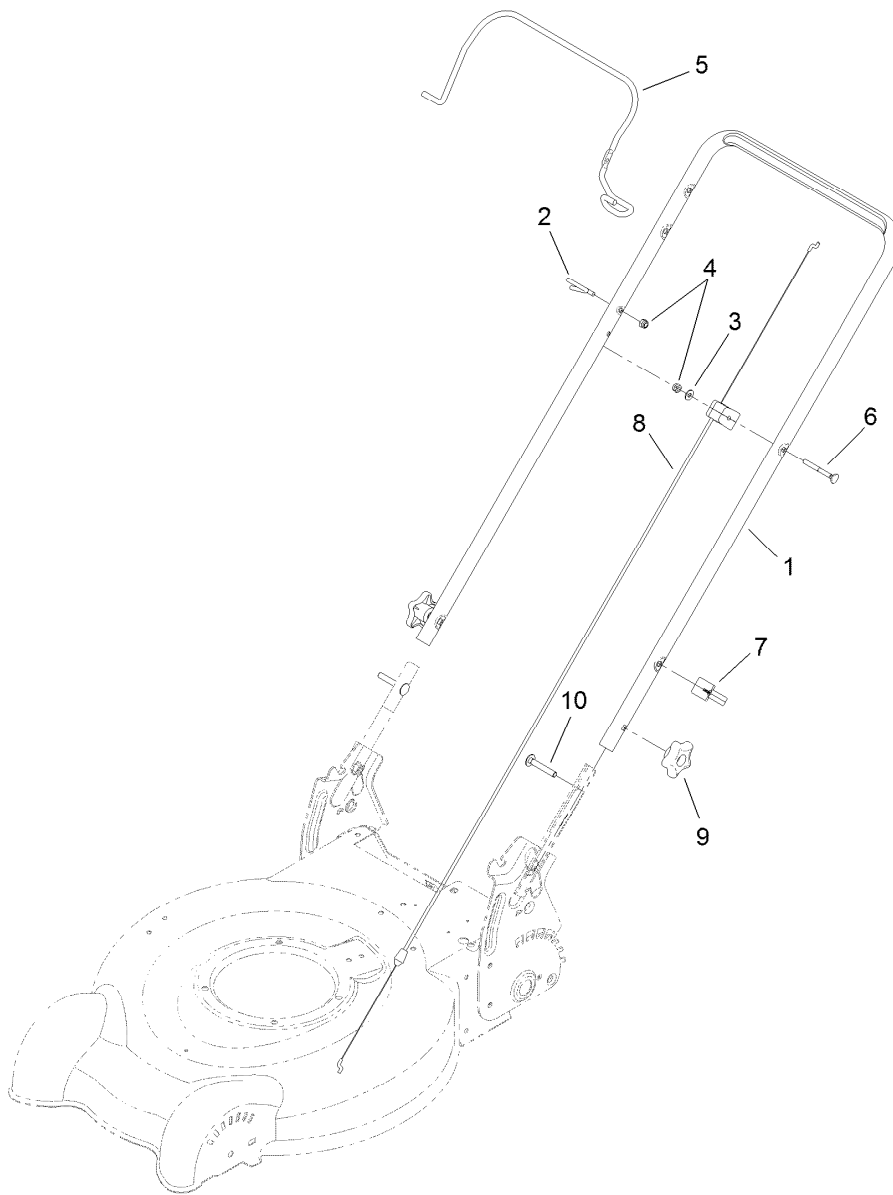




## Engine Assembly No. 119-1989 (continued)

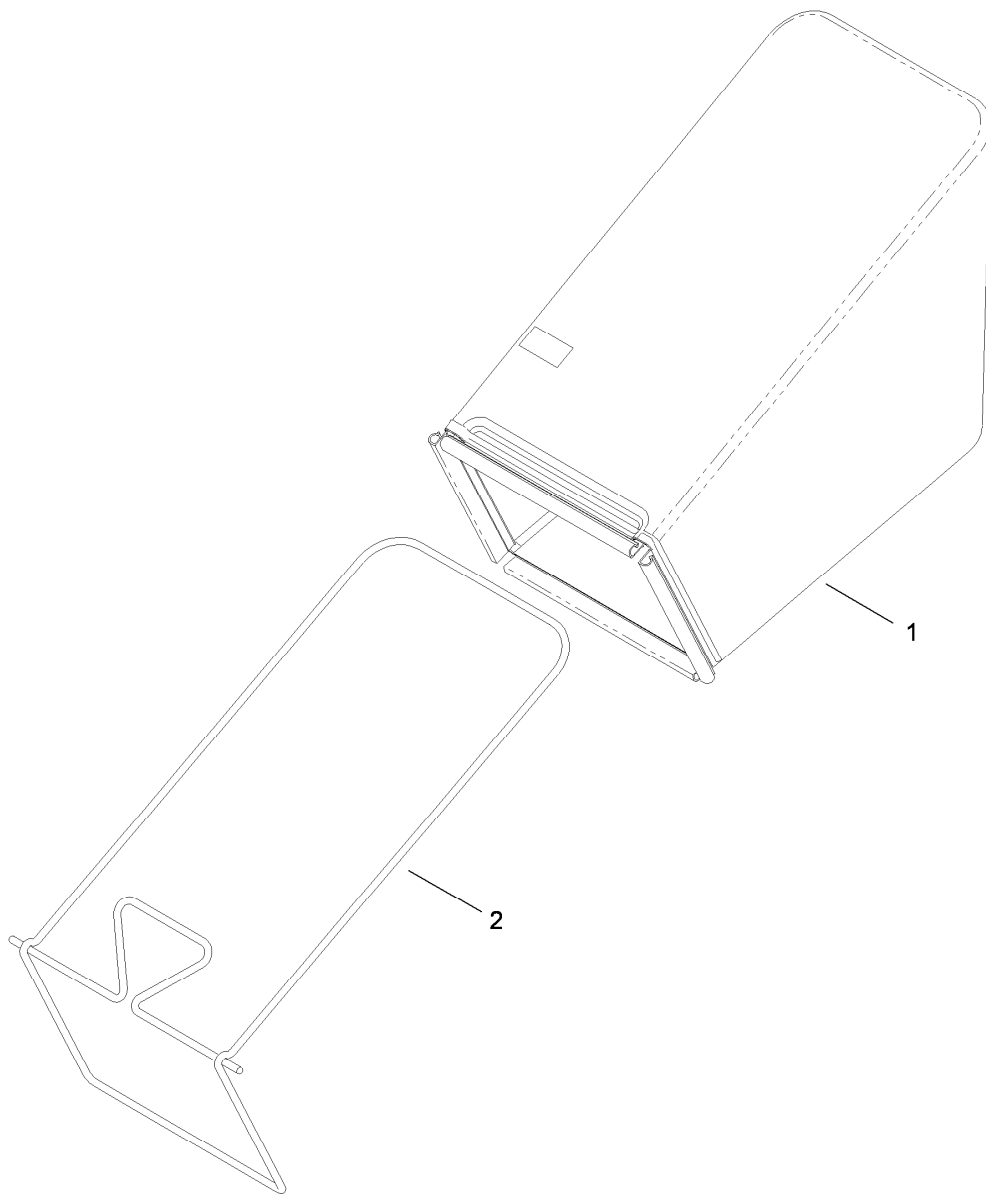
<i>Ref.</i>	<i>Part Number</i>	<i>Qty.</i>	<i>Description</i>
2	119-1909	1	Air Filter And Prefilter Kit
3	119-1902	1	Tube-Breather
4	119-1968	1	Governor Arm Kit
5	120-4400	1	Fuel Line Kit
6	119-1915	1	Fuel Tank Kit (Cap And Hardware)
7	119-1914	1	Cap-Fuel
8	119-1904	1	Shroud And Recoil ASM
9	119-1990	1	Shroud ASM
10	119-1903	1	Dipstick And Fill Tube Kit
11	119-1969	1	Muffler And Shield Kit
12	119-1908	1	Ignition And Hardware Kit

<i>Ref.</i>	<i>Part Number</i>	<i>Qty.</i>	<i>Description</i>
13	119-1901	1	Spark Plug
14	120-4404	1	Carburetor Complete Kit
14	120-4405	1	Carburetor Repair Kit
15	121-0374	1	Air Cleaner ASM, 2 Hinge
17	119-1999	1	Thermal Choke Control Kit
18	119-1966	1	Air Vane Choke Kit
19	119-1970	1	Flywheel And Fan Kit
20	119-1991	1	Brake ASM Recoil Kit
21	119-1994	1	Flywheel Shield Kit
22	121-0425	1	Seal And Gasket Kit
23	121-0492	1	Kit-Valve Cover



## Handle Assembly

Ref.	Part Number	Qty.	Description
1	119-0308-05	1	Handle-Upper
2	86-9671	1	Guide-Rope
3	3256-1	1	Washer-Flat
4	3296-73	2	Nut-Lock, NI
5	117-5940-03	1	Bail-Brake
6	92-2270	1	Screw-Handle
7	114-7988	1	Guide-Cable
8	112-8818	1	Cable-Brake
9	117-5976	2	Knob-Handle, Locking
10	3230-6	2	Screw-CARR



## Rear Bag Assembly

<i>Ref.</i>	<i>Part Number</i>	<i>Qty.</i>	<i>Description</i>
1	119-3759	1	Grass Bag ASM
2	120-7029-03	1	Bag Frame ASM

# Attachments and Accessories

## For 20323 20-inch Mulching/Rear Bagging Lawn Mower

Product Name	Model/Part
Cover-Lawnmower .....	490-7462
Rear-Discharge Deflector, 2009 and After 20in Steel Deck Mower .....	89964

**Notes:**

**Notes:**

**Notes:**



**Count on it.**