



Rear Roller Extension Kit Greensmaster® DPA Reel Mowers

Model No. 125-5180

Form No. 3376-266 Rev A

Installation Instructions

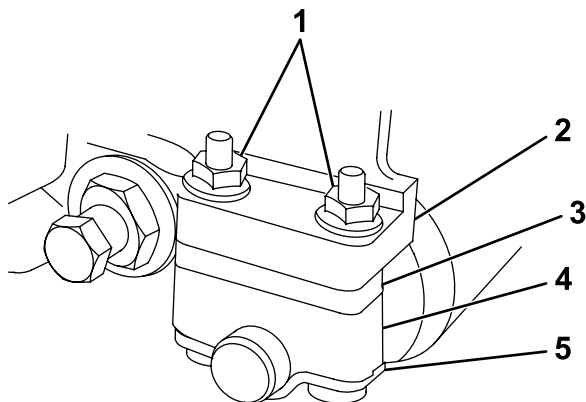
Installation

⚠ WARNING

CALIFORNIA Proposition 65 Warning

This product contains a chemical or chemicals known to the State of California to cause cancer, birth defects, or reproductive harm.

1. Raise the rear of the cutting unit and place a block under the bedknife.
2. Remove and discard the 2 nuts securing each roller. Retain the shim, but discard the bolts, roller spacer, and roller retainer (Figure 1).

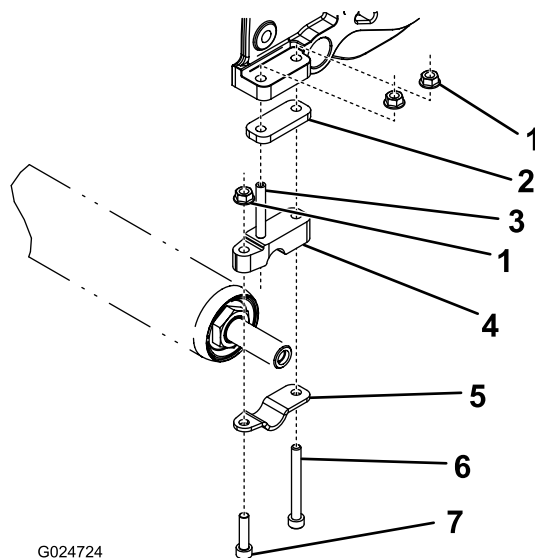


G024723

Figure 1

- | | |
|-------------------------------|--------------------|
| 1. Mounting nuts | 4. Roller spacer |
| 2. Side plate mounting flange | 5. Roller retainer |
| 3. Shim | |

3. Install the loose parts and previously removed shim as shown in Figure 2 or Figure 3, depending on the desired height-of-cut.
4. Adjust to the desired height-of-cut, and tighten the height of cut arm mounting fasteners.



G024724

Figure 2

Height-of-cut between 3–25 mm (1/8–1 inch)

- | | |
|--------------------|--------------------|
| 1. Flange-head nut | 5. Roller retainer |
| 2. Shim | 6. Long bolt |
| 3. Set screw | 7. Short bolt |
| 4. Roller spacer | |



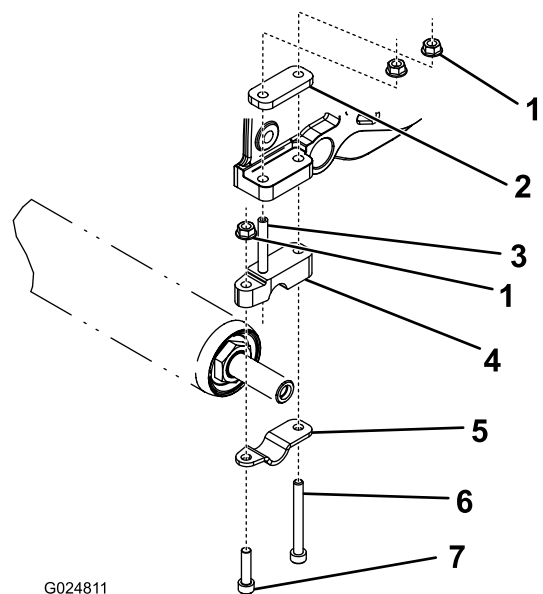


Figure 3

Height-of-cut between 1.5–6 mm (1/16–1/4 inch)

- | | |
|--------------------|--------------------|
| 1. Flange-head nut | 5. Roller retainer |
| 2. Shim | 6. Long bolt |
| 3. Set screw | 7. Short bolt |
| 4. Roller spacer | |
-