



## Tooth Rake Pivot Hitch

**Product:** Sand Pro 3040/5040 Tooth Rake

**Oct 10, 2012**

**Affected Units:**  
Tooth Rake

**Models:**  
08751

**Serial Numbers:**  
260000001 – 312000715

**Situation:** Important Information

Previous designs of tooth rake pivots can hamper rake function and may not perform to expectations under some operating conditions. As a result, the pivot hitch has been redesigned to improve the adjustability and durability of the pivot and provide for improved tooth rake function.

**Correction:** The redesigned Tooth Rake Pivot Hitch (121-9064) can be installed on older tooth rakes in cases where the customer has struggled with pivot bolt failures, rake tracking issues or problems with the rake contacting the rear tire. This redesigned pivot has the pivoting joint built into the pivot assembly and features which will allow for adjustment of the rake aggressiveness (four positions) and rake stop bolts (limits rake travel toward tires).

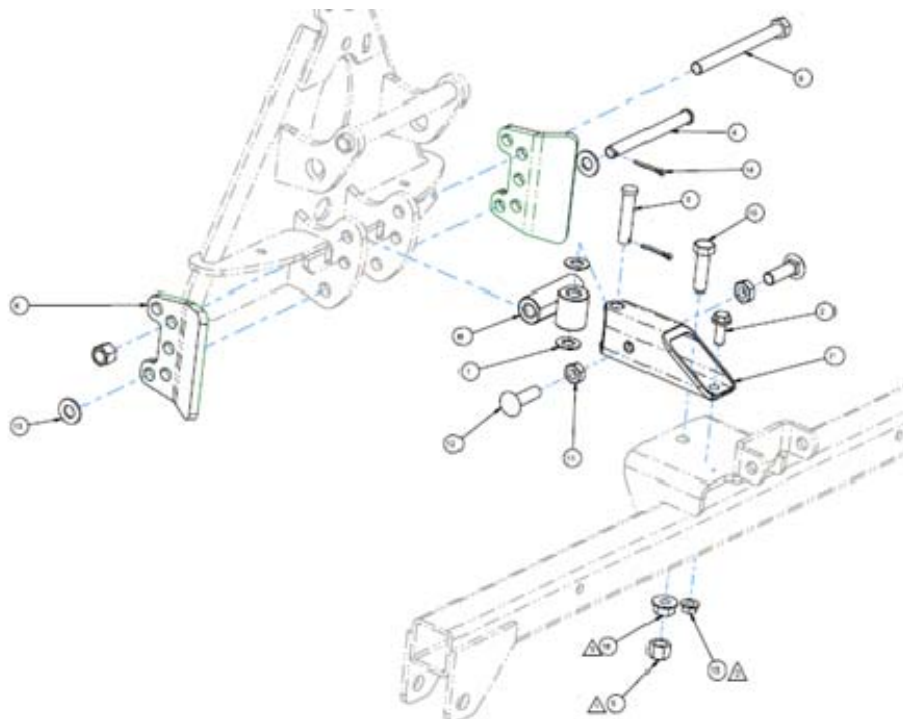
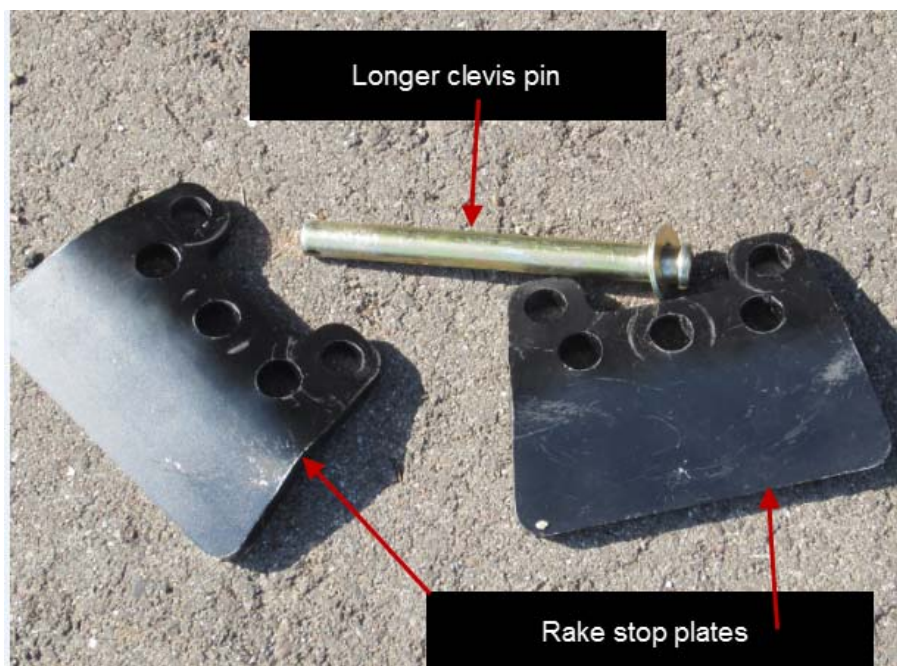
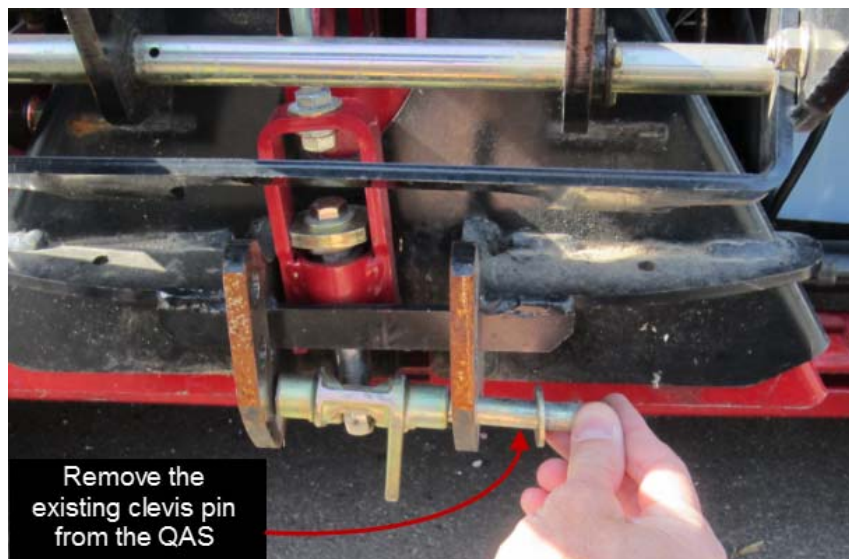


Figure 1 – Parts in dark outline are included in the kit



## Tooth Rake Pivot Hitch

### Installation Instructions



(New stop plates and pin)



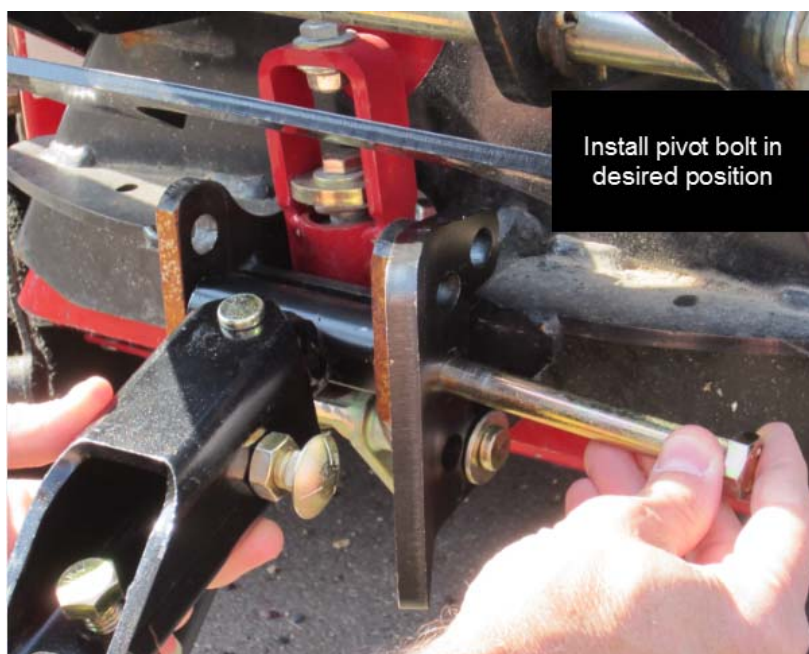
## Tooth Rake Pivot Hitch







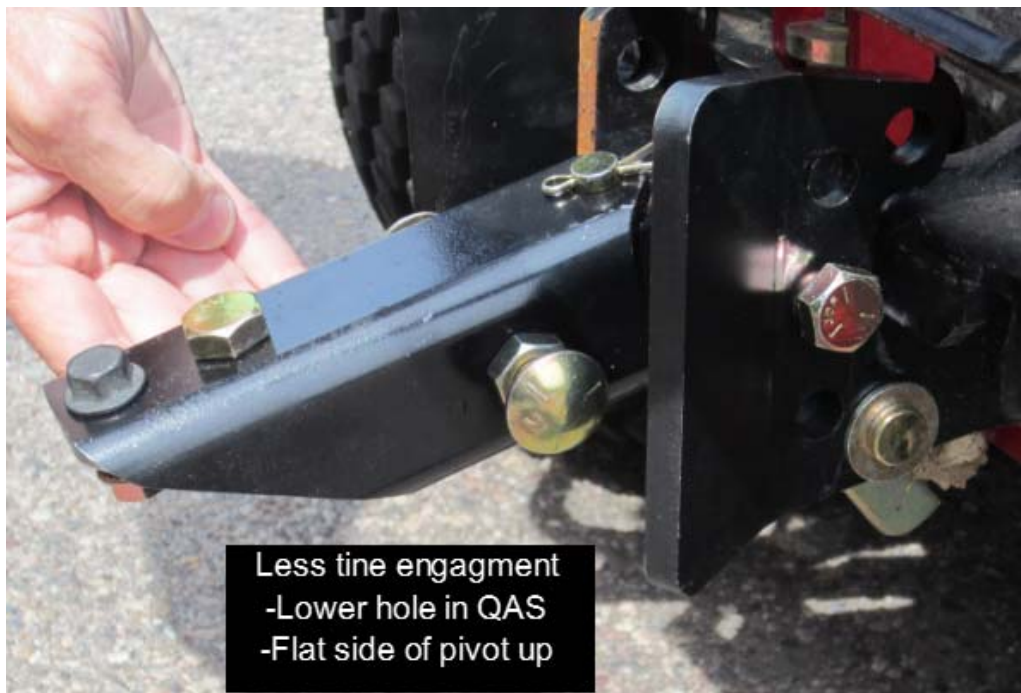
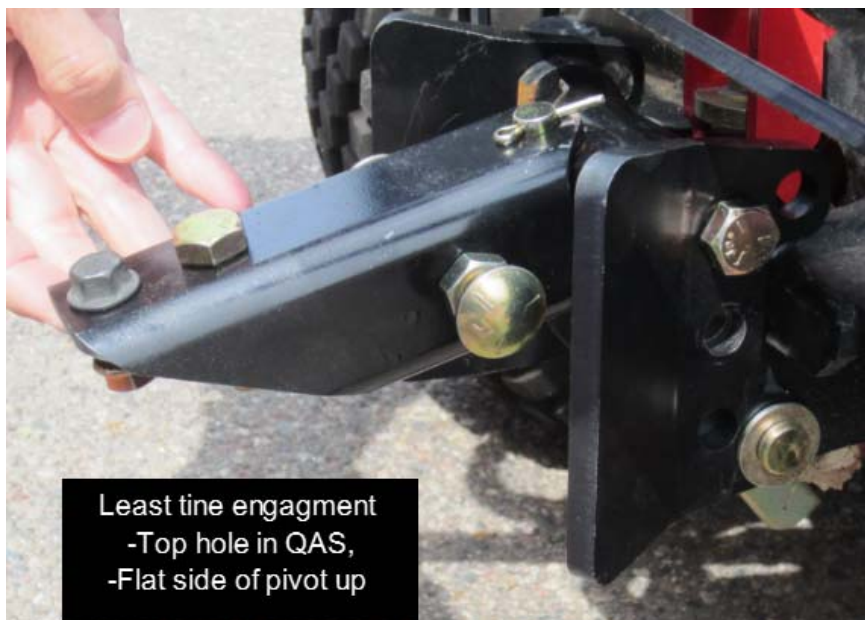
## **Tooth Rake Pivot Hitch**



(refer to the next four slides for setting details)



## Tooth Rake Pivot Hitch





## Tooth Rake Pivot Hitch







## Tooth Rake Pivot Hitch



Adjust stops to prevent rake to tire contact



## Tooth Rake Pivot Hitch

