



Count on it.

Parts Catalog

E-Z Vac™ Twin Bagger

TITAN Zero-Turn-Radius Riding Mower

Model No. 79330—Serial No. 313000001 and Up



Ordering Replacement Parts

To order replacement parts, please supply the part number, the quantity, and the description of each part desired.

Understanding Reference Numbers

Each identified part in an illustration has a reference number. The reference number for a part also appears in the parts list, along with other information about the part.

This catalog uses two special reference number formats, one to indicate parts in a service assembly and another to indicate the quantity of a given part in an illustration.

Service Assembly Reference Numbers

Parts in service assemblies have reference numbers in the form a:b. The a represents the reference number of the entire service assembly and the b represents a sequential number unique to each part within the service assembly.

For example, a wheel assembly might be identified by reference number 6, the tire by 6:1, the valve by 6:2, and the wheel by 6:3. When you order the assembly identified by reference number 6, you receive all parts identified by reference numbers 6:1, 6:2, and 6:3. However, you may also order any part individually. Reference numbers of this type appear in illustration and in parts lists.

Reference Numbers Indicating Quantity

In an illustration, if a reference number indicates more than one part, the reference number has the form nX y. The n represents the quantity of the part, the X is the multiplication symbol, and the y represents the reference number.

For example, in an illustration, the reference number 2X 37 means that two of the parts identified by reference number 37 are indicated.

List of Abbreviations

AR: as required

ASM: assembly

BBC: blade brake control

BHTF: button head thread forming

CARR: carriage

CCW: counter clockwise

CW: clockwise

DEG: degrees

DPA: Dual Point Adjustment

ECM: electronic control module

EXT: external

FH: flat head

GA: gauge

HD: heavy-duty

HF: hex flange

HH: hex head

HHF: hex head flange

HHFTF: hex head flange thread forming

HJ: hex jam

HLH: hex lag head

HOC: height-of-cut

HSBH: hex socket button head

HSFH: hex socket flat head

HSH: hex socket head

HWH: hex washer head

HWHTF: hex washer head thread forming

HYD: hydraulic

LH: left hand

LP: Liquefied Petroleum Gas

LPG: Liquefied Petroleum Gas

NI: nylon insert

NPTF: national pipe thread fine

PFH: phillips flat head

PPH: phillips pan head

PPHTF: phillips pan head thread forming

PRH: phillips round head

PTH: phillips truss head

PTO: power-take-off

RH: right hand

ROPS: roll-over protection system

RRB: rear roller brush

SFH: slotted fillister head

SHH: slotted hex head

SHWH: slotted hex washer head

SPH: slotted pan head

SQH: square head

SRH: slotted round head

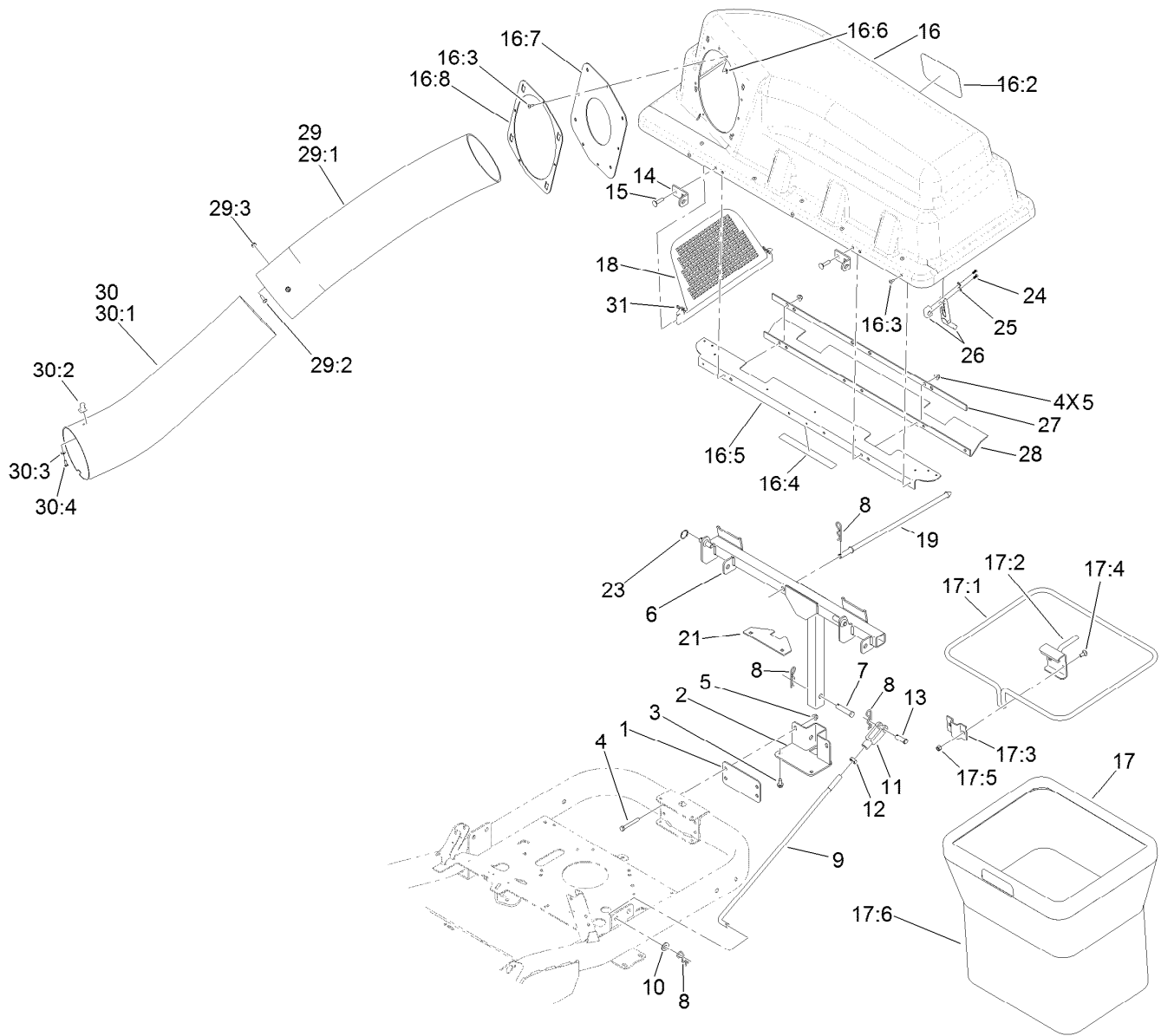
STD: standard

TAP: self tapping

TTH: torx truss head

Contents

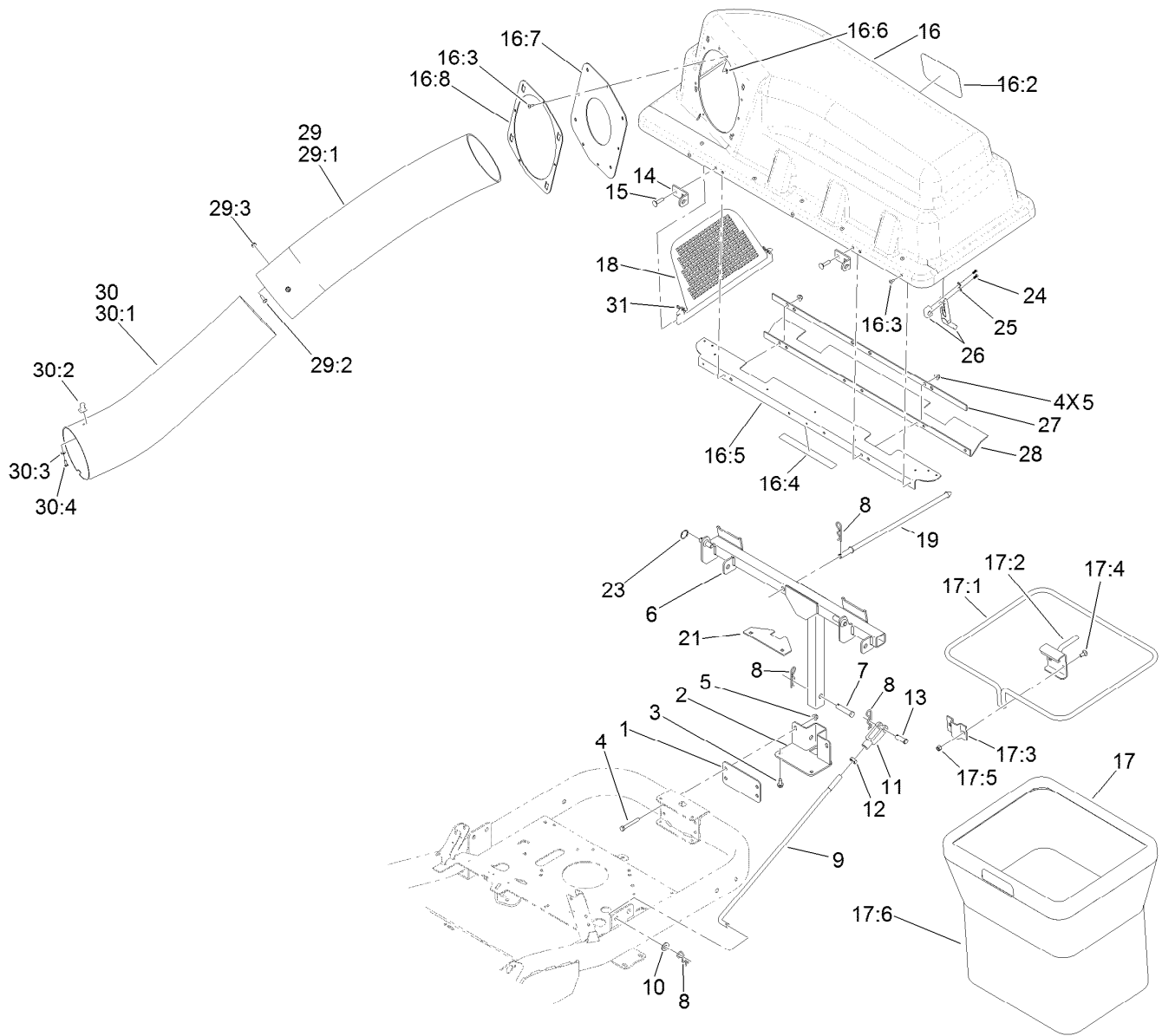
Twin Bagger and Hood Assembly 4
Weight Assembly 6



Twin Bagger and Hood Assembly

Ref.	Part Number	Qty.	Description	Ref.	Part Number	Qty.	Description
1	117-5355-03	1	Plate	16:4	109-6809	1	Decal-Caution, Bagger
2	120-7120-03	1	Support-Bagger	16:5	116-5071-03	1	Stiffener-Bagger, Top
3	32144-70	2	Screw-HWHTF	16:6	9202704	4	Washer
4	322-12	2	Screw-HH	16:7	116-4478	1	Gasket
5	104-8300	6	Nut-Flange, NI	16:8	112-4000-03	1	Ring-Retainer
6	125-1811-03	1	Pivot Frame ASM	17	112-3994	2	Bag ASM
7	92-2739	1	Pin-Clevis	17:1	114972-03	1	Frame-Bag
8	3290-355	6	Pin-Hair	17:2	112-4012-03	1	Hanger ASM
9	115-2645	2	Rod-Bagger	17:3	114974-03	1	Clamp
10	3256-26	2	Washer-Flat	17:4	3230-1	2	Bolt-CARR
11	100-7338	2	Clevis	17:5	3296-29	2	Nut-Lock, NI
12	3220-5	2	Nut-Jam	17:6	110-6674	1	Bag
13	104-3634	2	Pin-Clevis	18	112-3993	1	Screen-Bagger
14	112-3987	2	Bracket-Pivot, Hopper	19	116-6491	1	Rod-Hold Down, Hood
15	3230-3	4	Screw-CARR	21	117-5397-03	1	Plate-Spacer
16	121-3215	1	Bagger Hood ASM	23	120-7127	1	Pin-Cotter, Circular
16:2	99-4693	1	Decal	24	107-7461	2	Screw-Plastite
16:3	114439	12	Rivet-Pop	25	3256-77	2	Washer-Flat

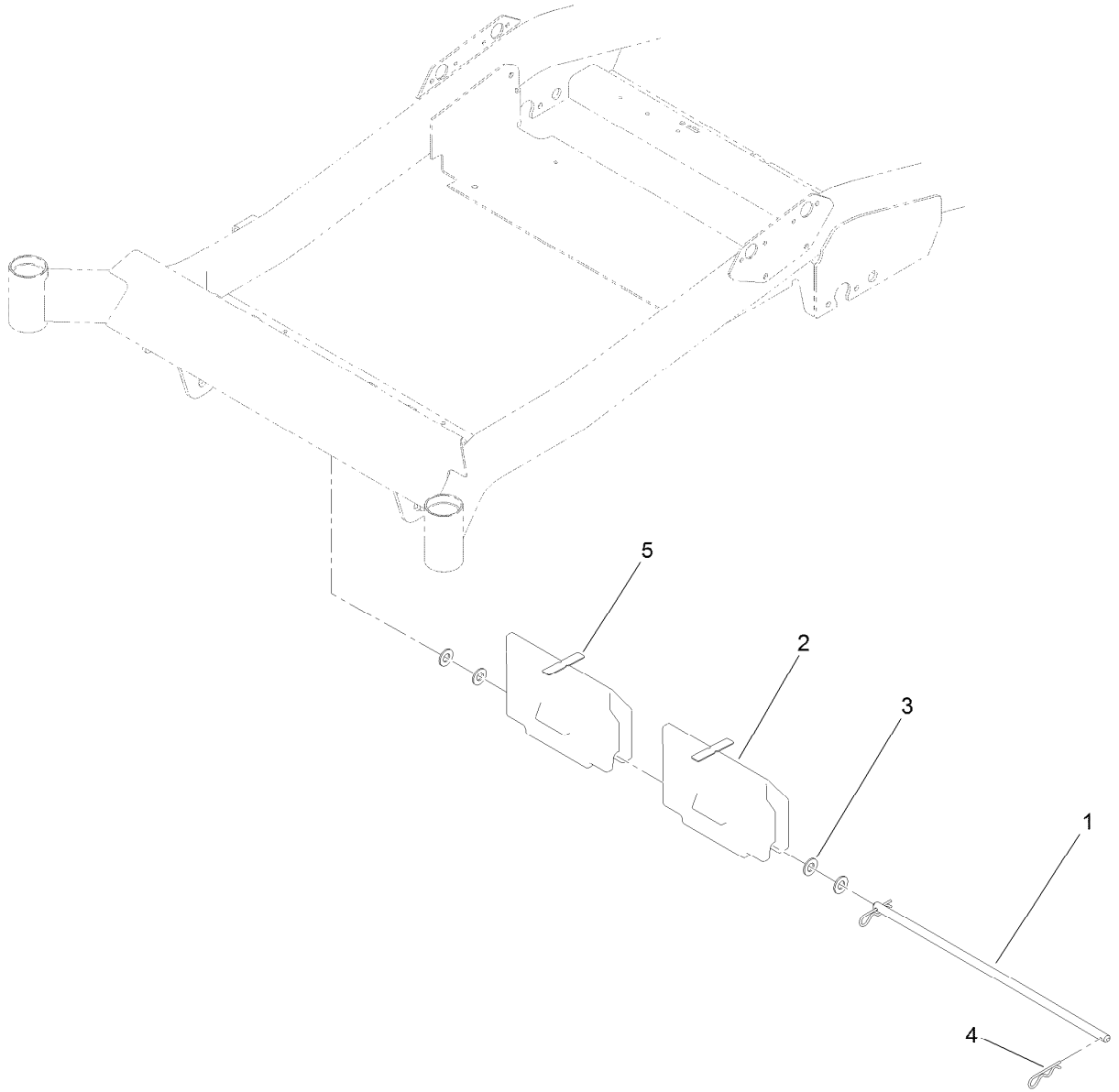
● Kit No. 103-4188 - Contains catch, rubber latch, and mounting hardware



Twin Bagger and Hood Assembly (continued)

Ref.	Part Number	Qty.	Description	Ref.	Part Number	Qty.	Description
26	116-4992	1	Latch-Rubber	30	116-4128	1	Lower Tube ASM
27	116-4127-03	1	Plate-Backing	30:1	116-4495	1	Tube-Lower
28	116-4126	1	Seal	30:2	103-4081	2	Latch-Keeper ●
29	125-5464	1	Upper Tube ASM	30:3	3256-14	2	Washer-Flat
29:1	125-5568	1	Tube-Upper	30:4	3290-500	2	Screw-PPH
29:2	1-803076	2	Screw	31	3290-307	2	Pin-Hair
29:3	104-7201	2	Nut-HF				

● Kit No. 103-4188 - Contains catch, rubber latch, and mounting hardware



Weight Assembly

<i>Ref.</i>	<i>Part Number</i>	<i>Qty.</i>	<i>Description</i>
1	115-5030	1	Rod-Deck, Pivot
2	115-9640-03	2	Weight-Bagger
3	3256-26	4	Washer-Flat
4	3290-355	2	Pin-Hair
5	112-4033	2	Bumper-Pad

Notes:



Count on it.