



Count on it.

Parts Catalog

48cm Super Recycler[®] Lawn Mower

Model No. 20837—Serial No. 313000001 and Up



Ordering Replacement Parts

To order replacement parts, please supply the part number, the quantity, and the description of each part desired.

Understanding Reference Numbers

Each identified part in an illustration has a reference number. The reference number for a part also appears in the parts list, along with other information about the part.

This catalog uses two special reference number formats, one to indicate parts in a service assembly and another to indicate the quantity of a given part in an illustration.

Service Assembly Reference Numbers

Parts in service assemblies have reference numbers in the form a:b. The a represents the reference number of the entire service assembly and the b represents a sequential number unique to each part within the service assembly.

For example, a wheel assembly might be identified by reference number 6, the tire by 6:1, the valve by 6:2, and the wheel by 6:3. When you order the assembly identified by reference number 6, you receive all parts identified by reference numbers 6:1, 6:2, and 6:3. However, you may also order any part individually. Reference numbers of this type appear in illustration and in parts lists.

Reference Numbers Indicating Quantity

In an illustration, if a reference number indicates more than one part, the reference number has the form nX y. The n represents the quantity of the part, the X is the multiplication symbol, and the y represents the reference number.

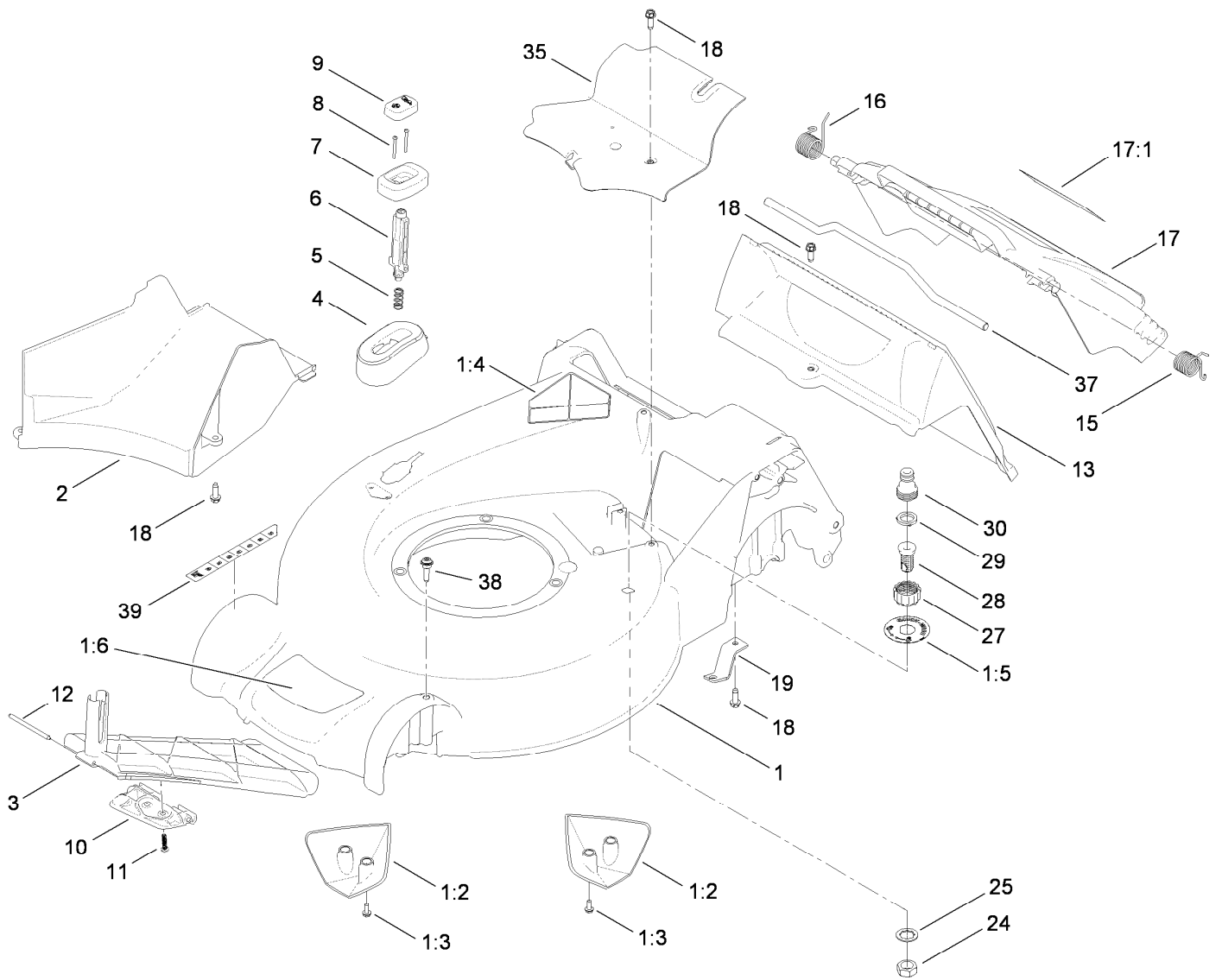
For example, in an illustration, the reference number 2X 37 means that two of the parts identified by reference number 37 are indicated.

List of Abbreviations

AR: as required	HLH: hex lag head	PTO: power-take-off
ASM: assembly	HOC: height-of-cut	RH: right hand
BBC: blade brake control	HSBH: hex socket button head	ROPS: roll-over protection system
BHTF: button head thread forming	HSFH: hex socket flat head	RRB: rear roller brush
CARR: carriage	HSH: hex socket head	SFH: slotted fillister head
CCW: counter clockwise	HWH: hex washer head	SHH: slotted hex head
CW: clockwise	HWHTF: hex washer head thread forming	SHWH: slotted hex washer head
DEG: degrees	HYD: hydraulic	SPH: slotted pan head
DPA: Dual Point Adjustment	LH: left hand	SQH: square head
ECM: electronic control module	LP: Liquefied Petroleum Gas	SRH: slotted round head
EXT: external	LPG: Liquefied Petroleum Gas	STD: standard
FH: flat head	NI: nylon insert	TAP: self tapping
GA: gauge	NPTF: national pipe thread fine	TTH: torx truss head
HD: heavy-duty	PFH: phillips flat head	
HF: hex flange	PPH: phillips pan head	
HH: hex head	PPHTF: phillips pan head thread forming	
HHF: hex head flange	PRH: phillips round head	
HHFTF: hex head flange thread forming	PTH: phillips truss head	
HJ: hex jam		

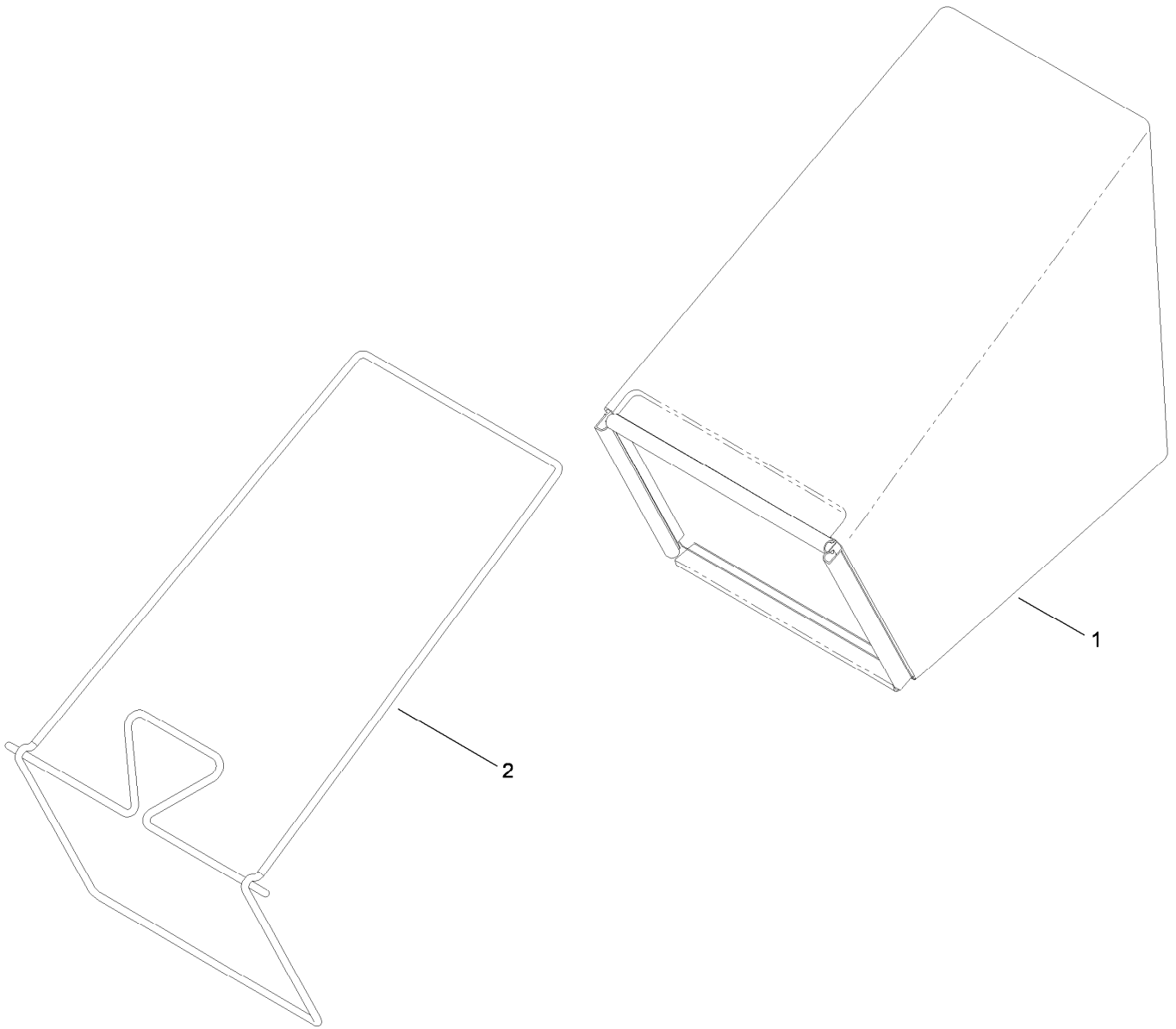
Contents

Housing and Rear Door Assembly	4
Bag and Frame Assembly.....	5
Engine and Blade Assembly.....	6
Traction, Height-of-Cut and Suspension Assembly.....	7
Transmission and Belt Assembly.....	8
Handle Assembly.....	9
Attachments and Accessories	10



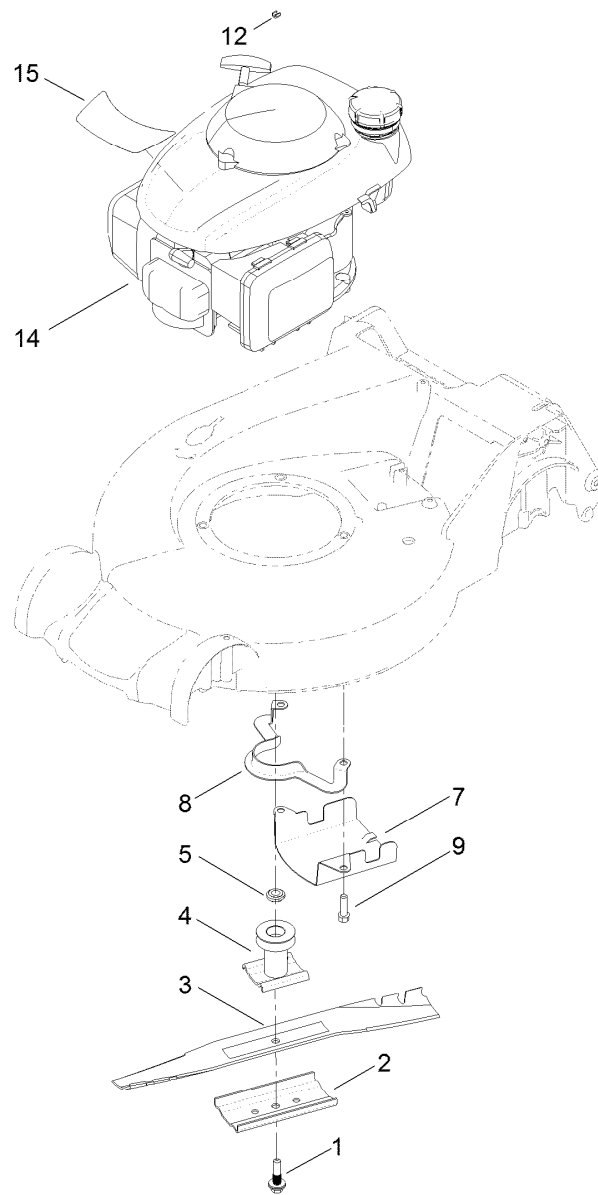
Housing and Rear Door Assembly

Ref.	Part Number	Qty.	Description	Ref.	Part Number	Qty.	Description
1	117-4093	1	Housing ASM	15	115-2859	1	Spring-Torsion
1:2	99-6485	2	Kicker-Front	16	114-7924	1	Spring-Torsion
1:3	32144-1	4	Screw-Taptite	17	117-4085	1	Rear Door ASM
1:4	112-8760	1	Decal-Danger	17:1	114-7982	1	Decal-Warning
1:5	112-8867	1	Decal-Port, Washout	18	49-2040	5	Screw-HWHTF
1:6	117-9358	1	Decal-Housing	19	117-9385	1	Bracket-Cable, Traction
2	117-4063	1	Ramp-Discharge	24	3218-6	1	Nut-Jam
3	117-4064	1	Door-Recycle	25	3254-5	1	Washer-Tooth, Internal
4	117-4065	1	Cover-Door, Recycle	27	112-6401	1	Coupling-Hose, Washout Port
5	117-1031	1	Spring-Compression	28	112-6400	1	Port-Washout
6	110-7129	1	Latch-Recycle	29	112-6438	1	Washer-Seal, Washout Port
7	110-7136	1	Housing-Knob	30	112-6437	1	Adapter-Connect, Quick
8	110-7143	2	Screw-Torx, Pan Head	35	117-4062	1	Cover-Belt
9	119-2254	1	Knob-Recycle	37	117-9378	1	Rod-Deflector
10	119-2262	1	Hinge-Door, Recycle	38	119-2267	1	Screw-Shoulder, BHTF
11	108-7476	2	Screw-Plastite	39	119-2283	1	Decal-HOC
12	119-2263	1	Pin-Hinge				
13	114-2668	1	Chute				



Bag and Frame Assembly

<i>Ref.</i>	<i>Part Number</i>	<i>Qty.</i>	<i>Description</i>
1	117-9365	1	Grass Bag ASM
2	117-9363-03	1	Frame-Bag

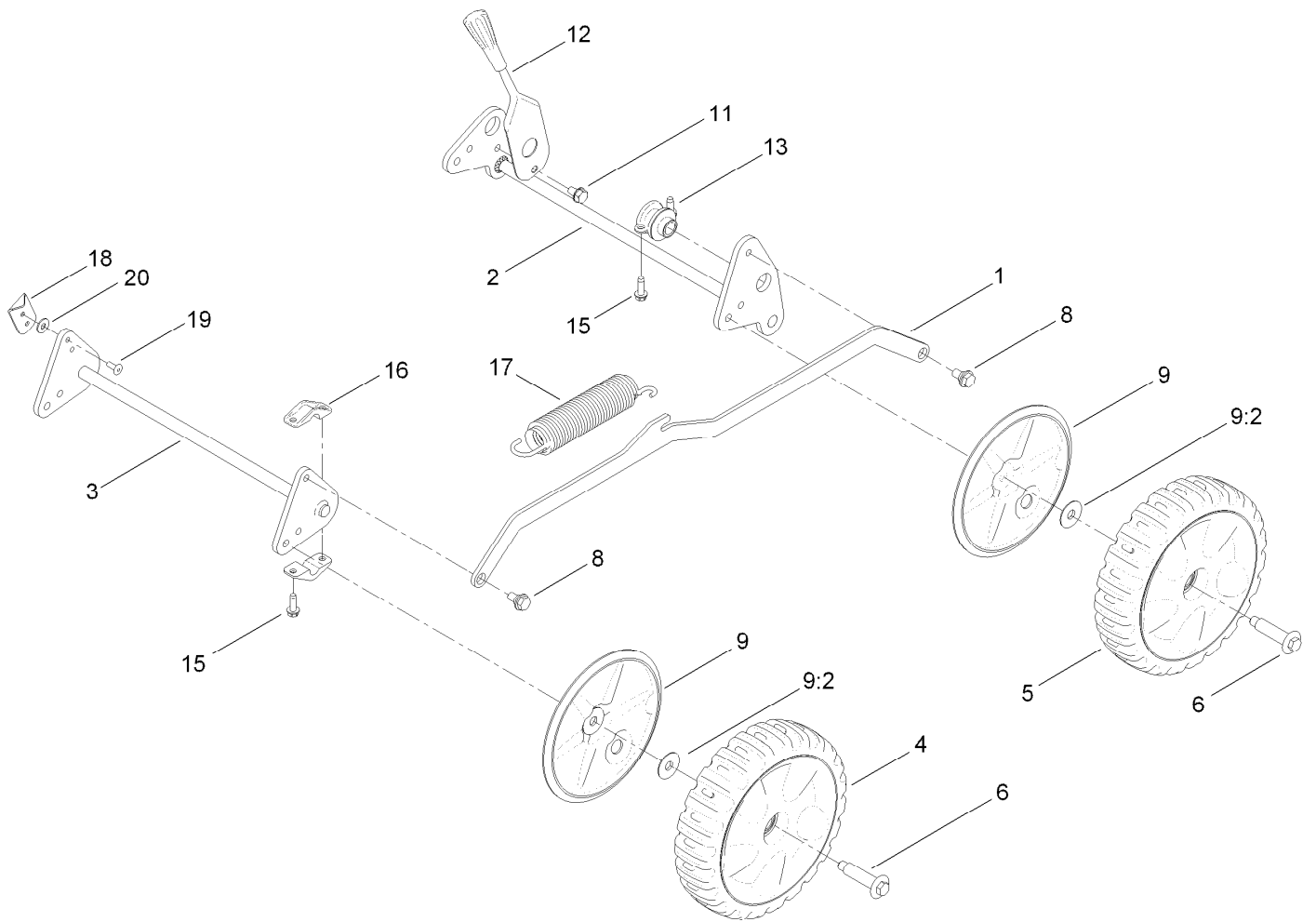


Engine and Blade Assembly

Ref.	Part Number	Qty.	Description
1	117-5270	1	Bolt-Blade
2	108-3766-03	1	Support-Blade
3	110-7080	1	Blade
4	114-2774	1	Driver-Blade
5	106-3999	1	Spacer-Driver
7	107-7489-03	1	Shield-Grass
8	108-8110-03	1	Guide-Belt
9	92-1648	3	Screw-Mount, Engine
12	92-1701	1	Stop-Rope
14		1	Engine-Honda, Gcv160A0-S3Te ●■
15	120-1949	1	Decal-Engine

● Not serviced separately

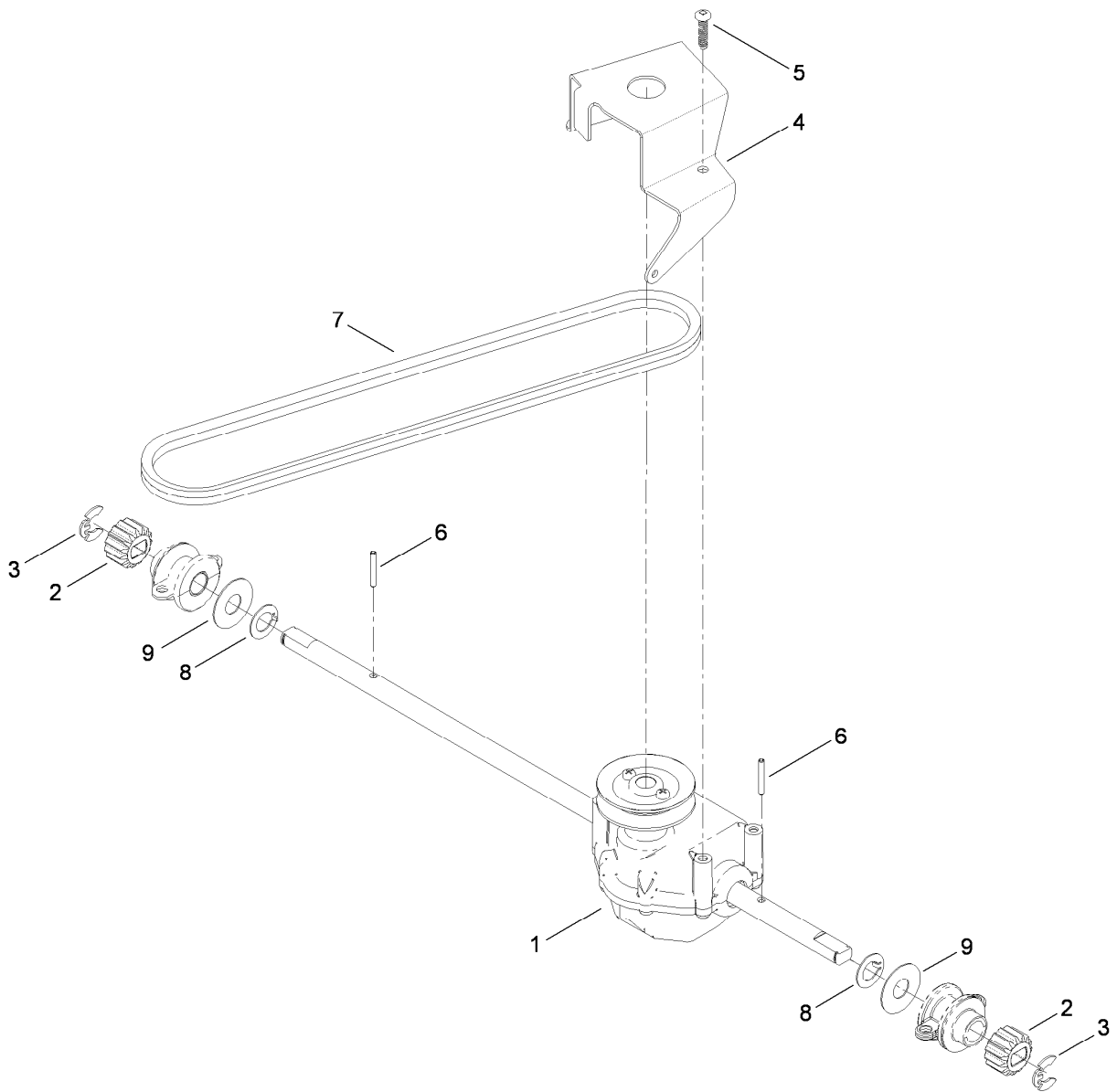
■ Obtain parts from www.honda-engines.com



Traction, Height-of-Cut and Suspension Assembly

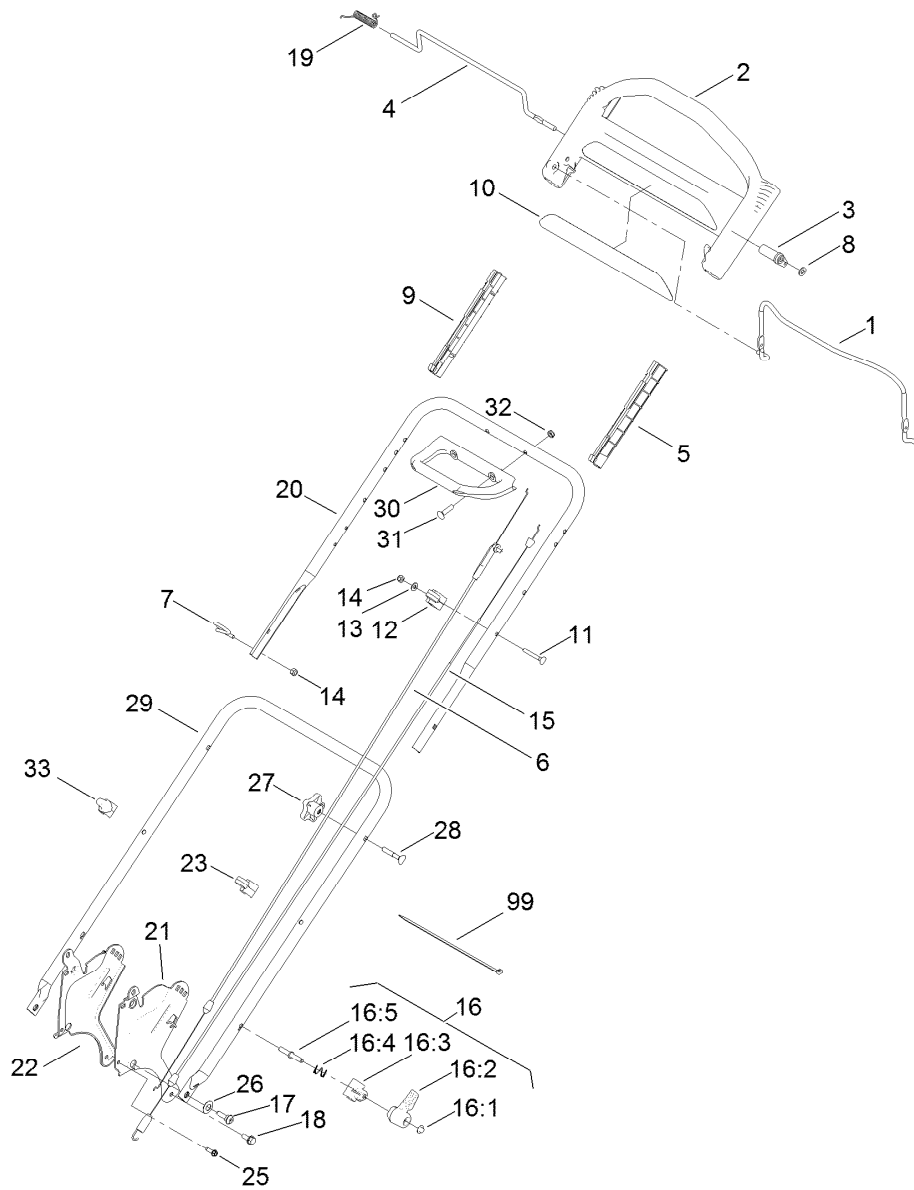
Ref.	Part Number	Qty.	Description
1	117-4066-01	1	Bar-Cross, HOC
2	120-0196-03	1	Bar-Pivot, Rear
3	120-3902-03	1	Bar-Pivot, Front
4	117-4082	2	8 Inch Wheel ASM
5	117-4083	2	8 Inch Wheel And Gear ASM
6	614650	4	Bolt-Shoulder
8	27-0411	2	Screw-Shoulder
9	117-4088	4	Wheel Cover ASM
9:2	614426	1	Washer-Stepped

Ref.	Part Number	Qty.	Description
11	32104-82	1	Screw-HHF
12	117-4084	1	Handle-Lift Assist
13	119-2278	2	Bushing ASM
15	49-2040	8	Screw-HWHTF
16	100-1500	4	Mount-Axle, Front
17	119-2265	1	Spring-Extension
18	119-2286	1	Indicator-HOC
19	114439	2	Rivet-Pop
20	3256-1	2	Washer-Flat



Transmission and Belt Assembly

Ref.	Part Number	Qty.	Description
1	117-4086	1	Transmission-Gearbox
2	110-9417	2	Gear-Pinion, 15T
3	65-2720	2	Ring-Clip, Locking
4	114-7977-03	1	Bracket-Transmission
5	108-7476	3	Screw-Plastite
6	110-7192	2	Pin-Roll
7	110-9429	1	V-Belt
8	112-3911	2	Washer-Thrust, Keyed
9	110-7179	2	Washer-Plain



Handle Assembly

Ref.	Part Number	Qty.	Description	Ref.	Part Number	Qty.	Description
1	104-8679-03	1	Bail-Brake	16:4	115-2858	1	Spring-Compression
2	104-8678	1	Handle-Control	16:5	114-2675	1	Rod-Release
3	99-1589	1	Lever-Traction	17	119-2267	2	Screw-Shoulder, BHTF
4	99-1588	1	Bar-Control, Traction	18	32144-11	2	Screw-HWHTF
5	105-6842	1	Guide-LH	19	121-9118	1	Spring-Torsion
6	120-3921	1	Cable-Brake	20	117-9376-05	1	Handle-Upper
7	86-9671	1	Guide-Rope	21	114-2671-03	1	Bracket-Handle, LH
8	3256-23	1	Washer-Flat	22	114-2672-03	1	Bracket-Handle, RH
9	105-6841	1	Guide-RH	23	114-7988	1	Guide-Cable
10	120-3911	1	Decal-Ads, Handle	25	49-2040	2	Screw-HWHTF
11	95-4453	1	Screw	26	112-9972	2	Washer-Conical, Spring
12	99-5239	1	Anchor-Cable	27	117-5976	2	Knob-Handle, Locking
13	3256-1	1	Washer-Flat	28	112-8876	2	Screw-Handle
14	3296-73	2	Nut-Lock, NI	29	117-9380-05	1	Handle-Lower
15	117-9389	1	Cable-Traction	30	99-1591	1	Handle-Assist, Traction
16	115-2860	2	Quick Release ASM	31	99-6005	2	Bolt-Carriage
16:1	109-0917	1	Nut-Push	32	99-6007	2	Nut-Lock, NI
16:2	114-7995	1	Lever	33	117-9384	1	Guide-Rope, Flexible
16:3	114-7996	1	Anchor-Spring	99	614249	2	Tie-Cable

Attachments and Accessories

For 20837 48cm Super Recycler Lawn Mower

Product Name	Model/Part
Lawnmower Cover.....	490-7462
Plain Walk Mower Cover.....	490-7463

Notes:



Count on it.