



**Count on it.**

**Parts Catalog**

**48cm Recycler® Lawn Mower**

Model No. 20952—Serial No. 313000001 and Up



# Ordering Replacement Parts

To order replacement parts, please supply the part number, the quantity, and the description of each part desired.

## Understanding Reference Numbers

Each identified part in an illustration has a reference number. The reference number for a part also appears in the parts list, along with other information about the part.

This catalog uses two special reference number formats, one to indicate parts in a service assembly and another to indicate the quantity of a given part in an illustration.

## Service Assembly Reference Numbers

Parts in service assemblies have reference numbers in the form a:b. The a represents the reference number of the entire service assembly and the b represents a sequential number unique to each part within the service assembly.

For example, a wheel assembly might be identified by reference number 6, the tire by 6:1, the valve by 6:2, and the wheel by 6:3. When you order the assembly identified by reference number 6, you receive all parts identified by reference numbers 6:1, 6:2, and 6:3. However, you may also order any part individually. Reference numbers of this type appear in illustration and in parts lists.

## Reference Numbers Indicating Quantity

In an illustration, if a reference number indicates more than one part, the reference number has the form nX y. The n represents the quantity of the part, the X is the multiplication symbol, and the y represents the reference number.

For example, in an illustration, the reference number 2X 37 means that two of the parts identified by reference number 37 are indicated.

# List of Abbreviations

**AR:** as required

**ASM:** assembly

**BBC:** blade brake control

**BHTF:** button head thread forming

**CARR:** carriage

**CCW:** counter clockwise

**CW:** clockwise

**DEG:** degrees

**DPA:** Dual Point Adjustment

**ECM:** electronic control module

**EXT:** external

**FH:** flat head

**GA:** gauge

**HD:** heavy-duty

**HF:** hex flange

**HH:** hex head

**HHF:** hex head flange

**HHFTF:** hex head flange thread forming

**HJ:** hex jam

**HLH:** hex lag head

**HOC:** height-of-cut

**HSBH:** hex socket button head

**HSFH:** hex socket flat head

**HSH:** hex socket head

**HWH:** hex washer head

**HWHTF:** hex washer head thread forming

**HYD:** hydraulic

**LH:** left hand

**LP:** Liquefied Petroleum Gas

**LPG:** Liquefied Petroleum Gas

**NI:** nylon insert

**NPTF:** national pipe thread fine

**PFH:** phillips flat head

**PPH:** phillips pan head

**PPHTF:** phillips pan head thread forming

**PRH:** phillips round head

**PTH:** phillips truss head

**PTO:** power-take-off

**RH:** right hand

**ROPS:** roll-over protection system

**RRB:** rear roller brush

**SFH:** slotted fillister head

**SHH:** slotted hex head

**SHWH:** slotted hex washer head

**SPH:** slotted pan head

**SQH:** square head

**SRH:** slotted round head

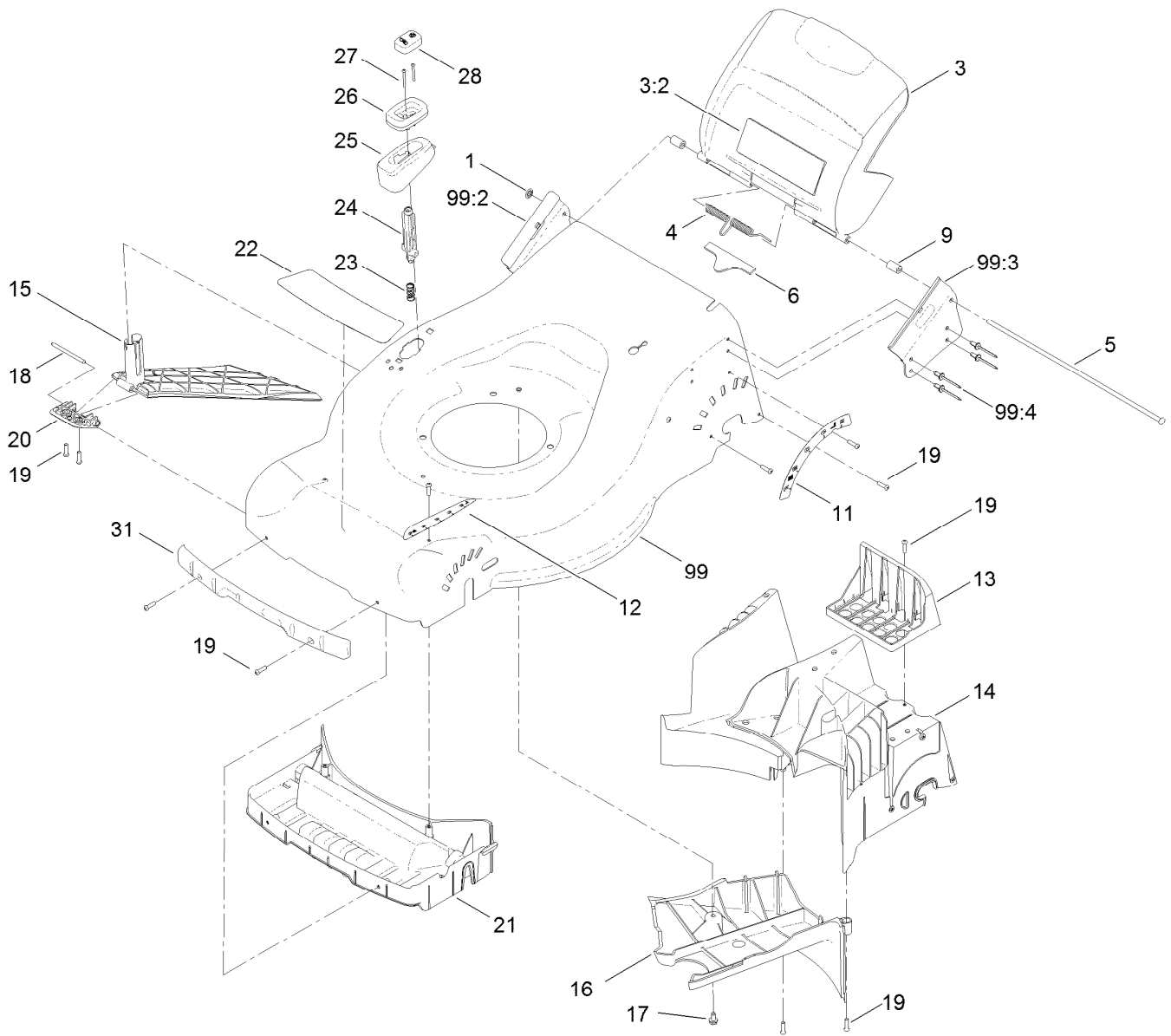
**STD:** standard

**TAP:** self tapping

**TTH:** torx truss head

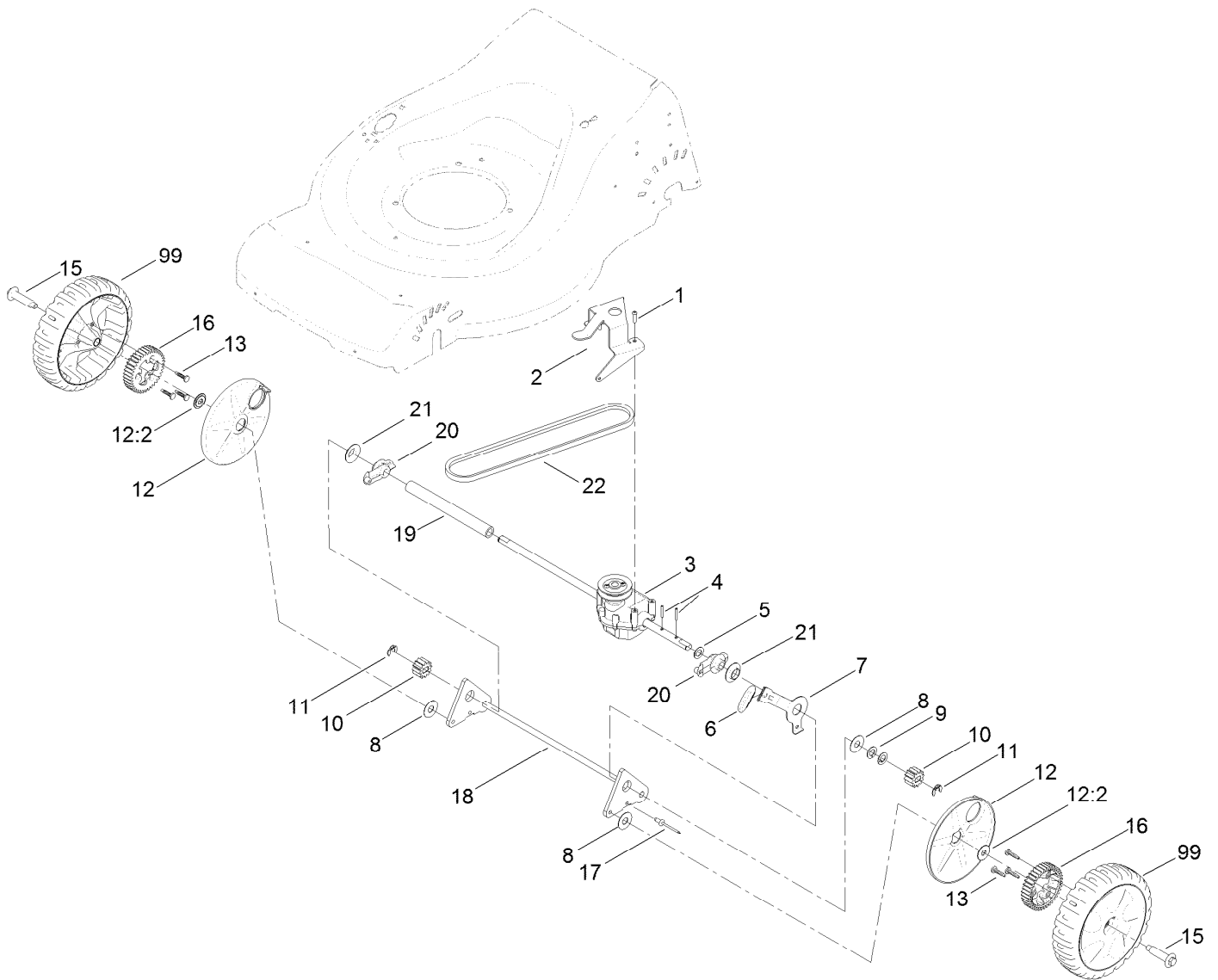
# Contents

Housing Assembly .....	4
Transmission and Rear Wheel Drive Assembly .....	5
Front Wheel and Height-of-Cut Assembly .....	6
Blade Assembly .....	7
Handle Assembly .....	8
Bag Assembly .....	9
Engine and Electrical Assembly .....	10
Shroud, Flywheel and Fuel Tank Assembly .....	11
Dipstick, Brake and Governor Arm Assembly .....	12
Carburetor, Muffler, Air Cleaner and Valve Cover Assembly .....	13
Attachments and Accessories .....	14



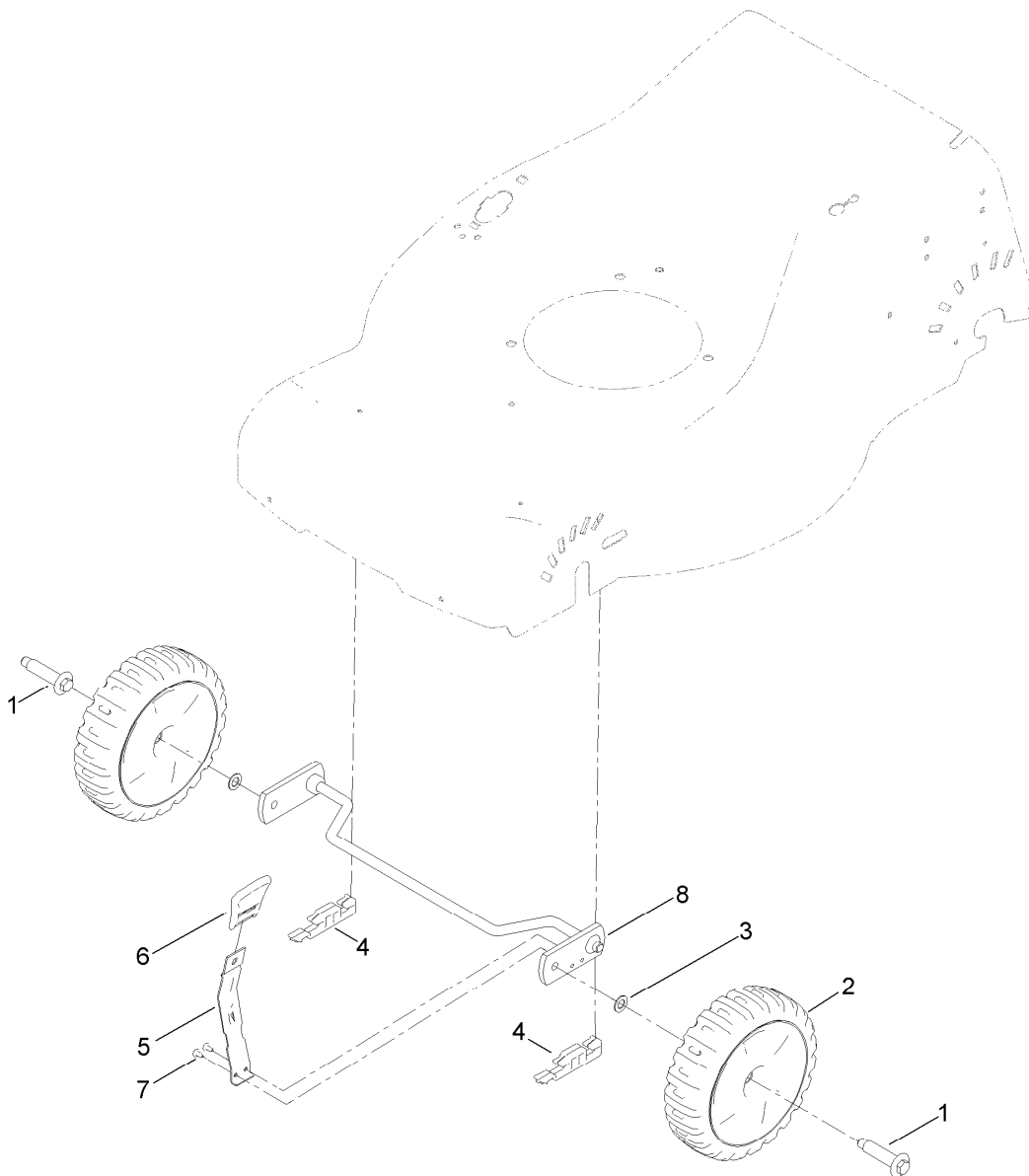
## Housing Assembly

Ref.	Part Number	Qty.	Description	Ref.	Part Number	Qty.	Description
1	110-7188	1	Washer-Starlock, Push	19	110-1271	16	Screw-Torx, Pan Head
3	120-3901	1	Rear Door ASM	20	110-7095	1	Hinge-Door, Recycle
3:2	110-7126	1	Decal-Warning	21	110-7066	1	Baffle-Front
4	110-7107	1	Spring-Torsion	22	120-0192	1	Decal-Deck
5	120-0153	1	Rod-Pivot	23	110-7141	1	Spring-Compression
6	120-3919	1	Seal-Rubber	24	110-7129	1	Latch-Recycle
9	120-0173	2	Spacer-Plastic	25	110-7097	1	Cover-Door, Recycle
11	120-0193	1	Decal-HOC, Rear	26	110-7136	1	Housing-Knob
12	110-7178	1	Decal	27	110-7143	2	Screw-Torx, Pan Head
13	120-0175	1	Tray-Battery	28	119-2254	1	Knob-Recycle
14	120-0157	1	Baffle-Rear	31	110-7067	1	Bumper-Front
15	110-7094	1	Door-Recycle	99	120-0199	1	Deck ASM
16	110-7109	1	Cover-Belt	99:2	120-0150	1	Bracket-Handle, Right
17	110-7170	1	Screw-HH	99:3	120-0151	1	Bracket-Handle, Left
18	110-7108	1	Pin-Hinge	99:4	110-7193	8	Rivet-Pop



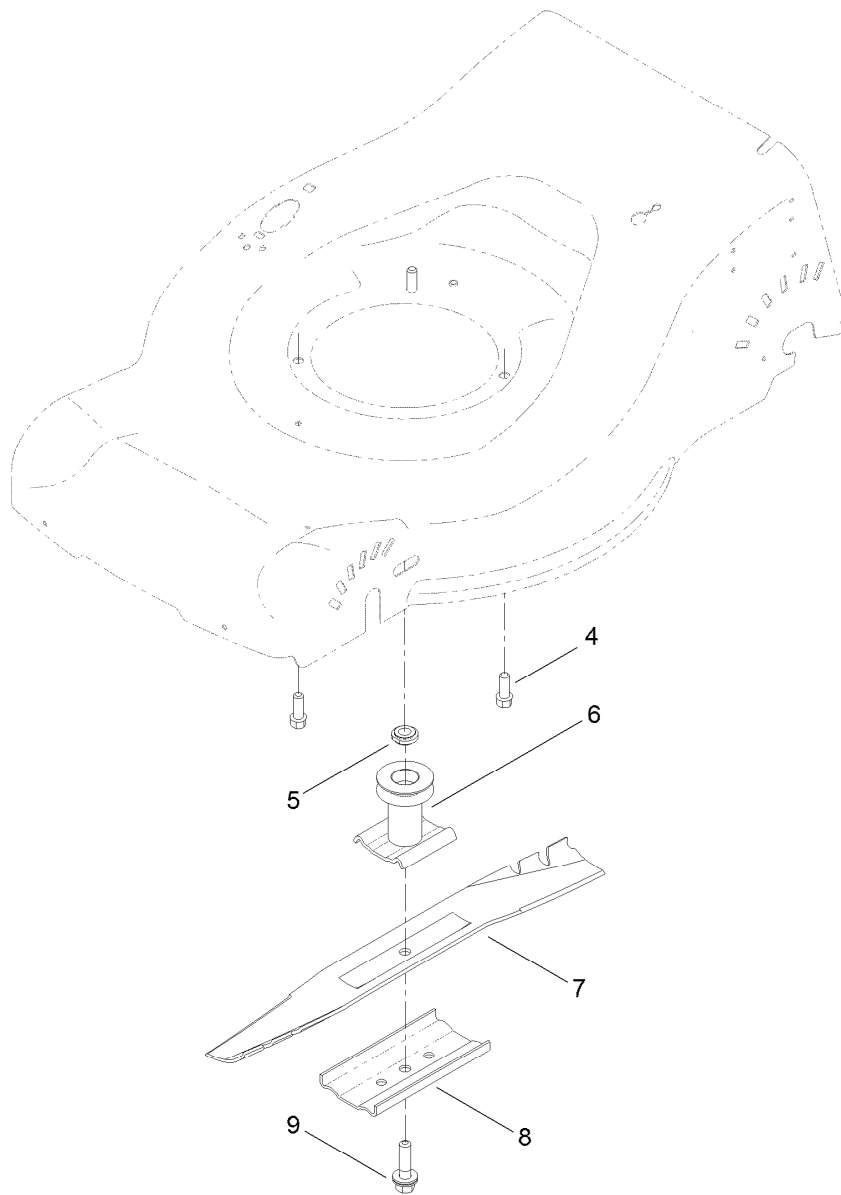
## Transmission and Rear Wheel Drive Assembly

Ref.	Part Number	Qty.	Description	Ref.	Part Number	Qty.	Description
1	110-1271	3	Screw-Torx, Pan Head	12:2	614426	1	Washer-Stepped
2	110-7158	1	Bracket-Gear Case	13	27-6260	6	Screw-Drive
3	120-0181	1	Transmission	15	614650	2	Bolt-Shoulder
4	110-7192	2	Pin-Roll	16	115-4666	2	Gear-Wheel, 38T
5	112-3911	2	Washer-Thrust, Keyed	17	110-7193	1	Rivet-Pop
6	110-7125	1	Knob-HOC	18	120-0178	1	Rear Pivot Bar ASM
7	120-0191	1	Arm-Spring, Rear	19	115-3850	1	Spacer
8	110-7179	3	Washer-Plain	20	110-7112	2	Bushing-Camlock
9	110-7191	1	Washer-Thrust	21	110-7171	2	Spacer-Flange
10	115-4668	2	Gear-Pinion, 12T	22	110-9429	1	V-Belt
11	65-2720	2	Ring-Clip, Locking	99	119-7068	2	8 Inch Wheel And Gear ASM
12	110-1792	2	Wheel Cover ASM				ASM



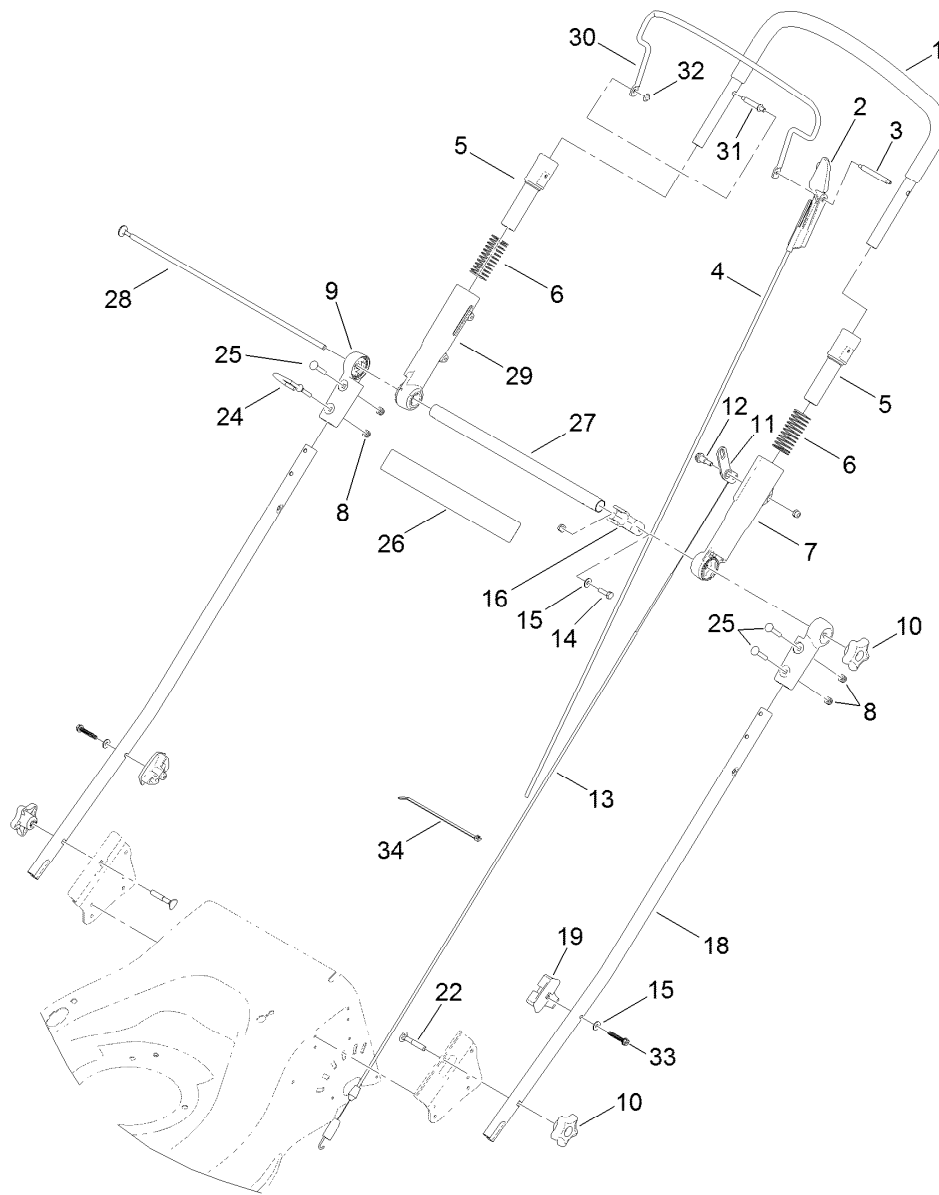
## Front Wheel and Height-of-Cut Assembly

<i>Ref.</i>	<i>Part Number</i>	<i>Qty.</i>	<i>Description</i>
1	614650	2	Bolt-Shoulder
2	119-3777	2	7 Inch Wheel And Tire ASM
3	40-1940	2	Washer
4	110-7068	2	Clamp-Axle, Front
5	120-0168	1	Arm-Spring
6	110-7125	1	Knob-HOC
7	110-7175	2	Screw-Pan Head, TAP
8	120-3942	1	Front Pivot Bar ASM



## Blade Assembly

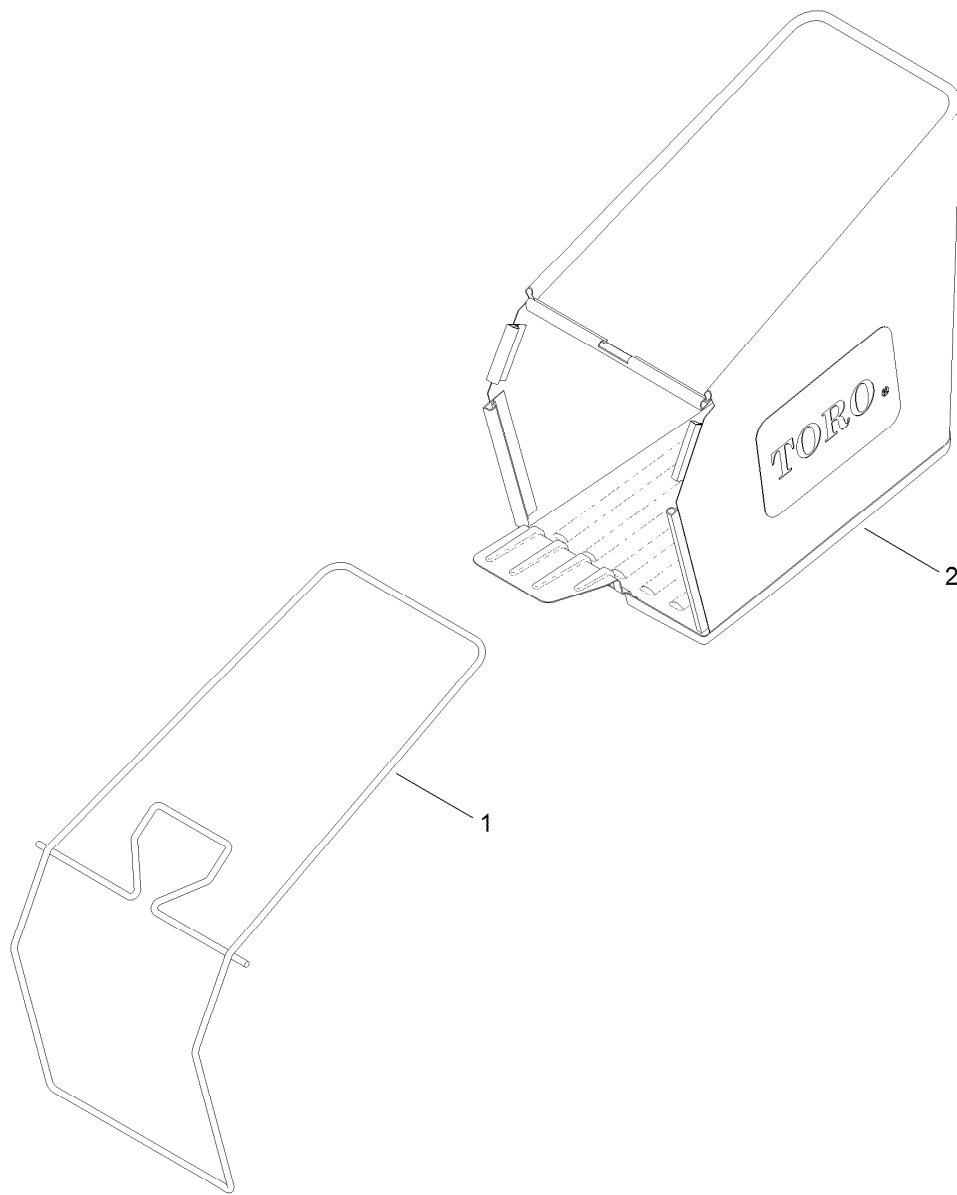
<i>Ref.</i>	<i>Part Number</i>	<i>Qty.</i>	<i>Description</i>
4	92-1624	3	Screw-HWH
5	106-3999	1	Spacer-Driver
6	106-3987	1	Blade Driver ASM
7	110-7080	1	Blade
8	108-3766	1	Support-Blade
9	105-8579	1	Bolt-Blade



## Handle Assembly

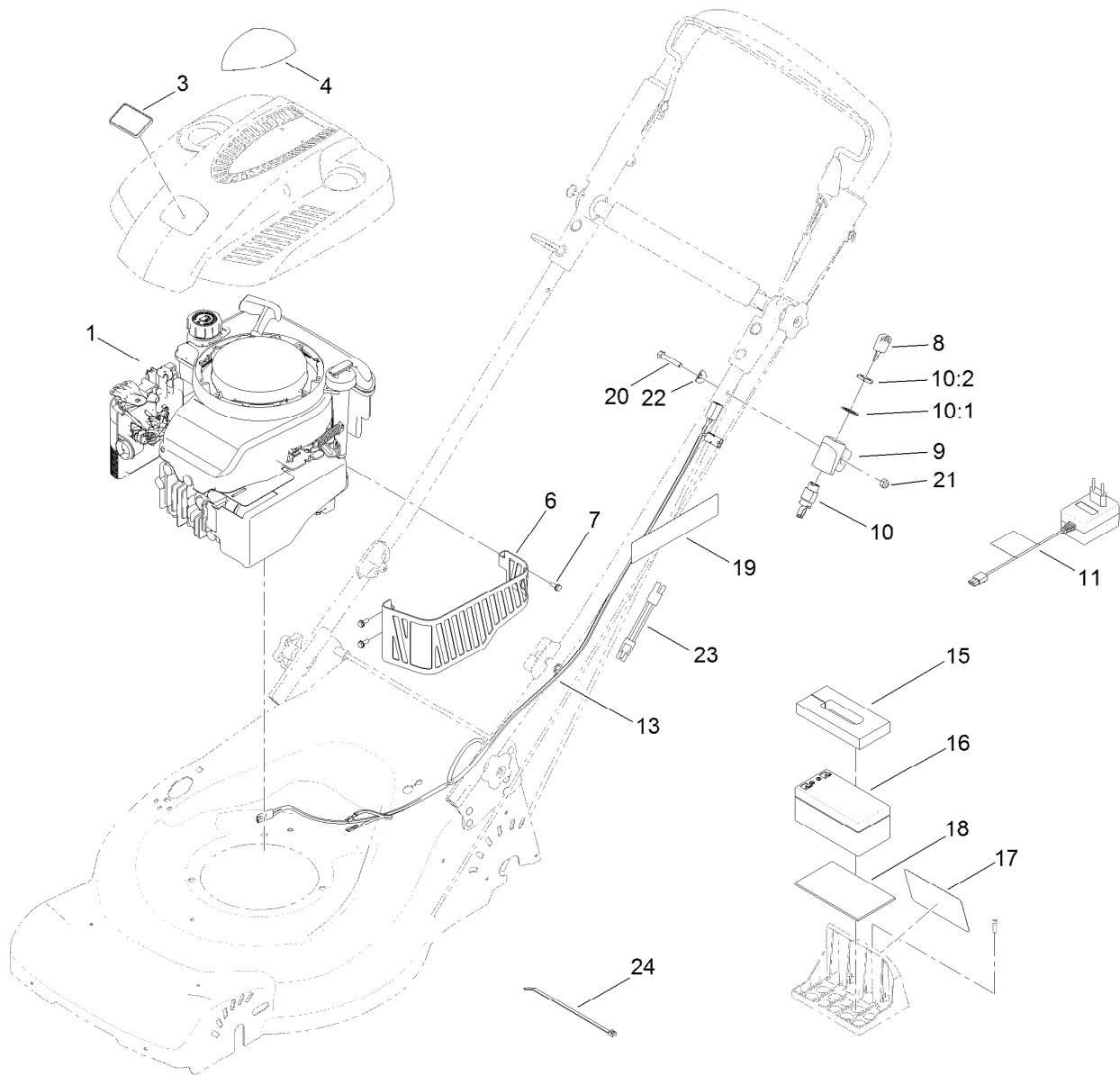
<i>Ref.</i>	<i>Part Number</i>	<i>Qty.</i>	<i>Description</i>	<i>Ref.</i>	<i>Part Number</i>	<i>Qty.</i>	<i>Description</i>
1	108-0974	1	Upper Handle ASM	16	112-8801	1	Clamp-Cable
2	112-8764	1	Stop-Pivot	18	120-0187	2	Tube-Handle
3	108-1008	1	Pin-Bail, LH	19	112-3928	2	Anchor-Bag
4	107-3903	1	Cable-Brake	22	112-8876	2	Screw-Handle
5	112-8754	2	Sleeve-Inner	24	107-3908	1	Guide-Rope, Upper
6	107-3869	2	Spring-Compression	25	108-0988	3	Screw-CARR
7	112-1544	1	Sleeve-Outer, LH	26	120-3907	1	Decal-Ads
8	3296-73	6	Nut-Lock, NI	27	107-3867-03	1	Tube-Cross
9	107-3865	2	Mount-Handle, Lower	28	107-3871	1	Rod-Threaded
10	117-5976	3	Knob-Handle, Locking	29	112-1545	1	Sleeve-Outer, RH
11	107-3893	1	Lever-Traction	30	110-1819-03	1	Bail-Brake
12	104-0858	1	Bolt-Shoulder	31	108-0959	1	Pin-Handle
13	110-9162	1	Cable-Traction	32	108-9378	1	Retainer-Push On
14	321-5	1	Screw-HH	33	108-4946	2	Screw-Plastite
15	3256-1	3	Washer-Flat	34	614249	1	Tie-Cable





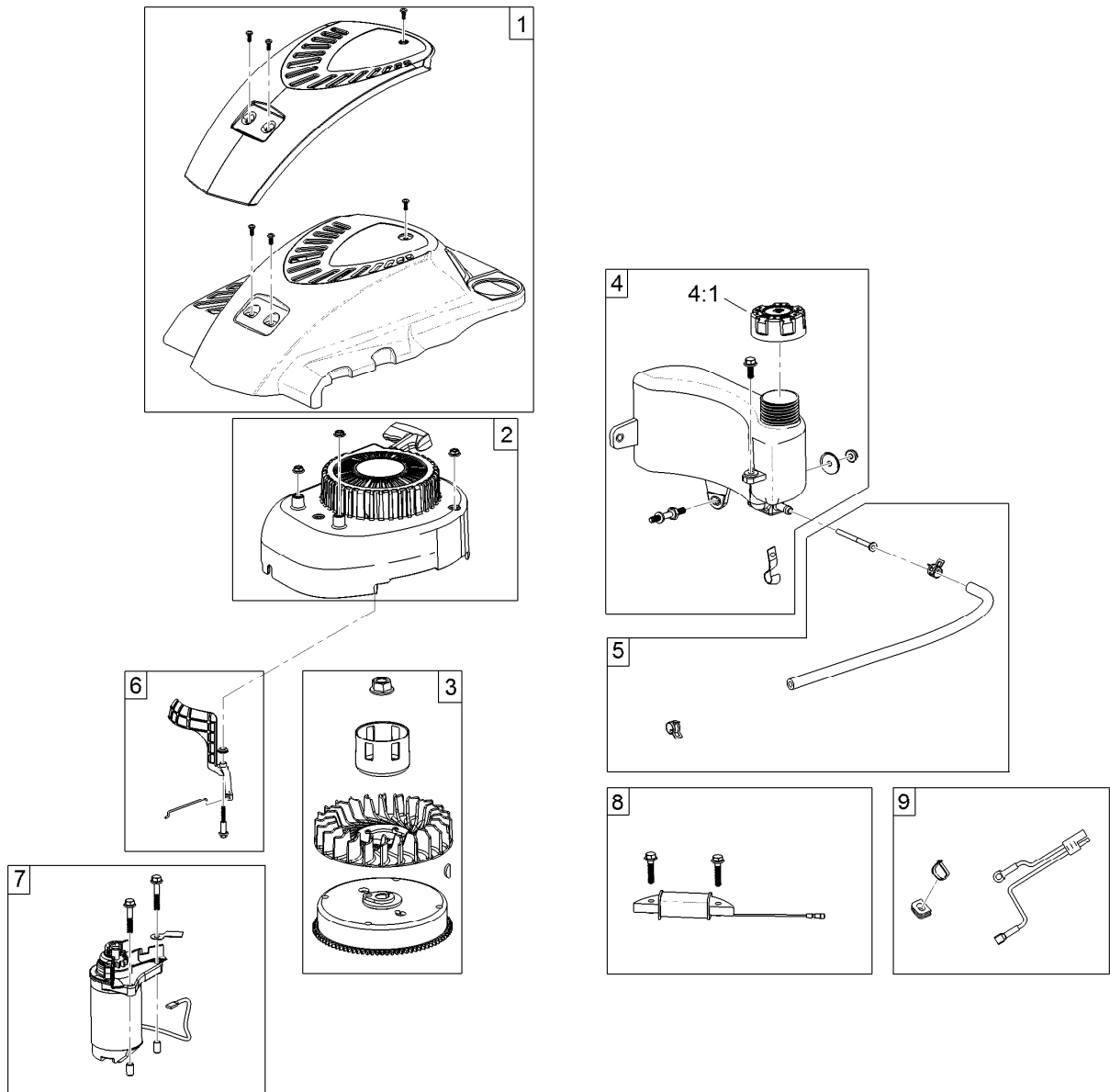
## Bag Assembly

<i>Ref.</i>	<i>Part Number</i>	<i>Qty.</i>	<i>Description</i>
1	114-5374	1	Frame-Bag
2	110-7255	1	Bag ASM



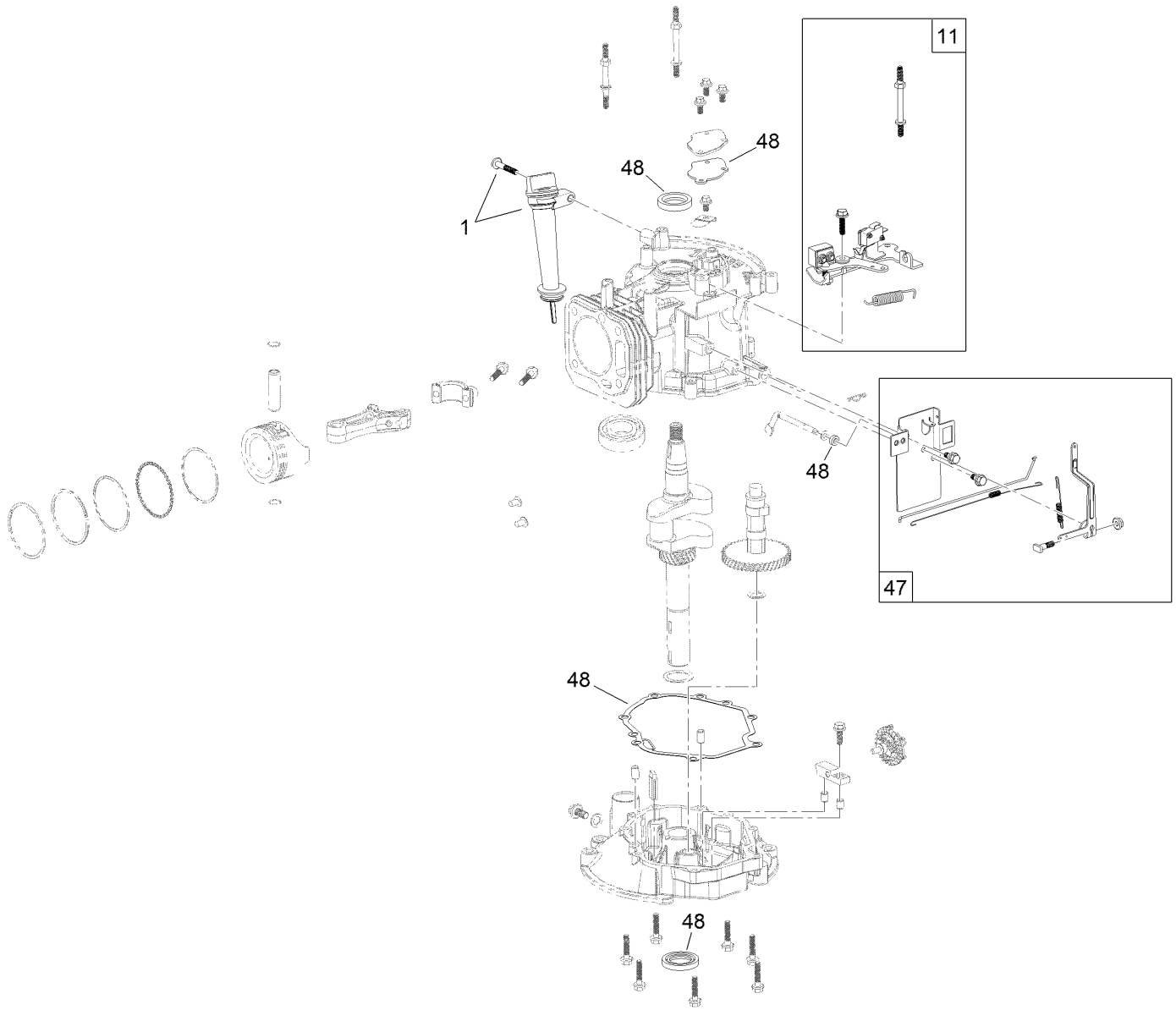
## Engine and Electrical Assembly

Ref.	Part Number	Qty.	Description	Ref.	Part Number	Qty.	Description
1	121-4201	1	Engine-Lc1P65Fa	13	125-5063	1	Harness-Wire
3	120-0183	1	Plate-Logo	15	120-0189	1	Foam-Block
4	120-1938	1	Decal-Shroud, Ce	16	106-8397	1	Battery-12 Volt
6	110-9158	1	Shield-Muffler	17	110-7059	1	Decal-Fuse
7	32144-1	3	Screw-Taptite	18	108-0987	1	Foam-Battery
8	700918	1	Key	19	104-7953	1	Decal
9	108-9760	1	Mount-Switch	20	321-51	1	Screw-HH
10	46-5780	1	Starter Switch ASM	21	3296-73	1	Nut-Lock, NI
10:1	3254-5	1	Washer-Tooth, Internal	22	92-8632	1	Washer
10:2	218-461	1	Nut-HH	23	107-3749	1	Adapter-Charger
11	98-2391	1	Charger-European, 12V Dc	24	614249	1	Tie-Cable



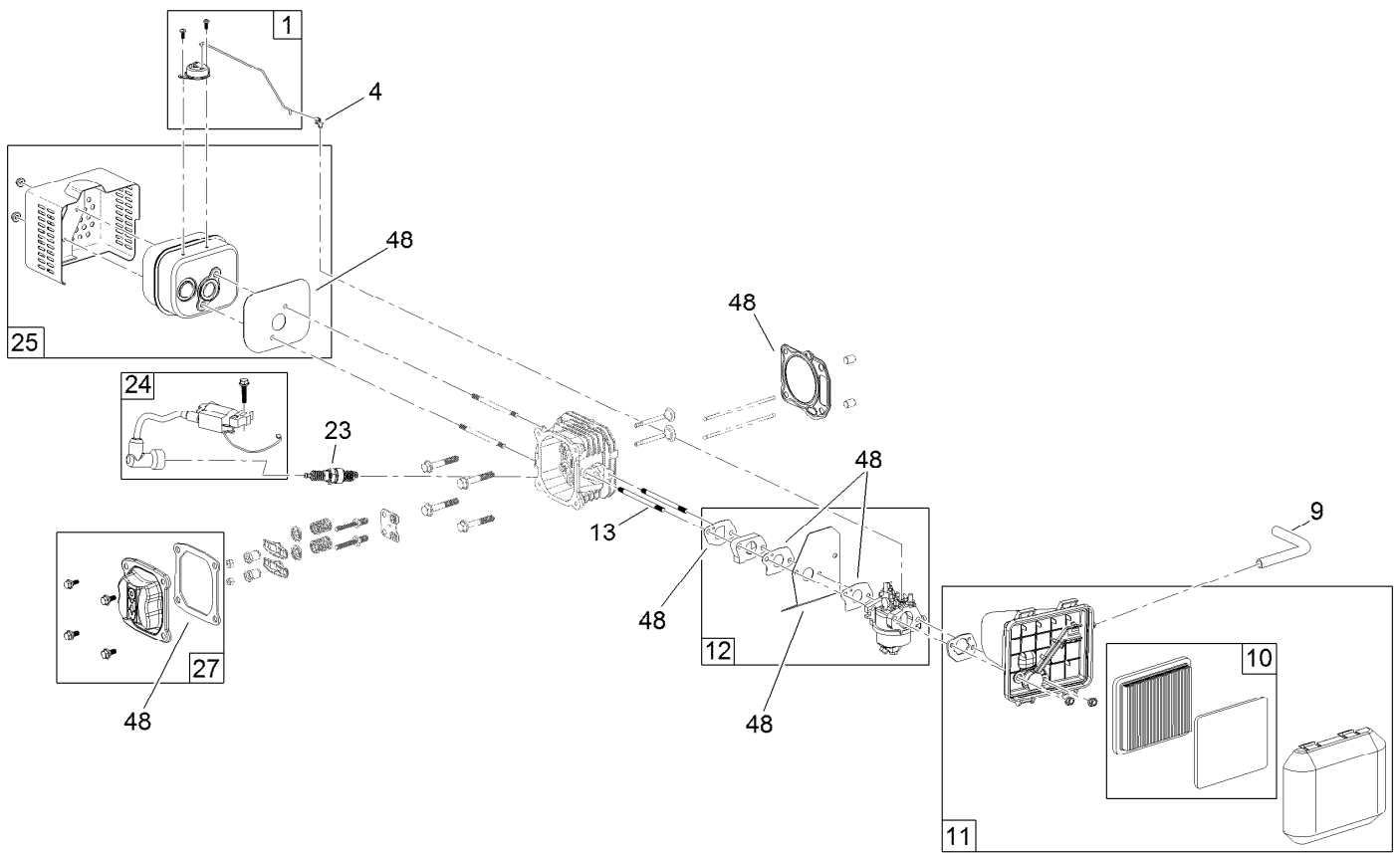
## Shroud, Flywheel and Fuel Tank Assembly

Ref.	Part Number	Qty.	Description
1	119-1990	1	Shroud ASM
2	121-4213	1	Recoil And Blower Shroud Kit
3	121-0391	1	Flywheel And Fan Kit
4	119-1915	1	Fuel Tank Kit (Cap And Hardware)
4:1	119-1914	1	Cap-Fuel
5	121-4167	1	Fuel Line Kit
6	119-1966	1	Air Vane Choke Kit
7	121-0393	1	Starter Kit
8	121-0392	1	Alternator Kit
9	121-0395	1	Wire Harness Kit



## Dipstick, Brake and Governor Arm Assembly

<i>Ref.</i>	<i>Part Number</i>	<i>Qty.</i>	<i>Description</i>
1	119-1903	1	Dipstick And Fill Tube Kit
11	121-4205	1	Brake Kit
47	119-1968	1	Governor Arm Kit
48	121-4215	1	Seal And Gasket Kit



## Carburetor, Muffler, Air Cleaner and Valve Cover Assembly

Ref.	Part Number	Qty.	Description
1	119-1999	1	Thermal Choke Control Kit
4	120-4451	1	Lock-Throttle
9	119-1902	1	Tube-Breather
10	119-1909	1	Air Filter And Prefilter Kit
11	121-0374	1	Air Cleaner ASM
12	120-4405	1	Carburetor Repair Kit
12	121-4216	1	Carburetor Complete Kit
13	121-0367	2	Stud-Intake
23	121-4199	1	Spark Plug
24	119-1908	1	Ignition And Hardware Kit
25	119-1969	1	Muffler And Shield Kit
27	121-0492	1	Valve Cover Kit
48	121-4215	1	Seal And Gasket Kit

# Attachments and Accessories

## For 20952 48cm Recycler Lawn Mower

**Product Name**

**Model/Part**

Lawnmower Cover..... 490-7462

**Notes:**



**Count on it.**