



**Count on it.**

**Parts Catalog**

**20in Turf Seeder**

Model No. 23510—Serial No. 312000001 and Up

Model No. 33510—Serial No. 312000001 and Up



# Ordering Replacement Parts

To order replacement parts, please supply the part number, the quantity, and the description of each part desired.

## Understanding Reference Numbers

Each identified part in an illustration has a reference number. The reference number for a part also appears in the parts list, along with other information about the part.

This catalog uses two special reference number formats, one to indicate parts in a service assembly and another to indicate the quantity of a given part in an illustration.

## Service Assembly Reference Numbers

Parts in service assemblies have reference numbers in the form a:b. The a represents the reference number of the entire service assembly and the b represents a sequential number unique to each part within the service assembly.

For example, a wheel assembly might be identified by reference number 6, the tire by 6:1, the valve by 6:2, and the wheel by 6:3. When you order the assembly identified by reference number 6, you receive all parts identified by reference numbers 6:1, 6:2, and 6:3. However, you may also order any part individually. Reference numbers of this type appear in illustration and in parts lists.

## Reference Numbers Indicating Quantity

In an illustration, if a reference number indicates more than one part, the reference number has the form nX y. The n represents the quantity of the part, the X is the multiplication symbol, and the y represents the reference number.

For example, in an illustration, the reference number 2X 37 means that two of the parts identified by reference number 37 are indicated.

# List of Abbreviations

**AR:** as required

**ASM:** assembly

**BBC:** blade brake control

**BHTF:** button head thread forming

**CARR:** carriage

**CCW:** counter clockwise

**CW:** clockwise

**DEG:** degrees

**DPA:** Dual Point Adjustment

**ECM:** electronic control module

**EXT:** external

**FH:** flat head

**GA:** gauge

**HD:** heavy-duty

**HF:** hex flange

**HH:** hex head

**HHF:** hex head flange

**HHFTF:** hex head flange thread forming

**HJ:** hex jam

**HLH:** hex lag head

**HOC:** height-of-cut

**HSBH:** hex socket button head

**HSFH:** hex socket flat head

**HSH:** hex socket head

**HWH:** hex washer head

**HWHTF:** hex washer head thread forming

**HYD:** hydraulic

**LH:** left hand

**LP:** Liquefied Petroleum Gas

**LPG:** Liquefied Petroleum Gas

**NI:** nylon insert

**NPTF:** national pipe thread fine

**PFH:** phillips flat head

**PPH:** phillips pan head

**PPHTF:** phillips pan head thread forming

**PRH:** phillips round head

**PTH:** phillips truss head

**PTO:** power-take-off

**RH:** right hand

**ROPS:** roll-over protection system

**RRB:** rear roller brush

**SFH:** slotted fillister head

**SHH:** slotted hex head

**SHWH:** slotted hex washer head

**SPH:** slotted pan head

**SQH:** square head

**SRH:** slotted round head

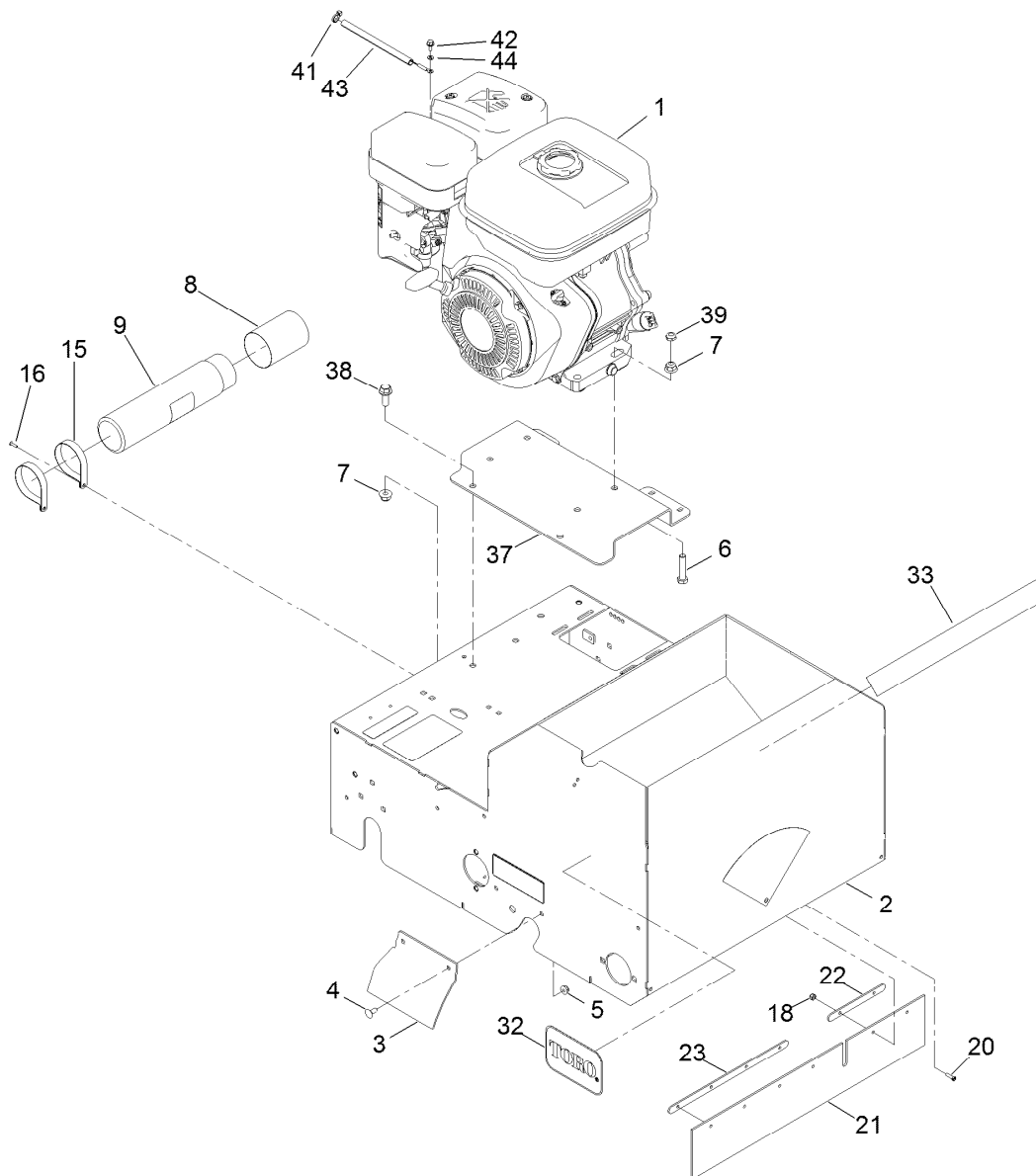
**STD:** standard

**TAP:** self tapping

**TTH:** torx truss head

# Contents

Engine and Frame Assembly .....	4
Main Frame Assembly No. 121-6196 .....	5
Handle Assembly .....	6
Cutting Wheel Assembly .....	8
Shaft Assembly No. 126-0034 .....	9
Seed Gate Assembly .....	10
Belt Drive Assembly .....	12
Transmission Assembly .....	14

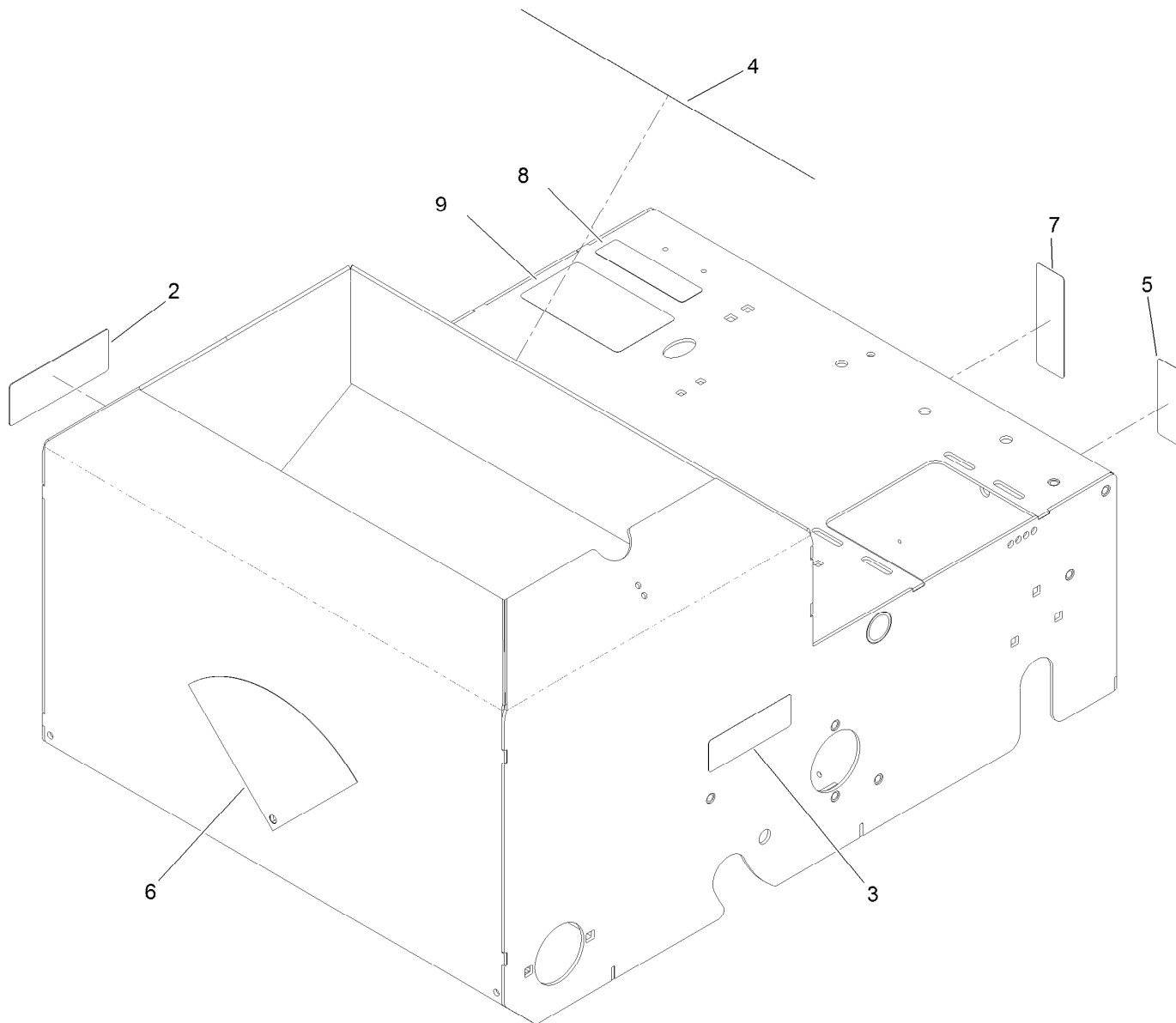


## Engine and Frame Assembly

Ref.	Part Number	Qty.	Description	Ref.	Part Number	Qty.	Description
1		1	Engine-Subaru, Ex27 ■●	21	121-1990	1	Guard-Dust
2	121-6196	1	Frame ASM	22	121-1991	1	Plate-Retainer
3	121-1896-01	1	Guard-RH	23	121-1992	1	Plate-Retainer
4	3229-11	2	Screw-CARR	32	67-1300	2	Decal
5	104-7201	2	Nut-HF	33	121-6177	1	Decal
6	323-9	4	Screw-HH	37	116-9524-01	1	Plate-Engine
7	104-8301	7	Nut-Flange, NI	38	3234-42	3	Screw-HHF
8	104-7048	1	Cap-Housing	39	3296-59	1	Nut-Lock, NI
9	104-7050	1	Tube-Manual	41	1-303287	1	Tie-Cable
15	2412-120	2	Clamp-R	42	120-4579	1	Screw-Hfh
16	3269-17	2	Rivet-Pop	43	126-1000	1	Rfi-Sheathing
18	3296-1	6	Nut-Lock	44	43-5920	1	Washer-Lock, Spring
20	3290-392	6	Screw-SHH				

● Not serviced separately

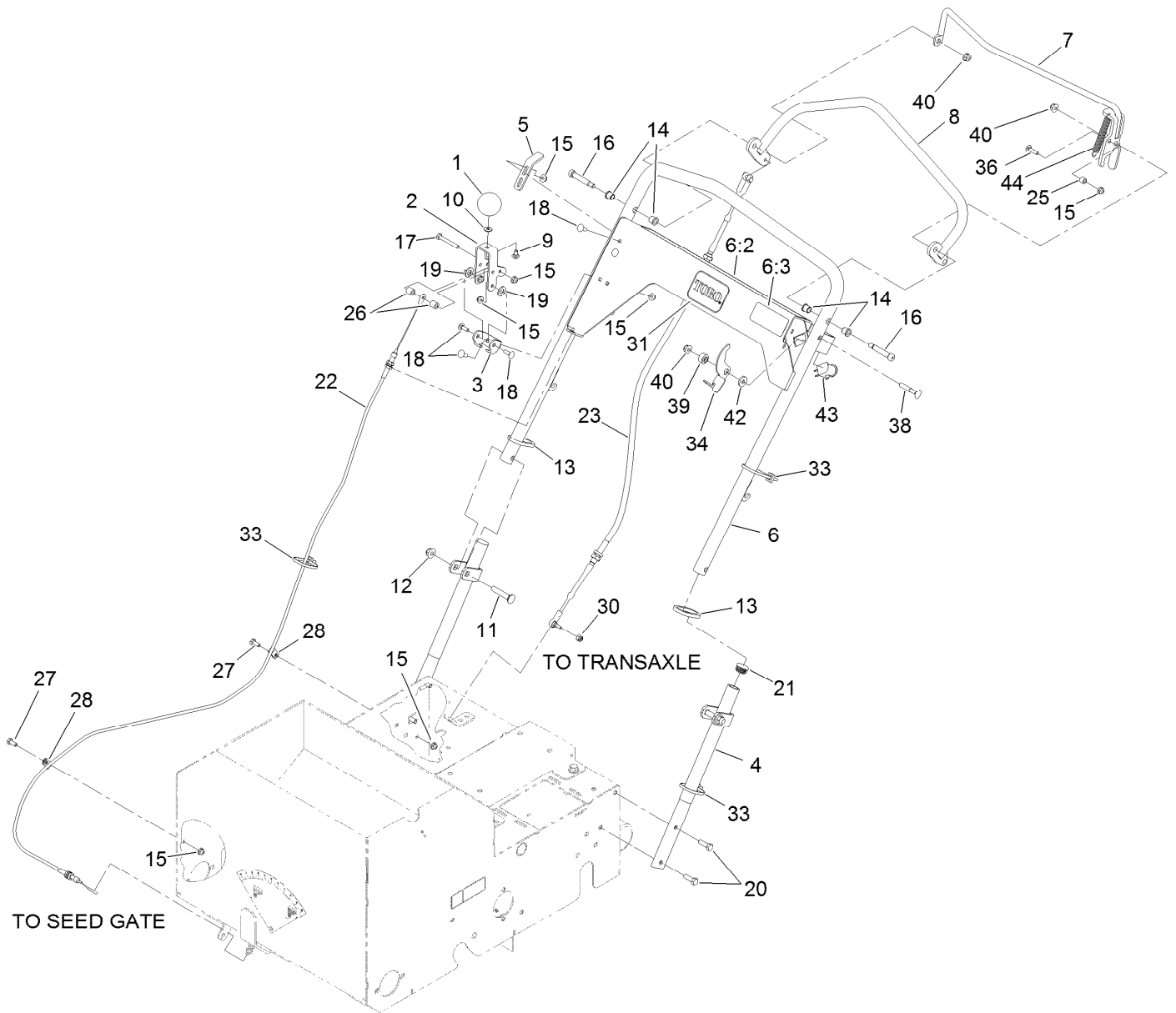
■ Obtain parts from [www.subarupower.com](http://www.subarupower.com)



## Main Frame Assembly No. 121-6196

<i>Ref.</i>	<i>Part Number</i>	<i>Qty.</i>	<i>Description</i>
2	93-7321	1	Decal-Danger
3	117-4979	1	Decal-Warning, Shields
4	121-2011	1	Decal-Warning
5	115-9625	1	Decal
6	116-8535	1	Decal-Flow, Seed
7	121-6203	1	Decal-Bypass
8	117-2718	1	Decal-Arrester, Spark
9	126-0296	1	Decal-Service Aid Seeder

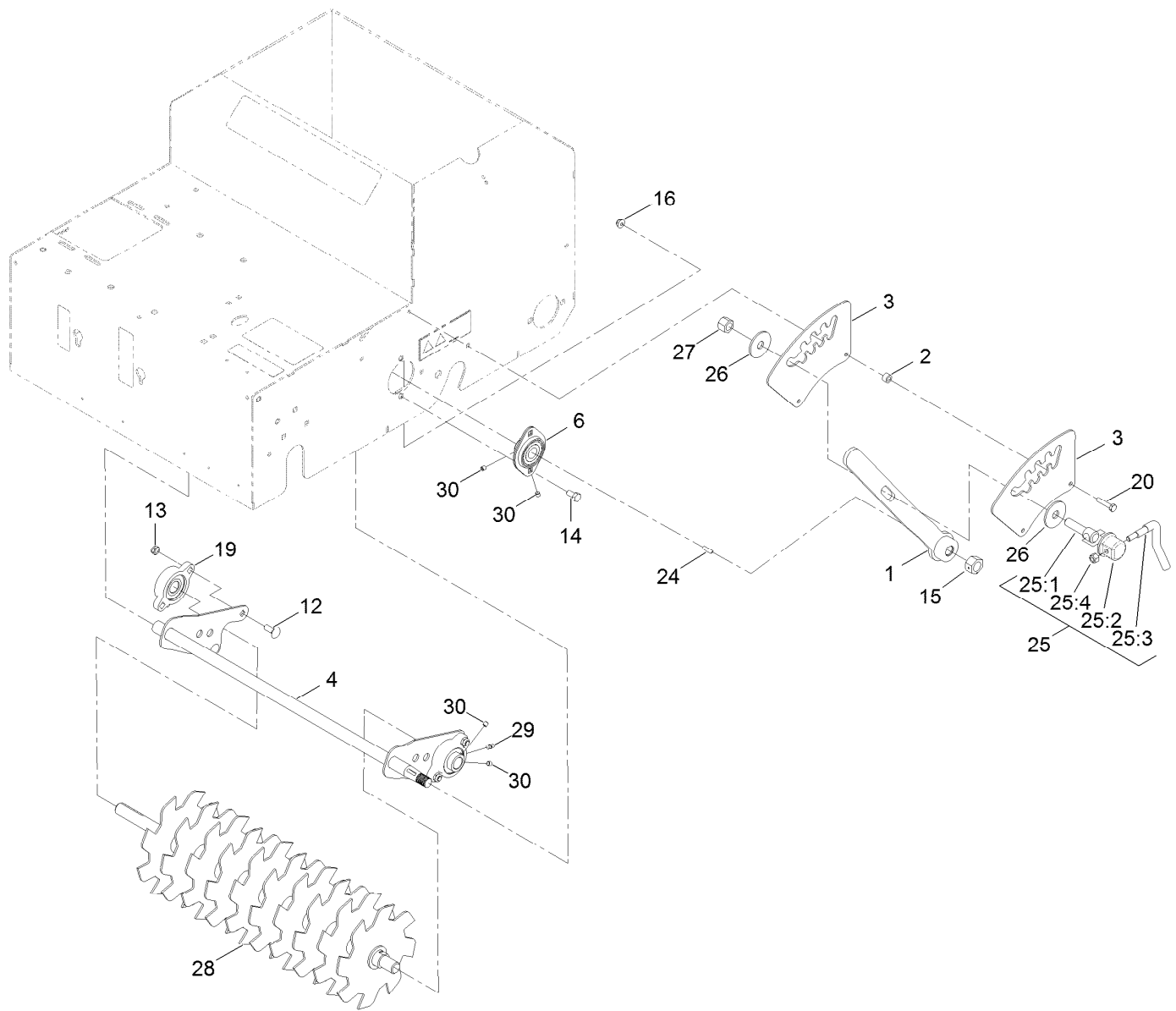
# Handle Assembly



## Handle Assembly (continued)

<i>Ref.</i>	<i>Part Number</i>	<i>Qty.</i>	<i>Description</i>	<i>Ref.</i>	<i>Part Number</i>	<i>Qty.</i>	<i>Description</i>
1	121-1877	1	Knob-Rate, Flow	19	48-9220	2	Washer
2	121-1878	1	Lever-Adjust, Flow	20	322-5	4	Screw-HH
3	121-1879	1	Bracket-Adjust, Flow	21	121-4870	2	Plug
4	121-1893-03	2	Handle-Lower	22	126-0042	1	Cable-Flow, Seed
5	121-1928	1	Bracket-Adjust, Drive	23	116-8252	1	Cable-Push Pull
6	116-9735	1	Handle	25	66-8010	1	Spacer-Hub, Impeller
6:2	116-8648	1	Decal-Control Panel, Seeder	26	22-7810	2	Spacer
6:3	116-8536	1	Decal-Safety Latch	27	321-3	2	Screw-HH
7	116-9738-03	1	Bail	28	2412-149	2	Clamp-Hose
8	121-1948-03	1	Handle-Drive	30	3296-3	1	Nut-Lock
9	3229-10	1	Screw-CARR ●	31	70-2200	1	Decal
10	3256-22	1	Washer-Flat	33	3290-378	3	Tie-Cable
11	3231-6	2	Screw-CARR	34	126-0205	1	Latch-Bail
12	104-8301	2	Nut-Flange, NI	36	3229-2	1	Screw-CARR
13	121-6202	2	Ring-Handle Lock	38	112-8876	1	Screw-Handle
14	103-9928	4	Bearing	39	116-2690	1	Bushing-Stepped
15	104-7201	10	Nut-HF	40	104-8300	3	Nut-Flange, NI
16	126-0277	2	Screw-Shoulder	42	88-7200	1	Washer-Flat
17	321-11	1	Screw-HH	43	82-2190	1	Switch-Bail
18	3229-1	6	Bolt-CARR	44	95-3805	1	Spring

● Use Pro-Lock, Nut Type (P/N 1-840022, .5ml tube) on threads.

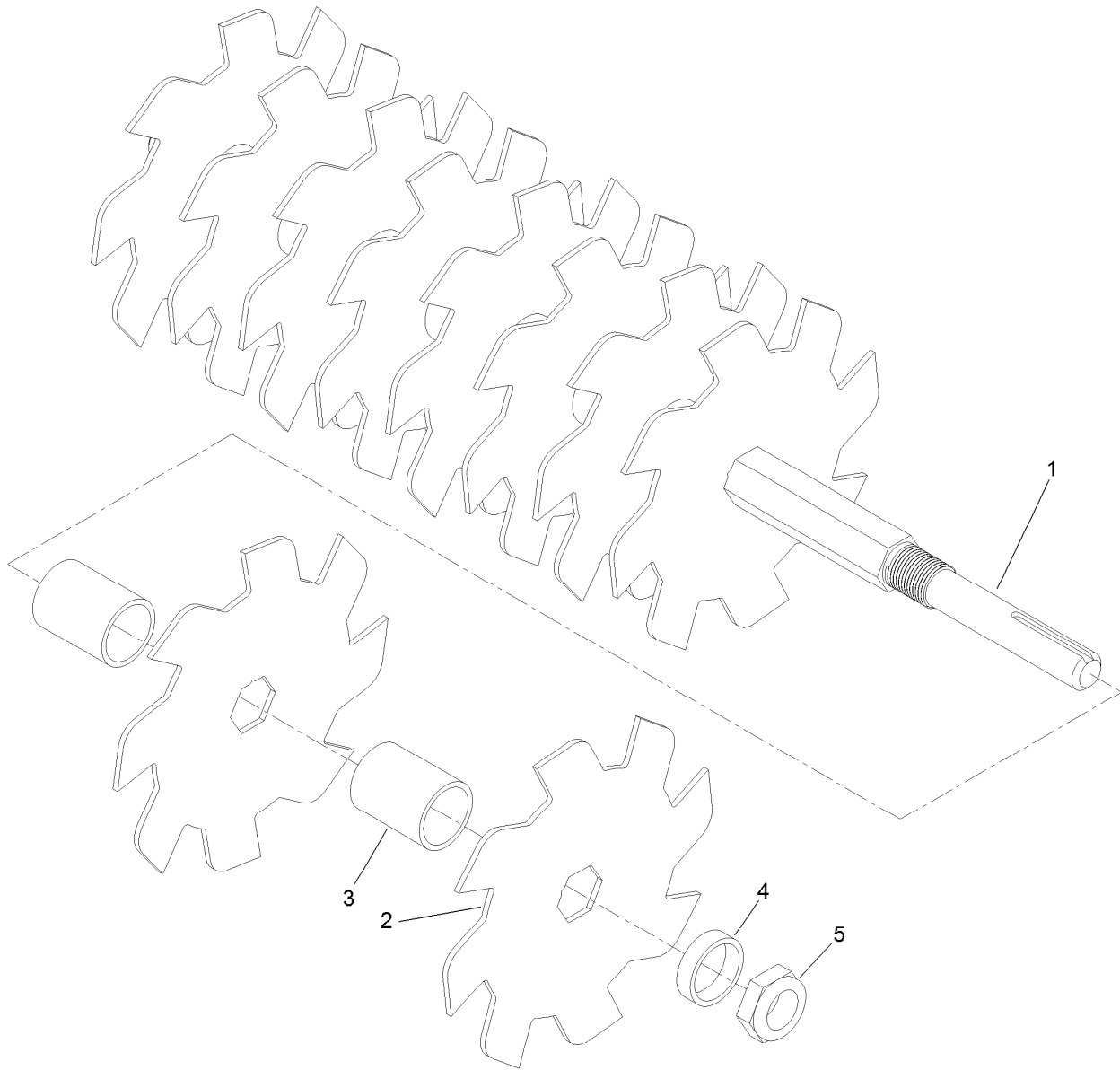


## Cutting Wheel Assembly

Ref.	Part Number	Qty.	Description	Ref.	Part Number	Qty.	Description
1	116-9932-03	1	Handle-Height	24	3257-5	1	Key-Woodruff
2	98-4799	2	Spacer	25	107-1664	1	Lever ASM
3	116-9928	2	Plate-Height	25:1	106-3239	1	Screw-Lock
4	126-0010-03	1	Pivot-Height	25:2	107-1644	1	Cap-Lock
6	121-1961	2	Bearing	25:3	106-3241	1	Lever-Lock
12	3230-16	4	Screw-CARR	25:4	3296-29	1	Nut-Lock, NI
13	3296-47	4	Nut-Lock, NI	26	86-1990	2	Washer
14	322-2	4	Screw-HH	27	3296-23	1	Nut-Lock, NI
15	603164	1	Nut-Blade	28	126-0034	1	Slicer Shaft ASM
16	104-7201	2	Nut-HF	29	302-19	2	Fitting-Grease ●
19	116-9992	2	Bearing-Flange	30	3245-35	8	Screw-Set, HSH ●
20	321-8	2	Screw-HH				

● Use Pro-Lock, Nut Type (P/N 1-840022, .5ml tube) on threads.

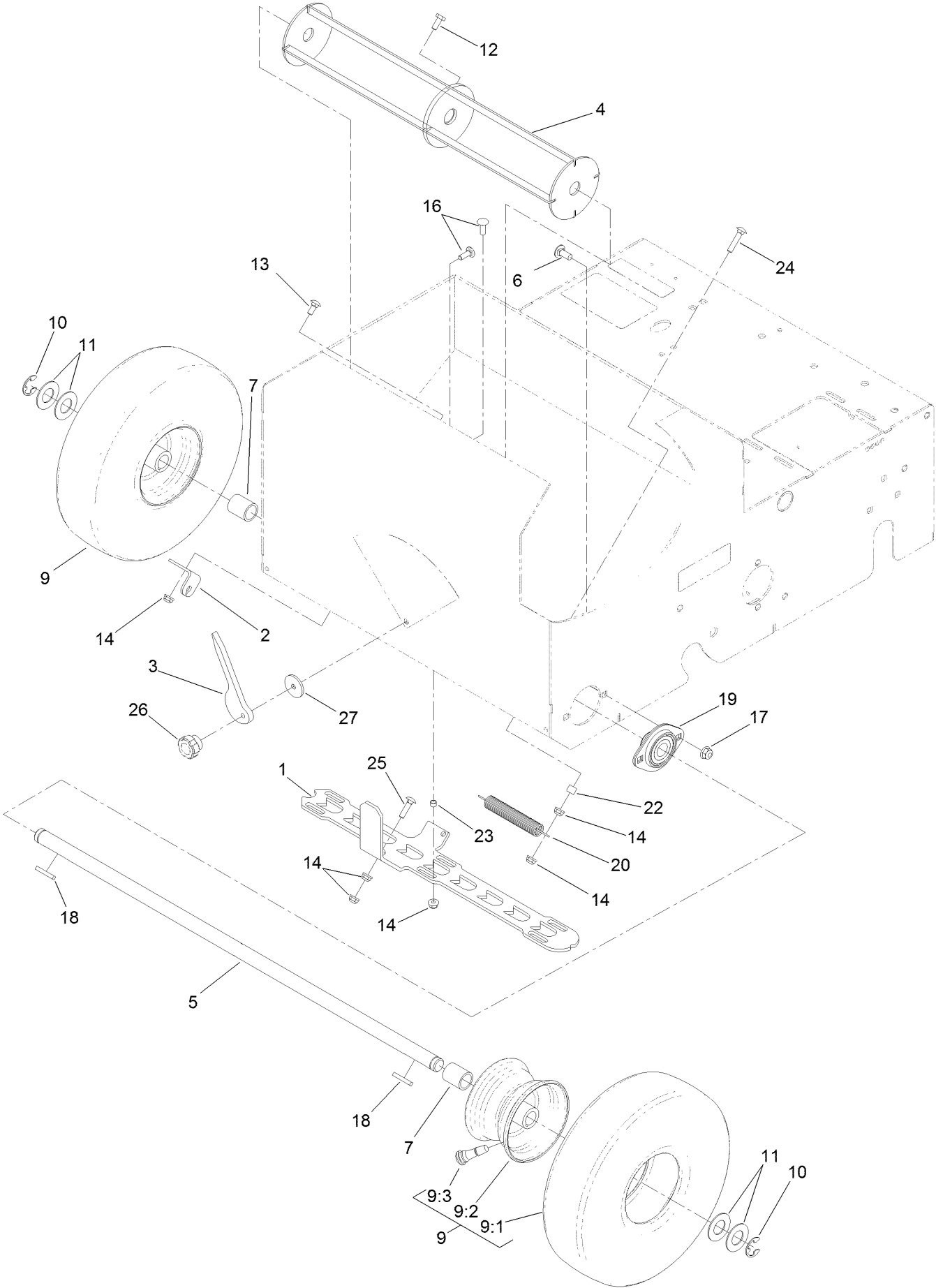




## Shaft Assembly No. 126-0034

<i>Ref.</i>	<i>Part Number</i>	<i>Qty.</i>	<i>Description</i>
1	126-0009	1	Shaft-Slicer
2	121-1931	10	Blade-Cutting, Seeder
3	126-0041	9	Spacer-Blade
4	126-0033	1	Spacer
5	3296-60	1	Nut-Lock, NI

# Seed Gate Assembly

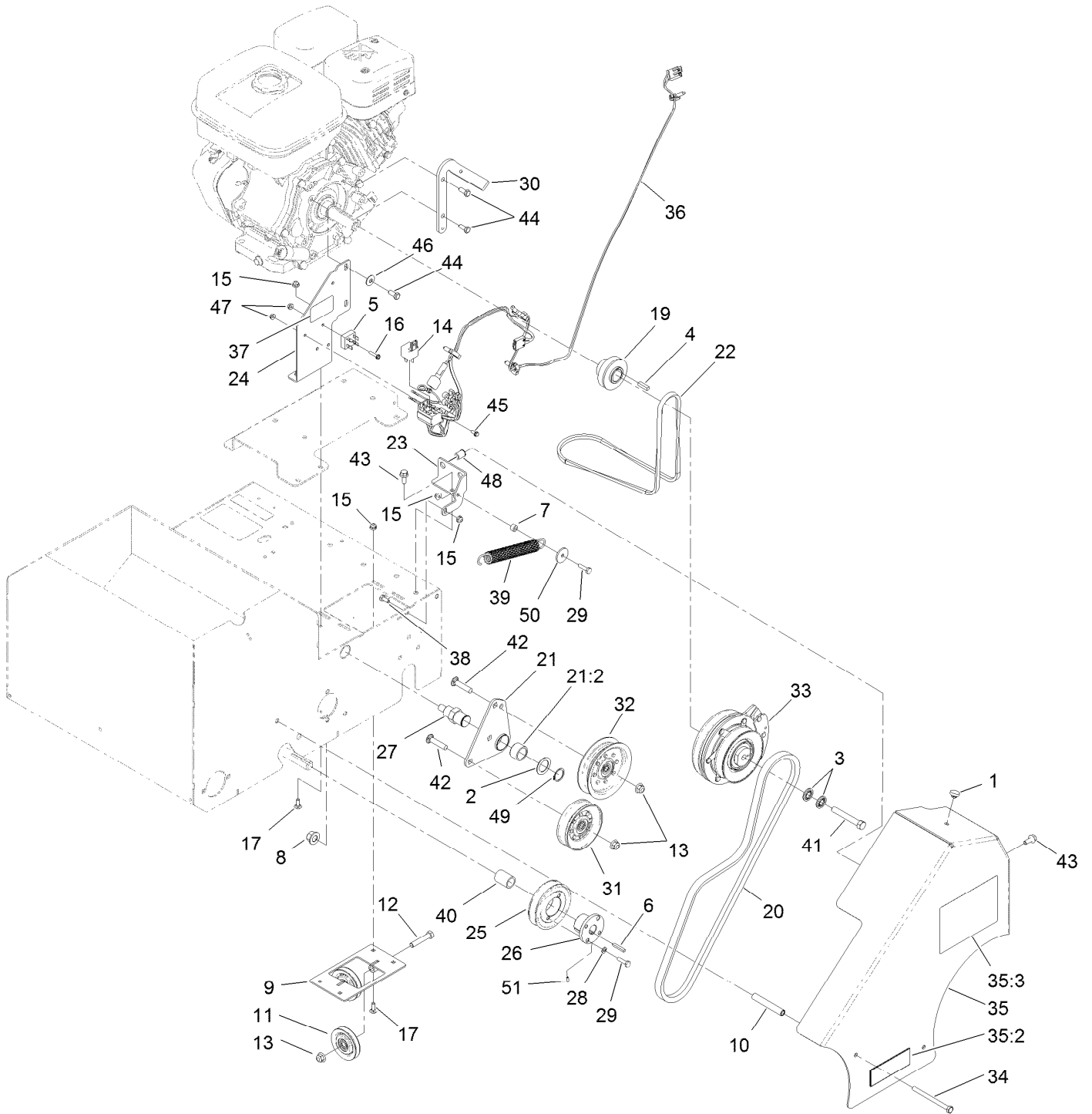


## Seed Gate Assembly (continued)

<i>Ref.</i>	<i>Part Number</i>	<i>Qty.</i>	<i>Description</i>	<i>Ref.</i>	<i>Part Number</i>	<i>Qty.</i>	<i>Description</i>
1	121-1905-03	1	Gate-Seed	13	3229-11	2	Screw-CARR
2	121-1907	1	Bracket-Seed Flow	14	104-7201	18	Nut-HF
3	121-1912	1	Gauge-Seed Flow	16	1-807512	7	Bolt-CARR
4	125-3782-03	1	Mixer	17	104-8300	4	Nut-Flange, NI
5	121-1929	1	Axle-Front ■	18	92-0049	2	Key-Square
6	3230-23	4	Screw-CARR	19	121-1961	2	Bearing
7	105-3838	2	Spacer	20	121-2016	2	Spring-Extension
9	120-3550	2	Wheel ASM	22	66-8010	2	Spacer-Hub, Impeller
9:1	121-6081	1	Tire	23	121-2015	6	Spacer
9:2	121-6082	1	Wheel-Rim	24	3229-3	2	Screw-CARR
9:3	5108	1	Valve	25	32105-31	3	Screw, Truss HD 1/4-20 X 1
10	32151-48	2	E-Ring	26	233-67	1	Knob-Chute
11	3256-39	4	Washer-Flat	27	103995	1	Washer
12	321-3	1	Screw-HH ●				

- Use Pro-Lock, Nut Type (P/N 1-840022, .5ml tube) on threads.
- Apply anti-seize compound to axle ends before installing tires.

# Belt Drive Assembly

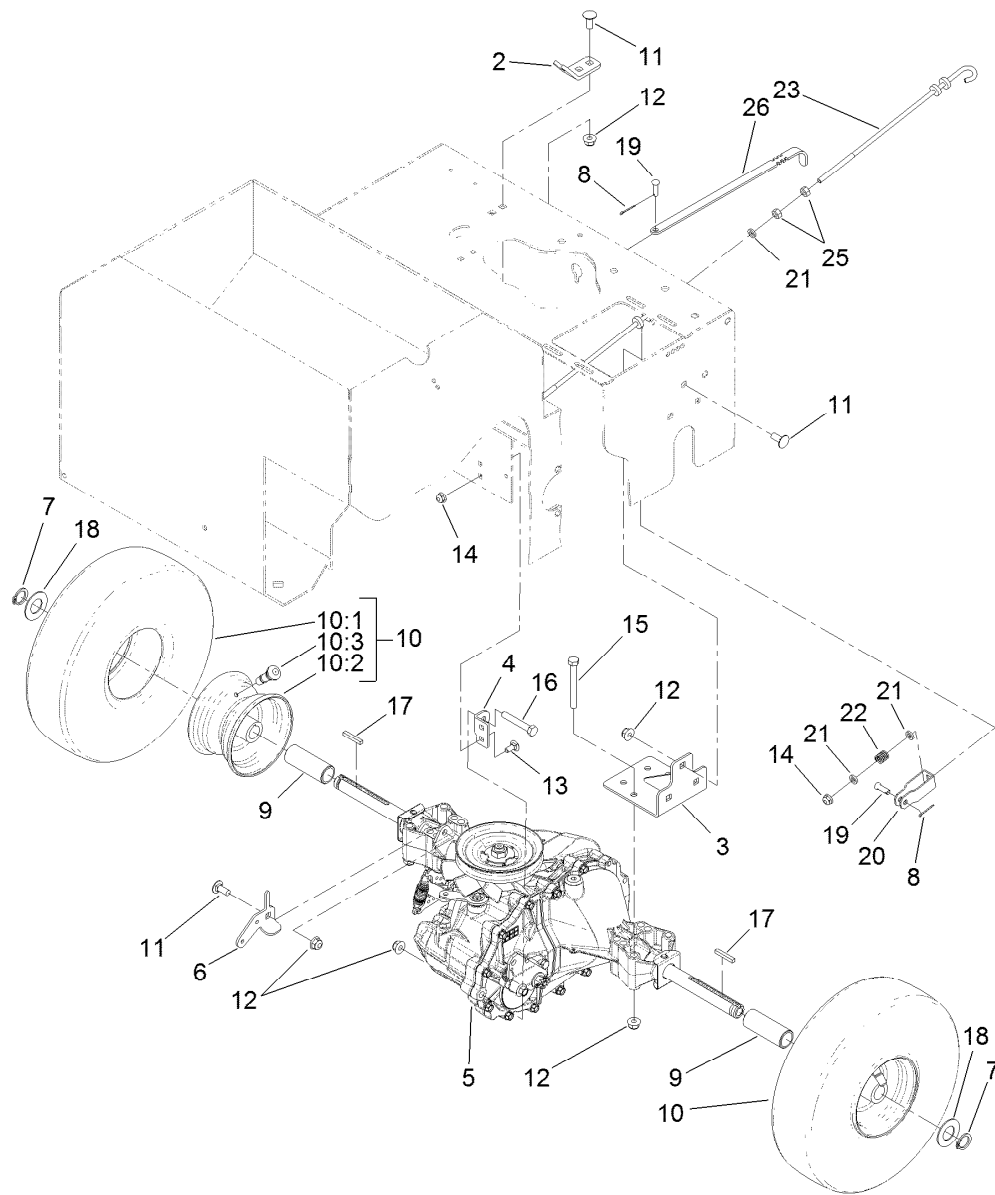


## Belt Drive Assembly (continued)

<i>Ref.</i>	<i>Part Number</i>	<i>Qty.</i>	<i>Description</i>	<i>Ref.</i>	<i>Part Number</i>	<i>Qty.</i>	<i>Description</i>
1	1-513658	1	Bumper	28	3253-3	2	Washer-Lock
2	1-543436	1	Washer-Spacer	29	321-6	3	Screw-HH
3	1-603610	2	Washer-Spring	30	116-9551	1	Stop-Clutch
4	1-807259	1	Key	31	116-9623	1	Pulley-Idler V
5	37-7600	1	Rectifier-Bridge	32	116-9728	1	Pulley-Idler Flat (4.06-Inch)
6	92-0049	1	Key-Square	33	116-9852	1	Clutch-Electric
7	98-4799	1	Spacer	34	322-19	2	Screw-HH
8	99-5107	1	Nut-Lock	35	116-9925	1	Belt Guard ASM
9	121-1967-03	1	Pulley-Tension	35:2	93-7321	1	Decal-Danger
10	104-0502	2	Spacer-Kickstand, Long	35:3	116-8537	1	Decal-Seed Graph
11	121-1965	2	Pulley-Idler	36	116-9926	1	Harness-Slicer/Seeder ■
12	323-10	2	Screw-HH	37	116-9985	1	Decal-Bridge Rectifier
13	104-8301	4	Nut-Flange, NI	38	321-3	1	Screw-HH
14	105-4145	1	Relay	39	126-0091	1	Spring-Extension
15	104-7201	8	Nut-HF	40	126-0108	1	Spacer
16	106-9169	1	Screw-HWH	41	3212-12	1	Screw-HH ●
17	3229-1	6	Bolt-CARR	42	3231-29	2	Screw-CARR
19	116-9471	1	Pulley-Mule Drive	43	3234-47	3	Screw-HHF
20	116-9518	1	Belt-Seeder, Clutch	44	3235-6	4	Screw-HH
21	116-9519	1	Idler Arm ASM	45	3290-321	1	Screw-HWH
21:2	116-9538	1	Bushing	46	3290-456	2	Washer-Belleville
22	116-9532	1	Belt-Mule Drive	47	32128-17	2	Nut-Lock, Flange
23	116-9533-01	1	Bracket-Spring	48	32148-7	2	Nut-Insert
24	116-9534-01	1	Support-Engine	49	32151-29	1	Ring-Retaining
25	121-2019	1	Sheave-Taper Lock	50	103995	1	Washer
26	121-2022	1	Bushing-Taper Lock	51	126-0284	1	Screw-Set, Hs
27	116-9539	1	Pivot-Idler				

● Use Pro-Lock, Nut Type (P/N 1-840022, .5ml tube) on threads.

■ Use dielectric grease on all unsealed connectors and terminals only. Do not apply in sealed connectors.



## Transmission Assembly

Ref.	Part Number	Qty.	Description	Ref.	Part Number	Qty.	Description
2	121-1897	1	Bracket-Cable	13	3229-11	2	Screw-CARR
3	121-1901-03	2	Bracket-Axle	14	104-7201	3	Nut-HF
4	121-1904	1	Bracket-Transaxle, Torque	15	322-13	8	Screw-HH
5	121-1908	1	Transaxle ASM ●	16	322-10	1	Screw-HH
6	121-1909	1	Bracket-Transaxle	17	92-0049	2	Key-Square
7	32120-93	2	Ring-Retaining	18	3256-39	2	Washer-Flat
8	3272-4	2	Pin-Cotter	19	1-808265	2	Pin-Clevis
9	121-1988	2	Spacer	20	39-3080	1	Clevis
10	120-3550	2	Wheel ASM	21	55-9620	3	Spacer-Plate, Pivot
10:1	121-6081	1	Tire	22	63-4220	1	Spring-Compression
10:2	121-6082	1	Wheel-Rim	23	121-2018	1	Rod-Brake
10:3	5108	1	Valve	25	3217-5	2	Nut-Hex
11	3230-23	9	Screw-CARR	26	121-2039	1	Lever-Bypass
12	104-8300	18	Nut-Flange, NI				

● Apply anti-seize compound to axle ends before installing tires.

**Notes:**



**Count on it.**