



Count on it.

Form No. 3376-832 Rev A

Parts Catalog

Powervac Gas-Powered Blower

Model No. 51987—Serial No. 313000001 and Up



Ordering Replacement Parts

To order replacement parts, please supply the part number, the quantity, and the description of each part desired.

Understanding Reference Numbers

Each identified part in an illustration has a reference number. The reference number for a part also appears in the parts list, along with other information about the part.

This catalog uses two special reference number formats, one to indicate parts in a service assembly and another to indicate the quantity of a given part in an illustration.

Service Assembly Reference Numbers

Parts in service assemblies have reference numbers in the form a:b. The a represents the reference number of the entire service assembly and the b represents a sequential number unique to each part within the service assembly.

For example, a wheel assembly might be identified by reference number 6, the tire by 6:1, the valve by 6:2, and the wheel by 6:3. When you order the assembly identified by reference number 6, you receive all parts identified by reference numbers 6:1, 6:2, and 6:3. However, you may also order any part individually. Reference numbers of this type appear in illustration and in parts lists.

Reference Numbers Indicating Quantity

In an illustration, if a reference number indicates more than one part, the reference number has the form nX y. The n represents the quantity of the part, the X is the multiplication symbol, and the y represents the reference number.

For example, in an illustration, the reference number 2X 37 means that two of the parts identified by reference number 37 are indicated.

List of Abbreviations

AR: as required

ASM: assembly

BBC: blade brake control

BHTF: button head thread forming

CARR: carriage

CCW: counter clockwise

CW: clockwise

DEG: degrees

DPA: Dual Point Adjustment

ECM: electronic control module

EXT: external

FH: flat head

GA: gauge

HD: heavy-duty

HF: hex flange

HH: hex head

HHF: hex head flange

HHFTF: hex head flange thread forming

HJ: hex jam

HLH: hex lag head

HOC: height-of-cut

HSBH: hex socket button head

HSFH: hex socket flat head

HSH: hex socket head

HWH: hex washer head

HWHTF: hex washer head thread forming

HYD: hydraulic

LH: left hand

LP: Liquefied Petroleum Gas

LPG: Liquefied Petroleum Gas

NI: nylon insert

NPTF: national pipe thread fine

PFH: phillips flat head

PPH: phillips pan head

PPHTF: phillips pan head thread forming

PRH: phillips round head

PTH: phillips truss head

PTO: power-take-off

RH: right hand

ROPS: roll-over protection system

RRB: rear roller brush

SFH: slotted fillister head

SHH: slotted hex head

SHWH: slotted hex washer head

SPH: slotted pan head

SQH: square head

SRH: slotted round head

STD: standard

TAP: self tapping

TTH: torx truss head

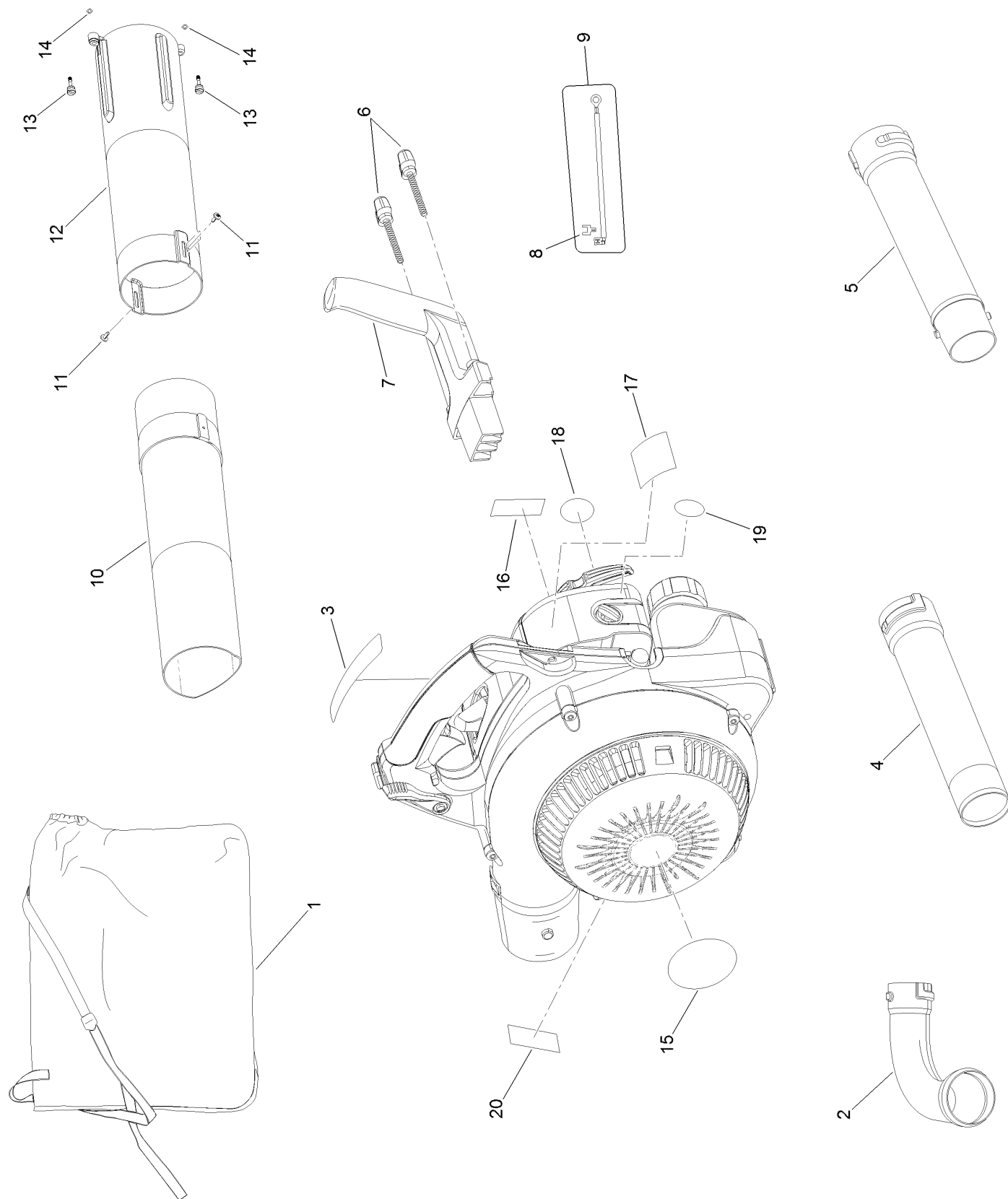
Contents

Main Blower Assembly 4

Engine and Housing Assembly 6

Engine Component Assembly 8

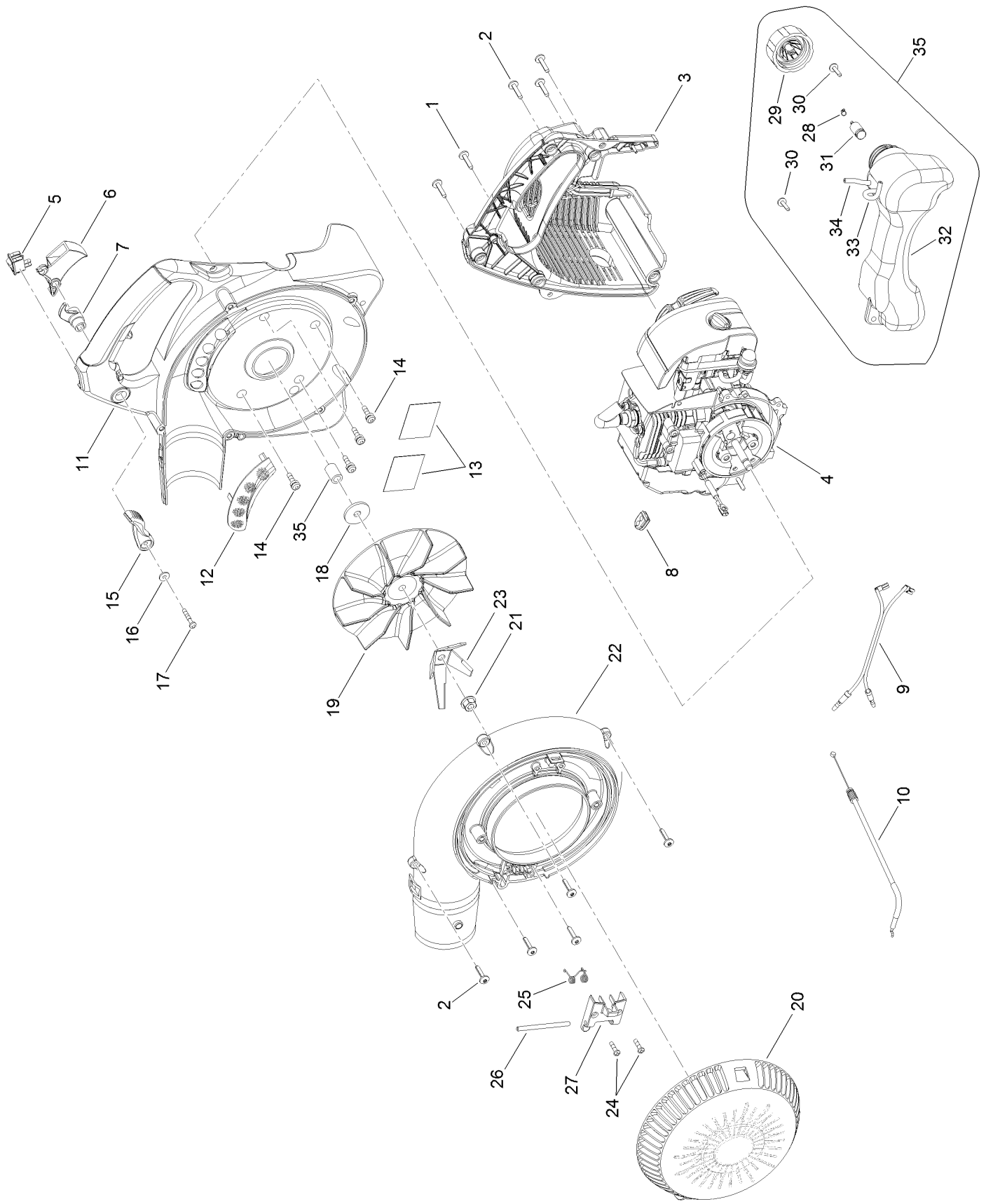
Main Blower Assembly



Main Blower Assembly (continued)

<i>Ref.</i>	<i>Part Number</i>	<i>Qty.</i>	<i>Description</i>	<i>Ref.</i>	<i>Part Number</i>	<i>Qty.</i>	<i>Description</i>
1	900960001	1	Bag-Vacuum	11	660621001	2	Screw-Tube, Vacuum
2	570563002	1	Adaptor-Bag, Vacuum	12	580892002	1	Tube-Vacuum, Upper
3	941727004	1	Strip-Icon	13	660880001	2	Screw
4	580537002	1	Nozzle-Sweeper	14	650027001	2	Ring-E
5	570543002	1	Tube-Blower, Upper	15	940906001	1	Label-Door, Vacuum
6	518273001	2	Knob-Handle, Vacuum	16	940835003	1	Label-Choke
7	518180003	1	Handle-Vacuum	17	940908001	1	Label-Instructions, Starting
8	638081001	1	Tab	18	940907001	1	Label-Cover, Starter
9	120900007	1	Ground Wire Kit	19	940927001	1	Label-T25
10	570562002	1	Tube-Vacuum, Lower	20	940654088	1	Label-Combustion

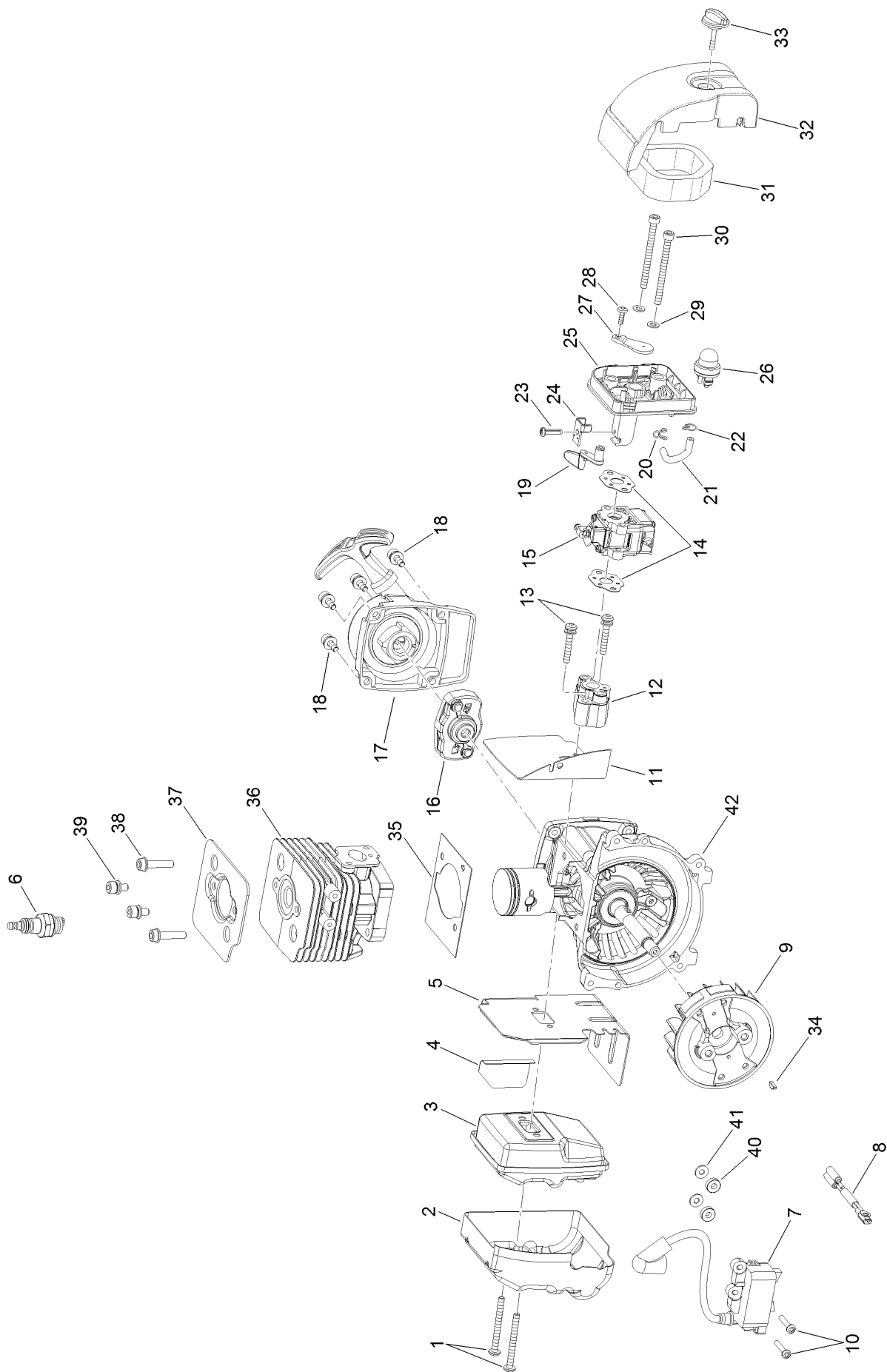
Engine and Housing Assembly



Engine and Housing Assembly (continued)

<i>Ref.</i>	<i>Part Number</i>	<i>Qty.</i>	<i>Description</i>	<i>Ref.</i>	<i>Part Number</i>	<i>Qty.</i>	<i>Description</i>
1	660674003	2	Screw	19	518265003	1	Fan
2	660674001	8	Screw	20	522811001	1	Door-Vacuum
3	518323022	1	Shroud-Engine	21	678128002	1	Nut-Lock
4	308107024	1	Engine	22	518266045	1	Housing-Outer
5	760363005	1	Switch-Engine	23	678114003	1	Blade-Mulcher
6	518255002	1	Trigger-Throttle	24	660665001	2	Screw
7	518150001	1	Lock-Throttle	25	678117001	1	Spring-Hinge
8	570624001	1	Grommet-Rubber	26	650026002	1	Pin
9	290986002	1	Harness-Wire	27	518632001	1	Hinge-Door, Vacuum
10	308209003	1	Cable-Throttle	28	690765001	1	Clamp-Spring, Filter
11	518140006	1	Housing-Inner	29	310816005	1	Cap-Fuel
12	638179001	1	Screen-Mesh	30	660674002	2	Screw
13	900955002	2	Tape-Shield, Heat	31	310976001	1	Filter-Fuel
14	660344005	4	Screw	32	310752013	1	Fuel Tank ASM
15	518160011	1	Lever-Control, Cruise	33	562967014	1	Tubing-Permeation, Low
16	678125001	1	Washer-Steel	34	570373012	1	Tube-Rubber
17	660666001	1	Screw	35	309042005	1	Fuel Tank And Cap ASM
18	678126005	1	Washer				

Engine Component Assembly



Engine Component Assembly (continued)

<i>Ref.</i>	<i>Part Number</i>	<i>Qty.</i>	<i>Description</i>
1	660347001	2	Screw-Pan HD
2	638027001	1	Shield-Heat
3	300748034	1	Muffler ASM
4	900955002	1	Tape-Shield, Heat
5	638183001	1	Gasket-Muffler
6	870174001	1	Sparkplug
7	290178008	1	Ignition Coil ASM
8	290702001	1	Ignition Lead ASM
9	640574002	1	Rotor
10	660349001	2	Screw-Pan HD
11	900711008	1	Gasket-Insulator
12	518329001	1	Insulator-Dam, Heat
13	660344003	2	Screw-Pan HD
14	900711003	2	Gasket-Carburetor
15	308480001	1	Carburetor ASM
16	308004001	1	Pulley ASM
17	308430001	1	Recoil Starter ASM
18	660351001	4	Screw-Pan HD
19	590458001	1	Lever-Choke
20	690700001	1	Clip-Hose
21	570373003	1	Hose

<i>Ref.</i>	<i>Part Number</i>	<i>Qty.</i>	<i>Description</i>
22	690699001	2	Clip-Hose
23	660734001	1	Screw
24	638133003	1	Clip-Retaining
25	518130001	1	Plate-Carburetor
26	300780002	1	Primer ASM
27	590946001	1	Plate-Choke
28	660345001	1	Screw-Pan HD
29	631049003	2	Washer
30	660346001	2	Screw-Pan HD
31	560873001	1	Element
32	518253001	1	Cover-Box, Air
33	590461001	1	Knob
34	690688001	1	Key-Woodruff
35	900709005	1	Gasket
36	640570023	1	Cylinder
37	630002021	1	Plate-Cylinder
38	660342001	2	Screw-Socket Head
39	660351002	1	Screw-Pan Head, Torx
40	590462001	2	Spacer
41	690969001	2	Washer
42	300749009	1	Crankcase ASM

Notes:

Notes:



Count on it.