



**Count on it.**

Form No. 380-0007 Rev B

# Parts Catalog

## V-1550 Series Sprinklers

Model No. V-1550 Series



# Ordering Replacement Parts

To order replacement parts, please supply the part number, the quantity, and the description of each part desired.

## Understanding Reference Numbers

Each identified part in an illustration has a reference number. The reference number for a part also appears in the parts list, along with other information about the part.

This catalog uses two special reference number formats, one to indicate parts in a service assembly and another to indicate the quantity of a given part in an illustration.

## Service Assembly Reference Numbers

Parts in service assemblies have reference numbers in the form a:b. The a represents the reference number of the entire service assembly and the b represents a sequential number unique to each part within the service assembly.

For example, a wheel assembly might be identified by reference number 6, the tire by 6:1, the valve by 6:2, and the wheel by 6:3. When you order the assembly identified by reference number 6, you receive all parts identified by reference numbers 6:1, 6:2, and 6:3. However, you may also order any part individually. Reference numbers of this type appear in illustration and in parts lists.

## Reference Numbers Indicating Quantity

In an illustration, if a reference number indicates more than one part, the reference number has the form nX y. The n represents the quantity of the part, the X is the multiplication symbol, and the y represents the reference number.

For example, in an illustration, the reference number 2X 37 means that two of the parts identified by reference number 37 are indicated.

# List of Abbreviations

**AR:** as required

**ASM:** assembly

**BBC:** blade brake control

**BHTF:** button head thread forming

**CARR:** carriage

**CCW:** counter clockwise

**CW:** clockwise

**DEG:** degrees

**DPA:** Dual Point Adjustment

**ECM:** electronic control module

**EXT:** external

**FH:** flat head

**GA:** gauge

**HD:** heavy-duty

**HF:** hex flange

**HH:** hex head

**HHF:** hex head flange

**HHFTF:** hex head flange thread forming

**HJ:** hex jam

**HLH:** hex lag head

**HOC:** height-of-cut

**HSBH:** hex socket button head

**HSFH:** hex socket flat head

**HSH:** hex socket head

**HWH:** hex washer head

**HWHTF:** hex washer head thread forming

**HYD:** hydraulic

**LH:** left hand

**LP:** Liquefied Petroleum Gas

**LPG:** Liquefied Petroleum Gas

**NI:** nylon insert

**NPTF:** national pipe thread fine

**PFH:** phillips flat head

**PPH:** phillips pan head

**PPHTF:** phillips pan head thread forming

**PRH:** phillips round head

**PTH:** phillips truss head

**PTO:** power-take-off

**RH:** right hand

**ROPS:** roll-over protection system

**RRB:** rear roller brush

**SFH:** slotted fillister head

**SHH:** slotted hex head

**SHWH:** slotted hex washer head

**SPH:** slotted pan head

**SQH:** square head

**SRH:** slotted round head

**STD:** standard

**TAP:** self tapping

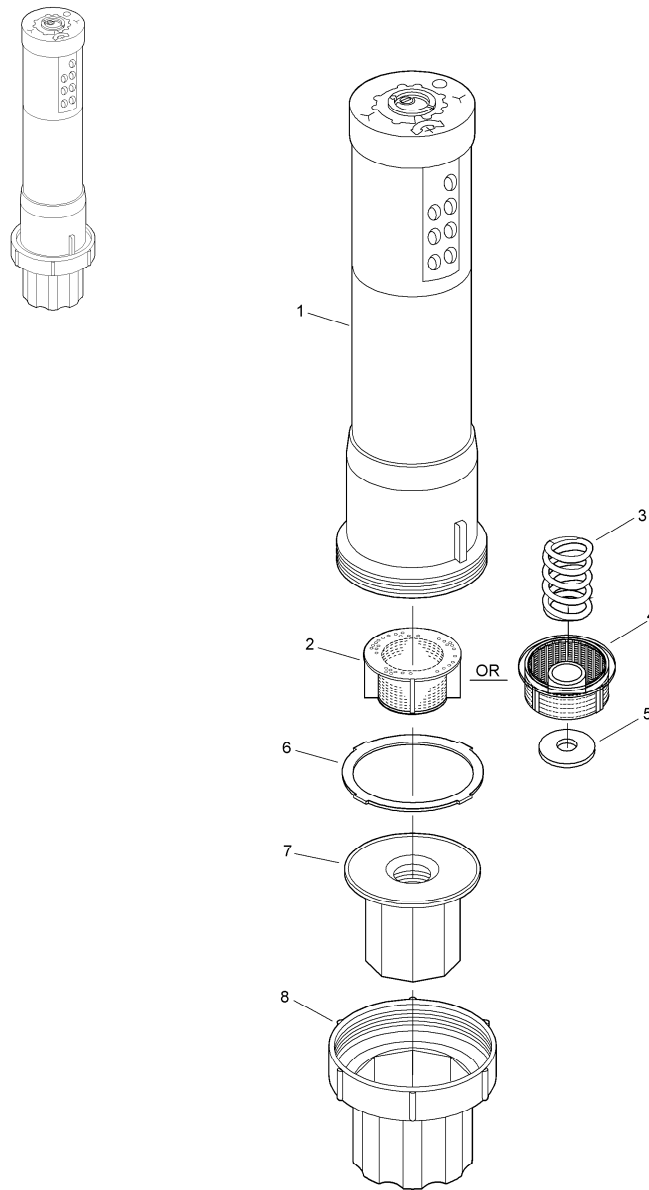
**TTH:** torx truss head

# Contents

V-1550-Shrub ..... 4

V-1550-4 components ..... 6

V-1550-12 ..... 8

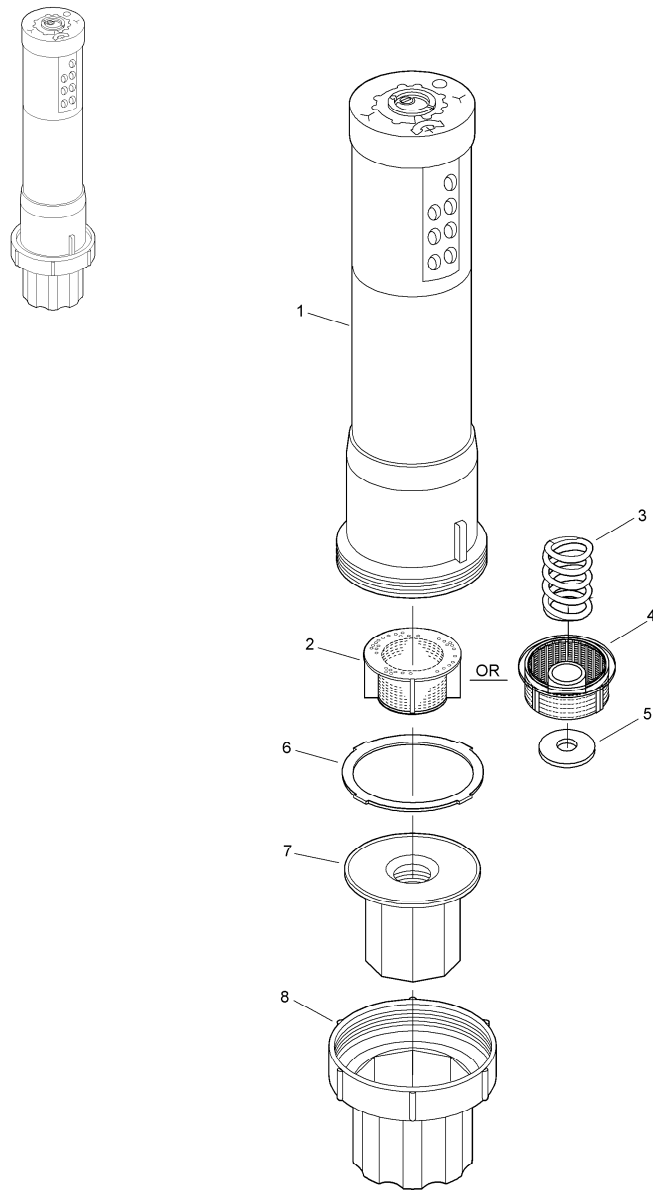


## V-1550-Shrub

Ref.	Part Number	Qty.	Description
1		1	Body Assembly ♦
2	89-5847	1	Screen
3	102-0581	1	Spring, Com ▲
4	102-0576	1	Screen, Com
5	89-7561	1	Seal, Check, Com
6	9-5211	1	Seal
7	89-6094	1	Threaded Insert, 3/4" & 1/2"
7	102-0577	1	Threaded Insert, 3/4"
8	89-8305	1	Base, Shrub
	89-7350		Adjustment Key ●■

● SERVICE ITEMS  
▲ No longer available

■ Not illustrated  
♦ Not serviced separately

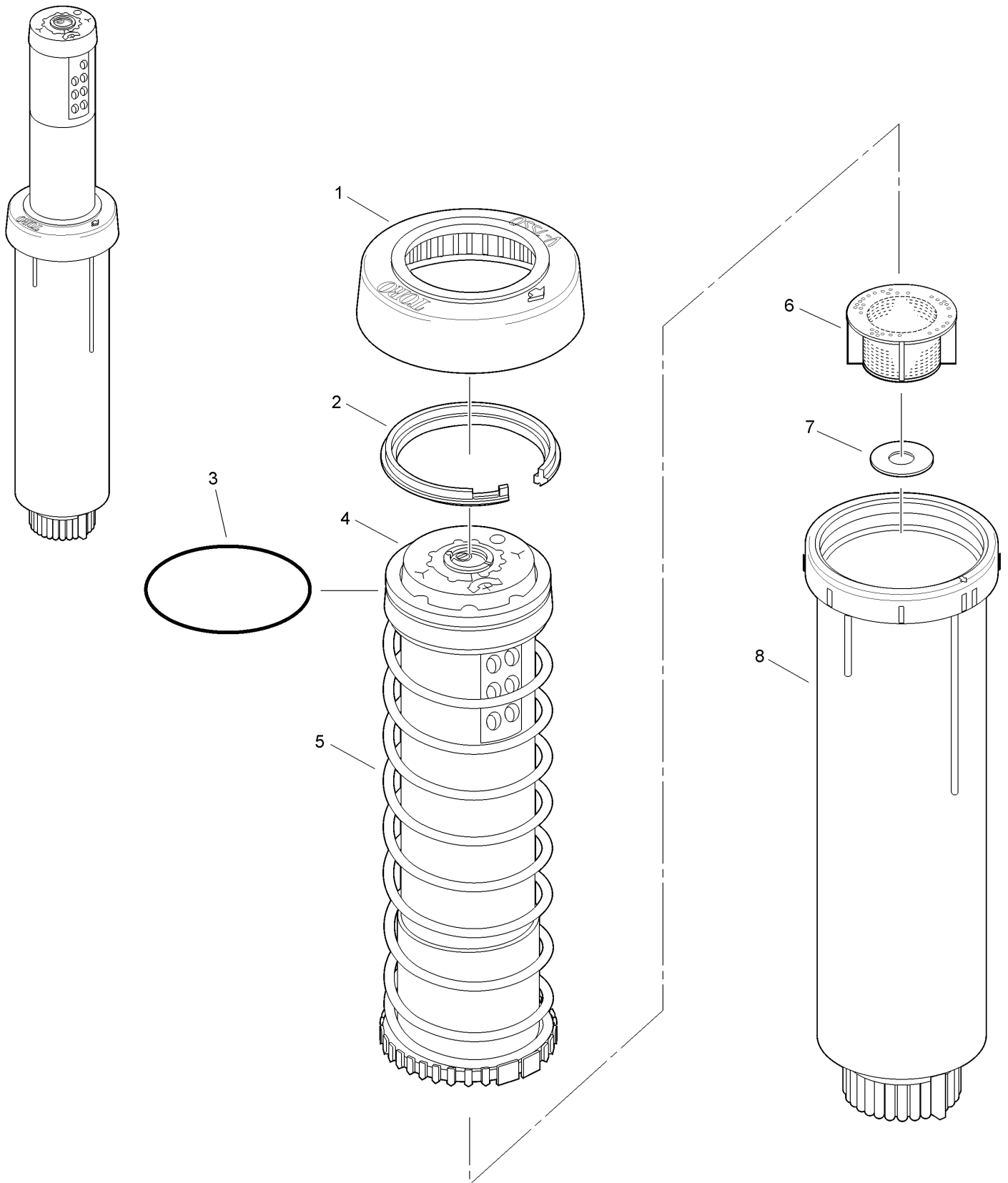


## V-1550-Shrub (continued)

● SERVICE ITEMS  
▲ No longer available

■ Not illustrated  
◆ Not serviced separately

# V-1550-4 components



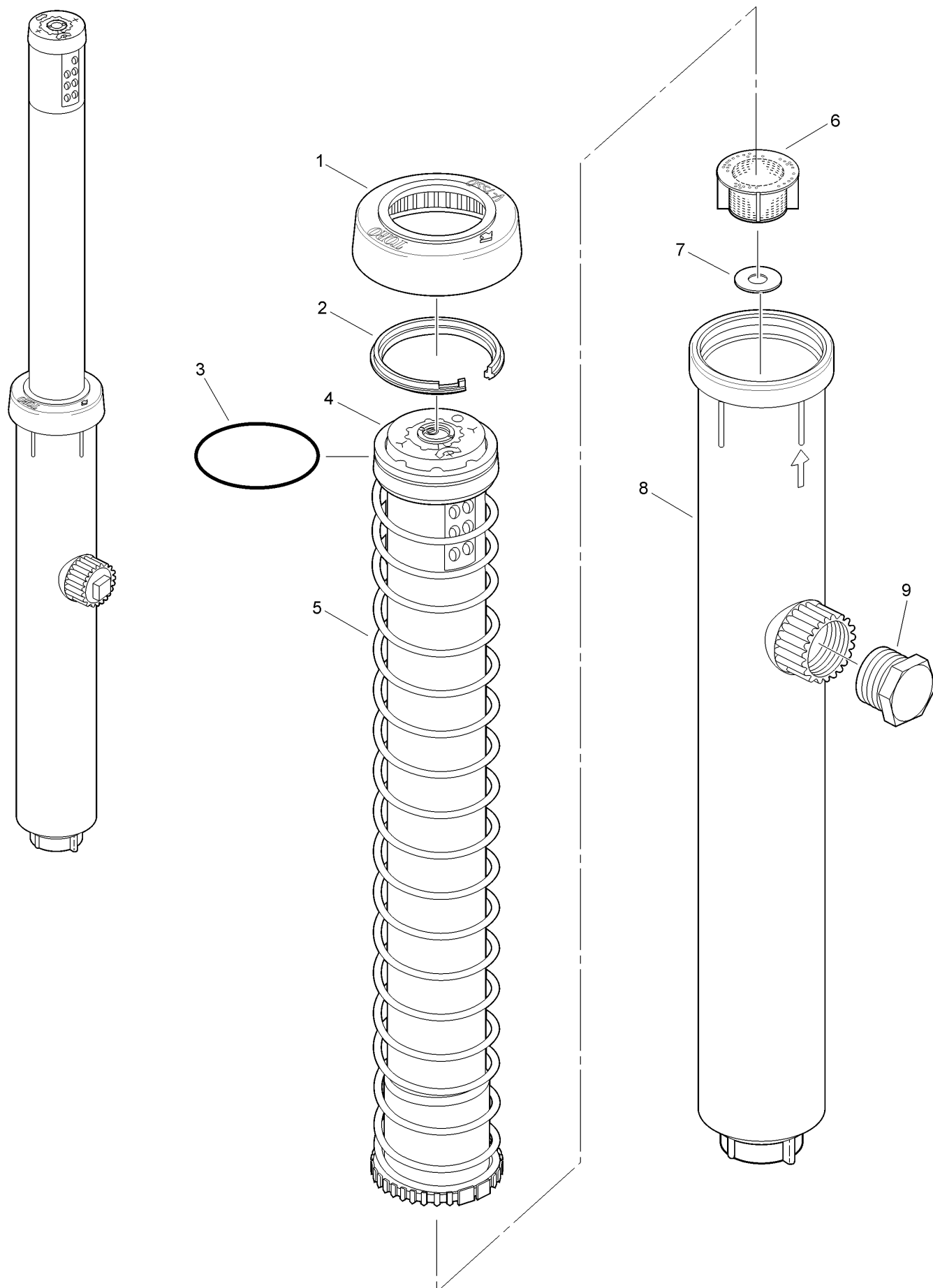
## V-1550-4 components (continued)

Ref.	Part Number	Qty.	Description	Ref.	Part Number	Qty.	Description
1	89-5840	1	Rubber Cover, Body	102-3808	1	Spring Retainer & Seal Kit, V1550	●■
1	89-7857	1	Rubber Cover, Body, Effluent	102-2247	1	Retainer W/ O-Ring (Includes 3 And 4)	●■
2	89-8657	1	Snap Ring	102-2798	1	V-1550-4Flp Riser Assy. (Full Circle, Low Flow, Low Pressure)	●■
3	363-4195	1	O-Ring	102-2799	1	V-1550-4Lflp Riser Assy. (Part Circle, Low Flow, Low Pressure)	●■
4		1	Retainer (See Service Items)	89-7350		Adjustment Key	●■
5		1	Riser Assy. (See Service Items)	995-83		Multi-Purpose Tool	●■
6	89-5847	1	Screen				
7	89-7561	1	Seal, Check, Com				
8	89-8658	1	Body				

● SERVICE ITEMS  
▲ No longer available

■ Not illustrated  
◆ Not serviced separately

# V-1550-12





## V-1550-12 (continued)

<i>Ref.</i>	<i>Part Number</i>	<i>Qty.</i>	<i>Description</i>
1	89-5840	1	Rubber Cover, Body
1	89-7857	1	Rubber Cover, Body, Effluent
2	89-8657	1	Snap Ring
3	363-4195	1	O-Ring
4		1	Retainer (See Service Items) ♦ ▲
5		1	Riser Assembly (See Service Items) ♦ ▲
6	89-9428	1	Screen
7	89-7561	1	Seal, Check
8	89-5972	1	Body ▲
9	363-3779	1	Plug, 3/4" Npt Male
	102-3808	1	Spring Retainer & Seal Kit, V1550

<i>Ref.</i>	<i>Part Number</i>	<i>Qty.</i>	<i>Description</i>
	102-2247	1	Retainer W/ O-Ring (Includes Items 3 And 4)
	102-2800	1	V-1550-12Flip Riser Assy. (Full Circle, Low Flow, Low Pressure)
	102-2801	1	V-1550-12Lflp Riser Assy. (Part Circle, Low Flow, Low Pressure)
	89-5877	1	V-1550-12 Riser Assy. (Part Circle, Standard)
	89-7657	1	V-1550-12F Riser Assy. (Full Circle, Standard)
	89-7350		Adjustment Key ● ■
	995-83		Multi-Purpose Tool ● ■

● SERVICE ITEMS  
▲ No longer available

■ Not illustrated  
♦ Not serviced separately

**Notes:**

**Notes:**



**Count on it.**