



Count on it.

Parts Catalog

30in Stand-On Aerator

Model No. 23518—Serial No. 313000001 and Up

Model No. 33518—Serial No. 313000001 and Up



Ordering Replacement Parts

To order replacement parts, please supply the part number, the quantity, and the description of each part desired.

Understanding Reference Numbers

Each identified part in an illustration has a reference number. The reference number for a part also appears in the parts list, along with other information about the part.

This catalog uses two special reference number formats, one to indicate parts in a service assembly and another to indicate the quantity of a given part in an illustration.

Service Assembly Reference Numbers

Parts in service assemblies have reference numbers in the form a:b. The a represents the reference number of the entire service assembly and the b represents a sequential number unique to each part within the service assembly.

For example, a wheel assembly might be identified by reference number 6, the tire by 6:1, the valve by 6:2, and the wheel by 6:3. When you order the assembly identified by reference number 6, you receive all parts identified by reference numbers 6:1, 6:2, and 6:3. However, you may also order any part individually. Reference numbers of this type appear in illustration and in parts lists.

Reference Numbers Indicating Quantity

In an illustration, if a reference number indicates more than one part, the reference number has the form nX y. The n represents the quantity of the part, the X is the multiplication symbol, and the y represents the reference number.

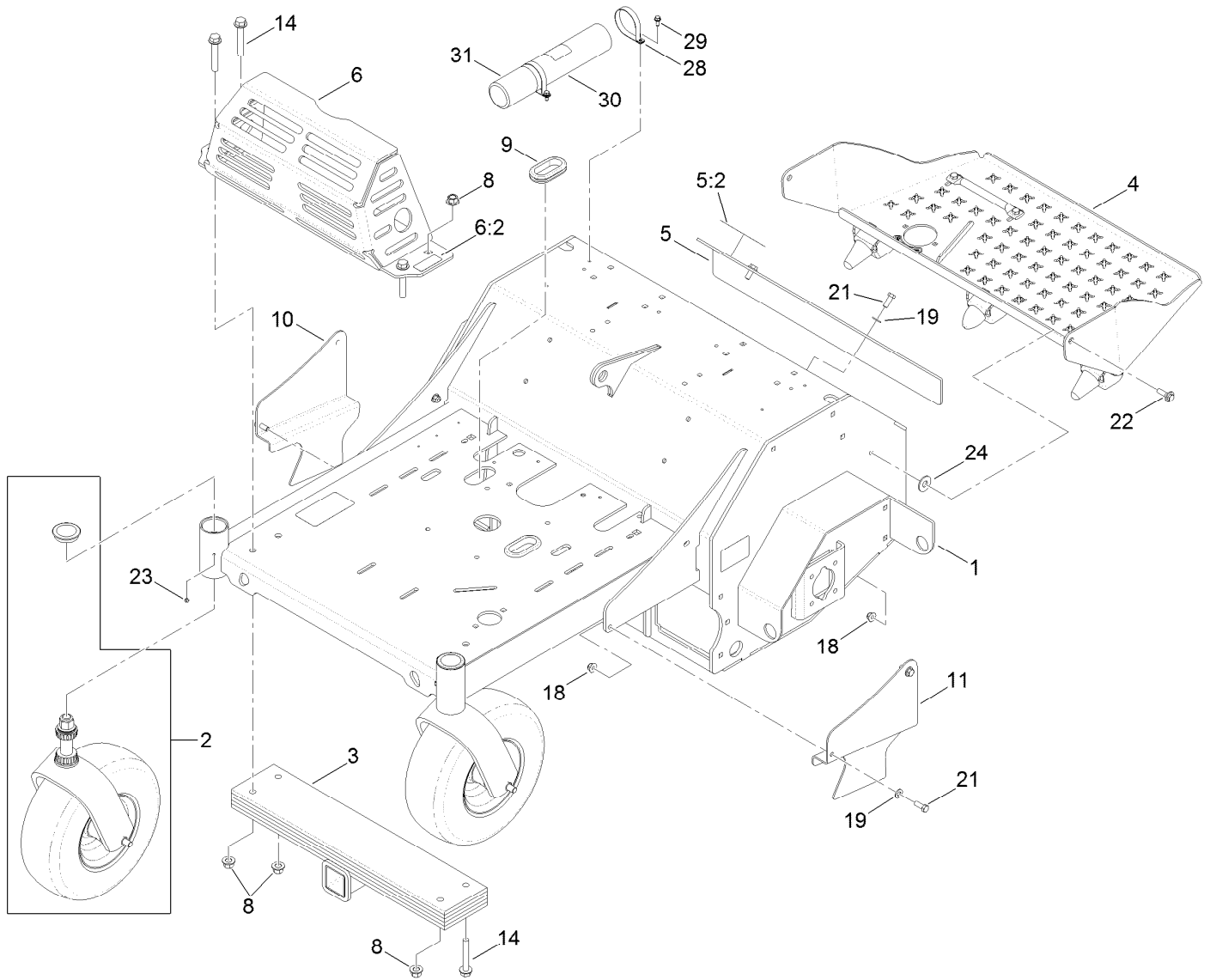
For example, in an illustration, the reference number 2X 37 means that two of the parts identified by reference number 37 are indicated.

List of Abbreviations

AR: as required	HLH: hex lag head	PTO: power-take-off
ASM: assembly	HOC: height-of-cut	RH: right hand
BBC: blade brake control	HSBH: hex socket button head	ROPS: roll-over protection system
BHTF: button head thread forming	HSFH: hex socket flat head	RRB: rear roller brush
CARR: carriage	HSH: hex socket head	SFH: slotted fillister head
CCW: counter clockwise	HWH: hex washer head	SHH: slotted hex head
CW: clockwise	HWHTF: hex washer head thread forming	SHWH: slotted hex washer head
DEG: degrees	HYD: hydraulic	SPH: slotted pan head
DPA: Dual Point Adjustment	LH: left hand	SQH: square head
ECM: electronic control module	LP: Liquefied Petroleum Gas	SRH: slotted round head
EXT: external	LPG: Liquefied Petroleum Gas	STD: standard
FH: flat head	NI: nylon insert	TAP: self tapping
GA: gauge	NPTF: national pipe thread fine	TTH: torx truss head
HD: heavy-duty	PFH: phillips flat head	
HF: hex flange	PPH: phillips pan head	
HH: hex head	PPHTF: phillips pan head thread forming	
HHF: hex head flange	PRH: phillips round head	
HHFTF: hex head flange thread forming	PTH: phillips truss head	
HJ: hex jam		

Contents

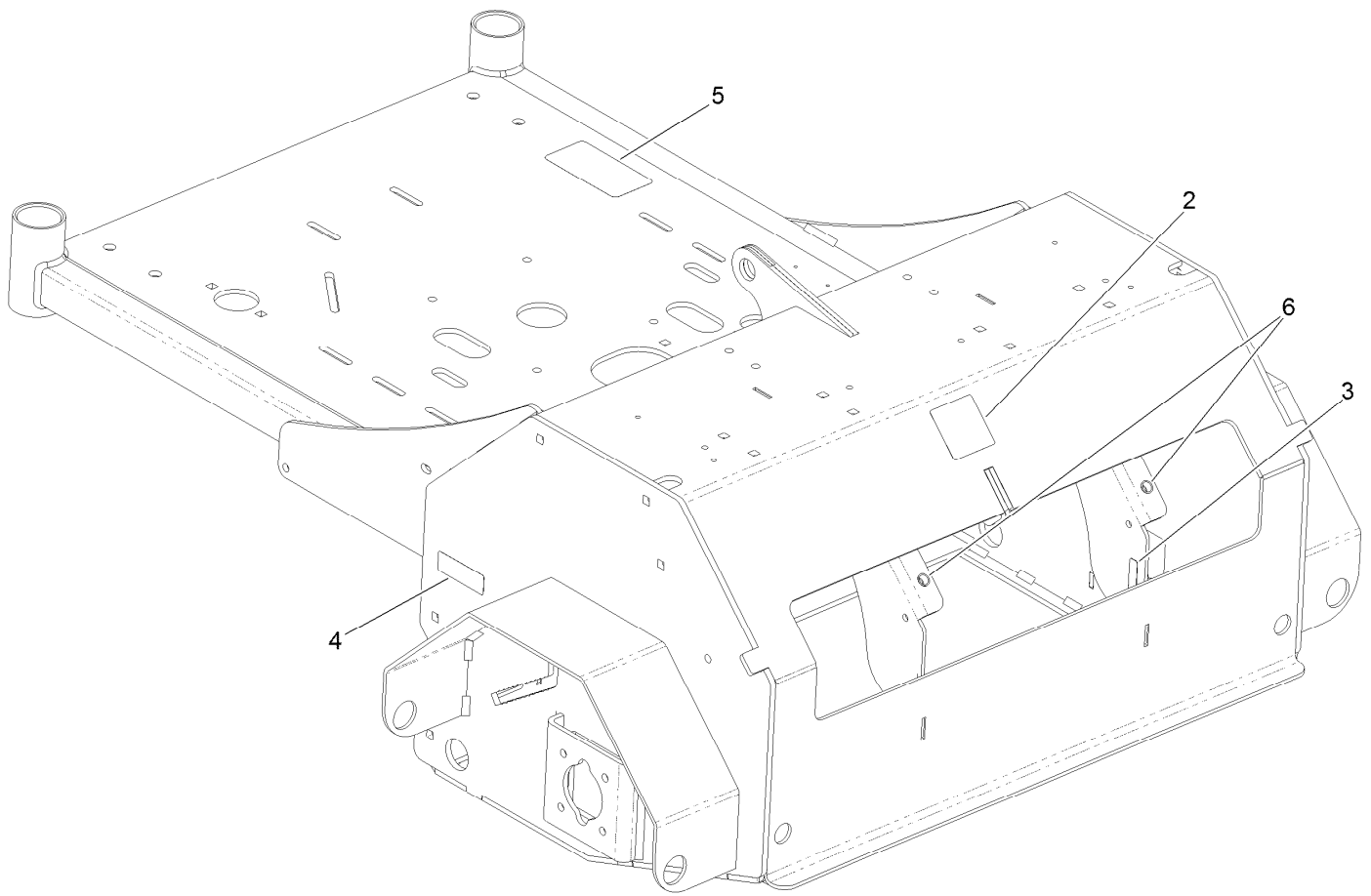
Main Frame Assembly	4
Main Frame Decal Assembly No. 116-8138	5
Platform Assembly No. 116-9135	6
Caster Wheel and Fork Assembly	7
Tower Assembly	8
Ground Drive Assembly	9
Idler Arm Assembly No. 116-9307	11
RH Transaxle Assembly No. 116-9712	12
LH Transaxle Assembly No. 116-9713	13
Axle and Bearing Assembly No. 116-9545	14
Tine Assembly	15
RH Tine Wheel Assembly No. 116-6738	16
LH Tine Wheel Assembly No. 116-6739	17
Fuel Assembly	18
Motion Control Assembly	19
Electrical Assembly	20
Auxiliary Hydraulic Assembly	21
Hydraulic Cylinder Assembly No. 116-6969	23
Hydraulic Pump Assembly No. 116-9129	24
Manifold W/Check and Relief Valve Assembly No. 116-9549	25
Engine Assembly	26



Main Frame Assembly

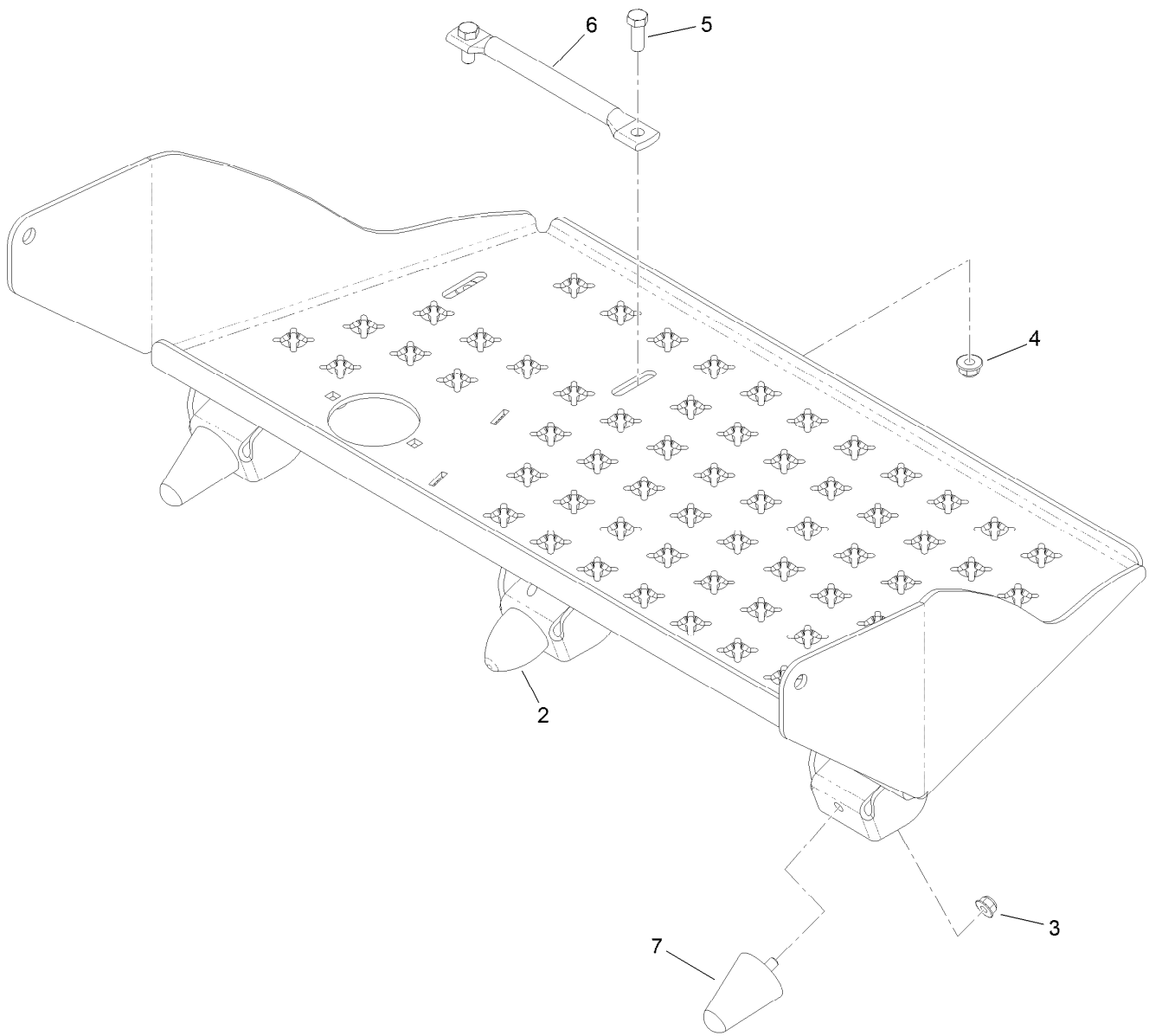
Ref.	Part Number	Qty.	Description	Ref.	Part Number	Qty.	Description
1	116-8138	1	Main Frame ASM	11	116-6611-01	1	Guard-Chain, LH
2		2	Front Caster ASM W/Fork ●	14	3234-40	4	Screw-HF
3	116-6536-01	1	Weight	18	104-8301	6	Nut-Flange, NI
4	116-9135	1	Platform ASM W/Rocker	19	3256-24	6	Washer-Flat
5	116-7300	1	Access Cover ASM	21	323-6	6	Screw-HH
5:2	121-6163	1	Decal-Tine Ground Operation (Ce)	22	614672	2	Bolt-Shoulder
6	116-8258	1	Muffler Guard ASM	23	1-811010	2	Plug
6:2	115-2047	2	Decal-Surface, Hot	24	3256-6	2	Washer-Flat
8	99-5107	4	Nut-Lock	28	107-1865	2	R-Clamp
9	126-0015	2	Grommet	29	32144-10	2	Screw-HWH
10	116-6612-01	1	Guard-Chain, RH	30	104-7050	1	Tube-Manual
				31	104-7048	1	Cap-Housing

● Not serviced separately



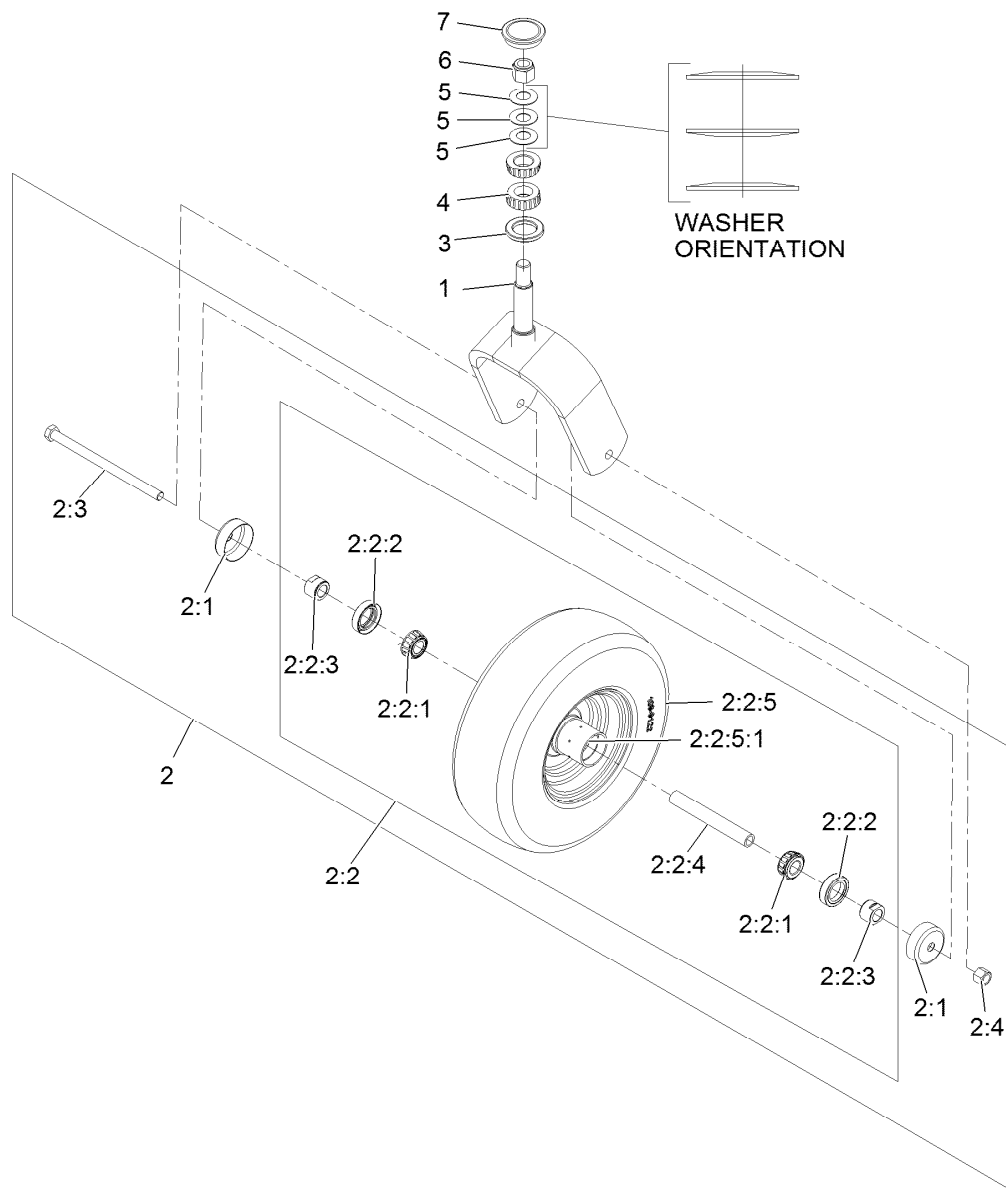
Main Frame Decal Assembly No. 116-8138

<i>Ref.</i>	<i>Part Number</i>	<i>Qty.</i>	<i>Description</i>
2	121-6150	1	Decal-Warning
3	120-9570	1	Decal-Warning
4	121-6161	2	Decal-Danger
5	116-9391	1	Decal-Belt Routing
6	32148-10	2	Insert-Nut



Platform Assembly No. 116-9135

<i>Ref.</i>	<i>Part Number</i>	<i>Qty.</i>	<i>Description</i>
2	114-1926	1	Bumper-Rubber
3	104-8300	3	Nut-Flange, NI
4	104-8301	2	Nut-Flange, NI
5	323-6	2	Screw-HH
6	116-8950-01	1	Rocker-Pedal, Foot
7	114-1925	2	Bumper-Rubber

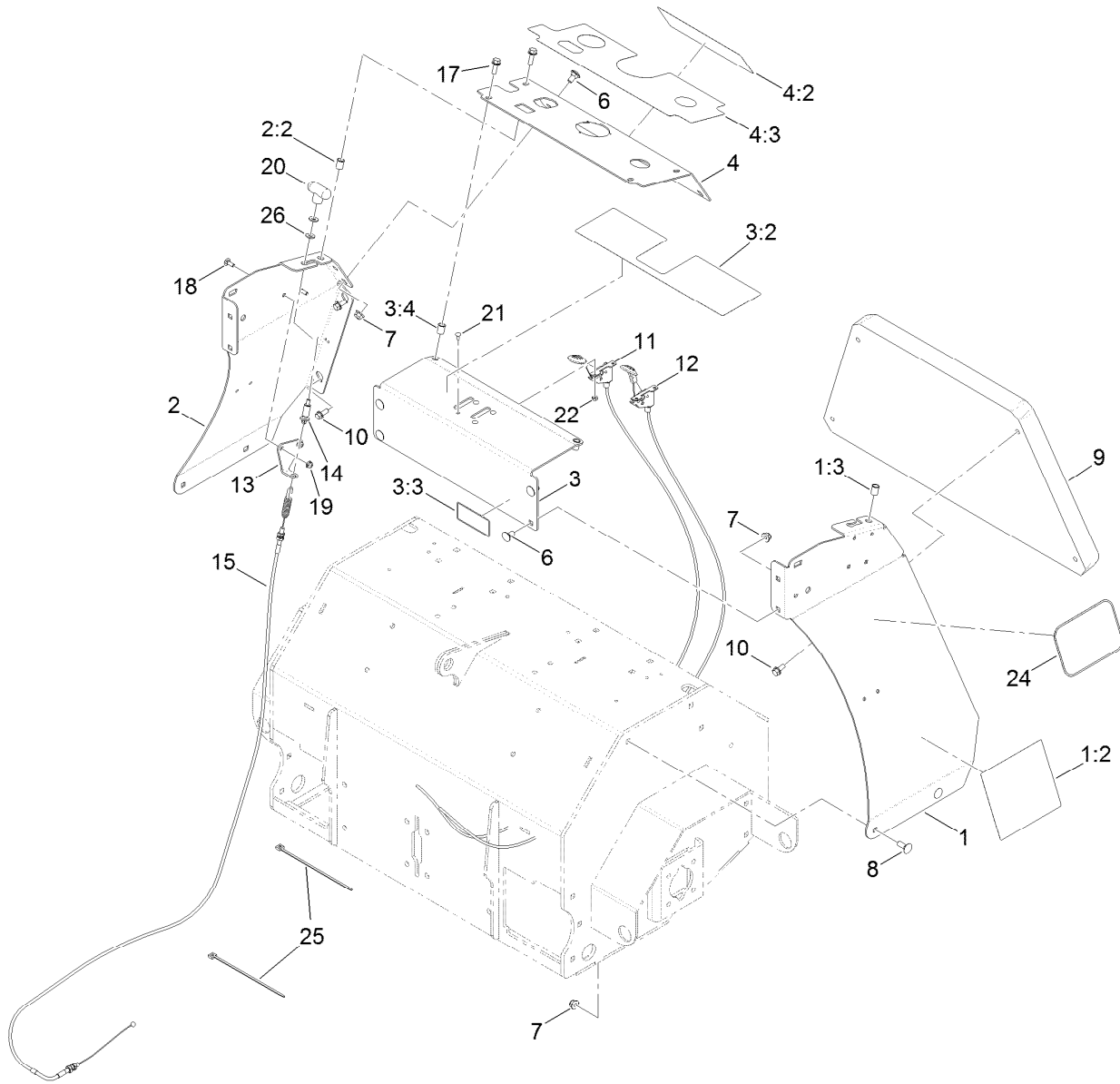


Caster Wheel and Fork Assembly

Ref.	Part Number	Qty.	Description	Ref.	Part Number	Qty.	Description
1	116-6704-01	1	Caster	2:2:5:1	1-633584	1	Bearing-Cup
2	109-9126	1	Wheel And Tire ASM	2:3	325-42	1	Screw-HH
2:1	103-2768	2	Guard-Seal	2:4	3296-23	1	Nut-Lock, NI
2:2		1	Wheel And Tire ASM ●	3	116-5647	1	Seal-Grease
2:2:1	1-633585	2	Bearing-Cone, Taper	4	1-543509	2	Bearing-Roller, Tapered
2:2:2	103-0063	2	Seal-Caster	5	1-633508	3	Washer-Bellville
2:2:3	103-3051	2	Spacer-Nut ■	6	3296-51	1	Nut-Lock, NI
2:2:4	103-3155	1	Axle-Caster	7	103-4882	1	Cap-Grease
2:2:5		1	Wheel And Tire ASM ●				

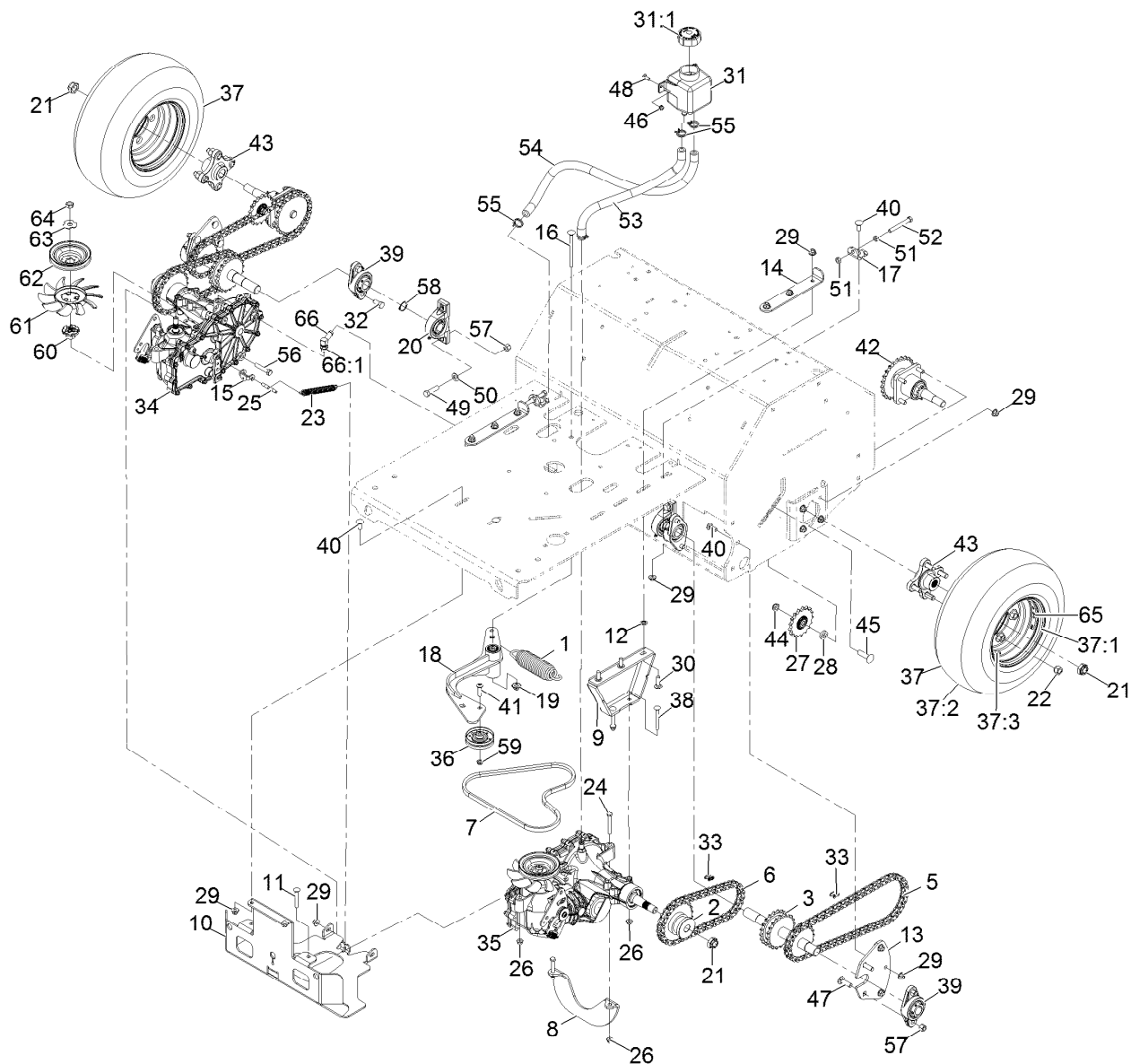
● Not serviced separately

■ Use Pro-Lock, Nut Type (P/N 1-840022, .5ml tube) on threads.



Tower Assembly

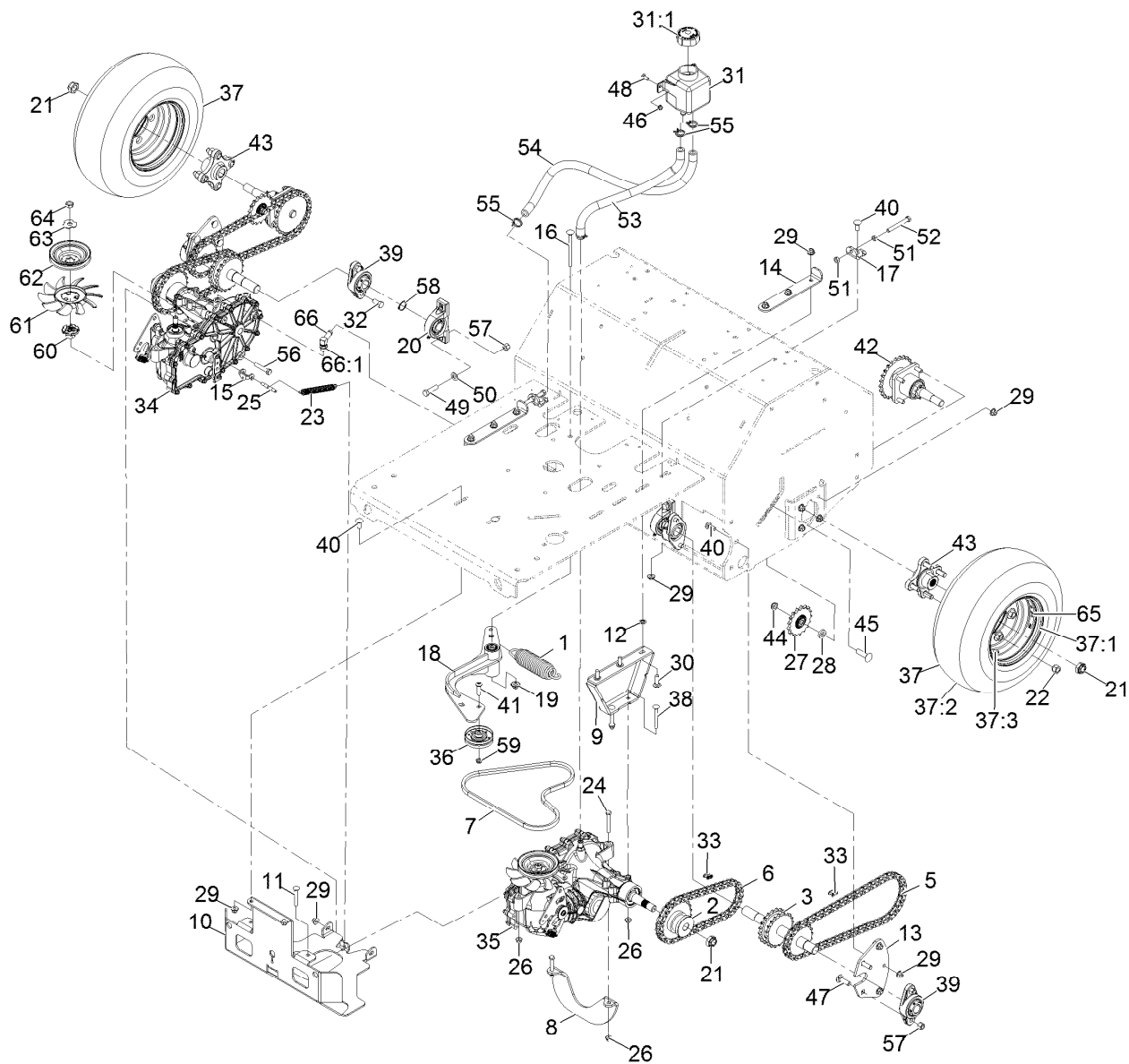
Ref.	Part Number	Qty.	Description	Ref.	Part Number	Qty.	Description
1	116-9387	1	LH Side Panel ASM	9	116-6959	1	Cushion-Black
1:2	116-9392	1	Decal-Service Aid Ce	10	3234-5	4	Screw-HHF
1:3	32148-7	1	Nut-Insert	11	109-9147	1	Control-Choke
2	116-7657	1	RH Side Panel ASM	12	109-3958	1	Control-Throttle
2:2	32148-7	1	Nut-Insert	13	116-6630	1	Bracket-Cable, Brake
3	116-6784	1	Plate ASM	14	116-7504	1	Link-Cable, Brake
3:2	121-6164	1	Decal-Warning, Control Panel	15	116-7503	1	Cable-Brake
3:3	121-6162	1	Decal-Warning, Tines	17	3234-29	4	Screw-HHF
3:4	32148-7	2	Nut-Insert	18	3229-1	2	Bolt-CARR
4	116-9142	1	Console ASM	19	104-7201	2	Nut-HF
4:2	121-6166	1	Decal-Danger	20	116-7607	1	Knob-Tee
4:3	116-9132	1	Decal-Danger, Control Panel	21	1-807513	4	Bolt-CARR
6	3231-1	6	Screw-CARR	22	3296-2	4	Nut-Lock, NI
7	104-8301	10	Nut-Flange, NI	24	62-5550	2	Decal
8	3231-2	4	Bolt-CARR	25	1-303335	2	Tie-Plastic
				26	3256-2	2	Washer-Flat



Ground Drive Assembly

Ref.	Part Number	Qty.	Description	Ref.	Part Number	Qty.	Description
1	116-6317	1	Spring-Extension	19	109-6658	1	Nut-Flange, NI
2	116-9305	2	Hub-Drive, Chain	20	116-6756	2	Bearing-Pillow Block
3	116-9684	2	Jackshaft	21	116-2839	4	Nut-Lock
5	116-6895	2	Chain-Roller, #50	22	242-50	8	Nut-Lug
6	116-6896	2	Link-#50 Roller Chain, 47	23	76-4660	1	Spring-Door
7	116-8874	1	Belt-4L Section	24	322-12	2	Screw-HH
8	116-9127-03	1	Angle Brace	25	116-7596	1	Pin-Brake, Park
9	116-9710-03	2	Mount-Transmission	26	104-8300	8	Nut-Flange, NI
10	116-9711-03	1	Guard-Transmission	27	116-6719	2	Sprocket-Idler, 17T
11	3230-7	2	Bolt-CARR	28	104-8417	2	Washer
12	107-3154	6	Nut-Push	29	104-8301	26	Nut-Flange, NI
13	116-6596-01	2	Plate-Jackshaft	30	3231-25	6	Bolt-CARR
14	116-6619	2	Plate-Adjustment, Transmission	31	109-2250	1	Vent-Tank, Hydro
15	116-7597	1	Yoke-Park Brake	31:1	109-3320	1	Cap-Reservoir, HYD
16	9000779	1	Bolt	32	116-7109	4	Screw-HH
17	116-6723	2	Bracket-Hydro, Adjust	33	116-6897	4	Link-Connecting, #50
18	116-9307	1	Idler Arm ASM	34	116-9712	1	RH Transaxle ASM (No Fan)
				35	116-9713	1	LH Transaxle ASM (No Fan)

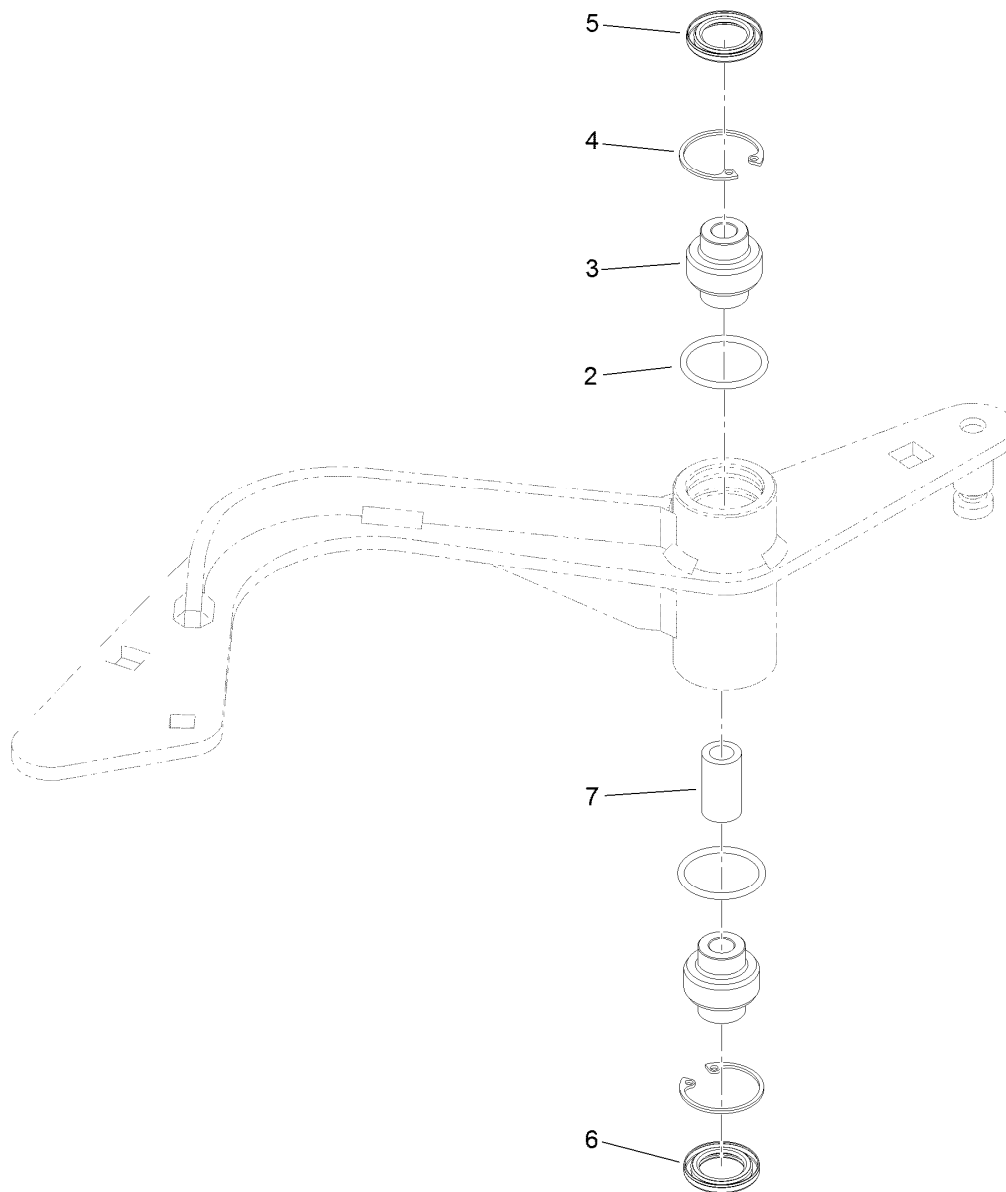
● Use Pro-Lock, Nut Type (P/N 1-840022, .5ml tube) on threads.



Ground Drive Assembly (continued)

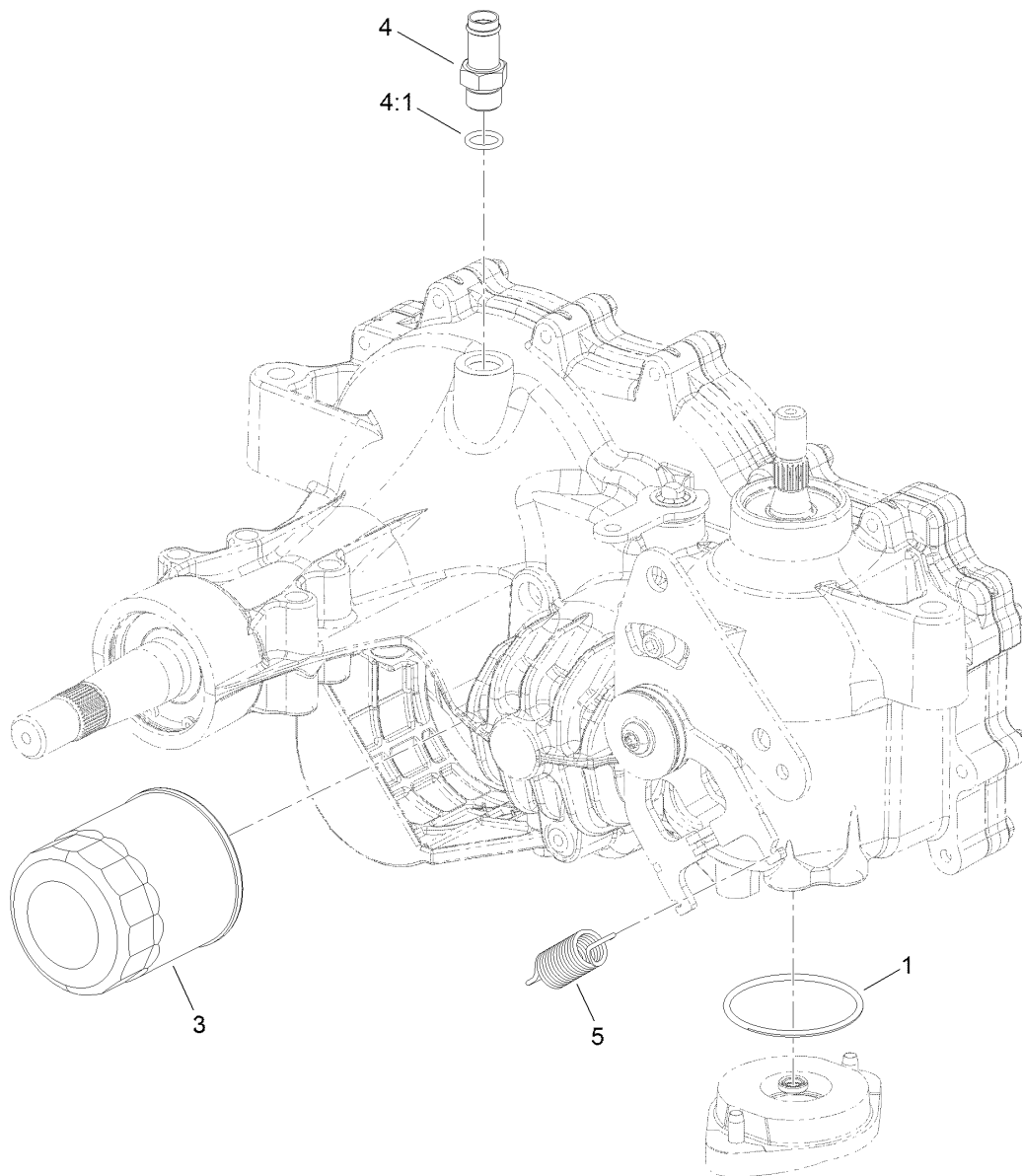
Ref.	Part Number	Qty.	Description	Ref.	Part Number	Qty.	Description
36	116-9715	1	Pulley-Idler	51	3217-7	4	Nut-Hex
37	116-6932	2	Tire ASM (16 X 6.50-8)	52	99-8664	2	Screw-HH
37:1	116-6977	1	Rim (8 X 5.375)	53	116-6775	1	Hose-Hydraulic
37:2	116-6978	1	Tire (16 X 6.50-8, 4 Ply)	54	116-6776	1	Hose-Hydraulic
37:3	232-27	1	Stem-Valve	55	109-3322	4	Clamp-Hose
38	3230-9	4	Screw-CARR	56	323-10	2	Screw-HH
39	116-6777	4	Bearing-Flange, 2 Bolt	57	3296-48	8	Nut-Lock, NI
40	3231-2	10	Bolt-CARR	58	32151-29	2	Ring-Retaining
41	116-9927	1	Screw-HSBH	59	3296-59	1	Nut-Lock, NI
42	116-9545	2	Axle And Bearing ASM	60	116-9705	2	Hub-Pulley
43	116-3872	2	Hub-Offset	61	116-9706	2	Fan
44	3296-45	2	Nut-Lock, NI	62	116-9707	2	Pulley
45	3233-14	2	Screw-CARR	63	116-9708	2	Washer-Slotted
46	104-7201	2	Nut-HF	64	116-9714	2	Nut-Jam, Hex ●
47	3232-3	4	Bolt-CARR	65	116-9666	2	Decal-Torques, Wheel Hub And Nut
48	3229-1	2	Bolt-CARR	66	109-6449	1	Fitting-Elbow, 90
49	324-6	4	Screw-HH	66:1	237-42	1	O-Ring
50	3256-25	4	Washer-Flat				

● Use Pro-Lock, Nut Type (P/N 1-840022, .5ml tube) on threads.



Idler Arm Assembly No. 116-9307

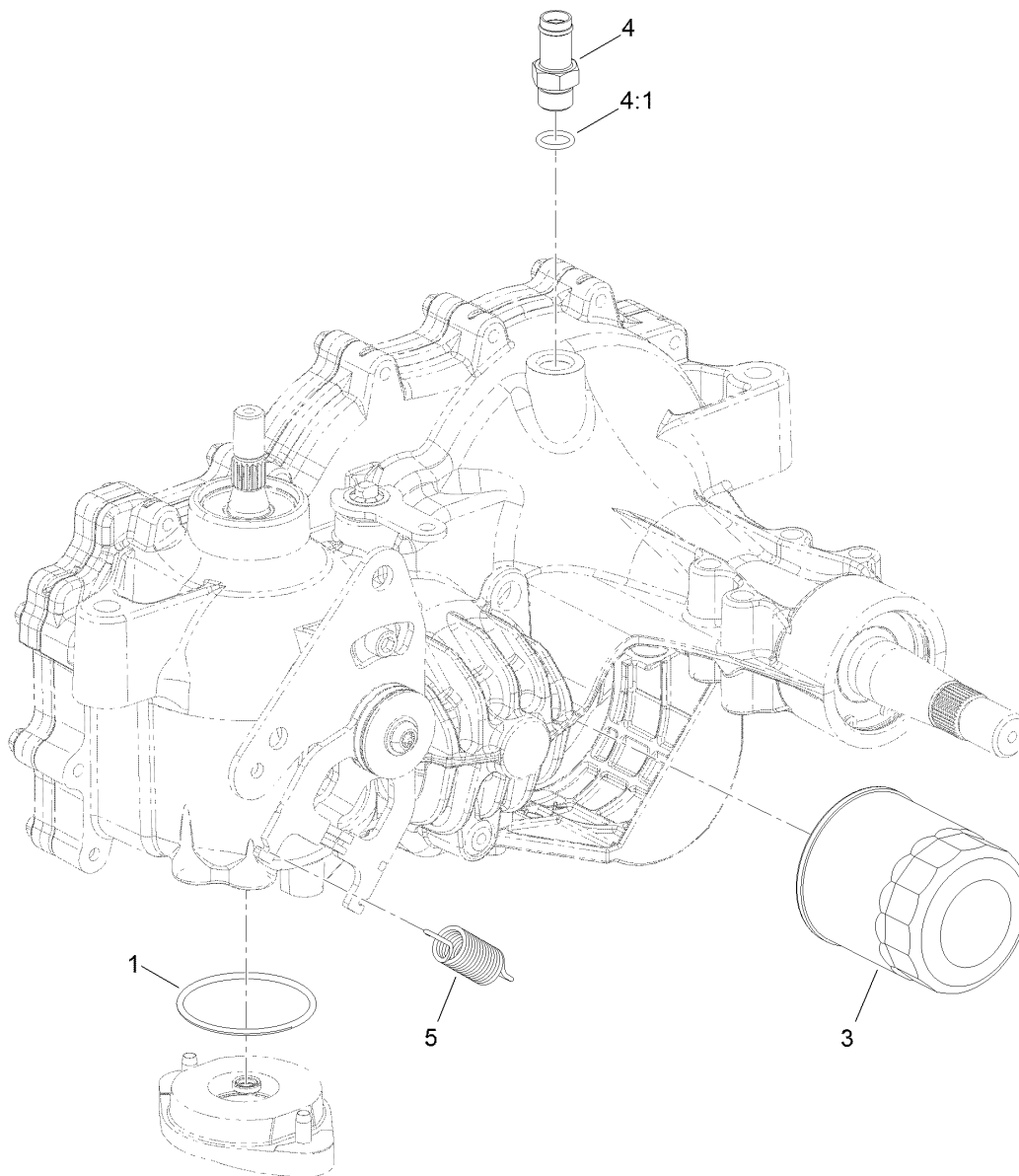
<i>Ref.</i>	<i>Part Number</i>	<i>Qty.</i>	<i>Description</i>
2	106-7159	2	O-Ring
3	103-3504	2	Bearing-Spherical
4	32120-10	2	Ring-Snap
5	103-3506	1	Seal-Single Lip
6	103-3505	1	Seal-Double Lip
7	1-603401	1	Spacer-Fender



RH Transaxle Assembly No. 116-9712

<i>Ref.</i>	<i>Part Number</i>	<i>Qty.</i>	<i>Description</i>
1	109-3540	1	O Ring-Seal
3	109-3321	1	Element-Oil Filter, HYD
4	109-3278	1	Adapter-Straight
4:1	1-603921	1	O-Ring
5	109-5592	1	Spring-Extension
99	109-3537	1	Complete Seal Kit ●

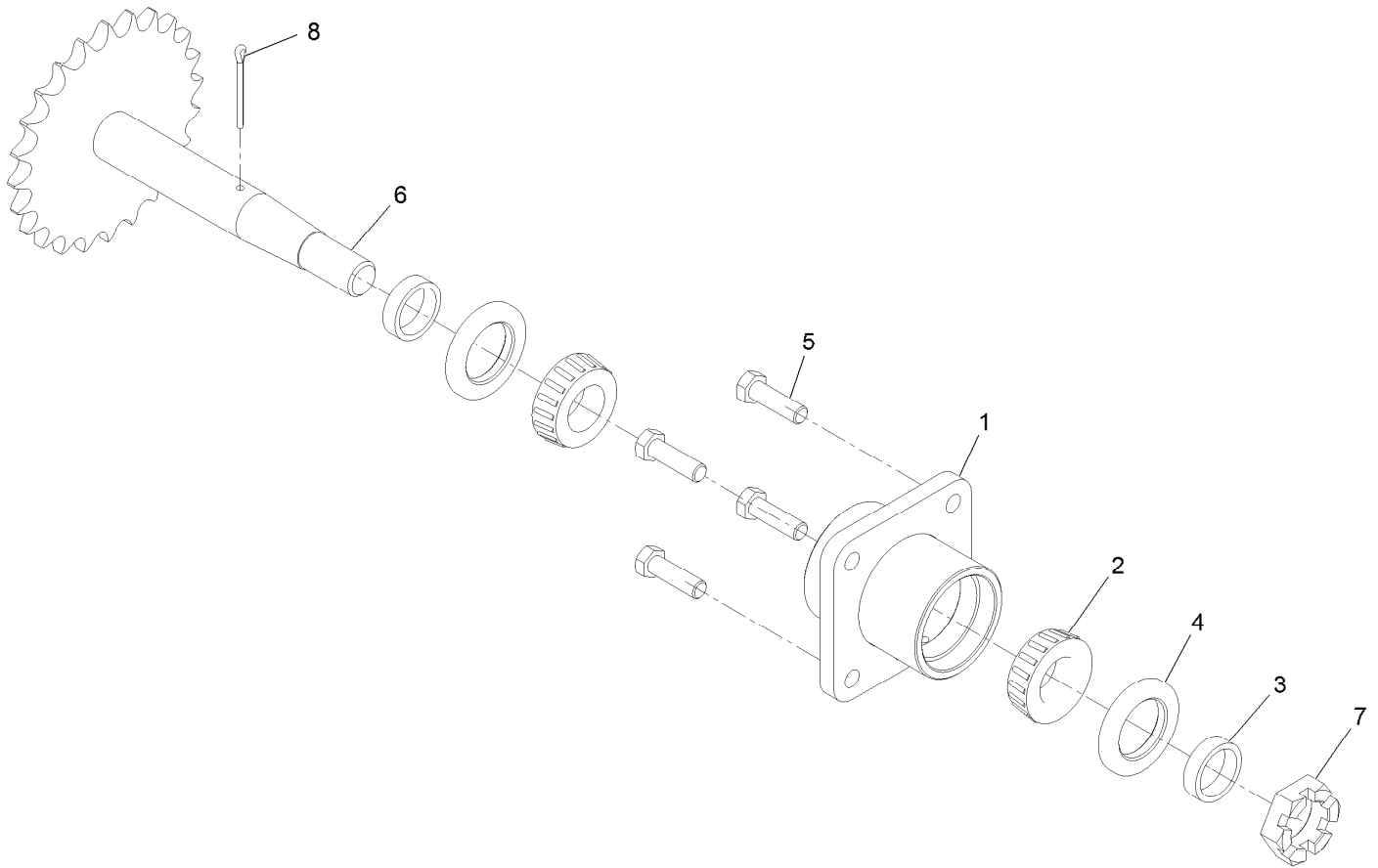
● Not illustrated



LH Transaxle Assembly No. 116-9713

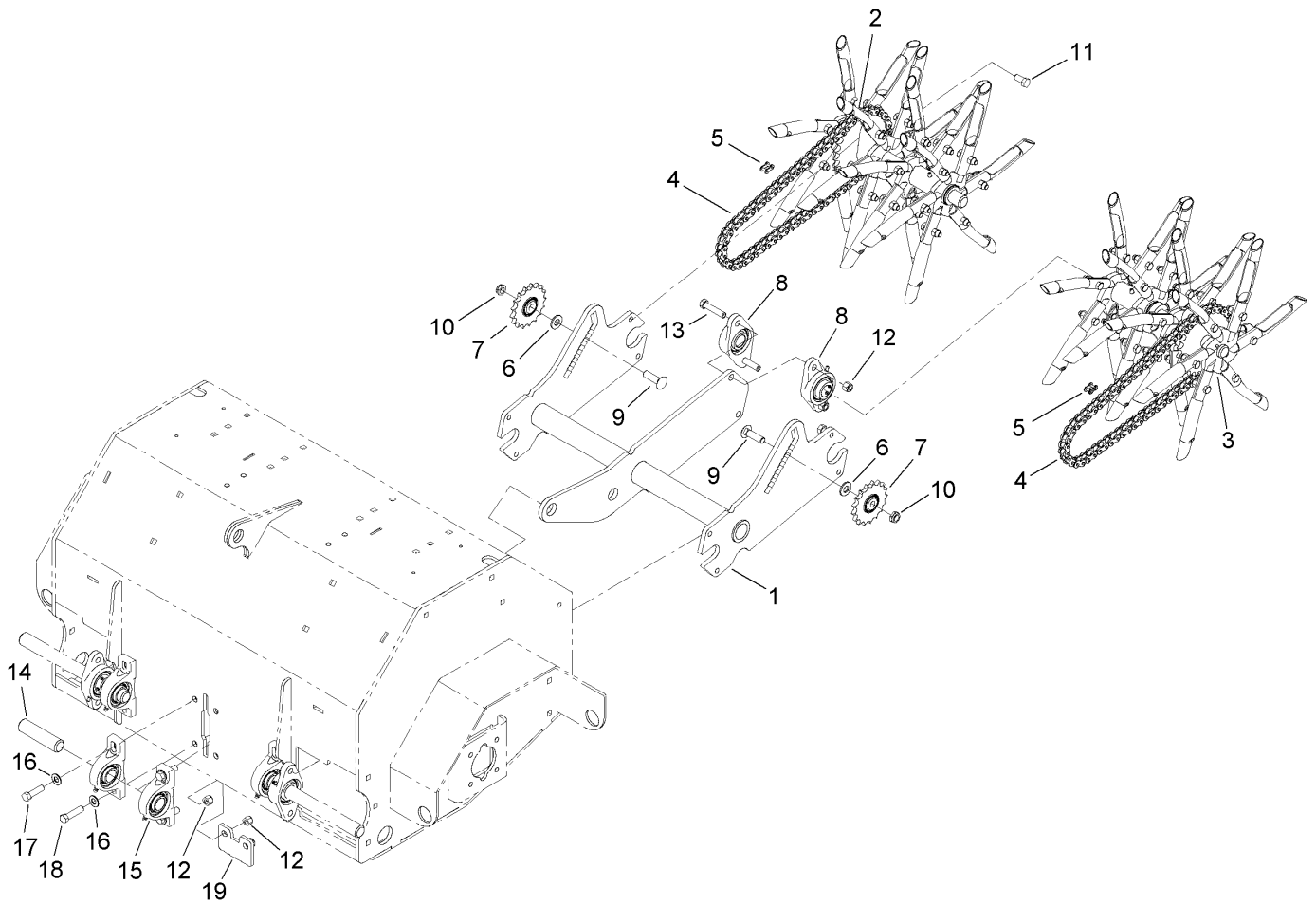
<i>Ref.</i>	<i>Part Number</i>	<i>Qty.</i>	<i>Description</i>
1	109-3540	1	O Ring-Seal
3	109-3321	1	Element-Oil Filter, HYD
4	109-3278	1	Adapter-Straight
4:1	1-603921	1	O-Ring
5	109-5592	1	Spring-Extension
99	109-3537	1	Complete Seal Kit ●

● Not illustrated



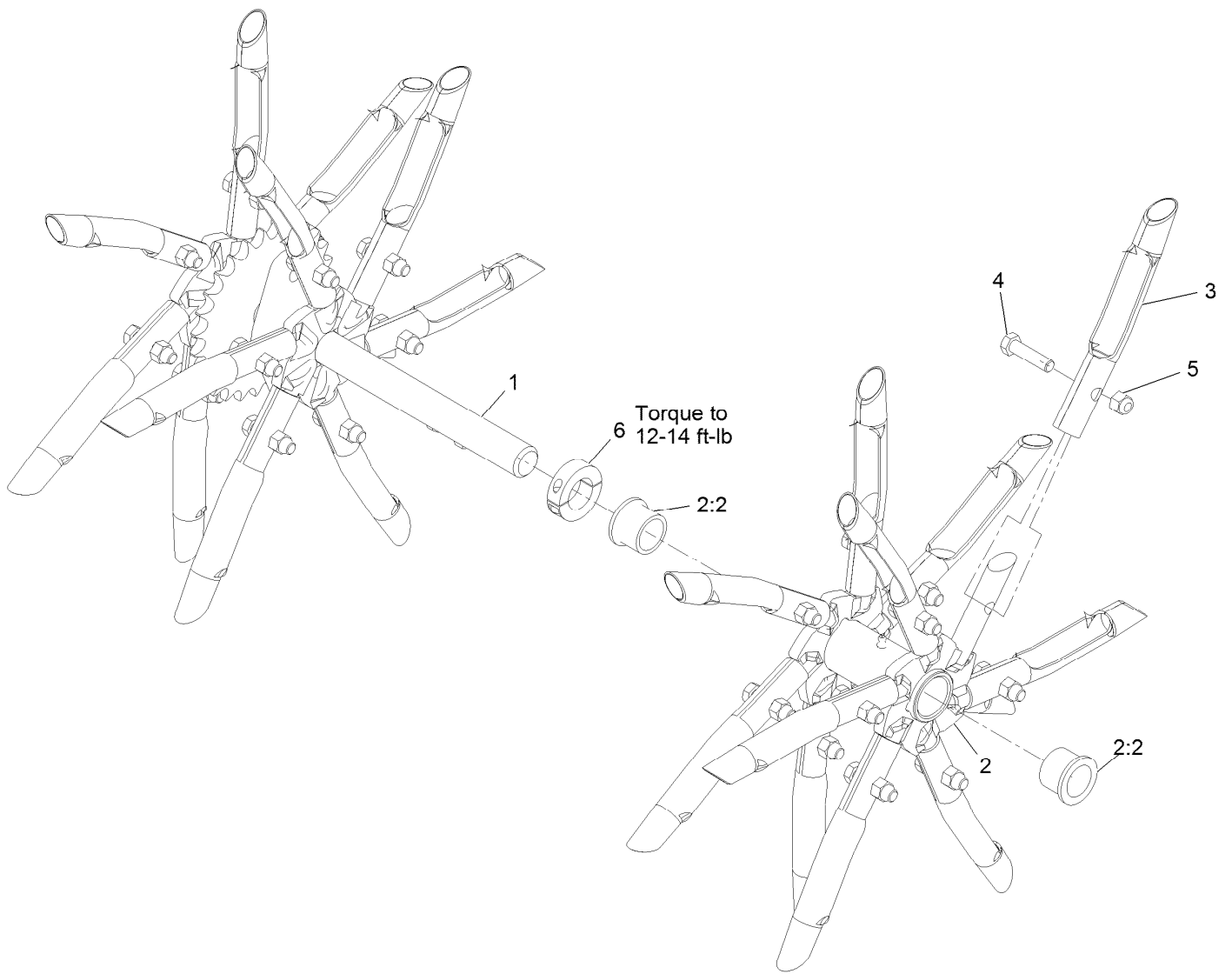
Axle and Bearing Assembly No. 116-9545

<i>Ref.</i>	<i>Part Number</i>	<i>Qty.</i>	<i>Description</i>
1	116-6746-01	1	Mount-Bearing, Wheel
2	1-543509	2	Bearing-Roller, Tapered
3	116-6758	2	Spacer
4	1-543511	2	Seal-Grease
5	323-7	4	Screw-HH
6	116-9484	1	Axle
7	99-3139	1	Nut
8	1-806800	1	Pin-Cotter



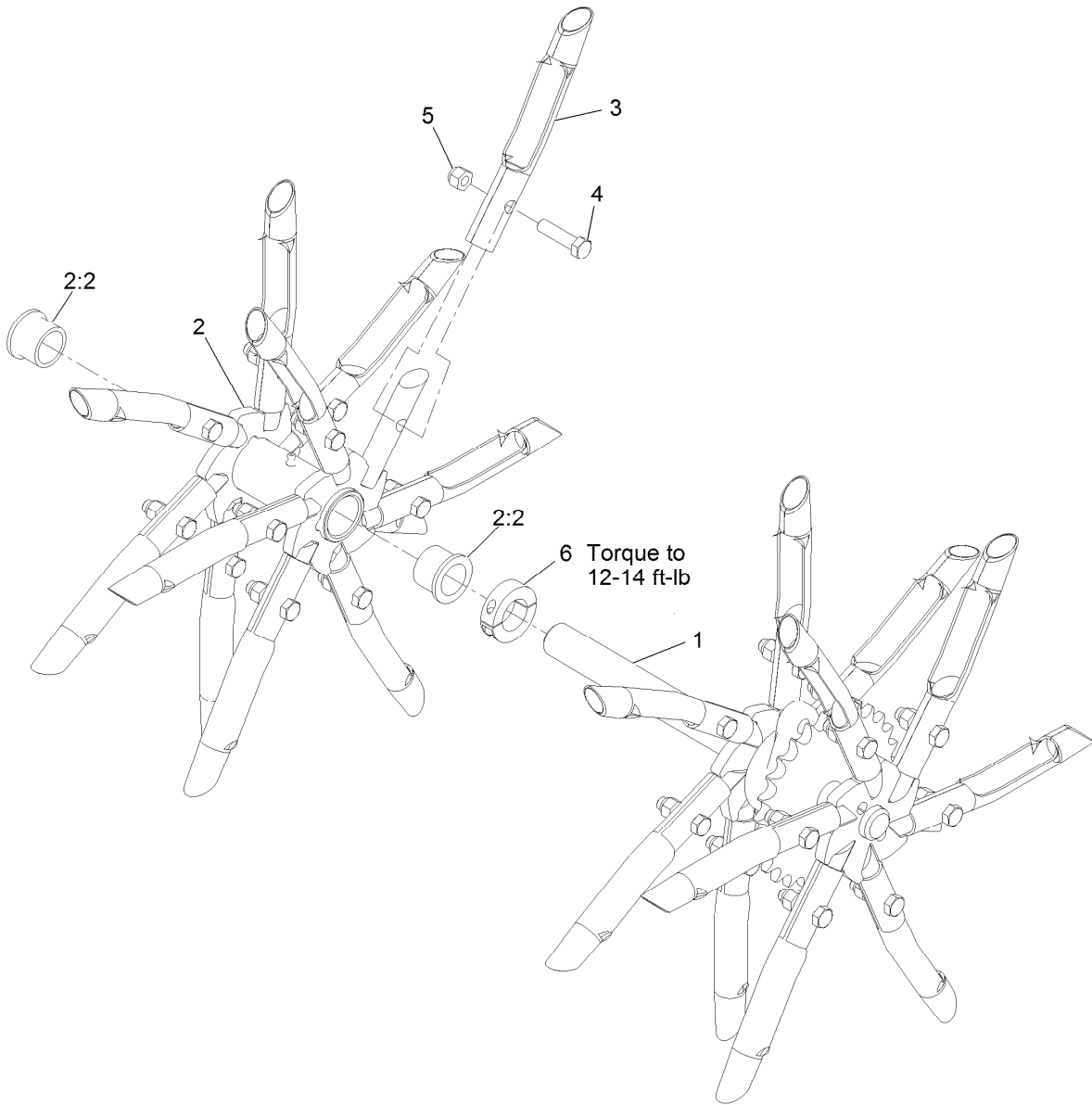
Tine Assembly

<i>Ref.</i>	<i>Part Number</i>	<i>Qty.</i>	<i>Description</i>	<i>Ref.</i>	<i>Part Number</i>	<i>Qty.</i>	<i>Description</i>
1	116-6553-03	1	Arm-Trail	11	116-7109	4	Screw-HH
2	116-6738	1	RH Tine Wheel ASM	12	3296-48	6	Nut-Lock, NI
3	116-6739	1	LH Tine Wheel ASM	13	324-8	2	Screw-HH
4	116-6895	2	Chain-Roller, #50	14	116-6629	1	Shaft
5	116-6897	2	Link-Connecting, #50	15	116-6756	2	Bearing-Pillow Block
6	87-7270	2	Washer-Thrust	16	3256-25	4	Washer-Flat
7	116-6719	2	Sprocket-Idler, 17T	17	324-6	2	Screw-HH
8	116-6777	2	Bearing-Flange, 2 Bolt	18	324-7	2	Screw-HH
9	3233-14	2	Screw-CARR	19	116-7327-01	1	Plate-Downstop
10	3296-45	2	Nut-Lock, NI				



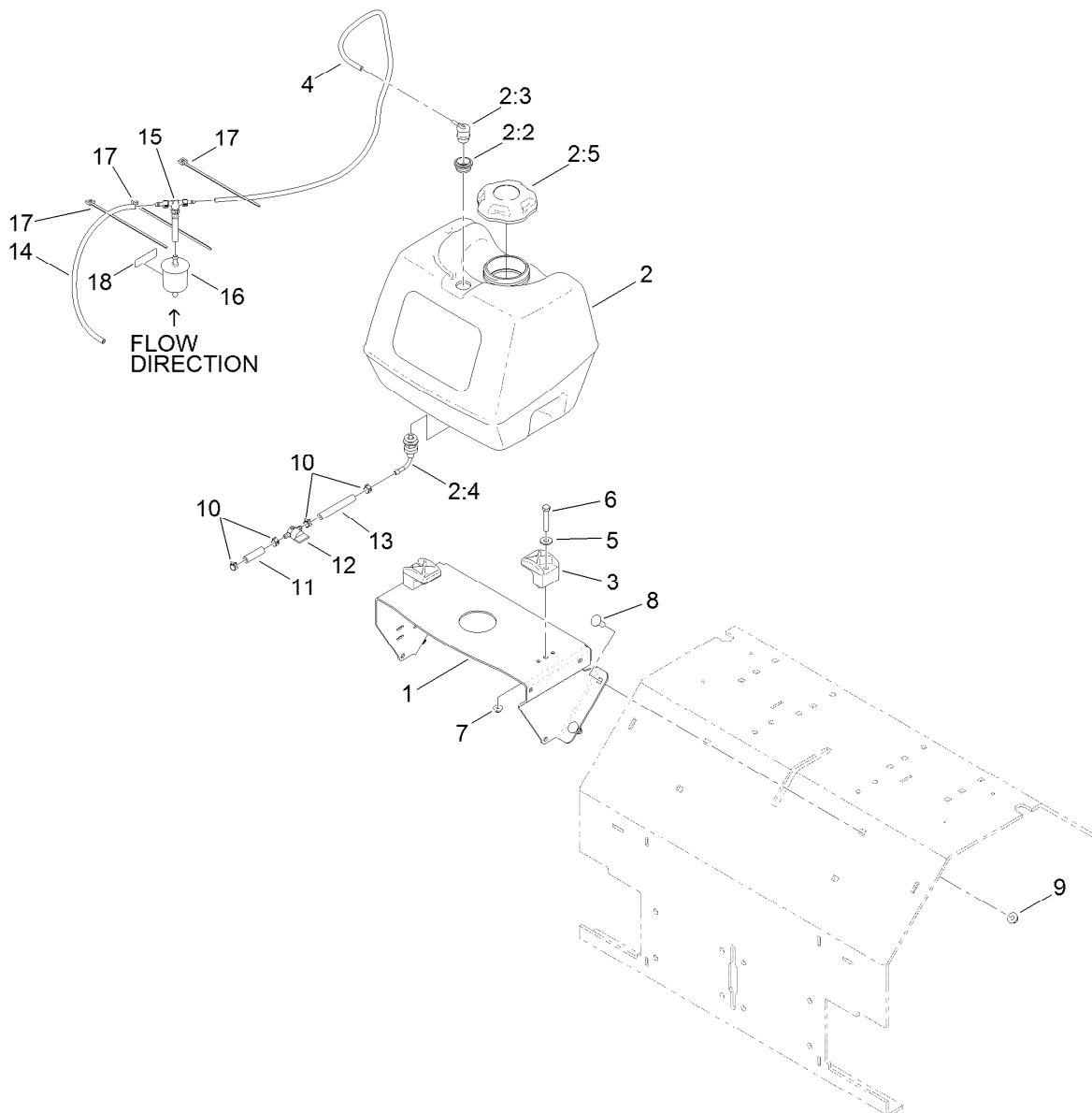
RH Tine Wheel Assembly No. 116-6738

Ref.	Part Number	Qty.	Description
1	116-6727	1	Shaft-Tine, RH
2	116-6731	1	Float Tine Shaft ASM
2:2	94-8949	2	Bushing-Flange
3	121-4894	24	Tine-Coring
4	323-8	24	Screw-HH
5	3296-39	24	Nut-Lock, NI
6	116-7271	1	Collar-Locking



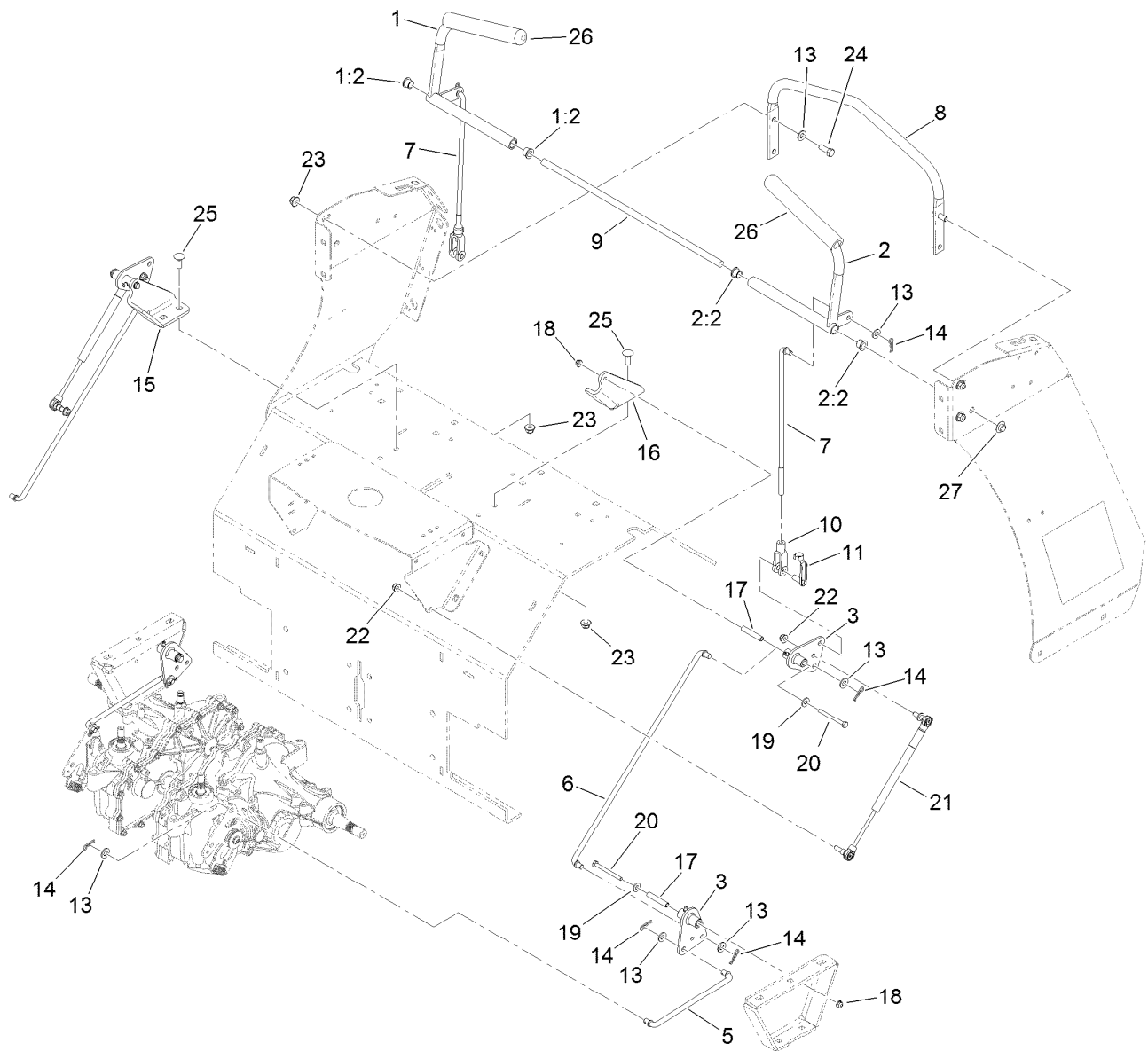
LH Tine Wheel Assembly No. 116-6739

<i>Ref.</i>	<i>Part Number</i>	<i>Qty.</i>	<i>Description</i>
1	116-6728	1	Shaft-Tine, LH
2	116-6731	1	Float Tine Shaft ASM
2:2	94-8949	2	Bushing-Flange
3	121-4894	24	Tine-Coring
4	323-8	24	Screw-HH
5	3296-39	24	Nut-Lock, NI
6	116-7271	1	Collar-Locking



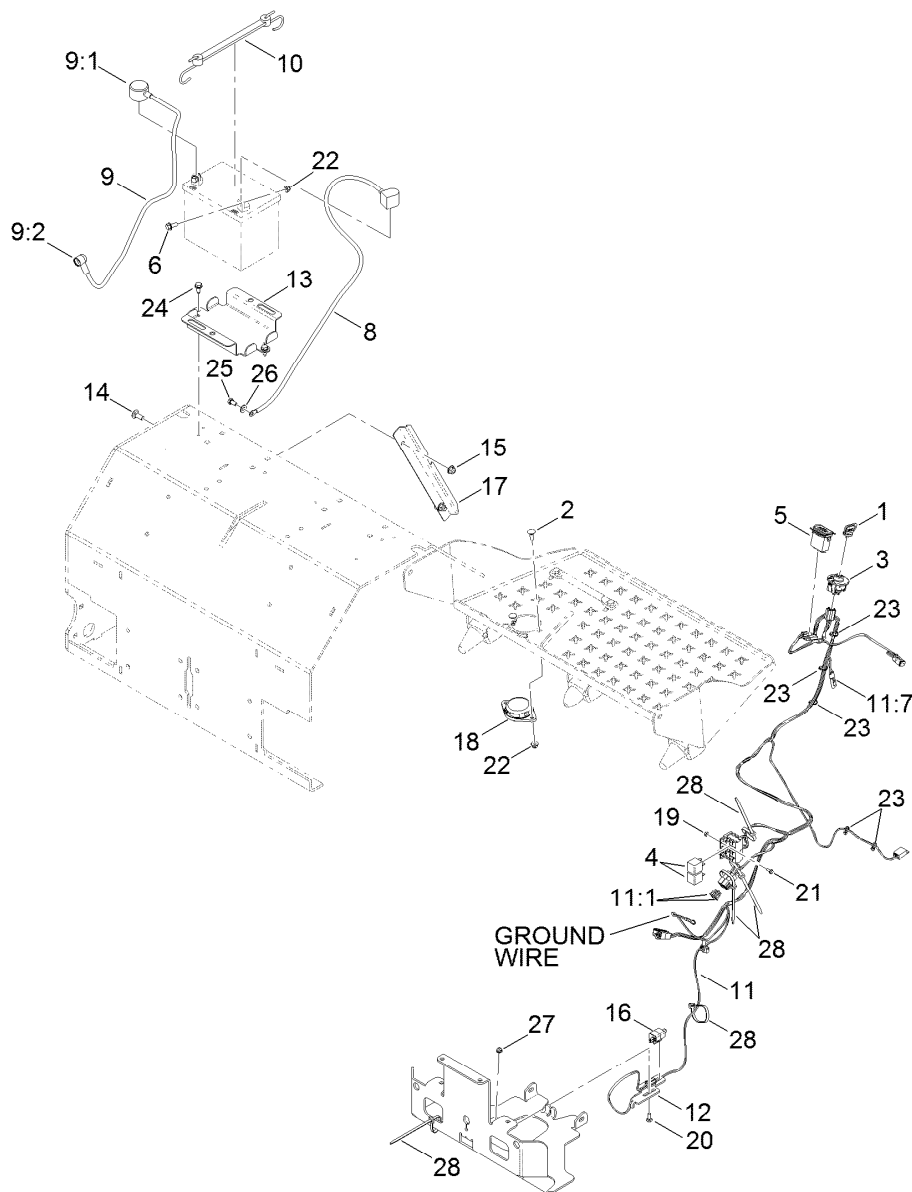
Fuel Assembly

<i>Ref.</i>	<i>Part Number</i>	<i>Qty.</i>	<i>Description</i>	<i>Ref.</i>	<i>Part Number</i>	<i>Qty.</i>	<i>Description</i>
1	116-9541-01	1	Support-Tank, Fuel	8	3231-22	4	Screw-CARR
2	119-7899	1	Fuel Tank ASM	9	104-8301	4	Nut-Flange, NI
2:2	114-0284	1	Grommet	10	2412-98	4	Clamp-Hose
2:3	114-0285	1	Valve-Rollover	11	119-7856	1	Hose-Fuel
2:4	103-2605	1	Fitting-Fuel, Bulkhead	12	1-603770	1	Valve-Fuel
2:5	120-5461	1	Cap-Fuel, Ratcheting	13	105-8342	1	Hose-Fuel
3	107-4543	2	Clamp	14	115-7872	1	Hose-Fuel
4	116-4346	1	Hose-Emissions	15	116-5464	1	Tee And Check
5	3256-3	2	Washer-Flat	16	120-2235	1	Filter-Fuel
6	322-10	2	Screw-HH	17	1-303335	3	Tie-Plastic
7	104-8300	2	Nut-Flange, NI	18	116-4769	1	Decal-Filter, Emissions



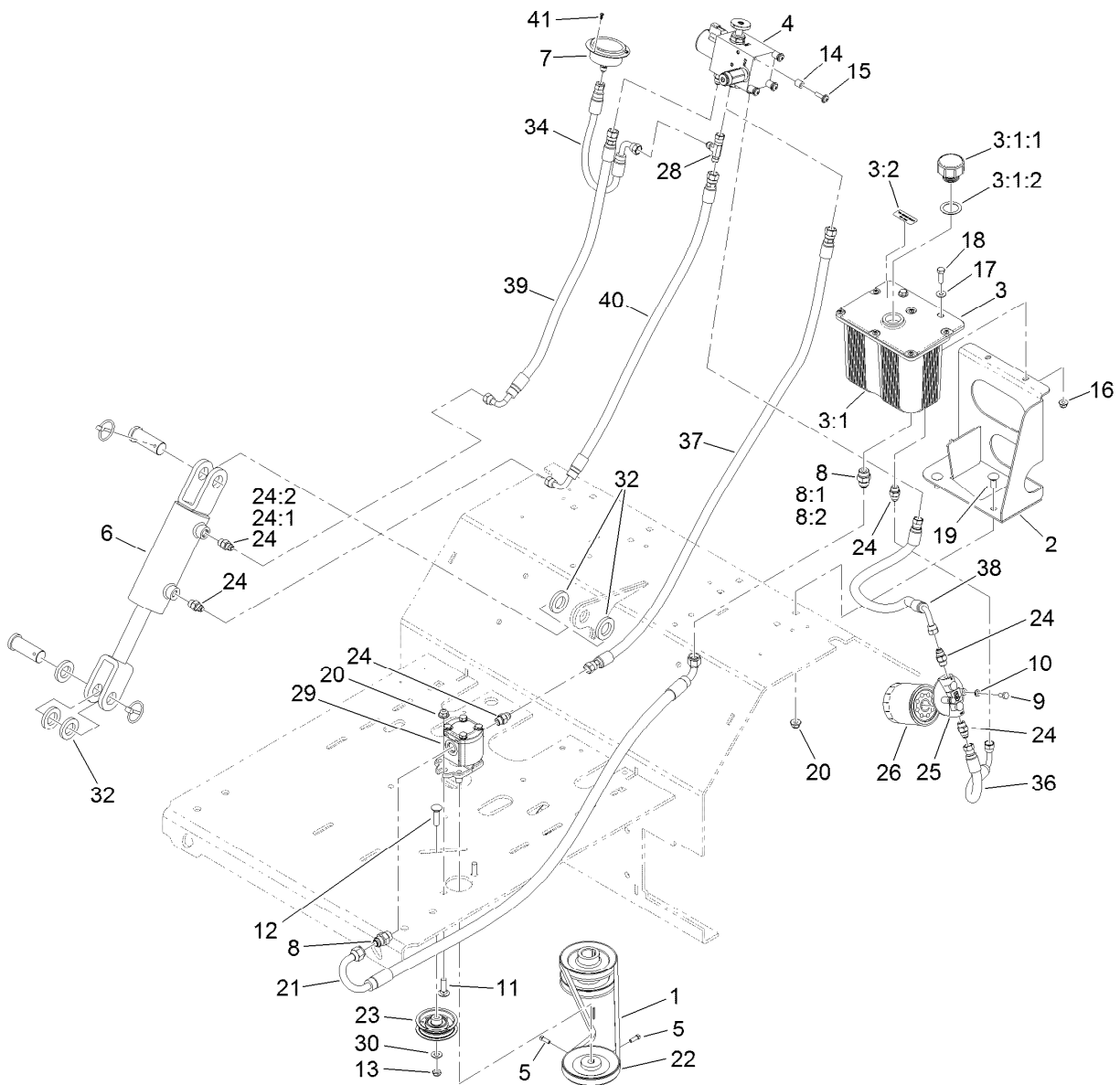
Motion Control Assembly

Ref.	Part Number	Qty.	Description	Ref.	Part Number	Qty.	Description
1	116-6567	1	RH Control Handle ASM	15	116-6576-03	1	Bracket-Pivot, RH
1:2	116-4279	2	Bearing-Flange	16	116-6577-03	1	Bracket-Pivot, LH
2	116-6566	1	LH Control Handle ASM	17	116-7224	4	Spacer
2:2	116-4279	2	Bearing-Flange	18	104-7201	4	Nut-HF
3	126-0340	3	Bellcrank W/Zerk	19	3256-2	4	Washer-Flat
5	116-6722	2	Link-Control, Hydro	20	321-14	4	Screw-HH
6	116-9298	2	Link-Control, Bell Crank	21	116-0027	2	Damper-Control, Motion
7	116-6730	2	Link-Control, Bell Crank	22	104-8300	4	Nut-Flange, NI
8	116-6608-03	1	Bar-Reference	23	104-8301	8	Nut-Flange, NI
9	116-6607	1	Shaft-Pivot, Control	24	323-6	4	Screw-HH
10	1-633131	2	Yoke-Linkage, Brake	25	3231-2	4	Bolt-CARR
11	103-2399	2	Pin-Spring, Clevis	26	103-8153	2	Grip-Lever, Control
13	3256-24	14	Washer-Flat	27	32112-14	2	Nut-Push
14	1-806003	10	Pin-Cotter, Hair				



Electrical Assembly

Ref.	Part Number	Qty.	Description	Ref.	Part Number	Qty.	Description
1	1-603511	1	Keys-Ignition (Spare Pair)	13	116-9383-03	1	Bracket-Battery
1	63-8360	1	Key-Ignition (W/Shield)	14	3231-2	2	Bolt-CARR
2	3230-2	2	Bolt-CARR	15	104-8301	2	Nut-Flange, NI
3	117-2221	1	Switch-Ignition	16	110-6765	1	Switch-Single Pole No
4	1-643275	2	Relay	17	116-9394-03	1	Guard-Harness
5	1-513374	1	Meter-Hour	18	92-6282	1	Switch-Seat
6	3234-5	2	Screw-HHF	19	3296-2	2	Nut-Lock, NI
8	117-6422	1	Cable-Battery, Black	20	3229-1	1	Bolt-CARR
9	109-7630	1	Positive Battery Cable ASM	21	3290-321	2	Screw-HWH
9:1	109-2407	1	Insulator-Battery	22	104-8300	4	Nut-Flange, NI
9:2	1-543393	1	Insulator-Solenoid	23	1-303287	5	Tie-Cable
10	104-2466	1	Holddown-Battery	24	32144-70	2	Screw-HWHTF
11	116-9382	1	Harness ASM	25	33114-016	1	Screw-HH
11:1	1-816001	2	Fuse-Blade Type, 20 Amp	26	33094-00	1	Washer-Plain
11:7	116-0053	1	Cap-Plug	27	104-7201	1	Nut-HF
12	116-7589	1	Mount-Switch	28	1-303335	5	Tie-Plastic

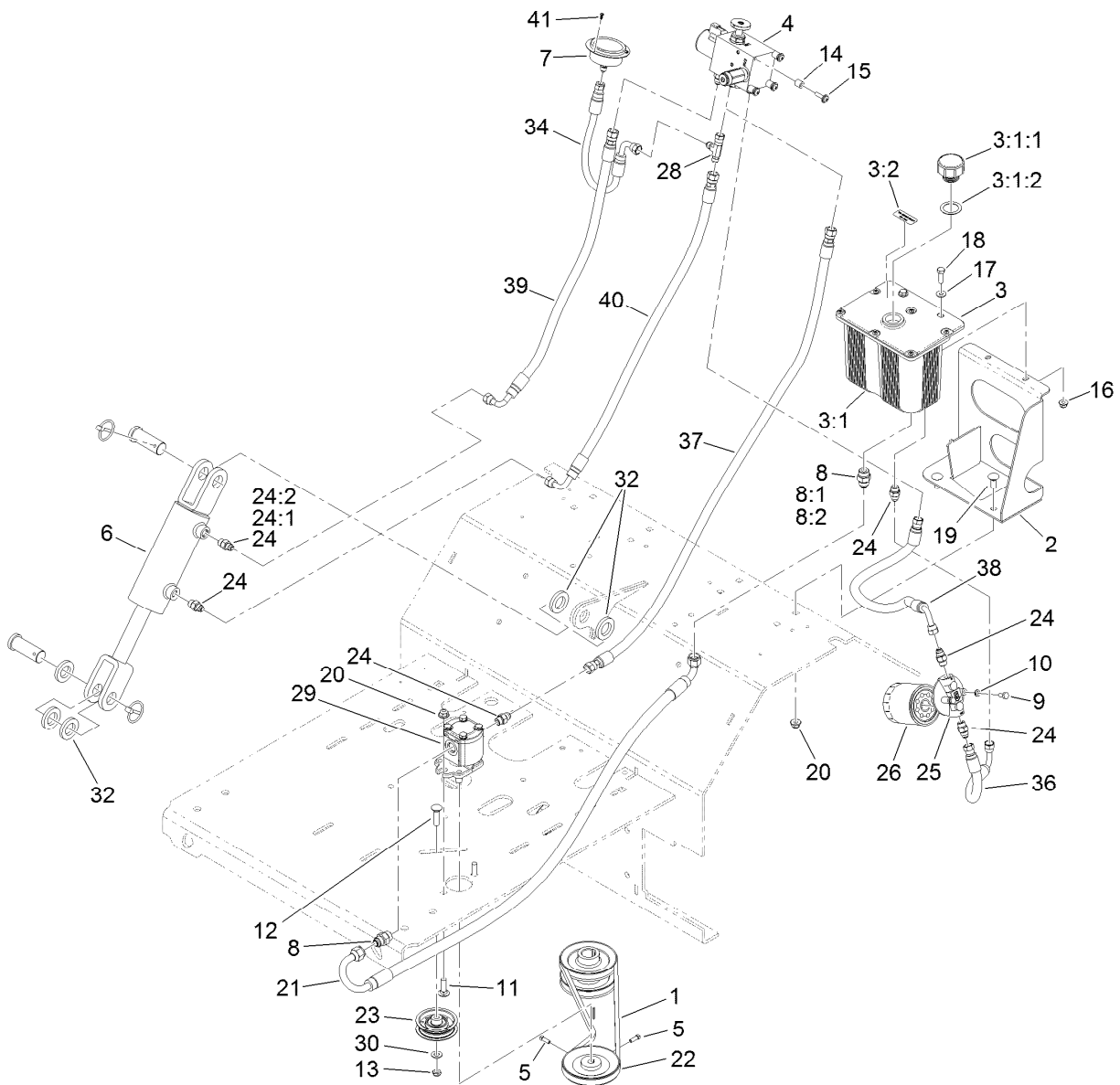


Auxiliary Hydraulic Assembly

Ref.	Part Number	Qty.	Description	Ref.	Part Number	Qty.	Description
1	116-8874	1	Belt-4L Section	13	3296-59	1	Nut-Lock, NI
2	116-6618-03	1	Bracket-Tank, Hydraulic	14	22-7810	4	Spacer
3	116-7557	1	Reservoir ASM	15	110-9361	4	Screw-PPH, Sems
3:1		1	Tank-Hydraulic ●	16	104-8300	2	Nut-Flange, NI
3:1:1	103-1948	1	Cap-Reservoir, HYD	17	3256-2	2	Washer-Flat
3:1:2	103-1949	1	Gasket-Cap	18	322-5	2	Screw-HH
3:2	93-6686	1	Decal-Oil, HYD	19	3231-2	4	Bolt-CARR
4	116-9549	1	Valve-Manifold	20	104-8301	6	Nut-Flange, NI
5	3241-6	2	Screw-SQH ■	21	116-9309	1	Hose-Hydraulic
6	116-6969	1	HYD Cylinder ASM	22	116-6667	1	Pulley
7	116-8178	1	Gauge-Pressure	23	116-6760	1	Pulley-Idler, Flat
8	1-603990	2	Fitting-Straight	24	103-2156	6	Fitting-Straight
8:1	1-603920	1	O-Ring	24:1	1-603921	1	O-Ring
8:2	1-603992	1	O-Ring	24:2	103-1020	1	O-Ring
9	321-3	2	Screw-HH	25	104-7836	1	Head-Filter
10	1-805004	2	Washer-Lock	26	1-633750	1	Filter-Oil, HYD
11	3231-25	2	Bolt-CARR	28	353-877	1	Fitting-HYD, Tee (Swivel)
12	3231-4	1	Screw-CARR	29	116-9129	1	Hydraulic Pump ASM

● Not serviced separately

■ Use Pro-Lock, Nut Type (P/N 1-840022, .5ml tube) on threads.

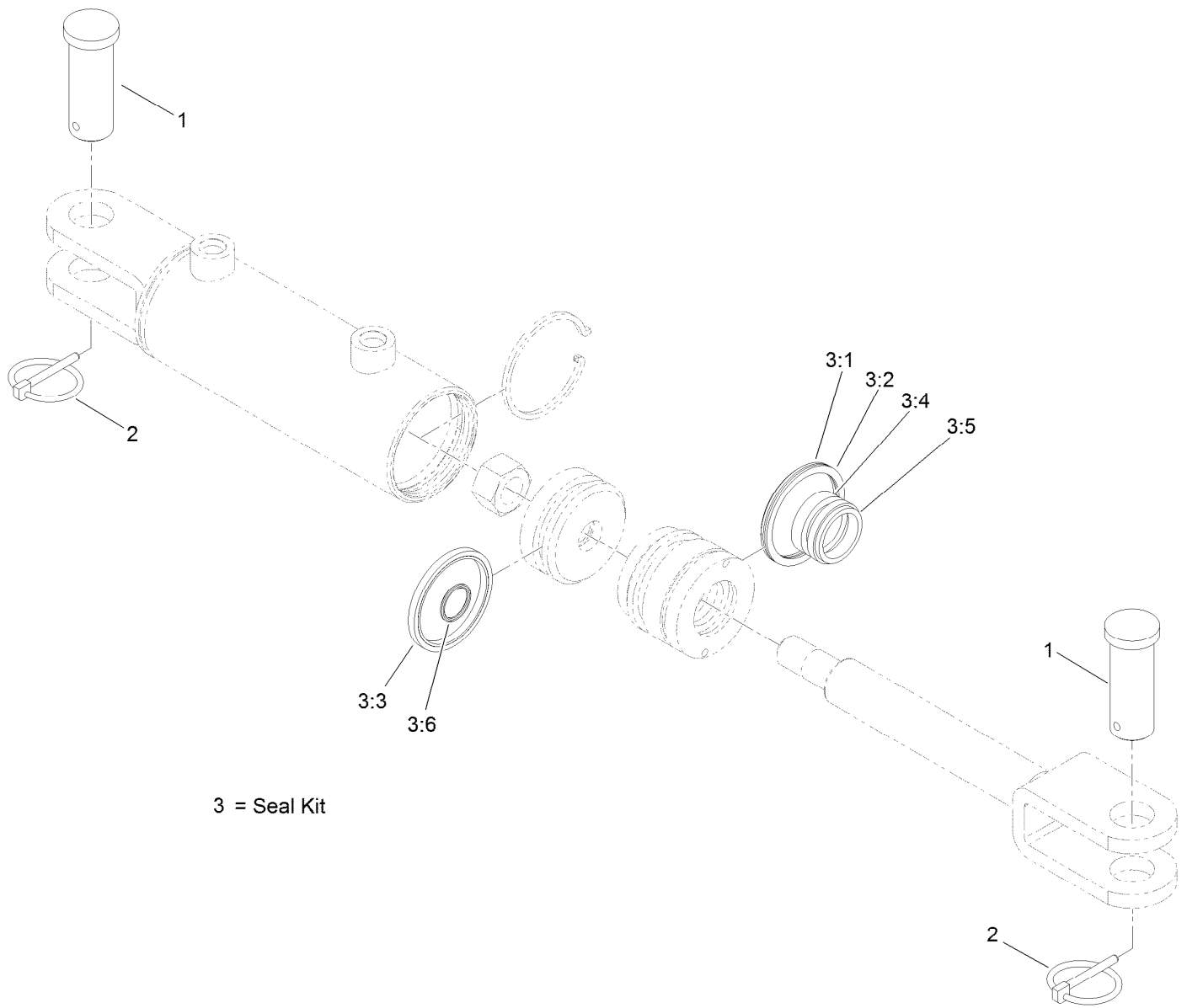


Auxiliary Hydraulic Assembly (continued)

Ref.	Part Number	Qty.	Description	Ref.	Part Number	Qty.	Description
30	3256-24	1	Washer-Flat	38	116-9308	1	Hose-Hydraulic
32	116-6781	5	Spacer	39	116-6677	1	Hose-Hydraulic
34	116-8180	1	Hose-Hydraulic, Hp	40	116-6678	1	Hose-Hydraulic, Hp
36	116-6675	1	Hose-Hydraulic, LP	41	363-8552	3	Screw-TAP
37	116-8151	1	Hose-Hydraulic				

● Not serviced separately

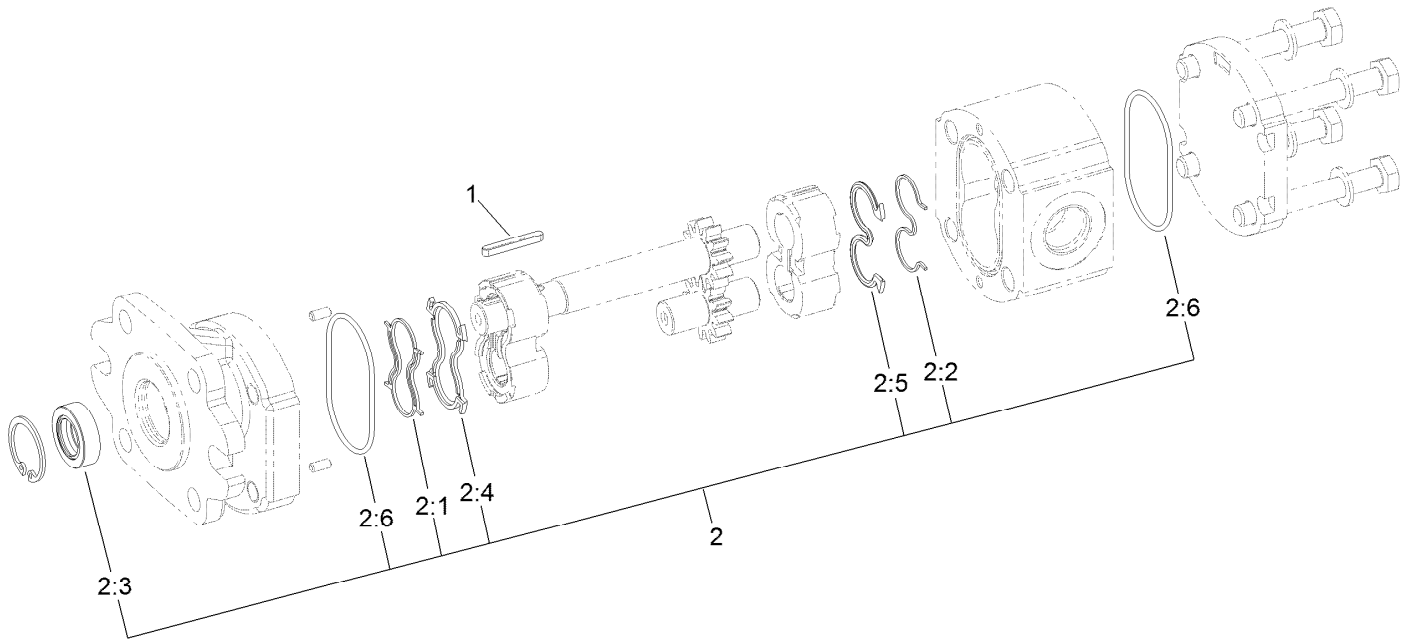
■ Use Pro-Lock, Nut Type (P/N 1-840022, .5ml tube) on threads.



Hydraulic Cylinder Assembly No. 116-6969

Ref.	Part Number	Qty.	Description
1	116-7290	2	Pin-Clevis
2	92-1298	2	Pin-Lynch
3	127-3234	1	Seal Kit
3:1		1	O-Ring ●
3:2		1	Backup Ring ●
3:3		1	Psp Seal ●
3:4		1	Bs Seal ●
3:5		1	Dust Seal ●
3:6		1	O-Ring ●

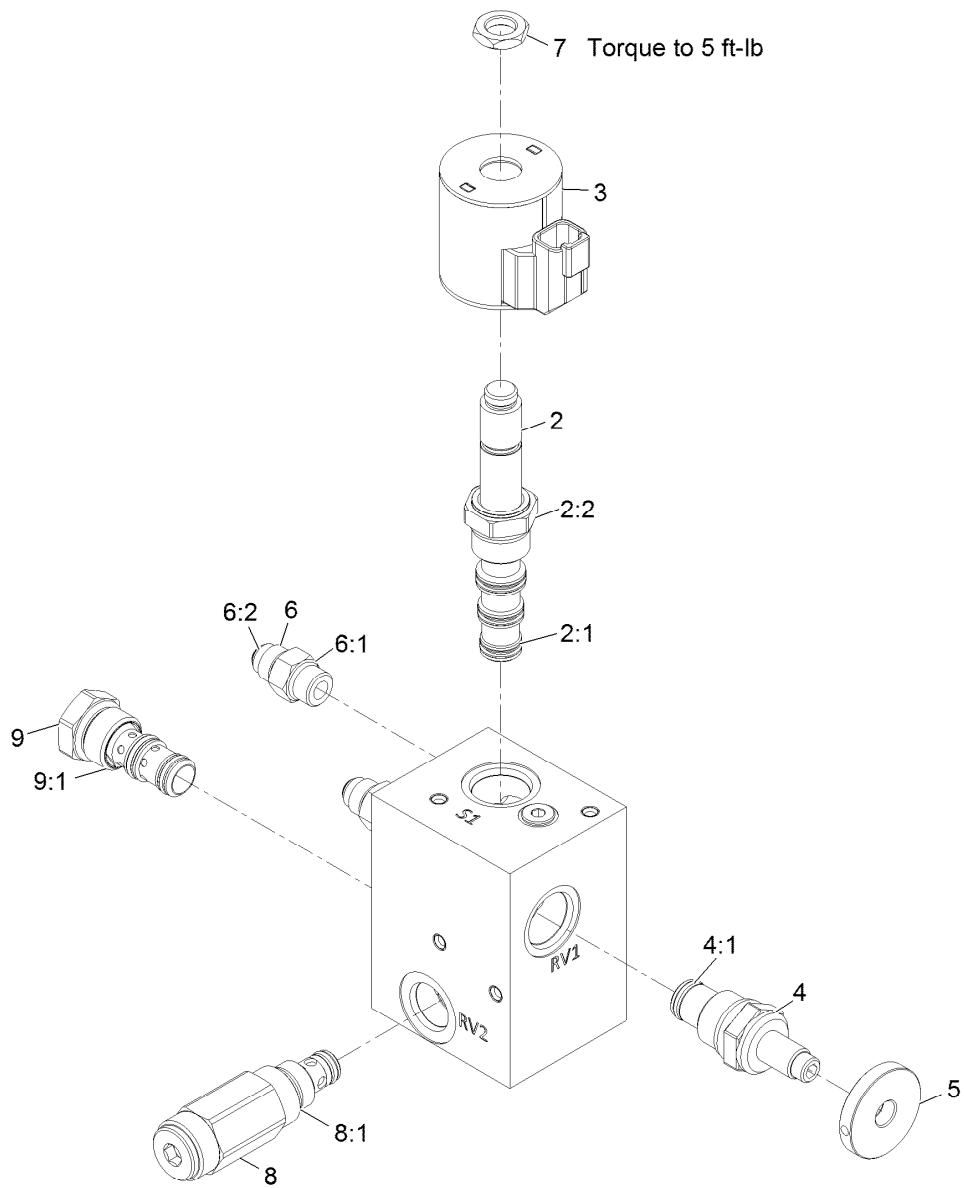
● Not serviced separately



Hydraulic Pump Assembly No. 116-9129

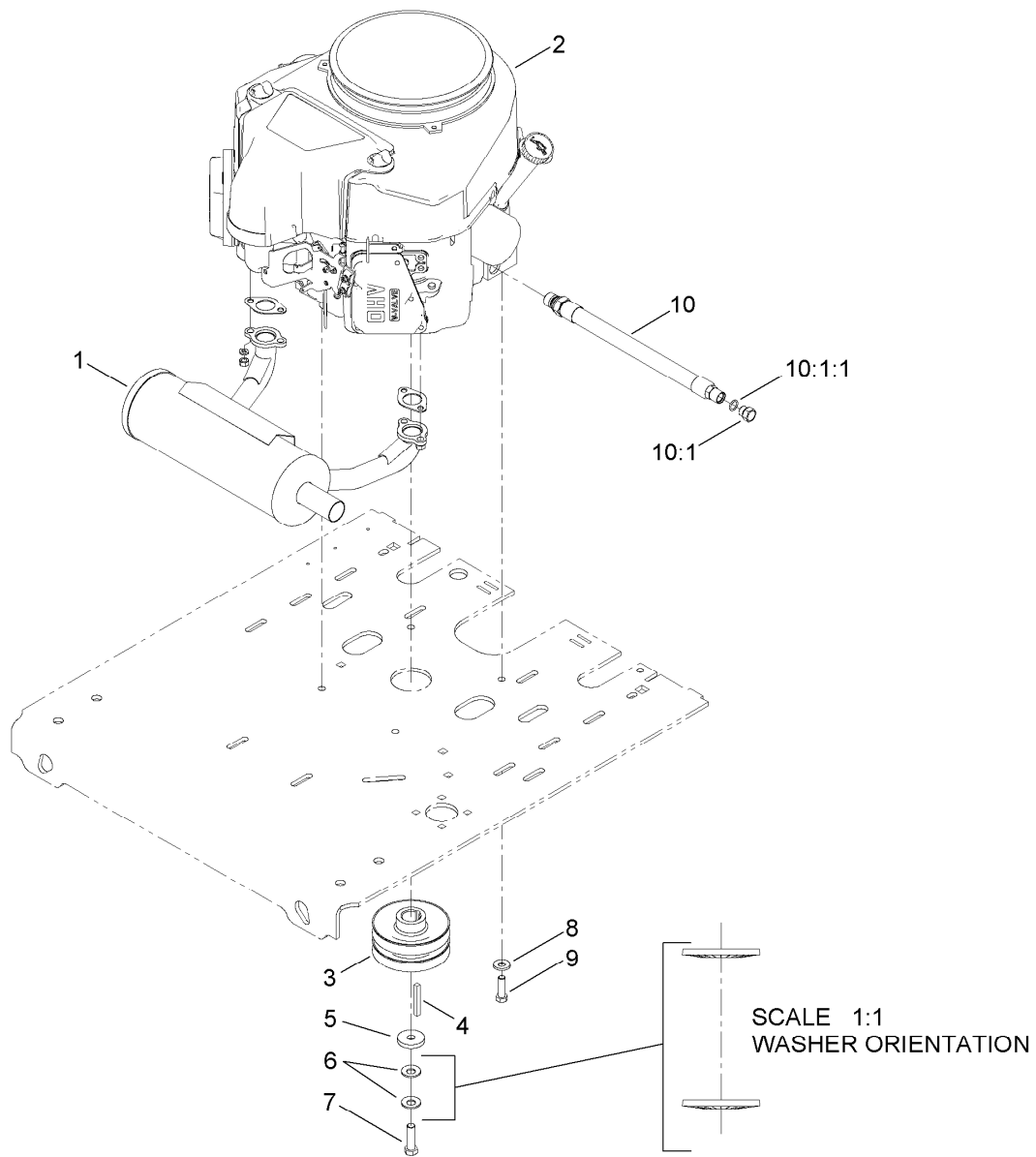
<i>Ref.</i>	<i>Part Number</i>	<i>Qty.</i>	<i>Description</i>
1	115-7855	1	Key-Square
2	112-0199	1	Seal Kit
2:1		1	Seal-Anti Extrusion ●
2:2		1	Seal-Anti Extrusion ●
2:3		1	Seal-Shaft ●
2:4		1	Seal-Upper ●
2:5		1	Seal ●
2:6		1	O-Ring ●

● Not serviced separately



Manifold W/Check and Relief Valve Assembly No. 116-9549

Ref.	Part Number	Qty.	Description
2	110-8906	1	Valve-Solenoid
2:1	110-8908	1	Spool Valve Seal Kit
2:2	110-2634	1	Nut-Coil
3	119-4619	1	Coil-Solenoid
4	116-9397	1	Valve-Relief, Poppet Style
4:1	116-9398	1	O-Ring
5	116-9396	1	Knob (1.5 Dia)
6	103-2156	4	Fitting-Straight
6:1	1-603921	1	O-Ring
6:2	103-1020	1	O-Ring
7	110-2634	1	Nut-Coil
8	116-9716	1	Valve-Relief
8:1	116-9717	1	O-Ring
9	116-9718	1	Valve-Check, P O
9:1	116-9719	1	O-Ring



Engine Assembly

Ref.	Part Number	Qty.	Description
1	116-3735	1	Muffler-Horizontal
2		1	Engine-Kawasaki, Fs481V_s25-R ●■
3	116-9709	1	Pulley
4	103-4177	1	Key
5	1-543610	1	Washer-Clutch
6	1-603610	2	Washer-Spring
7	109-9761	1	Band, Brake ◆
8	98-5975	4	Washer-Belleville
9	323-7	4	Screw-HH
10	116-4924	1	Engine Oil Drain Hose ASM ▲
10:1	353-508	1	Plug-HH
10:1:1	237-42	1	O-Ring

● Not serviced separately

▲ Use a Teflon Pipe Sealant or equivalent on threads.

◆ Use Pro-Lock, Nut Type (P/N 1-840022, .5ml tube) on threads.

■ Obtain parts from www.kawpowerepc.com

Notes:



Count on it.