



Caster Wheel Update Kit

74141/74143/74145/74953 Z Master® Riding Mower

Model No. 127-0301

Model No. 127-0302

Installation Instructions

Safety

Safety and Instructional Decals



Safety decals and instructions are easily visible to the operator and are located near any area of potential danger. Replace any decal that is damaged or lost.

**THIS MACHINE HAS BEEN
UPDATED WITH KIT 127-0301.**

127-0303

127-0303

**THIS MACHINE HAS BEEN
UPDATED WITH KIT 127-0302.**

127-0304

127-0304

Installation

Loose Parts

Use the chart below to verify that all parts have been shipped.

Procedure	Description	Qty.	Use
1	Deck lift spacer (front) Deck lift spacer (back)	2 2	Install the deck lift spacer.
2	No parts required	—	Remove the original caster wheel assembly.
3	Grease seal Caster wheel assembly Locknut (3/4 inch)	2 2 2	Install the new caster wheel assembly.
4	Decal	1	Install the decal.

Set the parking brake, stop the engine, remove the key, and wait for all moving parts to stop before leaving the operating position.



1

Installing the Deck Lift Spacer

Parts needed for this procedure:

2	Deck lift spacer (front)
2	Deck lift spacer (back)

Procedure

Important: Deck lift spacers are not used for model 74953.

1. Disconnect the deck from the machine; refer to the *Operator's Manual*.
2. Remove the carriage bolts (1/2 x 2-1/2 inches), the cross shaft support bearing, and the flange nuts (3/8 inch) from the front right of the frame ([Figure 1](#)).

Note: The bearing liner may stay intact on the cross shaft.

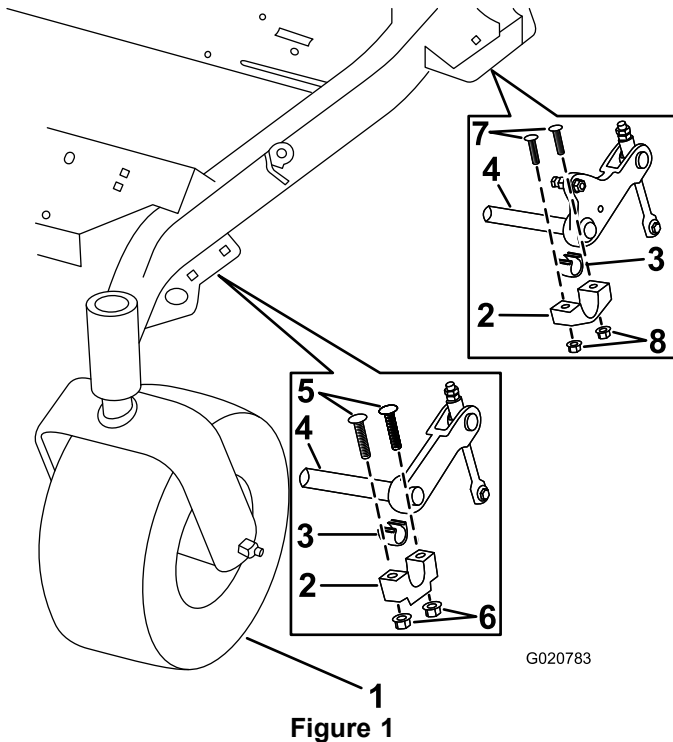


Figure 1

- | | |
|--------------------------------|---------------------------------------|
| 1. Caster wheel assembly | 5. Carriage bolt (1/2 x 2-1/2 inches) |
| 2. Cross shaft support bearing | 6. Flange nut (3/8 inch) |
| 3. Bearing liner | 7. Carriage bolt (3/8 x 1-3/4 inches) |
| 4. Cross shaft | 8. Locknut (1/2 inch) |

3. Align a deck lift spacer with the holes on the front right of the frame ([Figure 2](#))

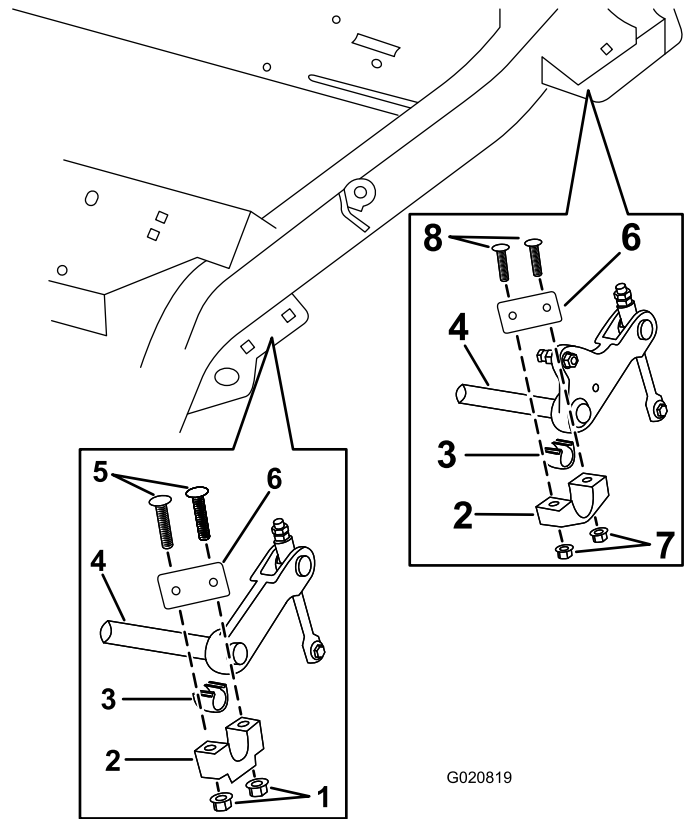


Figure 2

- | | |
|--------------------------------|---------------------------------------|
| 1. Flange nut (3/8 inch) | 5. Carriage bolt (1/2 x 2-1/2 inches) |
| 2. Cross shaft support bearing | 6. Deck lift spacer |
| 3. Bearing liner | 7. Locknut (1/2 inch) |
| 4. Cross shaft | 8. Carriage bolt (3/8 x 1-3/4 inches) |

4. Install the deck lift spacer by using the carriage bolts (1/2 x 2-1/2 inches), the bearing liner, the cross shaft support bearing, and the flange nuts (3/8 inch) as shown in [Figure 2](#).
5. Repeat steps 2 through 4 for the front left caster wheel assembly.
6. Remove the carriage bolts (3/8 x 1-3/4 inches), the cross shaft support bearing, and the locknuts (1/2 inch) from the back right of the frame ([Figure 1](#)).

Note: The bearing liner may stay intact on the cross shaft.

7. Align a deck lift spacer with the holes on the back right of the frame ([Figure 2](#)).
8. Install the deck lift spacer by using the carriage bolts (3/8 x 1-3/4 inches), the bearing liner, the cross shaft support bearing, and the locknuts (1/2 inch) as shown in [Figure 2](#).
9. Repeat steps 6 through 8 for the back left of the frame.

2

Removing the Original Caster Wheel Assembly

No Parts Required

Procedure

Remove the grease cap, locknut (3/4 inch), and the caster wheel assembly from the machine (Figure 3).

Important: The grease seal may stay intact and may not need to be replaced.

Note: The 3 washers and the 2 bearing taper roller cones may stay intact in the frame.

Note: Retain the grease cap.

Note: Discard the caster wheel assembly and the locknut (3/4 inch).

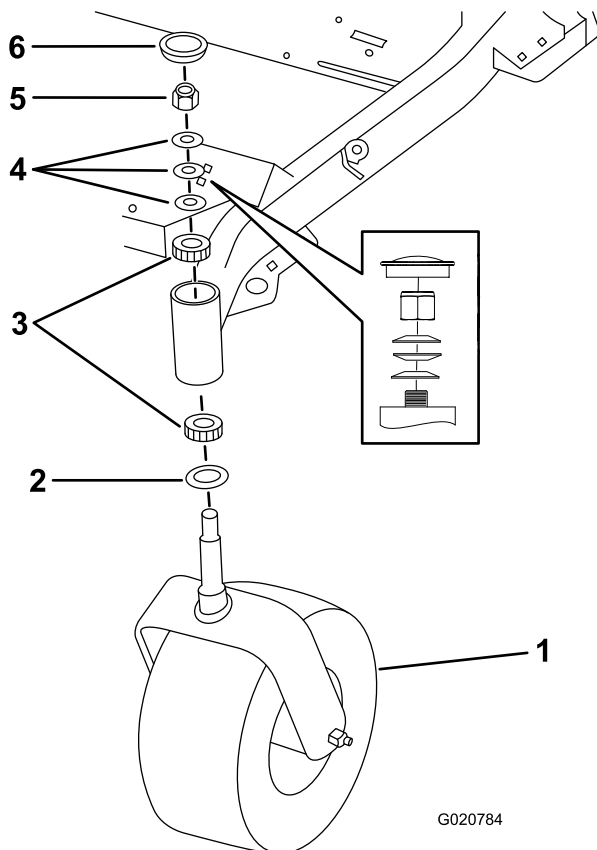


Figure 3

- | | | |
|--------------------------|------------------------------|-----------------------|
| 1. Caster wheel assembly | 3. Bearing taper roller cone | 5. Locknut (3/4 inch) |
| 2. Grease seal | 4. Washer | 6. Grease cap |

3

Installing the New Caster Wheel Assembly

Parts needed for this procedure:

2	Grease seal
2	Caster wheel assembly
2	Locknut (3/4 inch)

Procedure

Important: The grease seal may stay intact and may not need to be replaced.

1. Insert the grease seal into the frame (Figure 4).

Important: If the grease seal has been damaged, replace with the new grease seal.

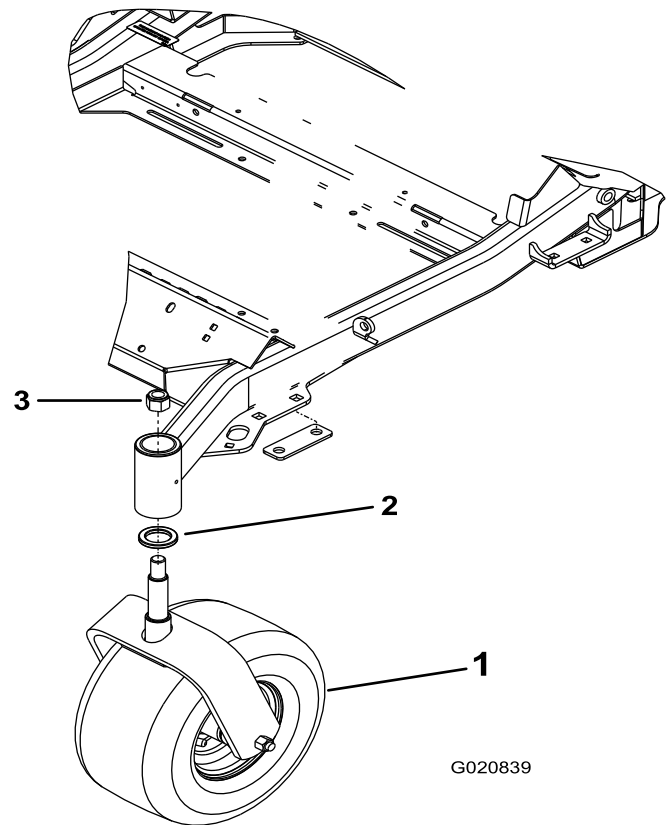


Figure 4

- | | |
|--------------------------|-----------------------|
| 1. Caster wheel assembly | 3. Locknut (3/4 inch) |
| 2. Grease seal | |

2. Assemble the caster wheel assembly into the frame and install the locknut (3/4 inch) as shown in Figure 4.

3. Tighten the locknut until the spring washers are flat and then back off a 1/4 turn to properly set the pre-load on the bearings (Figure 3).

Important: Make sure the spring washers are installed correctly as shown in Figure 2.

4

Installing the Decal

Parts needed for this procedure:

1	Decal
---	-------

Procedure

Install the decal onto the machine (Figure 5).

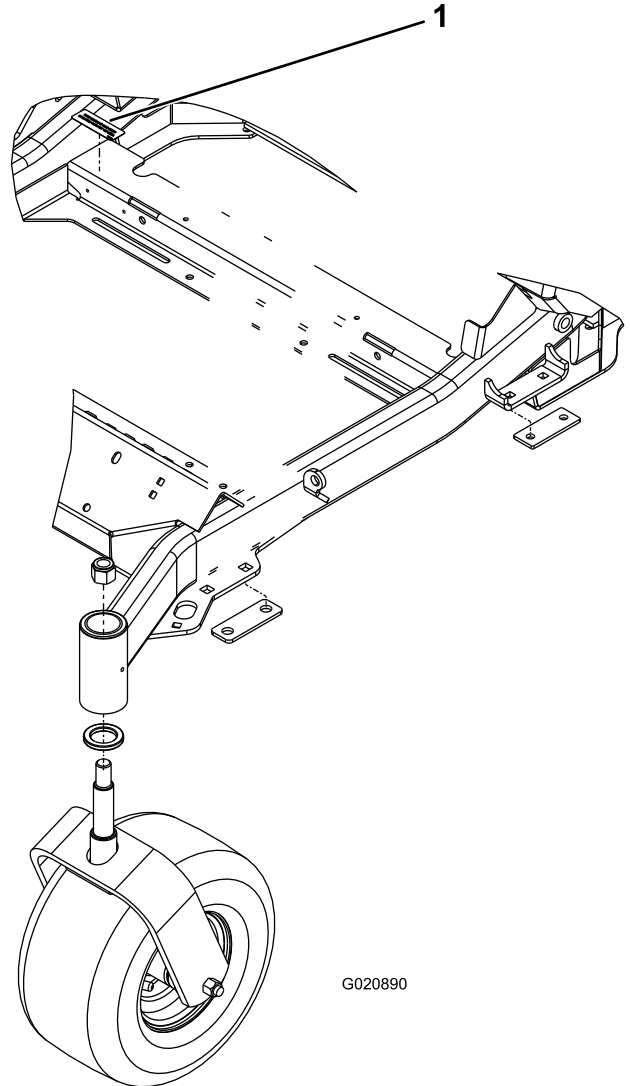


Figure 5

1. Decal