



Count on it.

Parts Catalog

18in Dethatcher

Model No. 23513—Serial No. 313000001 and Up

Model No. 33513—Serial No. 313000001 and Up



Ordering Replacement Parts

To order replacement parts, please supply the part number, the quantity, and the description of each part desired.

Understanding Reference Numbers

Each identified part in an illustration has a reference number. The reference number for a part also appears in the parts list, along with other information about the part.

This catalog uses two special reference number formats, one to indicate parts in a service assembly and another to indicate the quantity of a given part in an illustration.

Service Assembly Reference Numbers

Parts in service assemblies have reference numbers in the form a:b. The a represents the reference number of the entire service assembly and the b represents a sequential number unique to each part within the service assembly.

For example, a wheel assembly might be identified by reference number 6, the tire by 6:1, the valve by 6:2, and the wheel by 6:3. When you order the assembly identified by reference number 6, you receive all parts identified by reference numbers 6:1, 6:2, and 6:3. However, you may also order any part individually. Reference numbers of this type appear in illustration and in parts lists.

Reference Numbers Indicating Quantity

In an illustration, if a reference number indicates more than one part, the reference number has the form nX y. The n represents the quantity of the part, the X is the multiplication symbol, and the y represents the reference number.

For example, in an illustration, the reference number 2X 37 means that two of the parts identified by reference number 37 are indicated.

List of Abbreviations

AR: as required

ASM: assembly

BBC: blade brake control

BHTF: button head thread forming

CARR: carriage

CCW: counter clockwise

CW: clockwise

DEG: degrees

DPA: Dual Point Adjustment

ECM: electronic control module

EXT: external

FH: flat head

GA: gauge

HD: heavy-duty

HF: hex flange

HH: hex head

HHF: hex head flange

HHFTF: hex head flange thread forming

HJ: hex jam

HLH: hex lag head

HOC: height-of-cut

HSBH: hex socket button head

HSFH: hex socket flat head

HSH: hex socket head

HWH: hex washer head

HWHTF: hex washer head thread forming

HYD: hydraulic

LH: left hand

LP: Liquefied Petroleum Gas

LPG: Liquefied Petroleum Gas

NI: nylon insert

NPTF: national pipe thread fine

PFH: phillips flat head

PPH: phillips pan head

PPHTF: phillips pan head thread forming

PRH: phillips round head

PTH: phillips truss head

PTO: power-take-off

RH: right hand

ROPS: roll-over protection system

RRB: rear roller brush

SFH: slotted fillister head

SHH: slotted hex head

SHWH: slotted hex washer head

SPH: slotted pan head

SQH: square head

SRH: slotted round head

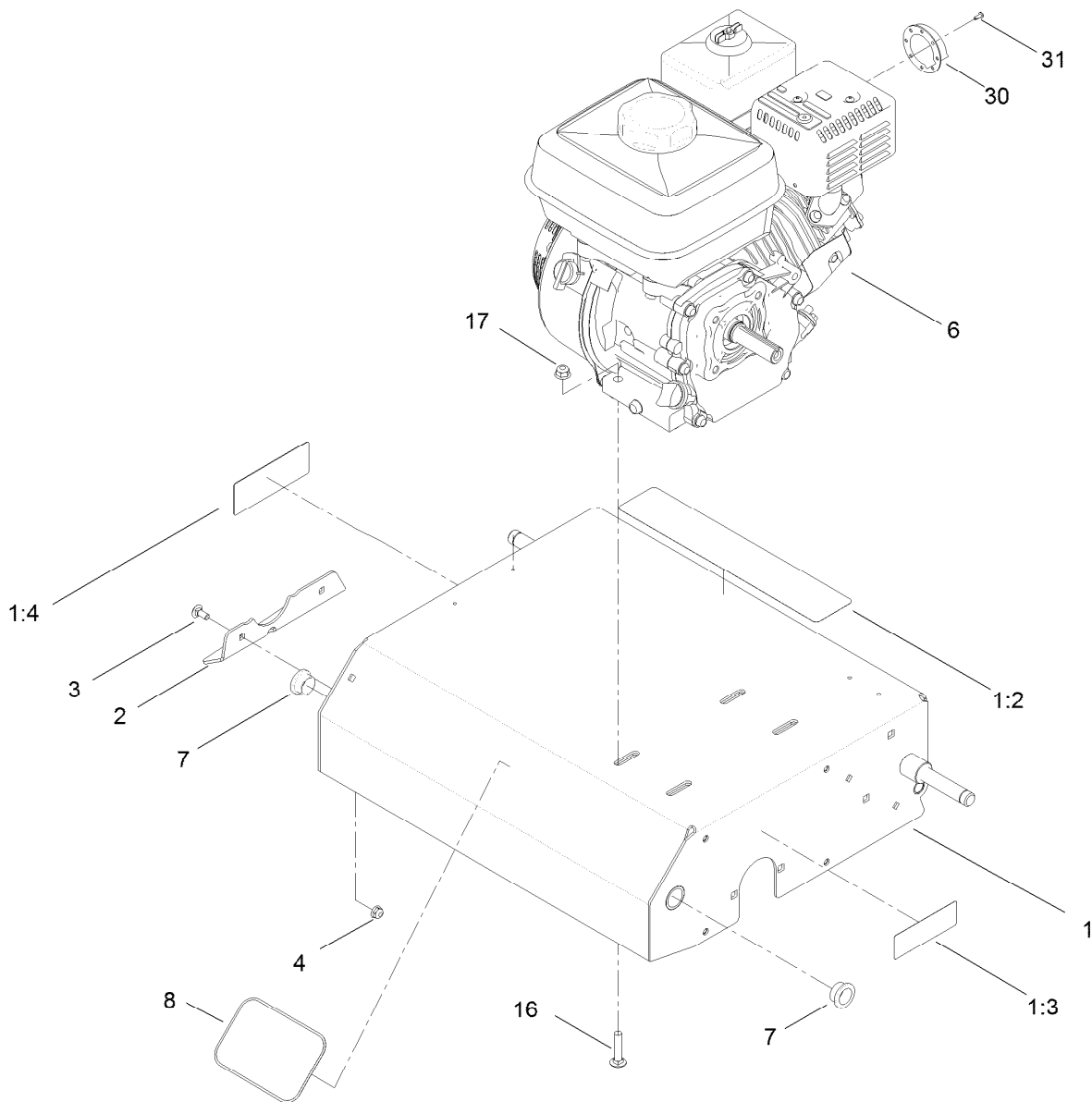
STD: standard

TAP: self tapping

TTH: torx truss head

Contents

- Frame and Engine Assembly 4
- Handle Assembly 5
- Bearing and Shaft Assembly 6
- Lever Arm Assembly 7
- Clutch, Baffle and Belt Guard Assembly 8

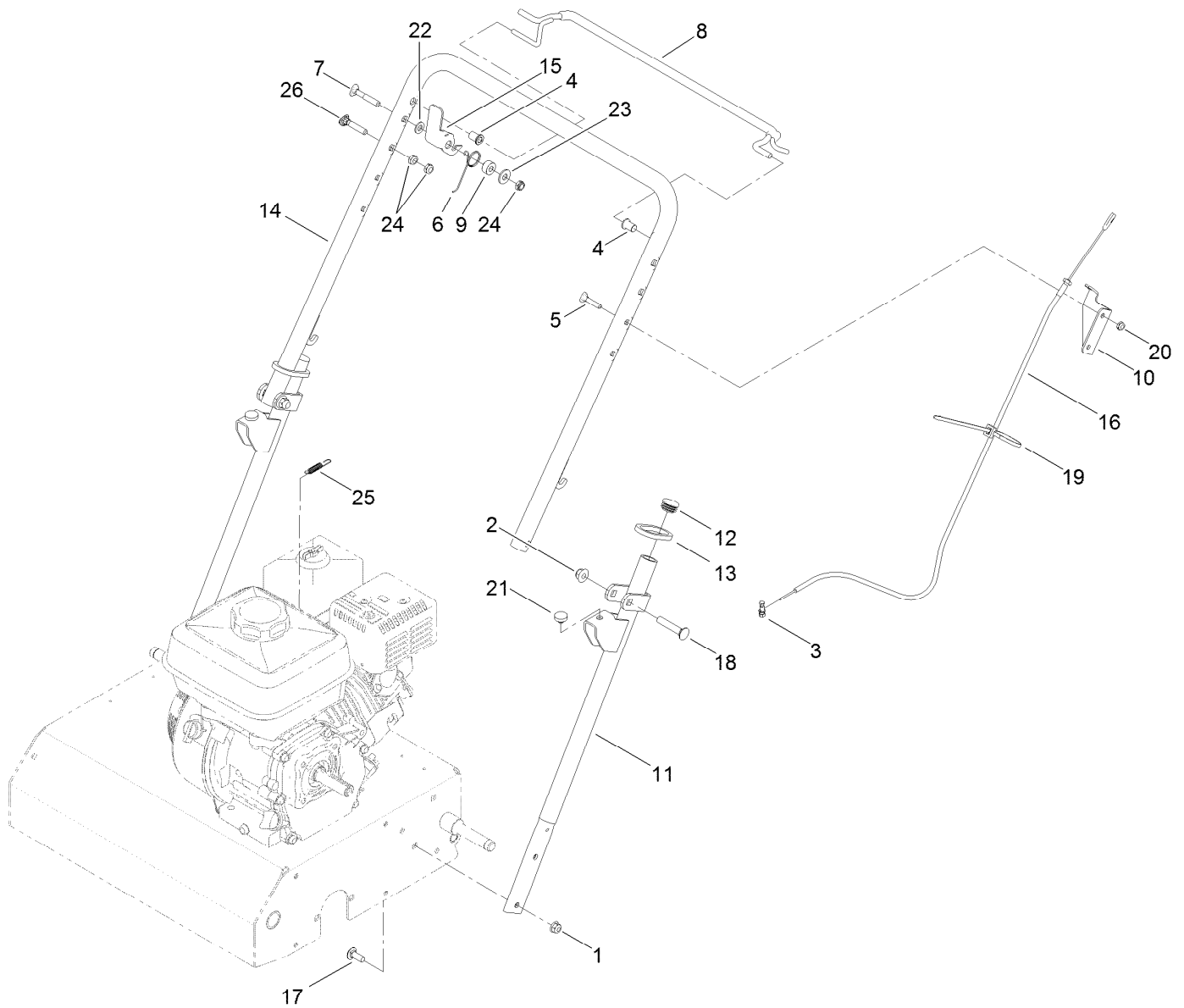


Frame and Engine Assembly

Ref.	Part Number	Qty.	Description
1	125-3825	1	Frame ASM
1:2	125-3809	1	Decal-Warning
1:3	117-4979	1	Decal-Warning, Shields
1:4	93-7321	1	Decal-Danger
2	121-1853-01	1	Guard-Hand
3	3229-11	2	Screw-CARR
4	104-7201	2	Nut-HF
6		1	Engine-Honda, Gx160Ut1Qxz ● ■
7	121-1876	2	Bushing
8	67-1300	1	Decal
16	3230-4	4	Screw-CARR
17	104-8300	4	Nut-Flange, NI
30	125-3866	1	Deflector-Honda
31	120-1884	2	Screw-PPHTF

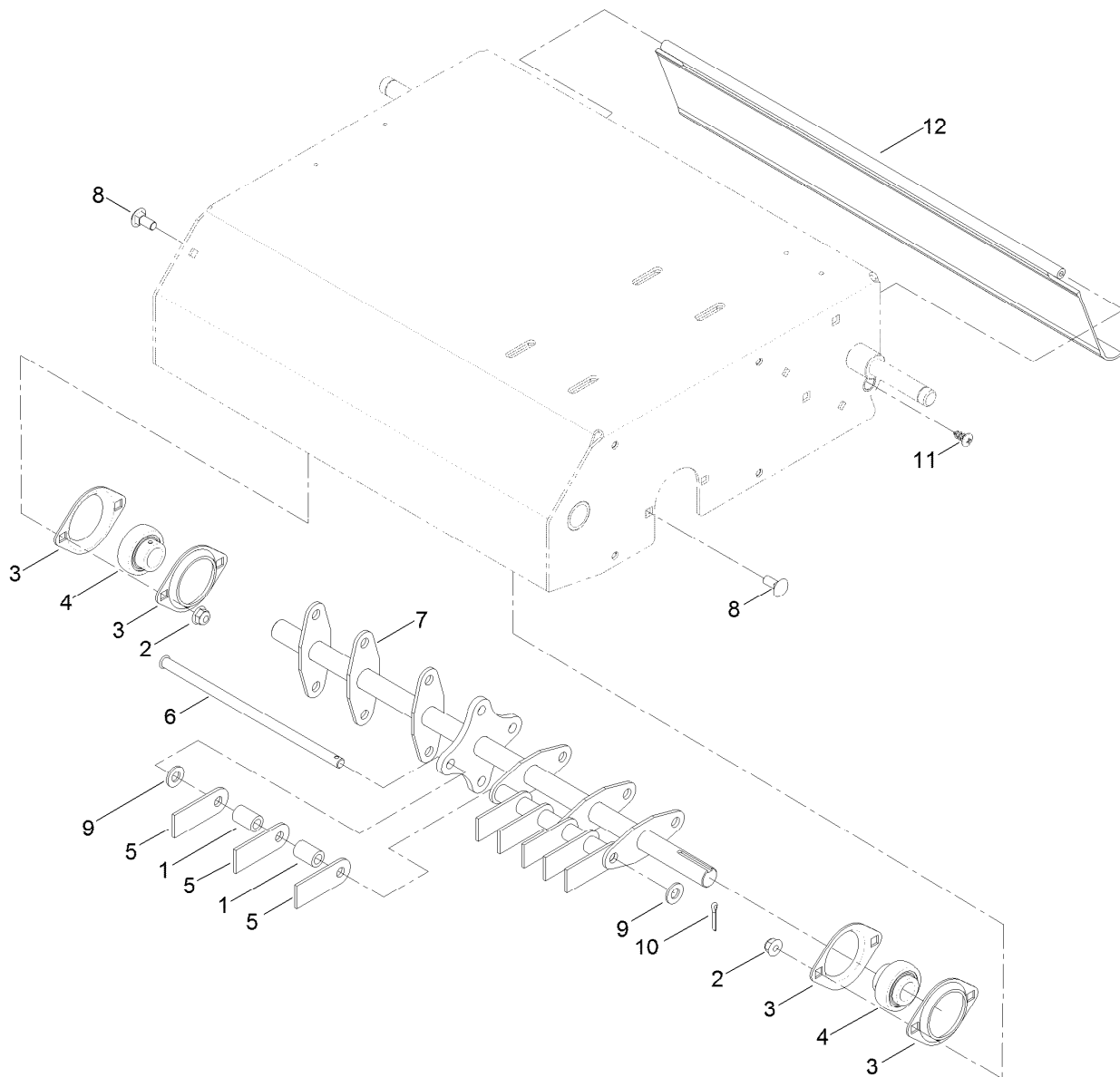
● Not serviced separately

■ Obtain parts from www.honda-engines.com



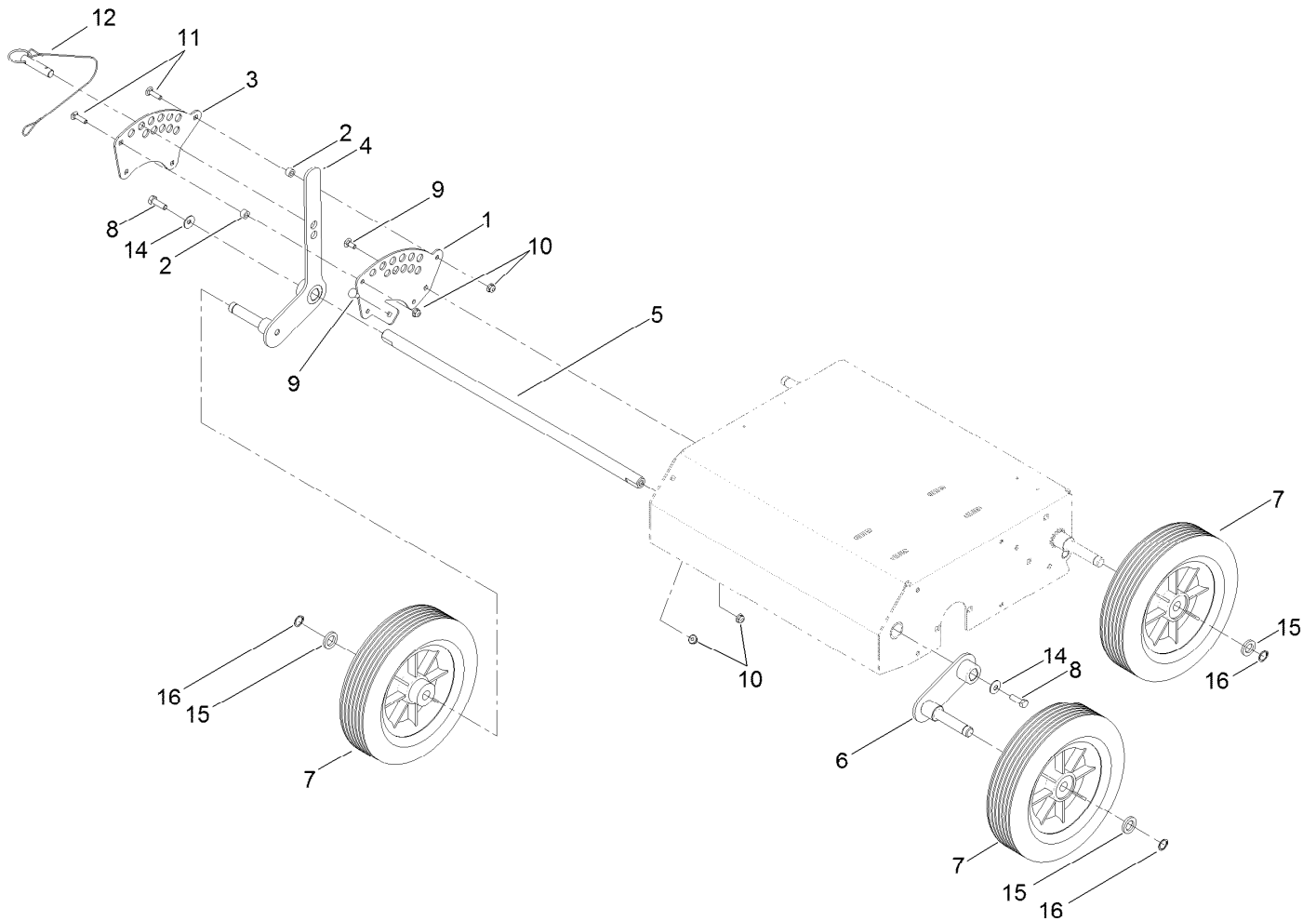
Handle Assembly

Ref.	Part Number	Qty.	Description	Ref.	Part Number	Qty.	Description
1	104-8300	4	Nut-Flange, NI	14	125-3800-03	1	Handle-Upper
2	104-8301	2	Nut-Flange, NI	15	121-7727	1	Tab-Lock
3	108-5928	1	Swivel-Stop, Cable	16	121-7739	1	Cable-Throttle
4	109-2713	2	Bushing	17	3230-10	4	Screw-CARR
5	109-8144	2	Bolt-Handle	18	3231-6	2	Screw-CARR
6	125-3750	1	Spring, Lock-Tab	19	3290-378	1	Tie-Cable
7	112-8876	1	Screw-Handle	20	3296-56	2	Nut-Lock, NI
8	116-0389	1	Traction Bail With Grip ASM	21	1-513658	2	Bumper
9	116-2690	1	Bushing-Stepped	22	3256-23	1	Washer-Flat
10	121-1859-03	1	Bracket-Throttle,Cable	23	3256-3	1	Washer-Flat
11	125-3799-03	2	Handle-Lower	24	3296-47	3	Nut-Lock, NI
12	121-4870	2	Plug	25	119-4609	1	Spring-Extension
13	121-6202	2	Ring-Handle Lock	26	107-3018	1	Screw-Handle



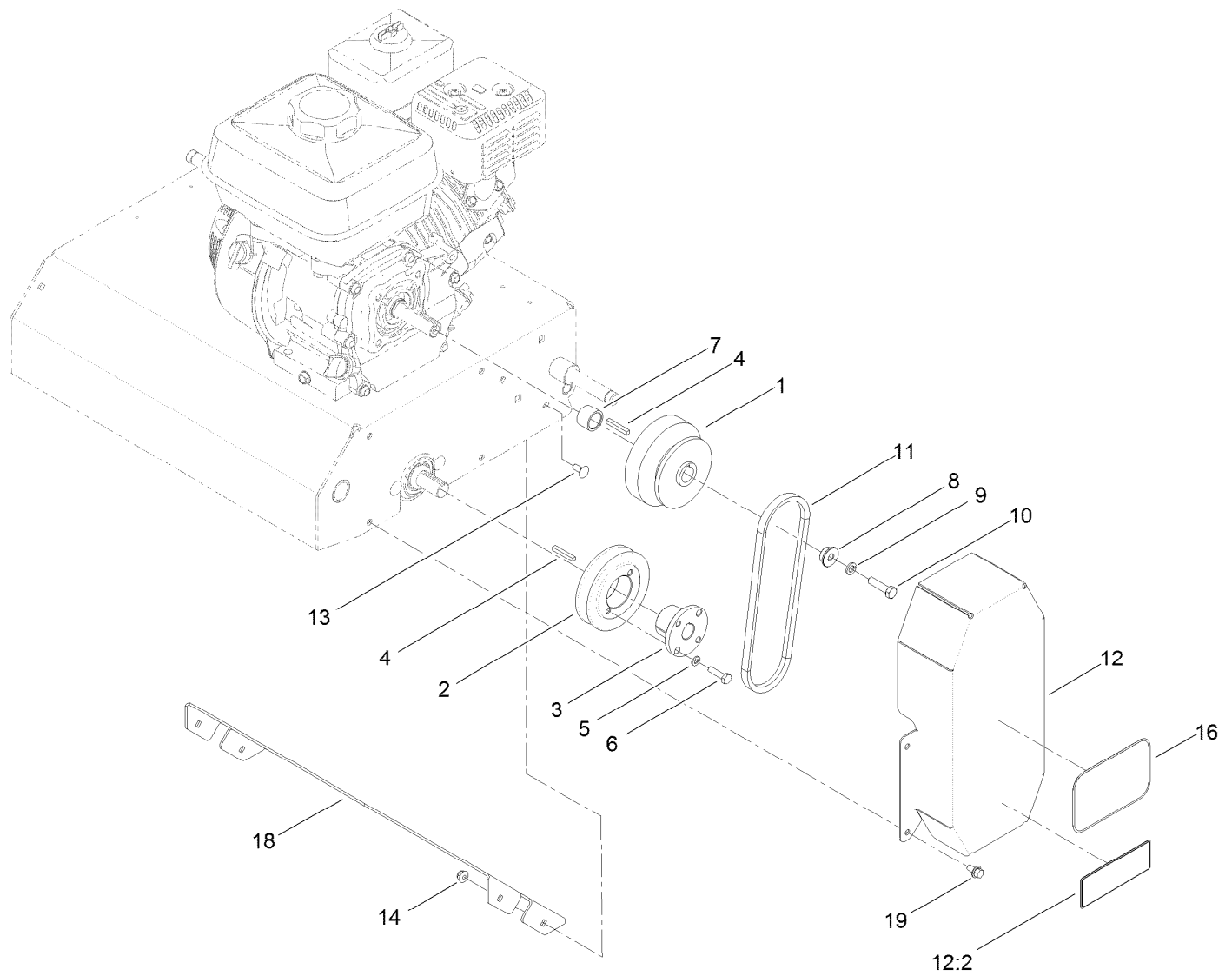
Bearing and Shaft Assembly

<i>Ref.</i>	<i>Part Number</i>	<i>Qty.</i>	<i>Description</i>
1	125-3870	28	Spacer
2	104-8300	4	Nut-Flange, NI
3	105-9714	4	Flange-Bearing
4	106-8448	2	Bearing-Race, Extended
5	121-1869	32	Blade-Flail
6	121-6208	4	Shaft-Satellite
7	121-6220-03	1	Shaft-Rake
8	3230-1	4	Bolt-CARR
9	3256-24	8	Washer-Flat
10	3272-10	4	Pin-Cotter
11	117-1092	2	Screw-PTH
12	120-6241	1	Shield-Trailing



Lever Arm Assembly

Ref.	Part Number	Qty.	Description
1	121-1854	1	Bracket
2	98-4799	4	Tube-Spacer
3	121-1856	1	Plate
4	125-3805-03	1	Lever-HOC
5	125-3806	1	Shaft-Pivot
6	125-3804-03	1	Arm
7	121-4897	4	Wheel-Transport
8	322-5	2	Screw-HH
9	3229-11	2	Screw-CARR
10	104-7201	6	Nut-HF
11	3229-2	4	Screw-CARR
12	104-3678	1	Pin-Hitch
14	3290-456	2	Washer-Belleville
15	63-9710	4	Spacer-Bearing
16	32120-64	4	Ring-Snap, External



Clutch, Baffle and Belt Guard Assembly

Ref.	Part Number	Qty.	Description
1	120-1215	1	Clutch-Centrifugal
2	121-2019	1	Sheave-Taper Lock
3	121-2022	1	Bushing-Taper Lock
4	92-2649	2	Key-Square
5	3253-3	2	Washer-Lock
6	321-6	2	Screw-HH
7	121-7731	1	Spacer
8	121-7732	1	Bushing
9	3253-4	1	Washer-Lock

Ref.	Part Number	Qty.	Description
10	3210-7	1	Screw-HH
11	53-4650	1	V-Belt, Blower
12	125-3827	1	Belt Guard ASM
12:2	93-7321	1	Decal-Danger
13	3229-11	4	Screw-CARR
14	104-7201	4	Nut-HF
15	93-7321	1	Decal-Danger
18	121-6235-01	1	Baffle-Deflector
19	3234-13	4	Screw-HHF

Notes:

Notes:

Notes:



Count on it.