



**Count on it.**

**Parts Catalog**

**ProStripe 560 Mower**

Model No. 02656—Serial No. 313000001 and Up



# Ordering Replacement Parts

To order replacement parts, please supply the part number, the quantity, and the description of each part desired.

## Understanding Reference Numbers

Each identified part in an illustration has a reference number. The reference number for a part also appears in the parts list, along with other information about the part.

This catalog uses two special reference number formats, one to indicate parts in a service assembly and another to indicate the quantity of a given part in an illustration.

## Service Assembly Reference Numbers

Parts in service assemblies have reference numbers in the form a:b. The a represents the reference number of the entire service assembly and the b represents a sequential number unique to each part within the service assembly.

For example, a wheel assembly might be identified by reference number 6, the tire by 6:1, the valve by 6:2, and the wheel by 6:3. When you order the assembly identified by reference number 6, you receive all parts identified by reference numbers 6:1, 6:2, and 6:3. However, you may also order any part individually. Reference numbers of this type appear in illustration and in parts lists.

## Reference Numbers Indicating Quantity

In an illustration, if a reference number indicates more than one part, the reference number has the form nX y. The n represents the quantity of the part, the X is the multiplication symbol, and the y represents the reference number.

For example, in an illustration, the reference number 2X 37 means that two of the parts identified by reference number 37 are indicated.

# List of Abbreviations

**AR:** as required

**ASM:** assembly

**BBC:** blade brake control

**BHTF:** button head thread forming

**CARR:** carriage

**CCW:** counter clockwise

**CW:** clockwise

**DEG:** degrees

**DPA:** Dual Point Adjustment

**ECM:** electronic control module

**EXT:** external

**FH:** flat head

**GA:** gauge

**HD:** heavy-duty

**HF:** hex flange

**HH:** hex head

**HHF:** hex head flange

**HHFTF:** hex head flange thread forming

**HJ:** hex jam

**HLH:** hex lag head

**HOC:** height-of-cut

**HSBH:** hex socket button head

**HSFH:** hex socket flat head

**HSH:** hex socket head

**HWH:** hex washer head

**HWHTF:** hex washer head thread forming

**HYD:** hydraulic

**LH:** left hand

**LP:** Liquefied Petroleum Gas

**LPG:** Liquefied Petroleum Gas

**NI:** nylon insert

**NPTF:** national pipe thread fine

**PFH:** phillips flat head

**PPH:** phillips pan head

**PPHTF:** phillips pan head thread forming

**PRH:** phillips round head

**PTH:** phillips truss head

**PTO:** power-take-off

**RH:** right hand

**ROPS:** roll-over protection system

**RRB:** rear roller brush

**SFH:** slotted fillister head

**SHH:** slotted hex head

**SHWH:** slotted hex washer head

**SPH:** slotted pan head

**SQH:** square head

**SRH:** slotted round head

**STD:** standard

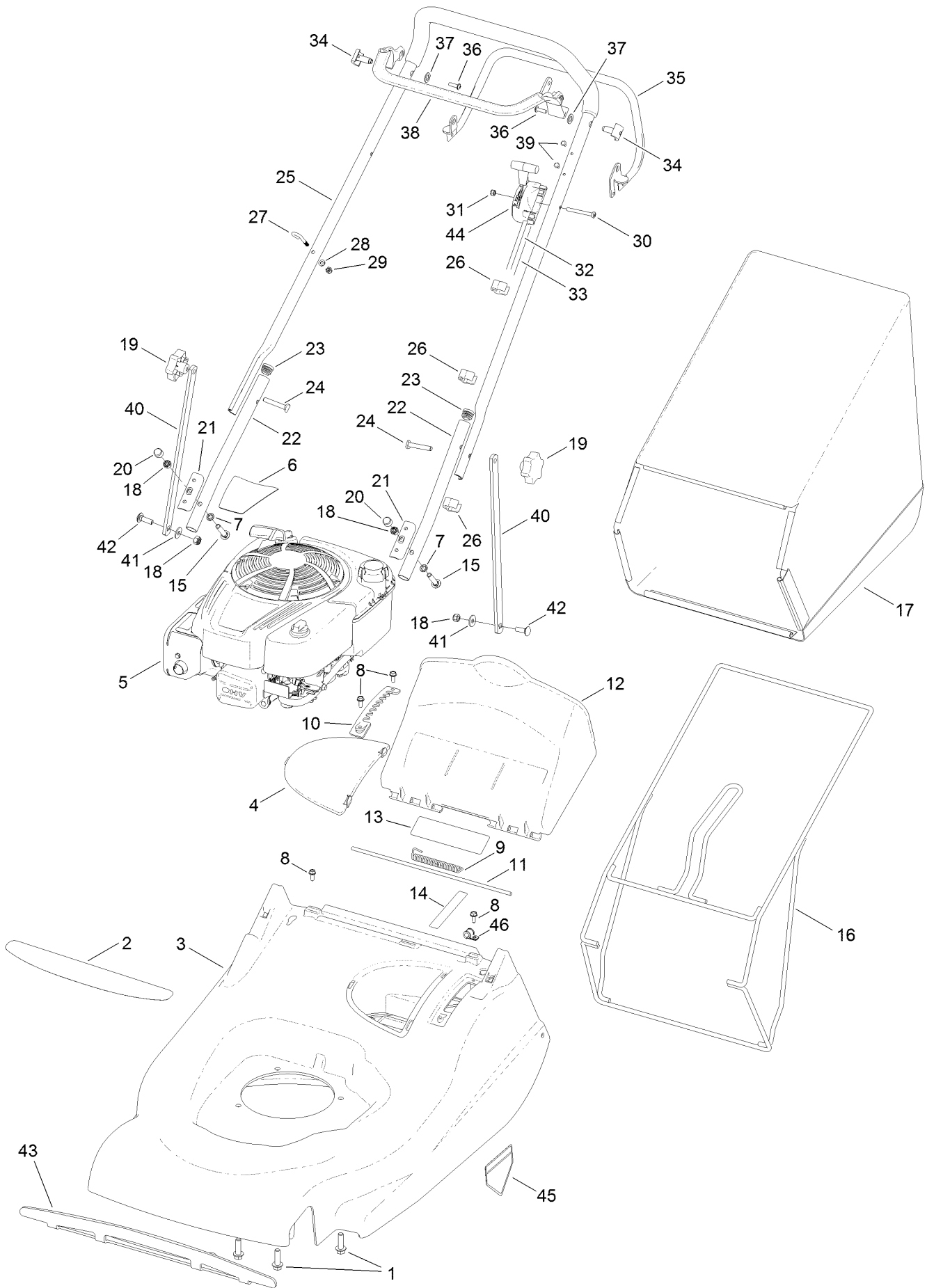
**TAP:** self tapping

**TTH:** torx truss head

# Contents

Upper Assembly ..... 4  
Lower Assembly ..... 6

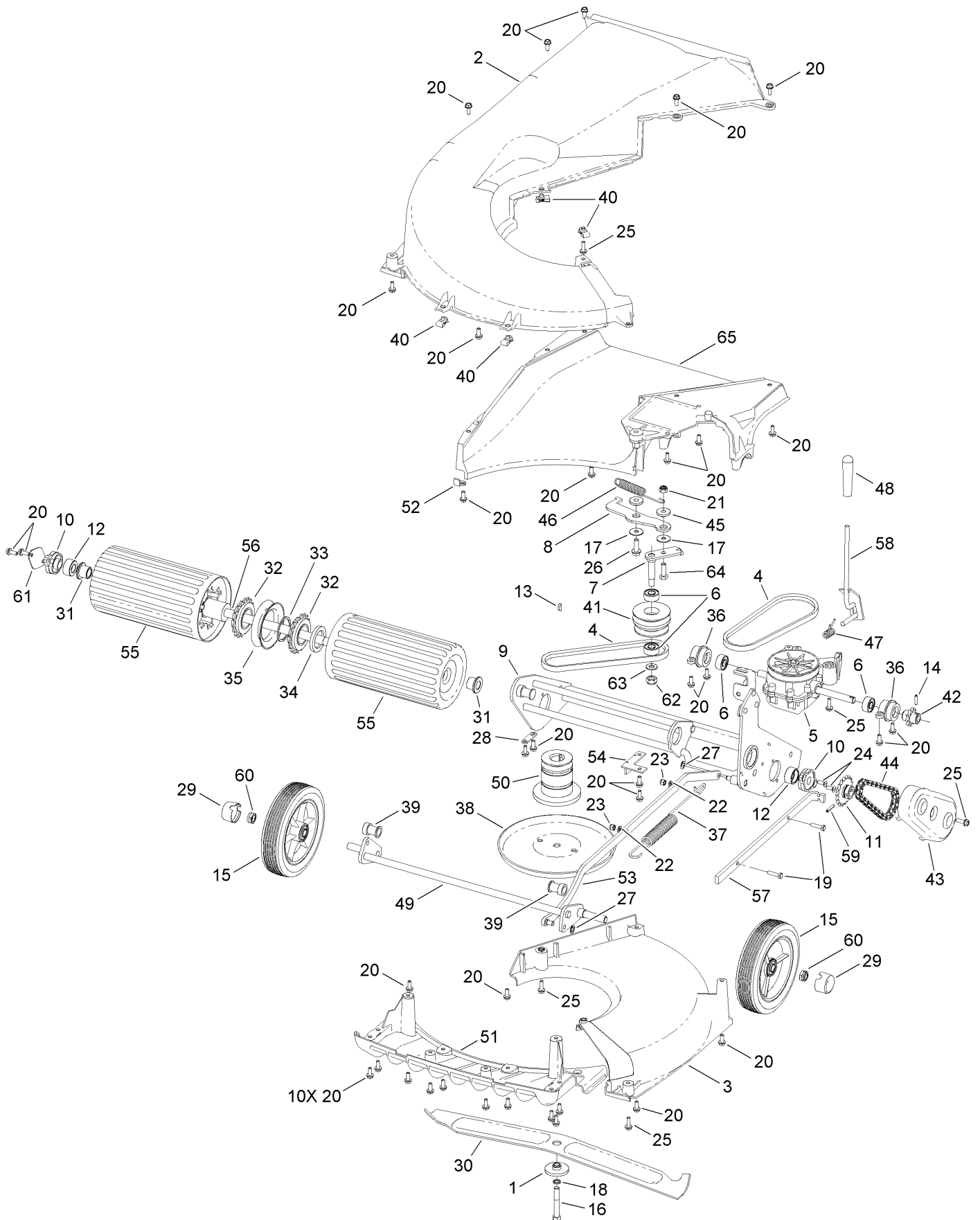
# Upper Assembly



## Upper Assembly (continued)

<i>Ref.</i>	<i>Part Number</i>	<i>Qty.</i>	<i>Description</i>	<i>Ref.</i>	<i>Part Number</i>	<i>Qty.</i>	<i>Description</i>
1	09349	3	Screw-Taptite, Unc	24	09785	2	Bolt
2	111-5439	1	Decal-Deck	25	111-0519	1	Handlebar-Upper
3	111-5553	1	Deck	26	410037	3	Guide-Cable
4	560015	1	Cover-Battery	27	305093	1	Guide-Rope
5	111-5341	1	Engine-Briggs, 121Q020130F1	28	09472	1	Washer-Plain
6	111-5438	1	Decal-Engine	29	09544	1	Nut-Nyloc
7	04020	2	Grip-Fix	30	09780	1	Setscrew
8	09365	4	Screw-Taptite	31	09438	1	Nut-Nyloc
9	410030	1	Spring-Deflector	32	111-0997	1	Cable-Engine, Brake
10	560018	1	Ratchet-Plate, HOC	33	111-1469	1	Cable-Clutch
11	560017	1	Rod-Deflector	34	340182	2	Pin-Pivot
12	111-1714	1	Deflector-Rear	35	111-1921-03	1	Lever-Clutch
13	111-5929	1	Decal-Safety	36	09687	2	Screw
14	111-6866	1	Decal HOC	37	09688	2	Washer-Nylon
15	09379	2	Bolt-Coach	38	340179	1	Lever-Engine
16	111-1497-03	1	Frame-Grassbag	39	300144	2	Fastener-Drive
17	111-5340	1	Grassbag-Fabric	40	111-3324-03	2	Brace-Handlebar
18	09441	4	Nut-Hex, NI	41	09267	2	Washer
19	480088	2	Knob-Handlebar	42	09373	2	Bolt-Coach
20	HY234051	2	Cap-Nut	43	111-3117-03	1	Bar-Bump, Plate
21	340028	2	Plate-Clamp, Handlebar	44	111-3444	1	Control-Speed, Engine
22	111-1384-03	2	Handlebar-Lower	45	94-8072	1	Decal-Danger
23	300160	2	Plug-Tube	46	70-07-109	1	Clip-Cable

# Lower Assembly



## Lower Assembly (continued)

<i>Ref.</i>	<i>Part Number</i>	<i>Qty.</i>	<i>Description</i>	<i>Ref.</i>	<i>Part Number</i>	<i>Qty.</i>	<i>Description</i>
1	HY4014	1	Spacer-Distance, Cutterbar	34	340163	1	Locknut
2	111-1164	1	Underdeck-Fixed	35	340168	1	Shroud-Freewheel
3	111-1163	1	Underdeck-Removable	36	410048	2	Housing-Pivot Bearing, LH
4	411024	2	Belt-Variator (520)	37	410050	1	Spring-Counter Balance
5	111-3422	1	Gearbox ASM	38	410057W	1	Disc-Friction
6	111-1276	4	Bearing	39	410069	2	Bearing-Axle, Front
7	111-3326	1	Lever Take-Up ASM	40	410076	4	Nut
8	111-3250	1	Arm-Plate, Take-Up	41	111-3109	1	Pulley (Take-Up)
9	111-1485-03	1	Frame-Roller, Rear	42	411011	1	Sprocket-Gearbox
10	111-1492	2	Bearing-Roller	43	411013	1	Cover-Drive
11	111-1552	1	Sprocket-18T	44	411016	1	Chain-40 Pitches (3/8 Inch Link)
12	111-1860	2	Cover-Dust, Bushing	45	411031	2	Bushing-Pivot
13	1662	1	Key-Woodruff	46	HY412004	1	Spring-Variator
14	03997	1	Pin-Roll	47	480132	1	Spring-Torsion, HOC
15	111-1250	2	Wheel-Ribbed	48	480134	1	Knob-HOC
16	09122	1	Bolt-Unf	49	560008	1	Axle-Front
17	09270	2	Washer-Plain	50	111-3320	1	Boss-Blade, Carrier
18	09273	1	Washer-Spring	51	111-3364	1	Fins-Front
19	09364	2	Screw-HH	52	560027	1	Clamp
20	09365	35	Screw-Taptite	53	560028	1	Rod-Connecting
21	09441	1	Nut-Hex, NI	54	560029	1	Bracket-Rod
22	09472	2	Washer-Plain	55	560031W	2	Roller-Rear
23	09544	2	Nut-Nyloc	56	111-1717	1	Shaft-Roller
24	09545	2	Screw-Taptite	57	560037	1	Bar-Tension, Spring
25	09575	7	Screw-Taptite	58	560046	1	Lever-HOC
26	09787	1	Screw-Taptite	59	HY03354	1	Pin-Spring, Selloc
27	0201086	2	Washer-Starlock	60	HY4486	2	Nut-Unf
28	219037	1	Plate-Securing	61	111-1861	1	Plate-Cover, Dust
29	111-1251	2	Cap-Hub	62	ZNN1J000U	1	Nut-Hex, NI
30	340015	1	Cutterbar	63	ZWQ1J000U	1	Washer-Heavy, Plain
31	340129	2	Bushing-Roller, Oilite	64	03162	1	Screw-HH
32	340150	2	Freewheel-Roller	65	560011-03	1	Throwplate
33	340157	1	Spacer-Steel				



**Count on it.**