



Count on it.

Parts Catalog

Spiker

Sand/Infield Pro® 3040 and 5040 Traction Unit

Model No. 08755—Serial No. 280000001 and Up



Ordering Replacement Parts

To order replacement parts, please supply the part number, the quantity, and the description of each part desired.

Understanding Reference Numbers

Each identified part in an illustration has a reference number. The reference number for a part also appears in the parts list, along with other information about the part.

This catalog uses two special reference number formats, one to indicate parts in a service assembly and another to indicate the quantity of a given part in an illustration.

Service Assembly Reference Numbers

Parts in service assemblies have reference numbers in the form a:b. The a represents the reference number of the entire service assembly and the b represents a sequential number unique to each part within the service assembly.

For example, a wheel assembly might be identified by reference number 6, the tire by 6:1, the valve by 6:2, and the wheel by 6:3. When you order the assembly identified by reference number 6, you receive all parts identified by reference numbers 6:1, 6:2, and 6:3. However, you may also order any part individually. Reference numbers of this type appear in illustration and in parts lists.

Reference Numbers Indicating Quantity

In an illustration, if a reference number indicates more than one part, the reference number has the form nX y. The n represents the quantity of the part, the X is the multiplication symbol, and the y represents the reference number.

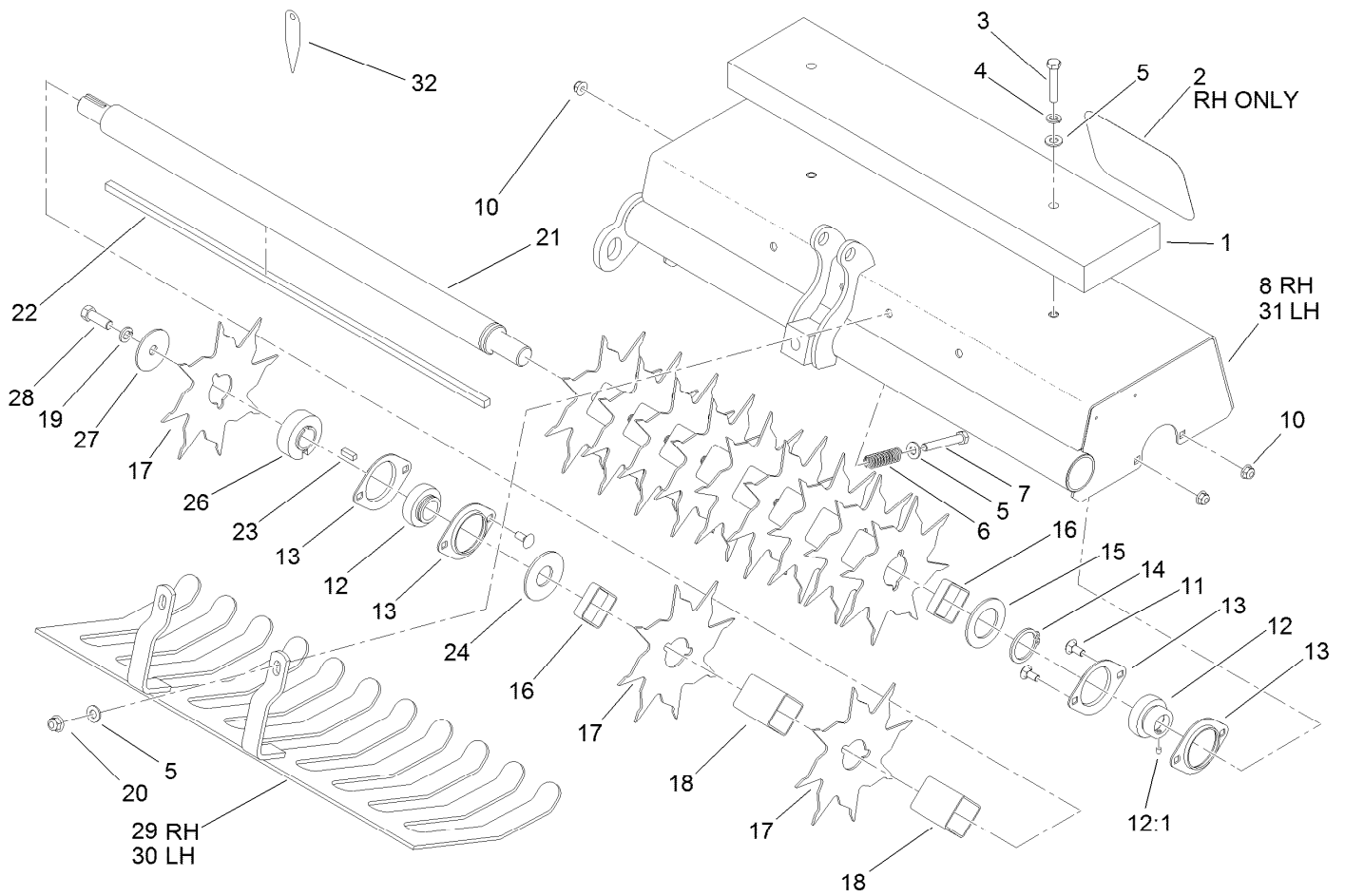
For example, in an illustration, the reference number 2X 37 means that two of the parts identified by reference number 37 are indicated.

List of Abbreviations

AR: as required	HLH: hex lag head	PTO: power-take-off
ASM: assembly	HOC: height-of-cut	RH: right hand
BBC: blade brake control	HSBH: hex socket button head	ROPS: roll-over protection system
BHTF: button head thread forming	HSFH: hex socket flat head	RRB: rear roller brush
CARR: carriage	HSH: hex socket head	SFH: slotted fillister head
CCW: counter clockwise	HWH: hex washer head	SHH: slotted hex head
CW: clockwise	HWHTF: hex washer head thread forming	SHWH: slotted hex washer head
DEG: degrees	HYD: hydraulic	SPH: slotted pan head
DPA: Dual Point Adjustment	LH: left hand	SQH: square head
ECM: electronic control module	LP: Liquefied Petroleum Gas	SRH: slotted round head
EXT: external	LPG: Liquefied Petroleum Gas	STD: standard
FH: flat head	NI: nylon insert	TAP: self tapping
GA: gauge	NPTF: national pipe thread fine	TTH: torx truss head
HD: heavy-duty	PFH: phillips flat head	
HF: hex flange	PPH: phillips pan head	
HH: hex head	PPHTF: phillips pan head thread forming	
HHF: hex head flange	PRH: phillips round head	
HHFTF: hex head flange thread forming	PTH: phillips truss head	
HJ: hex jam		

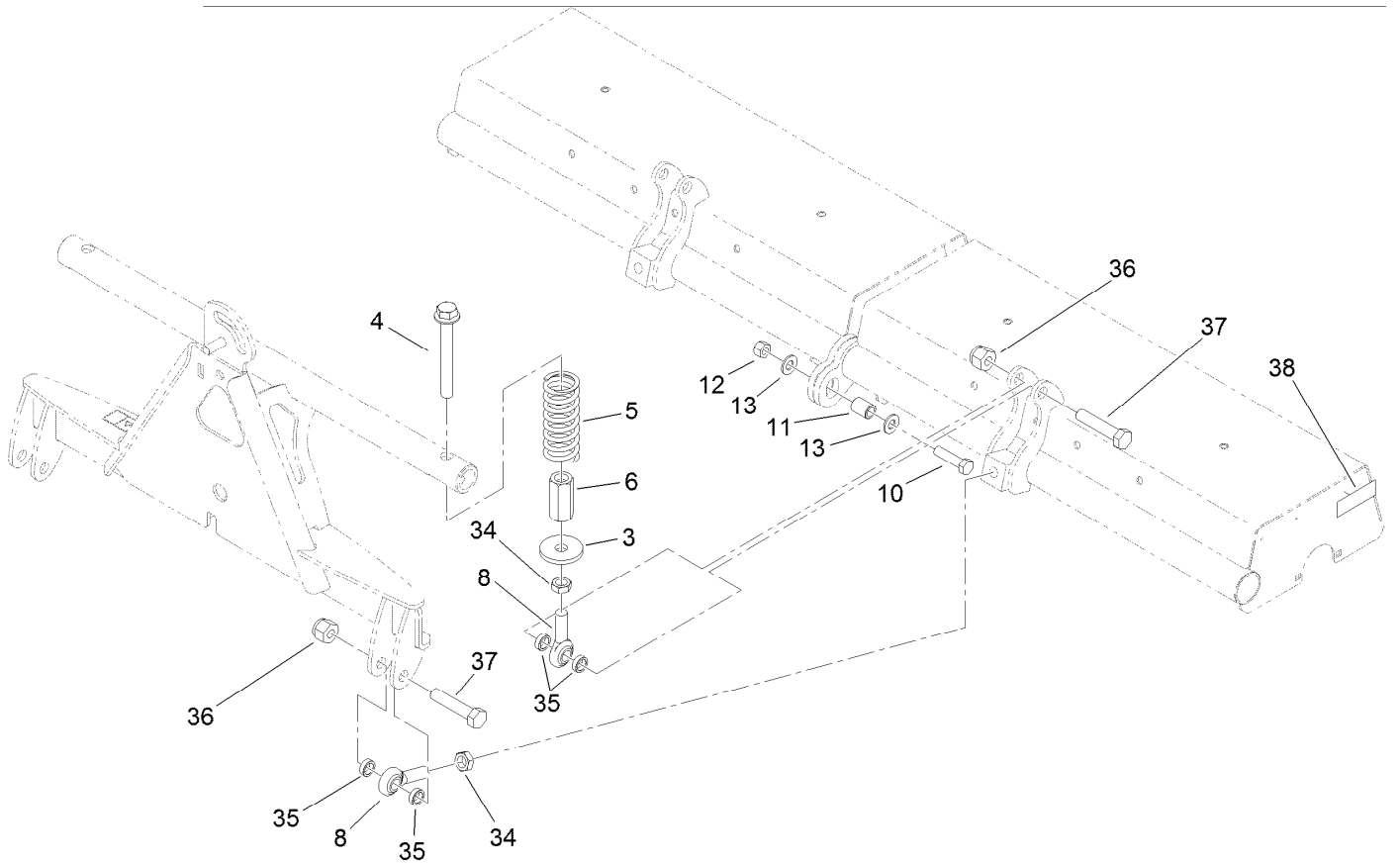
Contents

- Spiker Assembly 4
- Spiker Suspension Assembly 5
- Adapter and Lock Assembly 6
- Link Assembly No. 110-8105 7
- Attachments and Accessories 8



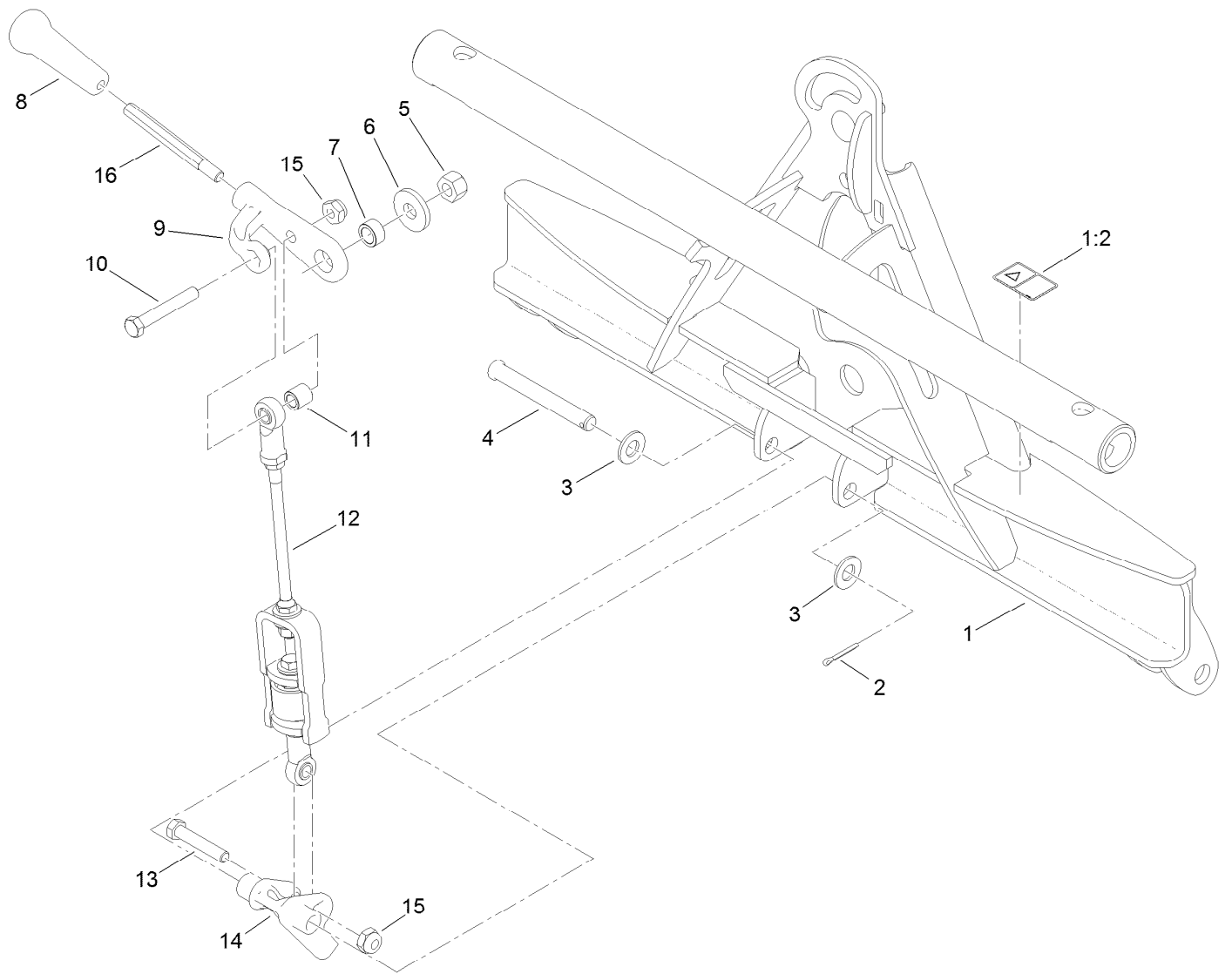
Spiker Assembly

Ref.	Part Number	Qty.	Description	Ref.	Part Number	Qty.	Description
1	20-9430-01	2	Weight	17	20-7380-01	24	Blade-Spike, Profiled
2	62-5550	1	Decal	18	20-9480	20	Spacer
3	323-10	4	Screw-HH	19	3253-6	2	Washer-Lock
4	3253-21	4	Washer-Lock	20	104-8301	4	Nut-Flange, NI
5	3256-24	12	Washer-Flat	21	92-7196	2	Shaft
6	20-9550	4	Spring-Compression	22	20-9460	2	Key-Square
7	323-12	4	Screw-HH	23	20-9540	2	Key-Square
8	108-2911-01	1	Housing-Spiker, RH	24	20-9500	2	Washer
10	104-8300	8	Nut-Flange, NI	26	112-7690-01	2	Hub ASM
11	3230-1	8	Bolt-CARR	27	87-5100	2	Washer-Snubbing
12	251-253	4	Bearing	28	324-5	2	Screw-HH
12:1	3245-35	1	Screw-Set, HSH	29	112-7679-01	1	RH Fork ASM
13	251-255	8	Flange	30	112-7680-01	1	LH Fork ASM
14	32151-44	2	Ring-Retaining	31	108-2910-01	1	Housing-Spiker, LH
15	20-9490	2	Washer	32	21-6000	1	Gage-Depth, Spiker
16	20-7400	4	Spacer-End				



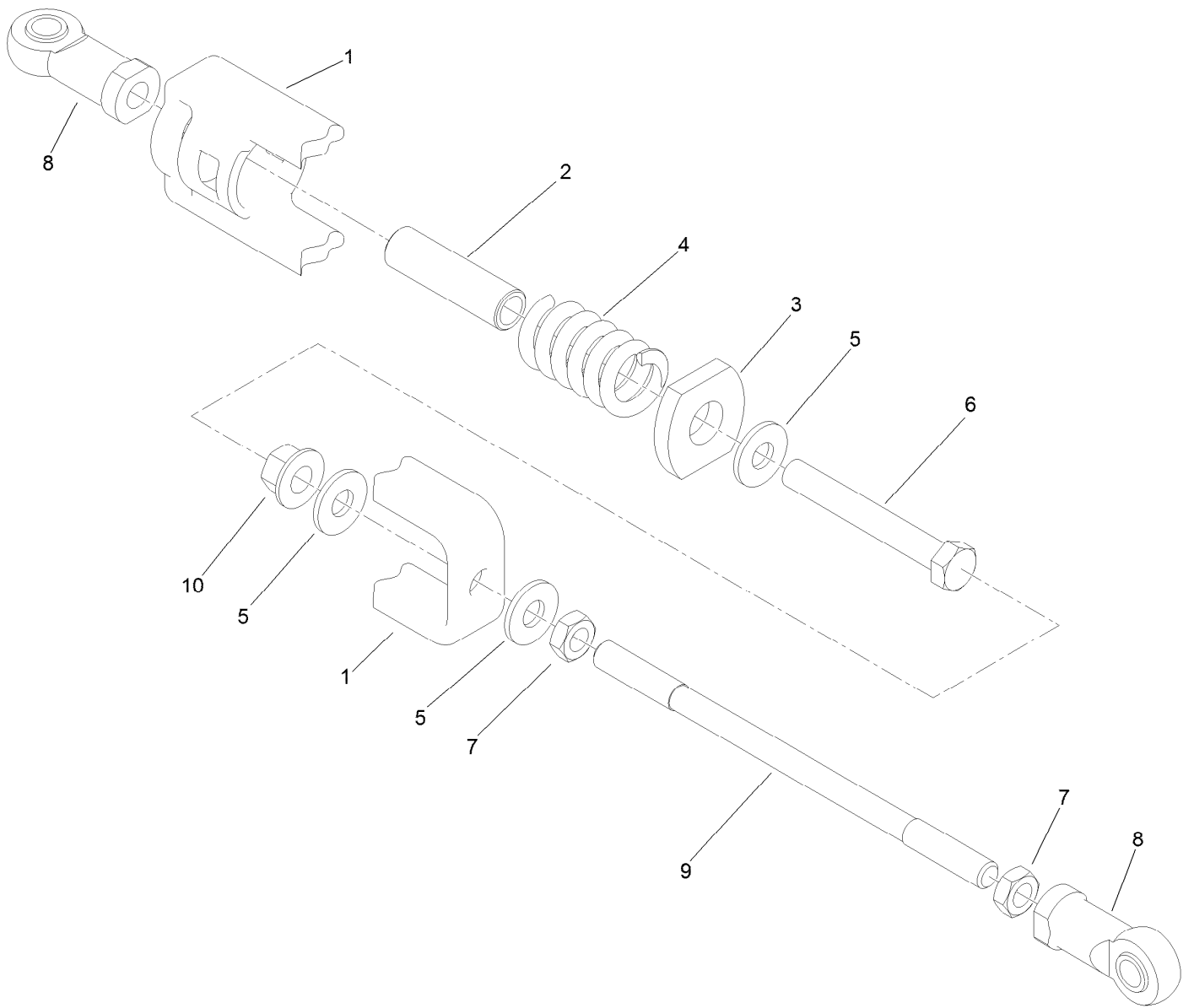
Spiker Suspension Assembly

<i>Ref.</i>	<i>Part Number</i>	<i>Qty.</i>	<i>Description</i>
3	104-5901	2	Washer
4	105-1763	2	Screw-HHF
5	112-0024	2	Spring-Compression
6	112-0023	2	Nut-Hex, Coupling
8	1-633029	4	Balljoint-Spherical
10	325-8	1	Screw-HH
11	20-9410	1	Tube-Support, Center
12	3296-25	1	Nut-Lock, NI
13	3256-26	2	Washer-Flat
34	3220-6	4	Nut-Jam
35	98-2389	8	Spacer-Link, Pull
36	3296-24	4	Nut-Lock, NI
37	104-5895	4	Screw-HH
38	114-4385	1	Decal-Regulatory



Adapter and Lock Assembly

<i>Ref.</i>	<i>Part Number</i>	<i>Qty.</i>	<i>Description</i>	<i>Ref.</i>	<i>Part Number</i>	<i>Qty.</i>	<i>Description</i>
1	112-0029	1	Spiker Adapter ASM	9	112-7695-03	1	Handle
1:2	106-5517	1	Decal-Warning, Hot Surface	10	323-12	1	Screw-HH
2	3272-11	1	Pin-Cotter	11	99-2058	1	Spacer-Support, Handle
3	3256-26	2	Washer-Flat	12	110-8105	1	Link ASM
4	283-83	1	Pin-Clevis	13	323-10	1	Screw-HH
5	3296-25	1	Nut-Lock, NI	14	112-7686	1	Latch
6	92-2651	1	Washer	15	3296-44	2	Nut-Lock, NI
7	112-0038	1	Spacer	16	114-4320	1	Rod-Handle
8	99-7984	1	Knob-Soft Grip, Push-On				



Link Assembly No. 110-8105

Ref.	Part Number	Qty.	Description
1	115-6694	1	Yoke-Lift
2	110-8110	1	Spacer
3	110-8114	1	Washer
4	66-7230	1	Spring-Compression
5	3256-3	3	Washer-Flat
6	3211-12	1	Screw-HH
7	3220-3	2	Nut-HJ
8	92-7008	2	End-Rod, Female
9	110-8108	1	Rod-Link
10	32128-12	1	Nut-Lock, Flange

Attachments and Accessories

For 08755 Spiker Sand/Infield Pro 3040 and 5040 Traction Unit

Product Name	Model/Part
Weight Kit	100-6442
Spiker Depth Gauge	21-6000

Notes:

Notes:

Notes:



Count on it.