



**Count on it.**

Form No. 380-0001 Rev B

# Parts Catalog

## 300 Series Stream Rotor®

Model No. 300 Series Stream Ro



# Ordering Replacement Parts

To order replacement parts, please supply the part number, the quantity, and the description of each part desired.

## Understanding Reference Numbers

Each identified part in an illustration has a reference number. The reference number for a part also appears in the parts list, along with other information about the part.

This catalog uses two special reference number formats, one to indicate parts in a service assembly and another to indicate the quantity of a given part in an illustration.

## Service Assembly Reference Numbers

Parts in service assemblies have reference numbers in the form a:b. The a represents the reference number of the entire service assembly and the b represents a sequential number unique to each part within the service assembly.

For example, a wheel assembly might be identified by reference number 6, the tire by 6:1, the valve by 6:2, and the wheel by 6:3. When you order the assembly identified by reference number 6, you receive all parts identified by reference numbers 6:1, 6:2, and 6:3. However, you may also order any part individually. Reference numbers of this type appear in illustration and in parts lists.

## Reference Numbers Indicating Quantity

In an illustration, if a reference number indicates more than one part, the reference number has the form nX y. The n represents the quantity of the part, the X is the multiplication symbol, and the y represents the reference number.

For example, in an illustration, the reference number 2X 37 means that two of the parts identified by reference number 37 are indicated.

# List of Abbreviations

**AR:** as required

**ASM:** assembly

**BBC:** blade brake control

**BHTF:** button head thread forming

**CARR:** carriage

**CCW:** counter clockwise

**CW:** clockwise

**DEG:** degrees

**DPA:** Dual Point Adjustment

**ECM:** electronic control module

**EXT:** external

**FH:** flat head

**GA:** gauge

**HD:** heavy-duty

**HF:** hex flange

**HH:** hex head

**HHF:** hex head flange

**HHFTF:** hex head flange thread forming

**HJ:** hex jam

**HLH:** hex lag head

**HOC:** height-of-cut

**HSBH:** hex socket button head

**HSFH:** hex socket flat head

**HSH:** hex socket head

**HWH:** hex washer head

**HWHTF:** hex washer head thread forming

**HYD:** hydraulic

**LH:** left hand

**LP:** Liquefied Petroleum Gas

**LPG:** Liquefied Petroleum Gas

**NI:** nylon insert

**NPTF:** national pipe thread fine

**PFH:** phillips flat head

**PPH:** phillips pan head

**PPHTF:** phillips pan head thread forming

**PRH:** phillips round head

**PTH:** phillips truss head

**PTO:** power-take-off

**RH:** right hand

**ROPS:** roll-over protection system

**RRB:** rear roller brush

**SFH:** slotted fillister head

**SHH:** slotted hex head

**SHWH:** slotted hex washer head

**SPH:** slotted pan head

**SQH:** square head

**SRH:** slotted round head

**STD:** standard

**TAP:** self tapping

**TTH:** torx truss head

# Contents

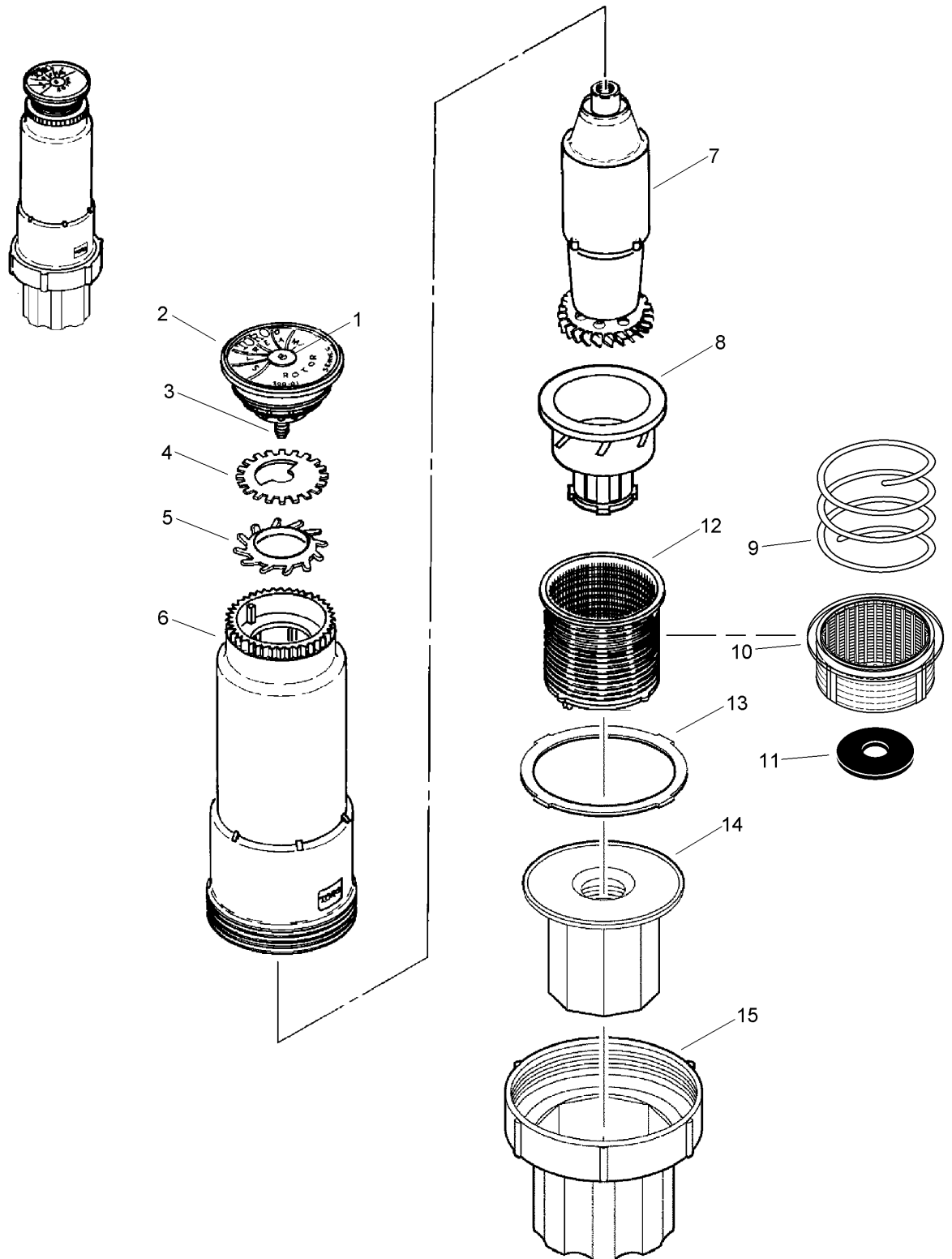
300 Shrub ..... 4

300 Lawn ..... 6

300 High-pop..... 8

300 and 340 Series Nozzles..... 10

# 300 Shrub



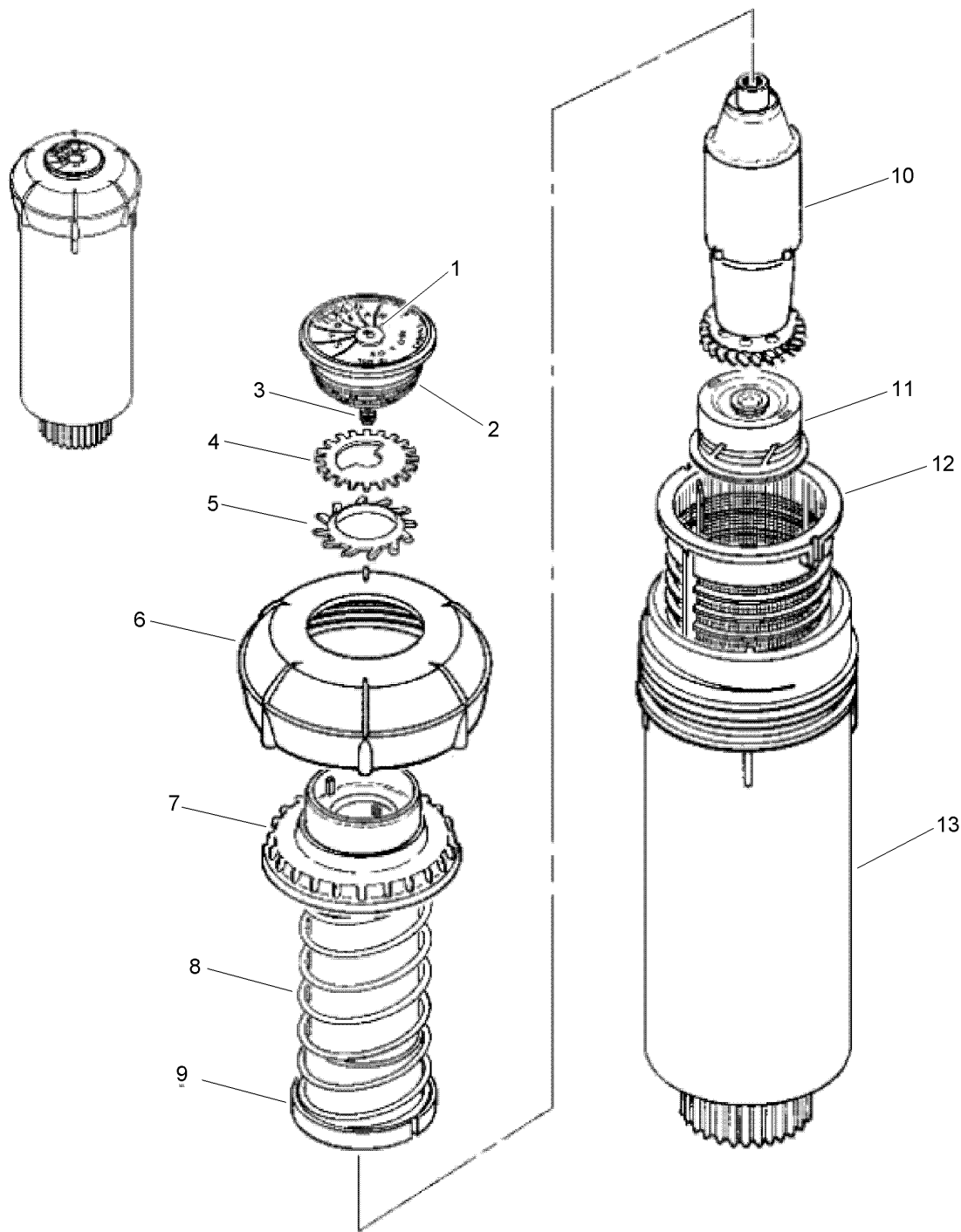
## 300 Shrub (continued)

<i>Ref.</i>	<i>Part Number</i>	<i>Qty.</i>	<i>Description</i>	<i>Ref.</i>	<i>Part Number</i>	<i>Qty.</i>	<i>Description</i>
1		1	Plug, Cap, Nozzle ▲	8	89-6929	1	Stator Assy., Shrub
2		1	Nozzle Assy. (Includes Items 1 And 3) ▲	9	102-0579	1	Check, Spring
3	360-0272	1	Screw, Machine, Nozzle, 8-32 X 7/8"	10	102-0575	1	Screen
4		1	Disc, Arc ▲	11	89-7561	1	Seal, Check, Com
5	9-2825	1	Seal, Nozzle	12	9-5212	1	Screen, Basket
6	9-5210	1	Body, Shrub	13	9-5211	1	Seal
7	9-2829	1	Drive Assy., 300 Series	14	89-6094	1	Threaded Insert, 3/4" & 1/2"
				15		1	Base, Shrub ▲
					9-5699		Insert, 3/4" ●■

● SERVICE ITEMS  
▲ Not serviced separately

■ Not illustrated

300 Lawn



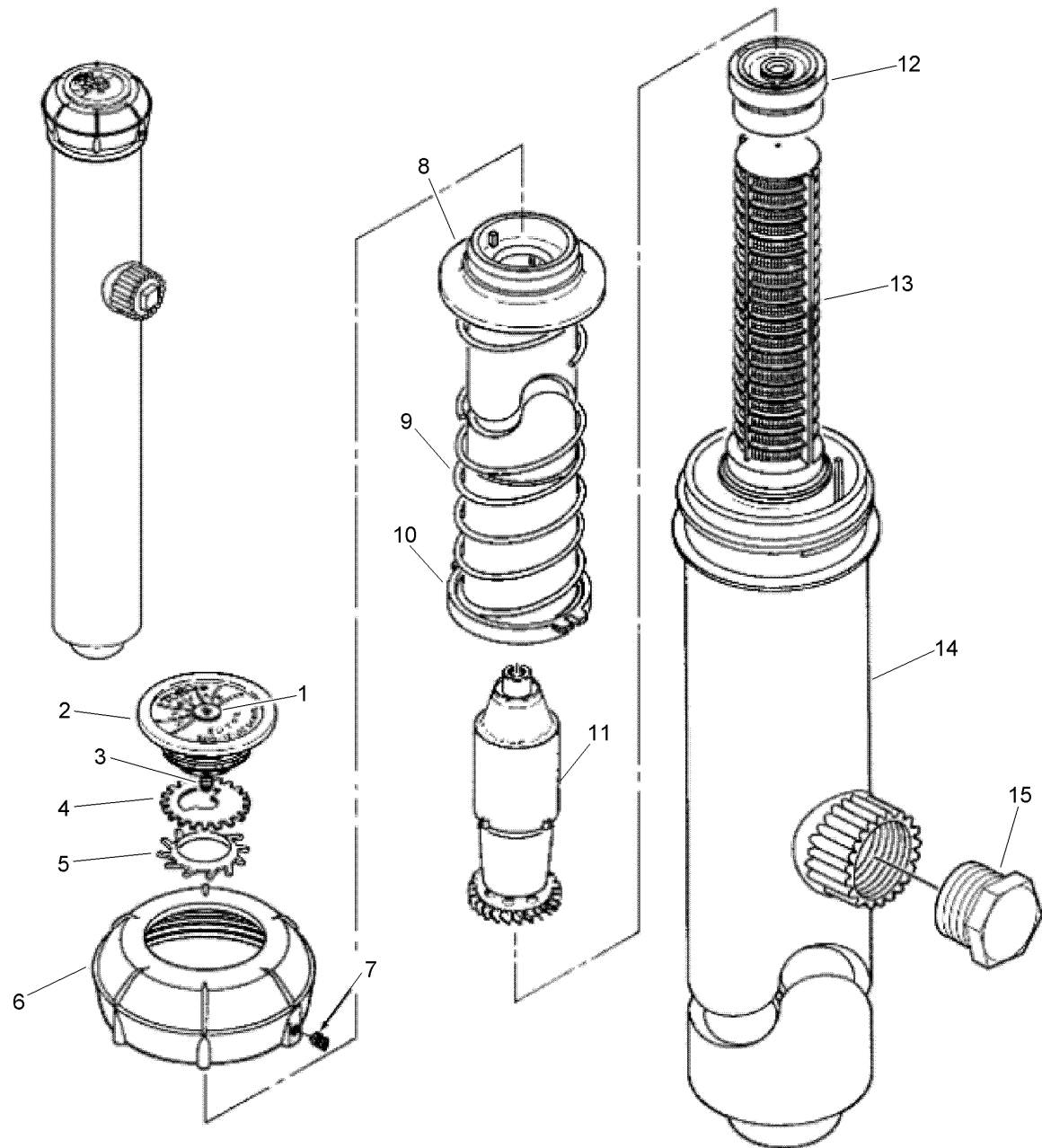
## 300 Lawn (continued)

<i>Ref.</i>	<i>Part Number</i>	<i>Qty.</i>	<i>Description</i>	<i>Ref.</i>	<i>Part Number</i>	<i>Qty.</i>	<i>Description</i>
1		1	Plug, Cap, Nozzle ▲	8	9-2137	1	Spring, Retraction
2		1	Nozzle Assy. (Includes Items 1 & 3) ▲	9	9-2836	1	Riser
3	360-0272	1	Screw, Machine, Nozzle, 8-32 X 7/8"	10	9-2829	1	Drive Assy., 300 Series
4		1	Disc, Arc ▲	11	9-5181	1	Stator Assy.
5	9-2825	1	Seal, Nozzle	12	9-2131	1	Screen, Basket
6	9-4394	1	Cap	13	9-1661	1	Body
7	9-4449	1	Seal, Riser		9-6472	1	Riser Assy. (Includes Items 9, 10 & 11) ■●

● SERVICE ITEMS  
▲ Not serviced separately

■ Not illustrated

300 High-pop

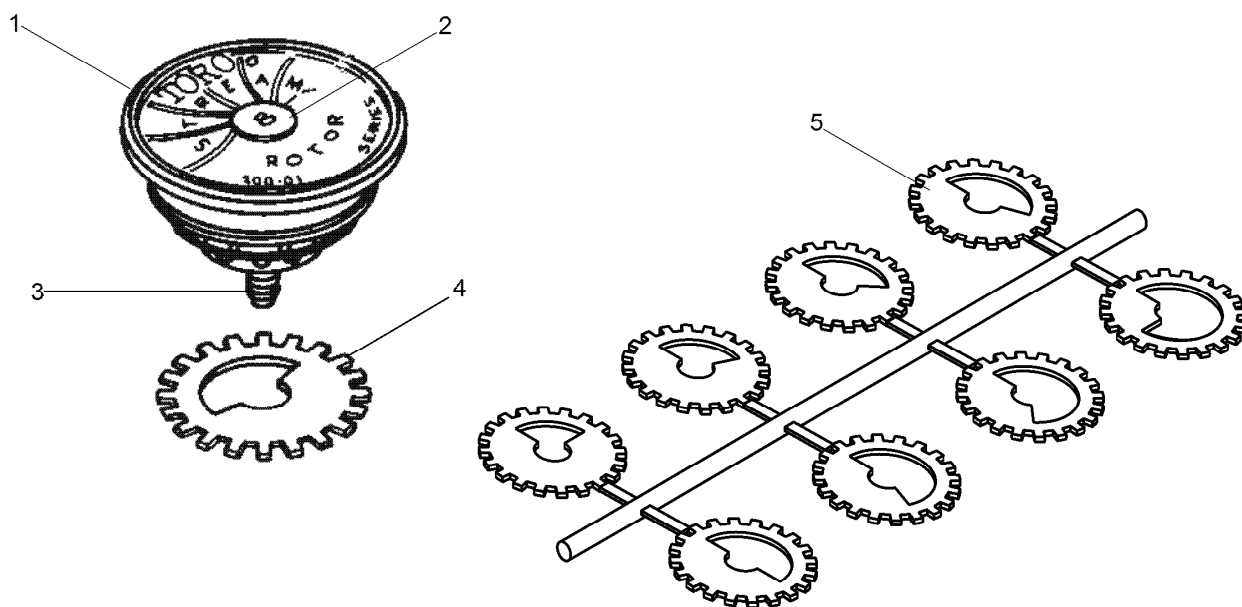




## 300 High-pop (continued)

<i>Ref.</i>	<i>Part Number</i>	<i>Qty.</i>	<i>Description</i>	<i>Ref.</i>	<i>Part Number</i>	<i>Qty.</i>	<i>Description</i>
1		1	Plug, Cap, Nozzle ●	8	9-4572	1	Seal, Riser
2		1	Nozzle Assy. (Includes Items 1 & 3) ●	9	35-7579	1	Spring, Retraction
3	360-0272	1	Screw, Machine, Nozzle, 8-32 X 7/8"	10	9-4570	1	Riser
4		1	Disc, Arc ●	11	9-2829	1	Drive Assy., 300 Series
5	9-2825	1	Seal, Nozzle	12	9-5683	1	Stator Assy.
6	35-0481	1	Cap Assy., High-Pop (Includes Item 7)	13	9-4571	1	Screen, Basket
7	360-0223	1	Screw-Set, Half-Dog Point, 6-32 X 1/4"	14	89-1960	1	Body
				15	363-3779	1	Plug, 3/4" Npt Male

● Not serviced separately



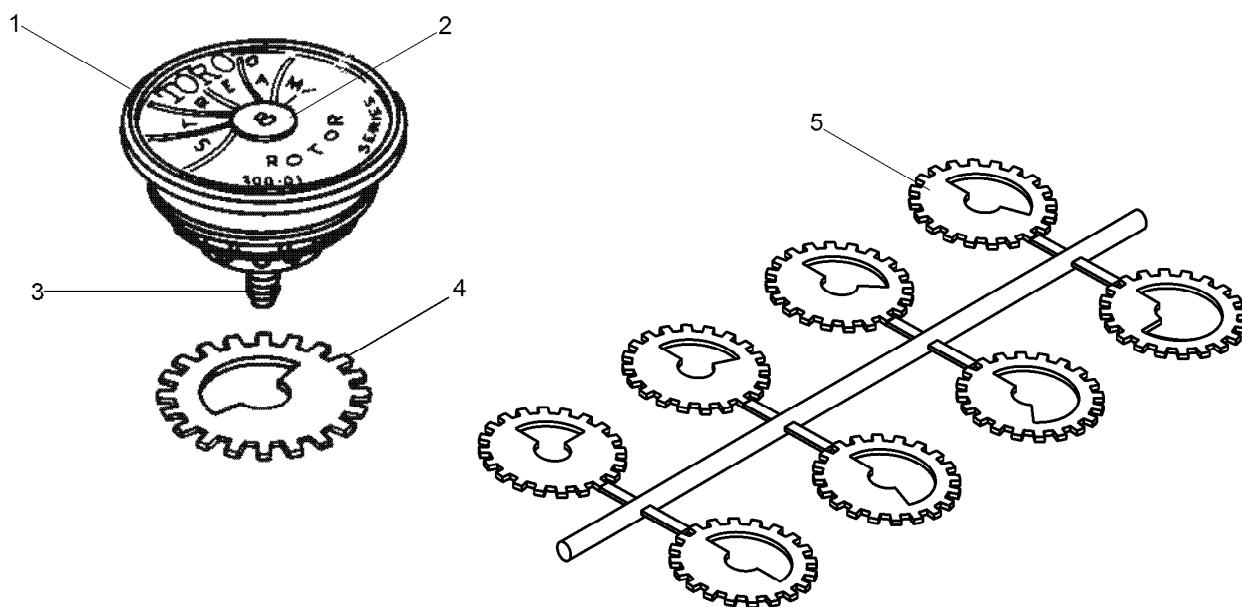
## 300 and 340 Series Nozzles

Ref.	Part Number	Qty.	Description
1	300-11	1	Nozzle Assy., 01 W/Blank Cap Plug, Bag Of 50 (Includes Items 1-3) ■
1	300-12	1	Nozzle Assy., 02 W/Blank Cap Plug, Bag Of 50 (Includes Items 1-3) ■
1	300-13	1	Nozzle Assy., 03 W/Blank Cap Plug, Bag Of 50 (Includes Items 1-3) ■
1	300-63-1	1	Nozzle Assy., 63 W/Blank Cap Plug, Bag Of 50 (Includes Items 1-3) ■
1	300-93-1	1	Nozzle Assy., 93 W/Blank Cap Plug, Bag Of 50 (Includes Items 1-3) ■
1	300-21	1	Nozzle Assy., 01 W/Blank Cap Plug, Bag Of 50 (Includes Items 1-3) ■
1	300-22	1	Nozzle Assy., 02 W/Blank Cap Plug Nozzle, Bag Of 50 (Adjustable) (Includes Items 1-3) ■
1	300-23	1	Nozzle Assy., 03 W/Blank Cap Plug Nozzle, Bag Of 50 (Includes Items 1-3) ■

Ref.	Part Number	Qty.	Description
1	300-63-12	1	Nozzle Assy., 63 W/Blank Cap Plug, Bag Of 50 (Includes Items 1-3) ■
1	300-93-12	1	Nozzle Assy., 93 W/Blank Cap Plug, Bag Of 50 (Includes Items 1-3) ■
1	300-15	1	Adjustable Stream Rotor Omni Nozzle, Bag Of 25 (Adjustable) ■
1	300-25	1	Adjustable Stream Rotor Omni Nozzles Nozzle, Bag Of 25 (Adjustable) ■
1	89-1309	1	Cover, Cap, Omni Nozzle Nozzle (Adjustable)
2	9-7048	1	Plug, Cap, Nozzle, Blank
2	89-7889	1	Plug, Cap, Nozzle, Effluent, Lavender
3	360-0272	1	Screw, Machine, Nozzle, 8-32 X 7/8
4	304-00	1	Disc, Arc, 90°, Bag Of 25 ■
4	305-00	1	Disc, Arc, 112°, Bag Of 10 ■
4	306-00	1	Disc, Arc, 135°, Bag Of 10 ■
4	307-00	1	Disc, Arc, 157°, Bag Of 10 ■
4	308-00	1	Disc, Arc, 180°, Bag Of 25 ■
4	309-00	1	Disc, Arc, 202°, Bag Of 10 ■

● Not illustrated

■ Order Through Finished Goods Distribution System - Minneapolis



## 300 and 340 Series Nozzles (continued)

Ref.	Part Number	Qty.	Description
4	310-00	1	Disc, Arc, 225°, Bag Of 10 ■
4	312-00	1	Disc, Arc, 270°, Bag Of 10 ■
4	316-00	1	Disc, Arc, 360°, Bag Of 25 ■
5	304-09-SK	1	Tree, Plastic Arc Disc (Includes All Disc) ■
	89-7853	1	Omni Nozzle Cover (Use With 300-15) ■●

Ref.	Part Number	Qty.	Description
	89-7854	1	Omni Nozzle Cover (Use With 300-25) ■●
	89-7889	1	Plug, Cap, Nozzle, Effluent, Lavender ■●

● Not illustrated

■ Order Through Finished Goods Distribution System - Minneapolis



**Count on it.**