



Spellbrook, Bishop's Stortford, Herts. CM23 4BU, England.  
Telephone: 01279 723444 Fax: 01279 723821  
E-mail: hayter.sales@toro.com / uk.service@toro.com Web: www.toro.com / www.hayter.co.uk

**FITTING INSTRUCTIONS AND SPARE PARTS LIST**  
**MK3 Cutterhead Models 02800, 02801, 02802, 02803, 02810, 02811 and 02812**  
**T4240, TM7490, TM5490, CT2120, CT2140 and LT3340**  
**Models 02750, 02700, 02701, 30655, 30656 and 30657**  
ORIGINAL VERSION (EN)  
Serial No. From 310000001 onwards

CONTENTS

Contents	Page No.
Introduction	1
Safety precautions	2 - 3
Delivery Checklist	3
Specifications & Weights	3
Assembling the cutterheads (changing from left hand to right hand)	4 - 6
Declaration of Incorporation	6
Spare Parts List	7 - 9
Warranty	10

INTRODUCTION

The MK3 cutterhead is a precision built unit designed for all weather cutting, a high standard of finish and long life. The Mk3 cutterhead is available with a 4, 6, 8 or 10 bladed cutting cylinder (200mm diameter) or a 4, 6 or 8 bladed cutting cylinder (254mm diameter). This is supplied in left hand configuration which can be changed to right hand by reassembly of a few components. The way in which this unit is operated and maintained will have a profound effect on performance and reliability.

The MK3 cutterhead should not be fitted to any other machines than those stated above.

**This instruction sheet should be regarded as part of the machine, as it gives essential information regarding machine safety, specifications, assembly and maintenance.**

For all other information refer to your Operator's Manual and Parts List.

In pursuit of continuous product development, TORO reserve the right to alter specifications without notice.

**Left and Right :** Throughout this instruction sheet refers to the mower when looking in the direction of forward travel.

## SAFETY PRECAUTIONS



**THIS SYMBOL MEANS BE ALERT! YOUR SAFETY IS INVOLVED.  
EXERCISE GREAT CARE AND FOLLOW THE ADVICE GIVEN TO AVOID POTENTIAL  
HAZARDOUS SITUATIONS**



**Before working on the machine it is essential that you read and understand the Safety Precautions as shown in the Operator's Manual.**



**Before working on the machine it is essential that :**

- The engine is switched off.
- The parking brake is applied.
- There is no pressure in the hydraulic system.
- The cutterheads are fully down on the ground.
- Disconnect the battery terminals and ensure no contact is made between the terminals and machines metalwork.



**WARNING: PREVENT ACCIDENTS - Take care to avoid the sharp edges of the cutting cylinder and bottom blade when lifting or working on the cutterhead.**



**The cutterhead is heavy - It is recommended that suitable lifting equipment be used when removing the cutterhead from the carton and during installation.**



**WARNING: ALWAYS SEEK PROFESSIONAL ADVICE FROM YOUR LOCAL AUTHORISED DEALER IF, AFTER STUDYING THIS, YOU ARE UNSURE HOW TO FIT THIS KIT.**

### Decals

Serial label

Part No: Various

Location: Left hand end of the cutterhead.

**Fig 1**



**WARNING - Danger of severing fingers or toes in cutting mechanism**

Part No: 40-13-010

Location: On the top of the cutterhead

**Fig 2**



**WARNING - Height of cut adjustment**

Part No: 63-13-039

Location: Wrapped around the height of cut adjusters

**Fig 3**



## SAFETY PRECAUTIONS CONTINUED

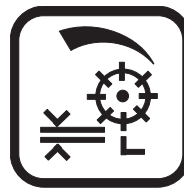
### Decals cont'd

**WARNING** - Cylinder cut adjustment

Part No: 214053

Location: On the front of the cutterhead

Fig 4



## DELIVERY CHECKLIST

Check that all parts are delivered correctly. Remove the cutterhead from the carton and check that all loose items have been supplied correctly. Refer to the delivery checklist below. If any items are missing contact your local dealer.

DESCRIPTION	PART NO.	QTY	QTY
		200MM	254MM
Pin Pivot	65-05-120	1	0
Pin Pivot	65-05-127	0	1

## SPECIFICATIONS

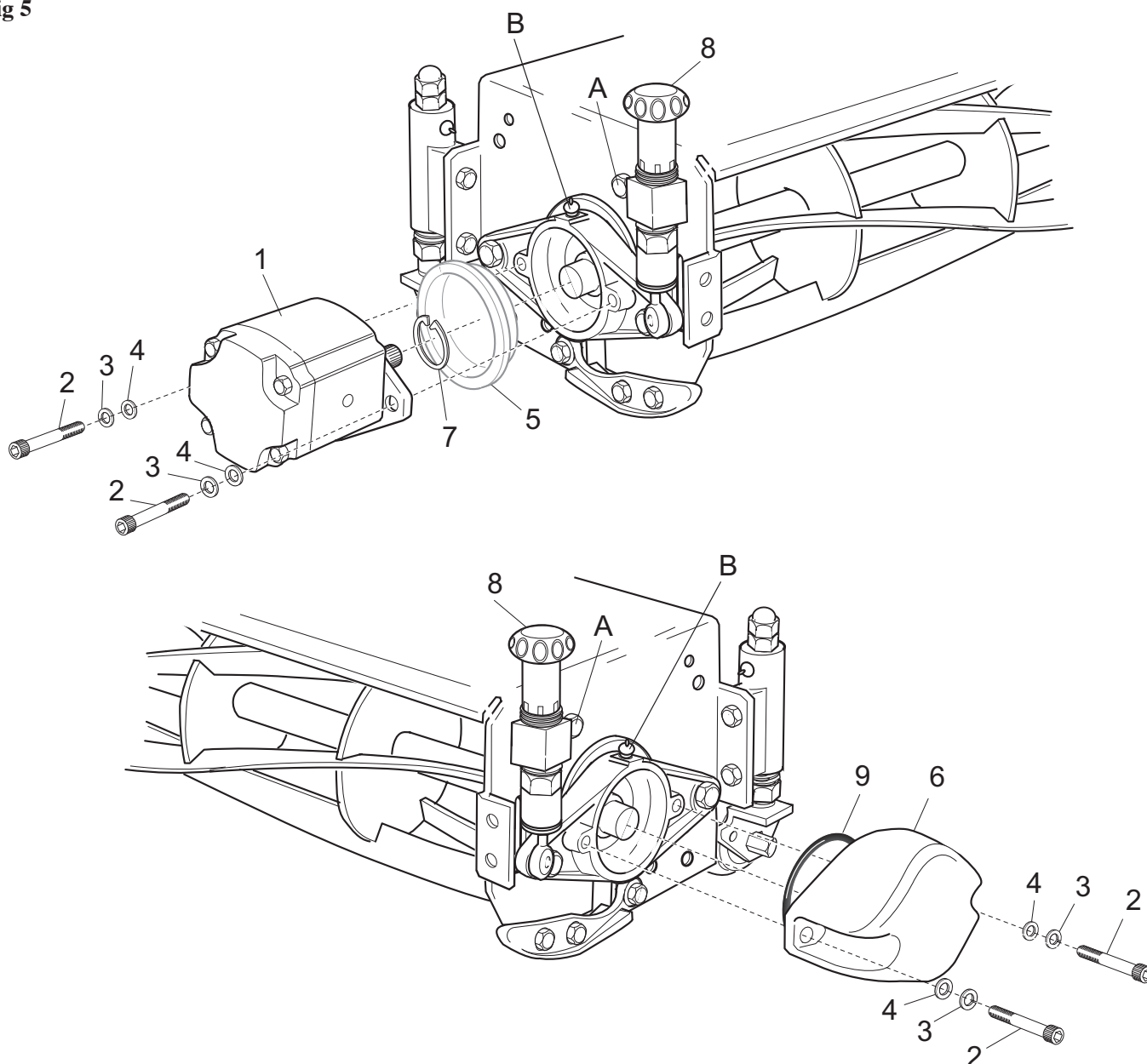
	200MM VERSION				254MM VERSION		
MODEL:	4 BLADE	6 BLADE	8 BLADE	10 BLADE	4 BLADE	6 BLADE	8 BLADE
MODEL NO:	02800	02801	02802	02803	02810	02811	02812
CYLINDER DRIVE:	Hydraulic motor						
CUTTING WIDTH:	762mm (30")				762mm (30")		
CYLINDER DIAMETER:	200mm (8")				254mm (10")		
HEIGHT OF CUT:	12 - 80mm (0.5 - 3.15")				12 - 80mm (0.5 - 3.15")		
SMOOTH REAR ROLLER:	Standard				Standard		
SMOOTH FRONT ROLLER:	Optional				Not applicable		
GROOVED FRONT ROLLER:	Optional				Not applicable		
CONFIGURATION:	Fixed (Floating head kit available)				Fixed only		
WEIGHT:	72Kg	75Kg	78Kg	81Kg	80.5Kg	83.5Kg	90Kg

## ASSEMBLING THE CUTTERHEAD

ITEM NO.	DESCRIPTION
----------	-------------

- |    |  |
|----|--|
| 1. | MOTOR  |
| 2. | SCREW  |
| 3. | SPRING WASHER                                |
| 4. | WASHER                                       |
| 5. | PLUG - PROTECTIVE COVER (REMOVE AND DISCARD) |
| 6. | COUNTER WEIGHT                               |
| 7. | CIRCLIP                                      |
| 8. | CYLINDER ADJUSTMENT HAND WHEEL ASSEMBLY      |
| 9. | 'O' RING                                     |

Fig 5



## ASSEMBLING THE CUTTERHEAD CONTINUED

Refer to the relevant Operator's Manual for cutterhead installation instructions. The component parts required for installation will vary according to machine type and cutterhead position.

To change a cutterhead from left hand to right hand configuration:

1. Remove the protective cover (Item 5) and discard. Remove the circlip (Item 7). Remove the counterweight (Item 6) together with the 'O' ring (Item 9) and refit to the non-drive end.
2. Tighten each of the two socket head cap screws and tighten to a torque of 80Nm (59 lbs.ft).  
Repeat steps 1 to 3 for the remaining cutterheads.
3. Fit the circlip (Item 7) to the drive end.  
**Note: It is important that the Circlip is fitted to the drive end.**

When fitting the cutterhead to a machine, the reel adjustment hand wheel assemblies (Item 8) may require repositioning to suit the application. Refer to the relevant Operator's Manual.

4. Remove the nut, bolt and washers from alternative hole position. Refer to Fig 5, item A.
5. Remove the nut and washer which attach the hand wheel assembly to the cutterhead frame.
6. Remove the ring bolt clamp nut, washer, spring washer and then remove the hand wheel assembly. Adjust the hand wheel assembly to provide the correct fastening centres and refit in the alternative position. Replace all fasteners and tighten securely.  
Repeat steps 4 - 6 for other cutterheads where required.
7. Attaching the MK3 cutterheads to the machine:
  1. Unlatch and lower the relevant arm to the ground.
  2. **250mm cutterheads only** - Using the 400mm long cutterhead pin already fitted to the arm, remove the nut cap, nut and washer from the cutterhead pin.
  2. **200mm cutterheads only** - Remove the cutterhead pin assembly already fitted to the arm, and dismantle the M24 nut, M24 washer, nut cap and pear-drop bush. Refit these items onto the 353mm long pin supplied with the cutterhead. Fit this assembly onto the arm.
  3. Slide the cutterhead onto the pin until the arm bush mates with the pivot casting. Fit the M24 washer and nyloc nut, and tighten. Slacken the nut by 1/8 - 1/4 turn to allow the cutterhead to pivot freely.
  4. Attach the cutterhead motor (item 1) to the drive end of the cutterhead, using the fasteners already fitted to the motor mounting. Tighten these bolts to a torque of 80Nm (59 lbs ft)

## ASSEMBLING THE CUTTERHEAD

8. Immediately following the installation, it is **essential** that all bearing housings are filled full of grease via the grease nipples. Refer to Fig 5, item B.

This will require a significant quantity of grease. We recommend the use of B.P Keenomax L2 grease for long life performance.

## DECLARATION OF INCORPORATION

### EC DECLARATION OF INCORPORATION

Manufactured by: HAYTER LIMITED,

Address: Spellbrook, Bishop's Stortford, Herts. CM23 4BU. ENGLAND

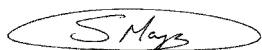
declare that the lawnmower :

Model name: **MK3 Cutterheads**

Model No's: 02800 02801 02802 02803 02810 02811 02812

The above named units must not be put into service unless the power unit to which it is fitted has been declared in conformity with the provisions of 2004/42/EC Essential Health & Safety Requirements relating to the Design and Construction of Machinery and Safety Components and the regulations transposed into national law.

Authorised Signatory:



S.A Maryniak  
(Technical Director)

Date: 12.04.10

Declaration done and technical documentation kept at:  
HAYTER LIMITED  
Spellbrook, Bishop's Stortford,  
Herts. CM23 4BU ENGLAND

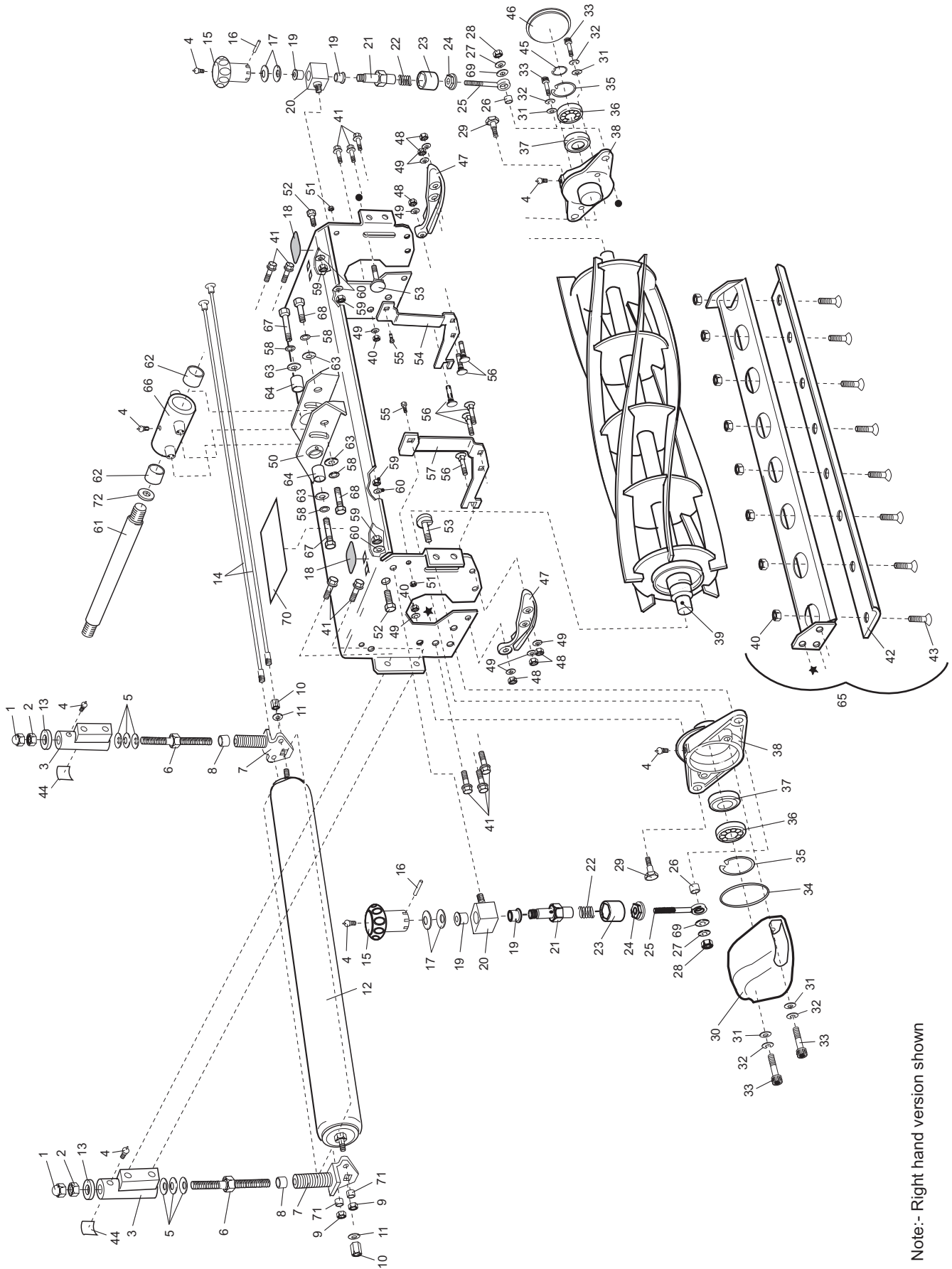
**SPARE PARTS LIST**

ITEM NO.	DESCRIPTION	PART NO.	QTY	QTY
			200MM	254MM
1	NUT - M12 DOME	ZNK1L000U	2	2
2	NUT - M12 LOCK	ZNL1L000U	2	2
3	ROLLER MOUNTING W/A.	876064W	2	2
4	NIPPLE BSP 1/8" STRAIGHT	10-11-017	7	7
5	DISC SPRING DIA 25*12.2*1.5 THK	876099	6	6
6	STUD - REAR ROLLER ADJUSTING W/A	63-01-960	2	2
7	SCREW - ADJUSTER W/A	876027	2	2
8	SPACER - STEEL 26*38*12.5	63-02-123	2	2
9	NUT - M6 NYLOC	ZNN1F000U	4	1
10	NUT - ROLLER	876062	2	2
11	WASHER - SPRING M16	HY4200	2	2
12	ROLLER - SMOOTH 76 DIA	876006	1	1
13	CAP PRESSURE CONTROL	876098	2	2
14	SCRAPER WIRE 30MM	63-07-072	2	2
15	HANDWHEEL	876013W	2	2
16	PIN - SPIROL DIA 5*30	09730	2	2
17	DISC SPRING DIA 35.5*18.3*25	876034	4	4
18	DECAL - CYLINDER ON CUT ADJUSTER	214053	2	2
19	BEARING FLANGED 18*20*12 FLANGED	876082	4	4
20	TRUNNION	876047	2	2
21	ADJUSTER SLEEVE	876085	2	2
22	SPRING COMPRESSION	876003	2	2
23	CAGE BACKLASH	876053	2	2
24	NUT - BACKLASH	876054	2	2
25	BOLT - SWING	876004	2	2
26	BEARING 14*12*12	876035	2	2
27	WASHER SPRING M12	09599	2	2
28	NUT - M12 PLAIN	09454	2	2
29	PIN - PIVOT	876022	2	2
30	COUNTERWEIGHT	876009W	1	1
31	WASHER - PLAIN M10 HEAVY	ZWQ1J000U	4	4
32	WASHER - SPRING M10	09480	4	4
33	SCREW - SOC HD CAP M10*40	09718	4	4
34	'O' RING DIA 2.987"	876032	1	1
35	CIRCLIP INT DIA 52	63-07-008	2	2
36	BEARING 6205 J.C.3	63-07-036	2	2
37	SEAL SINGLE LIP 30*52*10	63-07-038	2	2
38	BEARING - CASTING	876007W	2	2
39	CYLINDER 4 BLADE 200MM DIA	876100	1	0
39	CYLINDER 6 BLADE 200MM DIA	877020	1	0
39	CYLINDER 8 BLADE 200MM DIA	878020	1	0
39	CYLINDER 10 BLADE 200MM DIA	879020	1	0
39	CYLINDER 4 BLADE 254MM DIA	883025	0	1
39	CYLINDER 6 BLADE 254MM DIA	884031	0	1
40	NUT - M10 BINX	ZNB1J000U	10	10
41	SCREW - DURLOC M10*16	63-11-019	10	10
42	BOTTOM BLADE 13MM 8 HOLE	876008	1	1
43	SCREW - SOC HD CSK' M10*25	09740	8	8
44	DECAL - HEIGHT OF CUT ADJUSTMENT	63-13-039	2	2
45	CIRCLIP EXT DIA 25MM	40-07-017	1	1
46	PLUG - MOTOR HOUSING 11357 (DISCARD IF SUPPLIED)	861808	1	1

**SPARE PARTS LIST Continued**

ITEM NO.	DESCRIPTION	PART NO.	QTY 200MM	QTY 254MM	ITEM NOTE
47	SKID - 200MM	876019W	2	0	
47	SKID - 254MM	884024W	0	2	
48	NUT - M10 NYLOC	ZNN1J000U	6	6	
49	WASHER - M10	09479	8	8	
50	MAINFRAME - 200MM	876033V	1	0	
50	MAINFRAME - 254MM	884007V	0	1	
50	MAINFRAME - 200MM (RED)	876033C	1	0	
50	MAINFRAME - 250MM (RED)	884007C	0	1	
51	NUT - M6 NYLOC	ZNN1F000U	2	2	
52	SETSCREW - M12*16	ZDH1L016U	2	2	
53	PIN - BEARING ADJUSTER	876069	2	2	
54	BRACKET GUARD LH	876052W	1	0	
54	BRACKET GUARD LH	884015W	0	1	
55	SCREW M6*6 HEX	09362	2	2	
56	BOLT CARRIAGE M10*35	09738	6	6	
57	BRACKET GUARD RH	876057W	1	0	
57	BRACKET GUARD RH	884016W	0	1	
58	WASHER - M16 SPRING	HY4200	4	0	
59	NUT - M12 BINX	ZNB1L000U	4	4	
60	WASHER - PLAIN M12	ZWP1L000U	4	4	
61	HEAD PIVOT PIN	65-05-120	1	0	
61	HEAD PIVOT PIN MK3 10"	65-05-127	0	1	
62	BUSH 30*34*20	876065	2	2	
63	WASHER - M16 PLAIN	09491	4	0	
64	BUSH 25*16*25	922500	2	0	
65	BOTTOM BLADE ASSY.	876060W	1	1	
66	FIXED PIVOT CASTING	922115W	1	0	
67	SETSCREW M16*50	ZDH1P050U	2	0	
68	SETSCREW - M16*30 HEX. HD	09598	2	0	
69	WASHER - M12 PLAIN	HY09485	2	2	
70	DECAL - WARNING HANDS & FEET	40-13-010	1	1	
71	BUSH DIA 6.3*9.7*7	340154	2	2	
72	SPACER *	953900W	1	1	*ON CENTRE HEAD ONLY
73	LABEL SERIAL NUMBER	VARIOUS			NOT SHOWN





Note:- Right hand version shown



## The Toro Total Coverage Guarantee

### A Limited Warranty

#### Conditions and Products Covered

The Toro® Company and its affiliate, Toro Warranty Company, pursuant to an agreement between them, jointly warrant your Toro Commercial product ("Product") to be free from defects in materials or workmanship for two years or 1500 operational hours\*, whichever occurs first. This warranty is applicable to all products with the exception of Aerators (refer to separate warranty statements for these products). Where a warrantable condition exists, we will repair the Product at no cost to you including diagnostics, labor, parts, and transportation. This warranty begins on the date the Product is delivered to the original retail purchaser.

\* Product equipped with an hour meter.

#### Instructions for Obtaining Warranty Service

You are responsible for notifying the Commercial Products Distributor or Authorized Commercial Products Dealer from whom you purchased the Product as soon as you believe a warrantable condition exists. If you need help locating a Commercial Products Distributor or Authorized Dealer, or if you have questions regarding your warranty rights or responsibilities, you may contact us at:

Commercial Products Service Department  
Toro Warranty Company  
8111 Lyndale Avenue South  
Bloomington, MN 55420-1196  
E-mail: commercial.warranty@toro.com

#### Owner Responsibilities

As the Product owner, you are responsible for required maintenance and adjustments stated in your Operator's Manual. Failure to perform required maintenance and adjustments can be grounds for disallowing a warranty claim.

#### Items and Conditions Not Covered

Not all product failures or malfunctions that occur during the warranty period are defects in materials or workmanship. This warranty does not cover the following:

- Product failures which result from the use of non-Toro replacement parts, or from installation and use of add-on, or modified non-Toro branded accessories and products. A separate warranty may be provided by the manufacturer of these items.
- Product failures which result from failure to perform recommended maintenance and/or adjustments. Failure to properly maintain your Toro product per the Recommended Maintenance listed in the *Operator's Manual* can result in claims for warranty being denied.
- Product failures which result from operating the Product in an abusive, negligent or reckless manner.
- Parts subject to consumption through use unless found to be defective. Examples of parts which are consumed, or used up, during normal Product operation include, but are not limited to, brakes pads and linings, clutch linings, blades, reels, bed knives, tines, spark plugs, castor wheels, tires, filters, belts, and certain sprayer components such as diaphragms, nozzles, and check valves, etc.

- Failures caused by outside influence. Items considered to be outside influence include, but are not limited to, weather, storage practices, contamination, use of unapproved coolants, lubricants, additives, fertilizers, water, or chemicals, etc.
- Normal noise, vibration, wear and tear, and deterioration.
- Normal "wear and tear" includes, but is not limited to, damage to seats due to wear or abrasion, worn painted surfaces, scratched decals or windows, etc.

#### Parts

Parts scheduled for replacement as required maintenance are warranted for the period of time up to the scheduled replacement time for that part. Parts replaced under this warranty are covered for the duration of the original product warranty and become the property of Toro. Toro will make the final decision whether to repair any existing part or assembly or replace it. Toro may use remanufactured parts for warranty repairs.

#### Note Regarding Deep Cycle Battery Warranty:

Deep cycle batteries have a specified total number of kilowatt-hours they can deliver during their lifetime. Operating, recharging, and maintenance techniques can extend or reduce total battery life. As the batteries in this product are consumed, the amount of useful work between charging intervals will slowly decrease until the battery is completely worn out. Replacement of worn out batteries, due to normal consumption, is the responsibility of the product owner. Battery replacement may be required during the normal product warranty period at owner's expense.

#### Maintenance is at Owner's Expense

Engine tune-up, lubrication cleaning and polishing, replacement of Items and Conditions Not Covered filters, coolant, and completing Recommended Maintenance are some of the normal services Toro products require that are at the owner's expense.

#### General Conditions

Repair by an Authorized Toro Distributor or Dealer is your sole remedy under this warranty.

**Neither The Toro Company nor Toro Warranty Company is liable for indirect, incidental or consequential damages in connection with the use of the Toro Products covered by this warranty, including any cost or expense of providing substitute equipment or service during reasonable periods of malfunction or non-use pending completion of repairs under this warranty. Except for the Emissions warranty referenced below, if applicable, there is no other express warranty.**

All implied warranties of merchantability and fitness for use are limited to the duration of this express warranty. Some states do not allow exclusions of incidental or consequential damages, or limitations on how long an implied warranty lasts, so the above exclusions and limitations may not apply to you.

This warranty gives you specific legal rights, and you may also have other rights which vary from state to state.

#### Countries Other than the United States or Canada

Customers should contact their Toro Distributor (Dealer) to obtain guarantee policies for your country, province, or state. If for any reason you are dissatisfied with your Distributor's service or have difficulty obtaining guarantee information, contact the Toro importer. If all other remedies fail, you may contact us at Toro Warranty Company.