



# Cargo Carrier

## TimeCutter® Series Riding Mower

Model No. 79030

Form No. 3377-665 Rev A

### Installation Instructions

**Note:** If you have a bagger, use the same weights from the bagger for the cargo carrier.

**Note:** If you do not have the weights from a bagger, obtain the correct weight kit from an Authorized Toro Dealer.

## Safety

### ⚠ DANGER

**Engines can become hot when they are operating. Severe burns can occur from contacting hot surfaces.**

**Allow engines, especially the muffler, to cool before touching.**

The following list contains safety information specific to Toro products and other safety information you must know.

- Become familiar with the safe operation of the equipment, with the operator controls, and safety signs.
- Use extra care with attachments. These can change the operating characteristics and the stability of the machine.
- Follow the manufacturer's recommendations for adding or removing wheel weights or counterweights to improve stability.
- Do not use the attachment on steep slopes. A heavy load could cause loss of control or overturn the machine.
- Slow down and use extra care on hillsides. Turf conditions can affect the machine's stability. Use extreme caution while operating near drop-offs.
- Keep all movement on slopes slow and gradual. Do not make sudden changes in speed, directions or turning.
- The attachment can obstruct the view to the rear. Use extra care when operating in reverse.
- Use care when loading or unloading the machine into a trailer or truck.
- Keep hands and feet away from moving parts. Do not make adjustments with the engine running.
- Stop on level ground, disengage drives, set the parking brake, shut off engine before leaving the operator's position for any reason including emptying the attachment.
- If you remove the attachment, remove the weights.
- Stop the engine before removing the attachment.
- Do not leave a load in the attachment for extended periods of time.
- Frequently check components and replace with manufacturer's recommended parts, when necessary.

## Safety and Instructional Decals



Safety decals and instructions are easily visible to the operator and are located near any area of potential danger. Replace any decal that is damaged or lost.



109-7076



127-0051

1. Maximum carrier frame load is less than or equal to 100 lbs (45 kg).
2. Warning—do not sit or ride on the carrier frame; read the *Operator's Manual*.



# Loose Parts

Use the chart below to verify that all parts have been shipped.

Description	Qty.	Use
Tray mount assembly	1	Install the carrier.
Tray	1	
Pin	1	
Support bracket	1	
Bolt (5/16 x 2-1/4)	2	
Flange nut (5/16 inch)	4	
Bolt (5/16 x 1 inch)	2	
Self tapping bolt (5/16 x 3/4 inch)	2	
Support rod	2	
Flat washer	2	
Hairpin cotter pin	2	

## Installing the Carrier

1. Install one bolt (5/16 x 1 inch) through the pin assembly clip.
2. Using the top 2 holes, install the tray mount assembly and pin assembly to the machine using 2 bolts (5/16 x 1 inch) and 2 locknuts (5/16 inch) (Figure 1).
3. Install the tray mount assembly to the bottom of the machine using 2 self tapping bolts (5/16 x 3/4 inch)(Figure 1).
4. Install the support bracket to the tray mount assembly with 2 bolts (3/8 x 2-1/4) and 2 locknuts (5/16 inch) (Figure 1).

5. Slide the end of the support rod, without the hole, into the key slot in the frame (Figure 2).
6. Install the other end of the support rod through the support bracket and secure with a flat washer and a hairpin cotter pin (Figure 2).
7. Repeat for the opposite side.

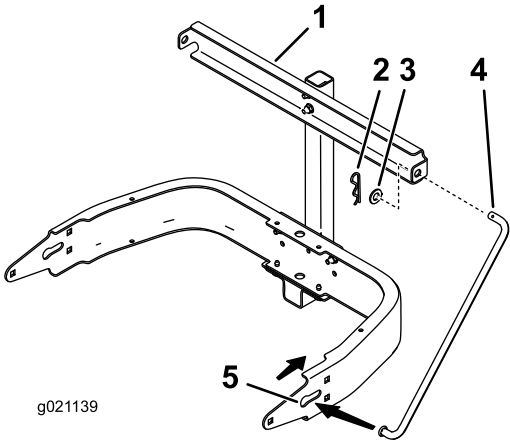


Figure 2

- |                       |                              |
|-----------------------|------------------------------|
| 1. Support bracket    | 4. Support rod               |
| 2. Hairpin cotter pin | 5. Key slot in machine frame |
| 3. Flat washer        |                              |

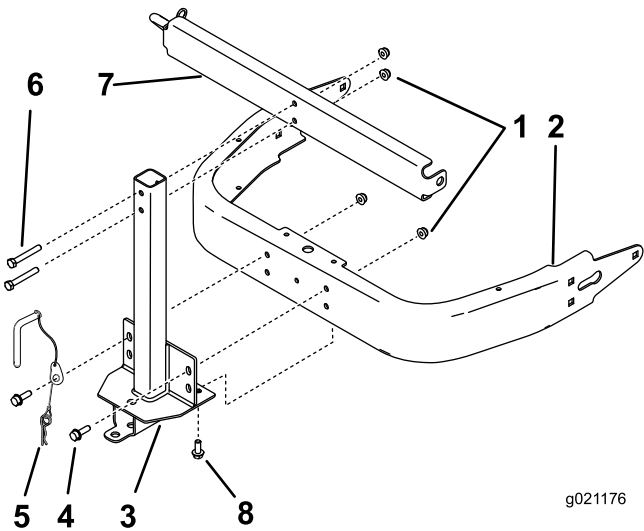
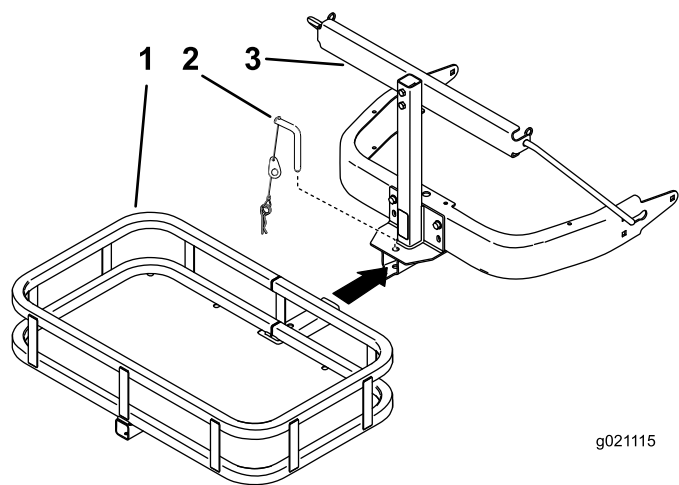


Figure 1

- |   |  |
|---|--|
| 1. Lock nut (5/16 inch)                       | 5. Pin assembly                        |
| 2. Machine frame                              | 6. Bolt (5/16 x 2-1/4 inch)            |
| 3. Tray mount assembly                        | 7. Support bracket                     |
| 4. Bolt (5/16 x 1 inch) (use the top 2 holes) | 8. Self tapping bolt (5/16 x 3/4 inch) |

8. Slide the tray into the tray mount assembly and align the holes. Secure it with the pin and hairpin cotter pin (Figure 3).



g021115

**Figure 3**

1. Tray mount assembly
  2. Pin and hairpin cotter pin
  3. Tray
-



**Count on it.**