



# Front Weight Kit

## TITAN Series Riding Mower

Model No. 79033

Form No. 3377-701 Rev A

### Installation Instructions

## Loose Parts

Use the chart below to verify that all parts have been shipped.

Description	Qty.	Use
Weight	2	Install the weight.
Adhesive bumper	2	
Rod	1	
Washer (5/16 inch)	4	
Hairpin cotter pin	2	

## Installing the Weight

### ⚠ CAUTION

The attachment changes the weight distribution of the machine. Operating the machine without the front weights may cause an unstable condition which could result in a loss of control.

Ensure the front weights are properly installed before operating the machine with the attachment.

1. For machines with a mower housing pan, remove the 2 nuts and bolts that secure the front of the mower housing pan to the machine (Figure 1). Ensure the pan is installed once the weights are secured.

**Note:** Save the nuts and bolts to secure the front of the mower housing pan later.

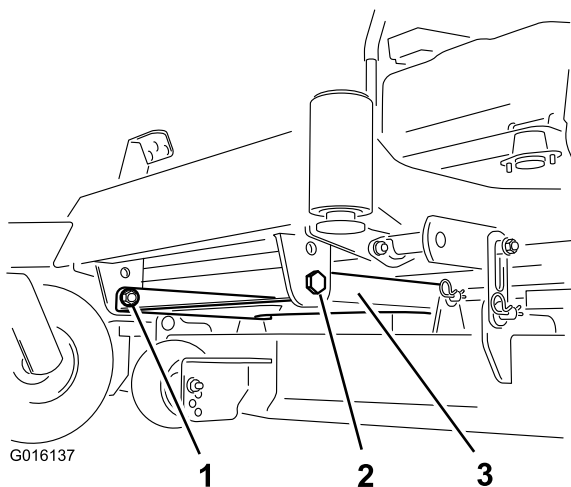


Figure 1

1. Nut
2. Bolt
3. Mower housing pan

2. Install an adhesive bumper to the weight (Figure 2).

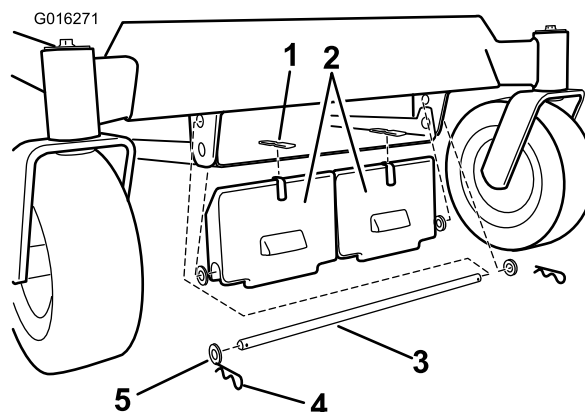


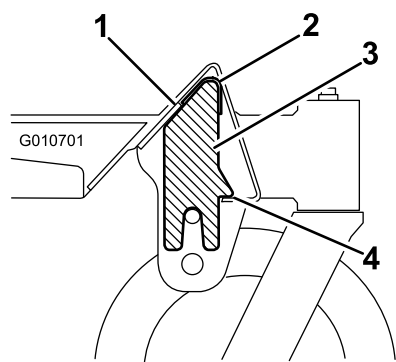
Figure 2

1. Adhesive bumper
2. Front weight
3. Rod
4. Hair pin
5. Washer

3. Install the weights to the front of the machine frame. Secure the weights with a rod, four washers, and two hairpins as shown in Figure 2.



**Note:** When installing the front weight allow it to rest on the front lip of the underside of the machine frame as shown [Figure 3](#). This will suspend the weight while you secure it to the machine. Use care not to dislodge the weight when installing the supporting rod.



**Figure 3**

- |  |  |
|--|--|
| 1. Cutaway of the front of the machine frame | 3. Weight                              |
| 2. Bumper                                    | 4. Rest the weight here during install |

---

**Important:** Whenever you remove the attachment, remember to remove the front weight to return the proper stability to the machine.

4. For machines with a mower housing pan, install the mower housing pan to the machine ([Figure 1](#)).