



Count on it.

Parts Catalog

60in Side Discharge Mower
Groundsmaster® 7200 Series Traction Unit
Model No. 30456—Serial No. 312000001 and Up



Ordering Replacement Parts

To order replacement parts, please supply the part number, the quantity, and the description of each part desired.

Understanding Reference Numbers

Each identified part in an illustration has a reference number. The reference number for a part also appears in the parts list, along with other information about the part.

This catalog uses two special reference number formats, one to indicate parts in a service assembly and another to indicate the quantity of a given part in an illustration.

Service Assembly Reference Numbers

Parts in service assemblies have reference numbers in the form a:b. The a represents the reference number of the entire service assembly and the b represents a sequential number unique to each part within the service assembly.

For example, a wheel assembly might be identified by reference number 6, the tire by 6:1, the valve by 6:2, and the wheel by 6:3. When you order the assembly identified by reference number 6, you receive all parts identified by reference numbers 6:1, 6:2, and 6:3. However, you may also order any part individually. Reference numbers of this type appear in illustration and in parts lists.

Reference Numbers Indicating Quantity

In an illustration, if a reference number indicates more than one part, the reference number has the form nX y. The n represents the quantity of the part, the X is the multiplication symbol, and the y represents the reference number.

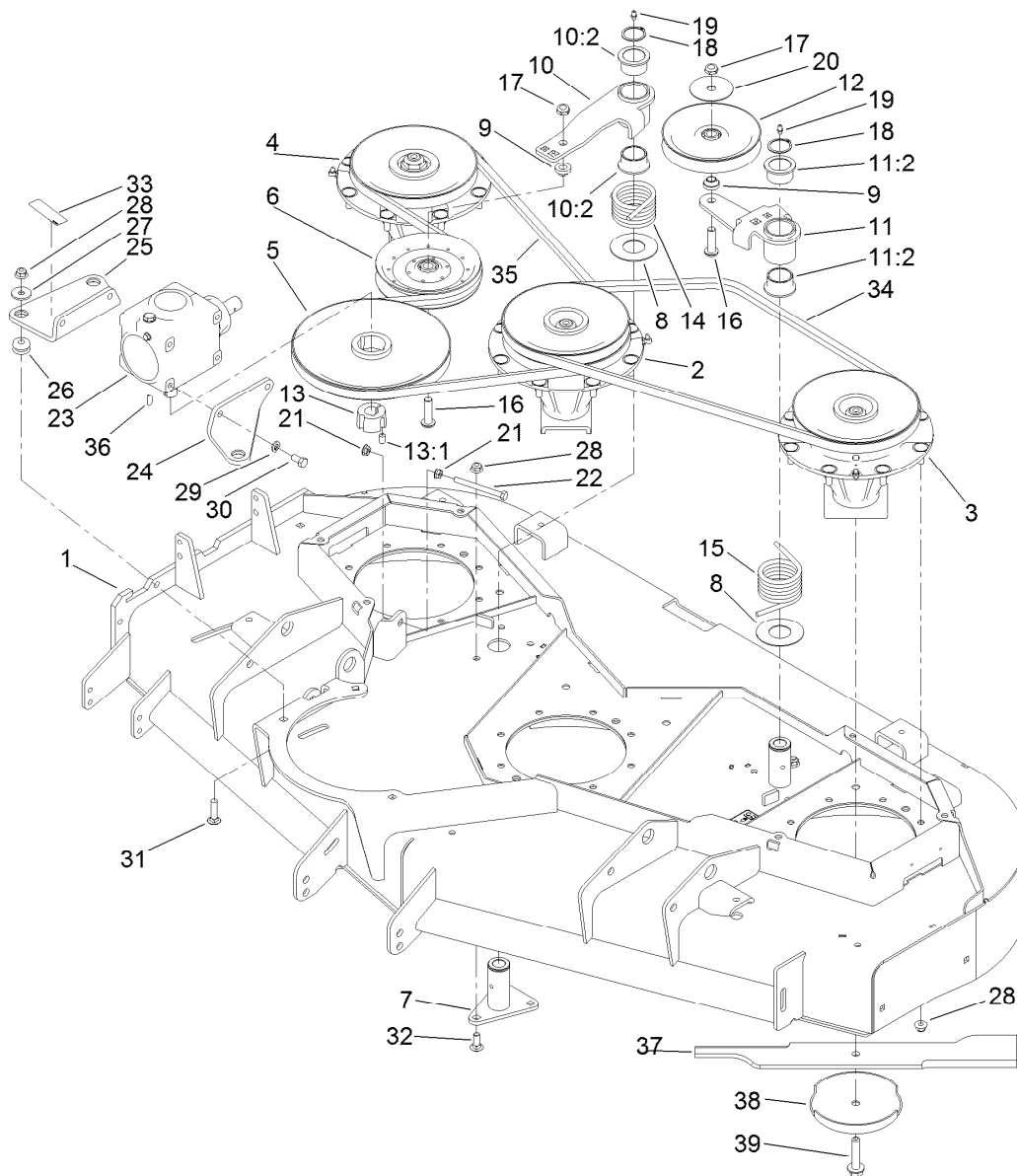
For example, in an illustration, the reference number 2X 37 means that two of the parts identified by reference number 37 are indicated.

List of Abbreviations

AR: as required	HLH: hex lag head	PTO: power-take-off
ASM: assembly	HOC: height-of-cut	RH: right hand
BBC: blade brake control	HSBH: hex socket button head	ROPS: roll-over protection system
BHTF: button head thread forming	HSFH: hex socket flat head	RRB: rear roller brush
CARR: carriage	HSH: hex socket head	SFH: slotted fillister head
CCW: counter clockwise	HWH: hex washer head	SHH: slotted hex head
CW: clockwise	HWHTF: hex washer head thread forming	SHWH: slotted hex washer head
DEG: degrees	HYD: hydraulic	SPH: slotted pan head
DPA: Dual Point Adjustment	LH: left hand	SQH: square head
ECM: electronic control module	LP: Liquefied Petroleum Gas	SRH: slotted round head
EXT: external	LPG: Liquefied Petroleum Gas	STD: standard
FH: flat head	NI: nylon insert	TAP: self tapping
GA: gauge	NPTF: national pipe thread fine	TTH: torx truss head
HD: heavy-duty	PFH: phillips flat head	
HF: hex flange	PPH: phillips pan head	
HH: hex head	PPHTF: phillips pan head thread forming	
HHF: hex head flange	PRH: phillips round head	
HHFTF: hex head flange thread forming	PTH: phillips truss head	
HJ: hex jam		

Contents

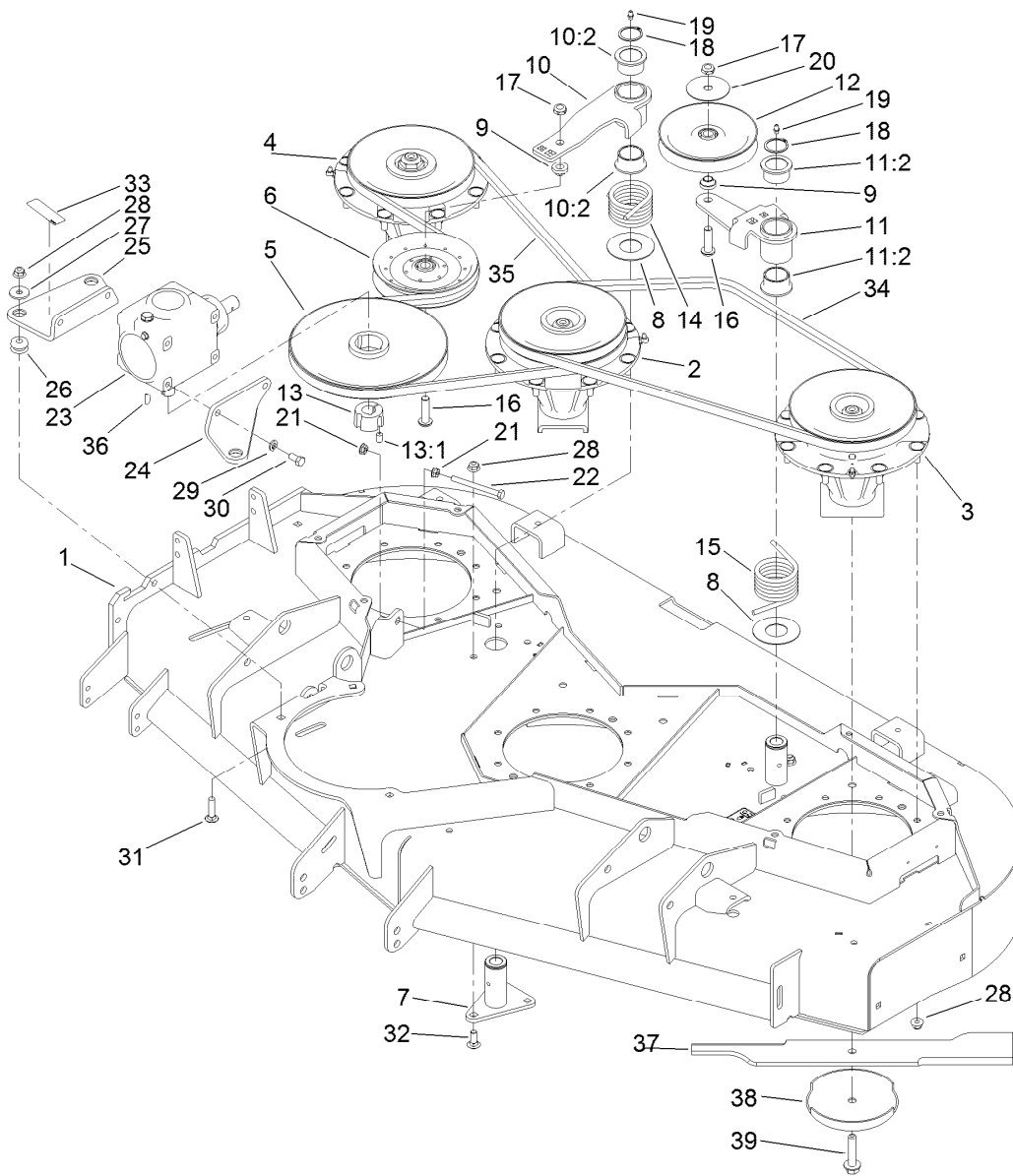
Spindle, Belt and Pulley Assembly	4
Deck and Decal Assembly No. 115-1371	6
Double Driven Spindle Assembly No. 117-9234	7
High Spindle Assembly No. 117-9233	8
Spindle Assembly No. 119-4778	9
Gearbox Assembly No. 117-9245-03	10
Deck Baffle and Roller Assembly	11
Deck Cover Assembly	12
Rubber Deflector Assembly No. 108-2792	13



Spindle, Belt and Pulley Assembly

Ref.	Part Number	Qty.	Description	Ref.	Part Number	Qty.	Description
1	115-1371	1	Deck ASM	16	108-1993	2	Screw-HSBH
2	117-9234	1	Double Spindle ASM	17	3296-45	2	Nut-Lock, NI
3	117-9233	1	High Spindle ASM	18	32120-84	2	Ring-Snap, External
4	119-4778	1	Spindle ASM	19	302-5	2	Fitting-Grease
5	108-1952	1	Pulley	20	100-3102	1	Washer-Flat
6	110-9596	1	Pulley-Idler	21	32128-26	2	Nut-Flange
7	115-1387	2	Idler Post ASM	22	322-22	1	Screw-HH
8	108-1926	2	Washer	23	117-9245-03	1	Gearbox ASM
9	108-1924	2	Spacer-Idler	24	115-1388-03	1	Mount-Gearbox, LH
10	108-1930	1	Idler Arm ASM	25	115-1389-03	1	Mount-Gearbox, RH
10:2	93-4510	2	Bushing-Caster	26	63-9750	3	Mount
11	117-9176	1	Idler Arm ASM	27	63-8410	3	Washer
11:2	93-4510	2	Bushing-Caster	28	104-8301	33	Nut-Flange, NI
12	01-268-0160	1	Pulley-Idler	29	3253-21	4	Washer-Lock
13	23-1640	1	Bushing-Taperlock	30	323-4	4	Screw-HH
13:1	3247-4	2	Screw-Set	31	3231-26	3	Screw-CARR
14	108-1921	1	Spring-Torsion	32	3231-2	6	Bolt-CARR
15	112-7395	1	Spring-Torsion	33	93-6697	1	Decal-Lube

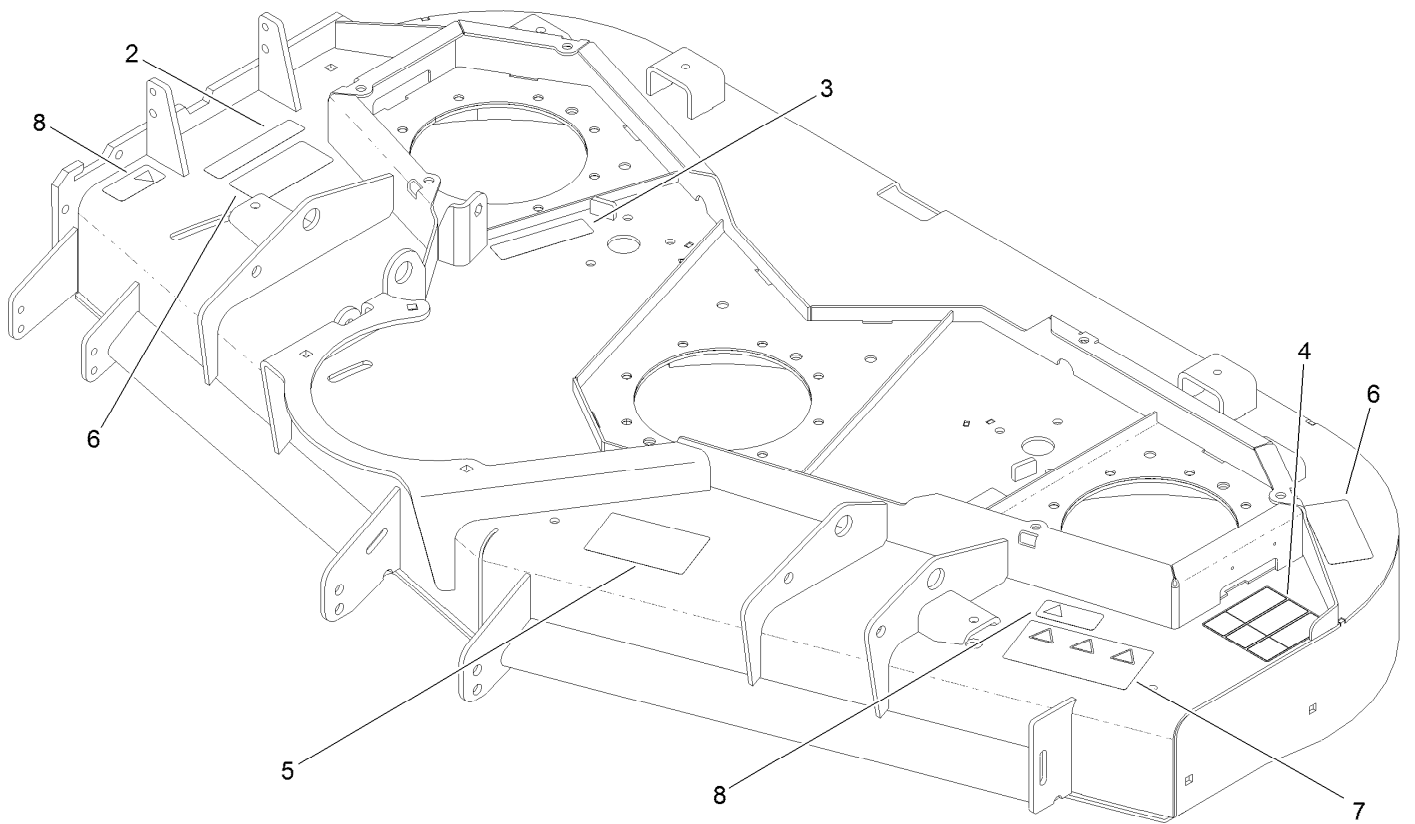
● Optional Equipment



Spindle, Belt and Pulley Assembly (continued)

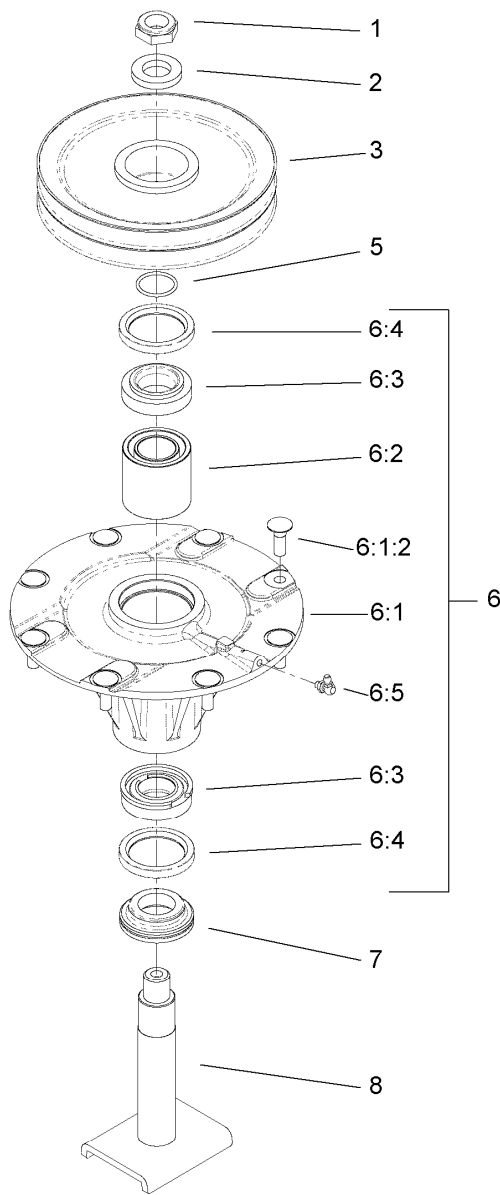
Ref.	Part Number	Qty.	Description	Ref.	Part Number	Qty.	Description
34	67-6920	1	V-Belt	37	110-4703-03	3	Blade-Rotary, Atomic (20.5)
35	105-0887	1	Belt-Drive, PTO	38	72-9361	3	Cup-Scalp, Anti
36	3257-5	1	Key-Woodruff	39	92-5816	3	Bolt-Blade
37	110-4701	3	Blade-Rotary, Standard (20.5)				
37	110-4702-03	3	Blade-Rotary, High Flow (20.5) ●				

● Optional Equipment



Deck and Decal Assembly No. 115-1371

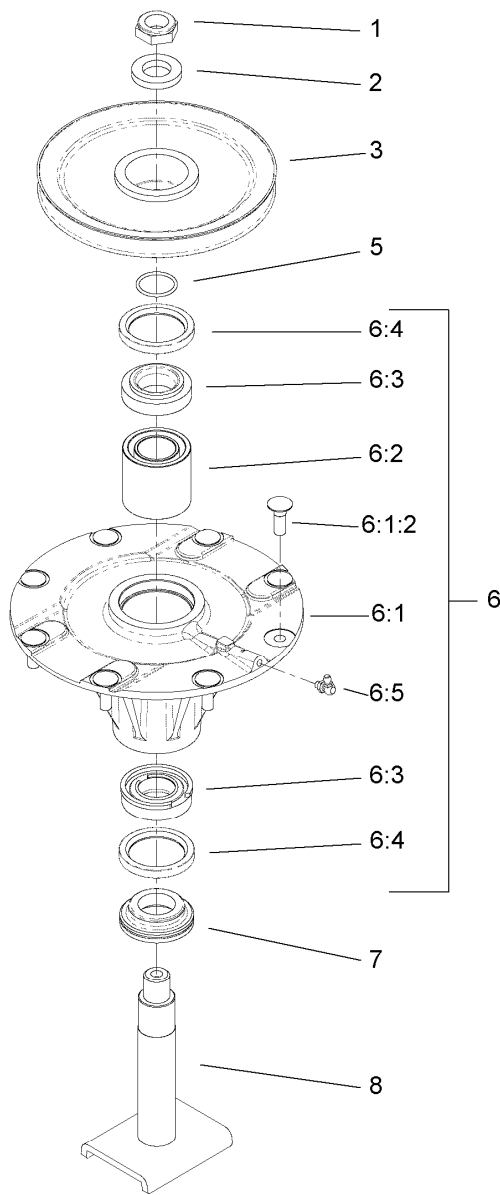
<i>Ref.</i>	<i>Part Number</i>	<i>Qty.</i>	<i>Description</i>
2	107-2916	1	Decal-Warning
3	117-4979	2	Decal-Warning, Shields
4	120-6604	1	Decal-Danger
5	108-1990	1	Decal
6	93-7818	2	Decal-Torque, Blade Bolt
7	107-2908	1	Decal-Danger, Combination
8	93-6696	2	Decal-Warning



Double Driven Spindle Assembly No. 117-9234

Ref.	Part Number	Qty.	Description
1	3296-60	1	Nut-Lock, NI
2	104-8322	1	Washer-Hardened
3	104-3547	1	Pulley-Driven, Double
5	106-7159	1	O-Ring
6	119-4777	1	Spindle ASM
6:1		1	Spindle Assembly ●
6:1:2	114-8195	8	Bolt-Ribbed Neck
6:2	108-1954	1	Spacer Set-Bearing
6:3	110-8297	1	Bearing ASM
6:4	253-154	2	Seal-Oil
6:5	302-60	1	Fitting-Grease
7	69-6950	1	Spacer-Shaft, Spindle
8	108-1956	1	Shaft ASM

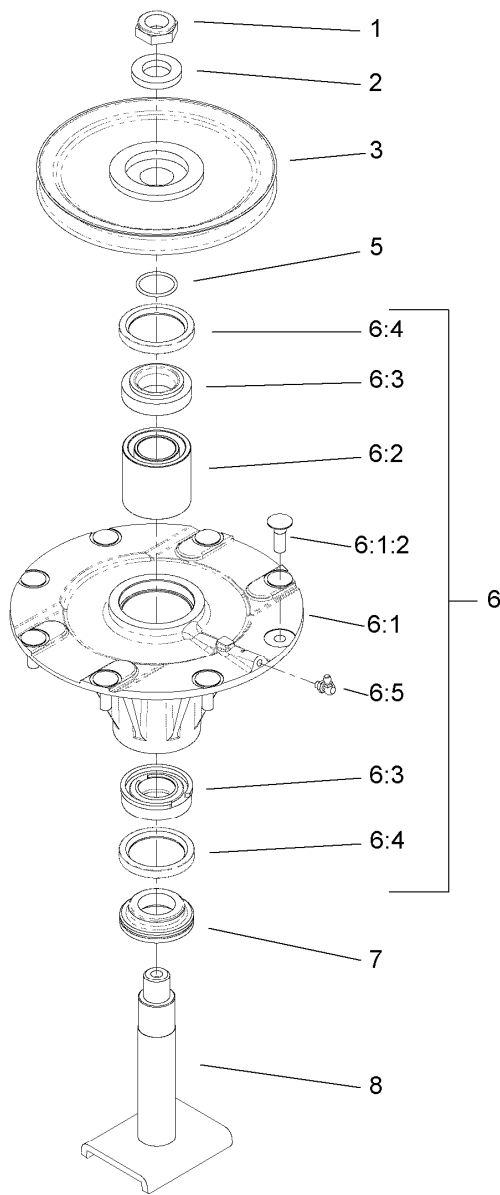
● Not serviced separately



High Spindle Assembly No. 117-9233

Ref.	Part Number	Qty.	Description
1	3296-60	1	Nut-Lock, NI
2	104-8322	1	Washer-Hardened
3	104-3548	1	Pulley-Driven, High
5	106-7159	1	O-Ring
6	119-4777	1	Spindle ASM
6:1		1	Spindle Assembly ●
6:1:2	114-8195	8	Bolt-Ribbed Neck
6:2	108-1954	1	Spacer Set-Bearing
6:3	110-8297	1	Bearing ASM
6:4	253-154	2	Seal-Oil
6:5	302-60	1	Fitting-Grease
7	69-6950	1	Spacer-Shaft, Spindle
8	108-1956	1	Shaft ASM

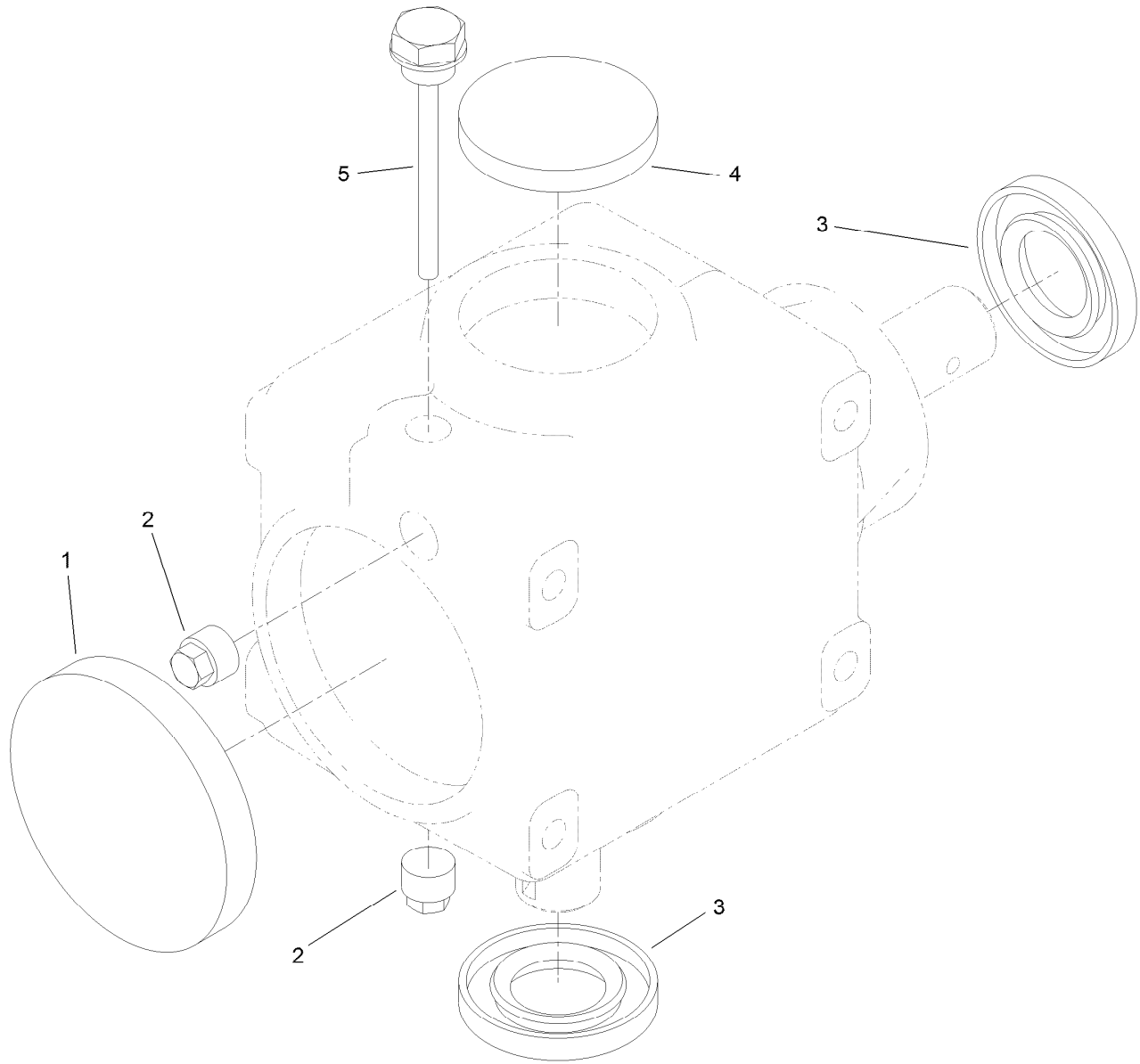
● Not serviced separately



Spindle Assembly No. 119-4778

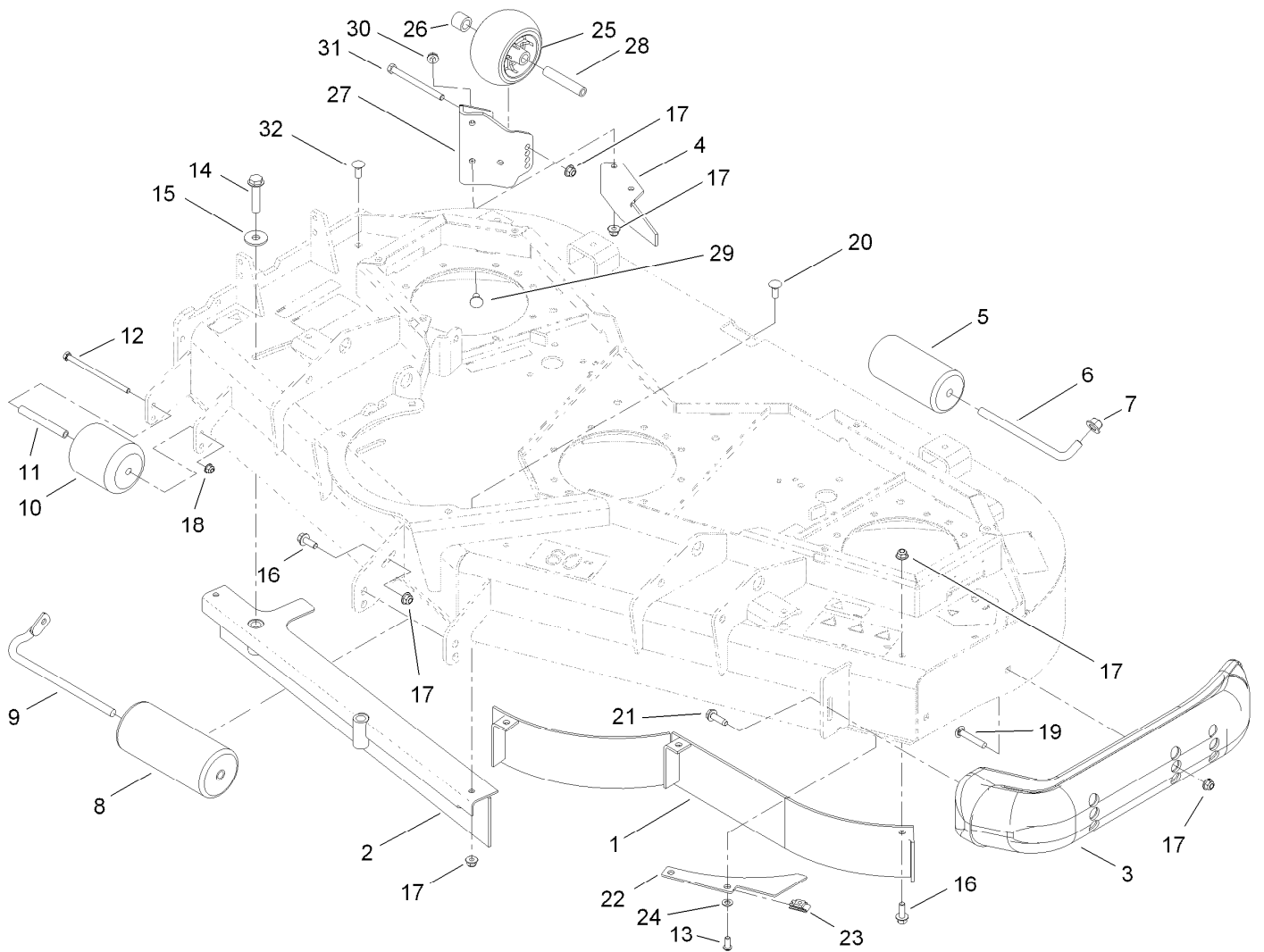
Ref.	Part Number	Qty.	Description
1	3296-60	1	Nut-Lock, NI
2	104-8322	1	Washer-Hardened
3	104-3546	1	Pulley-Driven, Low
5	106-7159	1	O-Ring
6	119-4777	1	Spindle ASM
6:1		1	Spindle Assembly ●
6:1:2	114-8195	8	Bolt-Ribbed Neck
6:2	108-1954	1	Spacer Set-Bearing
6:3	110-8297	1	Bearing ASM
6:4	253-154	2	Seal-Oil
6:5	302-60	1	Fitting-Grease
7	69-6950	1	Spacer-Shaft, Spindle
8	108-1956	1	Shaft ASM

● Not serviced separately



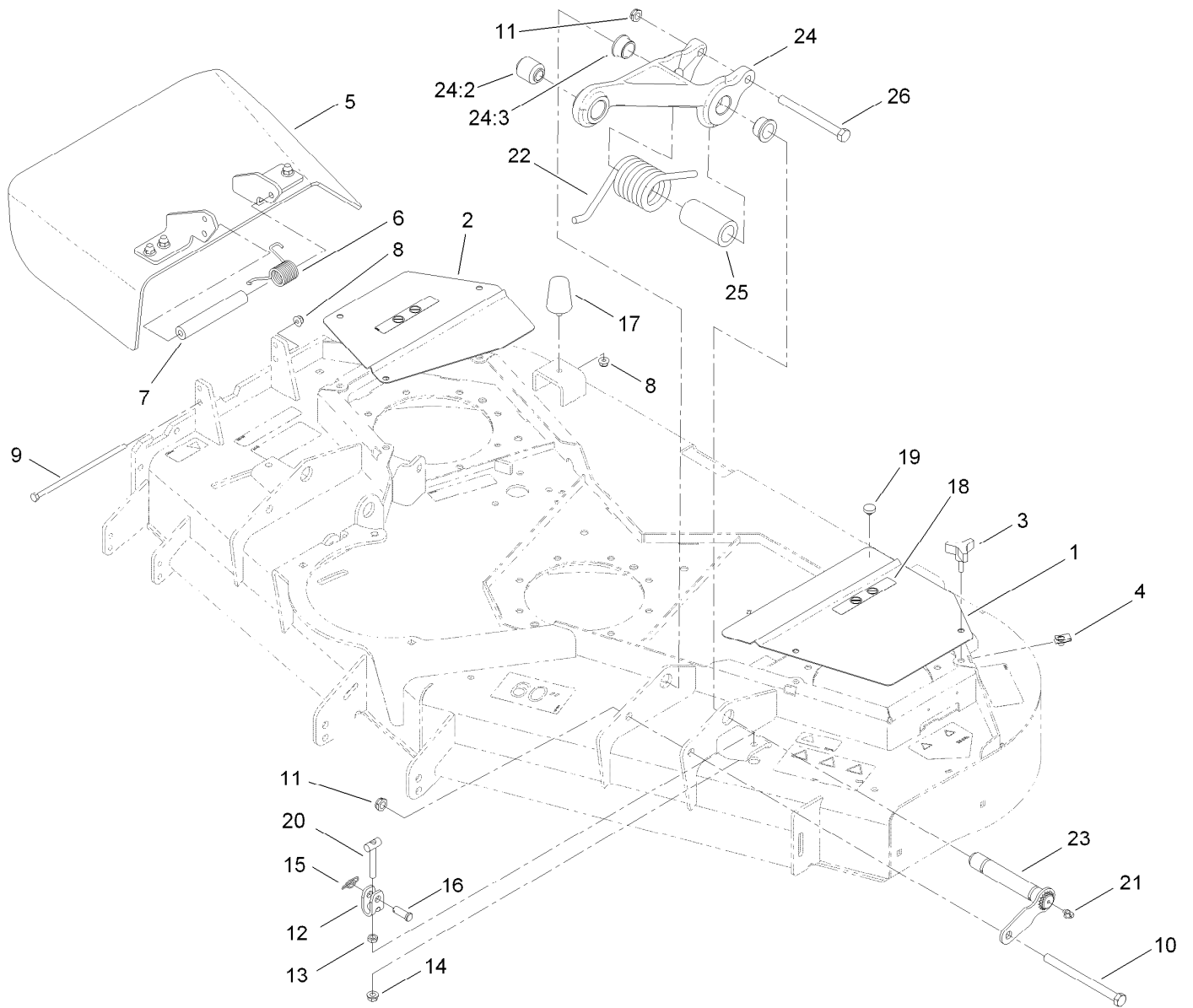
Gearbox Assembly No. 117-9245-03

<i>Ref.</i>	<i>Part Number</i>	<i>Qty.</i>	<i>Description</i>
1	107-2932	1	Cap-Oil
2	107-2933	2	Plug
3	117-9247	2	Seal
4	107-2935	1	Cap-Oil
5	110-8283	1	Plug-Filler, Dipstick



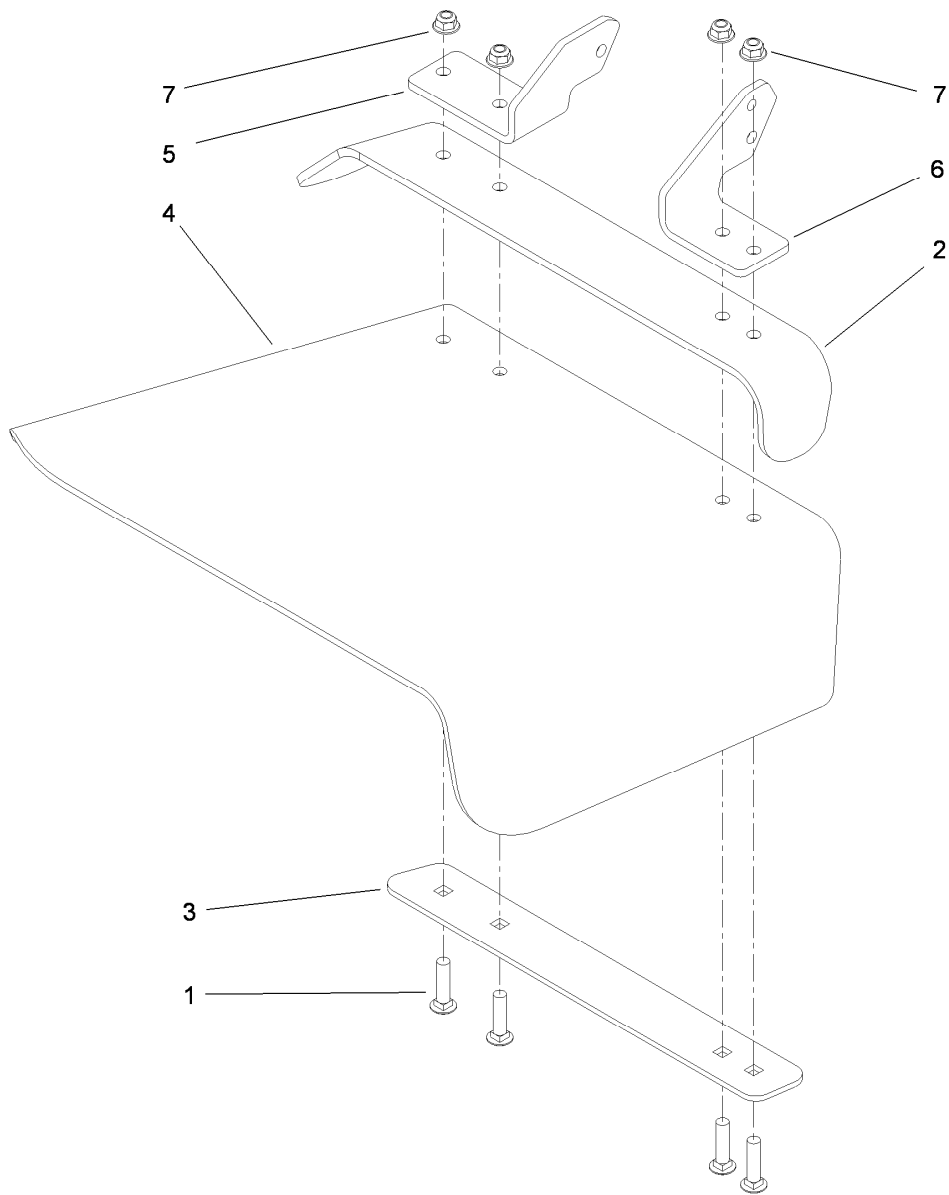
Deck Baffle and Roller Assembly

Ref.	Part Number	Qty.	Description	Ref.	Part Number	Qty.	Description
1	105-7657-01	1	Baffle	17	104-8301	10	Nut-Flange, NI
2	105-7669-01	1	Baffle	18	104-8300	1	Nut-Flange, NI
3	112-1479	1	Skid-Bumper, Deck	19	3231-33	2	Screw-CARR
4	106-3216-01	1	Baffle-Discharge	20	3231-2	1	Bolt-CARR
5	36-1740	2	Roller-Deck	21	9136144	1	Screw-HWHTF
6	110-9683	2	Shaft-Rear Roller	22	115-1421	1	Plate-Turbo
7	99-5107	2	Nut-Lock	23	112-3306	2	Nut
8	68-6710	1	Roller	24	3256-23	2	Washer-Flat
9	68-6840	1	Shaft-Roller	25	1-603299	1	Roller-Scalp, Anti
10	93-4803	1	Roller-Deck	26	98-7913	1	Tube-Spacer
11	105-4549	1	Spacer-Roller	27	106-7355-01	1	Mount-Wheel, RH
12	322-49	1	Bolt-HH	28	98-7912	1	Tube-Spanner
13	3274-104	2	Screw-HSBH	29	3231-1	3	Screw-CARR
14	3234-46	2	Screw-HHF	30	3290-357	3	Nut-HHF, Whiz
15	105-7697	2	Washer-Plastic	31	323-23	1	Screw-HH
16	3234-42	4	Screw-HHF	32	3231-2	2	Bolt-CARR



Deck Cover Assembly

Ref.	Part Number	Qty.	Description	Ref.	Part Number	Qty.	Description
1	117-5525-03	1	Cover-Deck, LH	15	112-1491	4	Pin-Cotter
2	115-1394-03	1	Cover-Deck, RH	16	700601	4	Pin-Clevis
3	106-2240	5	Knob	17	110-5070	2	Bumper
4	112-3306	5	Nut	18	93-6687	2	Decal-No Step
5	108-2792	1	Rubber Deflector ASM	19	1-513658	1	Bumper
6	108-4052	1	Spring-Torsion	20	115-1431	4	T-Bar ASM
7	105-4622	1	Spacer	21	302-60	4	Fitting-Grease
8	104-8300	3	Nut-Flange, NI	22	112-9520	2	Spring-Torsion
9	112-9557	1	Screw-HH	23	112-1622	2	Pin
10	325-33	2	Screw-HH	24	112-1625	2	Pull Link ASM
11	3296-45	4	Nut-Lock, NI	24:2	107-2328	1	Bushing
12	115-1429	4	Yoke-Clevis	24:3	114-5680	2	Bushing-Flange
13	3218-3	4	Nut-Jam	25	110-9845	2	Spacer-Plain
14	3290-357	4	Nut-HHF, Whiz	26	325-22	2	Screw-HH



Rubber Deflector Assembly No. 108-2792

<i>Ref.</i>	<i>Part Number</i>	<i>Qty.</i>	<i>Description</i>
1	3231-4	4	Screw-CARR
2	106-3246-01	1	Deflector
3	106-3248-03	1	Strap-Discharge
4	108-5029	1	Deflector-Rubber
5	108-4059-01	1	Plate-Hinge, Rear
6	106-3253-01	1	Plate-Hinge, Front
7	104-8301	4	Nut-Flange, NI

Notes:

Notes:



Count on it.