



**Count on it.**

Form No. 3362-877 Rev B

# Parts Catalog

## Bore Drive Attachment

### TRX Trencher

Model No. 22978—Serial No. 310000001 and Up



# Ordering Replacement Parts

To order replacement parts, please supply the part number, the quantity, and the description of each part desired.

## Understanding Reference Numbers

Each identified part in an illustration has a reference number. The reference number for a part also appears in the parts list, along with other information about the part.

This catalog uses two special reference number formats, one to indicate parts in a service assembly and another to indicate the quantity of a given part in an illustration.

## Service Assembly Reference Numbers

Parts in service assemblies have reference numbers in the form a:b. The a represents the reference number of the entire service assembly and the b represents a sequential number unique to each part within the service assembly.

For example, a wheel assembly might be identified by reference number 6, the tire by 6:1, the valve by 6:2, and the wheel by 6:3. When you order the assembly identified by reference number 6, you receive all parts identified by reference numbers 6:1, 6:2, and 6:3. However, you may also order any part individually. Reference numbers of this type appear in illustration and in parts lists.

## Reference Numbers Indicating Quantity

In an illustration, if a reference number indicates more than one part, the reference number has the form nX y. The n represents the quantity of the part, the X is the multiplication symbol, and the y represents the reference number.

For example, in an illustration, the reference number 2X 37 means that two of the parts identified by reference number 37 are indicated.

# List of Abbreviations

**AR:** as required

**ASM:** assembly

**BBC:** blade brake control

**BHTF:** button head thread forming

**CARR:** carriage

**CCW:** counter clockwise

**CW:** clockwise

**DEG:** degrees

**DPA:** Dual Point Adjustment

**ECM:** electronic control module

**EXT:** external

**FH:** flat head

**GA:** gauge

**HD:** heavy-duty

**HF:** hex flange

**HH:** hex head

**HHF:** hex head flange

**HHFTF:** hex head flange thread forming

**HJ:** hex jam

**HLH:** hex lag head

**HOC:** height-of-cut

**HSBH:** hex socket button head

**HSFH:** hex socket flat head

**HSH:** hex socket head

**HWH:** hex washer head

**HWHTF:** hex washer head thread forming

**HYD:** hydraulic

**LH:** left hand

**LP:** Liquefied Petroleum Gas

**LPG:** Liquefied Petroleum Gas

**NI:** nylon insert

**NPTF:** national pipe thread fine

**PFH:** phillips flat head

**PPH:** phillips pan head

**PPHTF:** phillips pan head thread forming

**PRH:** phillips round head

**PTH:** phillips truss head

**PTO:** power-take-off

**RH:** right hand

**ROPS:** roll-over protection system

**RRB:** rear roller brush

**SFH:** slotted fillister head

**SHH:** slotted hex head

**SHWH:** slotted hex washer head

**SPH:** slotted pan head

**SQH:** square head

**SRH:** slotted round head

**STD:** standard

**TAP:** self tapping

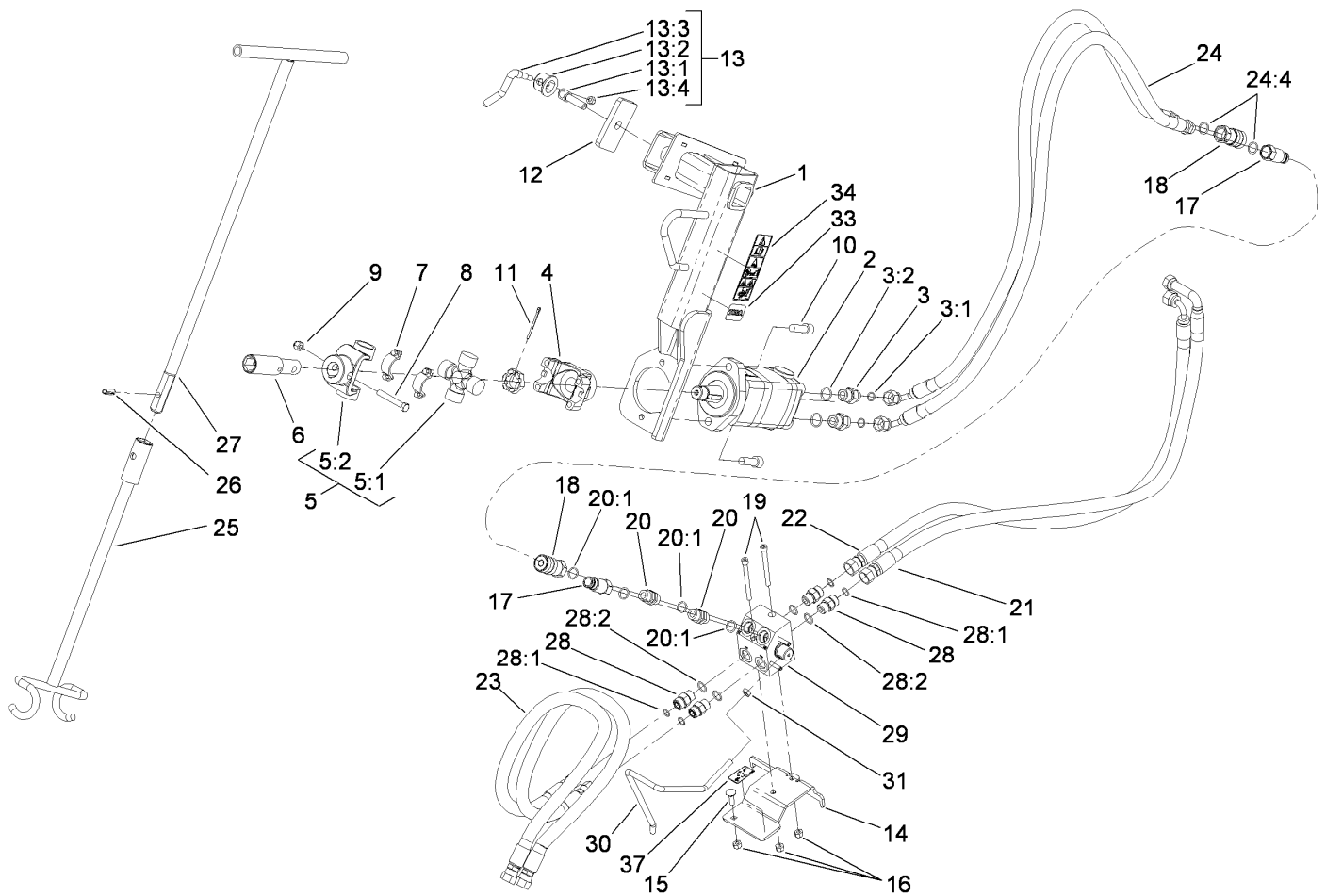
**TTH:** torx truss head

# Contents

Bore Drive Assembly ..... 4

Hydraulic Motor Assembly No. 117-4037 ..... 5

Attachments and Accessories ..... 6

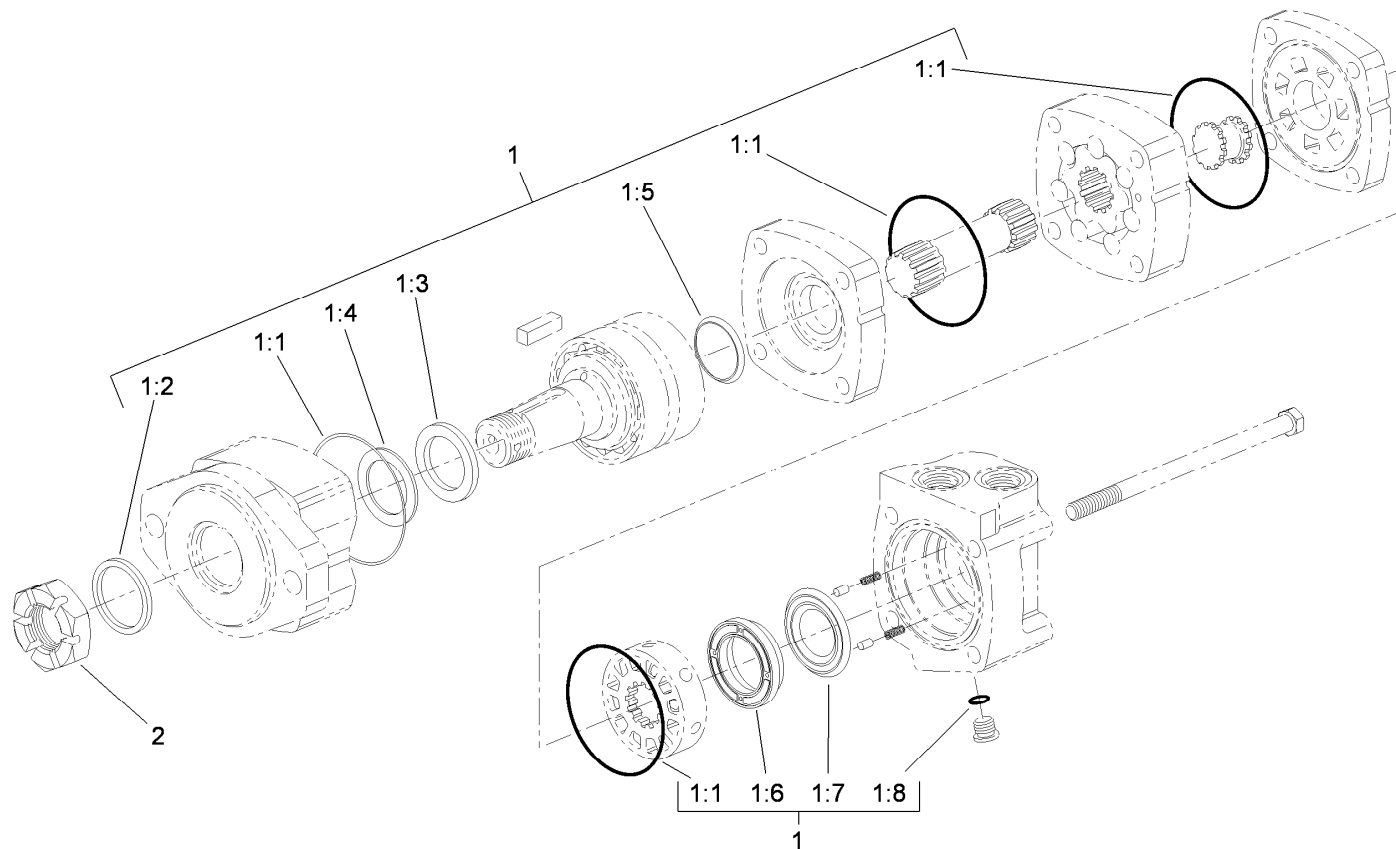


## Bore Drive Assembly

Ref.	Part Number	Qty.	Description
1	117-4019-03	1	Bore ASM
2	117-4037	1	Motor-HYD
3	340-6	2	Fitting-HYD, Straight
3:1	237-30	1	O-Ring
3:2	237-80	1	O-Ring
4	104-5917	1	Yoke-U-Bolt
5	104-5989	1	Yoke ASM
5:1	99-4300	1	U-Joint
5:2	104-6105	1	Yoke-U-Joint
6	115-3897	1	Coupler
7	104-5995	2	Bearing Strap Kit
8	323-47	1	Screw-HH
9	3296-39	1	Nut-Lock, NI
10	3274-4	2	Screw-HSH
11	3272-15	1	Pin-Cotter
12	117-4017-03	1	Plate-Clamp
13	107-1664	1	Lever ASM
13:1	106-3239	1	Screw-Lock
13:2	107-1644	1	Cap-Lock
13:3	106-3241	1	Lever-Lock
13:4	3296-29	1	Nut-Lock, NI
14	117-4049-01	1	Plate-Manifold
15	3230-2	1	Bolt-CARR
16	3296-29	3	Nut-Lock, NI

Ref.	Part Number	Qty.	Description
17	104-6114	2	Nipple-Connector
17:1	107-9301	1	Seal Kit ●
18	104-6115	2	Coupler-Female
19	117-9935	2	Screw-HSH
20	95-3209	2	Fitting-Thread, Straight
20:1	237-79	2	O-Ring
21	117-9936	1	HYD Hose ASM
22	117-9937	1	HYD Hose ASM
23	117-9938	2	HYD Hose ASM
24	117-9939	2	HYD Hose ASM
24:4	237-79	1	O-Ring
25	104-5988-03	1	Tool-Guide, Rod
26	32121-41	1	Pin-Roll
27	106-7740-03	1	Handle-Tool, Guide
28	340-4	4	Fitting-HYD, Straight
28:1	237-30	1	O-Ring
28:2	237-79	1	O-Ring
29	117-9909	1	HYD Manifold ASM
30	117-9934	1	Handle-Manifold
31	3218-3	1	Nut-Jam
33	95-7896	1	Decal
34	117-9952	1	Decal-Danger
37	117-8855	1	Decal-Instructional

● Not illustrated



## Hydraulic Motor Assembly No. 117-4037

Ref.	Part Number	Qty.	Description
1	56-6890	1	Seal Kit
1:1		4	Ring-Retaining ●
1:2		1	Seal-Exclusion, Shaft ●
1:3		1	Seal-Shaft ●
1:4		1	Ring-Back-Up ●
1:5		1	Seal-Face, Shaft ●
1:6		1	Seal-Face, Inner ●
1:7		1	Seal-Face, Outer ●
1:8		1	Ring-Retaining ●
2	99-3139	1	Nut

● Not serviced separately

# Attachments and Accessories

## For 22978 Bore Drive Attachment TRX Trencher

Product Name	Model/Part
Rod And Reamer .....	22421

**Notes:**



**Count on it.**