



Z Stand® Kit
Z Master® Riding Mower with 72in Deck
 Model No. 117-0354
 Model No. 121-4811
 Model No. 78584

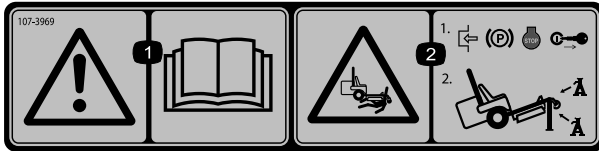
Installation Instructions

Safety

Safety and Instructional Decals



Safety decals and instructions are easily visible to the operator and are located near any area of potential danger. Replace any decal that is damaged or lost.



107-3969

1. Warning—read the *Operator's Manual*.
2. Crushing hazard, mower—engage the parking brake, stop the engine, and remove the ignition key before working under the mower.



Installation

Loose Parts

Use the chart below to verify that all parts have been shipped.

Procedure	Description	Qty.	Use
1	Z Stand hub	1	Assemble the Z Stand Hub
	Latch bracket	1	
	Bolt (3/8 x 1-1/2 inches)	1	
	Flange nut (3/8 inch)	1	
2	Carriage bolt (3/8 x 1-1/4 inches) (48,52 and 60 inch machines)	4	Install the Z Stand Hub
	Flange nut (3/8 inch) (48, 52 and 60 inch machines)	4	
	Carriage bolt (3/8 x 1-1/4 inches) (72 inch machines)	6	
	Flange nut (3/8 inch) (72 inch machines)	6	
	Bracket	1	
	Angle bracket (72 inch machines)	1	
3	Carriage bolt (3/8 x 1-1/4 inches)	2	Install the Z Stand Bracket
	Flange nut (3/8 inch)	2	
	Bolt (1/4 x 3/4 inches)	1	
	Locknut (1/4 inch)	1	
	Bracket pin	1	
	Lanyard	1	
	Cradle bracket	1	
4	Pivot pin	1	Install the Z Stand
	Outer tube	1	
	Foot	1	
	Clevis pin	2	
	Hairpin cotter pin	2	
	Thrust washer	2	
	Lynch pin	1	
5	Foot pedal	1	Install the lift assist foot pedal (Machines with 48, 52 and 60 inch mower decks).

1

Assembling the Z Stand® Hub

Parts needed for this procedure:

1	Z Stand hub
1	Latch bracket
1	Bolt (3/8 x 1-1/2 inches)
1	Flange nut (3/8 inch)

Procedure

1. Park on a level surface, disengage the PTO, set the parking brake, remove the key and chock or block the drive wheels.
2. Turn off the engine, remove the key, and wait for all moving parts to stop before leaving the operating position.
3. Install the bracket latch to the Z Stand hub with a bolt (3/8 x 1-1/2 inches) and a flange nut (3/8 inch) (Figure 1).
4. Tighten the nut and bolt. Then, unscrew it one full turn or until the latch will freely rotate (Figure 1).

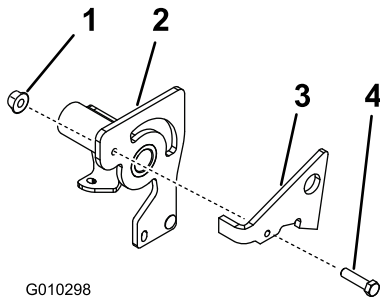


Figure 1

48, 52 and 60 inch shown

- | | |
|--------------------------|------------------------------|
| 1. Flange nut (3/8 inch) | 3. Bracket latch |
| 2. Z Stand hub | 4. Bolt (3/8 x 1-1/2 inches) |

2

Installing the Z Stand Hub

Parts needed for this procedure:

4	Carriage bolt (3/8 x 1-1/4 inches) (48,52 and 60 inch machines)
4	Flange nut (3/8 inch) (48, 52 and 60 inch machines)
6	Carriage bolt (3/8 x 1-1/4 inches) (72 inch machines)
6	Flange nut (3/8 inch) (72 inch machines)
1	Bracket
1	Angle bracket (72 inch machines)

Procedure

1. Place the Z Stand hub on the right front frame as shown in Figure 2.
2. For 48, 52 and 60 inch mowers, install the Z Stand hub to the frame with the bottom bracket, 4 carriage bolts (3/8 x 1-1/4 inches) and 4 flange nuts (3/8 inch) (Figure 2).
3. For 72 inch mowers, install the Z Stand hub to the frame with the bottom bracket, the angle bracket, 6 carriage bolts (3/8 x 1-1/4 inches) and 6 flange nuts (3/8 inch) (Figure 2 and Figure 3).

3

Installing the Z Stand Bracket

Parts needed for this procedure:

2	Carriage bolt (3/8 x 1-1/4 inches)
2	Flange nut (3/8 inch)
1	Bolt (1/4 x 3/4 inches)
1	Locknut (1/4 inch)
1	Bracket pin
1	Lanyard
1	Cradle bracket

Procedure

Note: Ensure the grass deflector is installed in the lower holes in the mower deck brackets.

1. Place the Z Stand cradle bracket onto the left front frame as shown in [Figure 4](#).
2. Install the Z Stand cradle bracket to the frame with the cradle bracket, 2 carriage bolts (3/8 x 1-1/4 inches) and 2 flange nuts (3/8 inch) ([Figure 4](#)).
Ensure the correct holes are used as shown in [Figure 4](#).
3. Install the lanyard to bracket pin. Use large loop on lanyard ([Figure 4](#)).
4. Install the lanyard with a bolt (1/4 x 3/4 inches) and locknut (1/4 inch) ([Figure 4](#)).

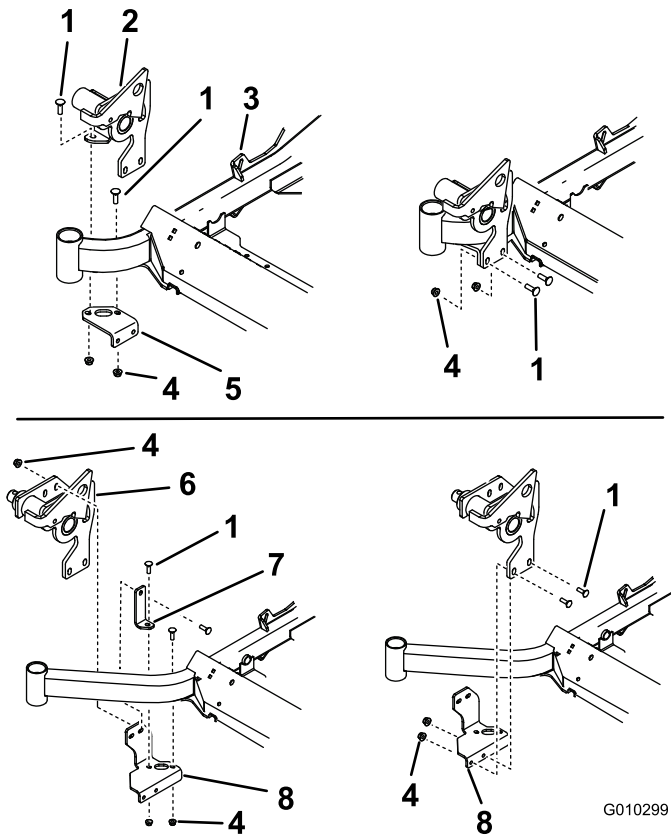


Figure 2

- | | |
|---|--|
| 1. Carriage bolt (3/8 x 1-1/4 inches) | 5. Bottom bracket (48,52 and 60 inch mowers) |
| 2. Z Stand hub (48,52 and 60 inch mowers) | 6. Z Stand hub (72 inch mowers) |
| 3. Right side of machine | 7. Angle bracket |
| 4. Flange nut (3/8 inch) | 8. Bottom bracket (72 inch mowers) |

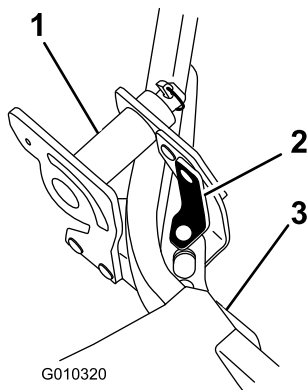


Figure 3

72 inch hub only

- | | |
|---|--------------------------|
| 1. Z Stand hub installed (72 inch mowers) | 3. Right side of machine |
| 2. Angle bracket (72 inch mowers) | |

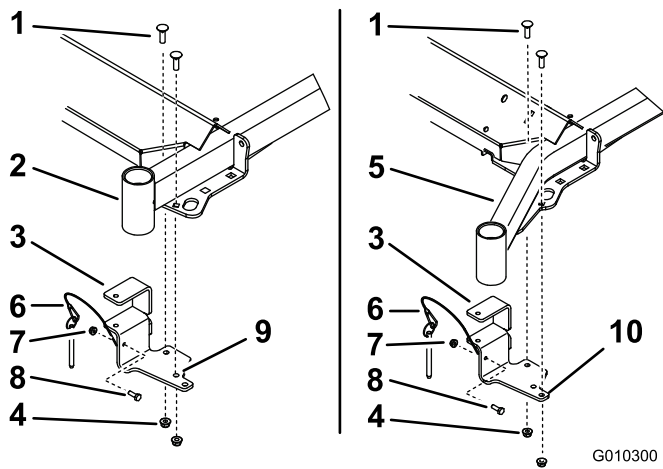


Figure 4

- | | |
|--|--|
| 1. Carriage bolts (3/8 x 1-1/4 inches) | 6. Lanyard |
| 2. Frame (48, 52 and 60 inch machines) | 7. Nut (1/4 inch) |
| 3. Cradle bracket | 8. Bolt (1/4 x 3/4 inches) |
| 4. Flange nut (3/8 inch) | 9. Correct hole for 48 and 52 inch mowers |
| 5. Frame (72 inch machines) | 10. Correct hole for 60 and 72 inch mowers |

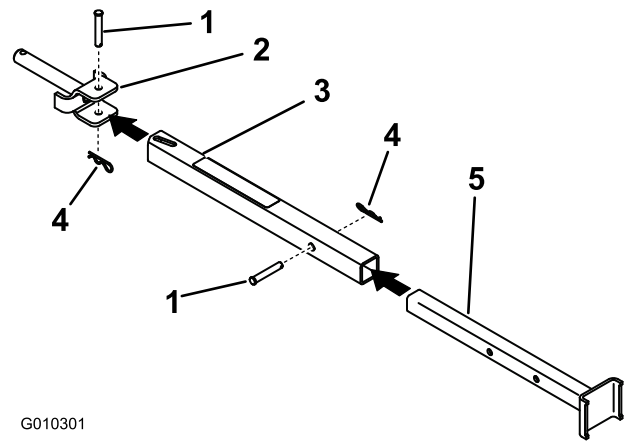


Figure 5

- | | |
|---------------|-----------------------|
| 1. Clevis pin | 4. Hairpin cotter pin |
| 2. Pivot pin | 5. Foot |
| 3. Outer tube | |

- Place a thrust washer onto the pivot pin (Figure 6).
- Insert the pivot pin into the Z Stand hub.

Note: When inserting the pivot pin, make sure the position of slot in tube is as shown in and make sure the chamfer is facing forward (Figure 6).

- Place a thrust washer onto the pivot pin and secure it with a lynch pin (Figure 6).

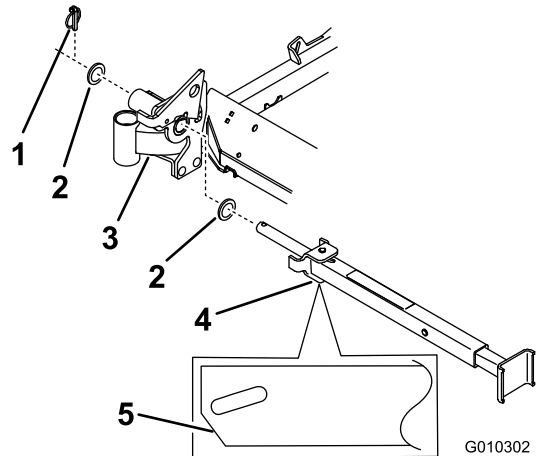


Figure 6

- | | |
|------------------|---|
| 1. Lynch pin | 4. Z Stand assembly |
| 2. Thrust washer | 5. Topview of outer tube and chamfer facing forward |
| 3. Hub assembly | |

4

Installing the Z Stand

Parts needed for this procedure:

1	Pivot pin
1	Outer tube
1	Foot
2	Clevis pin
2	Hairpin cotter pin
2	Thrust washer
1	Lynch pin

Procedure

- Install the pivot pin to the outer tube with a clevis pin and hairpin cotter pin (Figure 5).
- Place the foot part of stand into the outer tube. Align holes and secure with a clevis pin and hair pin cotter (Figure 5).

5

Installing the Foot Pedal (Machines with 48, 52 and 60 inch Mower Decks)

Parts needed for this procedure:

1	Foot pedal
---	------------

Procedure

1. Remove the existing foot pedal from the machine. Save the existing hardware.
2. Install the new foot pedal onto the machine using the existing hardware ().

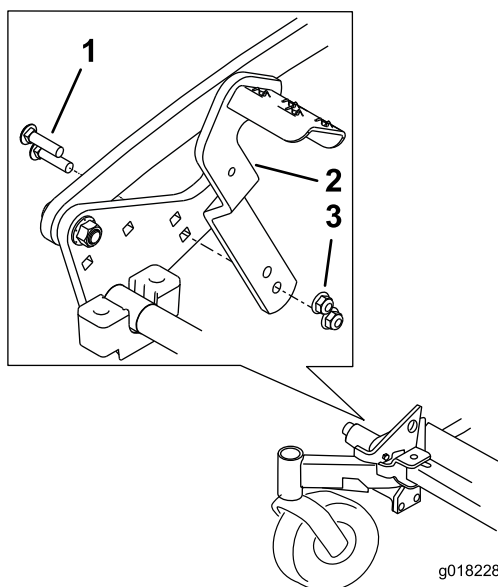


Figure 7

1. Existing bolts
2. New foot pedal
3. Existing nuts

Operation

Using the Z Stand®

The Z Stand® raises the front end of the machine to allow you to clean the mower and remove the blades.

⚠ WARNING

The machine could fall onto someone and cause serious injury or death.

- Use extreme caution when operating the machine on the Z Stand®.
- Use only for cleaning the mower and removing the blades.
- Do not keep the machine on the Z Stand for extended periods of time.
- Always turn the engine off, set the parking brake, and remove the key before performing any maintenance to the mower.

Driving up onto the Z Stand

Important: Use the Z Stand on a level surface.

1. Raise the mower to the transport position.
2. Remove the bracket pin (Figure 8).

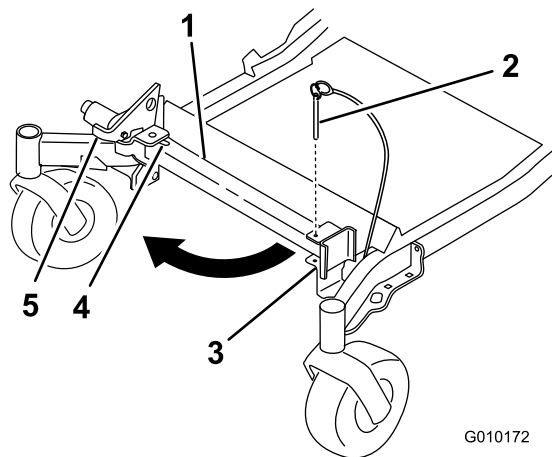


Figure 8

1. Z Stand
2. Bracket Pin
3. Bracket
4. Bottom of slot
5. Latch

3. Raise the latch. Swing the stand foot out front and slide stand toward machine, into the bottom of slot (Figure 8 and Figure 9).
4. Lengthen the Z Stand by removing the clevis pin and hairpin cotter pin from the outer tube and sliding the foot out.

- Align the holes and install the clevis pin and hairpin cotter pin.

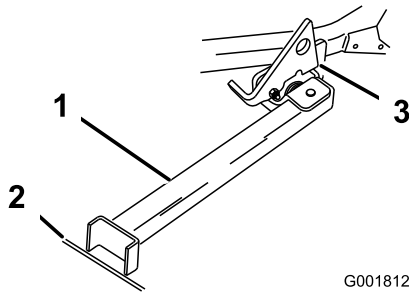


Figure 9

- | | |
|-------------------------------|-------------------------------|
| 1. Z Stand (Positioned in | 3. Latch resting on pivot tab |
| 2. Crack in side walk or turf | |

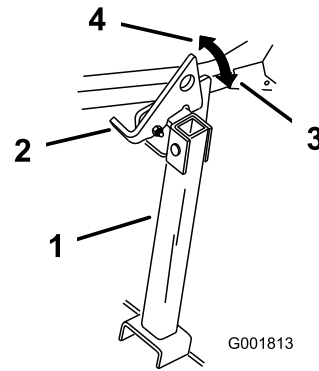


Figure 10

- | | |
|------------|----------------------|
| 1. Z Stand | 3. Locked position |
| 2. Latch | 4. Unlocked position |

- Set the foot of stand on the ground and rest the latch on the pivot tab (Figure 9).
 - Start the engine and put it at half throttle.
- Note:** For best results, place the foot of stand into seams in sidewalks or into the turf (Figure 9).
- Drive onto the stand. Stop when the latch drops over the tab into the locked position (Figure 9). Once onto the stand, engage the parking brake and turn off the engine.
 - Chock or block the drive wheels.

⚠ WARNING

Parking brake may not hold machine parked on Z Stand and could cause personal injury or property damage.

Do not park on Z Stand unless wheels are chocked or blocked.

- Perform the maintenance.

Driving off the Z Stand

- Remove the chocks or blocks.
- Raise the latch to the unlocked position (Figure 10).

- Start the engine and place it at half throttle. Disengage the parking brake.
- Slowly drive backwards off of the stand.
- Shorten the Z Stand by removing the clevis pin and hairpin cotter pin from the outer tube and sliding the foot in.
- Align the holes and install the clevis pin and hairpin cotter pin.
- Return the stand to its rest position (Figure 8).



Count on it.