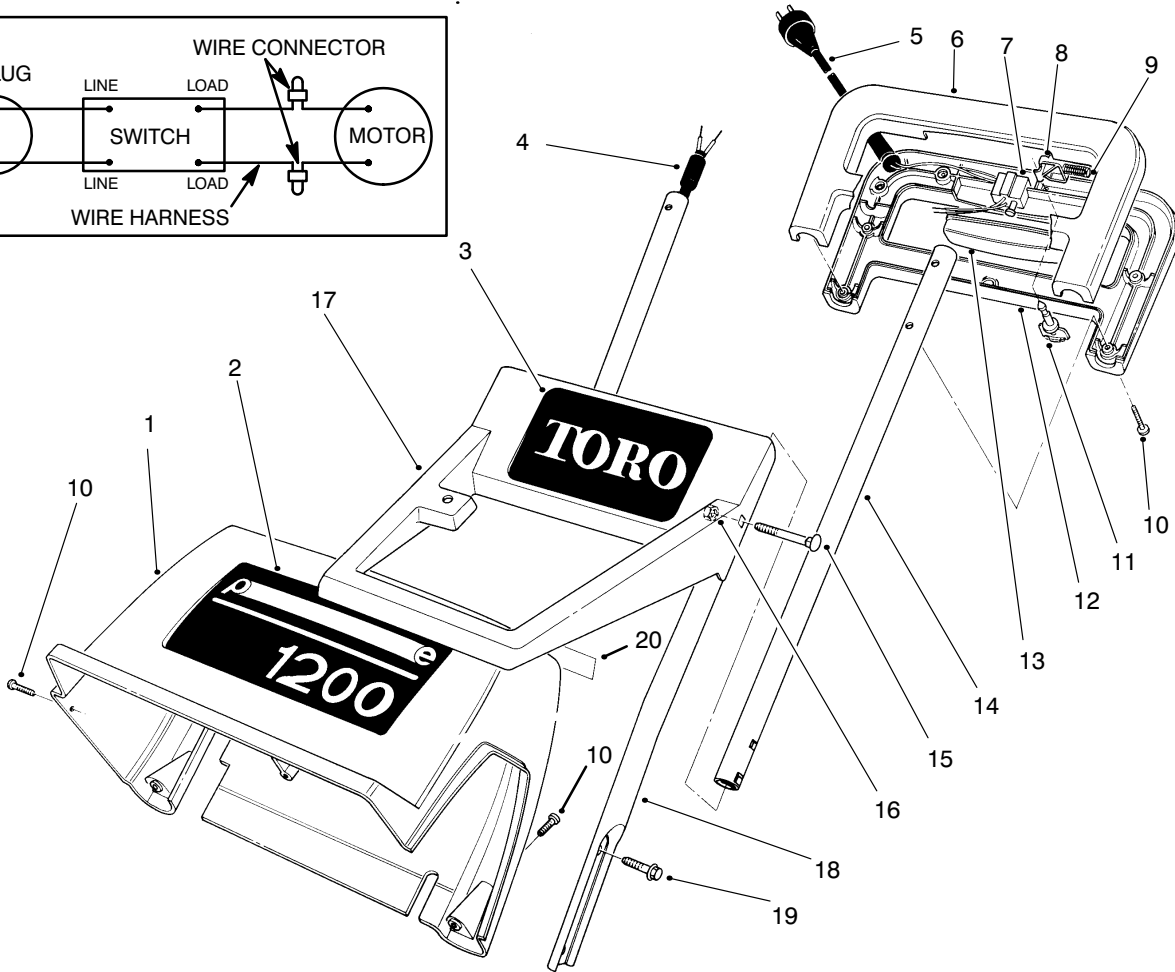
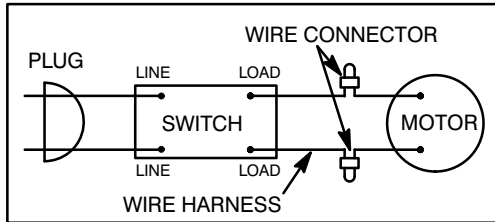




MODEL NO. 38005-790001 & UP

PARTS CATALOG

1200 POWER CURVE SNOWTHROWER



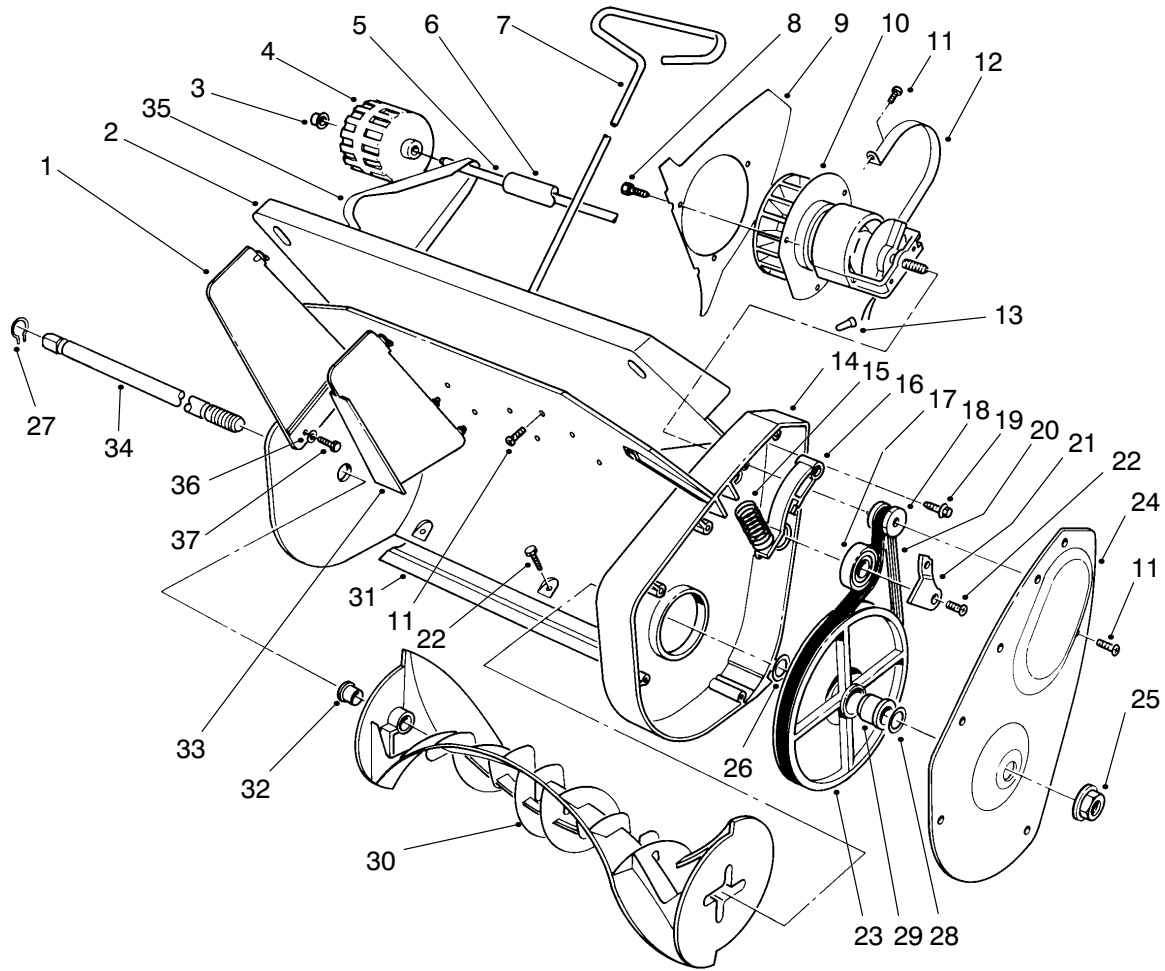
C-0478A

HANDLE ASSEMBLY

Ref. No.	Part No.	Description	No. Used
1	17-1809	Shroud (Incl. Ref. # 2 & 20)	1
2	98-1821	Decal - 1200	1
3	64-9020	Decal - Toro	1
4	73-1600	Wire Harness	1
5	42-0775	Cord Supply	1
6	73-1690	Handle - Upper Control	1
7	36-8340	Switch - Starter	1
8	37-8000	Switch - Lockout	1
9	37-7990	Spring - Compression	1
10	94-4496	Screw - Self Tap. Pan Hd.	11
11	38-8310	Key	1
12	73-1700	Handle - Lower Control	1

Ref. No.	Part No.	Description	No. Used
13	37-8010	Bar - Switch	1
14	56-6520	Tube - Upper	2
15	73-5660	Bolt - Carriage	2
16	3296-42	Nut - Lock	2
17	64-9040	Handle - Middle	1
18	56-6540	Handle - Lower L.H.	1
*	64-8570	Handle - Lower R.H.	1
19	49-2040	Screw	6
20		Decal - U.L.	1
*		Loose Parts Assembly (Incl. Ref. #11, 15, & 16)	1
*	64-8910	Insulator - Power Cord	1

* Not Illustrated



c-0477

HOUSING & ROTOR ASSEMBLY

Ref. No.	Part No.	Description	No. Used
1	64-9070	Vane - Outer	2
2	94-5826	Mount - Vane	1
3	32112-1	Nut - Push On	2
4	73-5720	Wheel	2
5	37-6461	Shaft - Axle	1
6	73-0252	Sleeve - Axle	1
7	61-8771	Rod - Vane Adjustment	1
8	32144-30	Screw - Self Tapping	3
9	61-8720	Baffle - Air	1
10	61-4210	Motor	1
11	94-4496	Screw - Self Tap. Pan Hd.	10
12	61-8870	Mount - Motor	1
13	218-511	Connector - Wire	2
14	64-9100	Housing	1
15	61-8880	Spring - Compression Idler	1
16	73-5740	Arm - Idler	1
17	61-8780	Bearing - Ball	1
18	61-8841	Pulley - Drive	1
19	32144-87	Screw - Hex. Washer Hd.	2

Ref. No.	Part No.	Description	No. Used
20	61-8800	Belt - Drive	1
21	73-5750	Retainer - Idler Pulley	1
22	32144-111	Screw - Self Tap. Pan Hd.	5
23	73-4990	Pulley - Driven	1
24	73-4980	Cover - Belt Case	1
25	32128-25	Nut - Flange Lock	1
26	37-8080	Washer - Thrust	1
27	32151-61	Ring - Retaining	1
28	39-5190	Washer - Thrust	2
29	73-3250	Bushing - Rotor	1
30	64-9030	Rotor	1
31	73-1650	Scraper	1
32	64-9120	Bushing - Rotor	1
33	64-9080	Vane - Center	3
34	73-4960	Shaft - Rotor	1
35	64-8871	Bracket - Wheel R.H.	1
*	64-8881	Bracket - Wheel L.H.	1
36	3256-75	Washer	5
37	94-6961	Screw - Self Tapping	3

* Not Illustrated

TORO PART NUMBER INDEX

3319-652

Part No.	Description	Pg. No.	Ref. No.	Qty.	Part No.	Description	Pg. No.	Ref. No.	Qty.
17-1809	Shroud	1	1	1	64-9100	Housing	2	14	1
36-8340	Switch - Starter	1	7	1	64-9120	Bushing - Rotor	2	32	1
37-6461	Shaft - Axle	2	5	1	73-0252	Sleeve - Axle	2	6	1
37-7990	Spring - Compression	1	9	1	73-1600	Wire Harness	1	4	1
37-8000	Switch - Lockout	1	8	1	73-1650	Scraper	2	31	1
37-8010	Bar - Switch	1	13	1	73-1690	Handle - Upper Control	1	6	1
37-8080	Washer - Thrust	2	26	1	73-1700	Handle - Lower Control	1	12	1
38-8310	Key	1	11	1	73-3250	Bushing - Rotor	2	29	1
39-5190	Washer - Thrust	2	28	2	73-4960	Shaft - Rotor	2	34	1
42-0775	Cord Supply	1	5	1	73-4980	Cover - Belt Case	2	24	1
49-2040	Screw	1	19	6	73-4990	Pulley - Driven	2	23	1
56-6520	Tube - Upper	1	14	2	73-5660	Bolt - Carriage	1	15	2
56-6540	Handle - Lower L.H.	1	18	1	73-5720	Wheel	2	4	2
61-4210	Motor	2	10	1	73-5740	Arm - Idler	2	16	1
61-8720	Baffle - Air	2	9	1	73-5750	Retainer - Idler Pulley	2	21	1
61-8771	Rod - Vane Adjustment	2	7	1	94-4496	Screw - Self Tap. Pan Hd.	1	10	11
61-8780	Bearing - Ball	2	17	1	94-4496	Screw - Self Tap. Pan Hd.	2	11	10
61-8800	Belt - Drive	2	20	1	94-5826	Mount - Vane	2	2	1
61-8841	Pulley - Drive	2	18	1	94-6961	Screw - Self Tapping	2	37	3
61-8870	Mount - Motor	2	12	1	98-1821	Decal - 1200	1	2	1
61-8880	Spring - Compression Idler	2	15	1	218-511	Connector - Wire	2	13	2
64-8570	Handle - Lower R.H.	1	*	1	3256-75	Washer	2	36	5
64-8871	Bracket - Wheel R.H.	2	35	1	3296-42	Nut - Lock	1	16	2
64-8881	Bracket - Wheel L.H.	2	*	1	32112-1	Nut - Push On	2	3	2
64-8910	Insulator - Power Cord	1	*	1	32128-25	Nut - Flange Lock	2	25	1
64-9020	Decal - Toro	1	3	1	32144-30	Screw - Self Tapping	2	8	3
64-9030	Rotor	2	30	1	32144-87	Screw - Hex. Washer Hd.	2	19	2
64-9040	Handle - Middle	1	17	1	32144-111	Screw - Self Tap. Pan Hd.	2	22	5
64-9070	Vane - Outer	2	1	2	32151-61	Ring - Retaining	2	27	1
64-9080	Vane - Center	2	33	3					

*Not Illustrated

